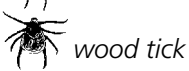


Enjoy the River Safely

- Wear your life jacket. Make sure your child wears a life jacket!
- Use alcohol responsibly. Many river accidents involve alcohol.
- Wear sunscreen, sunglasses, and a hat to prevent sunburn. Water reflects the rays of the sun giving you a double dose of ultraviolet light.
- Avoid trees that have fallen in the river. They can catch and overturn your vessel.
- Don't jump from cliffs, bridges, or trees.
- Protect your feet with river shoes, water sandals, or old shoes. Fish hooks, glass, and rocks can injure your feet.
- Bring your own drinking water. Treat river water before drinking to avoid giardiasis, a serious stomach irritant.
- Blastomycosis is a fungal infection that is commonly contracted by dogs and sometimes by humans. Avoid digging in moist soils.
- Check for ticks often and know the symptoms of Lyme disease. Deer ticks are common along the Riverway and some carry the bacteria that cause the disease.
- Know how to identify poison ivy and avoid contact.



deer tick



wood tick

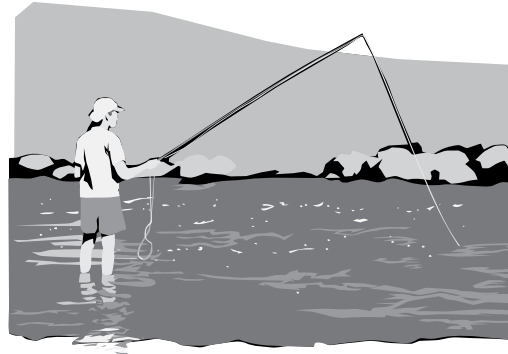


poison ivy

National Park Service St. Croix National Scenic Riverway



Namekagon River Map 1: Namekagon Dam to Hayward Landing



"If people concentrated on the really important things in life, there'd be a shortage of fishing poles." Doug Larson

From its cool upper stretches to its warmer lower sections, the Namekagon River is a paradise for anglers. The dazzling brook trout, the esteemed smallmouth bass, the elusive musky, and countless other prized game fish attract people from all over the world. Anglers have been drawn to the Namekagon River for centuries. Initially fishing for sustenance, American Indians and early settlers relied on the waters for food. Now a recreational paradise, the Namekagon River is a top notch fishing destination.

Discover clean water, lush landscapes, and quiet solitude along the St. Croix National Scenic Riverway, a national park that with your help protects 255 miles of wild and scenic river corridor.



Top Riverway Regulations

- Approved life jackets for each person are required on your vessel. Children under 13 are required to wear a life jacket.
- Please do not bring glass containers to the Riverway. Broken glass cuts bare feet.
- Disposing human waste into the river is prohibited.
- Jumping from cliffs, bridges, or trees is illegal and dangerous.
- Open campfires are allowed only in metal fire rings. Campfires must be out and cold before you leave the area.
- The cutting of live vegetation is strictly prohibited. Dead and down wood may be collected for campfires from shoreline areas, but not from islands.
- Possession of firewood that originates more than 10 miles from the Riverway is prohibited.
- Individual campsites accommodate a maximum of 8 people and 3 tents. Group sites accommodate a maximum of 16 people and 6 tents.
- Littering is not allowed. Carry out all trash.
- It is illegal to shoot or possess fireworks on lands and waters within the Riverway.
- Collecting freshwater mussels, mussel shells, wildflowers, and historical artifacts is prohibited.
- Quiet hours are 10:00 pm to 6:00 am.

St. Croix National Scenic Riverway

Namekagon River Map 1: Namekagon Dam to Hayward Landing



Namekagon River Visitor Center

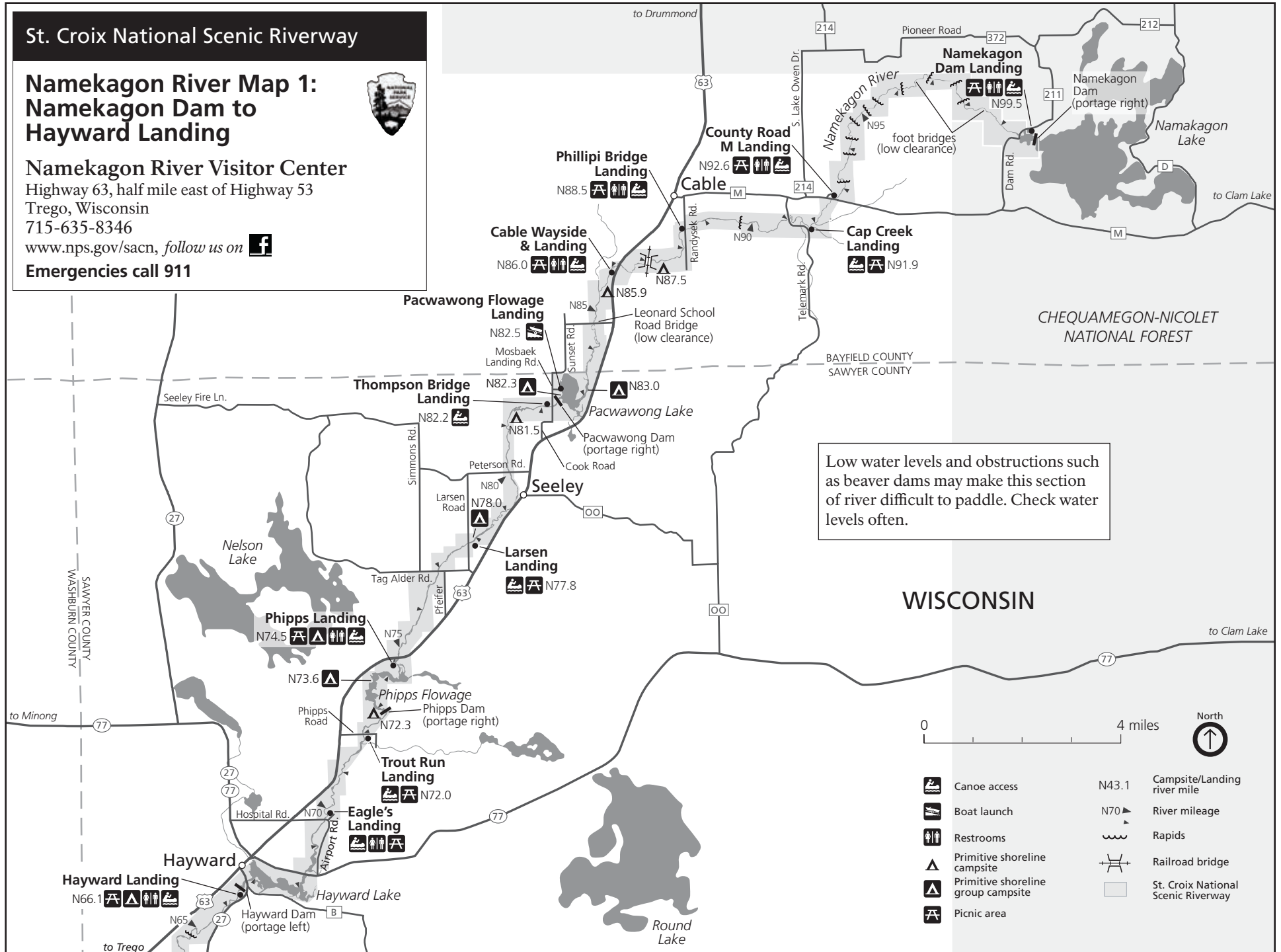
Highway 63, half mile east of Highway 53

Trego, Wisconsin

715-635-8346

www.nps.gov/sacn, follow us on

Emergencies call 911



Low water levels and obstructions such as beaver dams may make this section of river difficult to paddle. Check water levels often.

WISCONSIN



- | | | | |
|--|------------------------------------|-------|------------------------------------|
| | Canoe access | N43.1 | Campsite/Landing river mile |
| | Boat launch | N70 | River mileage |
| | Restrooms | | Rapids |
| | Primitive shoreline campsite | | Railroad bridge |
| | Primitive shoreline group campsite | | St. Croix National Scenic Riverway |
| | Picnic area | | |