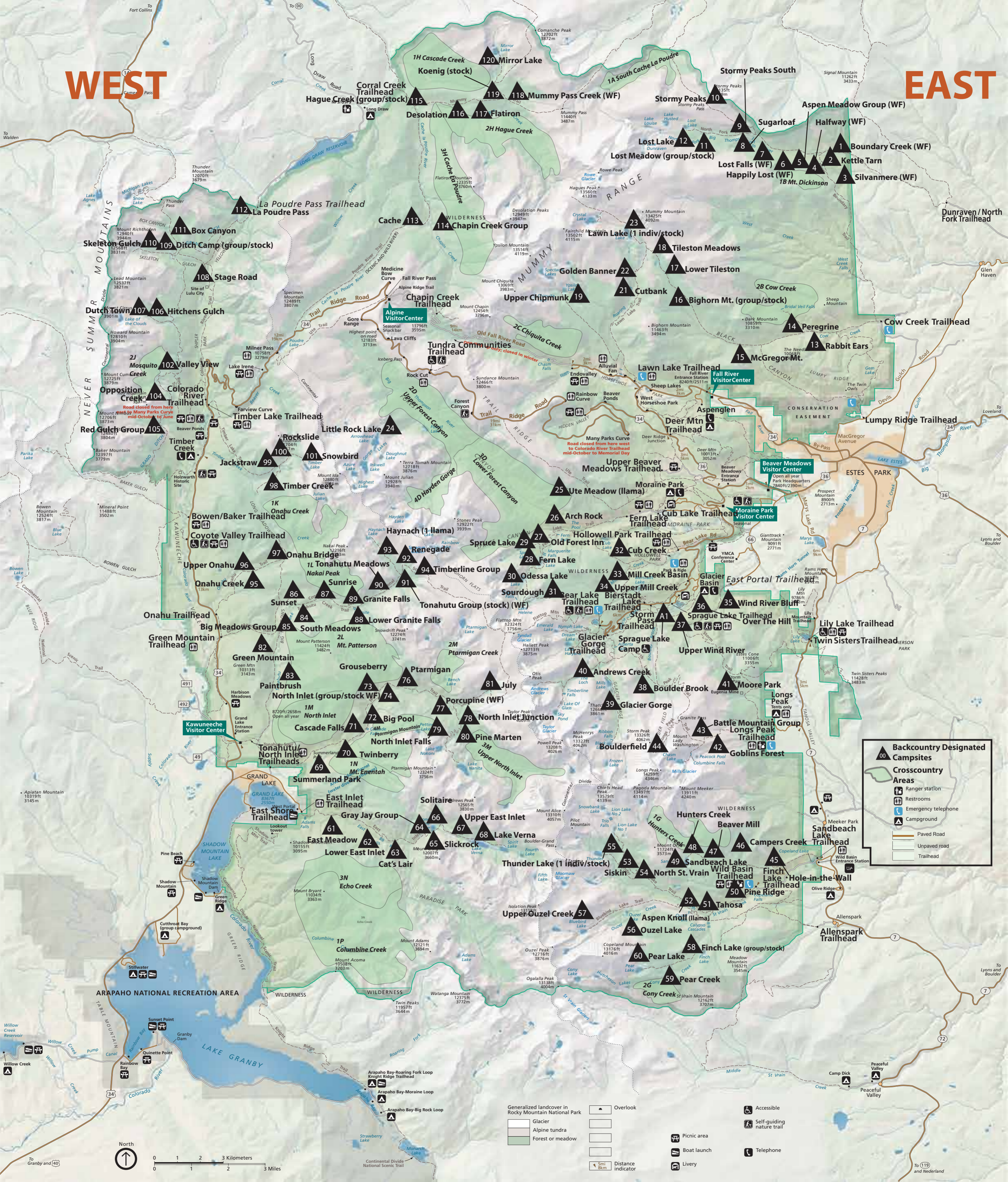


WEST

EAST



Backcountry Designated Campsites

Crosscountry Areas

- Ranger station
- Restrooms
- Emergency telephone
- Campground
- Paved Road
- Unpaved road
- Trailhead

Generalized landcover in Rocky Mountain National Park

- Glacier
- Alpine tundra
- Forest or meadow

Overlook

Accessible

Self-guiding nature trail

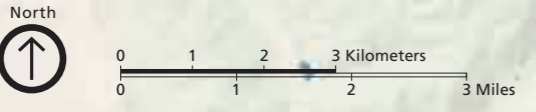
Picnic area

Boat launch

Livery

Telephone

Distance indicator



To Walden

To Fort Collins

To Loveland

To Lyons and Boulder

To Lyons and Boulder

To Nederland