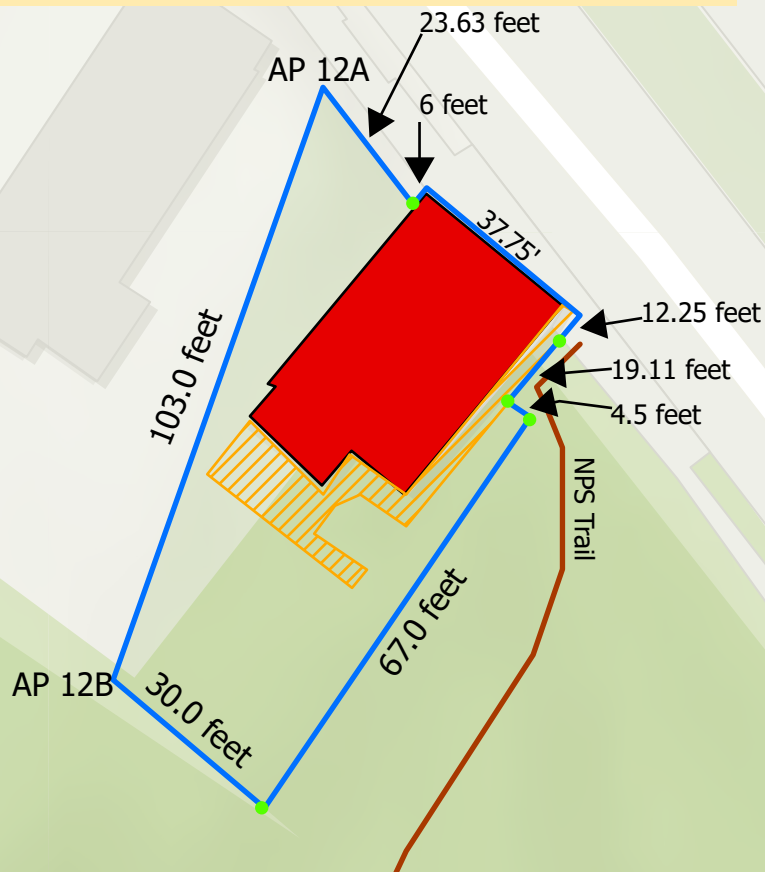


Exhibit A: Premises

Starting on the northwest (NW) corner of the property line at Angle Point (AP) 12A, travel 103 feet along the fence line to southwest (SW) corner to AP 12B. From this AP turn to the southeast (SE) 30 feet to the next corner. From this corner turn to the northeast (NE) and travel a distance of 67 feet. From this point turn to the NW and travel four and half feet to the asphalt walkway. From this point turn to the NE and travel 19.11 feet to the carsonite. Continue another 12.25' into the side walk and turn to the NW: N38°5'W for 37.75'. Make a 90 degree turn to the west for 6' until you reach the brown carsonite. Once there turn towards AP 12A for 26.63'.



1. The red solid area is the Conduit School
2. The orange hatched area is the walkway and deck for the School
3. The Solid Blue line is the Land Assignment Area for the School, please note that the trail is about 5-6 feet from the building, making the area appear smaller.
4. The green dots are the locations of the carsonites for the boundary of the lease. Each AP also has a carsonite post.

0 25 50 100 Feet

