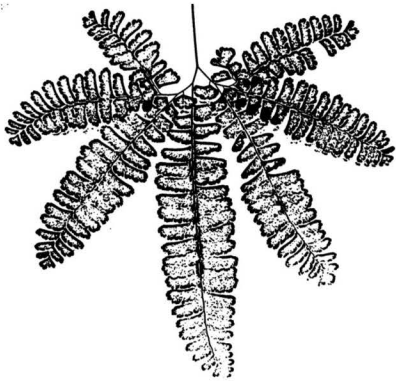




## Common Native Ferns and Allies



**Five-finger Fern**  
*Adiantum aleuticum*

Fan-shaped, delicate fern with long black stems, found in moist shady areas such as Fern Canyon.



**Lady Fern**

*Athyrium filix-femina* var. *cyclosorum*

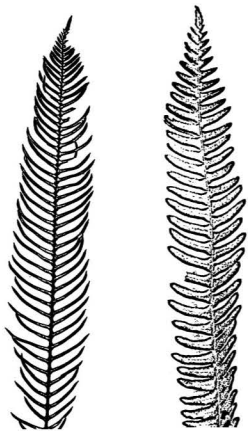
Very common fern in moist redwood forests. Often found near creeks. Delicate fronds taper at base to form a diamond outline.



**Wood Fern**

*Dryopteris arguta*

Often found growing from stumps, or woody debris. Forms triangle at base unlike Lady Fern.



**Deer Fern**  
*Blechnum spicant*

Long, narrow, erect fern tapers at tip and base. Slender fronds at left are fertile, sterile at right.



**Bracken Fern**

*Pteridium aquilinum* var. *pubescens*

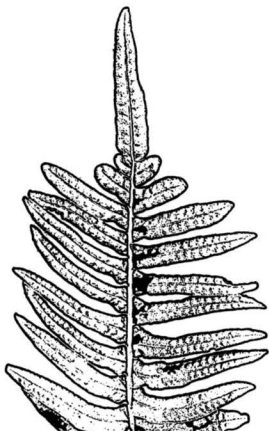
Grows in large colonies in meadows. Triangular in outline. Most widely spread fern in world.



**Sword Fern**

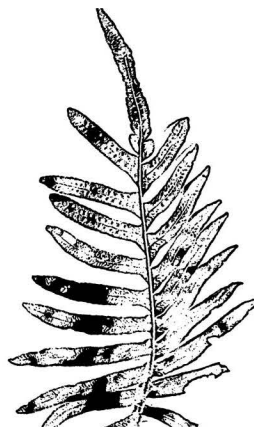
*Polystichum munitum*

Dark green, tall, dry fern with pinnae that taper toward base to resemble hilt of sword.



**Leather Fern**  
*Polypodium scolieri*

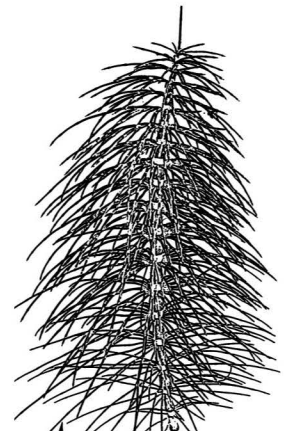
Often grows as epiphyte on tree bark or in canopies. Fronds have thick, leathery texture.



**Licorice Fern**

*Polypodium glycyrrhiza*

Often grows on big-leaf maples within park. Chewed rhizome has licorice taste.



**Common Horsetail**  
*Equisetum arvense*

Like ferns, Horsetails reproduce via spores. Leaves grow in whorls from joints. One of earth's oldest plants.