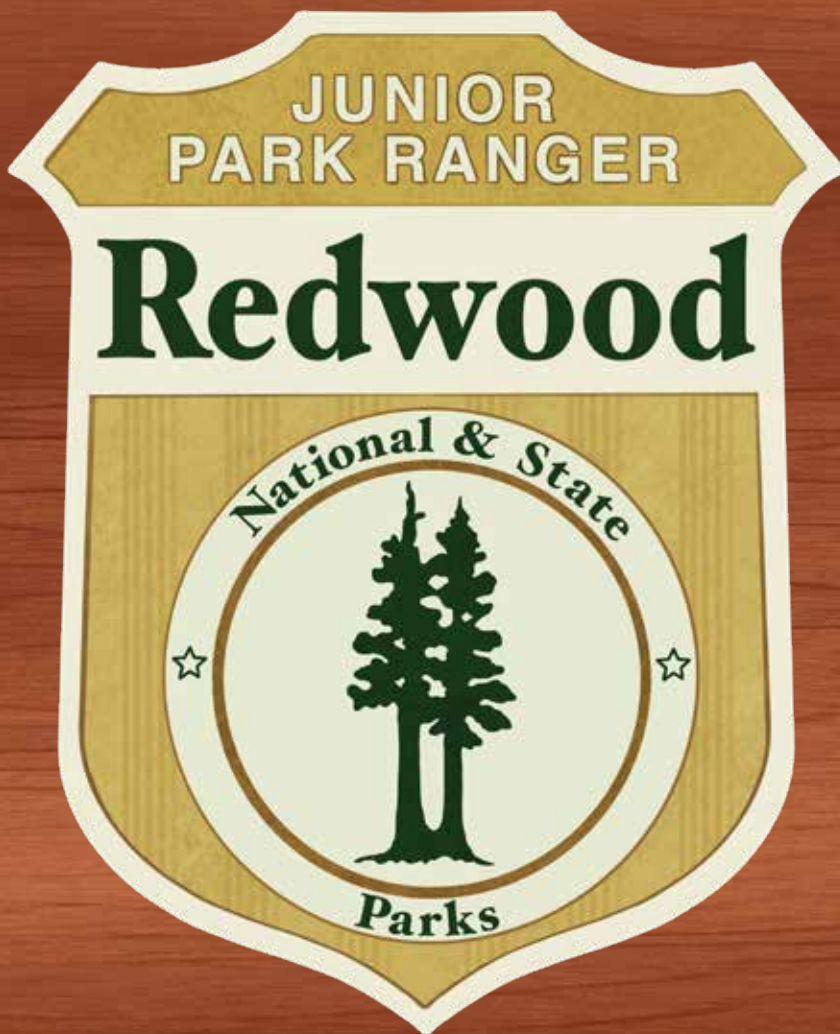



• **Name** •



Activity Booklet
Ages 4 and Up

Instructions for Becoming a Junior Ranger

To become a Junior Ranger you must earn badge points. Look below to see how many badge points you will need. Keep track of your badge points in the space below by putting a line through the badge, like this .

A question or activity can be worth:



(1 badge point)



(2 badge points)



(3 badge points)

Ages 4-9 (Grades K-3rd) must earn 8 badge points or more



Ages 10-12 (Grades 4th- 6th) must earn 16 badge points or more



Ages 13 and over must earn 24 badge points or more



A Search for Junior Ranger Safety

Welcome to Redwood National and State Parks. There is so much to see and do here! We know that you are excited to get started, but to be a Junior Ranger you must always be safe!

Earn badge points by filling in the missing letters in the **Highlighted** words below and then find those words in the **Word Search**.

Junior Ranger Safety Tips



Before going to the beach, know when **H _ GH** and **L _ _** tides are.

At the beach, never turn your back to the **W _ V _ S**; they can sneak up on you!

Always carry **W _ T _ _** to drink and a rain **C O _ _** to keep you dry.

Stay at least 500 feet away when viewing **W _ LD _ _ FE**.

Always **H _ K _** with an adult and stay on the **TR _ _ L**.

Help keep wildlife wild! Never **F _ _ D** wild **AN _ M _ LS**.

Word Search



L	R	F	T	R	A	I	L	A	U
W	O	G	R	I	C	K	F	N	H
A	J	W	D	Y	O	R	E	I	I
V	E	A	Q	S	A	F	E	M	G
E	W	T	S	L	T	P	D	A	H
S	L	E	A	V	E	S	V	L	K
N	P	R	H	I	K	E	H	S	K
W	I	L	D	L	I	F	E	M	X



Poison Oak



Look out for this plant! It can cause an itchy rash if you touch it. Here is a little rhyme to keep you safe:

If you find a plant with **LEA _ _ S** of 3, stay **S _ FE** and let it be....it's trying to tell you, "don't touch me!"



The Redwood Puzzle



Coast redwoods are amazing trees but we have more than just tall trees in these parks. A habitat is a special home for a plant or animal. An old-growth forest is just one kind of habitat within these parks. Like pieces of a puzzle, when you put them all together, you get **Redwood National and State Parks!**

Earn 2 badge points by drawing a line from the habitat to the correct puzzle piece.

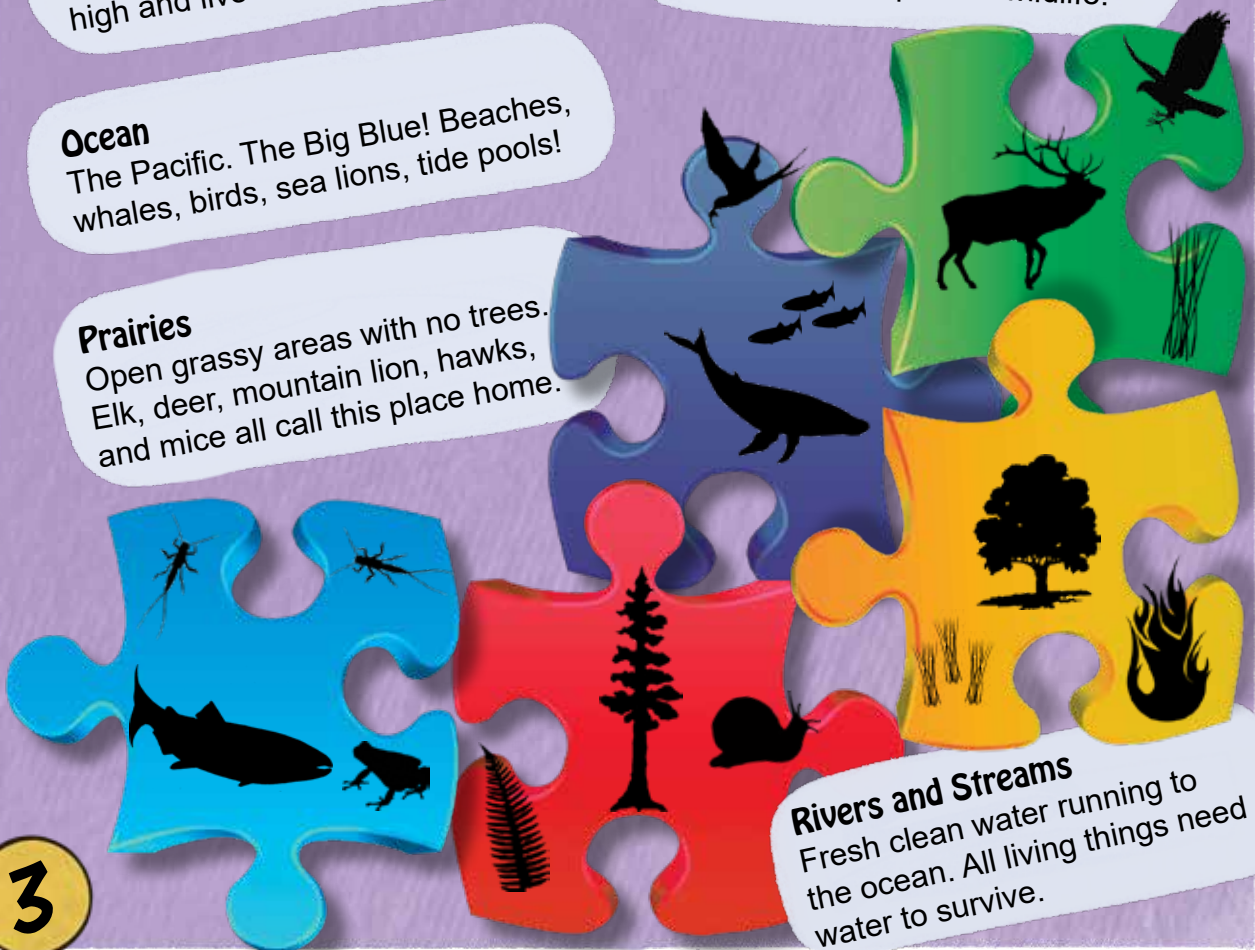
Old-growth Coast Redwood Forest
Trees that can grow over 350 feet high and live over 2,000 years!

Ocean
The Pacific. The Big Blue! Beaches, whales, birds, sea lions, tide pools!

Prairies
Open grassy areas with no trees. Elk, deer, mountain lion, hawks, and mice all call this place home.

Oak Woodlands

Mountain prairies. Open grass lands with oak trees. Fire keeps the meadows open for wildlife.



Rivers and Streams
Fresh clean water running to the ocean. All living things need water to survive.

Be a Wildlife Detective



As you explore the habitats of Redwood National and State Parks, you will discover some amazing things! You might not always see the wildlife you wanted to see...but you can find clues that wildlife has left behind.

Find 5 wildlife clues in the parks and earn 3 badge points.

Remember: Junior Rangers always leave things where they find them (except for litter..we pick that up!)

<input type="checkbox"/> Bird Nest 	<input type="checkbox"/> Insect Buzzing 	<input type="checkbox"/> Tracks 	<input type="checkbox"/> Bird Sound 
<input type="checkbox"/> Spiderweb 	<input type="checkbox"/> Hole in tree 	<input type="checkbox"/> Feather 	<input type="checkbox"/> Whale Spout 
<input type="checkbox"/> Sea Lion Bark 	<input type="checkbox"/> Scat (Poop) 	<input type="checkbox"/> Slime Trail 	<input type="checkbox"/> Crab Molt (shed) 
<input type="checkbox"/> Empty Shell 	<input type="checkbox"/> _____ Other Clues?	<input type="checkbox"/> _____ Other Clues?	<input type="checkbox"/> _____ Other Clues?



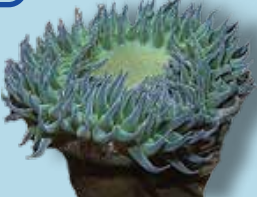
Tide Pool Bingo



Have you ever seen the rocky ocean floor when the tide goes out? We call this habitat a tide pool. Take a walk on the beach and discover the amazing tide pools of Redwood National and State Parks! **Safety first! Before you go, earn your safety badge points on page 2.**

Earn 3 badge points by identifying at least 4 things that live in the tide pool habitat.

- Remember:**
1. Always explore the beach with an adult.
 2. Never turn your back to the ocean.
 3. Watch out for big waves.
 4. Know the times of high and low tides.

<input type="checkbox"/> Rock Crab 	<input type="checkbox"/> Barnacle 	<input type="checkbox"/> Limpet 
<input type="checkbox"/> Green Anemone 	<input type="checkbox"/> Kelp 	<input type="checkbox"/> Sea Slug 
<input type="checkbox"/> Sea Star 	<input type="checkbox"/> Hermit Crab 	<input type="checkbox"/> Mussel 

Ranger Beach Report



Earn 3 badge points by filling out the Redwood National and State Parks beach report. Take a walk on the beach and look, listen, and feel for the current conditions. Return to a visitor center and compare your observations to the daily weather information.

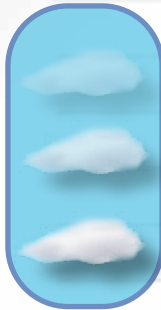
Redwood National and State Parks Beach Report

Date: _____

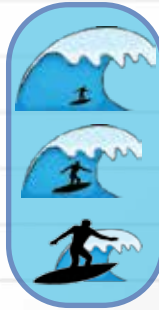
Location: _____

Time: _____

Fog



Waves



Weather



Temperature



Special Observations:

Blank area for special observations.

Be a Tree Detective

Coast redwood trees can live to be over 2,000 years old! How do we know this? Scientists once counted over 2,000 growth rings on a single tree. The light rings are the seasons when the tree grew fast and dark rings are the seasons when the tree grew slow. **Take a hike in the old-growth and look for clues to help you with this activity.**

Ranger Tip

1 light growth ring
+
1 dark growth ring
=
1 tree year



How old is this tree?
About _____ years old.



What do you think caused the black marks on the tree?



About how old was the tree when the black marks happened?

and _____

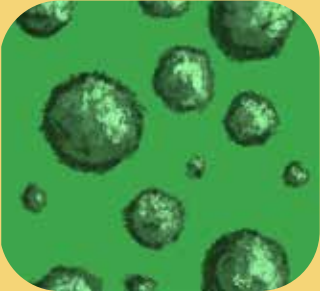
Future Forests



Did you know only a third of the forests here are healthy old-growth redwood forests? Park rangers are learning how to restore forests damaged by logging. Our efforts in the park today will create healthier forests for future generations to enjoy.

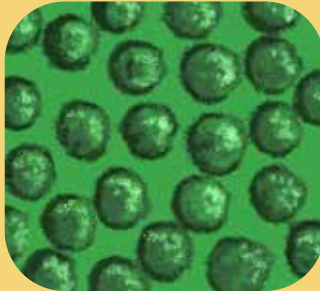
Below are examples of three different forest conditions you can find in the parks. Draw a line from the tree ring samples to the forest type they grew in. Hint: Tree ring spacing can reveal how much sun the tree has received.

Old-Growth



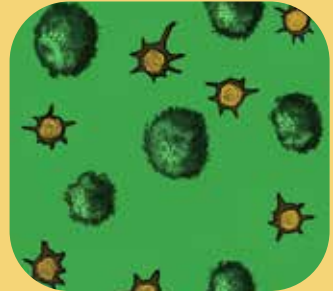
- Forest has never been harvested.
- Fewer trees spaced out allows sunlight to reach the forest floor.
- Has tallest, biggest, and oldest trees.

Second-Growth



- Forest was harvested and seeds were planted.
- Trees are closer together so less sunlight reaches the ground.
- Young trees grow slower as they fight for light.

Restored



- Many young and crowded trees were removed.
- Remaining young trees have space and light to grow tall and wide.
- On the way to again look like old-growth.



Earn 1 badge point by telling a ranger which forest conditions you saw. Where were you when you saw old-growth forest? Did you see any second-growth?

The Nursery Log



Shhhh...our forest babies are growing! A nursery log is a tree that has fallen over and is now a new home for baby plants. A nursery log, like a nursery for human babies, has all the nutrients to help baby plants grow.

Find a nursery log in the old-growth redwood forest and draw all the things you find growing on it. Use the photos below to help identify what you find.



Fern



Moss



Huckleberry



Redwood
Sorrel

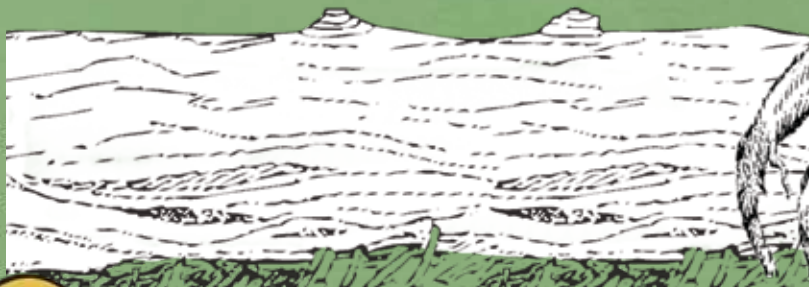
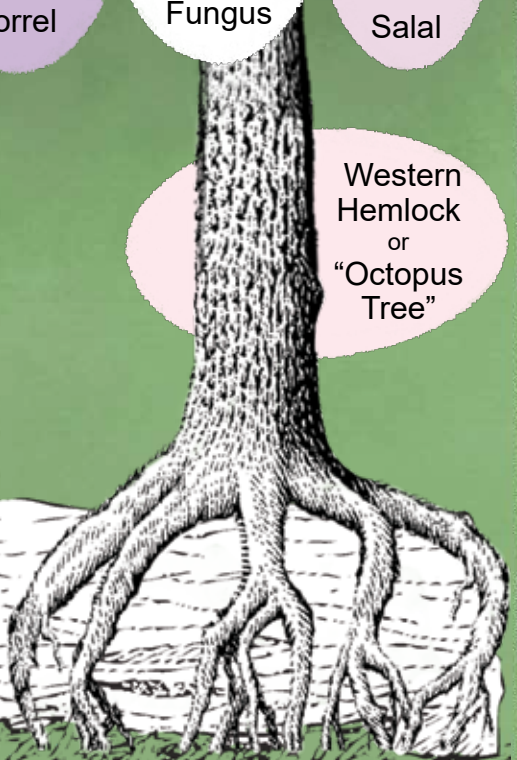


Fungus



Salal

Western
Hemlock
or
"Octopus
Tree"



The Octopus Tree Mystery



Now that you learned about nursery logs (on page 9), you have the knowledge to solve a mystery. An octopus tree stands on its roots...and its roots look kind of like an octopus! Most trees keep their roots hidden underground but something made this octopus tree (a Western Hemlock) grow this way.

Earn 2 badge points and get your name in the paper by solving the Octopus Tree Mystery. Explain why the Octopus Tree grows like it does.

Junior Ranger Solves Octopus Tree Mystery!

The Octopus Tree mystery has been solved! Here is how it works: _____



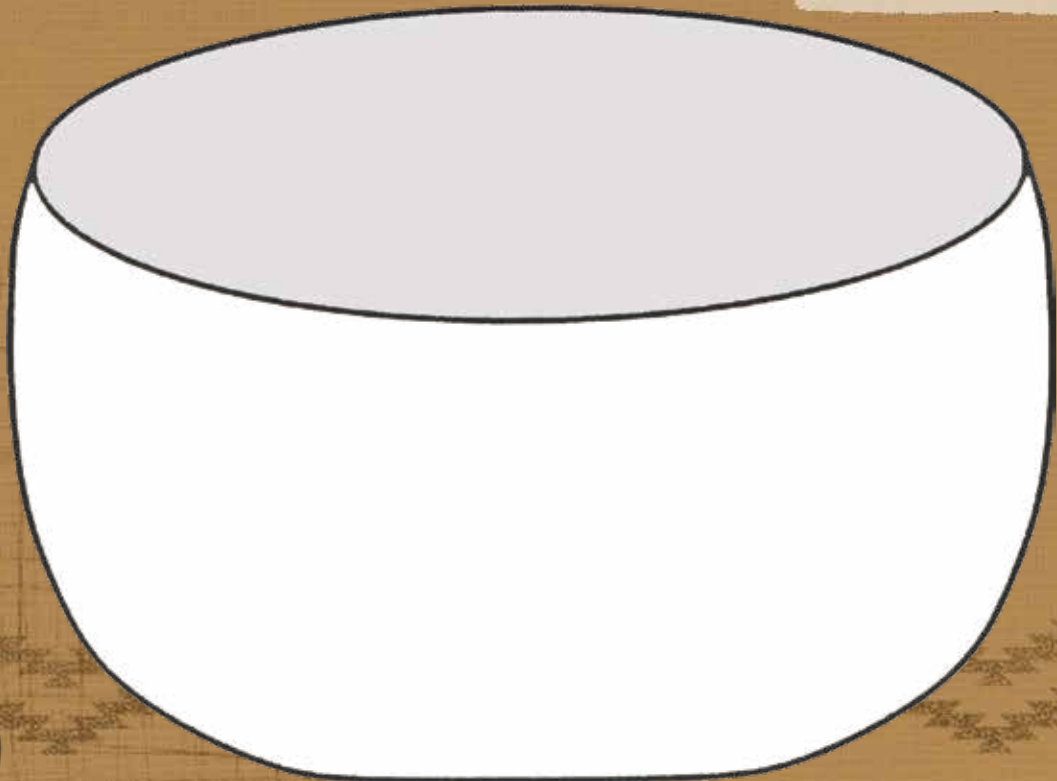
The Art of Making Things

Long before the rest of the world knew about redwood trees, American Indians like the **Yurok** and **Tolowa** were living, working, and playing underneath these giant trees, and still live here today. During your visit, look for the art, history, and culture of American Indian people.

Making things by hand takes time. It can take as much as two years for a person to collect, clean, and organize all the different plants to weave a single basket. A lot of care and thought is put into making traditional arts, tools, and homes.

Basket Design

Design and color your own basket. Create a design that means something to you. Take your time and plan your work.



Return of the Condor







California Condors were close to extinction. Through science and conservation efforts, they will soon take to our skies.

Condors are a type of vulture. They do not hunt or attack their prey, so they must rely on dead animals for food.



Draw the correct symbols in the boxes to label each *adaptation* on the Condor



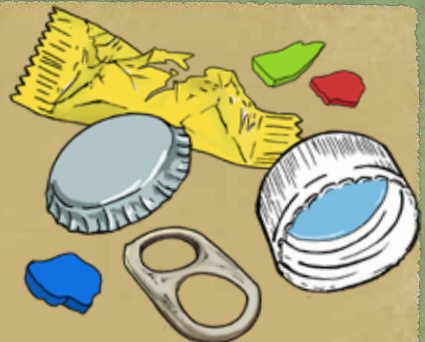
-  **Bald Head** - easy to clean after a messy meal
-  **Wings** - are strong and help them fly over 100 miles a day
-  **Beak** - strong for tearing into tough hides
-  **Crop** - a pouch where the condor can store food
-  **Ruff** - a scarf of feathers helps warm and cool their bald heads
-  **Eyes** - help the condor see food as it soars high in the sky



Problems in Paradise

These incredibly curious condors often mistake **micro-trash** for food, which can make them very sick. Look out for trash in the park! If you can, safely remove it with the help from an adult.

Take a picture with your trash collection and show it to a ranger for 2 badge points!



Micro-trash can be bits of plastic, glass, or metal.

Hidden Life on the Edge



We have a great wildlife tip for you: look for wildlife on the edge of the forest.

Earn 2 badge points by discovering the hidden wildlife in the coloring sheet. Find a northern spotted owl, banana slug, bobcat, black bear, flying squirrel, pileated woodpecker, striped skunk, Pacific wren, and wandering salamander.



Fish for The Right Color



Salmon are amazing fish that travel between freshwater streams and the salty ocean! Salmon change their coloring for survival, adapting to their environment. Earn 2 badge points by coloring each fish according to their location.

Chinook Salmon



This salmon is in the ocean. Dark colors on top and light colors on bottom help them to camouflage from predators both above and below them.

Coho Salmon

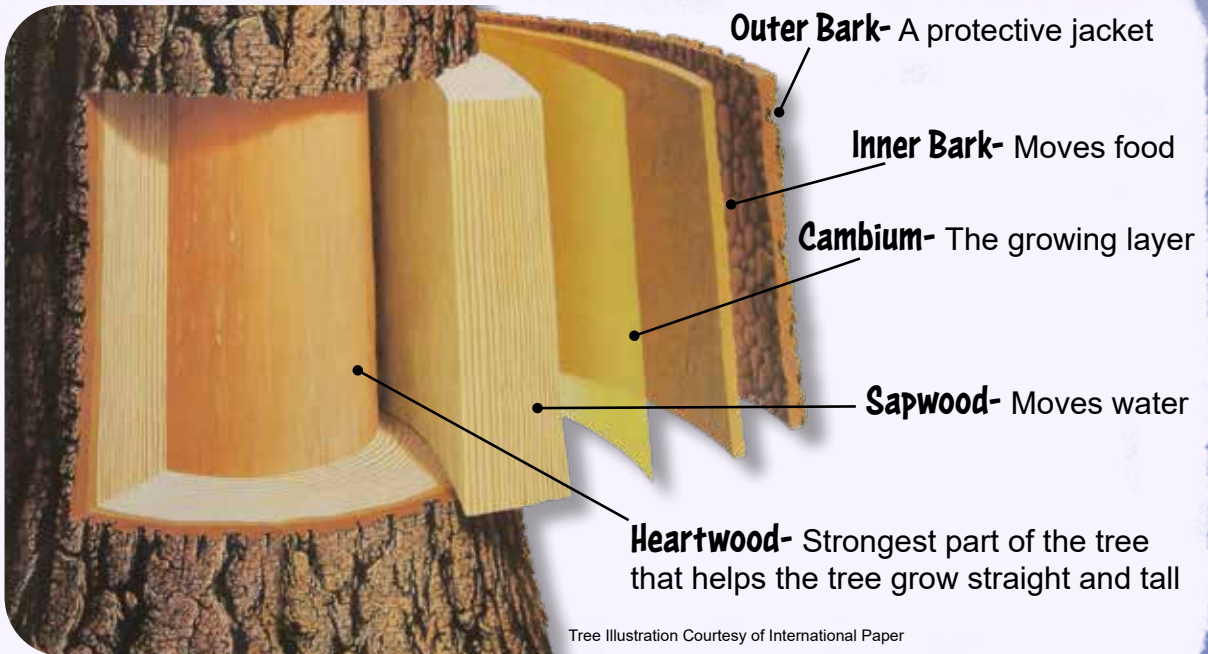


This salmon is ready to head up their native stream to reproduce. Their bright colors are used to attract a mate.



How a Tree Works

Just like your bike or your computer, trees have different parts that do different jobs. **Earn badge points by learning the parts of a tree and what jobs they do. Then, solve the crossword puzzle below.**

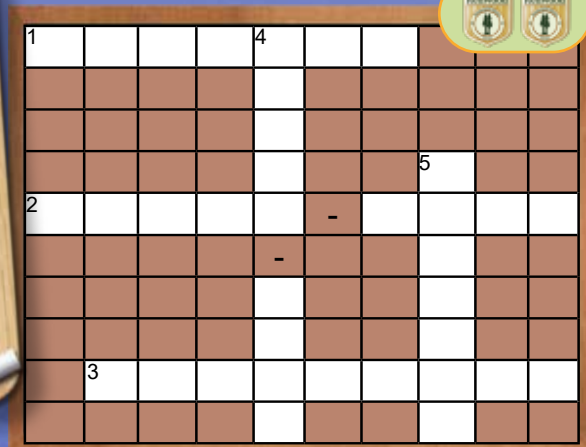


Across

1. The growing part
2. A tree's protective jacket
3. The strongest part

Down

4. The part that moves food
5. The part that moves water



Timber Time



Did you know that about 95% of the original coast redwood forest was cut down? That means for every 100 coast redwood trees, 95 were used to make things.

A great question to ask a ranger is, "What makes the wood in the coast redwood trees so special?" **Earn 2 badge points by finding 5 things made out of redwood in Redwood National and State Parks. Write or draw what you find on the notes below.** Then, be ready to talk with a ranger about why redwood is some of the best wood on earth!



Tree Illustration Courtesy of International Paper



How Can You Help?

Did you know that human food and garbage can hurt wildlife?

Keeping our parks clean and safe is important! **Earn three badge points by decoding the secret message to find out what you can do to help wildlife in Redwood National and State Parks. Some of the pictures make the sound of the word. You may also have to subtract (-) or add (+) letters to the word.**



-y +ep



_____ wildlife _____ by



-t+ding



-t+d

_____ them _____



-b

N

_____ food _____



_____ and food lockers.

Stump the Ranger



Find an animal—any animal—anywhere in the parks. Fill out the “Stump the Ranger” form and head to a visitor center. Read the form to the ranger (**but don’t tell the ranger what you saw!**). The ranger can ask you **3 questions** and gets **1 guess**. You get 3 badge points whether they guess it right or wrong!

A brown clipboard with a silver clip at the top. The clip has the text 'Redwood National and State Parks Stump The Ranger Form' written on it. The form is white with a green header section and several lined areas for text.

**Redwood National and State Parks
Stump The Ranger Form**

Secret animal you saw:

Date: _____ Time: _____

Redwood Habitat: _____

Location: _____

Ranger Question #1: _____

Ranger Question #2: _____

Ranger Question #3: _____

Ranger's Guess: _____

Redwood History Explorer

Are you ready to explore some of our local history? A historian learns about the past and shares it with others.

Earn 3 badge points by exploring the places on the map and solving the riddles of Redwood National and State Parks history.

Ranger Tip
Look for signs and plaques that explain the history of the area.

Today I'm a pond with rushes and reeds.
Years ago, this is not what you'd see.
I was once a place full of floating trees!

What am I? _____



I was built to keep America safe from harm.
Inside...soldiers, concrete, arms...
Outside...chicken, goats, house on a farm.

What am I? _____



I am cliffs of gold,
Made of stream beds old, Old, OLD!
Ohh...the treasures I still hold!

What am I? _____



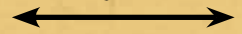
Map Maker



A cartographer is a person who makes maps. They share their maps and their favorite places so that everyone can explore Redwood National and State Parks.

For 3 badge points, make a map of a special place that you visited today. Take your time. Include colors and symbols on you map. When you get home, share your map with a friend.

Map Legend



Colors



 = Water


 =

 =

 =

Symbols



 = My Location

=

=

=



Banana Slug Slide

Hey Junior Ranger...I'm D.J. Slime
Listen up close to my banana slug rhyme

Get badge points...through song and moves
In front of a ranger...show your groove

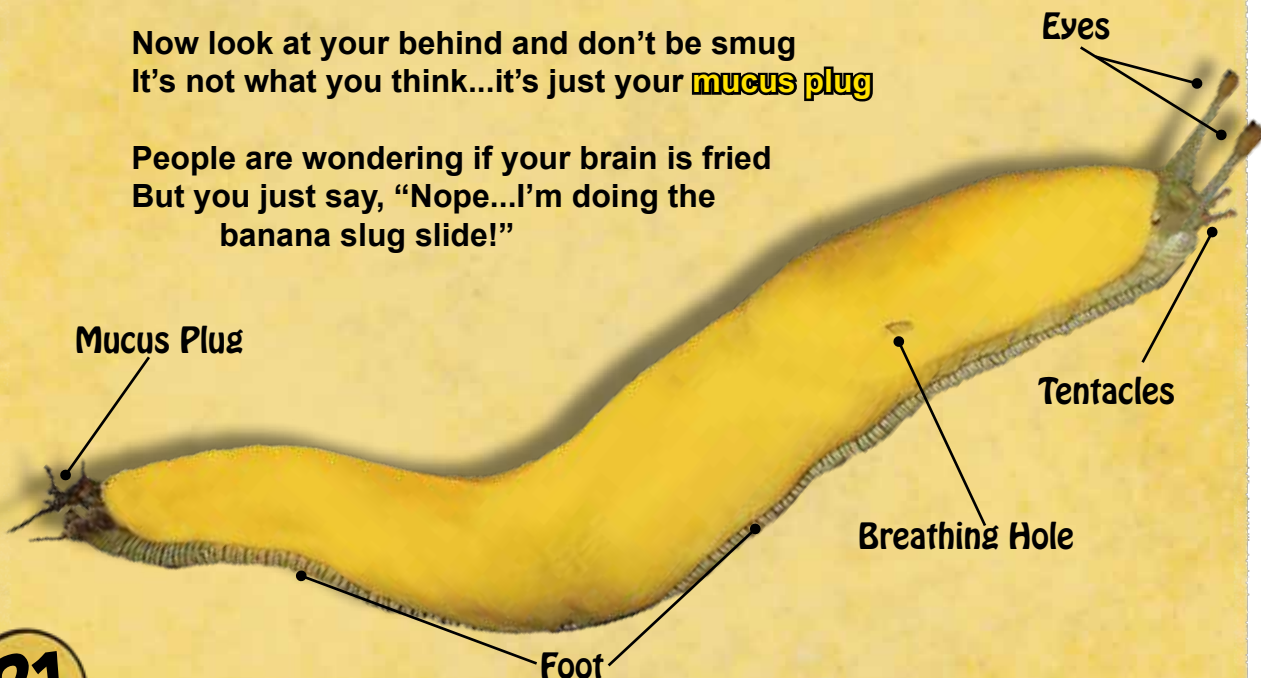
Put one **foot** on the other...cause you only got one
Yeah, you look crazy...but you know it's fun

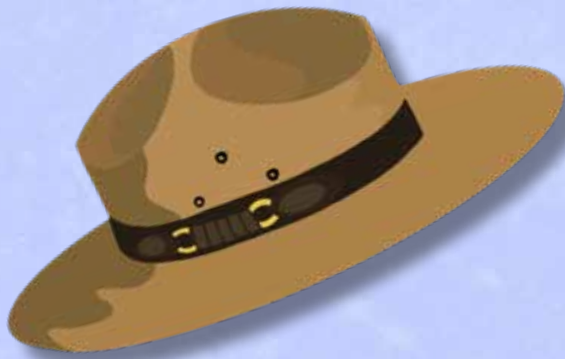
With your feet as one...get ready to go
Shake it left or right...move heel to toe

Throw your **tentacles** (arms) in the air and wave your good-byes
Make your hands in tight fists and call'em your **eyes**

Now look at your behind and don't be smug
It's not what you think...it's just your **mucus plug**

People are wondering if your brain is fried
But you just say, "Nope...I'm doing the
banana slug slide!"





Be a Junior Ranger at other parks!

There are more junior range programs
with the National Park Service
and California State Parks!

www.nps.gov/webrangers

www.nps.gov/kids/

www.parks.ca.gov/?page_id=22783

Bring YOUR class to the redwoods!

www.nps.gov/redw/forteachers/index.htm

Great books & gifts

can be found on our partner's online store!

www.redwoodparksconservancy.org

Check us out online!

Videos, photos, and park information can
be found on our park website and social
media platforms.

www.nps.gov/REDW

Ask a park ranger!

Do you have questions for a
ranger? Looking for help with
your school project?

Email us at

redw_information@nps.gov

Call us at

(707) 464-6101

Or mail a letter to

Write a Ranger

1111 Second Street

Crescent City, CA 95531



@redwoodnps

Jr. Ranger Certificate

This certifies that _____
has earned enough badge points and is now an official
Redwood Junior Ranger!

Sworn in by Ranger _____



Jr. Ranger Pledge

I am a Redwood Ranger!
My badge points I did earn.
I learned a lot from this special place
but there is still so much to learn.

~

I am a Redwood Ranger!
My job is never done.
I promise to keep on learning
and share it with everyone.

Teamwork



Working as a team, California State Parks and the National Park Service created the Redwood Junior Ranger program. Printing was made possible by the generosity of Redwood Parks Conservancy.