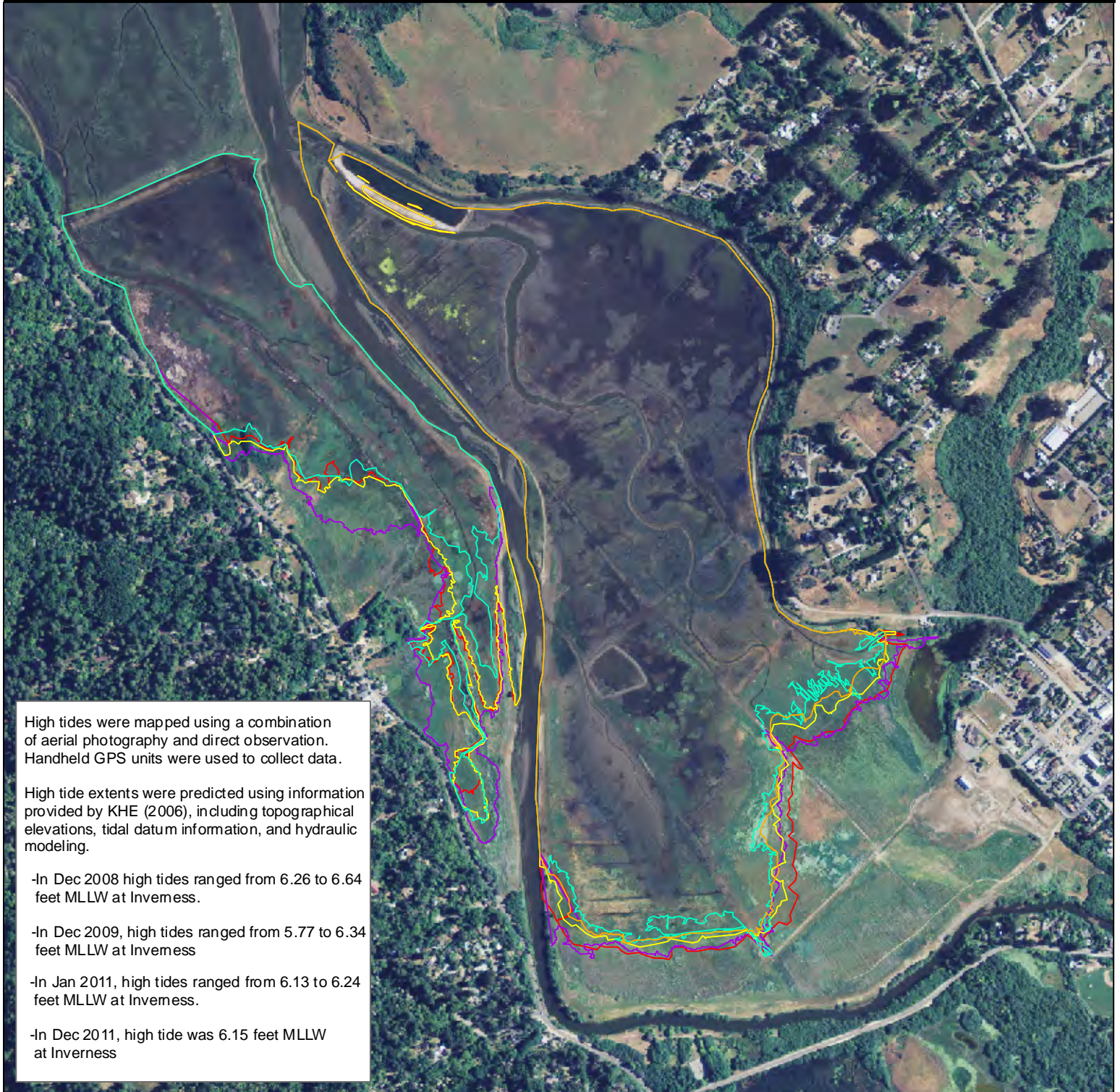


High Tides Dec 2008 - Dec 2011

Giacomini Wetland Restoration Project



High tides were mapped using a combination of aerial photography and direct observation. Handheld GPS units were used to collect data.

High tide extents were predicted using information provided by KHE (2006), including topographical elevations, tidal datum information, and hydraulic modeling.

-In Dec 2008 high tides ranged from 6.26 to 6.64 feet MLLW at Inverness.

-In Dec 2009, high tides ranged from 5.77 to 6.34 feet MLLW at Inverness

-In Jan 2011, high tides ranged from 6.13 to 6.24 feet MLLW at Inverness.

-In Dec 2011, high tide was 6.15 feet MLLW at Inverness



National Park Service
Point Reyes National Seashore/
Golden Gate National Recreation Area
Marin County, CA



-  High Tide Dec 2011
-  High Tide Jan 2011
-  High Tide Dec 2009
-  High Tide Dec 2008
-  Predicted High Tide