



FIRE IN THE ECOSYSTEM  
fire in the wildland-urban interface

# Remembering the Vision Fire 1995-2005



National Park Service  
U.S. Department of the Interior

Point Reyes National Seashore  
1 Bear Valley Road  
Point Reyes Station, CA 94956

BULK RATE  
U.S. POSTAGE PAID  
U.S. Department  
of the Interior  
PERMIT NO. G-83

FRONT  
Near Limantour Road  
*by Bruce Farnsworth, NPS*  
Paradise Ranch Estates

*by Ray Dwelly*  
CENTER

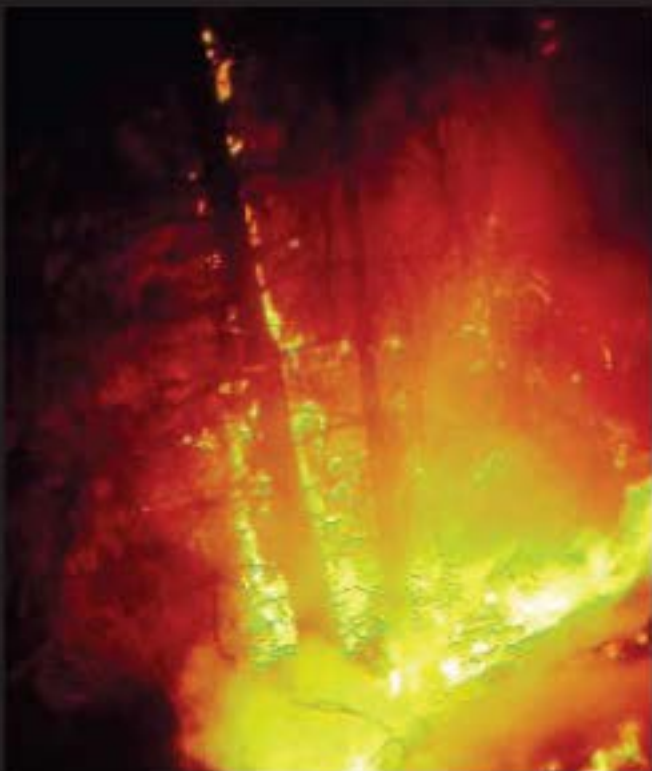
High Intensity Fire  
*by Bruce Farnsworth, NPS*  
Marin manzanita (*Arctostaphylos virgata*)  
*by Doreen Smith*

INSIDE  
Base Camp at Bear Valley  
*courtesy Marin County Fire Department*

Bishop Pines  
*NPS*

## Postal Patron

EXPERIENCE YOUR AMERICA





## 10 YEAR ANNIVERSARY EVENTS

**Saturday, September 10, 10 am-2:30 pm**

### **Nature Hike: Tour of the Burn Area**

See how the landscape has responded to the Vision Fire during a visit to the burn area with Bay Nature and NPS Fire Education Specialist, Jennifer Chapman. Hike begins at the Bayview Trailhead and covers approximately 5 miles.

**Saturday, September 17, 10 am-4:30 pm**

### **Field Seminar: Fire in the Ecosystem**

Point Reyes National Seashore Association Field Seminar  
Presentations 10 am-12:30 pm, Muddy Hollow Field Trip 1:30-4:30 pm

Changes in habitat caused the populations of some species to increase and others to decrease. Monitoring and research in the burn area has led to many important insights about the ecosystem.

Laurel Collins, Geomorphologist, Watershed Sciences - *Effects on the Watershed*

Tom Gardali, Biologist, PRBO Conservation Science - *Landbirds*

Barbara Holzman, Professor of Biogeography, S.F. State University - *Effects on Vegetation*

Jerry Powell, Professor Emeritus of Insect Biology, U.C. Berkeley - *Butterflies and Moths*

Gary Fellers, Biologist, U.S. Geological Survey, Point Reyes Field Station - *Wildlife*

Registration required, call 415-663-1200. Suggested donation \$15-\$35.

**Saturday, October 1, 10 am-4 pm**

### **Field Seminar: Fire in the Wildland-Urban Interface**

Point Reyes National Seashore Association Field Seminar  
Presentations 10 am-12 pm, Mount Vision Field Trip 1-4 pm

Firefighting strategies used during the Vision Fire were based on the priority to protect life and property. Extensive efforts were made to rehabilitate firelines to prevent long term scarring to the landscape.

Ed Mestre, Battalion Chief, Marin County Fire Department - *Firefighting Operations and Structure Protection*

Keith Parker, Senior Captain, Marin County Fire Department (Tomaes Station) - *Initial Attack and Defensible Space*

Roger Wong, Fire Management Officer, Point Reyes National Seashore - *Fire Management Policy at the Seashore*

Alison Forrestel, Fire Ecologist, National Park Service, S.F. Bay Area - *Emergency Rehabilitation for Resource Protection*

Registration required, call 415-663-1200. Suggested donation \$15-\$35.

**Sunday, October 2, 1-4 pm**

### **Environmental Action Committee of West Marin Field Trip: Follow-up on the Phoenix Report**

Visit the neighborhoods affected by the Vision Fire with foresters who prepared the community recovery plan. Includes a 10-year update on fire ecology, vegetation management, and safety improvements. This easy 2 mile hike, led by Tom Gaman, Ray Moritz, and Carol Rice, begins at the Bayview Trailhead. RSVP to Tom Gaman, 415-669-7100. Suggested donation to EAC, \$20.

**Sunday, October 2, 4-9 pm**

### **Celebrating Rebirth - A Gathering on Inverness Ridge**

Slide show, pot luck, artwork, and stories.

Hosted by photographer Richard Blair and artist Kathleen Goodwin. RSVP 415-663-1615.

**Saturday, October 8, 7-9 pm**

### **Readings: Point Reyes Ten Years After the Vision Fire**

Point Reyes Books, 11315 State Route 1, Point Reyes Station

Presentations by Geoff Coffey, Sim Van der Ryn, Ane Carla Rovetta, Greg Sarris. Sponsored by Bay Nature and Point Reyes Books.

**Saturday, October 15, 2-4 pm**

### **Discussion: Community Perspectives - Reflection on the Vision Fire**

Red Barn, Bear Valley, Point Reyes National Seashore

A public dialogue on ecology, firefighting, private property, and fire safety. Guest speakers will present insights for discussion. Reception to follow.

The coastal environment can experience intense, weather-driven fire events. These are usually started by a variety of human activities, and are difficult to control because of hot, dry, fast-moving off-shore winds. What was learned during the Vision Fire can affect our future decisions.

Sarah Allen, Science Advisor, Point Reyes National Seashore

Ken Massucco, Chief, Marin County Fire Department

Anne Murphy, Home Ranch

Ray Moritz, Fire Safe Landscaping Consultant

*...Bear Valley was transformed, as firefighters quickly made this their home...Like the bishop pines, they responded in large numbers to the event...*

*...An illegal campfire, rekindled by strong east winds, had escaped initial attack. Before the first night was over, the fire had raced to the ocean, and forty five structures were lost...*

*...Exhaustion, and sadness for what could not be replaced, was followed by renewal. After the rains, there was a great resurgence of life...*

FOR MORE INFORMATION CALL 415-464-5133