

# A Shrine to Earth's Power

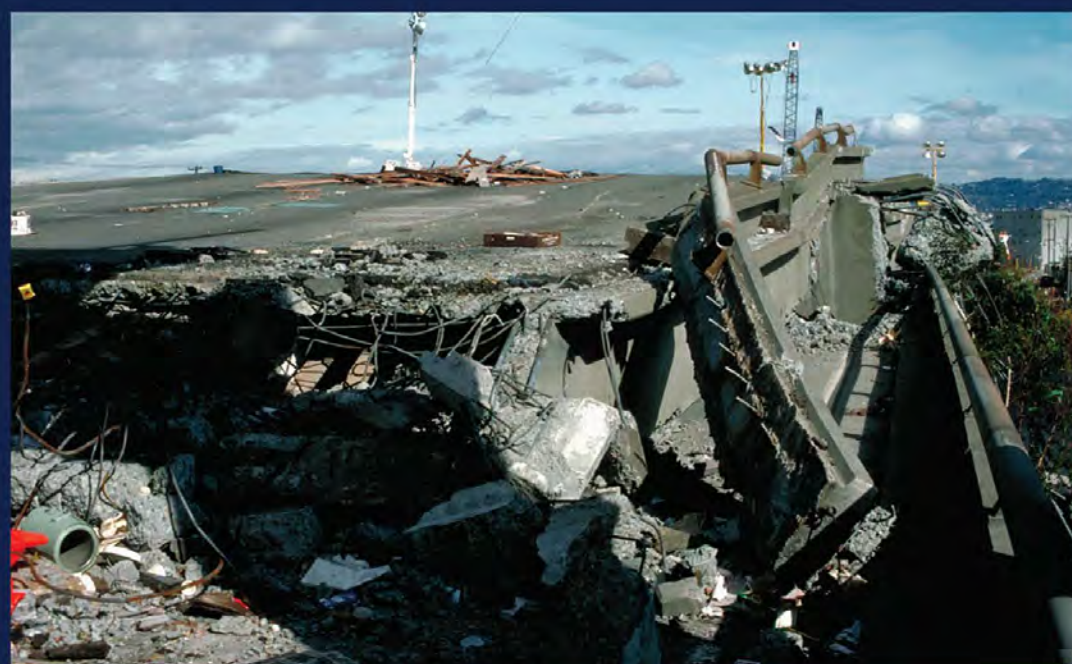


Welcome to the San Andreas fault zone. Here where the North American and Pacific plates scrape against one another, we witness forces of change. This world-famous fault holds secrets of geologic processes under its long bays and valleys. Looking closely, you may find clues about earth's restlessness that shape the land, its inhabitants and all our lives.



Where earth's plates collide, the land is subject to unpredictable and potentially disastrous earthquakes. While a few people may have experienced big quakes like Loma Prieta, many more know the lore of the great quake that devastated San Francisco in 1906.

The San Andreas fault system is more than a mere unnerving, inevitable force of destruction; as millennia pass, it is a force of creation. As you walk this trail, enjoy the landscape, a gift of earthquakes.



Damage caused by the Loma Prieta Quake

USGS Photo



Looking northwest as the fault continues under Tomales Bay

© Robert Campbell

Prepare yourself for the uncertainty of walking in the fault zone...