

# Vegetation Assembly 2011

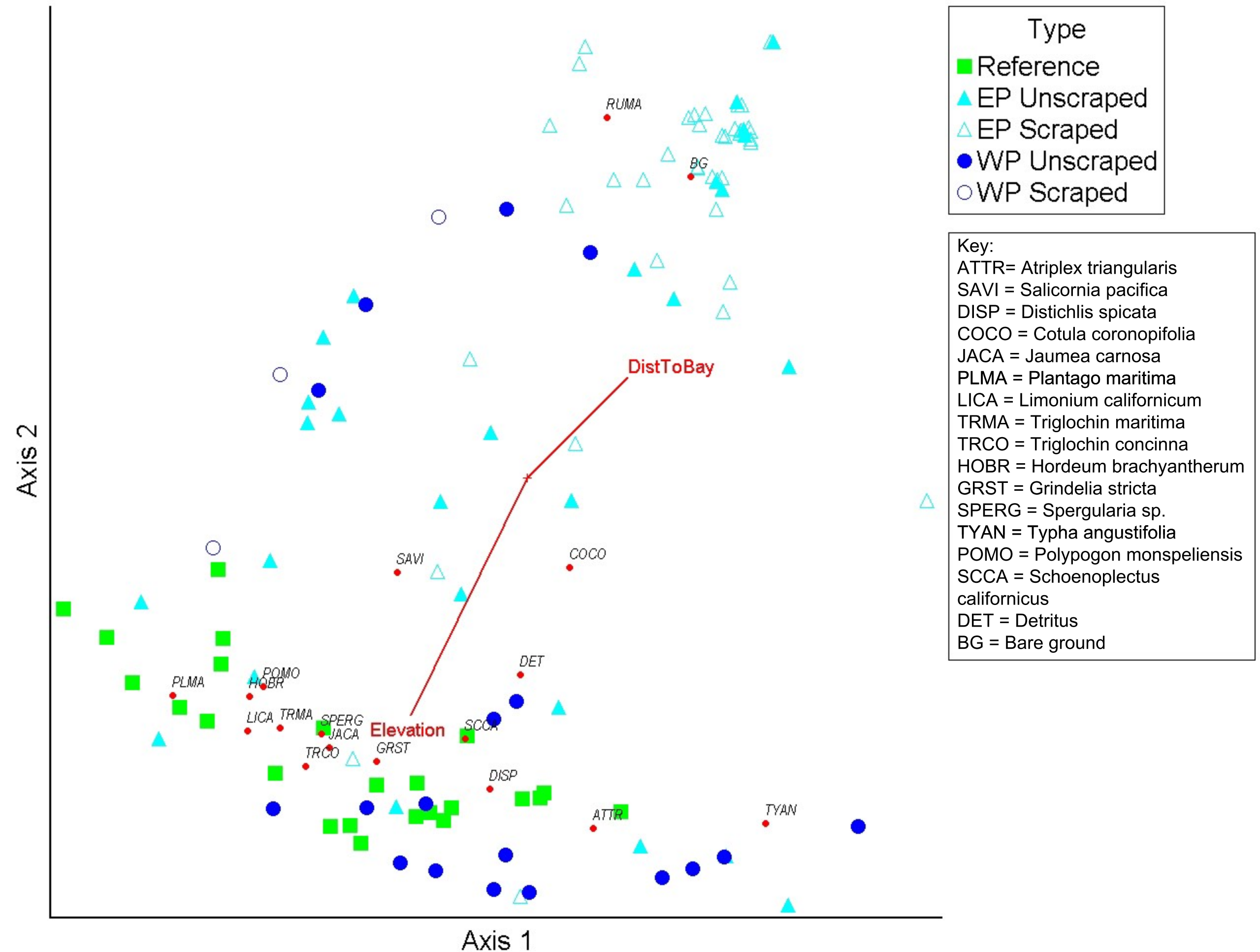


Figure A5. Axis 1 x Axis 2. NMS Results for 2011 Species Composition and Environmental Variables in the Restoration Project Area as compared to the Reference Sites. Final stress = 10.11246, Instability = 0.00603, Final dimensions = 3 (max = 6), 500 iterations. Axis 1  $R^2=0.247$ , Axis 2  $R^2=0.262$