



**National Park Service
U.S. Department of the Interior**

Pinnacles National Park

5000 Highway 146
Paicines, CA 95043

2025 Superintendent's Compendium
Of Designations, Closures, Permit Requirements
and Other Restrictions Imposed Under
Discretionary Authority.

831-389-4486 phone
831-389-4489 fax

Approved:

RICHARD MOORER Digitally signed by RICHARD MOORER
Date: 2025.05.08 11:45:13 -0700

Richard Moorer, Acting Superintendent

5/8/25

Date

A. INTRODUCTION

1. Superintendent's Compendium Described

The Superintendent's Compendium is the summary of park specific rules implemented under 36 Code of Federal Regulations (36 CFR). It serves as public notice, identifies areas closed for public use, provides a list of activities requiring either a special use permit or reservation, and elaborates on public use and resource protection regulations pertaining specifically to the administration of the park. The Superintendent's Compendium does not repeat regulations found in 36 CFR and other United States Code and CFR Titles, which are enforced without further elaboration at the park level.

The regulations contained in 36 CFR, Parts 1-7, are the basic mechanism used by the National Park Service (NPS) to preserve and protect the natural and cultural resources of the park and to protect visitors and property within the park. Parts 1 through 6 are general regulations applicable to all areas of the National Park system, and Part 7 contains special regulations specific to individual parks. Each of these Parts has many sections and subsections articulating specific provisions. Within some of these Part 1-7 sections and subsections, the Superintendent is granted discretionary authority to develop local rules to be responsive to the needs of a specific park resource or activity, park plan, program, and/or special needs of the general public.

As an example, 36 CFR 1.5(a) *Closures and Public Use Limits* provides the Superintendent certain discretion in allowing or disallowing certain activities. The authority granted by the Section, however, requires the Superintendent to comply with the Administrative Procedures Act (6 USC Section 551), which requires public notice on actions with major impact on visitor use patterns, park resources or those that are highly controversial in nature.

Another example is 36 CFR 1.6 *Permits*, which allows the Superintendent to require a permit for certain uses and activities in the park. This Section, however, requires that a list of activities needing a permit (and a fee schedule for the various types of permits) be maintained by the park.

A final example is 36 CFR 2.1(c) (1) *Preservation of Natural, Cultural and Archeological Resources*, which provides the Superintendent the authority to designate certain fruits, nuts, berries or unoccupied seashells which may be gathered by hand for personal use or consumption. This activity can occur, however, only if a written determination shows that the allowed activity does not adversely affect park wildlife, the reproductive potential of a plant species, or otherwise adversely affect park resources.

This Compendium should be used in conjunction with Title 36 CFR, Parts 1-7, to more fully understand the regulations governing the use and enjoyment of all the areas of the national Park System.

[A copy of Title 36, CFR, can be purchased](https://www.gpo.gov) from the U.S. Government Printing Office at: www.gpo.gov

OR

Superintendent of Documents
P.O. Box 371954
Pittsburgh, PA 15250-7954

The CFR is also available on the Internet at: www.ecfr.gov.

2. Laws and Policies Allowing the Superintendent to Develop This Compendium

The National Park Service (NPS) is granted broad statutory authority under Title 54 United States Code (U.S.C.) §100101(a) (formerly 16 U.S.C. 1a-1, "Organic Act") to "...regulate the use of the National Park System by means and measures that conform to the fundamental purpose of the System units, which purpose is to conserve the scenery, natural and historic objects, and wild life in the System units and to provide for the enjoyment of the scenery, natural and historic objects, and wild life in such manner and by such means as will leave them unimpaired for the enjoyment of future generations." In addition, Title 54 U.S.C. §100751(a) allows the NPS, through the Secretary of the Interior, to "prescribe such regulations as the Secretary considers necessary or proper for the use and management of System units."

In 1970, Congress amended the NPS Organic Act to clarify its intentions as to the overall mission of the NPS. Through the General Authorities Act of 1970, Congress brought all areas administered by the NPS into one National Park System and directed the NPS to manage all areas under its administration consistent with the Organic Act of 1916.

In 1978, Congress amended the General Authorities Act of 1970 and reasserted System-wide the high standard of protection defined in the original Organic Act by stating "Congress further reaffirms, declares, and directs that the promotion and regulation of the various areas of the National Park System, as defined by Section 1 of this Title, shall be consistent with and founded in the purpose established by Section 1 of this Title, to the common benefit of all people of the United States."

In addition to the above statutory authority, the Superintendent is guided by established NPS policy as found in the *NPS Management Policies* (2006). The Superintendent is also guided by more specific policies promulgated by the Director, National Park Service, in the form of Director's Orders. As stated in the Management Policies, the primary responsibility of the NPS is to protect and preserve our national natural and cultural resources while providing for the enjoyment of these resources by visitor and other users, as long as use does not impair specific park resources or overall visitor experience. The appropriateness of any particular visitor use or recreational experience is resource-based and will vary from park to park; therefore, a use or activity that is appropriate in one park area may not be appropriate in another. The Superintendent is directed to analyze overall park use and determine if any particular use is appropriate. Where conflict arises between use and resource protection, where the Superintendent has a reasonable basis to believe a resource is or would become impaired, than that Superintendent is obliged to place limitations on public use.

3. Consistency of This Compendium with Applicable Federal Law and Requirements

The Superintendent's Compendium is not considered a significant rule requiring review by the Office of Management and Budget under Executive Order 12866. In addition, this Compendium will not have a significant economic effect on a number of small entities nor impose a significant cost on any local, state or tribal government or private organization, and therefore does not fall under the requirements of either the Regulatory Flexibility Act or the Unfunded Mandates Reform Act.

The actions and requirements described in this Compendium are found to be categorically excluded from further compliance with the procedural requirements of the National Environmental Policy Act (NEPA) in Department of the Interior (DOI) Guidelines 516 DM 6 and as such, an Environmental Assessment will not be prepared.

4. Development of the Requirements of the Superintendent's Compendium

As outlined above, the NPS has broad authority and responsibility to determine what types of uses and activities are appropriate in any particular National Park System area. The requirements of the Superintendent's Compendium are developed through an analysis and determination process. The decision criteria used during this process are:

- Is there use or activity consistent with the NPS Organic Act and NPS policy?

- Is the use or activity consistent and compatible with the park's enabling legislation, management objectives, and corresponding management plans?
- Will the use or activity damage the park's protected natural and cultural resources and other protected values?
- Will the use or activity disturb or be in conflict with wildlife, vegetation, and environmental protection actions and values?
- Will the use or activity conflict with or be incompatible with traditional park uses and activities?
- Will the use or activity compromise employee or public safety?

5. Applicability of the Compendium

The rules contained in this Compendium apply to all persons entering, using, visiting or otherwise present on Federally owned lands, including submerged lands, and waters administered by the NPS within the legislative boundaries of the park. This includes all waters subject to the jurisdiction of the United States, including all navigable waters.

6. Enforcement of Compendium Requirements

NPS Law Enforcement Park Rangers enforce the requirements of the United State Code, 36 CFR, and this Superintendent's Compendium.

7. Penalties for Not Adhering to the Compendium Requirements

A person who violates any provision of the regulations found in 36 CFR, Parts 1-7, or provisions of this Compendium, is subject to a fine as provided by law (18 U.S.C. 3571) up to \$5,000 for individuals and \$10,000 for organizations, or by imprisonment not exceeding six months (18 U.S.C. 3559), or both, and shall be adjudged to pay all court costs associated with any court proceedings. You may receive a list of fines associated with any particular provision by contacting the Chief Ranger at the park address found below.

8. Comments on the Compendium

The Compendium is reviewed annually and revised as necessary. The park welcomes comments about its program and activities at any time.

Written comments on the Compendium may be submitted to:

Superintendent

Pinnacles National Park

5000 East Entrance Road

Paicines, CA 95043

9. Effective Date of the Superintendent Compendium

The Superintendent's Compendium is effective on the approval date listed on the first page of this document and remains in effect until revised for a period up to one year.

10. Additional Information

Some of the terms used in this Compendium may have specific meaning defined in 36 CFR 1.4 *Definitions*.

11. Availability

Copies of the Compendium are available at Pinnacles National Park; 5000 East Entrance Road, Paicines, CA 95043. It may also be found at www.nps.gov/PINN.

B. SUPERINTENDENT'S COMPENDIUM

In accordance with regulations and the delegated authority provided in Title 36, Code of Federal Regulations ("36 CFR"), Chapter 1, Parts 1-7, authorized by Title 54 United States Code, §100751, the following provisions apply to all lands and waters administered by the National Park Service, within the boundaries of Pinnacles National Park. Unless otherwise stated, these regulatory provisions apply in addition to the requirements contained in 36 CFR, Chapter 1, Parts 1-7.

Written determinations, which explain the reasoning behind the Superintendent's use of discretionary authority, as required by Section 1.5(c), appear in this document identified by italicized print.

36 CFR §1.5 – VISITING HOURS, PUBLIC USE LIMITS, CLOSURES, AND AREA DESIGNATIONS FOR SPECIFIC USE OR ACTIVITIES

(a)(1) The following visiting hours and public use limits are established for the listed portions of the park, and the following closures are established for all or a portion of the park to all public use or to a certain use or activity:

Hours of Operation:

- Pinnacles Nature Center (East Side) is open daily from 10:00 am to 3:00 pm, depending on available staffing.
- West Pinnacles Visitor Contact Station is open daily from 10:00 am to 3:00 pm, depending on available staffing.
- Inbound access to the West side of the park is open daily at 7:30 am. Inbound access closes at 8:00 pm.

Public Use Limits:

Inbound access to the West side of the park is open approximately during daylight hours. The hours are 7:30 am to 8:00 pm.

Determining Factors: The automatic gate at the western boundary allows access to the park during daytime hours but does not allow access after dark. As there are no overnight accommodations on the west side of the park, the west entrance is restricted to day-time entry. Those visitors in the park after dark can activate the gate to leave, but the gate will not open to those outside the park.

Closures:

- **Buildings and Facilities**
 - The following National Park Service buildings and facilities are closed to the public without permission of the Superintendent or his/her designee:
 - All park residential areas.
 - All park administrative offices, ranger stations, shops, and other work areas.
 - National Park Service maintenance yards and associated buildings.
 - Water treatment facilities.
 - Sewage treatment facilities.
 - Park weather stations.
 - Fire lookout.
- **Roadways**
 - The following National Park Service roadways are closed to public vehicle use without permission of the Superintendent or his/her designee:
 - Unpaved roads within the Pinnacles Ranch area are restricted to specific administrative use, use by bicycles (see 4.30 below), or as an easement/access for the local landowner.

- Unpaved South Wilderness road, from East Entrance road to the old shooting range and beyond to include Grassy Canyon Road (administrative use only).
- Unpaved road from “Double Gates” (located on the West Entrance road, 1.0 mile from the West Entrance) to the west boundary (administrative use, and by permit as an easement/access for local landowners).
- North Chalone Peak road (administrative use only).
- Condor Gulch service road (administrative use only).
- All water tank service roads (administrative use only).
- Any other service and administrative roads, so designated by signs and/or locked gates, or barricaded with logs and/or boulders.
- The parking areas at the East Entrance Station are for administrative use only.

Determining Factors: Residences are rented and occupied by National Park Service employees. Allowing visitor entry or use to these buildings would significantly disturb the privacy and disrupt the residential life of the occupants. The other buildings, facilities and locations are administrative sites used by the National Park Service in the management and administration of the park. Visitor entry or use of these sites without permission would interfere with the protection of government property, create potentially hazardous conditions for visitors, and interfere with park operations. Because these sites may be located in remote areas and/or staffed intermittently, it is not practical to expect park staff to provide for security and safety, and less restrictive measures will not suffice.

- **Cave Closures**

- The caves within the park may be administratively closed due to weather, high water, vandalism, or other conditions that threaten visitor or resource safety. Entry into the caves during these closures is prohibited.

Determining Factor: High water events pose extreme hazards to visitors in the caves. Other events such as damage from vandalism or disruptions due to maintenance activities may create an unacceptable hazard to visitor safety.

- **Bear Gulch Cave Closures for Wildlife Protection**

All or portions of the Bear Gulch Cave system will be closed according to the following schedule:

July 15 through May 15:	Upper 1/3 of the cave closed
May 15 through July 15:	Entire cave closed
0-4 weeks mid spring (March):	Entire cave may be open
0-4 weeks mid fall (October):	Entire cave may be open
High water events	Entire cave closed

This schedule is subject to modification based upon monitoring the bat colony by Pinnacles National Park resource management staff. The opening is based on bat populations and the closing is set on the last day of the month in March and October.

Determining Factors: Caves are closed or restricted in access during the listed times to provide protection for a nesting colony of Townsend's Big-Eared Bat in the Bear Gulch Caves. The schedule is subject to modification based on monitoring of the bat colony by Pinnacles National Park resource management staff.

- **Off Trail Hiking and Rock Climbing:**

Off trail hiking and rock climbing may be restricted in areas so designated for protection of park resources. These areas will be posted with signs and printed material will be made

available to visitors at the entrance station, visitor centers and website (www.nps.gov/PINN).

***Determining Factor:** These restrictions are imposed when it has been determined by the park's resource management staff that there is a need to protect raptors or other wildlife during critical periods of time in specific areas.*

- **Stock Use**

All trails are closed to stock use except for park administrative use.

***Determining Factors:** It has been determined that using stock on the current trails at Pinnacles National Park creates conflict with other users as the trails are not designed to meet the demands of hikers and horse users safely, helps minimize the introduction of non-native invasive plants, and reduces trail degradation.*

- **Condor Release Site**

The following areas are closed to prevent unnecessary human interactions with the endangered California condor. The size of the area, about a one-half mile radius around the site, provides a visual and aural buffer from human disturbance for the animals.

The following areas, based on the Mount Diablo Meridian, San Benito County, and within the boundaries of Pinnacles National Park, CA, are closed to public access, use of fire, and smoking:

- 1) Township 17 South, Range 8 East, Section 5, approx. 651 acres.
- 2) Township 17 South, Range 8 East, Southern 3/4 of Section 6, approx. 480 acres.
- 3) Township 17 South, Range 8 East, Northern 1/4 of Section 7, approx. 160 acres.
- 4) Township 17 South, Range 8 East, Northern 1/4 of Section 6, lands 1200 feet above sea level altitude and southeast of Highway 146, approximately 140 acres.
- 5) Township 16 South, Range 8 East, Southern 3/4 of Section 31, lands 1200 feet above sea level altitude and southeast of Highway 146, approximately 150 acres.

These areas are discernable on the USGS 7.5-minute topographic maps North Chalone Peak, CA and Topo Valley, CALIF. See Appendix 1 for a map of these areas.

***Determining Factors:** The Superintendent has determined that these prohibitions and restrictions are necessary for resource protection.*

- **Raptor and Condor Advisories and Closures**

To maximize the potential of successful nest establishment Pinnacles National Park has, since 1988, advised that all visitors refrain from rock climbing and off-trail hiking in sensitive areas during the raptor nesting season. These same areas are also often used by the critically endangered California Condor for which additional advisories and closures may be placed into effect.

These protective measures often go into effect early in the year and may remain until June, July or later as necessary to protect the birds. However, as nesting activity is monitored by Park staff, additional sensitive areas may be identified and listed as closed, or some areas may be opened. Please check with a ranger, check the park website, check the Climber Information Bulletin Boards, or visit the [Friends of Pinnacles](#) and [Mud N' Crud](#) websites for more information on advisories and closures as you plan your climbing and hiking trips.

These advisories generally do not affect hiking along the Park's primary trail system.

***Determining Factors:** Over 20 species of raptors have been documented at the park, with 10 species*

nesting on a yearly basis, including the highest density of nesting prairie falcons in the country. The geography of the park provides raptors with ideal nesting sites, both on the inaccessible cliffs and rock formations used by prairie falcons, golden eagles, red-tailed hawks, and American kestrels, and on the oaks and pines along the riparian corridors used by Cooper's hawks, sharp-shinned hawks, and red-shouldered hawks. Endangered California Condors also utilize many of these same features for nesting and roosting sites. Limiting human activities in these areas maximizes the potential of successful nest establishment for raptors and condors. Intentionally disturbing wildlife nesting, breeding, and other activities is a violation of Title 36 of the Code of Federal Regulations (Section 2.2 (a) (2)). Intentionally disturbing California Condor nesting, breeding, and other activities can be a violation of the Endangered Species Act (16 U.S.C. §1531 et seq).

- **Wilderness**

National Park wilderness, including trails, is closed to the possession or use of any machine, conveyance, device, or vehicle activated and propelled by a motor, engine, or other non-living power source. The use or possession of these, and all other forms of mechanical transport in wilderness, are prohibited. This includes, but is not limited to, cars, trucks, all-terrain vehicles (ATV), motorcycles, aircraft, snow machines, motorboats, chain saws, weed whackers, power drills, power saws, generators, compressors, windmills or turbines, and snow or leaf blowers.

National Park wilderness, including trails, is closed to the possession or use of any contrivance for moving people or material in or over land, water, snow, or air that has moving parts, that provides a mechanical advantage to the user, and is powered by a living or non-living power source. This restriction is for the preservation of wilderness character. This includes, but is not limited to, non-motorized wheeled vehicles, conveyances, and devices, such as bicycles, Segway™ and other Electric Personal Assistance Mobility Devices (EPAMD), carts, game carriers, canoe dollies, wheelbarrows, wagons, strollers, ski kites, sailboats/boards, hang gliders and paragliders. Wheelchairs as defined in Title V Section 507(c) of the Americans with Disabilities Act (ADA) may be used by persons with disabilities.

Determining Factor: At total of 15,985 acres of Pinnacles National is designated as the Hain Wilderness (see [Hain Wilderness map](#)). The Wilderness Act of 1964 prohibits these uses in designated wilderness. Allowing such use would place the park in violation of the Wilderness Act. Administrative use of such devices is allowed only if determined by minimum requirements analysis to be necessary and appropriate under a specific set of circumstances.

- **Unmanned Aerial Systems**

Launching, landing, or operating an unmanned aircraft from or on lands and waters administered by the National Park Service within the boundaries of Pinnacles National Park is prohibited except as approved in writing by the superintendent.

- Definition: The term “unmanned aircraft” means a device that is used or intended to be used for flight in the air without the possibility of direct human intervention from within or on the device and the associated operational elements and components that are required for the pilot or system operator in command to operate or control the device that meet this definition (e.g., model airplanes, quadcopters, drones) that are used for any purpose, including recreation or commerce.

Determining Factors: This restriction is to protect the public from hazards and preserve the park's natural, aesthetic, and scenic values. The use of unmanned aircraft devices, such as Unmanned Aircraft Systems, (UAS) or drones, has the potential to interfere with public safety by posing an in-flight hazard to other legal aircraft use in the park. The use of these devices also has the potential to disrupt wildlife by interrupting migration, nesting, mating, and hunting activities to include, but not limited to protected species such as the California Condor, Peregrine Falcon, Golden and Bald Eagles, as well as other native birds and mammals. This restriction is in accordance with NPS Management Policy 8.2

which prohibits recreational uses that conflict with the scenic, natural, and historic values the park was designated to protect, and the associated activities in which individuals seek solitude and tranquility with an expectation of privacy. Some 80% of Pinnacles National Park is designated Wilderness. Launching and landing of UAS's in the park can invite violations to the Wilderness Act, which prohibits the operation of motorized vehicles or mechanized transport.

- **All-Terrain Vehicles (ATVs) or Off-Highway Vehicles (OHVs)**

The operation of off-road motor vehicles, also known as All-Terrain Vehicles (ATV's) or Off-Highway Vehicles (OHVs), is prohibited within Pinnacles National Park, including on or along paved roadways. This prohibition also applies to vehicles that meet the definition of off-road motor vehicles that are licensed for on-road or highway use by a state government. "Off-road motor vehicle" is defined by [Executive Order Number 11644](#) (37 Federal Register 2887.)

Off-road motor vehicles may be allowed for administrative purposes, such as fire control, search and rescue law enforcement, resource management activities, and maintenance when approved by the Superintendent.

Determining Factors: The Superintendent has determined that the use of off-road motor vehicles within the park is inconsistent with the mission of the park and other visitor pursuits and is further prohibited to protect the fragile resources of the park and ensure visitor safety.

- **Oversize Vehicles and Trailers**

Vehicles over 25 ft. in length and vehicles towing trailers are restricted beyond the Pinnacles Campground intersection on the East Entrance Road from the Campground to Bear Gulch and Old Pinnacles Trailhead without authorization of the Superintendent or her/his designee.

Determining Factors: Parking is limited beyond the campground for large vehicles and trailers and turn around areas are not adequate for such vehicles. Oversize vehicles and trailers may be parked in overflow parking areas behind the Campground Store. Visitors with such vehicles are encouraged to use the park shuttle when it is operating to reach destinations further in the park.

(a)(2) The following areas have been designated for a specific use or activity, under the conditions and/or restrictions as noted:

- **Technical Rock Climbing**

Technical rock climbing is allowed anywhere other than as provided below and with the following restrictions:

- Stretching climbing ropes across Park hiking trails to the point of restricting hiker access is prohibited (not to include climbing access trails).
- The use of powered devices to drill or fashion rock to facilitate climbing is prohibited.
- Travel to and from designated climbing areas is limited to designated trails marked by a sign with the symbol of a carabineer.
- There is a maximum group size of 12 people each at UpperCrust, LowerCrust, Toprope Wall, and Tourist Trap.
- Slacklining or highlining is not allowed at any location within the park.

Determining Factors: Climbing gear and ropes create a tripping hazard and block trails used by other visitors. There have been significant impacts to UpperCrust, LowerCrust, Toprope Wall, and Tourist Trap due to heavy use. Group size limits have proven to be an effective mitigation to resource damage. Slacklining or highlining can cause resource damage at anchor points and can create hazards in and block areas used by other visitors.

- **Parking**

Parking is allowed in the park only in marked parking spaces within designated parking lots.

Parking spaces may be permanently marked with paint or temporarily marked with chalk or another non-permanent marking system.

- Parking is not allowed along park roadsides starting at the East Entrance Station on the East Entrance Road, along the Chaparral Road on the west side of the park, along the Chalone Creek Road, or in the Bear Gulch area except where marked.
- Attempting to reserve or hold unoccupied parking spaces for others by placing items or people in them is prohibited. All parking spaces are first come, first served in all public parking areas of the park.
- The designated spaces for electric vehicle charging in the front parking lot of the campground store may only be occupied by electric vehicles actively making use of the chargers.

Time Limits for Parking

- A maximum of 20 minutes is permitted for parking in the following locations:
 - In designated areas along the East Entrance Road from the park entrance at Highway 25 to the East Entrance Station for the purpose of visiting the park entrance sign, using provided restroom facilities, or preparing for departure from the park. All vehicles parked in this area must be closely attended at all times.
 - The front paved parking lot of the Campground / Park Store
 - The parking spaces immediately adjacent to the restroom facilities in Loop C of the campground.
 - The pullout immediately adjacent to the park entrance sign along Chaparral Road on the west side of the park.

Determining Factors: Limited parking exists in the park to meet visitor needs. Restricting parking to marked spaces in designated lots allows for better traffic management of the park and safe, efficient traffic flow. If you are visiting Pinnacles on a nice day be prepared for heavy traffic, busy parking lots, and pedestrians on the roadway. Parking outside of marked spaces, designated lots and along roadsides results in resource damage and increases fire risk during dry conditions. Please drive courteously and help improve traffic flow.

- **Accessible Trails**

Trails within the park designated as accessible trails are open to mobility assistance devices used by persons with disabilities. These trails are also open to strollers or other child transport devices such as small, hand-pulled wagons.

- Prewett Point Trail on the West side of the park
- Bench Trail from the Campground to Peaks View Picnic Area on the East side of the park.
- Bacon/Butterfield Ranch Road from the north end of the Pinnacles Campground to the gate at Highway 25 (under development)

- **Filming, still photography, and audio recording**

Filming, still photography, and audio recording activity may require a permit, consistent with 54 U.S.C. 100905.

- Filming, still photography, and audio recording activity that occurs in closed areas, requires exclusive use of a site or area, or involves a set or staging equipment other than handheld equipment (such as a tripod, monopod, and handheld lighting equipment) requires a permit, unless the activity is affiliated with an activity or event that has been allowed under a written authorization, such as a special use permit.
- Filming, still photography, and audio recording that involves more than eight individuals requires a permit, unless the NPS has specifically notified an individual or group that a permit is not required, or if the activity is affiliated with an activity or

event that has been allowed under a written authorization, such as a special use permit.

- If a permit is required for the reasons stated above, or if the NPS otherwise determines and then notifies an individual or group that a permit is required for a filming, still photography, or audio recording activity, then engaging in that activity without a permit is prohibited. Violating a term or condition of a permit issued by the NPS for a filming, still photography, or audio recording activity is prohibited, and may result in the suspension or revocation of the permit, in addition to any penalties that may apply under 36 CFR 1.3.

***Determining Factors:** Federal law at 54 U.S.C. 100905 states that permits and fees are not required for filming, still photography, or audio recording in park areas if certain requirements are met. These requirements address various topics, including, but not limited to, group size, location, equipment, potential impacts to resources and visitors, and the likelihood that the NPS will incur related administrative costs. If any of these requirements are not met, the law allows the Secretary of the Interior, acting through the NPS, to require a permit for the subject activity. Permit requirements are imposed by the superintendent under discretionary authority provided by 36 CFR 1.5(a)(2), which allows the superintendent to impose conditions or restrictions on a use or activity, consistent with applicable legislation, to implement management responsibilities. The general regulations for permits in 36 CFR 1.6 do not apply to permits issued for filming, still photography, and audio recording, which instead are governed by the statutory provisions in 54 U.S.C. 100905. The imposition of permit requirements, on a case-by-case basis, for filming, still photography, or audio recording does not require rulemaking under 36 CFR 1.5(b). Requiring a permit with reasonable terms and conditions in accordance with statutory requirements at 54 U.S.C. 100905 is not highly controversial, will not result in a significant alteration in the public use pattern of the System unit, will not adversely affect the System unit's natural, aesthetic, scenic or cultural values, or require a long-term or significant modification in the resource management objectives of the System unit, because the permit requirement is limited in time and scope to the specific activities authorized by the permit, which contain terms and conditions that protect the values, resources, and visitors of the System unit, and implements federal law.*

36 CFR §1.6 – ACTIVITIES THAT REQUIRE A PERMIT

(f) The following is a compilation of those activities for which a permit from the superintendent is required:

- §1.5(d) The following activities related to Public Use Limits:
 - Cutting, collecting, and transporting firewood from designated wood lots when an excess of downed wood is declared by the Superintendent.
- § 2.4(e) Carrying or possessing a weapon, trap, or net not otherwise authorized under the following circumstances:
 - (1) When necessary to support research activities conducted in accordance with § 2.5.
 - (2) To carry firearms for persons in charge of pack trains or saddle horses for emergency use.
 - (3) For employees, agents or cooperating officials in the performance of their official duties.
 - (4) To provide access to otherwise inaccessible lands or waters contiguous to a park area when other means of access are otherwise impracticable or impossible.
- §2.5(a) Specimen collection (Take plant, fish, wildlife, rocks, or minerals).
- §2.10(a) The following camping activities:
 - Unless permitted by the Superintendent, all areas of Pinnacles National Park are closed to overnight parking and camping.
 - Camping is prohibited in all parking areas, roadside pullouts, picnic areas, trailheads or any other area not designated as a campsite.

- The purchasing of a campsite within Pinnacles Campground is considered a permit to camp, but only within the site purchased.
- §2.12 Audio Disturbances:
 - (a)(2) Operating a chain saw in developed areas.
 - (a)(3) Operation of any type of portable motor or engine, or device powered by a portable motor or engine in non-developed areas.
 - (a)(4) Operation of a public address system in connection with a public gathering or special event for which a permit has been issued pursuant to §2.50 or §2.51.
- §2.17 Aircraft & Air Delivery:
 - (a)(3) Delivery of a person or object by parachute, helicopter or other airborne means.
 - (c)(1) Removal of a downed aircraft.
- §2.23(b) The following special recreation activities (per 36 CFR Part 71):
 - 36 CFR, Part 71, §71.13(d) Organized tours or outings conducted for educational or scientific purposes, pursuant to a permit or “fee-waiver” issued by the superintendent.
- §2.37 Soliciting or demanding gifts, money, goods, or services
 - Pursuant to the terms and conditions of a permit issued under §2.50, §2.51, §2.52.
- §2.38 Explosives:
 - (a) Use, possession, storage, or transport of explosives, or blasting agents.
 - (b) Use or possession of fireworks or firecrackers.
- §2.50(a) Conduct a sports event, pageant, public spectator attraction, entertainment, ceremony, and similar events.
- §2.51(a)* Permitted public assemblies, meetings, gatherings, sale, demonstrations, parades and other public expressions of views.
- §2.52(a)* Sale or distribution of printed matter that is not solely commercial advertising.
 - Groups of 25 or less meeting all the conditions listed in the Interim rule to 36 CFR 2.52 published in the Federal Register / Vol. 75, No. 201 on Tuesday, October 19, 2010 are not required to have a permit for activities listed in §2.51(a) and §2.52(a)
- §2.0(b) Livestock use.
- §2.61(a) Residing on federal lands.
- §2.62 Memorialization:
 - (a) Erection of monuments (Requires approval from Regional Director).
 - (b) Scattering ashes from human cremation.
- §4.11(a) Exceeding established vehicle load, weight, and size limits.
- §5.1 Advertisements – Display, posting, or distribution.
- §5.3 Engaging in or soliciting any business
 - Requires a permit, contract or other written agreement with the United States or must be pursuant to special regulations.
- §5.5 Commercial Photography/Filming

- Some filming, still photography, and audio recording (depends upon the facts and circumstances; contact the park for more information). 36 CFR 1.5(a)(2) and 54 U.S.C. 100905.
- §5.6(c) Use of commercial vehicles on park area roads
 - The Superintendent shall issue a permit to access private lands within or adjacent to the park when access is otherwise not available.
- §5.7 Construction of buildings, facilities, trails, roads, paths, structures, etc.
- §5.10(a) Operation of eating, drinking, or lodging establishments on private lands
- §6.9(a) Operation of a solid waste disposal site

For permit information, please contact the park at (831) 389-4486 or visit the park website at: <https://www.nps.gov/pinn/planyourvisit/permitsandreservations.htm>

36 CFR §2.1 – PRESERVATION OF NATURAL, CULTURAL AND ARCHEOLOGICAL RESOURCES

(a)(4) Using or possessing wood gathered from within the Park is prohibited, except that dead wood on the ground may be collected for use as fuel for campfires within the park in the following areas:

- No areas are currently designated for wood gathering.
- The Superintendent may authorize gathering and burning of wood in campfires, for fuels reduction and wildland fire safety.

(c)(1), (c)(2) The following fruits, nuts, berries, or unoccupied seashells may be gathered by hand for personal use or consumption, in accordance with the noted size, quantity, collection sites and/or possession and consumption restrictions:

- The collection of fruit, nuts, berries, and the fruiting bodies of fungi from any edible species for personal consumption while in the park is permitted.

Determining Factors: Park biologists have determined that the gathering or consumption offruits, nuts, berries, or the fruiting bodies of fungi (mushrooms) will not adversely affect park wildlife, the reproductive potential of any plant species, or otherwise adversely affect park resources.

36 CFR §2.2 - WILDLIFE PROTECTION

(e) The following areas are closed to the viewing of wildlife with the use of an artificial light:

- All areas of the Park are closed to viewing of wildlife with an artificial light without a permit. This includes the use of infrared lighting/beams.

Determining Factors: Prevent impact to wildlife in its natural settings. Night vision devices are not artificial lights; however, infrared lighting/beams are considered artificial lights and are included in the prohibition.

36 CFR §2.3 - FISHING

- All park waters are closed to fishing.

Determining Factors: There are no fish in Bear Gulch Reservoir. The only native fish species currently found anywhere in Pinnacles National Park is the Three-spine Stickleback, which reaches a length of 2-3 inches and is not a sport fish.

36 CFR §2.4 – WEAPONS, TRAPS AND NETS

(d) A permit is required to possess a weapon, trap, or net with the exception of firearms allowed under Section 512 of Public Law 111-24. The Superintendent will only issue a permit under the following conditions:

- When necessary to support approved/permitted research activities.
- For employees, law enforcement officers, agents, or cooperating officials for official duty.

(h) In accordance with Section 512 of Public Law 111-24, persons possessing firearms within Pinnacles National Park must comply with the firearms laws of the State of California and any applicable Federal Law. Within the park, the following buildings are designated as “federal facilities” and shall be signed to indicate that firearms are prohibited inside these buildings in accordance with [18 USC 930](#):

- Bear Gulch Administrative Area: Nature Center, Interpretation Office, Conference Room, Superintendent’s Office, Administrative Building, Ranger Office, Condor Program Office, Resource Management Office, Museum.
- Chalone Maintenance Area: Trails Shop, SAR Cache, PSAR Office, Carpenter Shop, Maintenance Break Room, Maintenance Office and Warehouse, Resource Management Office, all other maintenance and work buildings.
- Campground Store, Park Store
- East Entrance Station booth and support building
- Bacon and Butterfield Ranch structures
- Bear Valley School
- West Side of Park: West Entrance Booth, West Visitor and Contact Station and Offices, West Maintenance / Ranger offices and Shops.
- All park water, sewage treatment and air quality monitoring facilities.
- Fire lookout.
- Any other building so identified by a sign on the entrance notifying that firearms are not allowed inside in accordance with 18 USC 930.

***Determining Factors:** Federal facilities are buildings or parts thereof owned or leased by the Federal Government, where Federal employees are regularly present for the purpose of performing official duties. 18 USC 930 is Federal law that supersedes Section 512 of Public Law 111-24 and prohibits the possession of a firearm or other dangerous weapon in a Federal facility unless specifically authorized. All concession facilities within the park are owned by the National Park Service and various park employees routinely perform work functions within those facilities.*

36 CFR §2.5 – RESEARCH SPECIMENS

Taking plants, fish, wildlife, rocks, or minerals is prohibited except in accordance with other regulations in Chapter I of 36 CFR or pursuant to the terms and conditions of a specimen collection permit.

For further information on Scientific Research and Collection Permits and Procedures for applying visit the following website: <https://irma.nps.gov/rprs/Home> or contact the park’s Natural Resource Manager at 831-389-4486.

36 CFR §2.10 – CAMPING and FOOD STORAGE

(a) The sites and areas listed below have been designated for camping activities as noted. A permit system has been established for certain campgrounds or camping activities, and conditions for camping and camping activities are in effect as noted:

- Pinnacles Campground is the only authorized camping area in the Park. Camping is only permitted in designated sites in the campground with a paid reservation.

- Camping is allowed for not more than a total of 30 days in any calendar year provided that during the period from February 1 through June 1, inclusive, camping is limited to not more than a total of 14 days.
- The 30 days can be waived for employees in active employment status. This waiver must be obtained by a written request to the Chief Ranger and a signature of the Superintendent.
- When a person pays a camping fee, occupies a campsite, or registers in a campground, the conditions established in this section of the compendium are in effect as the conditions of a camping permit. Under 2.10(b), violating these conditions is prohibited, and under 2.10(c), the permit may be suspended or revoked for violating these terms.

[Note: Camping is defined in 36 CFR 1.4)

- Check out time in the campground is 11:00 AM on the day of departure.
- In addition to the above limits, the following restrictions also apply:
 1. For Individual sites, occupancy is limited to six people, three tents and two vehicles (or four motorcycles).
 - Any means of conveyance that would require a license plate if registered in California is counted as a vehicle.
 - Extra vehicles MUST be left in the overflow parking lot east of the camp store.
 2. For Group sites, occupancy is limited to twenty people and five vehicles (or ten motorcycles).
 - Any means of conveyance that would require a license plate if registered in California is counted as a vehicle.
 - Extra vehicles MUST be left in the overflow parking lot east of the camp store.
 - Group sites are tent camping only. Camping / sleeping in vehicles is prohibited. No camping trailers, RVs, or motor homes are allowed in group sites or their associated parking areas. Any self-contained vehicle designed for sleeping is considered an RV/Motor home.
 3. Where parking pads are provided, vehicles must be parked with all wheels on the pad and may not extend into the traffic lane or into the campsite.
 4. No items may be tied or attached to trees or brush in the campsites, such as hammocks, clotheslines, lanterns, strings of lights, tent lines, etc.
 5. Attempting to reserve or hold unoccupied campsites for others by placing items or vehicles on them is prohibited. All pre-arrival reservations must be made by the parties that will be occupying the site via Recreation.gov. All sites must be paid for immediately upon occupancy.
 6. Generator use is prohibited in the park.
 7. Food, garbage, and equipment used to cook, or store food must not be left unattended and must be kept sealed in a vehicle, in a container that is constructed of solid, non-pliable material, or the provided food storage lockers. These storage conditions are in effect in all parts of the park. This restriction does not apply to food that is being transported, consumed, or prepared for consumption.

8. Campsite lighting must be respectful to others and consistent with the “Dark Skies” program. Any party lights, disco lights, Christmas lights, travel trailer parking lights, any decorative lighting must be turned off starting at 10:00pm and ending at 6:00am.

Determining Factors: The Superintendent has determined that these prohibitions and restrictions are necessary for public safety and resource protection. Generators are prohibited as the campground has sites with electrical service available.

36 CFR §2.11 – PICNICKING

Conditions for Picnicking:

- Picnic table availability is first-come, first-served and may not be set aside for later use, or “reserved” in any manner.
- Conditions for the storage of food, as noted in section 2.10a, are in effect in all picnic areas.

Determining Factors: The Superintendent has determined that these prohibitions and restrictions are necessary for public safety and resource protection.

36 CFR 2.13 – FIRES

(a)(1) The lighting or maintaining of fires is prohibited, except as provided for in the following designated areas and/or receptacles, and under the conditions noted:

Designated Areas:

- Moses Springs, Bear Gulch, Peaks View, Pinnacles Campground day use, and Chaparral picnic areas: in designated grills
- Pinnacles Campground: in designated fire pits.
- Employee residential housing areas: in designated grills, fire pits or in receptacles such as portable outdoor pits that fully contain the fire and are located within the yard immediately surrounding the residence.

Receptacles Allowed:

- Government-provided grills and fire pits.
- Visitor-provided gas stoves, hibachis, or portable barbecues.

Established Conditions for Fires:

- During periods of very high or extreme fire danger, and throughout the fire season, the Superintendent may designate limitations or prohibition of charcoal and/or wood fires, propane fire pits, any device which emits open flames, or require the use of gas stoves only.
- Hot contents of fire pits (charcoal, wood, etc.) must not be disposed of in trash receptacles or on the ground.
- All day use Picnic areas: Wood fires are prohibited. Visitors may use charcoal in the provided grills or their own hibachis or barbecues. Gas or tablet camp stoves are permitted.
- Fires will be constantly monitored while burning and completely extinguished after use.
- Fires must be fully contained within established fire grills, grates, or rings. No bonfires (large fires that spill outside the fire receptacle, use stacks of highly flammable material such as cardboard boxes or wood pallets or have excessive flame heights that could easily become uncontrolled) are allowed.
- No gathering of firewood is allowed anywhere in the park.

(b) Fires must be extinguished according to the following conditions:

- All fires must be completely extinguished with no burning material remaining. If a portable barbecue grill is used, all ashes/coals must be thoroughly extinguished and cooled.
- Fires will be considered out when all burnable materials are cool to the touch.

Determining Factors: Campfire use is a traditional activity in campgrounds and in picnic areas. However, the park is in a high fire danger zone and great caution must be taken to prevent ignition of a fire that could devastate the park and its resources.

36 CFR §2.14 – SANITATION and REFUSE

(a)(2) The use of government refuse receptacles or facilities for dumping household, commercial or industrial refuse, brought as such from private or municipal property is allowed under the following conditions:

- Household trash generated by authorized camping or picnicking activities may be placed in receptacles designed for that purpose in the developed campground and picnic areas. In all other instances, the dumping of commercial, household (generated by unauthorized camping), or industrial refuse, brought in from private or municipal property, in government receptacles is prohibited. Park residents in park housing or authorized contractors may dump household or commercial trash in receptacles approved by the superintendent.

(b) All persons must dispose of human waste by making use of toilet facilities where available. In backcountry areas lacking toilet facilities, human waste must be buried in a small hole dug in soil at least six inches deep and at least 100 feet from any trail, campsite, or water source. Visitors using disposable bio-bags must pack out the waste and dispose of it in designated trash receptacles. All trash must be carried out; burying or burning of toilet paper is prohibited.

Determining Factors: The Superintendent has determined that these prohibitions and restrictions are necessary for public safety and resource protection.

36 CFR §2.15 – PETS

(a)(1) The following structures and/or areas are closed to the possession of pets:

- All areas of the Park are closed to the possession of pets except developed picnic areas, within 10 feet of paved roads and parking areas, within the boundaries of the campground, and within 10 ft. of the dirt road from the campground through the Bacon Ranch historic area to the gate at Highway 25.
- Service or working law enforcement or search animals are exempt.
 - Emotional support animals are not service animals and are prohibited in all areas pets are prohibited.

(a)(3) Pets may be left unattended and tied to an object in the following areas, under the conditions noted:

- Pets must not be left unattended and tied to an object in the park. Please note exception listed in section 2.15(e).
- Pets must not be left or confined in violation of California Penal Code § 597.7 which reads “No person shall leave or confine an animal in any unattended motor vehicle under conditions that endanger the health or well-being of an animal due to heat, cold, lack of adequate ventilation, or lack of food or water, or other circumstances that could reasonably be expected to cause suffering, disability, or death to the animal.”

Note: When outside temperatures exceed 75 degrees Fahrenheit temperatures inside vehicles can often exceed 100 degrees, thereby endangering the health of pets left in a vehicle. Temperatures usually exceed 75 degrees from April through September and occasionally during the winter months.

(a)(5) Pet excrement must be disposed of in accordance with the following conditions:

- Pet excrement must be immediately collected and deposited in trash receptacles.

(e) Pets may be kept by park residents under the following conditions:

- Park residents may keep pets in accordance with the established Pet Policy, within the Housing Management Policy, for Pinnacles National Park.
- Pets may be tethered during daylight hours. They must have water provided to them. This is an exception to section 2.15(a)(3).

Determining Factors: Since pets are usually concentrated in the campground and public areas of Pinnacles National Park excrement must be removed to prevent health hazards to people and to lessen negative impacts on wildlife. Consistent with public health and safety, protection of natural resources and avoidance of conflict among visitor use activities, pets must be restricted. Pets are not considered compatible with the broad park goal of minimal resource impact. Pets can chase, scare, and transmit diseases to wild animals. They leave behind a predator scent typical of all wild canines like coyotes. This scent can linger in the area for long periods of time and can disrupt or alter the behavior of the native animals this park protects. Pets may also dig or trample fragile vegetation. Pets do not readily adapt to unknown surroundings, persons, or other animals. It is recognized that pets are a common possession of park visitors, and provisions are made for them where they do not jeopardize basic park values. Resident employees are subject to these regulations and may keep pets only in accordance with the park's pet policy.

36 CFR §2.16 – HORSES AND PACK ANIMALS

(a) The use of animals other than those designated as “pack animals” for purposes of transporting equipment is prohibited. The following animals are designated as pack animals for purposes of transporting equipment:

- No animals are so designated. The park is closed to stock use.

(b) The use of horses or pack animals is prohibited outside of the following trails, routes or areas designated for their use:

- All trails are closed to stock use except for park administrative use.

Determining Factors: It has been determined that using stock on the current trails at Pinnacles National Park creates conflict with other users as the trails are not designed to meet the demands of hikers and horse users safely, helps minimize the introduction of non-native invasive plants, and reduces trail degradation.

36 CFR §2.17 – AIRCRAFT and AIR DELIVERY

(c)(1) The removal of a downed aircraft, components, or parts thereof is subject to procedures established by the Superintendent through written authorization.

36 CFR §2.20 – SKATING, SKATEBOARDS and SIMILAR DEVICES

Using roller skates, skateboards, roller skis, coasting vehicles or similar devices is prohibited, except in designated areas.

- Such devices, including scooters, are permitted in the campground by registered campers and their guests.
- Such devices are permitted in the employee residential areas by residents and their guests.
- Only non-motorized devices of the types mentioned are permitted.

Determining Factors: The Superintendent has determined that these prohibitions and restrictions are necessary for public safety and resource protection.

36 CFR §2.21 – SMOKING

(a) The following portions of the park, or all or portions of buildings, structures or facilities are closed to smoking, to include electronic cigarettes and other electronic

nicotine delivery systems (ENDS), as noted:

- All park structures, caves, and fuel/hazardous materials storage areas.
- Within 20 feet from the main exits, entrances, or operable windows of any park structure.
- The superintendent may prohibit smoking along Park trails and other areas during periods of high or extreme fire danger and during the fire season.

Determining Factors: This prohibition is necessary to reduce the risk of fire in historic public use buildings, reduce the health hazards of secondhand smoke or other harmful substances to visitors, and prevent conflicts between smokers and nonsmokers. The above articulated restriction is consistent with current state law.

36 CFR §2.22 – PROPERTY

(a)(2) Property may be left unattended for periods longer than 24 hours in the following areas and under the following conditions:

- By prior written permission of Superintendent.

36 CFR §2.23 – RECREATION FEES

(b) Recreation fees, and/or a permit, in accordance with 36 CFR part 71, are established for the following entrance fee areas, and/or for the use of the following specialized sites, facilities, equipment or services, or for participation in the following group activity, recreation events or specialized recreation uses:

- Pinnacles National Park is an established fee area and is posted as such at the east and west entrances.
- Entrance fees for both sides of the park are as currently posted on the park website (<https://www.nps.gov/pinn/planyourvisit/fees.htm>).
- Campground fees are set by the Concession and approved by the Superintendent.

Employee vehicle entrance permits:

- A free entrance permit is required for all private vehicles operated by park employees, volunteers, and residents to enter the park.
- Vehicles must be registered and permits affixed to the vehicle within seven days of bringing a vehicle into the park.
- Permits can be obtained at the Park Fee Office.
- Vehicle owners must have valid registration and proof of insurance for vehicles operated within the park.
- Employee vehicle permits are valid only while the person is employed/lives within the park.
- Permits are vehicle-specific and non-transferable; a new permit is required for each vehicle registered.

36 CFR §2.35 – ALCOHOLIC BEVERAGES and CONTROLLED SUBSTANCES

(a)(3)(i) The following public use areas, portions of public use areas, and/or public facilities within the park are closed to consumption of alcoholic beverages, and/or to the possession of a bottle, can or other receptacle containing an alcoholic beverage that is open, or has been opened, or whose seal has been broken or the contents of which have been partially removed:

- Public use buildings to include visitor centers and park stores.
- All NPS administrative buildings and work areas.
- Campground amphitheater.

Determining Factors: The consumption of alcoholic beverages, or possession of open containers of alcoholic beverages, would be inappropriate and inconsistent with the intended uses of these areas.

NOTE: Possession of all controlled substances, including marijuana, is prohibited under Federal Law in all areas of the park.

36 CFR §2.37 – NONCOMMERCIAL SOLICITING

Soliciting or demanding gifts, money, goods, or services is prohibited except pursuant to the terms and conditions or a permit that has been issued under §2.50, §2.51, or §2.52.

36 CFR §2.38 – EXPLOSIVES

(b) Fireworks and firecrackers may be possessed and/or used in the following areas, under the conditions noted:

- All areas of Pinnacles National Park are closed to the use of fireworks and firecrackers.

Determining Factors: The Superintendent has determined that these prohibitions and restrictions are necessary for public safety and resource protection.

36 CFR §2.51 – DEMONSTRATIONS

(b) Permits and the small group permit exception.

- Groups of 25 or less meeting all the conditions listed in 36 CFR §2.51 are not required to have a permit.

(c)(2) The following locations are designated by the superintendent as available for demonstrations and associated activities within Pinnacles National Park:

- Bear Gulch administrative area next to the public restroom near the Condor Gulch trailhead.
- Chaparral parking area next to the public restroom.
- See appendix 2 for a map of the designated areas.

36 CFR §2.52 - SALE OR DISTRIBUTION OF PRINTED MATTER

(b) Permits and the small group permit exception.

- Groups of 25 or less meeting all the conditions listed in 36 CFR §2.52 are not required to have a permit.
- The following locations are designated by the superintendent as available for the sale or distribution of printed matter within Pinnacles National Park per §2.51(c)(2):
 - Bear Gulch administrative area next to the public restroom near the Condor Gulch trailhead.
 - Chaparral parking area next to the public restroom.
 - See appendix 2 for a map of the designated areas

36 CFR §2.60 – LIVESTOCK USE AND AGRICULTURE

(a) Livestock are generally prohibited in any park area. They are only permitted in park areas pursuant to the exceptions provided for in §2.60(a) and only pursuant to the terms and conditions of a license, permit, or lease.

36 CFR §2.61 – RESIDING ON FEDERAL LANDS

- (a) Residing in park areas, other than on privately owned lands, is prohibited except pursuant to the terms and conditions of a permit lease or contract.

36 CFR §2.62 – MEMORIALIZATION

(b) A permit is required for the scattering of ashes from cremated human remains, or in the following designated areas without a permit, in accordance with the following terms and conditions:

- A permit is required for scattering ashes in all areas of the park (see [Special](#) Use Permits on the park website).
- The remains to be scattered must have been cremated and pulverized.
- The scattering of remains by persons on the ground is to be performed at least 300' (100 yds) from any trail, road, developed area or flowing stream or other body of water.
- The scattering of remains from the air is to be performed at a minimum altitude of 3,000' above the ground.
- No scattering of remains from the air is to be performed over developed areas, facilities, raptor nesting areas, condor release sites, or bodies of water.
- Scattering on the ground must result in complete dispersal of ashes so that no obvious piles remain in any one place. No containers/urns are to be left behind or buried.

Determining Factors: The Superintendent has determined that these prohibitions and restrictions are necessary for public safety and resource protection.

36 CFR §3.8 – BOATING OPERATIONS

(a)(2) Launching or operating vessel is prohibited except at one of the following launch sites:

- There are no designated boat launch sites or designated areas for operating watercraft.

Determining Factors: Bear Gulch Reservoir and all bodies of water in the park are closed to boating or paddling. Boating may negatively affect species that inhabit or otherwise utilize aquatic areas.

36 CFR §3.21 – SWIMMING AND BATHING

(a)(1) The following areas are closed to swimming and bathing:

- Bear Gulch Reservoir.
- Any natural body of water.

Determining Factor: Swimming and bathing may negatively affect sensitive species habitat.

36 CFR §4.10 – TRAVEL ON PARK ROADS AND ROUTES

(a) Park roads, open for travel by motor vehicle are those indicated below, and/or as indicated in the following publication or document:

- Pinnacles Campground.
- East Entrance Road, including the Bear Gulch section.
- Peaks View Parking Area.
- Bear Gulch Parking Area.
- Chalone Creek road.
- Chaparral Road from the West Entrance to the Chaparral Parking Area.
- West Visitor Contact Station Parking Area.
- Jawbone Parking Area.
- Chaparral Parking Area.

36 CFR §4.21 – SPEED LIMITS

(b) The following speed limits are established for the routes/roads indicated:

- 5 mph Pinnacles Campground creek crossing.
- 10 mph Pinnacles Campground.
- 15 mph at all entrance stations.
- 15 mph from Bear Gulch to Moses Springs.
- 15 mph in all parking areas, residential/maintenance areas, and on administrative roads.
- 25 mph on Chalone Creek Road to Old Pinnacles Trailhead.
- 25 mph from Bear Gulch to Highway 25 on the East Entrance Road.
- 25 mph on the Chaparral Road on the West side of the park.

Determining Factors: The Superintendent has determined that these prohibitions and restrictions are necessary for public safety and resource protection.

36 CFR §4.30 – BICYCLES

Pursuant to the authority granted to superintendents under this section, the following areas are designated as being open or closed to bicycle use as follows:

(a) Park roads

- All park roads and parking areas open to motor vehicle use for the general public are open to bicycle use as well.

(b) Administrative Roads

- The unpaved dirt road within the ranchlands that extends from the campground through the Bacon Ranch historic area to the gate at Highway 25 is open to bicycle use.
 - Bicyclists may not exit or enter the park via the Bacon/Butterfield Road at Highway 25.
- All other administrative roads in the park are closed to bicycle use.

Determining Factors: The Butterfield/ Bacon Ranch Road was part of a historic ranch road and is still used for access to a private ranch inholding. Its use by bicyclists is consistent with the park's goals and objectives for visitor enjoyment and resource protection. Access into the park from or exiting the park onto Highway 25 is not safe. All other administrative roads in the park are unsuitable for bicycle use and not consistent with the park's goals and objectives for visitor enjoyment and resource protection.

(c) Existing trails

- All hiking trails in the park are closed to bicycle use

Determining Factors: Use of bicycles on park trails is not compatible with use by hikers. Park trails are narrow, steep, and rocky in many instances posing hazards to hikers from bicycles attempting to use the same trail and bicycles would contribute to negative resource impacts due to these same conditions.

(i) Electric Bicycles

- **(1)** Any areas of the park open to traditional bicycle use are open to use by electric bicycles as well. All other areas of the park are closed to electric bicycle use

Determining Factors: Electric bicycles are a relatively new technology that advance Healthy Parks - Healthy People goals to promote parks as a health resource by supporting a healthy park experience that is accessible, desirable, and relatable to people of all abilities, and by minimizing human impact through the expansion of active transportation options in parks. Specifically, electric bicycles can increase bicycle access to and within parks, expand the option of bicycling to more people, and mitigate environmental impacts through reduced carbon emissions. The superintendent has determined that expanding access of electric bicycles, per the definitions and restrictions above, to areas in the park where bicycles are already allowed does not pose additional safety or resource

protection concerns.

36 CFR § 4.31 HITCHHIKING

Hitchhiking or soliciting transportation shall be permitted within Pinnacles National Park except:

- Within two tenths of a mile (0.2mi) of an Entrance Station.
- Within 200 feet of a concession business or park service office building or visitor center.
- In a residential area where signs exist establishing the area as a residential area only and discouraging public traffic.
- While holding or having a sign which is larger than 1' by 2' in size
- The hitchhiker must stay off of the paved surface of the roadway, not obstruct traffic, and use trailheads, parking areas or turnouts.
- Where vehicles may not safely pull off of the main traffic lane into a pullout or safely onto the shoulder to allow for the passengers to be received safely.
- During the hours of darkness.
- While under the influence of alcohol or intoxicating drugs.
- When hitch hiking behavior is deemed unsafe or a nuisance by Park Staff.

***Determining Factors:** The superintendent has determined that hitchhiking will be allowed in the park so long as those individuals seeking a ride follow the above safety guidelines and do not obstruct traffic or harass other park visitors. Hitchhiking is allowed to provide a means for hikers to return to their vehicles or to/from trailheads, especially on the east side of the park during times when shuttle service is not available.*

36 CFR §5.1 – ADVERTISEMENTS

Commercial notices or advertisements shall not be displayed, posted, or distributed on federally owned or controlled lands within a park area unless prior written permission has been given by the Superintendent.

36 CFR §5.3 – BUSINESS OPERATIONS

Engaging in or soliciting any business in park areas, except in accordance with the provisions of a permit, contract, or other written agreement with the United States, except as such may be specifically authorized under special regulations applicable to a park area, is prohibited.

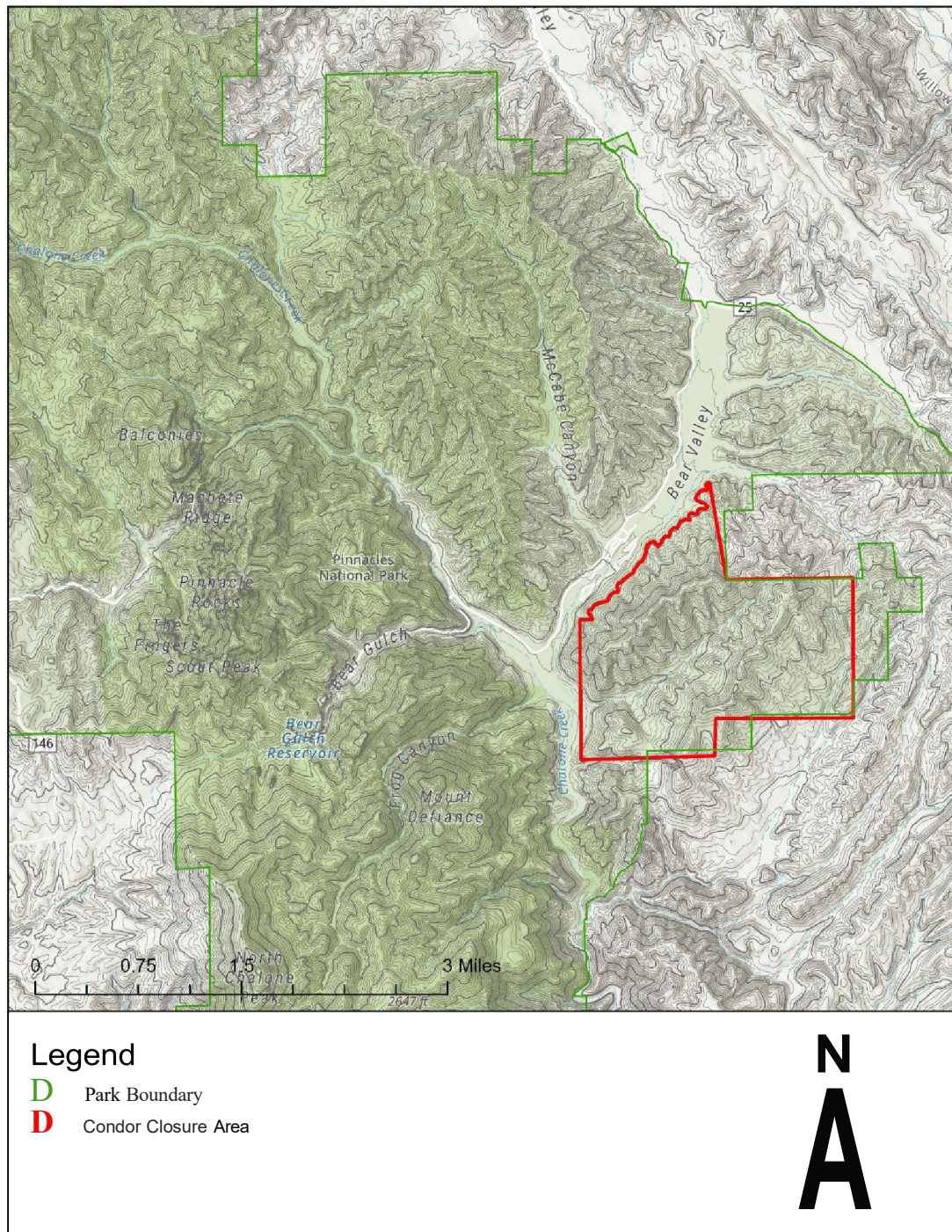
36 CFR §5.6 – COMMERCIAL VEHICLES

Under sections (b) and (c), using commercial vehicles on government roads within park areas when such use is in no way connected with the operation of the park is prohibited without permission or a permit from the Superintendent.

36 CFR §5.7 – CONSTRUCTION OF BUILDINGS OR OTHER FACILITIES

Such activities are prohibited, except in accordance with the provisions of a valid permit, contract, or other written agreement with the United States.

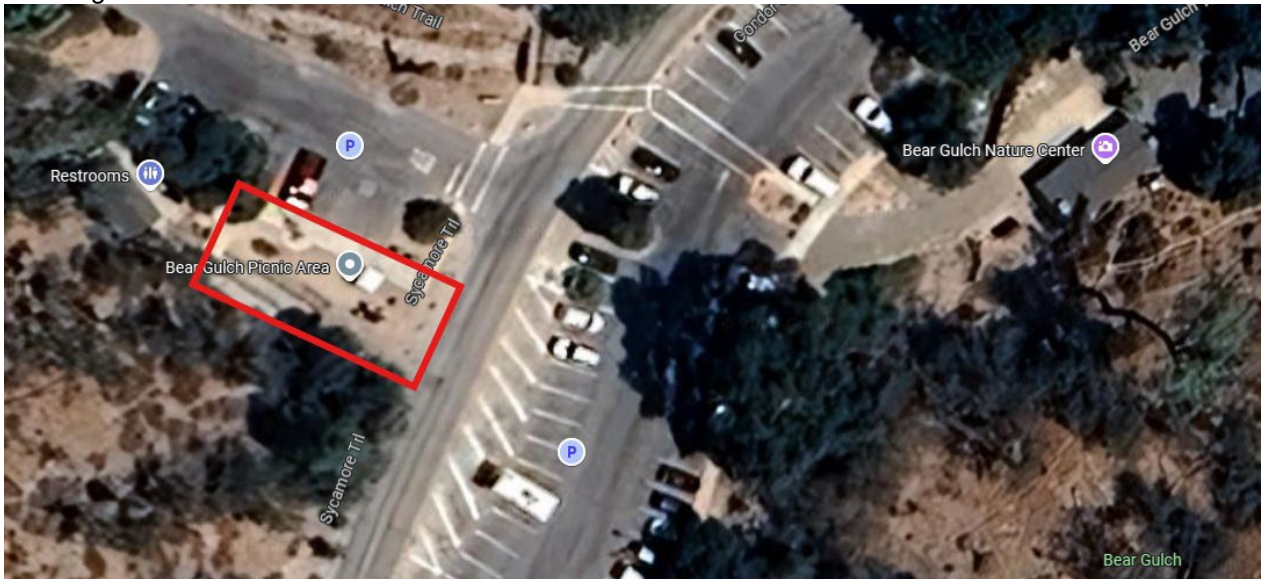
Administrative Closure for Condor Management, Pinnacles NP



Designated First Amendment Areas- Pinnacles National Park

East Side

Bear Gulch- east of restroom facility to Bear Gulch Road between edge of Condor Gulch Parking Lot and retaining wall



West Side

Chapparal Picnic Area- South of restroom to edge of Chapparal Parking Lot, between picnic area path and brush line to the east.



Pinnacles National Park Closed Circuit Television Policy Statement

In accordance with National Park Service Law Enforcement Reference Manual 9 (RM-9), notice is hereby given that Pinnacles National Park uses Closed Circuit Television (CCTV) security camera monitoring.

The park's use of Closed-Circuit Television (CCTV) for law enforcement and security purposes will only be to visually monitor public park areas and public activities where no constitutionally protected reasonable expectation of privacy exists. Such CCTV use – which will have adequate privacy and First Amendment safeguards – will be to help ensure public safety and security; facilitate the detection, investigation, prevention, and deterrence of terrorist attack and crime; help ensure the safety of citizens and officers; help assist in the proper allocation and deployment of law enforcement and public safety resources; and help facilitate the protection of the innocent and the apprehension and prosecution of criminals. (RM-9, 26.1)

This policy does not restrict the official use of CCTV in government administrative areas, including administrative buildings, jail holding facilities (RM-9, 26.3.7), revenue collection sites, etc., where the government may record/monitor its facilities. For example, the government may perform unrestricted video/audio recording at revenue collection points (entrance stations, visitor center counters, etc.). This policy does not restrict the use of an Audio/Visual Recording Device (AVRD) in patrol vehicles or officer-worn recording devices used by commissioned rangers. (RM-9, 26.1).

Operation of CCTV cameras, maintenance of recorded images and use of recorded images will be in accordance with NPS and Department policy and applicable laws and regulations. (RM-9, 26.1-26.4) No person will be targeted or monitored merely because of race, religion, gender, sex, disability, national origin, or political affiliation or views. (RM-9, 26.4.2)

Nothing in this policy statement is intended to create any rights, privileges, or benefits not otherwise recognized by law.