



National Park Service
U.S. Department of the Interior

Pinnacles National Park

5000 Highway 146
Paicines, CA 95043

2024 Superintendent's Compendium
Of Designations, Closures, Permit Requirements
and Other Restrictions Imposed Under
Discretionary Authority.

831-389-4486 phone
831-389-4489 fax

Approved:

Blanca Alvarez-Stransky, Superintendent

Date

In accordance with regulations and the delegated authority provided in Title 36, Code of Federal Regulations ("36 CFR"), Chapter 1, Parts 1-7, authorized by Title 54 United States Code, Section 100751, the following provisions apply to all lands and waters administered by the National Park Service, within the boundaries of Pinnacles National Park. Unless otherwise stated, these regulatory provisions apply in addition to the requirements contained in 36 CFR, Chapter 1, Parts 1-7.

Written determinations, which explain the reasoning behind the Superintendent's use of discretionary authority, as required by Section 1.5(c), appear in this document identified by italicized print.

36 CFR §1.5 – VISITING HOURS, PUBLIC USE LIMITS, CLOSURES, AND AREA DESIGNATIONS FOR SPECIFIC USE OR ACTIVITIES

(a)(1) The following visiting hours and public use limits are established for the listed portions of the park, and the following closures are established for all or a portion of the park to all public use or to a certain use or activity:

Hours of Operation:

- Pinnacles Nature Center (East Side) is open daily from 10:00 am to 3:00 pm.
- West Pinnacles Visitor Contact Station is open daily from 10:00 am to 3:00 pm.
- Inbound access to the West side of the park is open daily from 7:30 am to 8:00 pm.

Public Use Limits:

Inbound access to the West side of the park is open approximately during daylight hours. During the summer months (daylight savings time) the hours are 7:30 am to 8:00 pm. During winter months (standard time) the hours are 7:30am until dusk.

Determining Factors: The automatic gate at the western boundary allows access to the park during daytime hours but does not allow access after dark. As there are no overnight accommodations on the west side of the park, the west entrance is restricted to day-time entry. Those visitors in the park after dark can activate the gate to leave, but the gate will not open to those outside the park.

Closures:

- **Buildings and Facilities**

- The following National Park Service buildings and facilities are closed to the public without permission of the Superintendent or his/her designee:
 - All park residential areas
 - All park administrative offices, ranger stations, shops, and other work areas.
 - National Park Service maintenance yards and associated buildings.
 - Water treatment facilities
 - Sewage treatment facilities
 - Park weather stations
 - Fire lookout
 - Unpaved roads within the Pinnacles Ranch area are restricted to specific administrative use, use by bicycles (see 4.30 below), or as an easement/access for the local landowner.
 - Unpaved South Wilderness road, from East Entrance road to the old shooting range and beyond to include Grassy Canyon Road (administrative use only).
 - Unpaved road from "Double Gates" (located on the West Entrance road, 1.0 mile from the West Entrance) to the west boundary (administrative use, and by permit as an easement/access for local landowners).
 - North Chalone Peak road (administrative use only).
 - Condor Gulch service road (administrative use only).
 - All water tank service roads (administrative use only).
 - Any other service and administrative roads, so designated by signs and/or locked gates, or barricaded with logs and/or boulders.

Determining Factors: Residences are rented and occupied by National Park Service employees. Allowing visitor entry or use to these buildings would significantly disturb the privacy and disrupt the residential life of the occupants. The other buildings, facilities and locations are administrative sites used by the National Park Service in the management and administration of the park. Visitor entry or use of these sites without permission would interfere with the protection of government property, create potentially hazardous conditions for visitors, and interfere with park operations. Because these sites may be located in remote areas and/or staffed intermittently, it is not practical to expect park staff to provide for security and safety, and less restrictive measures will not suffice.

- **Bear Gulch Cave Closures**

All or portions of the Bear Gulch Cave system will be closed according to the following schedule:

July 15 through May 15:	Upper 1/3 of the cave closed
May 15 through July 15:	Entire cave closed
0-4 weeks mid spring (March):	Entire cave may be open
0-4 weeks mid fall (October):	Entire cave may be open
High water events	Entire cave closed

This schedule is subject to modification based upon monitoring the bat colony by Pinnacles National Park resource management staff. The opening is based on bat populations and the closing is set on the last day of the month in March and October.

Determining Factors: Caves are closed or restricted in access during the listed times to provide protection for a nesting colony of Townsend's Big-Eared Bat, in the Bear Gulch Caves. The schedule is subject to modification based on monitoring of the bat colony by Pinnacles National Park resource management staff.

- **Balconies Caves**

Entry during high water events is prohibited. Balconies Cave gates may be closed during periods of heavy rain or high water as a safety precaution.

Determining Factor: High water events pose extreme hazards to visitors in the caves

- **Off Trail Hiking and Rock Climbing:**

Off trail hiking and rock climbing may be restricted in areas so designated for protection of park resources. These areas will be posted with signs and printed material will be made available to visitors at the entrance station, visitor centers and website (www.nps.gov/PINN).

Determining Factor: These restrictions are imposed when it has been determined by the park's resource management staff that there is a need to protect raptors or other wildlife during critical periods of time in specific areas.

- **Stock Use**

All trails are closed to stock use except for park administrative use.

Determining Factors: It has been determined that using stock on the current trails at Pinnacles National Park creates conflict with other users as the trails are not designed to meet the demands of hikers and horse users safely, helps minimize the introduction of non-native invasive plants, and reduces trail degradation.

- **Condor Release Site**

The following areas are closed to prevent unnecessary human interactions with the endangered California condor. The size of the area, about a one-half mile radius around the site, provides a visual and aural buffer from human disturbance for the animals.

The following areas, based on the Mount Diablo Meridian, San Benito County, and within the boundaries of Pinnacles National Park, CA, are closed to public access, use of fire, and smoking:

- 1) Township 17 South, Range 8 East, Section 5, approx. 651 acres.
- 2) Township 17 South, Range 8 East, Southern 3/4 of Section 6, approx. 480 acres.
- 3) Township 17 South, Range 8 East, Northern 1/4 of Section 7, approx. 160 acres.
- 4) Township 17 South, Range 8 East, Northern 1/4 of Section 6, lands 1200 feet above sea level altitude and southeast of Highway 146, approximately 140 acres.
- 5) Township 16 South, Range 8 East, Southern 3/4 of Section 31, lands 1200 feet above sea level altitude and southeast of Highway 146, approximately 150 acres.

These areas are discernable on the USGS 7.5-minute topographic maps North Chalone Peak, CA and Topo Valley, CALIF. See Appendix 1 for a map of these areas.

- **Raptor and Condor Advisories and Closures**

To maximize the potential of successful nest establishment Pinnacles National Park has, since 1988, advised that all visitors refrain from rock climbing and off-trail hiking in sensitive areas during the raptor nesting season. These same areas are also often used by the critically endangered California Condor for which additional advisories and closures may be placed into effect.

These protective measures often go into effect early in the year and may remain until June, July or later as necessary to protect the birds. However, as nesting activity is monitored by Park staff, additional sensitive areas may be identified and listed as closed or some areas

may be opened. Please check with a ranger, check the park website, check the Climber Information Bulletin Boards, or visit the [Friends of Pinnacles](#) and [Mud N' Crud](#) websites for more information on advisories and closures as you plan your climbing and hiking trips.

These advisories do not affect hiking along the Park's primary trail system. All designated trails will remain fully accessible by park visitors. Climbers should continue to use designated and open "Climber Access Routes" in all areas of the Park.

Determining Factors: Over 20 species of raptors have been documented at the park, with 10 species nesting on a yearly basis, including the highest density of nesting prairie falcons in the country. The geography of the park provides raptors with ideal nesting sites, both on the inaccessible cliffs and rock formations used by prairie falcons, golden eagles, red-tailed hawks, and American kestrels, and on the oaks and pines along the riparian corridors used by Cooper's hawks, sharp-shinned hawks, and red-shouldered hawks. Endangered California Condors also utilize many of these same features for nesting and roosting sites. Limiting human activities in these areas maximizes the potential of successful nest establishment for raptors and condors. Intentionally disturbing wildlife nesting, breeding, and other activities is a violation of Title 36 of the Code of Federal Regulations (Section 2.2 (a) (2)). Intentionally disturbing California Condor nesting, breeding, and other activities can be a violation of the Endangered Species Act (16 U.S.C. §1531 et seq).

- **Wilderness**

National Park wilderness, including trails, is closed to the possession or use of any machine, conveyance, device, or vehicle activated and propelled by a motor, engine, or other non-living power source. The use or possession of these, and all other forms of mechanical transport in wilderness, are prohibited. This includes, but is not limited to, cars, trucks, all-terrain vehicles (ATV), motorcycles, aircraft, snow machines, motorboats, chain saws, weed whackers, power drills, power saws, generators, compressors, windmills or turbines, and snow or leaf blowers.

National Park wilderness, including trails, is closed to the possession or use of any contrivance for moving people or material in or over land, water, snow, or air that has moving parts, that provides a mechanical advantage to the user, and is powered by a living or non-living power source. This restriction is for the preservation of wilderness character. This includes, but is not limited to, non-motorized wheeled vehicles, conveyances, and devices, such as bicycles, Segway™ and other Electric Personal Assistance Mobility Devices (EPAMD), carts, game carriers, canoe dollies, wheelbarrows, wagons, strollers, ski kites, sailboats/boards, hang gliders and paragliders. Wheelchairs as defined in Title V Section 507(c) of the Americans with Disabilities Act (ADA) may be used by persons with disabilities.

Determining Factor: At total of 15,985 acres of Pinnacles National is designated as the Hain Wilderness (see [Hain Wilderness map](#)). The Wilderness Act of 1964 prohibits these uses in designated wilderness. Allowing such use would place the park in violation of the Wilderness Act. Administrative use of such devices is allowed only if determined by minimum requirements analysis to be necessary and appropriate under a specific set of circumstances.

- **Unmanned Aerial Systems**

Launching, landing, or operating an unmanned aircraft from or on lands and waters administered by the National Park Service within the boundaries of Pinnacles National Park is prohibited except as approved in writing by the superintendent.

- Definition: The term "unmanned aircraft" means a device that is used or intended to be used for flight in the air without the possibility of direct human intervention from within or on the device and the associated operational elements and components

that are required for the pilot or system operator in command to operate or control the device that meet this definition (e.g., model airplanes, quadcopters, drones) that are used for any purpose, including recreation or commerce.

***Determining Factors:** This restriction is to protect the public from hazards and preserve the park's natural, aesthetic, and scenic values. The use of unmanned aircraft devices, such as Unmanned Aircraft Systems, (UAS) or drones, has the potential to interfere with public safety by posing an in-flight hazard to other legal aircraft use in the park. The use of these devices also has the potential to disrupt wildlife by interrupting migration, nesting, mating, and hunting activities to include, but not limited to protected species such as the California Condor, Peregrine Falcon, Golden and Bald Eagles, as well as other native birds and mammals. This restriction is in accordance with NPS Management Policy 8.2 which prohibits recreational uses that conflict with the scenic, natural, and historic values the park was designated to protect, and the associated activities in which individuals seek solitude and tranquility with an expectation of privacy. Some 80% of Pinnacles National Park is designated Wilderness. Launching and landing of UAS's in the park can invite violations to the Wilderness Act, which prohibits the operation of motorized vehicles or mechanized transport.*

- **All-Terrain Vehicles (ATVs) or Off-Highway Vehicles (OHVs)**

The operation of off-road motor vehicles, also known as All-Terrain Vehicles (ATV's) or Off-Highway Vehicles (OHVs), is prohibited within Pinnacles National Park, including on or along paved roadways. This prohibition also applies to vehicles that meet the definition of off-road motor vehicles that are licensed for on-road or highway use by a state government. "Off-road motor vehicle" is defined by [Executive Order Number 11644](#) (37 Federal Register 2887.) Off-road motor vehicles may be allowed for administrative purposes, such as fire control, search and rescue law enforcement, resource management activities, and maintenance when approved by the Superintendent.

***Determining Factors:** The Superintendent has determined that the use of off-road motor vehicles within the park is inconsistent with the mission of the park and other visitor pursuits and is further prohibited to protect the fragile resources of the park and ensure visitor safety.*

- **Oversize Vehicles and Trailers**

Vehicles over 25 ft. in length and trailers are restricted beyond the Pinnacles Campground intersection on the East Entrance Road from the Campground to Bear Gulch and Old Pinnacles Trailhead without authorization of the Superintendent or her/his designee.

***Determining Factors:** Parking is limited beyond the campground for large vehicles and trailers and turn around areas are not adequate for such vehicles. Oversize vehicles and trailers may be parked in overflow parking areas behind the Campground Store. Visitors with such vehicles are encouraged to use the park shuttle when it is operating to reach destinations further in the park.*

(a)(2) The following areas have been designated for a specific use or activity, under the conditions and/or restrictions as noted:

- **Technical Rock Climbing**

Technical rock climbing is allowed anywhere other than as provided below and with the following restrictions:

- Stretching climbing ropes across Park hiking trails to the point of restricting hiker access is prohibited (not to include climbing access trails).
- The use of powered devices to drill or fashion rock to facilitate climbing is prohibited.

- Travel to and from designated climbing areas is limited to designated trails marked by a sign with the symbol of a carabineer.
- There is a maximum group size of 12 people each at Uppercrust, Lowercrust, Toprope Wall, and Tourist Trap.
- Slacklining or highlining is not allowed at any location within the park.

***Determining Factors:** Climbing gear and ropes create a tripping hazard and block trails used by other visitors. There have been significant impacts to Uppercrust, Lowercrust, Toprope Wall, and Tourist Trap due to heavy use. Group size limits have proven to be an effective mitigation to resource damage. Slacklining or highlining can cause resource damage at anchor points and can create hazards in and block areas used by other visitors.*

- **Parking**

Parking is allowed in the park only in marked parking spaces within designated parking lots. Parking spaces may be permanently marked with paint or temporarily marked with chalk or another non-permanent marking system.

- Parking is not allowed along park roadsides starting ¼ mile west of Highway 25 on the East Entrance Road, along the Chaparral Road on the west side of the park, along the Chalone Creek Road, or in the Bear Gulch area except where marked.

***Determining Factors:** Limited parking exists in the park to meet visitor needs. Restricting parking to marked spaces in designated lots allows for better traffic management of the park and safe, efficient traffic flow. If you are visiting Pinnacles on a nice day be prepared for heavy traffic, busy parking lots, and pedestrians on the roadway. Parking outside of marked spaces, designated lots and along roadsides results in resource damage and increases fire risk during dry conditions. Please drive courteously and help improve traffic flow.*

- **Accessible Trails**

Trails within the park designated as accessible trails are open to mobility assistance devices used by persons with disabilities. These trails are also open to strollers or other child transport devices such as small, hand-pulled wagons.

- Prewett Point Trail on the West side of the park
- Bench Trail from the Campground to Peaks View Picnic Area on the East side of the park.

- **Face Masks/Coverings:**

When the COVID-19 Community Level is LOW or MEDIUM in the county or all the counties where the park is located based on data provided by the Centers for Disease Control and Prevention (CDC), individuals are not required to wear masks.

When the COVID-19 Community Level is HIGH in the county or all the counties where the park is located based on data provided by the CDC, all individuals over the age of two must wear masks, regardless of vaccination status, in all common areas and shared workspaces in buildings owned, leased, or otherwise controlled by the National Park Service, including, but not limited to, park visitor centers, administrative offices, lodges, gift shops and restaurants.

When the COVID-19 Community Level is HIGH in one or more, but not all, of the counties where the park is located based on data provided by the CDC, the superintendent will determine whether individuals are required to wear masks. The requirement, if any, will apply to all facilities within the park.

Masks must cover the nose and mouth and fit snugly around the nose and chin with no large gaps around the sides of the face. Masks not designed to be protective, masks with ventilation valves, and face shields do not meet the requirement.

Regardless of the COVID-19 Community Level, individuals may wear masks if they choose to do so. Where a state, local, tribal, or territorial government where the park is located imposes more protective mask-wearing requirements than those indicated by the COVID-19 Community Level, individuals must follow those more protective requirements within the park. More protective state, local, tribal, or territorial mask-wearing requirements are hereby adopted as federal requirements in all units of the National Park System located within that state, locality, area subject to a federally recognized Indian tribe's regulatory jurisdiction, or territory, regardless of a particular park's jurisdictional status.

Additionally, all individuals must wear masks in or on public transportation conveyances and transportation hubs/facilities, to the extent required by current orders or directives issued by the CDC, the Transportation Security Administration (TSA), or other federal agencies with jurisdiction over those conveyances or areas. As of March 4, 2022, CDC and TSA orders or directives require all individuals regardless of vaccination status to wear masks in indoor areas of all forms of public transportation conveyances, including busses, trains, and boats/ferries, and in the indoor premises of transportation hubs/facilities. Individuals are not required to wear masks while outdoors on conveyances or while outdoors on the premises of transportation hubs/facilities.

Regardless of vaccination status, all individuals must comply with all orders regarding masks issued by the Centers for Disease Control and Prevention (CDC).

CDC prevention measures continue to apply to all travelers on public transit, regardless of vaccination status. Masks remain required on all forms of public transit that operate within parks, including busses, trains, and boats/ferries, and in transportation hubs.

This restriction will be modified or lifted once the federal face covering mandate is relaxed or rescinded.

Determining Factors: *The CDC has issued [detailed considerations for wearing masks](#).*

Some of these considerations are summarized below.

- *In addition to physical distancing and hand washing, masks are a critical step to help prevent people from getting and spreading COVID-19. When you wear a mask, you protect others as well as yourself.*
- *COVID-19 spreads mainly from person to person through respiratory droplets. Masks are a simple barrier to help prevent respiratory droplets from reaching others.*
- *Masks can prevent the spread of the disease even when the wearer is not sick. This is because several studies have found that people with COVID-19 who never develop symptoms (asymptomatic) and those who are not yet showing symptoms (pre-symptomatic) can still spread the virus to other people.*
- *Masks may not be necessary when you are outside by yourself away from others, or with other people who live in your household.*
- *It is especially important to wear a mask indoors with people you do not live with and when you are unable to stay at least 6 feet apart because COVID-19 spreads mainly among people who are in close contact with one another.*

36 CFR §1.6 – ACTIVITIES THAT REQUIRE A PERMIT

(f) The following is a compilation of those activities for which a permit from the superintendent is required:

- §1.5(d) The following activities related to Public Use Limits:
Cutting, collecting, and transporting firewood from designated wood lots when an excess of downed wood is declared by the Superintendent.
- § 2.4(d) Carrying or possessing a weapon, trap, or net.
- §2.5(a) Specimen collection (Take plant, fish, wildlife, rocks, or minerals).
- §2.10(a) The following camping activities:
 - Unless permitted by the Superintendent, all areas of Pinnacles National Park are closed to overnight parking and camping.
 - Camping is prohibited in all parking areas, roadside pullouts, picnic areas, trailheads or any other area not designated as a campsite.
 - The purchasing of a campsite within Pinnacles Campground is considered a permit to camp, but only within the site purchased.
- §2.12 Audio Disturbances:
 - (a)(2) Operating a chain saw in developed areas.
 - (a)(3) Operation of any type of portable motor or engine, or device powered by a portable motor or engine in non-developed areas.
 - (a)(4) Operation of a public address system in connection with a public gathering or special event for which a permit has been issued pursuant to §2.50 or §2.51.
- §2.17 Aircraft & Air Delivery:
 - (a)(3) Delivery of a person or object by parachute, helicopter or other airborne means.
 - (c)(1) Removal of a downed aircraft.
- §2.23(b) The following special recreation activities (per 36 CFR Part 71):
 - 36 CFR, Part 71, §71.13(d) Organized tours or outings conducted for educational or scientific purposes, pursuant to a permit or “fee-waiver” issued by the superintendent.
- §2.37 Soliciting or demanding gifts, money, goods, or services (Pursuant to the terms and conditions of a permit issued under §2.50, §2.51, §2.52).
- §2.38 Explosives:
 - (a) Use, possession, storage, or transport of explosives, or blasting agents.
 - (b) Use or possession of fireworks or firecrackers.
- §2.50(a) Conduct a sports event pageant, public spectator attraction, entertainment, ceremony, and similar events.
- §2.51(a)* Permitted public assemblies, meetings, gatherings, sale, demonstrations, parades and other public expressions of views.
- §2.52(a)* Sale or distribution of printed matter that is not solely commercial advertising.

* Groups of 25 or less meeting all the conditions listed in the Interim rule to 36 CFR

2.52 published in the Federal Register / Vol. 75, No. 201 on Tuesday, October 19, 2010 are not required to have a permit for activities listed in §2.51(a) and §2.52(a)

- §2.60(b) Livestock use.
- §2.61(a) Residing on federal lands.
- §2.62 Memorialization:
 - (a) Erection of monuments (Requires approval from Regional Director).
 - (b) Scattering ashes from human cremation.
- §4.11(a) Exceeding established vehicle load, weight, and size limits.
- §5.1 Advertisements – (Display, posting, or distribution).
- §5.3 Engaging in or soliciting any business (Requires a permit, contract or other written agreement with the United States or must be pursuant to special regulations).
- §5.5 Commercial Photography/Filming:
 - (a) Commercial filming of motion pictures or television involving the use of professional casts, settings, or crews, other than bona fide newsreel or news television.
 - (b) Still photography of vehicles, or other articles of commerce or models for the purpose of commercial advertising.
- §5.6(c) Use of commercial vehicles on park area roads (The Superintendent shall issue a permit to access private lands within or adjacent to the park when access is otherwise not available).
- §5.7 Construction of buildings, facilities, trails, roads, paths, structures, etc.
- §5.10(a) Operation of eating, drinking, or lodging establishments on private lands
- §6.9(a) Operation of a solid waste disposal site

For permit information, please contact the park at (831) 389-4486 or visit the park website at: <https://www.nps.gov/pinn/planyourvisit/permitsandreservations.htm>

36 CFR §2.1 – PRESERVATION OF NATURAL, CULTURAL AND ARCHEOLOGICAL RESOURCES

(a)(4) Using or possessing wood gathered from within the Park is prohibited, except that dead wood on the ground may be collected for use as fuel for campfires within the park in the following areas:

- No areas are currently designated for wood gathering.
- The Superintendent may authorize gathering and burning of wood in campfires, for fuels reduction and wildland fire safety.

(c)(1), (c)(2) The following fruits, nuts, berries, or unoccupied seashells may be gathered by hand for personal use or consumption, in accordance with the noted size, quantity, collection sites and/or possession and consumption restrictions:

- The collection of fruit, nuts, berries, and the fruiting bodies of fungi from any edible species for personal consumption while in the park is permitted.

Determining Factors: Park biologists have determined that the gathering or consumption of fruits, nuts, berries, or the fruiting bodies of fungi (mushrooms) will not adversely affect park wildlife, the reproductive potential of any plant species, or otherwise adversely affect park resources.

36 CFR §2.2 - WILDLIFE PROTECTION

(e) The following areas are closed to the viewing of wildlife with the use of an artificial light:

- All areas of the Park are closed to viewing of wildlife with an artificial light without a permit. This includes the use of infrared lighting/beams.

36 CFR §2.3 – FISHING

All park waters are closed to fishing.

Determining Factors: There are no fish in Bear Gulch Reservoir. The only native fish species currently found anywhere in Pinnacles National Park is the Three-spine Stickleback, which reaches a length of 2-3 inches and is not a sport fish.

36 CFR §2.4 – WEAPONS, TRAPS AND NETS

(d) A permit is required to possess a weapon, trap, or net with the exception of firearms allowed under Section 512 of Public Law 111-24. The Superintendent will only issue a permit under the following conditions:

- When necessary to support approved/permitted research activities.
- For employees, law enforcement officers, agents, or cooperating officials for official duty.

(h) In accordance with Section 512 of Public Law 111-24, persons possessing firearms within Pinnacles National Park must comply with the firearms laws of the State of California and any applicable Federal Law. Within the park, the following buildings are designated as “federal facilities” and shall be signed to indicate that firearms are prohibited inside these buildings in accordance with [18 USC 930](#):

- Bear Gulch Administrative Area: Nature Center, Interpretation Office, Conference Room, Superintendent’s Office, Administrative Building, Ranger Office, Condor Program Office, Resource Management Office, Museum.
- Chalone Maintenance Area: Trails Shop, SAR Cache, PSAR Office, Carpenter Shop, Maintenance Break Room, Maintenance Office and Warehouse, all other maintenance and work buildings.
- Campground Store, Park Store
- East Entrance Station booth and support building
- Bacon and Butterfield Ranch structures
- Bear Valley School
- West Side of Park: West Entrance Booth, West Visitor and Contact Station and Offices, West
- All park water, sewage treatment and air quality monitoring facilities
- Fire lookout.
- Any other building so identified by a sign on the entrance notifying that firearms are not allowed inside in accordance with 18 USC 930.

Determining Factors: Federal facilities are buildings or parts thereof owned or leased by the Federal Government, where Federal employees are regularly present for the purpose of performing official duties. 18 USC 930 is Federal law that supersedes Section 512 of Public Law 111-24 and prohibits the possession of a firearm or other dangerous weapon in a Federal facility unless specifically authorized. All concession facilities within the park are owned by the National Park Service and various park employees routinely perform work functions within those facilities.

36 CFR §2.5 – RESEARCH SPECIMENS

Taking plants, fish, wildlife, rocks, or minerals is prohibited except in accordance with other regulations in Chapter I of 36 CFR or pursuant to the terms and conditions of a specimen collection permit.

For further information on Scientific Research and Collection Permits and Procedures for applying visit the following website: <https://irma.nps.gov/rprs/Home> or contact the park's Natural Resource Manager at 831-389-4486.

36 CFR §2.10 – CAMPING and FOOD STORAGE

(a) The sites and areas listed below have been designated for camping activities as noted. A permit system has been established for certain campgrounds or camping activities, and conditions for camping and camping activities are in effect as noted:

- Pinnacles Campground is the only authorized camping in the Park.
- Camping is allowed for not more than a total of 30 days in any calendar year provided that during the period from February 1 through June 1, inclusive, camping is limited to not more than a total of 14 days.
- The 30 days can be waived for employees in active employment status. This waiver must be obtained by a written request to the Chief Ranger and a signature of the Superintendent.
- When a person pays a camping fee, occupies a campsite, or registers in a campground, the conditions established in this section of the compendium are in effect as the conditions of a camping permit. Under 2.10(b), violating these conditions is prohibited, and under 2.10(c), the permit may be suspended or revoked for violating these terms.

[Note: Camping is defined in 36 CFR 1.4)

- Check out time in the campground is 11:00 AM on the day of departure.
- In addition to the above limits, the following restrictions also apply:
 1. For Individual sites, occupancy is limited to six people, three tents and two vehicles or one vehicle and one trailer or RV/Motor home. Any self-contained vehicle designed for sleeping is considered an RV/Motor home. Extra vehicles MUST be left in the overnight parking lot.
 2. For Group sites, occupancy is limited to twenty people and five vehicles. No trailers, RV's, or motor homes are allowed in group sites. Any self-contained vehicle designed for sleeping is considered an RV/Motor home.
 3. Where parking pads are provided, vehicles must be parked with all wheels on the pad and may not extend into the traffic lane or into the campsite.
 4. Reserving or holding campsites operating as first come first served is prohibited. Campsites must be paid for within 30 minutes of occupant's arrival.
 5. Generator use is prohibited in the park (due to the availability of electric hook ups in specified campsites).
 6. Food, garbage, and equipment used to cook, or store food must not be left

unattended and must be kept sealed in a vehicle, in a container that is constructed of solid, non-pliable material, or the provided food storage lockers. These storage conditions are in effect in all parts of the park. This restriction does not apply to food that is being transported, consumed, or prepared for consumption.

7. Campsite lighting must be respectful to others, any party lights, disco lights, Christmas lights, travel trailer parking lights, any decorative lighting must be turned off starting at 10:00pm and ending at 6:00am.

36 CFR §2.11 – PICNICKING

Conditions for Picnicking:

- Picnic table availability is first-come, first-served and may not be set aside for later use, or “reserved” in any manner.
- Conditions for the storage of food, as noted in section 2.10a, are in effect in all picnic areas.

36 CFR 2.13 – FIRES

(a)(1) The lighting or maintaining of fires is prohibited, except as provided for in the following designated areas and/or receptacles, and under the conditions noted:

Designated Areas:

- Moses Springs, Peaks View, and Chaparral picnic areas in designated grills
- Employee residential housing areas in designated grills, fire pits or in receptacles such as portable outdoor pits that fully contain the fire and are located within the yard immediately surrounding the residence.
- Pinnacles Campground in designated fire pits.

Receptacles Allowed:

- Government-provided grills and fire pits.
- Visitor-provided gas stoves, hibachis, or portable barbecues.

Established Conditions for Fires:

- During periods of very high or extreme fire danger, and throughout the fire season, the Superintendent may designate limitations or prohibition of charcoal and/or wood fires, propane fire pits, or require the use of gas stoves only.
- Hot contents of fire pits (charcoal, wood, etc.) must not be disposed of in trash receptacles or on the ground.
- Peaks View Picnic area: fires in visitor-provided gas stoves, charcoal hibachis, or charcoal barbecues only. No wood fires.
- Fires will be constantly monitored while burning and completely extinguished after use.
- Fires must be fully contained within established fire grills, grates, or rings. No bonfires (large fires that spill outside the fire receptacle, use stacks of highly flammable material such as cardboard boxes or wood pallets or have excessive flame heights that could easily become uncontrolled) are allowed.
- No gathering of firewood is allowed.
- Prevent the spread of tree-killing pests by obtaining firewood at or near your destination and burning it on-site or buy certified heat-treated firewood. Visit dontmovefirewood.org to learn more.

(b) Fires must be extinguished according to the following conditions:

- All fires must be completely extinguished with no burning material remaining. If a portable barbecue grill is used, all ashes/coals must be thoroughly extinguished and cooled.
- Fires will be considered out when all burnable materials are cool to the touch.

Determining Factors: Campfire use is a traditional activity in campgrounds and in picnic areas. Western forests are in jeopardy from the transportation of invasive insects, such as the Emerald

Ash borer, and diseases in firewood. New infestations of tree-killing insects and diseases often are first found in campgrounds and parks. Wood that looks clean and healthy can still have tiny insect eggs, or microscopic fungi spores, that will start a new and deadly infestation. To make sure invasive insects are not spread on firewood, use firewood from local sources within 50 miles of where wood is planned to be burned or certified heat-treated firewood.

36 CFR §2.14 – SANITATION and REFUSE

(a)(2) The use of government refuse receptacles or facilities for dumping household, commercial or industrial refuse, brought as such from private or municipal property is allowed under the following conditions:

- Household trash generated by authorized camping or picnicking activities may be placed in receptacles designed for that purpose in the developed campground and picnic areas. In all other instances, the dumping of commercial, household (generated by unauthorized camping), or industrial refuse, brought in from private or municipal property, in government receptacles is prohibited. Park residents in park housing or authorized contractors may dump household or commercial trash in receptacles approved by the superintendent.

(b) All person must dispose of human waste by making use of toilet facilities where available. In backcountry areas lacking toilet facilities, human waste must be buried in a small hole dug in soil at least six inches deep and at least 200 feet from any trail, campsite, or water source. All trash must be carried out; burying or burning of toilet paper is prohibited.

36 CFR §2.15 – PETS

(a)(1) The following structures and/or areas are closed to the possession of pets:

- All areas of the Park are closed to the possession of pets except developed picnic areas, within 10 feet of paved roads and parking areas, within the boundaries of the campground, within 10 ft. of the dirt road from the campground through the Bacon Ranch historic area to the gate ½ mile to the south, and within 25 ft. of the structures at the Bacon Ranch historic area. Service or working law enforcement or search animals are exempt.

(a)(3) Pets may be left unattended and tied to an object in the following areas, under the conditions noted:

- Pets must not be left unattended and tied to an object in the park. Please note exception listed in section 2.15(e).
- Pets must not be left or confined in violation of California Penal Code § 597.7 which reads “No person shall leave or confine an animal in any unattended motor vehicle under conditions that endanger the health or well-being of an animal due to heat, cold, lack of adequate ventilation, or lack of food or water, or other circumstances that could reasonably be expected to cause suffering, disability, or death to the animal.”

Note: When outside temperatures exceed 75 degrees Fahrenheit temperatures inside vehicles can often exceed 100 degrees, thereby endangering the health of pets left in a vehicle. Temperatures usually exceed 75 degrees from April through September and occasionally during the winter months.

(a)(5) Pet excrement must be disposed of in accordance with the following conditions:

- Pet excrement must be collected and deposited in trash receptacles.

(e) Pets may be kept by park residents under the following conditions:

- Park residents may keep pets in accordance with the established Pet Policy, within the

Housing Management Policy, for Pinnacles National Park.

- Pets may be tethered during daylight hours. They must have water provided to them. This is an exception to section 2.15(a)(3).

Determining Factors: Since pets are usually concentrated in the campground and public areas of Pinnacles National Park excrement must be removed to prevent health hazards to people and to lessen negative impacts on wildlife. Consistent with public health and safety, protection of natural resources and avoidance of conflict among visitor use activities, pets must be restricted. Pets are not considered compatible with the broad park goal of minimal resource impact. Pets can chase, scare, and transmit diseases to wild animals. They leave behind a predator scent typical of all wild canines like coyotes. This scent can linger in the area for long periods of time and can disrupt or alter the behavior of the native animals this park protects. Pets may also dig or trample fragile vegetation. Pets do not readily adapt to unknown surroundings, persons, or other animals. It is recognized that pets are a common possession of park visitors, and provisions are made for them where they do not jeopardize basic park values. Resident employees are subject to these regulations and may keep pets only in accordance with the park's pet policy.

36 CFR §2.16 – HORSES AND PACK ANIMALS

(a) The use of animals other than those designated as “pack animals” for purposes of transporting equipment is prohibited. The following animals are designated as pack animals for purposes of transporting equipment:

- No animals are so designated. The park is closed to stock use.

(b) The use of horses or pack animals is prohibited outside of the following trails, routes or areas designated for their use:

All trails are closed to stock use except for park administrative use.

Determining Factors: It has been determined that using stock on the current trails at Pinnacles National Park creates conflict with other users as the trails are not designed to meet the demands of hikers and horse users safely, helps minimize the introduction of non-native invasive plants, and reduces trail degradation.

36 CFR §2.17 – AIRCRAFT and AIR DELIVERY

(c)(1) The removal of a downed aircraft, components, or parts thereof is subject to procedures established by the Superintendent through written authorization.

36 CFR §2.20 – SKATING, SKATEBOARDS and SIMILAR DEVICES

Using roller skates, skateboards, roller skis, coasting vehicles or similar devices is prohibited, except in designated areas.

- Such devices, including scooters, are permitted in the campground by registered campers and their guests.
- Residents and their guests are permitted use in the employee residential areas.
- Only non-motorized devices of the types mentioned are permitted.

36 CFR §2.21 – SMOKING

(a) The following portions of the park, or all or portions of buildings, structures or facilities are closed to smoking, to include electronic cigarettes and other electronic nicotine delivery systems (ENDS), as noted:

- All park structures, caves, and fuel/hazardous materials storage areas.
- Within 20 feet from the main exits, entrances, or operable windows of any park structure.

- The superintendent may prohibit smoking along Park trails and other areas during periods of high or extreme fire danger and during the fire season.

Determining Factors: This prohibition is necessary to reduce the risk of fire in historic public use buildings, reduce the health hazards of secondhand smoke or other harmful substances to visitors, and prevent conflicts between smokers and nonsmokers. The above articulated restriction is consistent with current state law. 36 CFR §2.22 – PROPERTY

(a)(2) Property may be left unattended for periods longer than 24 hours in the following areas and under the following conditions:

- By written permission of Superintendent.

36 CFR §2.23 – RECREATION FEES

(b) Recreation fees, and/or a permit, in accordance with 36 CFR part 71, are established for the following entrance fee areas, and/or for the use of the following specialized sites, facilities, equipment or services, or for participation in the following group activity, recreation events or specialized recreation uses:

- Pinnacles National Park is an established fee area and is posted as such at the east and west entrances.
- Entrance fees for both sides of the park are as currently posted on the park website (<https://www.nps.gov/pinn/planyourvisit/fees.htm>).
- Campground fees are set by the Concession and approved by the Superintendent.

Employee vehicle entrance permits:

- A free entrance permit is required for all private vehicles operated by park employees, volunteers, and residents to enter the park.
- Vehicles must be registered and permits affixed to the vehicle within seven days of bringing a vehicle into the park.
- Permits can be obtained at the Park Fee Office.
- Vehicle owners must have valid registration and proof of insurance for vehicles operated within the park.
- Employee vehicle permits are valid only while the person is employed/lives within the park.
- Permits are vehicle-specific and non-transferable; a new permit is required for each vehicle registered.

36 CFR §2.35 – ALCOHOLIC BEVERAGES and CONTROLLED SUBSTANCES

(a)(3)(i) The following public use areas, portions of public use areas, and/or public facilities within the park are closed to consumption of alcoholic beverages, and/or to the possession of a bottle, can or other receptacle containing an alcoholic beverage that is open, or has been opened, or whose seal has been broken or the contents of which have been partially removed:

- Public use buildings to include visitor centers and park stores.
- All NPS administrative buildings and work areas.
- Campground amphitheater.

Determining Factors: The consumption of alcoholic beverages, or possession of open containers of alcoholic beverages, would be inappropriate and inconsistent with the intended uses of these areas.

36 CFR §2.37 – NONCOMMERCIAL SOLICITING

Soliciting or demanding gifts, money, goods, or services is prohibited except pursuant to the terms and conditions of a permit that has been issued under §2.50, §2.51, or §2.52.

36 CFR §2.38 – EXPLOSIVES

(b) Fireworks and firecrackers may be possessed and/or used in the following areas, under the conditions noted:

- All areas of Pinnacles National Park are closed to the use of fireworks and firecrackers.

36 CFR §2.51 – DEMONSTRATIONS

(b) Permits and the small group permit exception.

- Groups of 25 or less meeting all the conditions listed in 36 CFR §2.51 are not required to have a permit.

(c)(2) The following locations are designated by the superintendent as available for demonstrations and associated activities within Pinnacles National Park:

- Bear Gulch administrative area next to the public restroom near the Condor Gulch trailhead.
- Chaparral parking area next to the public restroom.

36 CFR §2.52 - SALE OR DISTRIBUTION OF PRINTED MATTER

(b) Permits and the small group permit exception.

- Groups of 25 or less meeting all the conditions listed in 36 CFR §2.52 are not required to have a permit.
- The following locations are designated by the superintendent as available for the sale or distribution of printed matter within Pinnacles National Park per §2.51(c)(2):
 - Bear Gulch administrative area next to the public restroom near the Condor Gulch trailhead.
 - Chaparral parking area next to the public restroom.

36 CFR §2.60 – LIVESTOCK USE AND AGRICULTURE

(a) Livestock are generally prohibited in any park area. They are only permitted in park areas pursuant to the exceptions provided for in §2.60(a) and only pursuant to the terms and conditions of a license, permit, or lease.

36 CFR §2.61 – RESIDING ON FEDERAL LANDS

(a) Residing in park areas, other than on privately owned lands, is prohibited except pursuant to the terms and conditions of a permit lease or contract.

36 CFR §2.62 – MEMORIALIZATION

(b) A permit is required for the scattering of ashes from cremated human remains, or in the following designated areas without a permit, in accordance with the following terms and conditions:

- A permit is required for scattering ashes in all areas of the park (see [Special](#) Use Permits on the park website).

- The remains to be scattered must have been cremated and pulverized.
- The scattering of remains by persons on the ground is to be performed at least 300' (100 yds) from any trail, road, developed area or flowing stream or other body of water.
- The scattering of remains from the air is to be performed at a minimum altitude of 3,000' above the ground.
- No scattering of remains from the air is to be performed over developed areas, facilities, raptor nesting areas, condor release sites, or bodies of water.
- Scattering on the ground must result in complete dispersal of ashes so that no obvious piles remain in any one place. No containers/urns are to be left behind or buried.

36 CFR §3.8 – BOATING OPERATIONS

(a)(2) Launching or operating vessel is prohibited except at one of the following launch sites:

- There are no designated boat launch sites or designated areas for operating watercraft.

Determining Factors: Bear Gulch Reservoir and all bodies of water in the park are closed to boating or paddling. Boating may negatively affect species that inhabit or otherwise utilize aquatic areas.

36 CFR §3.21 – SWIMMING AND BATHING

(a)(1) The following areas are closed to swimming and bathing:

- Bear Gulch Reservoir.
- Any natural body of water.

Determining Factor: Swimming and bathing may negatively affect sensitive species habitat.

36 CFR §4.10 – TRAVEL ON PARK ROADS AND ROUTES

(a) Park roads, open for travel by motor vehicle are those indicated below, and/or as indicated in the following publication or document:

- Pinnacles Campground.
- East Entrance road, including the Bear Gulch section.
- Chalone Creek road.
- Chaparral Road from the West Entrance to the Chaparral Parking Area.

36 CFR §4.21 – SPEED LIMITS

(b) The following speed limits are established for the routes/roads indicated:

- 5 mph Pinnacles Campground creek crossing.
- 10 mph Pinnacles Campground.
- 15 mph at all entrance stations.
- 15 mph from Bear Gulch to Moses Springs.
- 15 mph in all parking areas, residential/maintenance areas, and on administrative roads.
- 25 mph on Chalone Creek Road to Old Pinnacles Trailhead.
- 25 mph from Bear Gulch to Highway 25 on the East Entrance Road.
- 25 mph on the Chaparral Road on the West side of the park.

36 CFR §4.30 – BICYCLES

(a) Park roads and parking areas that are closed to bicycle use are as follows:

- All hiking trails in the park.
- All administrative roads.

Determining Factors: Use of bicycles on park trails is not compatible with use by hikers. Park trails are narrow, steep, and rocky in many instances posing hazards to hikers from bicycles attempting to use the same trail and bicycles would contribute to negative resource due to these same conditions.

The following additional routes, in developed areas or special use zones, have been designated for bicycle use:

- On the unpaved dirt road within the ranchlands that extends from the campground through the Bacon Ranch historic area to the gate ½ mile to the south.
 - Bicyclists must not enter the area where free-ranging stock is kept on the ranchlands beyond the closed stock gates. The road to the private inholding is closed to all visitor use.

Determining Factors: This route was part of a historic ranch road and is still used for access to a private ranch inholding. Its use by bicyclists is consistent with the park's goals and objectives for visitor enjoyment and resource protection.

E-Bikes:

- The term "e-bike" means a two- or three-wheeled cycle with fully operable pedals and an electric motor of less than 750 watts (1 h.p.).
- E-bikes are allowed in Pinnacles National Park where traditional bicycles are allowed; this includes the portion of unpaved road in the ranchlands per the authority of 36 CFR 4.30(i).
- E-bikes are prohibited where traditional bicycles are prohibited. Except where use of motor vehicles by the public is allowed, using the electric motor to move an e-bike without pedaling is prohibited (see also 36 CFR 4.30(i)).
- A person operating an e-bike is subject to the following sections of 36 CFR part 4 that apply to the use of traditional bicycles: sections 4.12, 4.13, 4.20, 4.21, 4.22, 4.23, and 4.30(h) (2)-(5).
- Except as specified in this Compendium and 36 CFR 4.30(i), the use of an e-bike within Pinnacles National Park is governed by California State law, which is adopted and made a part of this Compendium. Any violation of State law adopted by this paragraph is prohibited.

Determining Factors: E-bikes are a relatively new technology that advance Healthy Parks - Healthy People goals to promote parks as a health resource by supporting a healthy park experience that is accessible, desirable, and relatable to people of all abilities, and by minimizing human impact through the expansion of active transportation options in parks. Specifically, e-bikes can increase bicycle access to and within parks, expand the option of bicycling to more people, and mitigate environmental impacts through reduced carbon emissions. The superintendent has determined that expanding access of e-bikes, per the definitions and restrictions above, to areas in the park where bicycles are already allowed does not pose additional safety or resource protection concerns.

36 CFR § 4.31 HITCHHIKING

Hitchhiking or soliciting transportation shall be permitted within Pinnacles National Park except:

- Within two tenths of a mile (0.2mi) of an Entrance Station.
- Within 200 feet of a concession business or park service office building or visitor center.
- In a residential area where signs exist establishing the area as a residential area only and

discouraging public traffic.

- While holding or having a sign which is larger than 1' by 2' in size
- The hitchhiker must stay off of the paved surface of the roadway, not obstruct traffic, and use trailheads, parking areas or turnouts.
- Where vehicles may not safely pull off of the main traffic lane into a pullout or safely onto the shoulder to allow for the passengers to be received safely.
- During the hours of darkness.
- While under the influence of alcohol or intoxicating drugs.
- When hitch hiking behavior is deemed unsafe or a nuisance by Park Staff.

Determining Factors: The superintendent has determined that hitchhiking will be allowed in the park so long as those individuals seeking a ride follow the above safety guidelines and do not obstruct traffic or harass other park visitors. Hitchhiking is allowed to provide a means for hikers to return to their vehicles or to/from trailheads, especially on the east side of the park during times when shuttle service is not available.

36 CFR §5.1 – ADVERTISEMENTS

Commercial notices or advertisements shall not be displayed, posted, or distributed on federally owned or controlled lands within a park area unless prior written permission has been given by the Superintendent.

36 CFR §5.3 – BUSINESS OPERATIONS

Engaging in or soliciting any business in park areas, except in accordance with the provisions of a permit, contract, or other written agreement with the United States, except as such may be specifically authorized under special regulations applicable to a park area, is prohibited.

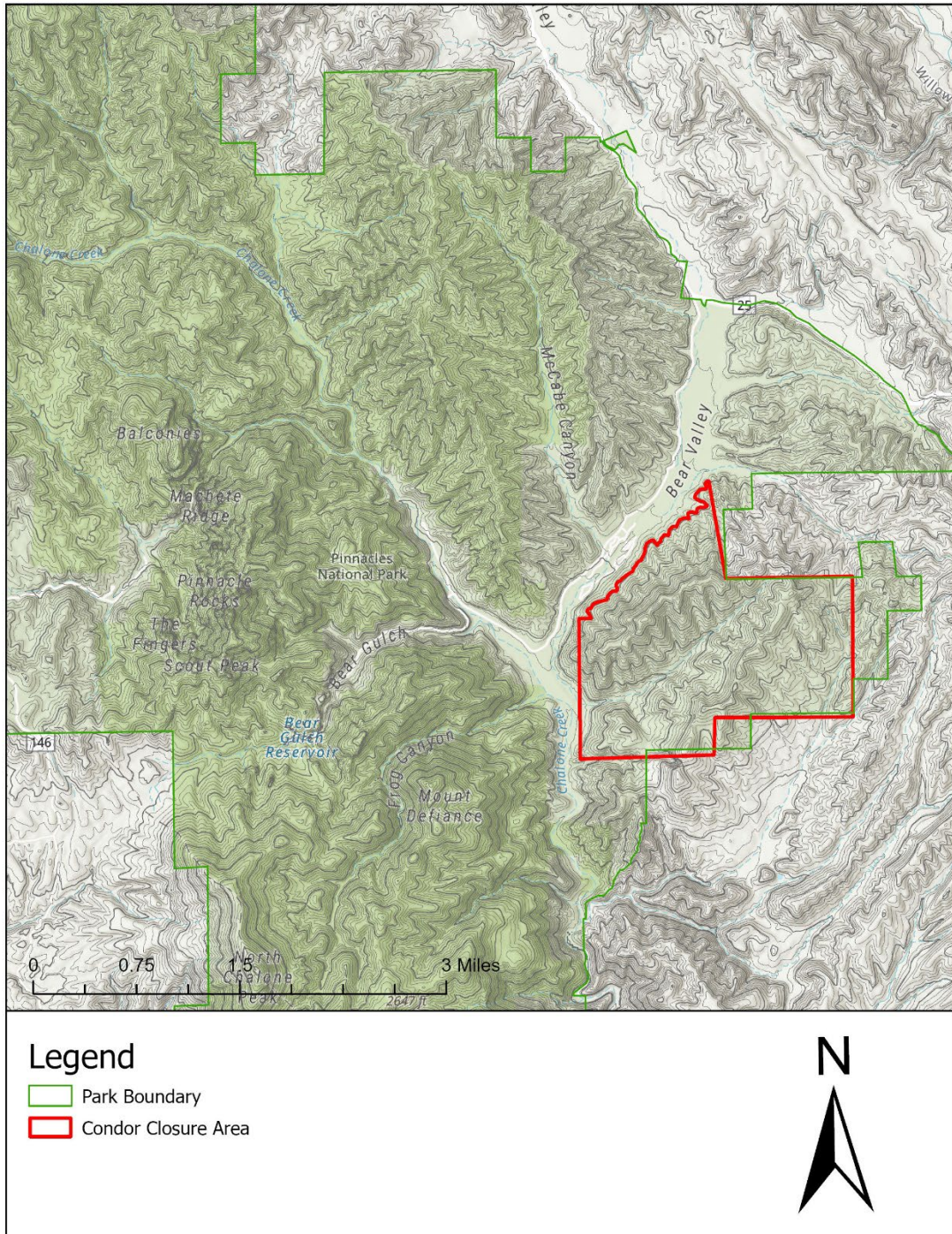
36 CFR §5.6 – COMMERCIAL VEHICLES

(b) & (c) Using commercial vehicles on government roads within park areas when such use is in no way connected with the operation of the park is prohibited without permission or a permit from the Superintendent.

36 CFR §5.7 – CONSTRUCTION OF BUILDINGS OR OTHER FACILITIES

Such activities are prohibited, except in accordance with the provisions of a valid permit, contract, or other written agreement with the United States.

Administrative Closure for Condor Management, Pinnacles NP



Pinnacles National Park Closed Circuit Television Policy Statement

In accordance with National Park Service Law Enforcement Reference Manual 9 (RM-9), notice is hereby given that Pinnacles National Park uses Closed Circuit Television (CCTV) security camera monitoring.

The park's use of Closed-Circuit Television (CCTV) for law enforcement and security purposes will only be to visually monitor public park areas and public activities where no constitutionally protected reasonable expectation of privacy exists. Such CCTV use – which will have adequate privacy and First Amendment safeguards – will be to help ensure public safety and security; facilitate the detection, investigation, prevention, and deterrence of terrorist attack and crime; help ensure the safety of citizens and officers; help assist in the proper allocation and deployment of law enforcement and public safety resources; and help facilitate the protection of the innocent and the apprehension and prosecution of criminals. (RM-9, 26.1)

This policy does not restrict the official use of CCTV in government administrative areas, including administrative buildings, jail holding facilities (RM-9, 26.3.7), revenue collection sites, etc., where the government may record/monitor its facilities. For example, the government may perform unrestricted video/audio recording at revenue collection points (entrance stations, visitor center counters, etc.). This policy does not restrict the use of an Audio/Visual Recording Device (AVRD) in patrol vehicles or officer-worn recording devices used by commissioned rangers. (RM-9, 26.1).

Operation of CCTV cameras, maintenance of recorded images and use of recorded images will be in accordance with NPS and Department policy and applicable laws and regulations. (RM-9, 26.1-26.4) No person will be targeted or monitored merely because of race, religion, gender, sex, disability, national origin, or political affiliation or views. (RM-9, 26.4.2)

Nothing in this policy statement is intended to create any rights, privileges, or benefits not otherwise recognized by law.