

**Appendix G. 1983 Stabilization Work.**

Images from Mac Watson, February 1983 report, prior to the collapse of the back wall,  
Courtesy Marc Simmons.



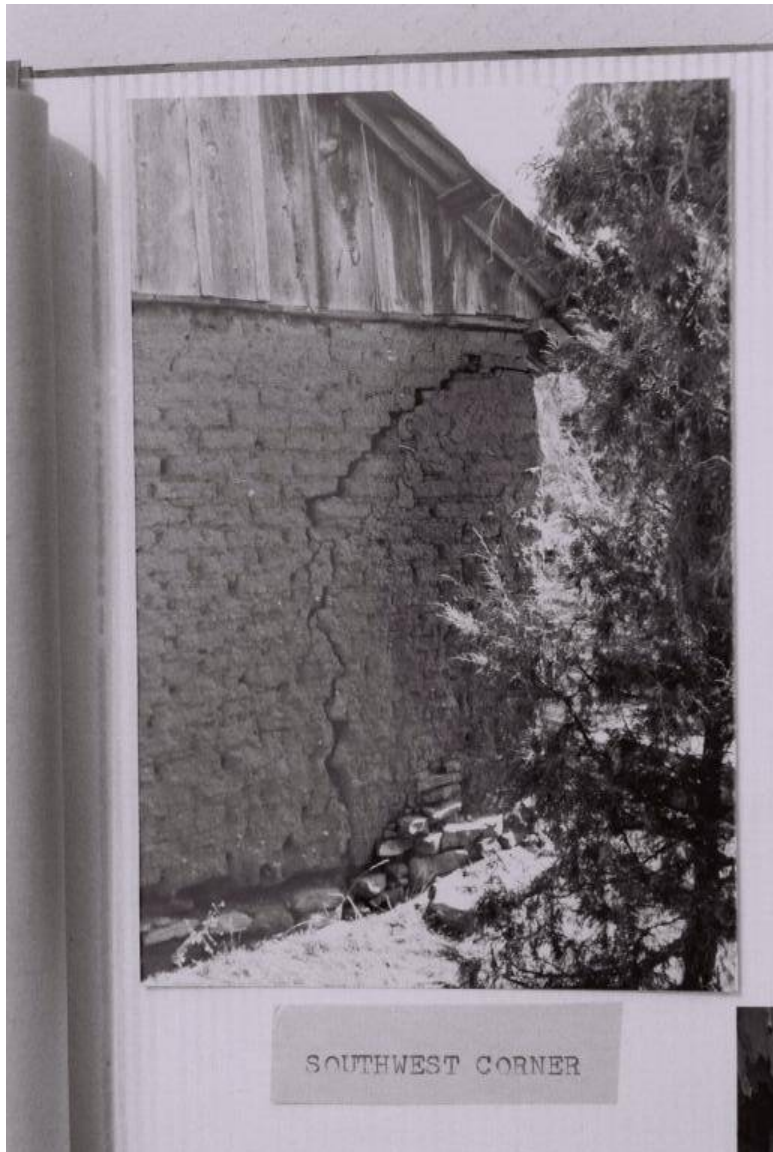
Front of building showing need for roofing and weatherproofing, February 23, 1983.



Rear, northeast corner, showing wall before collapse, February 23, 1983.



Northeast corner before collapse showing separation of wall from main building, February 23, 1983.



Southwest corner showing structural problems, February 23, 1983.



Interior northwest corner before collapse, February 23, 1983.



Interior view of back wall and fire place prior to collapse. February 23, 1983.



## 1983 Wall Collapse

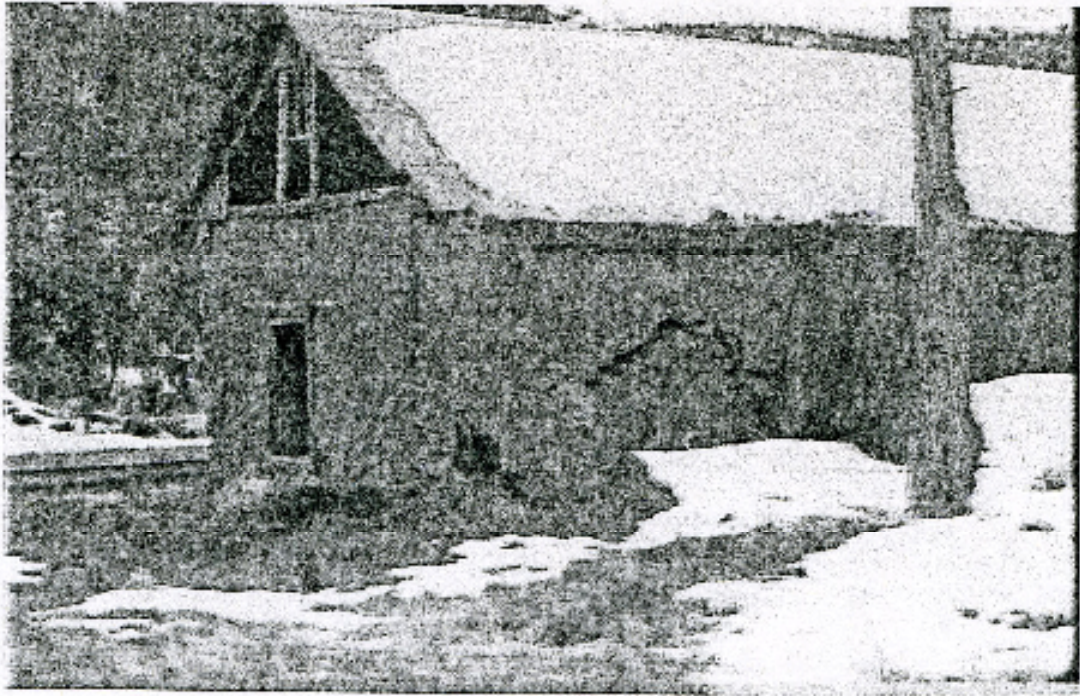
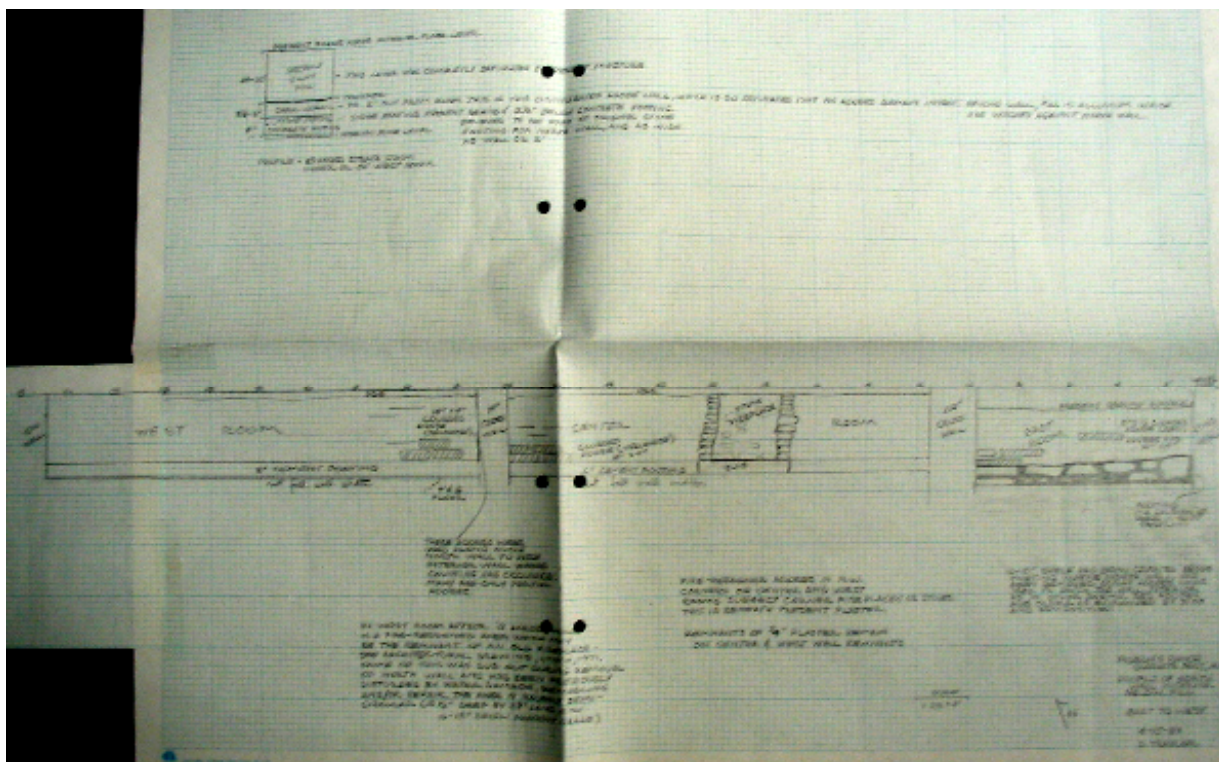


Figure 18: The north wall of the adobe from the northeast, ca. 1983. This image is scanned from a slide in the Park collection.

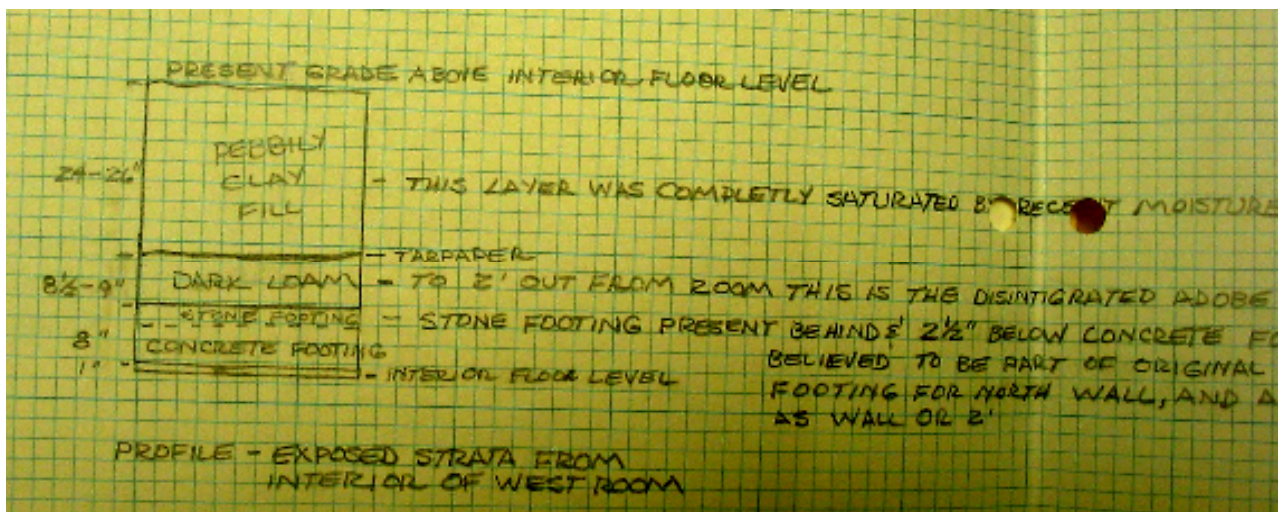
A slide from the park file shows the beginning of the collapse of the back wall, east end. The infill from the 1970s, which filled in the former breezeway and later entrance hall to Greer's museum, can be seen separating and in impending collapse. Copy from Anthony Crosby's *Conditions Assessment Report*, NPS, 2002.

**D. Traylor, April 15, 1983, Field sketches and notes of foundation prior to work on new foundation and back wall. Original in Pigeon's Ranch File, SR-92, Historic Preservation Division, State of New Mexico, Santa Fe.**

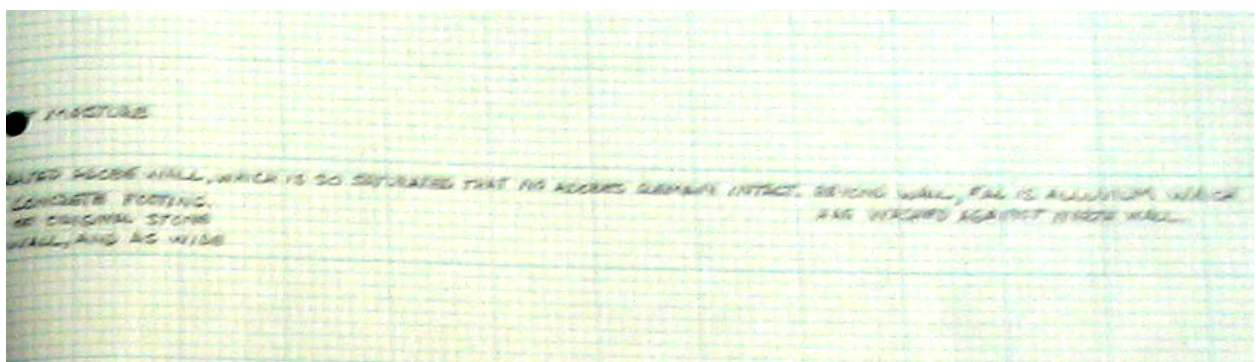


The overall sheet above is reproduced and blown-up in the following pages. They note the poor condition of the back wall in 1983.

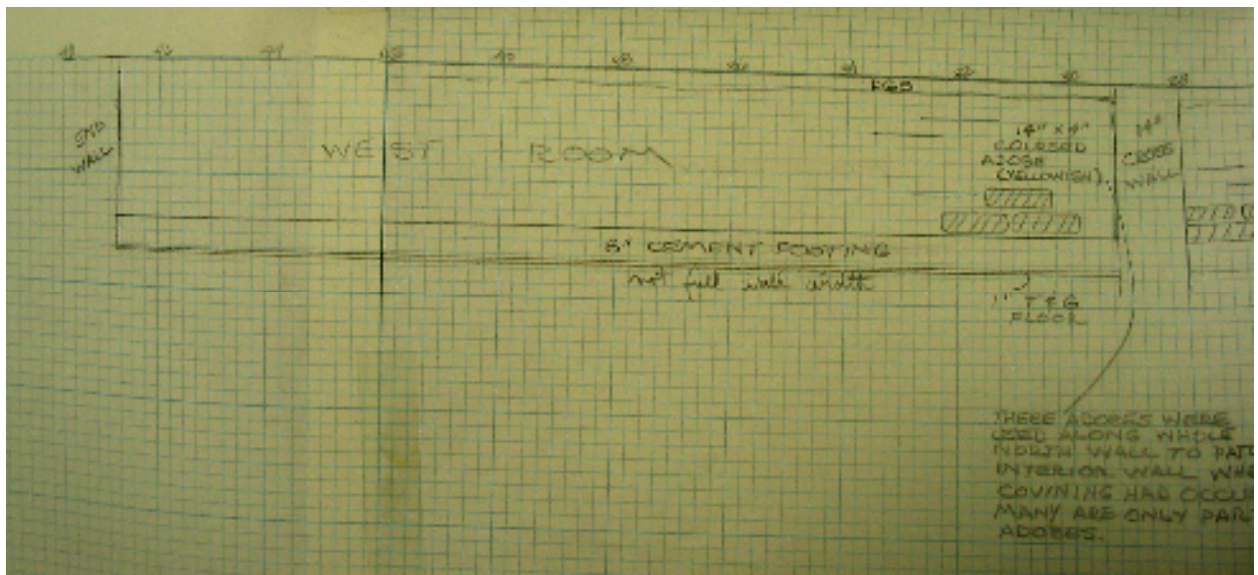




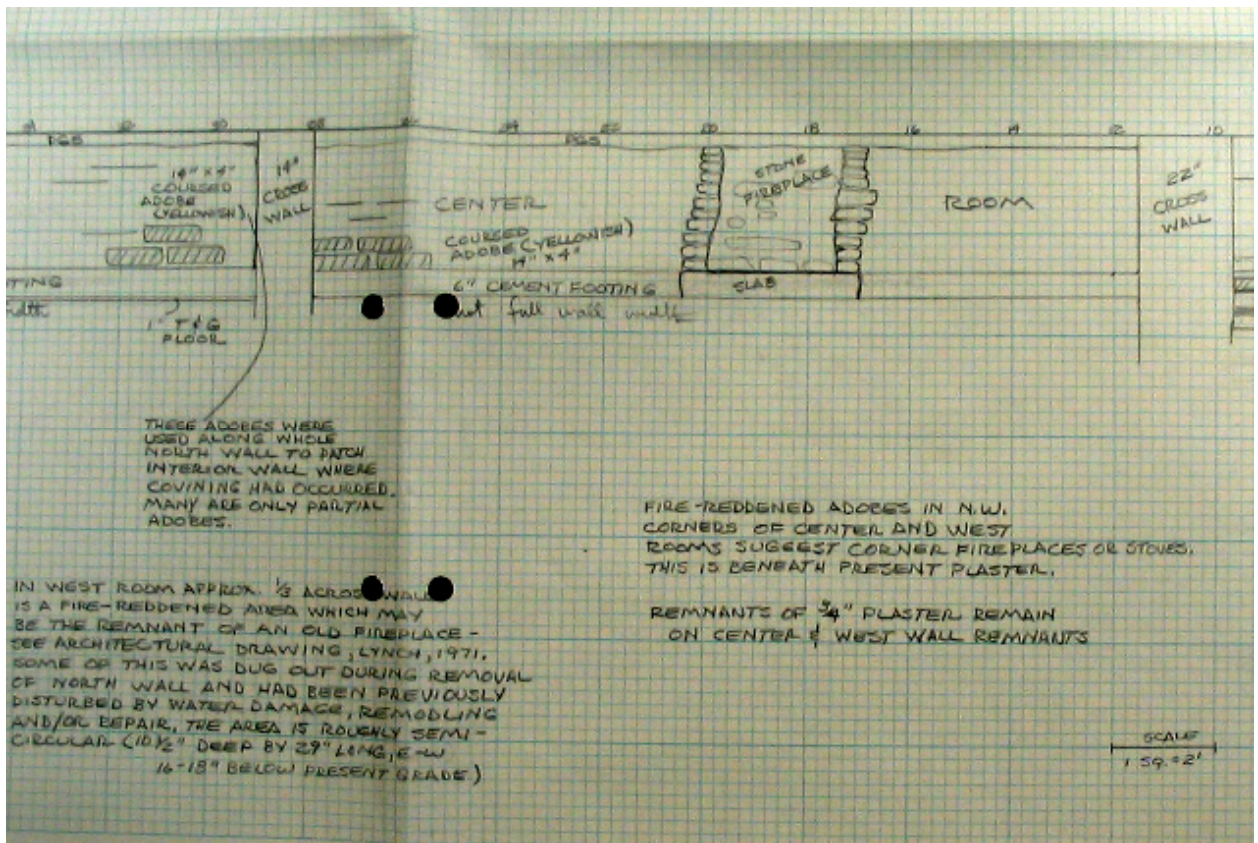
Left half of sheet.



Right half of sheet.

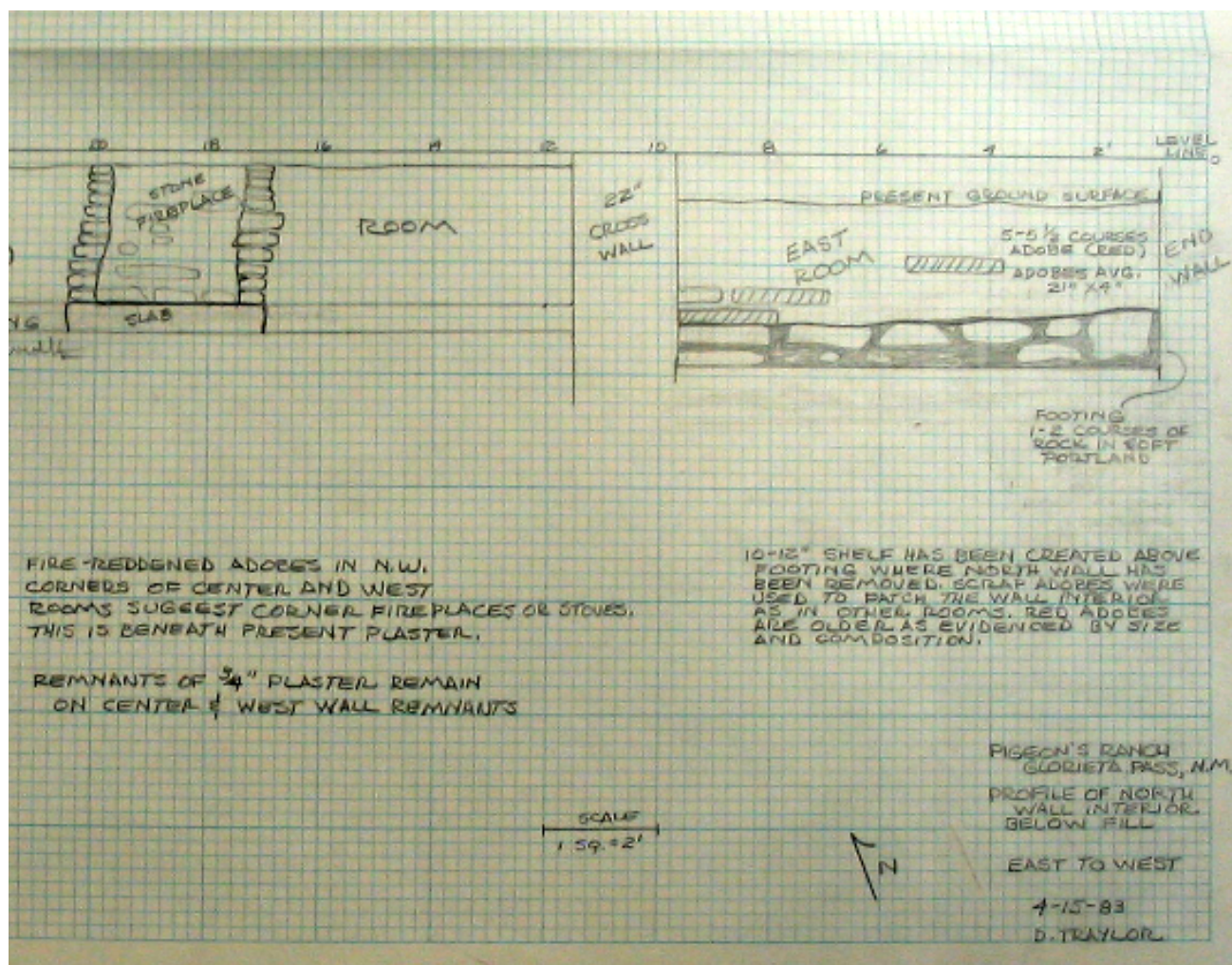


Left portion of sheet.



Center portion of sheet.





Right portion of sheet.

Traylor field snap shots. Note rock foundation







**May 1983 repair work. Photos courtesy Marc Simmons**







