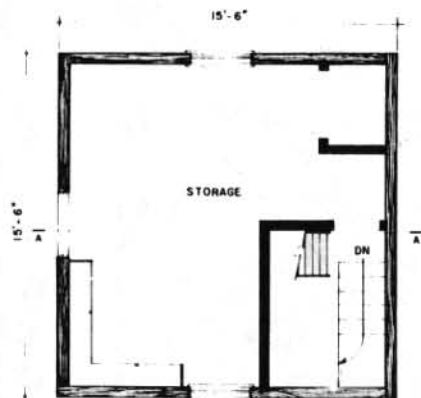


HOLY ASSUMPTION RUSSIAN ORTHODOX CHURCH



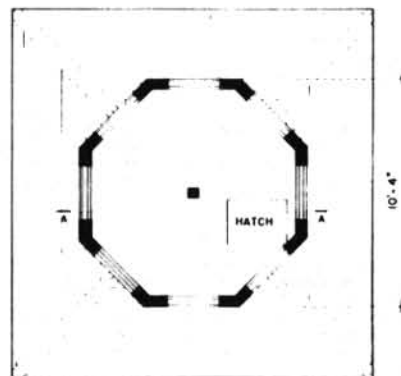
SECOND LEVEL PLAN

SCALE: 3/8" = 1'-0"

The Holy Assumption Russian Orthodox Church was built in 1895-96 according to a common rural Russian design. In 1900, the bell tower and the fence around the church were both completed. Since then, minor changes have been made to the exterior, including a series of modifications to the bell tower windows. Aside from these alterations, this classic, Russian-style village church looks much the same today as it did in 1905.

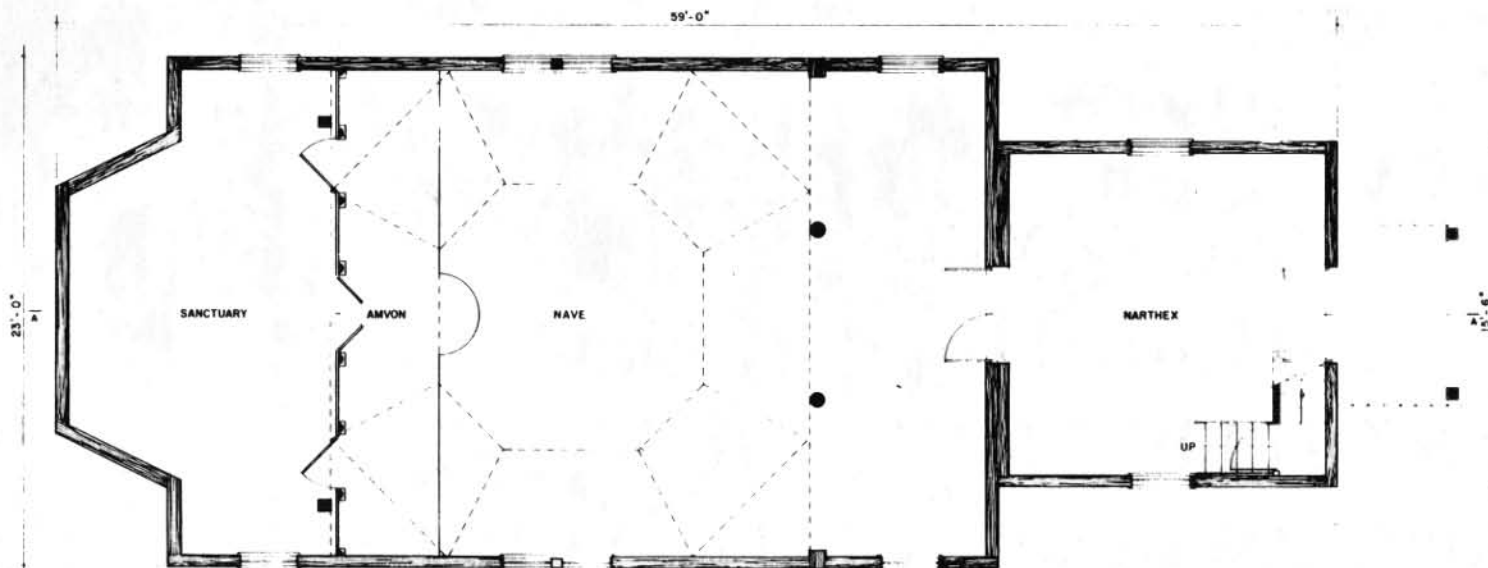
Materials Notes:

- Floor:** Carpeted wood-plank flooring on hewn-log and concrete foundation.
- Walls:** 6" hewn log construction throughout, except for belfry, which is of standard, dimensional framing lumber. Exterior is clad in 6" tongue and groove siding.
- Roof:** 6" hand hewn rafters, wood shingles.



BELFRY PLAN

SCALE: 3/8" = 1'-0"



FIRST LEVEL PLAN

SCALE: 3/8" = 1'-0"

