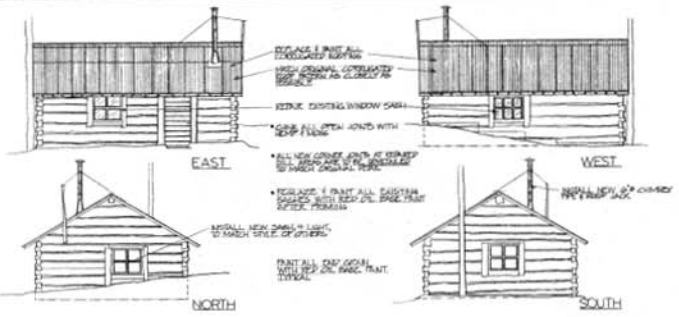
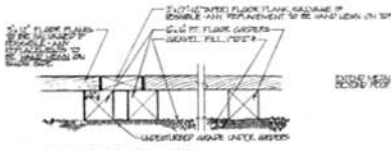


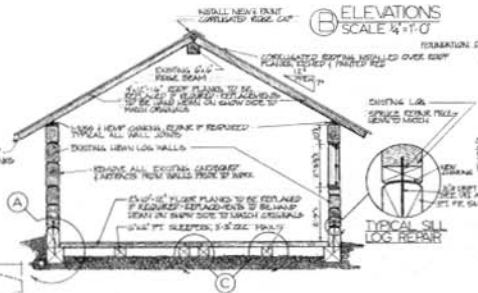
A FOUNDATION AT EXTERIOR WALL
SCALE 1/2"=1'-0"



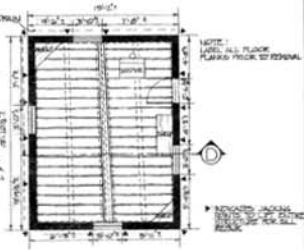
B ELEVATIONS
SCALE 1/4"=1'-0"



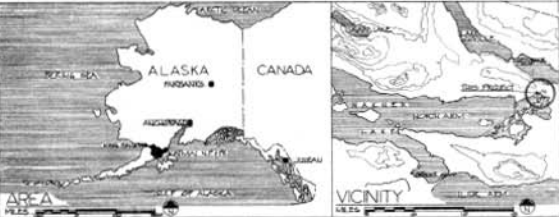
C FLOOR ORDER
SCALE 1/2"=1'-0"



D TRANSVERSE SECTION
SCALE 1/2"=1'-0"



E FLOOR PLAN
SCALE 1/4"=1'-0"



CONSTRUCTION DRAWING THESE DRAWINGS HAVE BEEN EXAMINED AND APPROVED FOR THE PROJECT BY:	BRANCH OF CULTURAL RESOURCES UNITED STATES DEPARTMENT OF THE INTERIOR NATIONAL TRAILS SERVICE ALASKA REGIONAL OFFICE	DRAWN BY: ST SHAW	SHEET NO. 1 EMERGENCY STABILIZATION FURE'S CABIN EASTMAN NATIONAL TRAIL & PRESERVE	DATE: 1973
		CHECKED BY: ST SHAW		PROJECT NO. 60-0007 1073
APPROVED BY: <i>[Signature]</i> SPECIAL AGENT IN CHARGE	NATIONAL TRAIL SERVICE ALASKA REGIONAL OFFICE	SCALE: 1/4"=1'-0" 1973	SHEET 1 OF 1	DATE: 1973