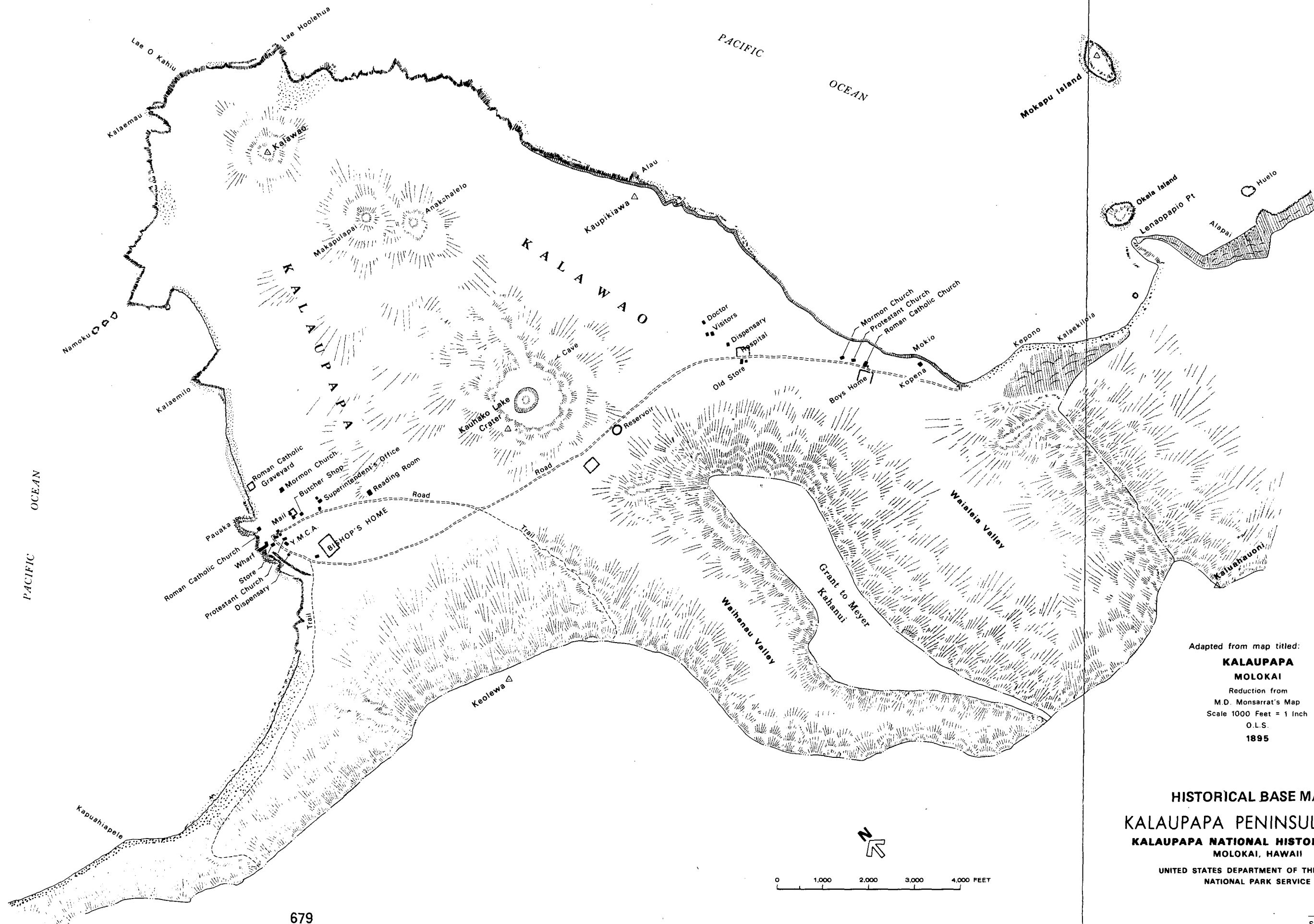
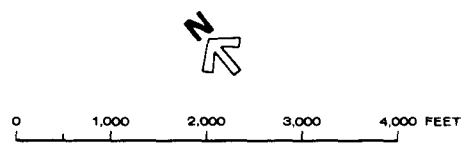


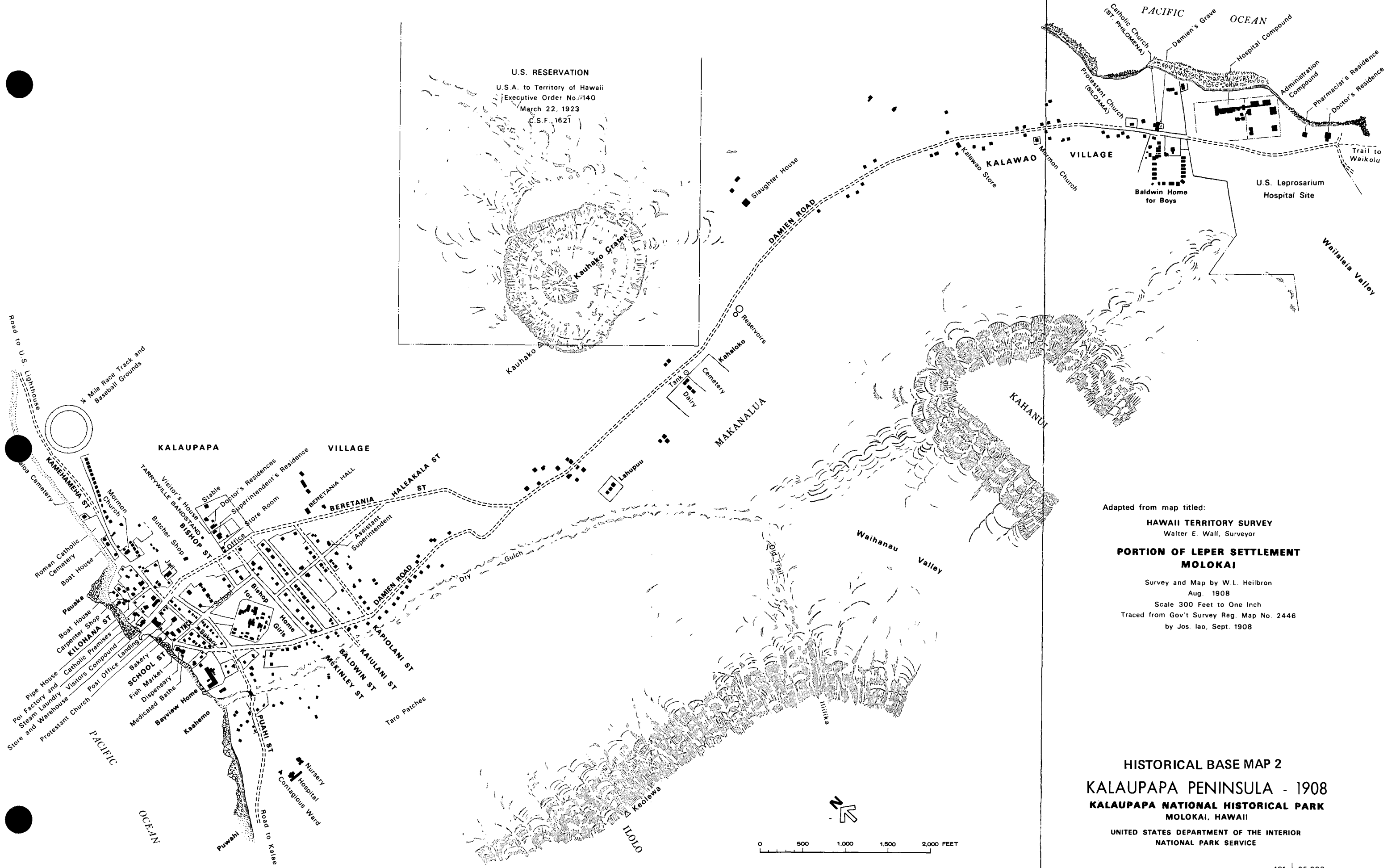
HISTORICAL BASE MAPS



Adapted from map titled:
**KALAUPAPA
 MOLOKAI**
 Reduction from
 M.D. Monsarrat's Map
 Scale 1000 Feet = 1 Inch
 O.L.S.
 1895

HISTORICAL BASE MAP 1
KALAUPAPA PENINSULA - 1895
KALAUPAPA NATIONAL HISTORICAL PARK
 MOLOKAI, HAWAII
 UNITED STATES DEPARTMENT OF THE INTERIOR
 NATIONAL PARK SERVICE



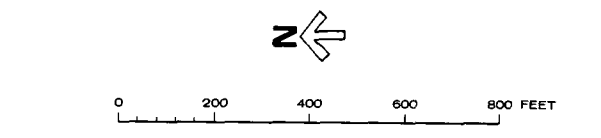


Adapted from map titled:
HAWAII TERRITORY SURVEY
 Walter E. Wall, Surveyor
PORTION OF LEPER SETTLEMENT
MOLOKAI
 Survey and Map by W.L. Heilbron
 Aug. 1908
 Scale 300 Feet to One Inch
 Traced from Gov't Survey Reg. Map No. 2446
 by Jos. Iao, Sept. 1908

HISTORICAL BASE MAP 2
KALAUPAPA PENINSULA - 1908
KALAUPAPA NATIONAL HISTORICAL PARK
MOLOKAI, HAWAII
 UNITED STATES DEPARTMENT OF THE INTERIOR
 NATIONAL PARK SERVICE

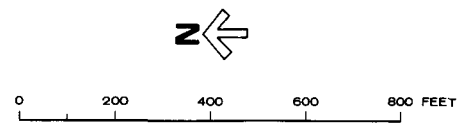


Adapted from map titled:
HAWAII TERRITORY SURVEY
 Robert D. King, Surveyor
LEPROSARIUM
KALAUPAPA, MOLOKAI
 SCALE 1 INCH = 100 FEET
 Survey by Thos. J.K. Evans, Sept. 1930
 from Gov't. Reg. Map 2854 by R. Lane Jr. Nov. 1930.
 Contour Interval 2 Feet.



HISTORICAL BASE MAP 3
KALAUPAPA SETTLEMENT - 1930
KALAUPAPA NATIONAL HISTORICAL PARK
 MOLOKAI, HAWAII
 UNITED STATES DEPARTMENT OF THE INTERIOR
 NATIONAL PARK SERVICE

Adapted from map titled:
**BOARD OF HOSPITALS
 AND SETTLEMENT**
 From office of H.A. Kluegel, Supt.
 April 17, 1936



HISTORICAL BASE MAP 4
KALAUPAPA SETTLEMENT - 1936
KALAUPAPA NATIONAL HISTORICAL PARK
 MOLOKAI, HAWAII
 UNITED STATES DEPARTMENT OF THE INTERIOR
 NATIONAL PARK SERVICE



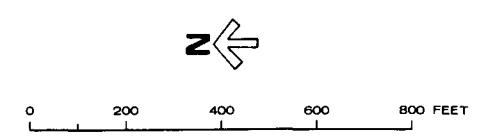
Adapted from map titled:
HAWAII TERRITORY SURVEY
 L.M. Whitehouse Surveyor
LEPROSARIUM
KALAUPAPA, MOLOKAI
 Survey and map by Thos. J.K. Evans
 Nov. 1939



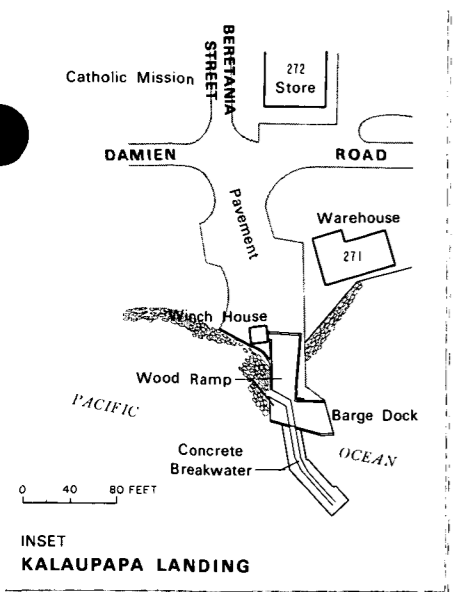
HISTORICAL BASE MAP 5
KALAUPAPA SETTLEMENT - 1939
KALAUPAPA NATIONAL HISTORICAL PARK
 MOLOKAI, HAWAII
 UNITED STATES DEPARTMENT OF THE INTERIOR
 NATIONAL PARK SERVICE



Adapted from map titled:
HAWAII TERRITORY SURVEY
 L.M. Whitehouse Surveyor
KALAUPAPA SETTLEMENT
KALAUPAPA, MOLOKAI
 Survey and map by Thos. J.K. Evans
 Nov. 1939
 Resurvey by Ernest H. Fernandes
 July 1953



HISTORICAL BASE MAP 6
KALAUPAPA SETTLEMENT - 1953
KALAUPAPA NATIONAL HISTORICAL PARK
MOLOKAI, HAWAII
 UNITED STATES DEPARTMENT OF THE INTERIOR
 NATIONAL PARK SERVICE



Adapted from map titled:
HAWAII TERRITORY SURVEY
 L.M. Whitehouse Surveyor
KALAUPAPA SETTLEMENT
KALAUPAPA, MOLOKAI
 Survey and map by Thos. J.K. Evans
 Nov. 1939
 Resurvey by Ernest H. Fernandes
 July 1953 April - June, 1965 March 1966
 Field Book: 1499, 1550 Field Book: 1744, 1766 Field Book: 1766

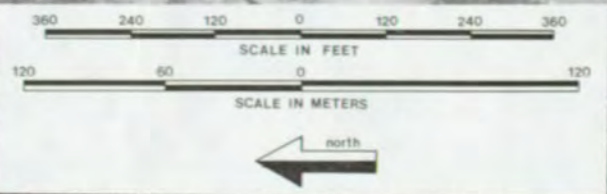


HISTORICAL BASE MAP 7
KALAUPAPA SETTLEMENT - 1966
KALAUPAPA NATIONAL HISTORICAL PARK
MOLOKAI, HAWAII
 UNITED STATES DEPARTMENT OF THE INTERIOR
 NATIONAL PARK SERVICE

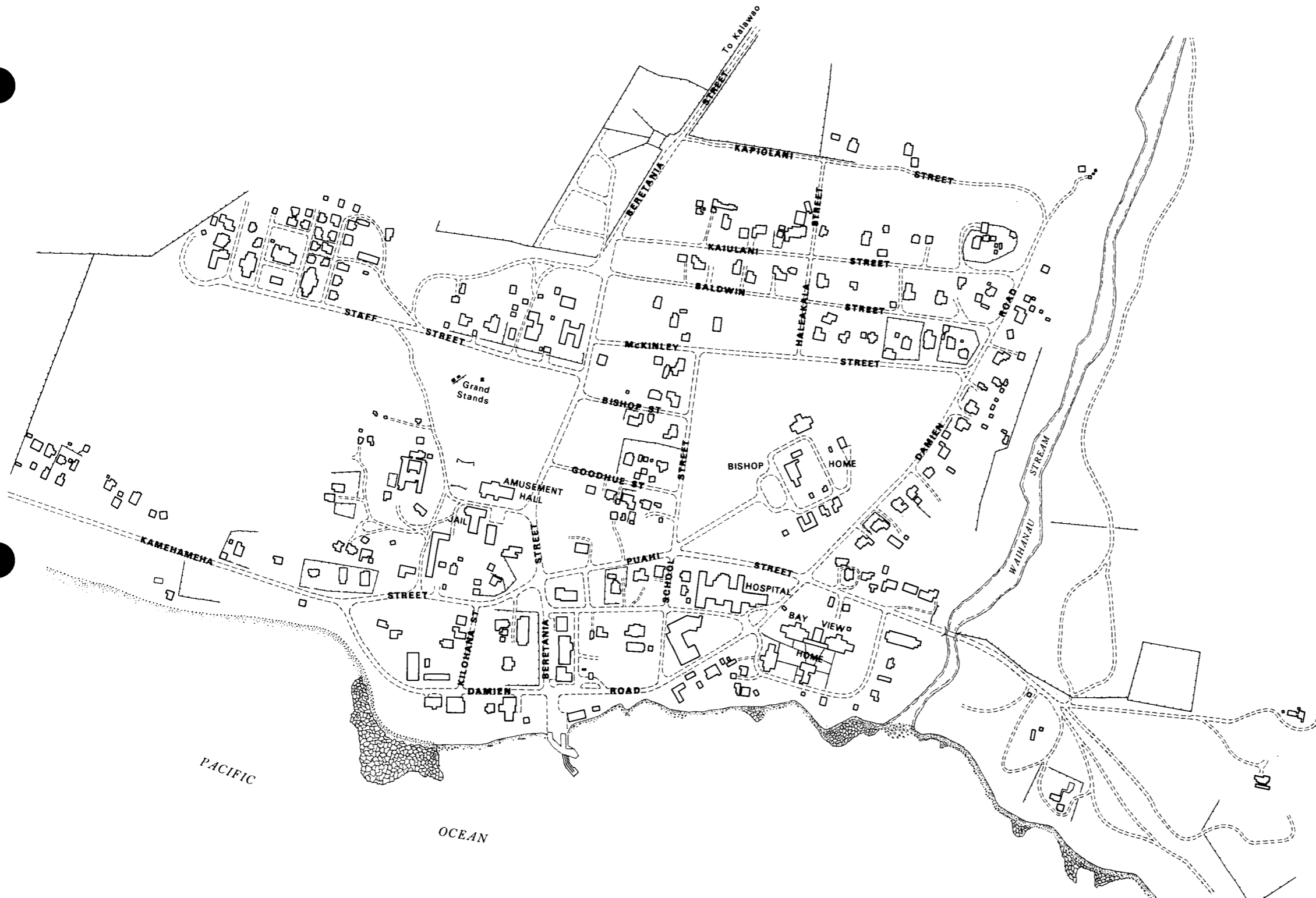
HISTORICAL BASE MAP #

INVENTORY OF STRUCTURES KALAUPAPA SETTLEMENT

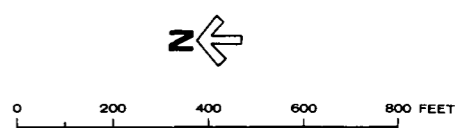
KALAWAO COUNTY—MOLOKAI, HAWAII



KASE 80.020
MAR 77 WRO-PP
U.S. Dept. of the Interior—National Park Service
Sheet 2 of 3



Adapted from map titled:
**KALAUPAPA NATIONAL HISTORIC PARK
 WESTERN REGION
 SETTLEMENT AREA & LANDING STRIP
 TOPOGRAPHIC MAP**
 U.S. DEPARTMENT OF THE INTERIOR
 NATIONAL PARK SERVICE
 DENVER SERVICE CENTER
 DRW. NO. 491/41002



HISTORICAL BASE MAP 9
KALAUPAPA SETTLEMENT - 1983
KALAUPAPA NATIONAL HISTORIC PARK
MOLOKAI, HAWAII
 UNITED STATES DEPARTMENT OF THE INTERIOR
 NATIONAL PARK SERVICE