

APPENDIX B:
TREATMENT PLANS



Symbol	Botanical Name	Common Name(s)	Symbol	Botanical Name	Common Name(s)
Trees and Shrubs					
Abe gr	Abelia x grandiflora	Glossy abelia	Mal sp W	Malus spp. wild crabapple	Wild crab (from rootstock)
Ace pl	Acer platanoides	Norway maple	Phi co	Philadelphus coronarius	Mock orange
Ace pl C	Acer p. 'Crimson King'	Crimson King maple	Pic ab	Picea abies	Norway spruce
Ace ru	Acer rubrum	Red maple	Pic pu	Picea pungens	Colorado blue spruce
Ace sa	Acer saccharum	Sugar maple	Pie ja	Pieris japonica	Japanese pieris
Ber th	Berberis thunbergii	Japanese barberry	Pin st	Pinus strobus	Eastern white pine
Bet pe	Betula pendula	European white birch	Pla oc	Platanus occidentalis	Sycamore
Bet sp	Betula spp.	White birch	Pru ce	Prunus cerasifera 'Atropurpera'	Purple leaf plum
Bud sp	Buddleia spp.	Butterfly-bush	Pru pen	Prunus pensylvanica	Wild red/P'in cherry
Bux mi	Buxus microphylla var. koreana	Korean boxwood	Pru per	Prunus persica	Common peach
Bux se	Buxus sempervirens	Common boxwood	Pru pr N	Prunus persica "Nectarina"	Nectarine
Car il	Carya illinoensis	Pecan	Pru se	Prunus serrulata	Oriental cherry
Car sp	Carya spp.	Hickory	Pru sp	Prunus spp.	Cherry
Cat sp	Catalpa spp.	Catalpa	Pru su	Prunus subhirtella 'Pendula'	Weeping Higan cherry
Cer ca	Cercis canadensis	Redbud	Pru tr	Prunus triloba	Flowering almond
Cha la	Chamaecyparis lawsoniana	Port Orford cedar	Pyra coc	Pyracantha coccinea	Pyracantha (Firethorn)
Cor fl	Cornus florida	Flowering dogwood	Pyru com	Pyrus communis	Common pear
Cra ph	Crataegus phaenopyrum	Washington hawthorn	Que pa	Quercus palustris	Pin oak
Cry ja	Cryptomeria japonica	Japanese cryptomeria	Que ve	Quercus velutina	Black oak
Fag gr	Fagus grandifolia	American beech	Rho ob	Rhod. x obtusum 'Hinodegiri'	Hinodegiri azalea
Fag sy	Fagus sylvatica 'Atropunicea'	Purple leaf beech	Rho sp	Rhododendron spp.	Azalea/Rhododendron
For ov	Forsythia ovata	Early forsythia	Rob ps	Robinia pseudoacacia	Black locust
Fra pe	Fraxinus pennsylvanica	Green ash	Ros sp	Rosa spp.	Rose
Hib ro	Hibiscus rosa sinensis	Chinese hibiscus	Sal ba	Salix babylonia	Weeping willow
Hib sp	Hibiscus spp.	Hibiscus	Sal ni	Salix nigra	Black willow
Hib sy	Hibiscus syriacus	Rose-of-Sharon	Sas al	Sassafras albidium	Sassafras
Ile cr	Ilex crenata	Japanese holly	Seq se	Sequoia sempervirens	Redwood
Ile gl	Ilex glabra	Inkberry	Spi sr	Spiraea prunifolia	Bridalwreath spirea
Ile op	Ilex opaca	American holly	Syr ch	Syringa x chinensis	Chinese lilac
Jug sp	Juglans spp.	Walnut	Syr pe	Syringa x persica	Persian lilac
Lig sp	Ligustrum spp.	Privet	Syr vu	Syringa vulgaris	Common lilac
Liq st	Liquidambar styraciflua	Sweet gum	Tax bac	Taxus bacatta	English yew
Lir tu	Liriodendron tulipifera	Tulip poplar	Tax ba R	Taxus bacatta 'Repandens'	Dwarf English yew
Lon sp	Lonicera spp.	Honeysuckle	Tax ca	Taxus canadensis	Canadian yew
Mag so	Magnolia x soulangiana	Saucer magnolia	Tax cu	Taxus cuspidata 'Capitata'	Japanese yew
Mag sp	Magnolia spp.	Magnolia	Tax me	Taxus x media 'Hicksii'	Hicks yew
Mag st	Magnolia stellata	Star magnolia	Tax sp	Taxus spp.	Yew
Mal sp A	Malus spp. Apple	Apple	Tsu ca	Tsuga canadensis	Canadian hemlock
Mal sp H	Malus spp. 'Hopa'	Hopa crabapple	Ulm am	Ulmus americana	American elm
Mal sp K	Malus spp. 'Katherine'	Katherine crabapple	Ulm pu	Ulmus parvifolia	Chinese elm
Mal sp L	Malus spp. 'Liset'	Liset crabapple	Zel se	Zelkova serrata	Japanese zelkova
Groundcovers, Vines, and Herbaceous					
Agr te	Agrostis tenuis 'Pennecross'	Pennecross bentgrass	Iri sp	Iris spp.	Iris
Aqu sp	Aquilegia spp.	Columbine	Nym sp	Nymphaea spp.	Water lily
Beg tu	Begonia tuberhybrida	Tuberous begonias	Pae sp	Paeonia spp.	Peony
Cal bi	Caladium bicolor	Caladium	Pel ho	Pelargonium x hortorum	Common geranium
Cam ra	Campsis radicans	Trumpet creeper	Sal sp	Salvia splendens	Scarlet sage
Cen ce	Centaurea ceneraria	Dusty Miller	Sin sp	Sinningia spp.	Common gloxinia
Car pe	Carum petroselinum	Parsley	Sed sp	Sedum spectabile	Showy sedum
Cle sp	Clematis spp.	Clematis	Tag sp	Tagetes spp.	Marigold
Cor va	Coronilla varia	Crown vetch	Tul sp	Tulipa spp.	Tulip
Cyc sp	Cyclamen spp.	Cyclamen	Typ la	Typha latifolia	Common cattail
Dia de	Dianthus deltoides	Maiden pink	Vin mi	Vinca minor	Vinca (Periwinkle)
Gla sp	Gladiolus spp.	Gladiola	Vio sp	Viola spp.	Violet
Hed he	Hedera helix	English ivy	Vio wi	Viola x wittrockiana	Common pansy
Hel tu	Helianthus tuberosus	Jerusalem artichoke	Vit la	Vitus labrusca 'Concord'	Concord grape
Imp wa	Impatiens wallerana	Impatiens	Vit sp	Vitus spp.	Grape
Iri ge	Iris x germanica	German iris	Wis si	Wisteria sinensis	Chinese wisteria

Notes: Plant sizes in inches indicate trunk diameter at breast height; plant sizes in feet indicate shrub diameter; (ms) multi-stemmed

Cultural Landscape Report for Eisenhower National Historic Site

Treatment Plan Overall: 2006

National Park Service Olmsted Center for Landscape Preservation

Sources: Historic plans (1955, 1967, 1969); CADD drawing (1999); Site visits (2002, 2005).

Notes: Gray boxes represent areas of enlargement for each farm. Task letters refer to sections in Chapter 2. Location and scale of features are approximate. Drawn by J. Killion using Illustrator 10.

Legend:

- - - - - Park boundary
- ▬ Paved road
- ▬ Gravel road
- ▭ Structure
- Trees
- × A1 Fences
- A1 - post and wire
- A2 - post and wire w board
- B - 4-board
- C - cross-board
- D - picket

FARM #1

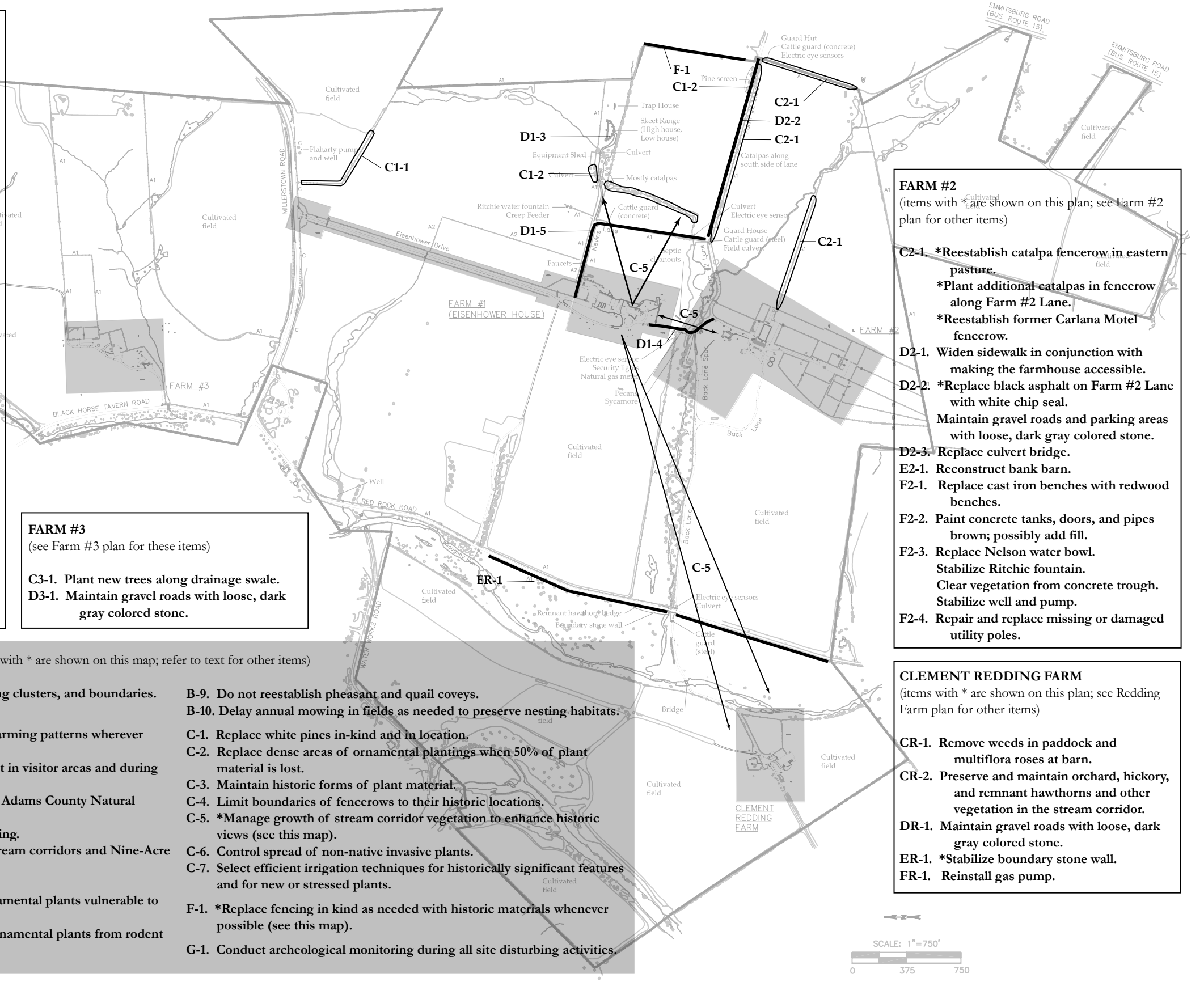
(items with * are shown on this plan; see Farm #1 plans for other items)

- C1-1. *Reestablish Flaharty fencerow.
- C1-2. *Preserve and maintain white pine screen.
- *Plant additional trees at Equipment Shed screen.
- D1-1. Remove green path to playhouse. Remove brick step; add ramp handrails. Construct accessible route at south rose garden; pave with gray chip seal.
- D1-2. Allow bank barn ramp to revert to grass.
- D1-3. *Monitor condition of skeet range walkways.
- D1-4. Regrade path between Farms #1 and #2; replace mulch with compacted gravel.
- D1-5. Replace dark asphalt on Eisenhower Drive with white chip seal.
- *Replace dark asphalt on Nevins Lane with white chip seal.
- Replace dark asphalt at barnyard with dark gray chip seal.
- D1-6. Replace green path at barn screen and teahouse with light brown chip seal. Replace brick walk with light brown chip seal.
- Surface new accessible path at south rose garden with gray chip seal.
- Replace dark asphalt path to guesthouse with gray chip seal.
- F1-1. Replace cast iron benches with redwood benches.
- F1-2. Reinstall spruce tree plaques, laundry pole, and guesthouse rocking chairs.

- FARM #3**
(see Farm #3 plan for these items)
- C3-1. Plant new trees along drainage swale.
 - D3-1. Maintain gravel roads with loose, dark gray colored stone.

SITE-WIDE RECOMMENDATIONS (items with * are shown on this map; refer to text for other items)

- A-1. Preserve spatial patterns of fields, building clusters, and boundaries.
- A-2. Carefully manage natural areas.
- B-1. Preserve historic land uses and contour farming patterns wherever possible.
- B-2. Limit use of non-historic farm equipment in visitor areas and during times of peak visitation.
- B-3. Select crop rotations in consultation with Adams County Natural Resource Conservation Service.
- B-4. Preserve pasture areas and livestock grazing.
- B-5. Continue prohibition of grazing along stream corridors and Nine-Acre Pasture.
- B-6. Do not restore fishing pond.
- B-7. Manage deer population and protect ornamental plants vulnerable to browsing with deer netting.
- B-8. Protect orchard plants and susceptible ornamental plants from rodent damage.
- B-9. Do not reestablish pheasant and quail coverts.
- B-10. Delay annual mowing in fields as needed to preserve nesting habitats.
- C-1. Replace white pines in-kind and in location.
- C-2. Replace dense areas of ornamental plantings when 50% of plant material is lost.
- C-3. Maintain historic forms of plant material.
- C-4. Limit boundaries of fencerows to their historic locations.
- C-5. *Manage growth of stream corridor vegetation to enhance historic views (see this map).
- C-6. Control spread of non-native invasive plants.
- C-7. Select efficient irrigation techniques for historically significant features and for new or stressed plants.
- F-1. *Replace fencing in kind as needed with historic materials whenever possible (see this map).
- G-1. Conduct archeological monitoring during all site disturbing activities.



FARM #2

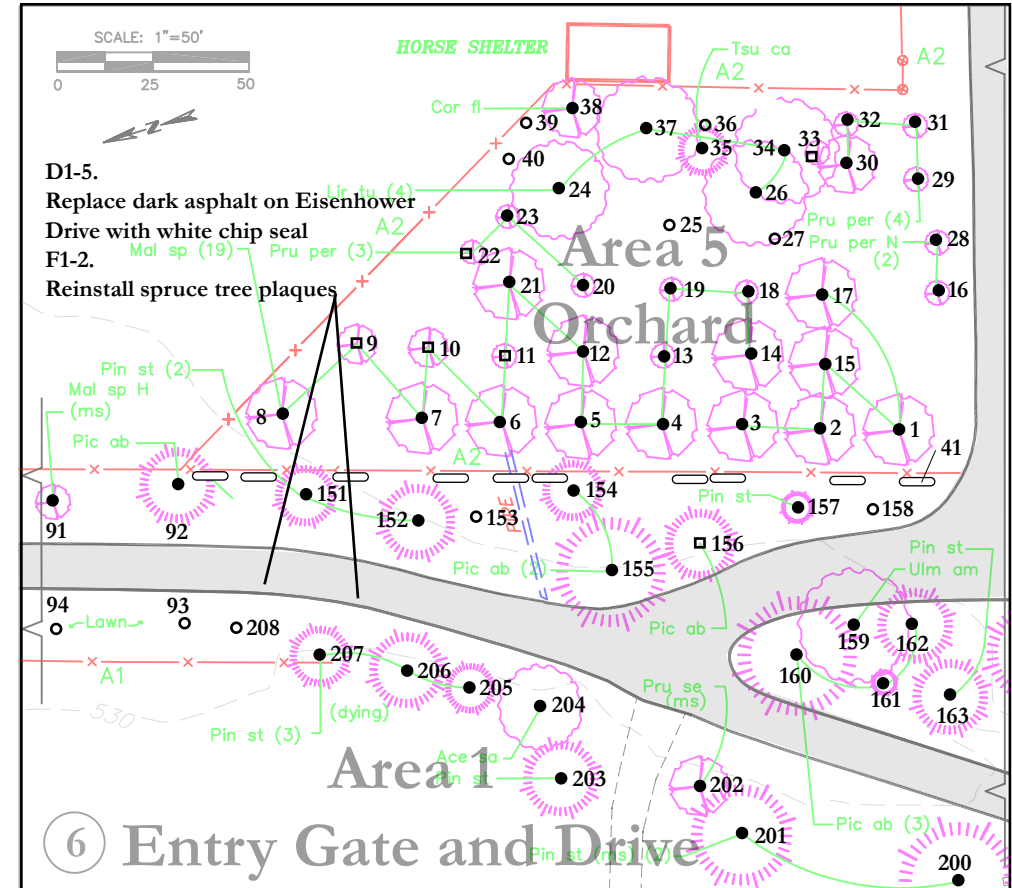
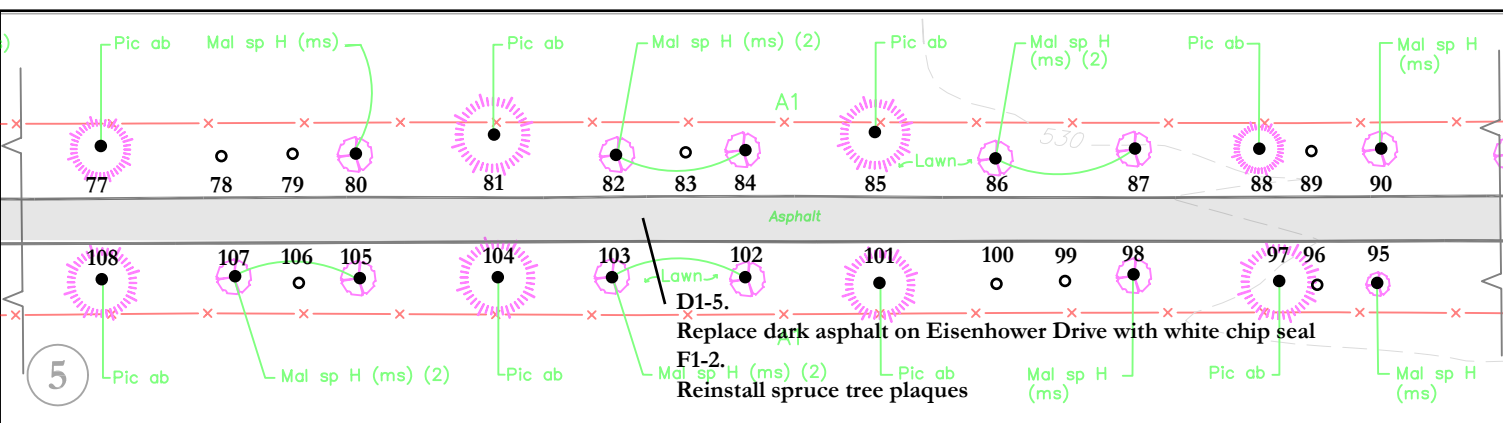
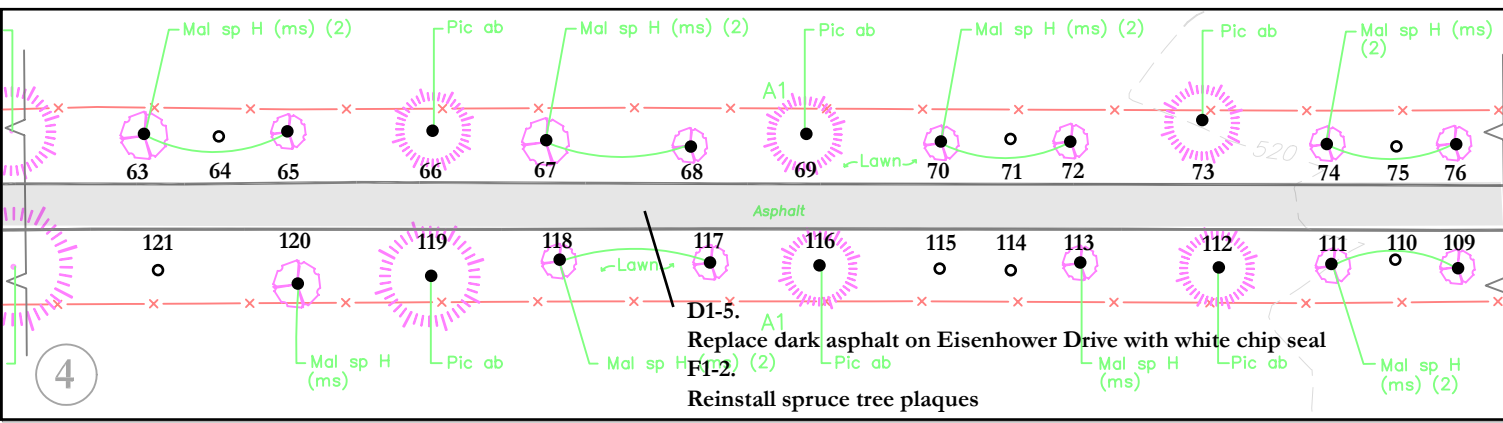
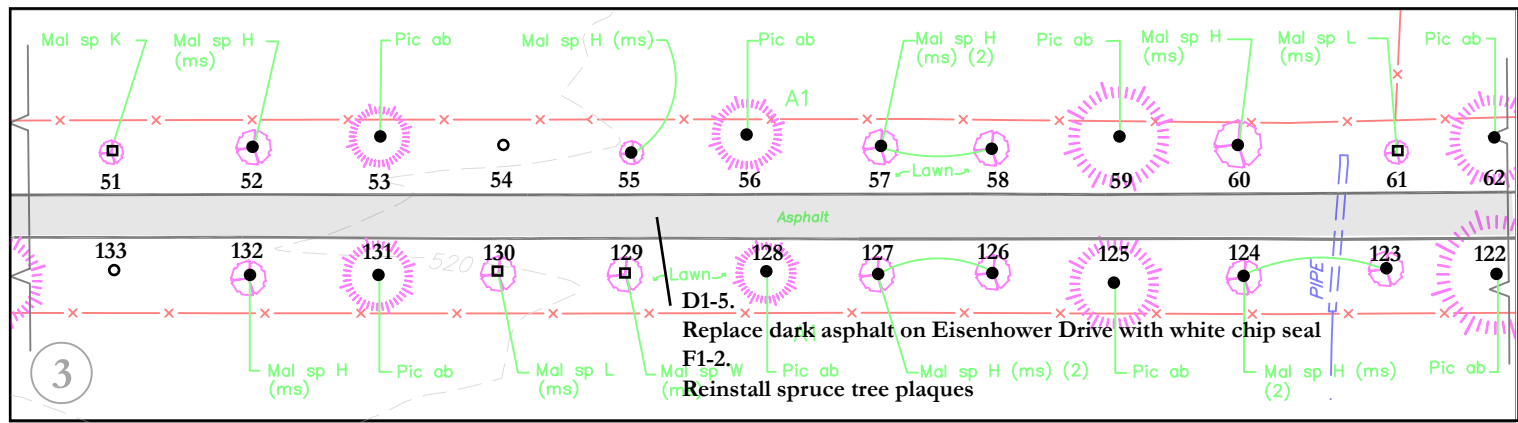
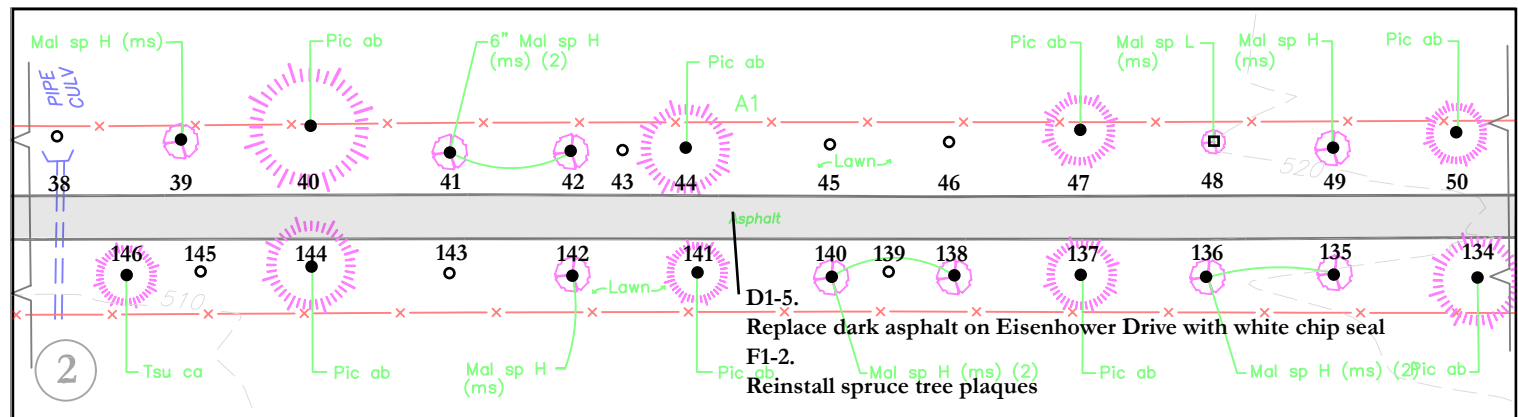
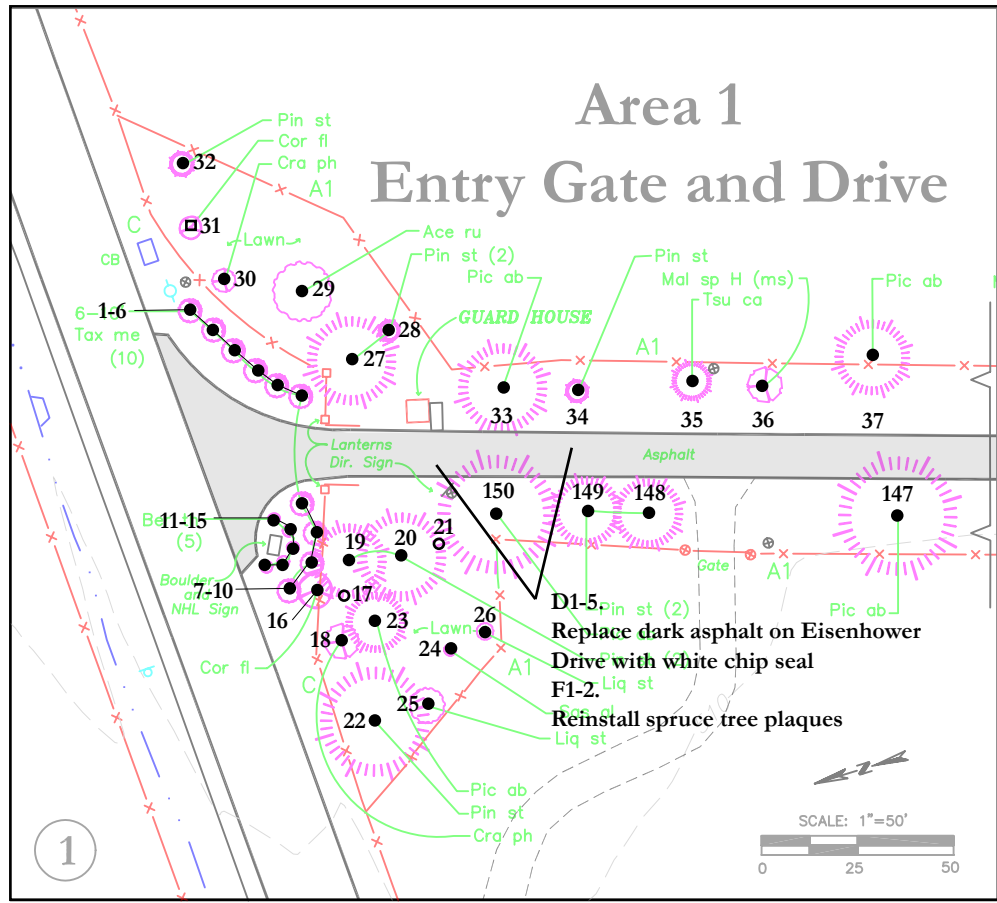
(items with * are shown on this plan; see Farm #2 plan for other items)

- C2-1. *Reestablish catalpa fencerow in eastern pasture.
- *Plant additional catalpas in fencerow along Farm #2 Lane.
- *Reestablish former Carlana Motel fencerow.
- D2-1. Widen sidewalk in conjunction with making the farmhouse accessible.
- D2-2. *Replace black asphalt on Farm #2 Lane with white chip seal.
- Maintain gravel roads and parking areas with loose, dark gray colored stone.
- D2-3. Replace culvert bridge.
- E2-1. Reconstruct bank barn.
- F2-1. Replace cast iron benches with redwood benches.
- F2-2. Paint concrete tanks, doors, and pipes brown; possibly add fill.
- F2-3. Replace Nelson water bowl. Stabilize Ritchie fountain. Clear vegetation from concrete trough. Stabilize well and pump.
- F2-4. Repair and replace missing or damaged utility poles.

CLEMENT REDDING FARM

(items with * are shown on this plan; see Redding Farm plan for other items)

- CR-1. Remove weeds in paddock and multiflora roses at barn.
- CR-2. Preserve and maintain orchard, hickory, and remnant hawthorns and other vegetation in the stream corridor.
- DR-1. Maintain gravel roads with loose, dark gray colored stone.
- ER-1. *Stabilize boundary stone wall.
- FR-1. Reinstall gas pump.



Cultural Landscape Report for Eisenhower National Historic Site

Treatment Plan Farm #1: 2006 (1/2)

National Park Service
Olmsted Center for Landscape Preservation

Sources:
Historic plans (1955, 1967, 1969); CADD drawing (5/2000); Site visits (2002, 2005).

Notes:
Task letters refer to sections in Chapter 2 and numbers refer to App. A. Location and scale of features are approximate. Drawn by Killion, OCLP.

Plant Legend:

- 20 Plant number
- Historic, existing
- Historic, missing
- Non-historic existing
- ◇ Undetermined existing
- x Undetermined missing

Refer to text for specific treatment recommendations

Cultural Landscape
Report for
Eisenhower
National Historic
Site

**Treatment Plan
Farm #1: 2006 (2/2)**

National Park Service
Olmsted Center for
Landscape Preservation

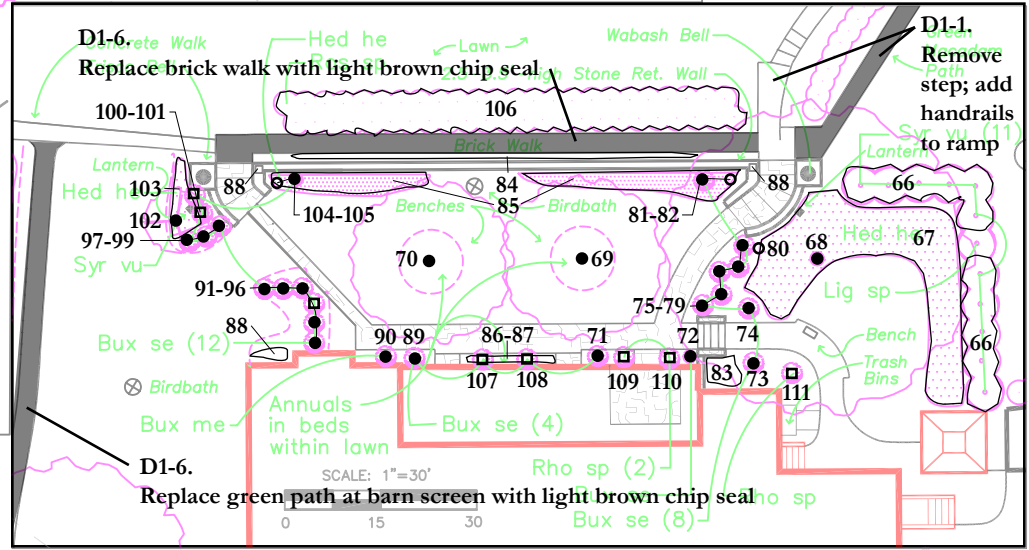
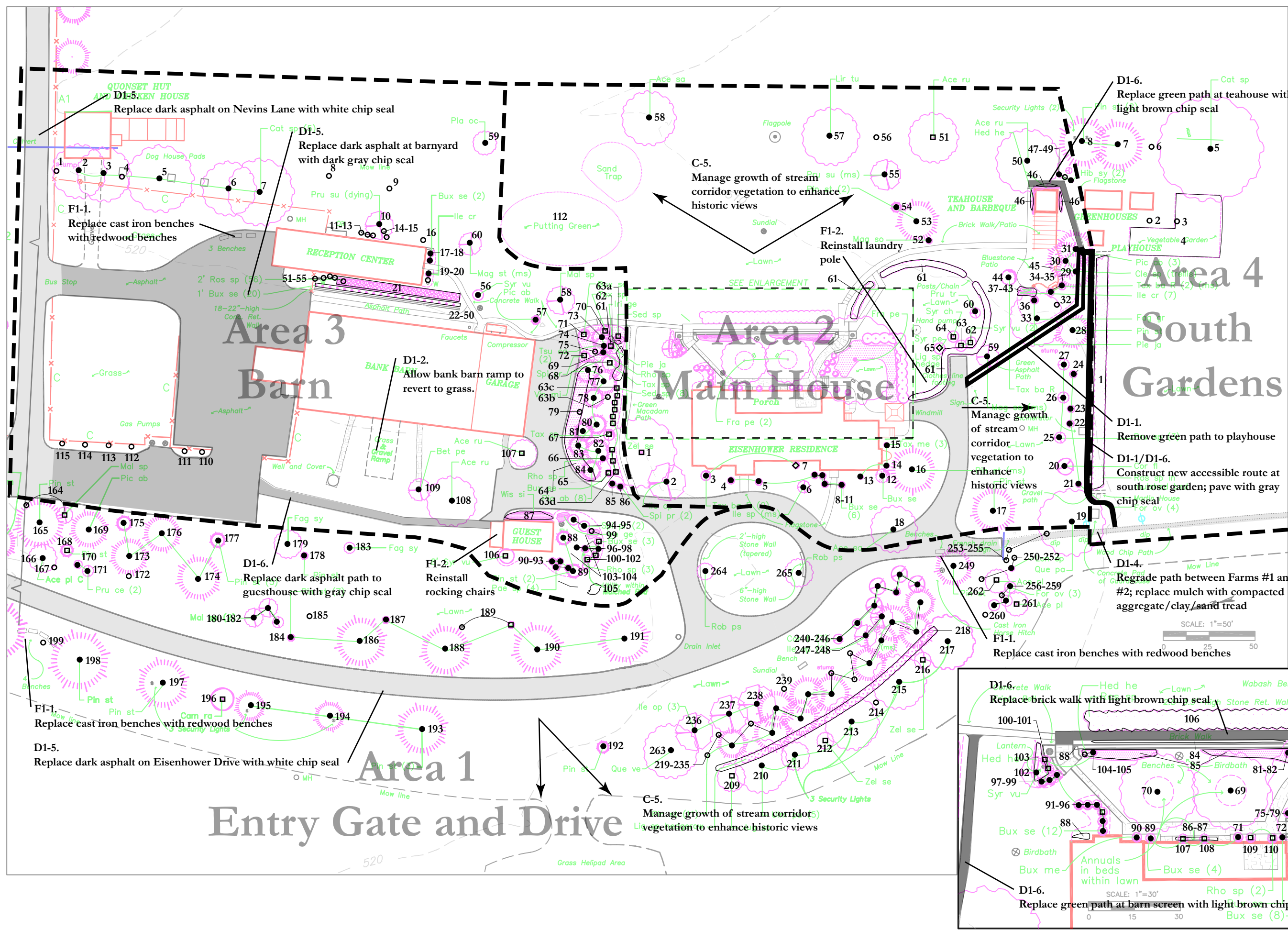
Sources:
Historic photographs and
plans (1955,1967,1969);
CADD drawing (5/2000);
Site visits (2002, 2005).

Notes:
Task letters refer to
sections in Chapter 2 and
numbers refer to App. A
Location and scale of
features are approximate.
Drawn by Killion, OCLP.

Plant Legend:

20	Plant number
●	Historic, existing
○	Historic, missing
□	Non-historic existing
◇	Undetermined existing
x	Undetermined missing

Refer to text for specific treatment recommendations

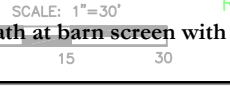
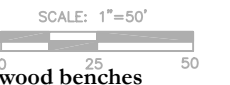


Entry Gate and Drive

**Area 3
Barn**

**Area 2
Main House**

**Area 4
South
Gardens**



Cultural Landscape Report for Eisenhower National Historic Site

Treatment Plan Farm #2: 2006

National Park Service
Olmsted Center for Landscape Preservation

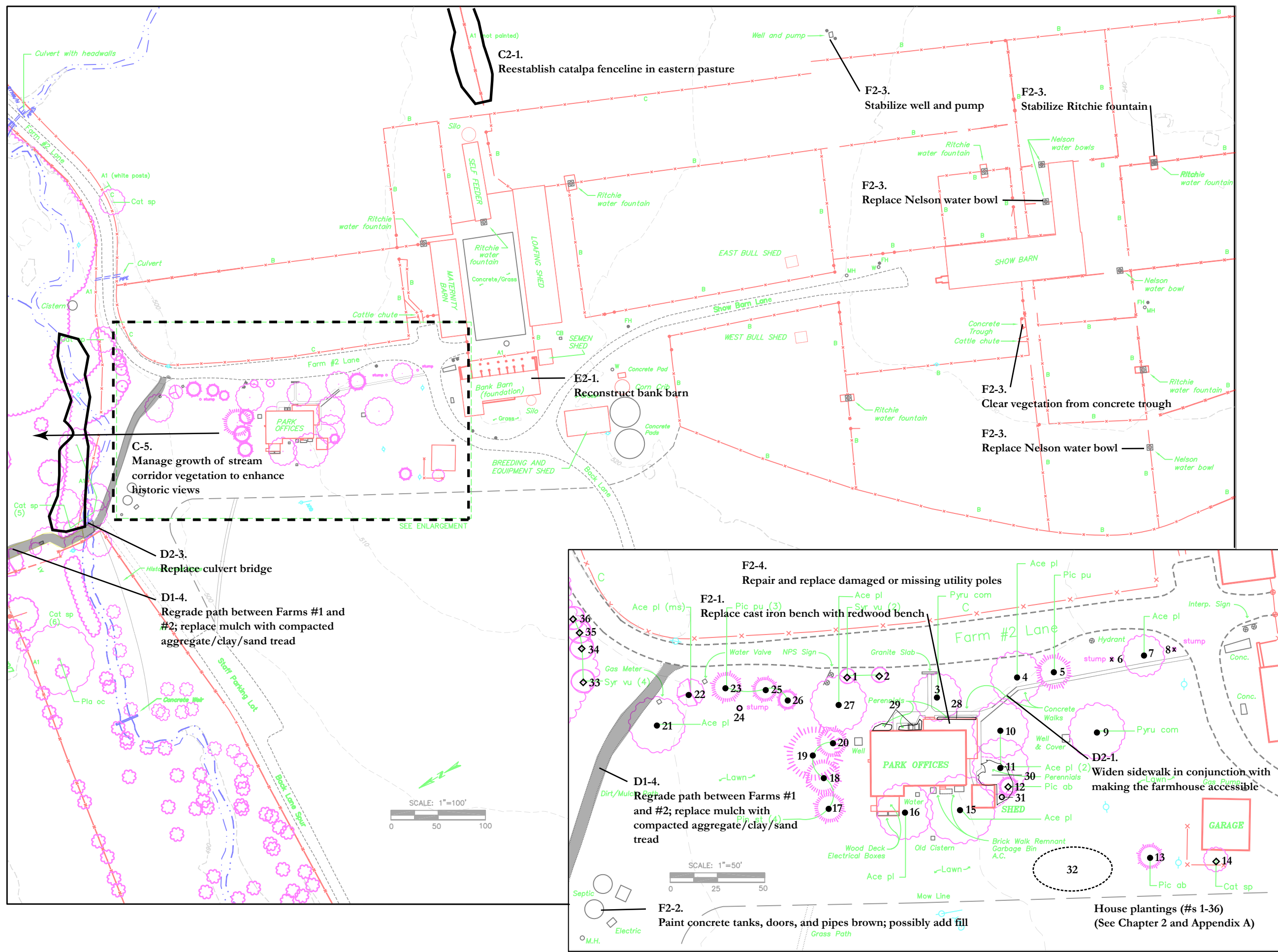
Sources:
Historic plans (1955, 1967, 1969); CADD drawing (5/2000); Site visits (2002, 2005).

Notes:
Task letters refer to sections in Chapter 2 and numbers refer to App. A. Location and scale of features are approximate. Drawn by Killion, OCLP.

Plant Legend:

20	Plant number
●	Historic, existing
○	Historic, missing
□	Non-historic existing
◇	Undetermined existing
x	Undetermined missing

Refer to text for specific treatment recommendations



C2-1.
Reestablish catalpa fenceline in eastern pasture

F2-3.
Stabilize well and pump

F2-3.
Stabilize Ritchie fountain

F2-3.
Replace Nelson water bowl

E2-1.
Reconstruct bank barn

F2-3.
Clear vegetation from concrete trough

F2-3.
Replace Nelson water bowl

C-5.
Manage growth of stream corridor vegetation to enhance historic views

D2-3.
Replace culvert bridge

D1-4.
Regrade path between Farms #1 and #2; replace mulch with compacted aggregate/clay/sand tread

F2-4.
Repair and replace damaged or missing utility poles

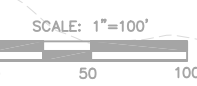
F2-1.
Replace cast iron bench with redwood bench

D1-4.
Regrade path between Farms #1 and #2; replace mulch with compacted aggregate/clay/sand tread

D2-1.
Widen sidewalk in conjunction with making the farmhouse accessible

F2-2.
Paint concrete tanks, doors, and pipes brown; possibly add fill

House plantings (#s 1-36)
(See Chapter 2 and Appendix A)



**Treatment Plan
Farm #3: 2006**

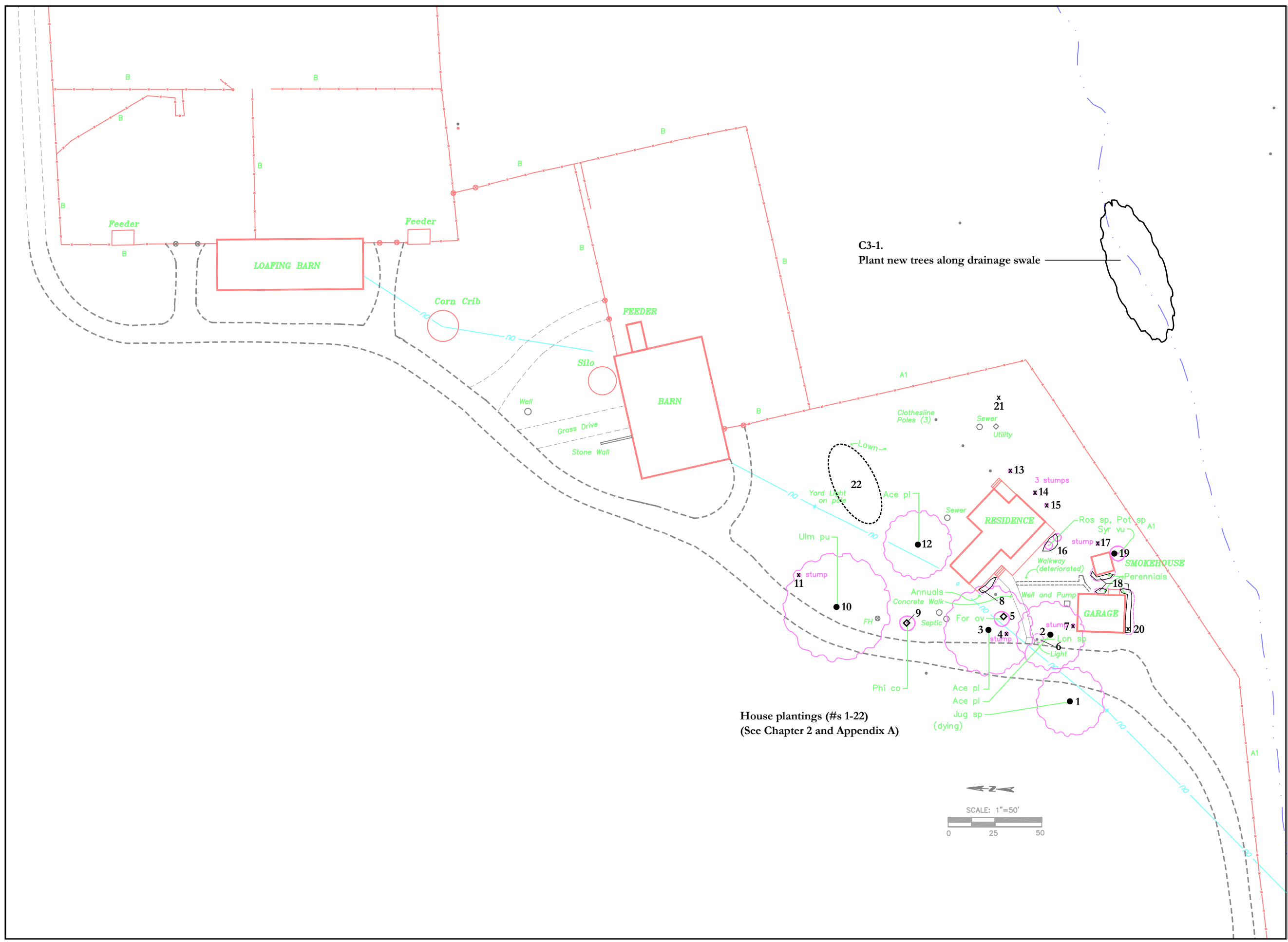
National Park Service
Olmsted Center for
Landscape Preservation

Sources:
Historic plans (1955,1967,
1969); CADD drawing
(5/2000); Site visits (2002,
2005).

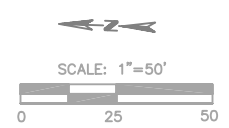
Notes:
Task letters refer to
sections in Chapter 2 and
numbers refer to App. A
Location and scale of
features are approximate.
Drawn by Killion, OCLP.

Plant Legend:

□ 20	Plant number
●	Historic, existing
○	Historic, missing
□	Non-historic
□	existing
◇	Undetermined
□	existing
□ x	Undetermined
□	missing
□	Refer to text for specific treatment recommendations



House plantings (#s 1-22)
(See Chapter 2 and Appendix A)



Cultural Landscape
Report for
Eisenhower
National Historic
Site

**Treatment Plan
Redding Farm: 2006**

National Park Service
Olmsted Center for
Landscape Preservation

Sources:
Historic plans (1955, 1967,
1969); CADD drawing
(5/2000); Site visits (2002,
2005).

Notes:
Task letters refer to
sections in Chapter 2 and
numbers refer to App. A
Location and scale of
features are approximate.
Drawn by Killion, OCLP.

Plant Legend:

20	Plant number
●	Historic, existing
○	Historic, missing
□	Non-historic existing
◇	Undetermined existing
x	Undetermined missing

Refer to text for specific
treatment recommendations

