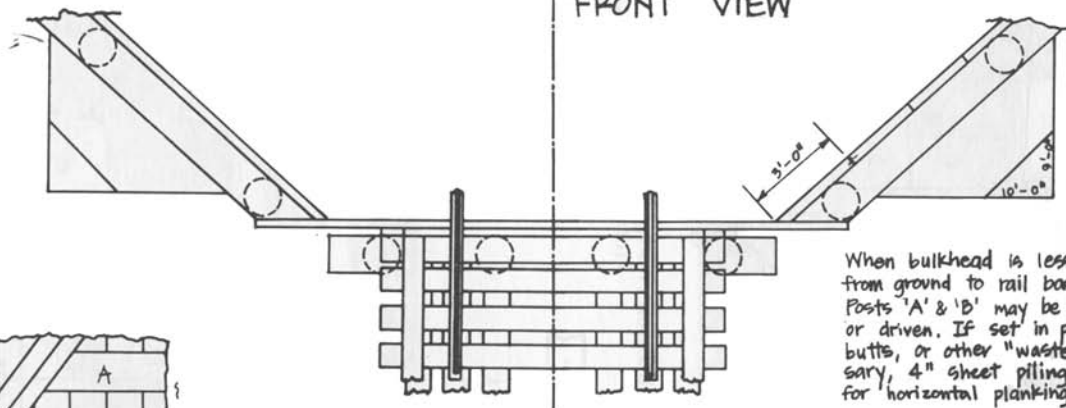
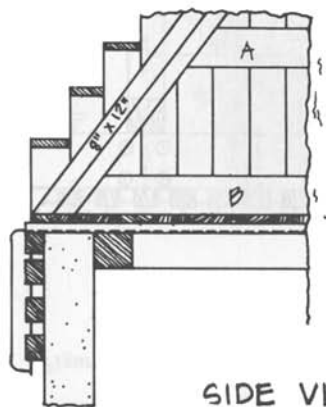


FRONT VIEW



TOP VIEW

When bulkhead is less than 7 feet high from ground to rail base, omit wing piles. Posts 'A' & 'B' may be either set in place or driven. If set in place, use pile tips, butts, or other "waste" timber. When necessary, 4" sheet piling is to be substituted for horizontal planking.



SIDE VIEW

WINGED BULKHEAD  
FOR STRINGER TRESTLE  
SOUTHERN PACIFIC CO.  
COMMON STANDARDS

SCALE:  $\frac{1}{4}'' = 1'-0''$