

HIGH SCHOOL & PARK AREA

HOSPITAL

PROTECTIVE ZONE

PROTECTIVE ZONE

SCHOOL

SCHOOL

RESERVED

PARKING

PARKING

RESERVED

RIGHT OF WAY LINE

COMMERCIAL

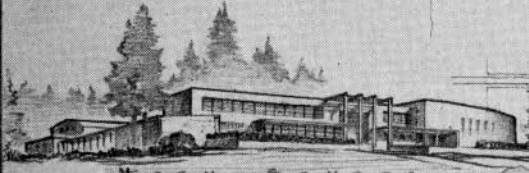
CENTER

HIGHWAY

RIGHT OF WAY LINE

RESERVED AREA

INDUSTRIAL ZONE



HIGH SCHOOL

U.S. DEPARTMENT OF THE INTERIOR - NATIONAL PARK SERVICE
ALASKA HIGHWAY LAND PLANNING SURVEY

PLAN FOR AN ALASKAN COMMUNITY



GRAPHIC SCALE

MAY, 1944. DESIGNED BY AUGEL. DRAWN BY KIMBLE DOTY. DRAWING NO. LPSAH, 7001