

Yosemite National Park YOSE 229677, Rehabilitate Tuolumne Meadows Campground (TMC)



Figure 1: Restoration and delineation of existing camp sites



Figure 2: Example of existing campsite

YOSE 229677, Rehab TMC

Brief Description:

The campground is a major visitor destination. This project will relocate campsites and roads out of the floodplain, add 2 restrooms, formalize campsites, improve the trail system, upgrade the amphitheater, rehab 8 historic restrooms, restore part of the river's edge, and overhaul water and wastewater lines. The design will retain the current capacity of 329 camp sites. Work to be completed over 2-3 construction seasons due to winter shut down.

Location:

Yosemite National Park, east side of park along Tioga Road, in the high country

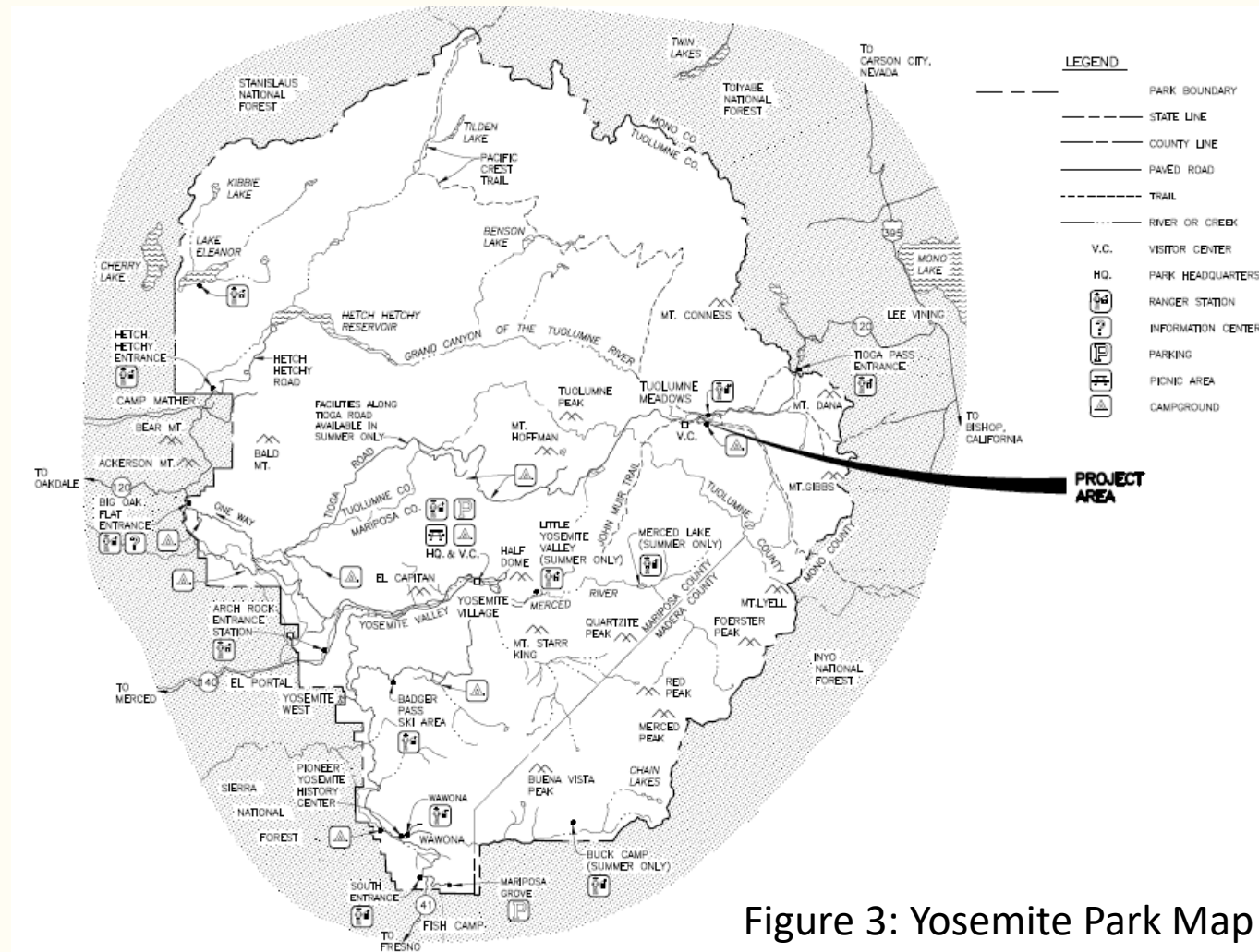


Figure 3: Yosemite Park Map



YOSE 229677, Rehab TMC

- Estimated Price >\$10M
- Design & Construction Method
Design – Bid – Build
- Procurement Method
To be Determined

North American Industry Classification

237990, Other Heavy and Civil Engineering Construction

- Schedule
 - Construction Solicitation Date:
June 2021
 - Construction Award Date:
September 2021
 - Period of Performance:
Through 2024

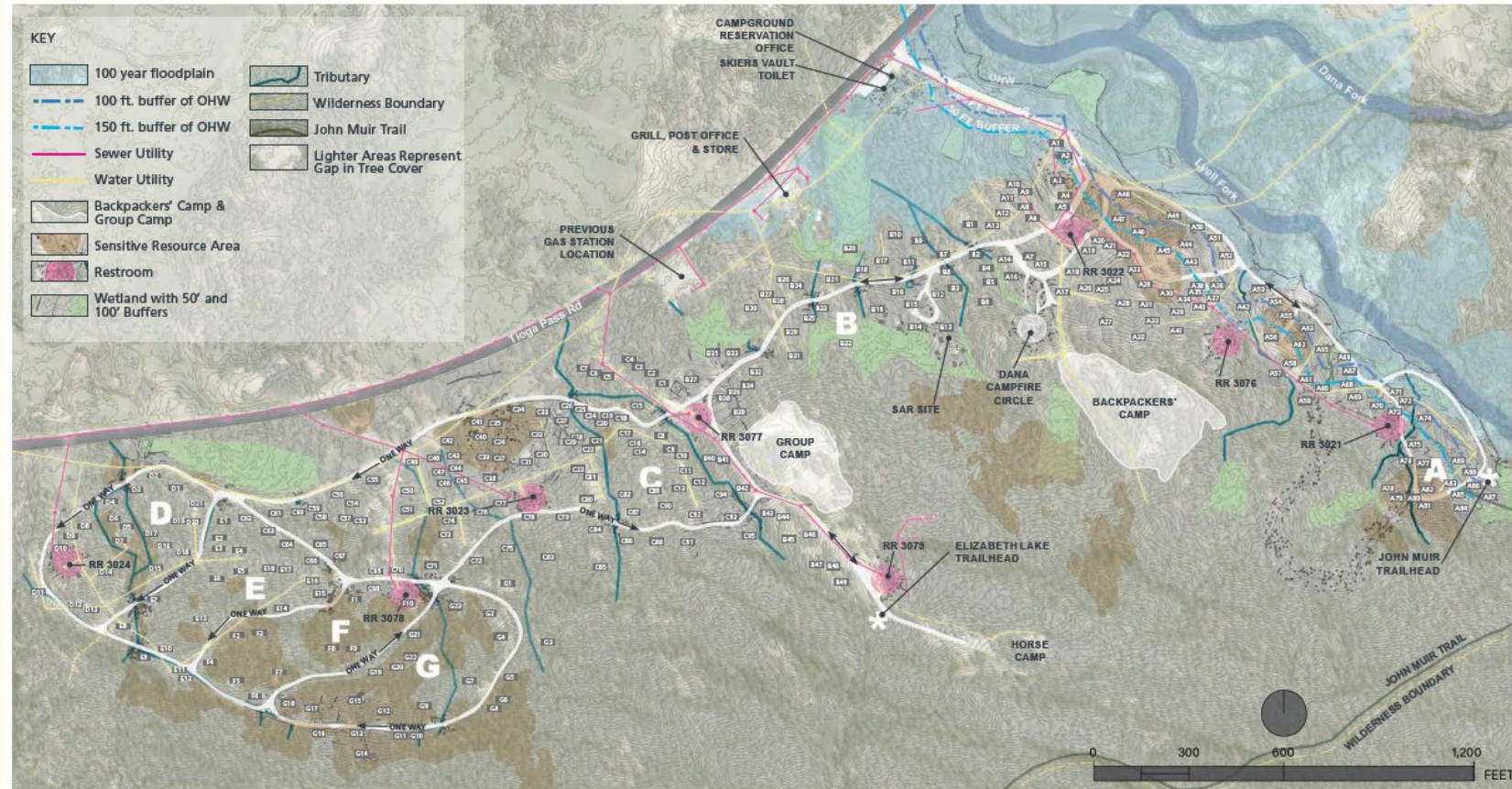


Figure 4: Tuolumne Meadows campground existing conditions map

YOSE 229677, Rehab TMC

- Historic campground with historic restrooms
- Sensitive ecological and cultural areas to work around
- At 8,600 ft., closed for construction between October and May with 8-10 feet of snow. The construction season is typically 5-6 months per year.
- Fire season impacts unknown
- Other ongoing park projects in the area, such as Tioga road construction



Figure 5: Winter conditions



Figure 6: Existing historic restroom

Thank you



Figure 7: Tuolumne Meadows Area