



FHWA-Delivered Transportation Projects

Blue Ridge Parkway

Colonial National Historical Park

Crater Lake National Park

Great Smoky Mountains National Park

Natchez Trace Parkway

Yellowstone National Park





Rehabilitate Sections of Blue Ridge Parkway in Virginia

- Brief Description

Rehabilitate and resurface sections of the Blue Ridge Parkway including slope stabilization, resurfacing, edge erosion rehabilitation, pavement marking, crack sealing, light pavement patching, signage, installation of geogrid pavers, shoulder stabilization with aggregate topsoil and turf establishment, stone curb removal and resetting, asphalt sidewalk reconstruction, guardrail and stone guardwall repair and reconstruction, inspecting and evaluating culverts, headwalls, inlets, ditches, and outfalls for needed cleaning, reconditioning and replacement.

- Location: Blue Ridge Parkway, Virginia
- Estimated Price: More than \$30M
- Anticipated design-build award in fall of 2022





Rehabilitate Sections of Blue Ridge Parkway in North Carolina

- Brief Description

Rehabilitate and resurface sections of the Blue Ridge Parkway including slope stabilization, resurfacing, edge erosion rehabilitation, pavement marking, crack sealing, light pavement patching, signage, installation of geogrid pavers, shoulder stabilization with aggregate topsoil and turf establishment, stone curb removal and resetting, asphalt sidewalk reconstruction, guardrail and stone guardwall repair and reconstruction, inspecting and evaluating culverts, headwalls, inlets, ditches, and outfalls for needed cleaning, reconditioning and replacement.

- Location: Blue Ridge Parkway, North Carolina
- Estimated Price: More than \$25M
- Anticipated design-build award in fall of 2022



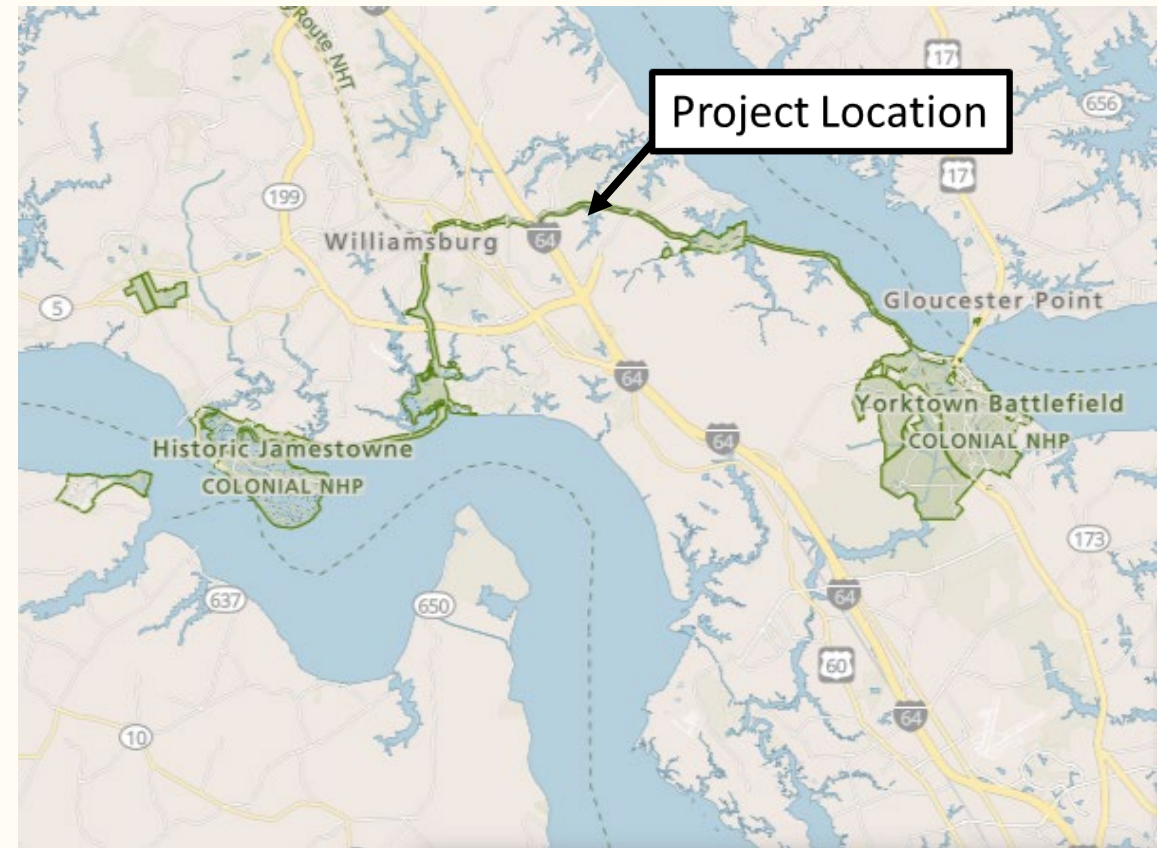


Rehabilitate Sections of the Colonial Parkway

- Brief Description

Repair approximately 10 miles of the Colonial Parkway including replacing exposed aggregate concrete pavement and curbs; patching asphalt pavement; rehabilitating bridges; rehabilitating the Williamsburg tunnel to include safety upgrades; repairing culverts and historic brick headwalls; reconditioning shoulders and ditches; replacing steel-backed timber guardrails; pavement markings; traffic signs; and installing stormwater management systems.

- Location: Yorktown/Jamestown, VA
- Estimated Price: More than \$100M
- Design-build start in spring of 2023



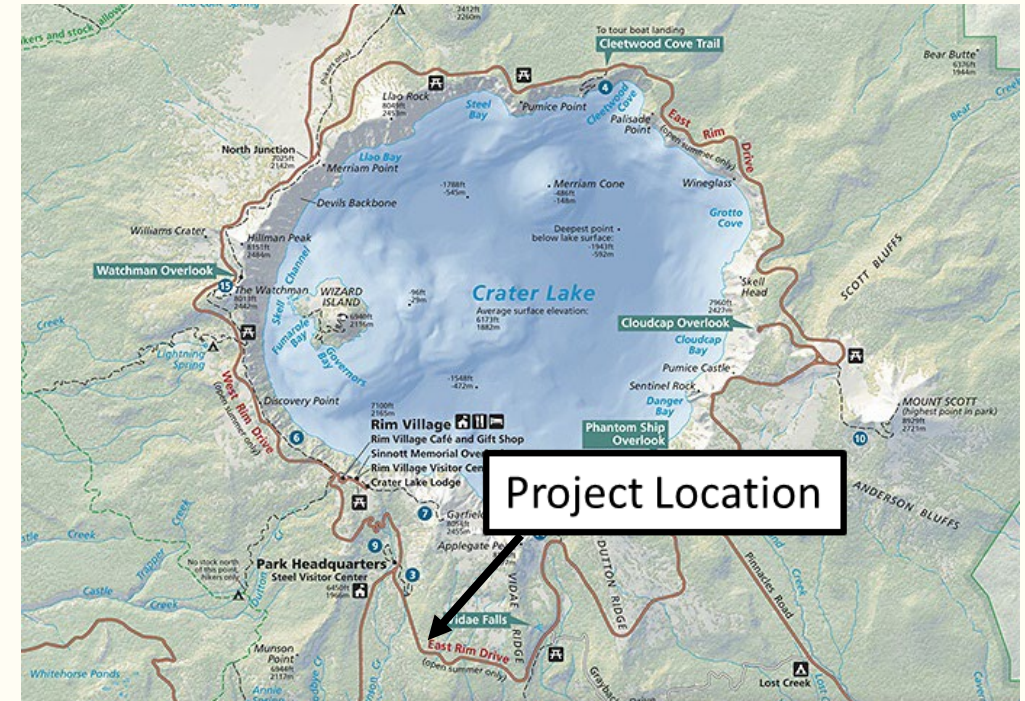


Rehabilitate Sections of the East Rim Drive at Crater Lake National Park

- **Brief Description**

This project will improve approximately 19 miles of roadway with a combination of pavement overlays and full depth pavement rehabilitation. Guard wall repair will be completed on several historic rock walls and will rehabilitate a portion of road pavement on the Cloudcap Spur Road. All associated parking areas along the East Rim Drive will be rehabilitated with markings, curb cuts, accessible walkways, and overlooks that comply with ABAAS.

- Location: Crater Lake, Oregon
- Estimated Price: More than \$40M
- Construction start in summer of 2023



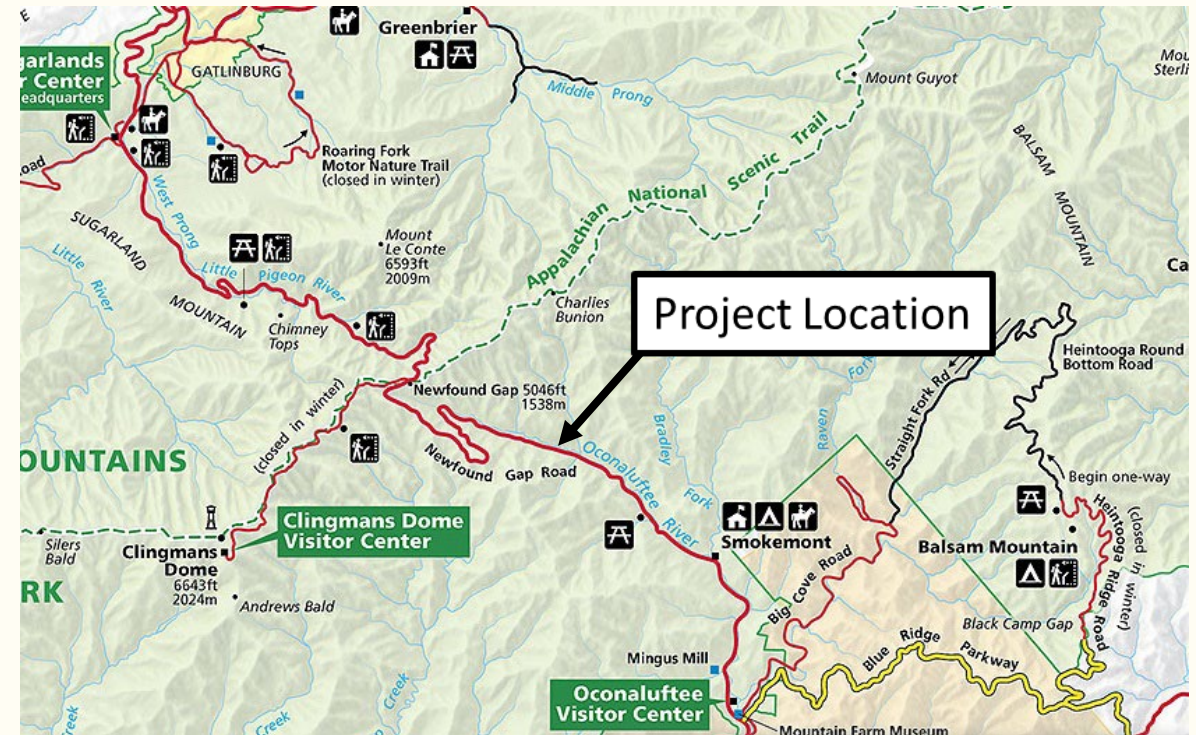


Rehabilitate Park Roads and Road Structures at Great Smoky Mountains National Park

- **Brief Description**

This project includes pavement preservation on several roads, deck replacement and miscellaneous repairs on the Noland Creek Bridge, and rehabilitation of Newfound Gap Road including repair of guard walls, stone curb, drainage structures, roadside turf ditches, asphalt and stone ditches, reseeding shoulders, pavement markings, and road signs.

- Location: Gatlinburg, Tennessee
- Estimated Price: More than \$20M
- Construction start in winter of 2023





Rehabilitate Sections of the Natchez Trace Parkway

- **Brief Description**

This project will improve approximately 50 miles of the Natchez Trace Parkway, including multiple public access routes and parking lots. The work includes surface milling and base/subgrade improvements, new asphalt base and surface courses; sealing existing bridge joints; installing audible pavement markings and safety edges; repairing culverts; repairing bridges; and accessibility improvements to parking areas.

- Location: Tupelo/Jackson, Mississippi
- Estimated Price: More than \$100M
- Anticipated design-build award in winter of 2023



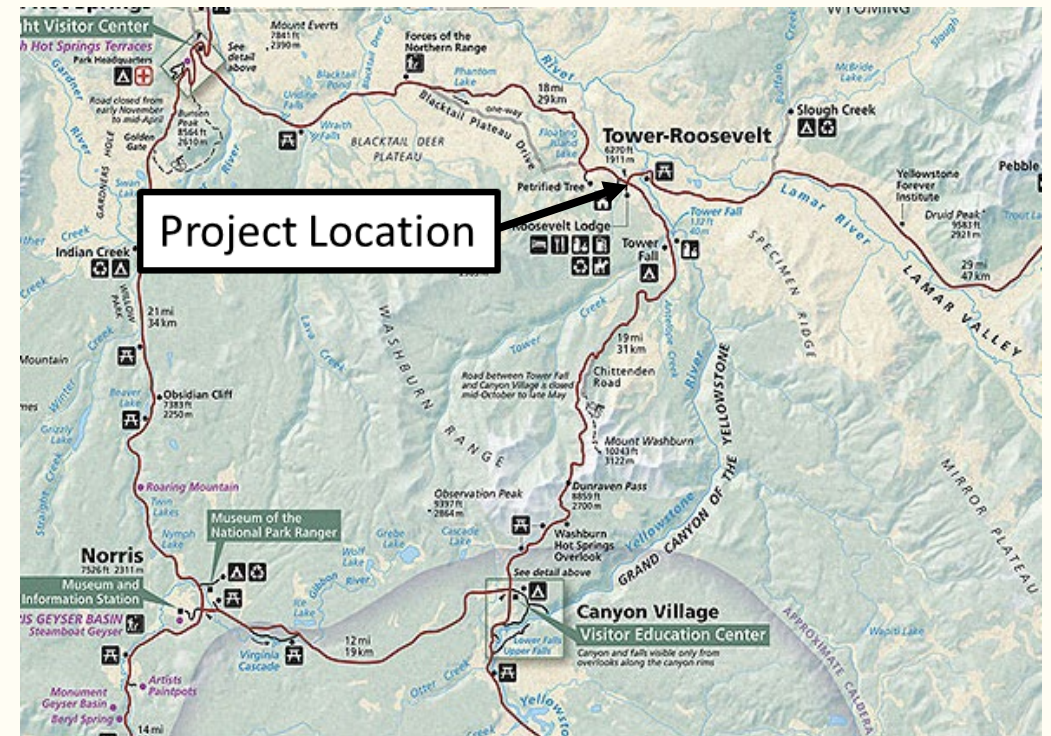


Replace the Yellowstone River Bridge

- Brief Description**

This project will replace the 604 linear foot, structurally deficient, steel girder Yellowstone River Bridge between Tower Junction and the Yellowstone River Picnic area with a new steel girder bridge. Work will include realignment of the approach roads in the vicinity of the bridge.

- Location: Yellowstone, Wyoming
- Estimated Price: More than \$70M
- Construction start in fall of 2022





Contacts

For Blue Ridge Parkway, Colonial NHP, Great Smoky Mountains NP, and Natchez Trace Parkway:

Eastern Federal Lands Highway Division (EFL)

Email: eflhd.contracts@dot.gov

Phone: (703) 404-6201

Address: 21400 Ridgetop Circle, Sterling, VA 20166

For Crater Lake and Yellowstone:

Western Federal Lands Highway Division (WFL)

Email: wflcontracts@dot.gov

Phone: (360) 619-7520

Address: 610 E 5th St., Vancouver, WA 98661

