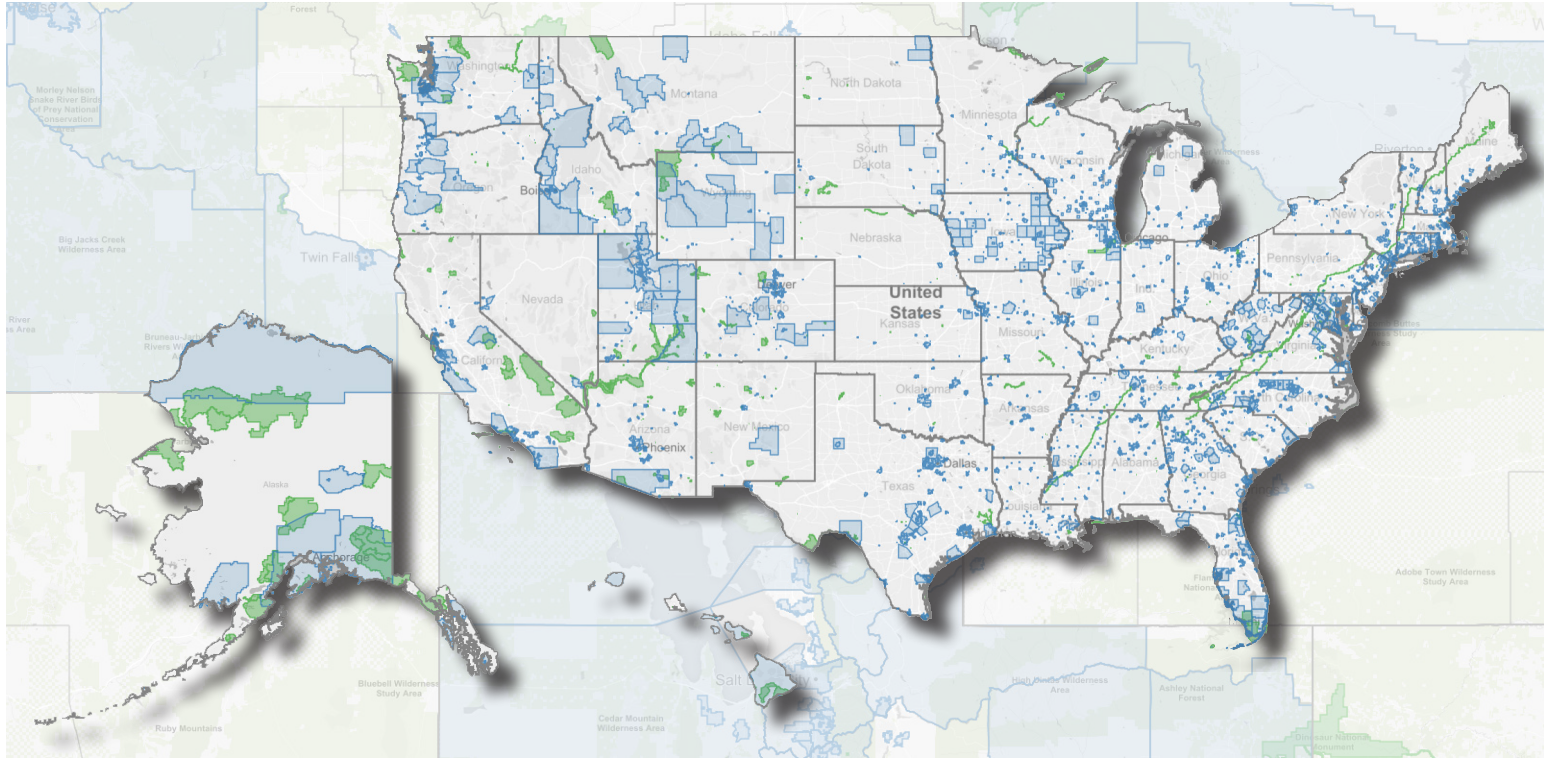




Gateway to Certified Local Governments

An ESRI™ Web Application



Map of Certified Local Governments (blue) and National Park Service sites (green) as of March 2019.

The *Gateway to Certified Local Governments* [Web Application](#) is a tool designed to facilitate resource management conversations by showing the connections between local governments, Federal lands, and historic resources.

What can I do with this web application?

Historic preservation in America began at the local level. In recognition of that, this web-based tool shows Certified Local Governments (CLGs), National Register listed sites and districts, and selected Federal lands, specifically national park units.

The *Gateway to Certified Local Governments* application displays data designed to spur conversation about resource management, particularly for gateway communities to national parks.

Gateway Communities are any municipalities within 60 miles of a national park site. Visitors often use these communities as “gateways” for their

visit to nearby parks—staying in their campgrounds or hotels, eating meals in town, and engaging with cultural and natural resources that connect back to the park.

As CLGs undertake historic preservation projects, partnerships with park staff and leadership can offer opportunities to work together to preserve the special places and stories of American history.

[Access the application](#) and other tools at www.nps.gov/stlpg under the “HPF In Action” tab.

For more information on our programs, please visit www.nps.gov/stlpg.