

Preservation Workshops

# Brick Earth Stone Timber

# 2024

Historic Preservation  
Training Center

.....  
National Park Service



# Frequently Asked Questions

## What is the BEST Preservation Workshop Series?

The BEST Preservation Workshop Series instructs students of all levels in the preservation of traditionally built historic resources using problem-based and hands-on learning. Participants should be prepared to think critically, make mistakes, and experiment – both physically and mentally – with materials and concepts at the workshop.

## Who can take a course?

Unless otherwise noted, workshops are open to anyone who is interested: federal, state, and local government employees; private sector contractors, consultants, architects, and design professionals; students; nonprofit employees; and homeowners.

## What is the cost per course?

Tuition costs vary between workshops. See individual workshop page for tuition. Tuition is now collected at time of registration. Full refunds are available up to 30 days before the workshop.

## Are scholarships available?

Partial scholarships offered through the Facilities Workforce Career Academy (FWCA) are available. If interested, fill out the following form: <https://forms.office.com/g/uK8WCSeXPF>

## Who do I talk to about an accommodation?

If you are a person with a disability and you need accommodations, please contact us after you have registered and at least 3 weeks before the workshops at (307) 739-3571 or [BEST\\_preservation@nps.gov](mailto:BEST_preservation@nps.gov).

## Is there lodging at White Grass Ranch?

Workshops in Grand Teton National Park include an option for shared lodging at White Grass Ranch, a rehabilitated historic dude ranch that serves as our training facility in the park. Lodging fees start at \$125/night and are collected by a third party and are separate from tuition. Rooms are on a first-come, first-served basis.

## Who do I contact to become an instructor?

We are offering “Beyond Hands-On Instructor Training” in partnership with Toponexus. See page 38.

## I have a preservation project. Can BEST help?

BEST workshops cannot be used to complete project work. But a new program, called Training Wheels, can help. See page 40.

# Registration

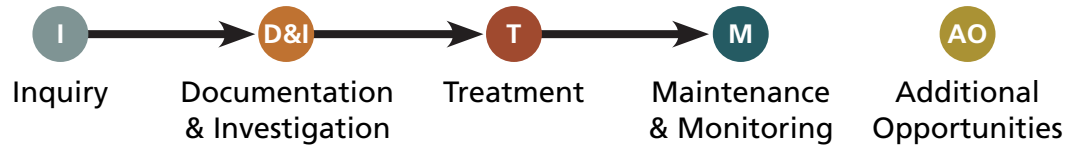
New for 2024, we have streamlined our registration process thanks to our partner, The Campaign for Historic Trades. You will need to create an account to register for BEST workshops. BEST Workshops can be found on the website’s “Catalog” page. Please note that the email used to create the account will be the email where all correspondence for the workshop is sent. Visit: [learn.historictrades.org](http://learn.historictrades.org)

## Program Sponsors and Supporters



# Course Progression

BEST workshops build on one another, following the natural progression of a historic preservation project. Illustrated below, this structure identifies major categories that take a project from concept to reality, and from design to implementation.



## Inquiry

Students learn the basics of historic preservation principles and standards. These workshops are strongly recommended for all students before taking more advanced courses.

## Documentation & Investigation

Students learn how to research historic resources and record existing conditions in the field, as well as practice problem-solving strategies for identifying and understanding deterioration problems and quantifying their potential impact.

## Treatment

Students explore building technology, condition assessment, treatment, and conservation science of major traditional building materials. Treatment workshops are hands-on and split between the classroom and the field.

## Maintenance & Monitoring

Students learn the methods and best practices for continued stewardship of historic resources after their preservation, including how to evaluate treatments, write and follow maintenance and lifecycle plans, and bring historic resources into asset management programs.

## Additional Opportunities

Two additional learning opportunities are offered through BEST that don't fall into the course progression. One is for students interested in becoming an effective instructor teaching preservation topics, the other is for project managers who require specific project-related skills for their team to execute a current preservation project.

# Workshops

Course Title	Location	Dates	Page
<b>Inquiry</b>			
Guiding Principles for Field-Based Historic Preservation	Minidoka National Historic Site	May 14–16	11
	Grand Teton National Park	June 4–6	
	Grand Canyon National Park	August 6–8	
	Acadia National Park	October 15–17	
	Joshua Tree National Park	November 5–7	
<b>Documentation and Investigation</b>			
Defining the Problem: Diagnosing Historic Building Deterioration	Not offered in 2024; check back in 2025.		13
Thinking Through Water, Air, and Temperature Issues in Historic Structures	Grand Teton National Park	August 26–29	15
<b>Treatment</b>			
Wood and Eastern Log Preservation and Repair	Guilford Court-house National Military Park	March 25–29	17

Course Title	Location	Dates	Page
<b>Treatment</b>			
National Cemetery Preservation	Stones River National Cemetery	April 9–11	19
Pre-Contact Masonry Preservation and Repair	Wupatki National Monument	April 29 - May 3	21
Brick Masonry Preservation and Repair	Gulf Islands National Seashore	May 20–24	23
Beginning Wood and Western Log Preservation and Repair	Yosemite National Park	June 3–7	25
Dry-Stone Masonry Preservation and Repair	Zion National Park	June 10–14	27
Women’s Beginning Wood and Western Log Preservation and Repair	Grand Teton National Park	June 24–28	29
Beginning Historic Wood Window Preservation	Grand Teton National Park	July 8–11	31
Advanced Western Log Preservation and Repair	Grand Teton National Park	August 19–23 September 16–20	33
Earthen Architecture Preservation and Repair	Fort Davis National Historic Site	October 21–25	35
Advanced Wood Window Repair	Frederick, MD	October 28 - November 8	37



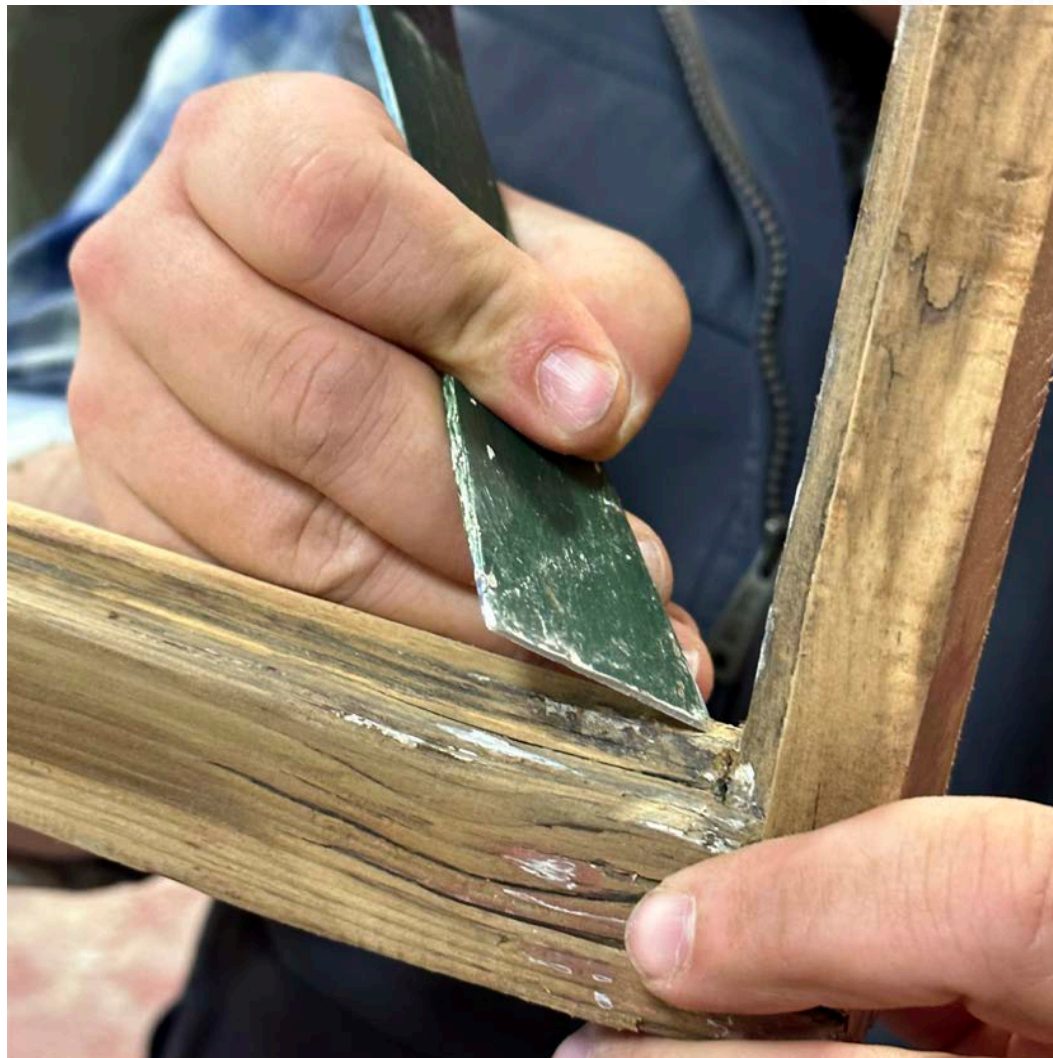
Course Title Location Dates Page

## Maintenance & Monitoring

Check back in 2025 for classes.

### Additional Opportunities

Beyond Hands-On Instructor Training	Grand Teton National Park	June 10–13	39
	Boston, MA	October 7–10	
Training Wheels			41





# Guiding Principles for Field-Based Historic Preservation

Minidoka National Historic Site May 14–16  
Grand Teton National Park June 4–6  
Grand Canyon National Park August 6–8  
Acadia National Park October 15–17  
Joshua Tree National Park November 5–7

## Instructors

<b>Julie McGilvray</b>	<i>Program Manager, Preservation Services &amp; Regional Historical Landscape Architect</i>	<b>Lisa Sasser</b>	<i>NPS Emeritus, Regional Facility Management Specialist Northeast Regional Office</i>
<b>Grant Cosby</b>	<i>Historical Architect Alaska Regional Office</i>	<b>Blaise Davi</b>	<i>NPS Emeritus, Program Manager, Northeast Regional Office</i>
<b>Jessica Bender</b>	<i>Training Administrator Historic Preservation Training Center</i>	<b>Becky Cybularz</b>	<i>Historical Architect Historic Preservation Training Center</i>

Guiding Principles for Field-Based Historic Preservation is ideal for field personnel who work directly on historic structures and/or cultural landscapes and seek to feel more empowered when making historic preservation treatment decisions. Participants will learn how to make preservation treatment recommendations using national standards and guidelines. Through case studies, discussions, and hands-on activities, participants will learn how to apply fundamental historic preservation concepts in developing treatment recommendations.

## Tuition

\$450 General participant  
\$50 Student (at least half time in an accredited institution)



# Defining the Problem: Diagnosing Historic Building Deterioration

Not offered in 2024; check back in 2025.

## Instructors

**Michael C Henry** *PE, AIA*  
*Watson and Henry Associates*

**Michael P Schuller** *PE*  
*Atkinson-Nolan and Associates, Inc*

Treatment of any historic resource is only successful if the underlying causes of deterioration have been addressed. Often this process is rushed or overlooked in favor of immediate action, which can result in larger problems and higher costs. In this workshop, students examine historic structures and record conditions on a site-wide scale to identify the root causes of building failure. Rather than learn prescriptive answers to common issues, participants work through observed problems in small groups and hypothesize what underlying issues are affecting the resource and why. Taking this a step further, trainees also design ways to test their hypotheses, learn about different options for non-destructive evaluation (NDE), and experiment with using NDE techniques in the field.

## Tuition

Not offered in 2024; check back in 2025.



# Thinking Through Water, Air, And Temperature Issues in Historic Structures

Grand Teton National Park August 26–29

## Instructor

**William A Turner** *MS, PE, LEED AP, CEO*  
*Turner Building Science & Design LLC*

**Erin Gibbs** *Training Specialist*  
*Historic Preservation Training Center*

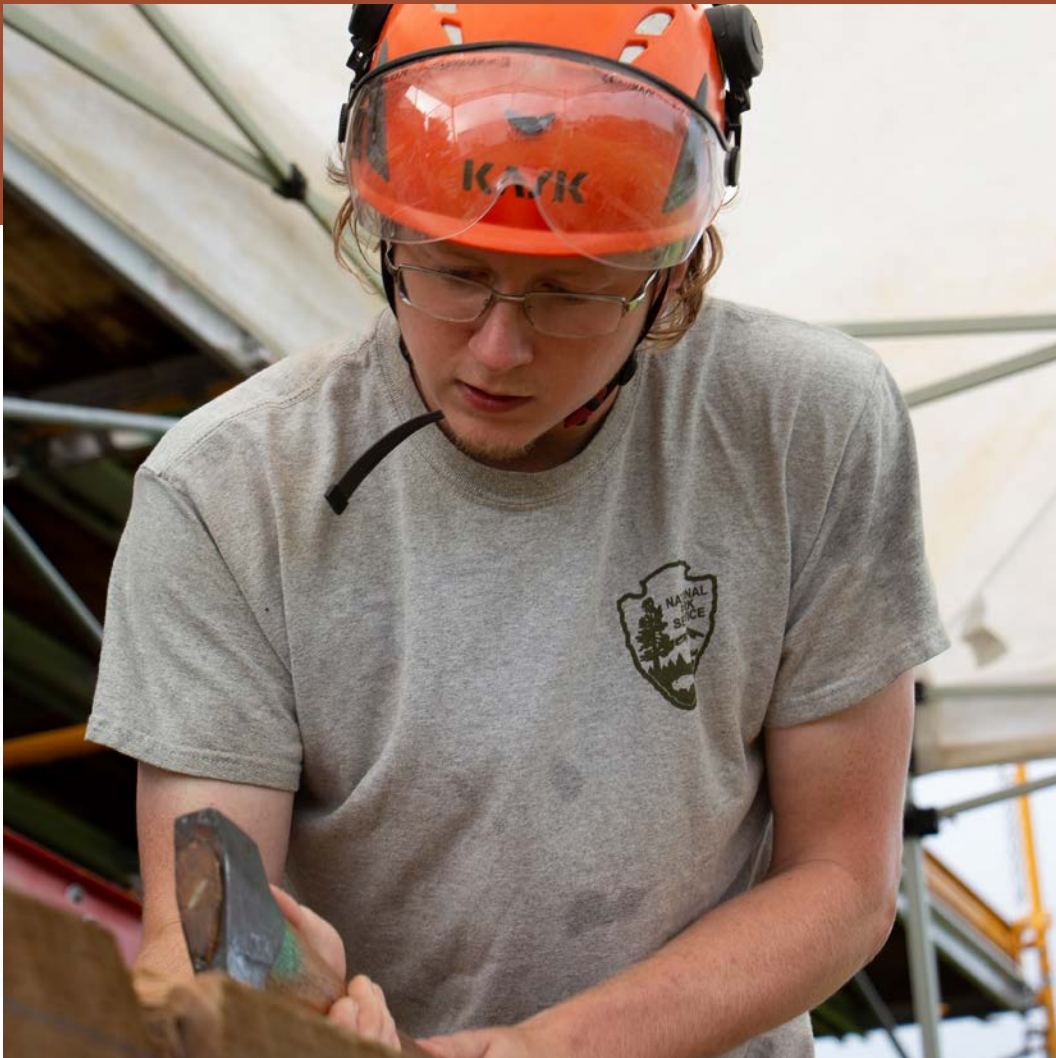
The interaction between air flow, water vapor, liquid water, and heat (or lack of heat) in and around a historic building directly relate to its longevity, performance, and comfort. When these interactions are altered through a change in materials, use, or design, unintended damage can result. In *Thinking Through Water, Air, and Temperature Issues*, students explore and experiment with how these three elements behave and influence each other in historic structures and how to manage them to maintain the health and use of buildings. Through discussion, labs, field exercises, and case studies, participants identify building deterioration as a function of water, air, and heat movement; solve problems caused by improper treatments; and evaluate options for retrofit in keeping with NPS preservation standards. Participants are encouraged to bring air, water, and heat issues from their home regions for discussion and group problem solving.

## Tuition

\$600 General participant  
\$50 Student (at least half time in an accredited institution)







# Wood and Eastern Log Preservation and Repair

Guilford Courthouse National Military Park March 25–29

## Instructors

**Steve Jenkins** *Exhibit Specialist*  
*Historic Preservation Training Center*

**Marcie Markley** *Training Specialist*  
*Historic Preservation Training Center*

**Mike Cardis** *Exhibit Specialist*  
*Historic Preservation Training Center*

Well before any log cabins were built in the American West, log houses were commonplace in the Mid-Atlantic states and Appalachia. These structures, built using traditions and craft skills of the European immigrants who settled in the region, differ from western log cabins in many ways, from how logs are hewn and notched to how structures are laid out and finished. Because of these differences, they require a different approach to their preservation compared to their American West counterparts. In Wood and Eastern Log Preservation and Repair, students will experiment with basic wood science concepts before documenting and assessing log structures on site. They will then practice basic log repair techniques, using traditional tools to hew logs, scribe and cut notches common in Eastern log construction, and replace chinking and daubing. There will be discussion and group work that also cover the evolution of the eastern log house, developing treatment plans, and scoping and specifying projects.

## Tuition

Rescheduled from 2023; registration is full. Check back in 2025.



# National Cemetery Preservation

Stones River National Cemetery April 9–11

## Instructors

Katherine Wonson

*Training Manager  
Historic Preservation  
Training Center*

Susan Dolan

*Program Manager  
Park Cultural Landscape  
Program*

Jason Church

*Conservator, National  
Center for Preservation  
Training and Technology*

Kiel Rommel

*Exhibit Specialist,  
Historic Preservation  
Training Center*

Keith Park

*Horticulturist, Arborist,  
John Muir National  
Historic Site*

NPS national cemeteries are nationally significant cultural landscapes that contain historic structures, archaeological resources, ethnographic resources, and museum collections. In this workshop, students will learn and practice the specialized techniques required to care for these unique resources' stewardship, with emphasis on performing preservation maintenance on masonry walls, monuments, grave markers, trees, shrubs, and turf. Trainees can be prepared to participate in activities that cover the following topics: preservation principles; condition assessments; cleaning masonry, monuments, and grave markers; re-pointing masonry walls; pruning trees and shrubs; and decompaction and over seeding turf.

## Tuition

\$450 General participant

\$50 Student (at least half time in an accredited institution)

Free for NPS national cemetery employees.

## Registration

General participants and students: [learn.historictrades.org](https://www.nps.gov/learn/historictrades)

[NPS national cemetery employees registration](https://www.nps.gov/learn/nationalcemeteries) (or scan the QR code)





# Pre-Contact Masonry Preservation and Repair

Wupatki National Monument April 29 - May 3

## Instructors

Frank Matero

*Chair of the Graduate Program in Historic Preservation, University of Pennsylvania*

Kelsey Vaughan-Wiltsee

*Archeologist, Flagstaff Area National Monuments*

Masonry structures require careful understanding of their materials, construction methods, conditions, and environment before any intervention is performed. Students in Pre-contact Masonry Preservation and Repair will explore these concepts, but with special emphasis on preservation at archaeological sites containing resources built prior to European contact in the Americas. Participants will explore and experiment with the properties, behaviors, and deterioration patterns related to mortars and masonry units commonly used at pre-contact sites. Working with experienced archaeologists, students will practice reading and documenting condition in the field and discuss when it is necessary to consult professional engineers or conservators. Trainees will work with masonry tools to repoint mortar joints and stabilize courses under the direction of experienced craftspeople and archaeologists in the field.

## Tuition

\$750 General participant

\$50 Student (at least half time in an accredited institution)





# Brick Masonry Preservation & Repair

Gulf Islands National Seashore May 20–24

## Instructors

**Mike Weibush** *Mason*  
*Historic Preservation Training Center*

**Scott Jones** *Exhibit Specialist*  
*Historic Preservation Training Center*

Historic brick masonry buildings are relatively simple construction systems, but their preservation requires a sound understanding of stone, brick, and mortars; their weathering; and how they function together as a system. Students attending Historic Brick Masonry Preservation and Repair will learn about these concepts and pair them with hands-on practice completing simple masonry repairs that involve matching and mixing mortars, repointing mortar joints, and stabilizing courses. In addition to learning about basic conservation science for masonry materials, students will also discuss and experiment with conducting conditions surveys, diagnosing root causes of deterioration, and determining treatment options in keeping with NPS preservation standards.

## Tuition

\$750 General participant  
\$50 Student (at least half time in an accredited institution)





# Beginning Wood and Western Log Preservation and Repair

Yosemite National Park June 3–7

## Instructors

Ron Anthony

*President and Wood Scientist  
Anthony & Associates*

Tim Green

*Lead Preservation Craft Trainer  
Historic Preservation Training Center*

Log structures are some of the most versatile, enduring, and widespread resources found in the United States. The Wood and Log Preservation and Repair workshop covers basic wood science and beginner log repair techniques to prepare trainees to care for these important buildings. Using the White Grass Ranch as a laboratory, students will start the workshop studying the basics of wood structure and deterioration. Trainees will then practice field investigation, condition assessment, and identification of root causes of deterioration in the field at a historic cabin. The second half of the week is focused on using traditional tools to scribe, saddle notch, and flatten logs – the basic techniques used in a variety of log repairs. Trainees can expect additional group discussions that explore historic log construction, project planning, and finishes.

## Tuition

\$750 General participant

\$50 Student (at least half time in an accredited institution)





# Dry-Stone Masonry Preservation and Repair

Zion National Park June 10–14

## Instructors

**Moss Rudley** *Superintendent  
Historic Preservation Training Center*

**Derek Beitner** *Exhibit Specialist  
Historic Preservation Training Center*

**Alan Ash** *Master Stonemason  
Ash Stone Masonry*

Dry-stone masonry - where stones are stacked on one another without the use of mortar – is one of the earliest building skills developed by humans and used for building shelters, fortifications, burials, structures, farm enclosures, trails, and roads. In national parks, this method of construction is commonly seen on historic trails, often as retaining walls made from local stone. Using the retaining walls on trails in Zion National Park as a laboratory, students in the Dry-Stone Masonry Preservation and Repair workshop will learn about and explore the behavior, condition, treatment, and maintenance of dry-stone masonry systems within a trails context. After experimenting with the material and physical properties of different stones, students will conduct condition assessments on trail resources in Zion to determine causes of deterioration and identify appropriate treatment approaches. Trainees will practice shaping and placing stones, as well as how to approach basic stabilization of dry-laid masonry systems.

## Tuition

\$750 General participant

\$50 Student (at least half time in an accredited institution)





# Women's Beginning Wood and Western Log Preservation and Repair

Grand Teton National Park June 24–28

## Instructors

Samantha Ritchie *Project Specialist*  
Grand Teton National Park

Erin Gibbs *Training Specialist*  
Historic Preservation Training Center

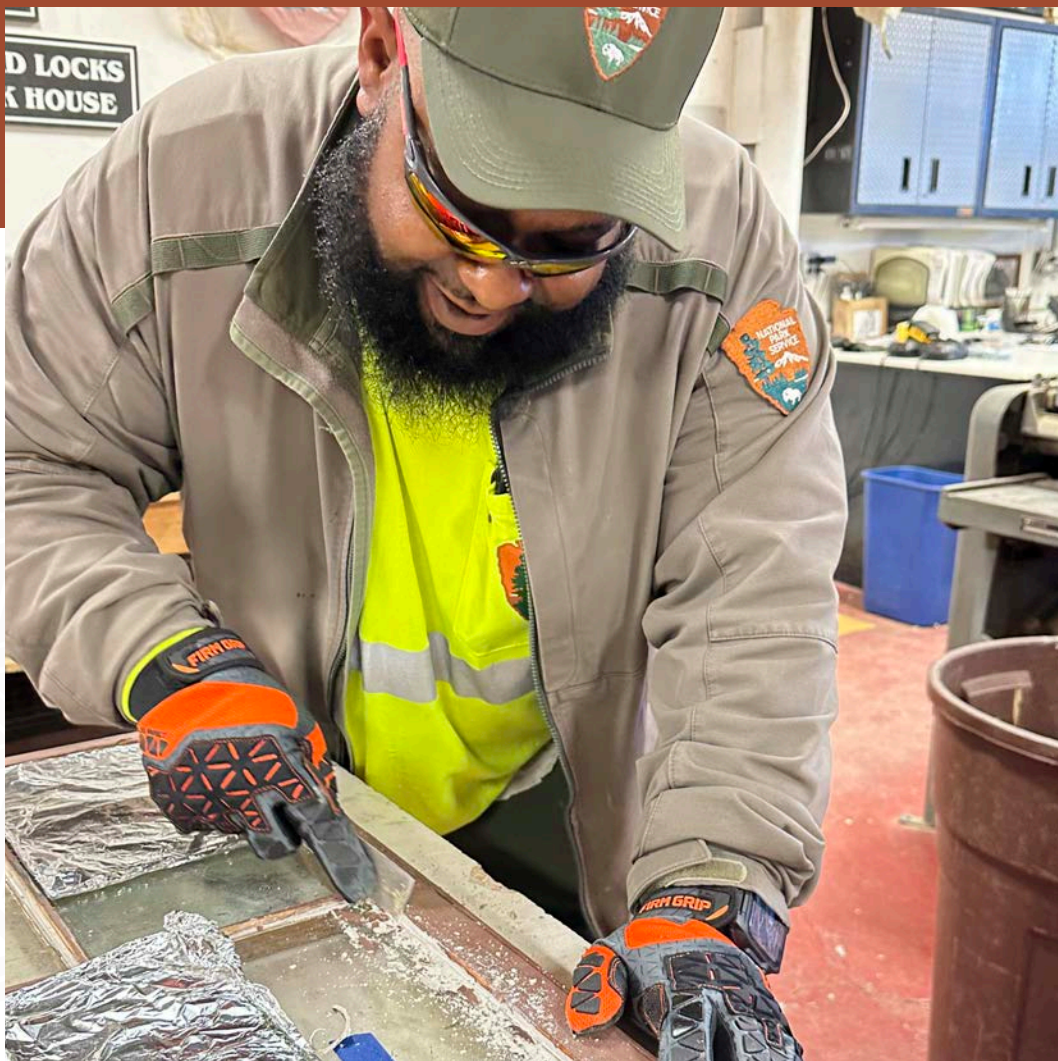
The Women's Beginning Wood and Western Log Preservation and Repair workshop follows the same curriculum as BEST's general Beginning Wood and Log Preservation Workshop and is open to women who prefer to learn in an all-female environment. Students in this workshop will learn about basic wood science and beginner log repair techniques common in the American West. They will explore wood structure, deterioration, and behavior before progressing to field investigation, condition assessment, and identification of root causes of deterioration. For the hands-on craft portion of the workshop, trainees will use traditional tools to scribe, saddle notch, and flatten logs – the basic techniques used in beginning log repair. Students will participate in group discussions and problem-solving activities that focus on historic log construction, project planning, and finishes.

## Tuition

\$750 General participant  
\$50 Student (at least half time in an accredited institution)







# Beginning Historic Wood Window Preservation

Grand Teton National Park July 8–11

## Instructors

Erin Gibbs *Training Specialist*  
*Historic Preservation Training Center*

Larry Waldrop *Supervisory Exhibit Specialist*  
*Historic Preservation Training Center*

In Beginning Historic Wood Window Preservation, participants practice the basics of window preservation, including documenting condition, stripping paint, preparing weathered wood, back-bedding and glazing, glass cutting, and painting. Trainees will also learn about and practice using degummed linseed oil products as a treatment system for glazing and painting wood windows. To compliment hands-on work, students will participate in discussions on why we preserve historic windows; options for increasing historic windows' energy efficiency; and how to apply the Secretary of the Interior's Standards for the Treatment of Historic Properties to window projects.

## Tuition

\$750 General participant  
\$50 Student (at least half time in an accredited institution)



# Advanced Western Log Preservation and Repair

Grand Teton National Park  
Grand Teton National Park

August 19–23  
September 16–20

## Instructors

Tim Green

*Lead Preservation Craft Trainer  
Historic Preservation Training Center*

In this workshop, students build on the knowledge and skills learned in the Beginner Wood and Log workshop, gaining a deeper understanding of how to lift and move log structures to replace deteriorated logs and make partial log repairs. Trainees use historic cabins at the Bar BC Ranch in Grand Teton National Park as a laboratory to engage and experiment with equipment, tools, and techniques necessary for stabilizing deteriorated log structures.

Lifting a building, replacing logs, and executing repairs are not a one-size-fits-all formula – students must be willing to problem-solve in the field under the supervision of an experienced log cabin preservationist. Trainees can expect to learn a mental and physical framework for moving log structures and executing appropriate treatments that can then be applied and modified for their own projects. Slow is fast for this workshop: students should prepare to work through problems in real-time, expect ebbs and flows in processes, and follow all safety procedures and guidelines.

Due to the advanced nature of this workshop, students must have basic log scribing, notching, and hewing skills. If you are interested in this class, send a brief description of your experience with log work to [best\\_preservation@nps.gov](mailto:best_preservation@nps.gov) and why this workshop is critical for your work at your park, organization, or agency.

## Tuition

\$750 General participant

\$50 Student (at least half time in an accredited institution)





# Earthen Architecture Preservation and Repair

Fort Davis National Historic Site    October 21–25

## Instructors

David W. Keller    *Owner & Manager  
Keller Consulting*

Joey Benton    *Designer  
SILLA*

Construction of architecture using earthen building materials is one of the oldest surviving building traditions in the world for many reasons. Adaptable, sustainable, and sophisticated, earthen architectural traditions have a long history in the arid Southwest that endures today. Caring for and preserving these resources can be challenging, as many of them do not conform to our contemporary expectations of what makes a material suitable for building and what its maintenance looks like. In this workshop, students will learn about the materials science and construction of earthen architecture, as well as experiment with building materials derived from soil such as adobes and earthen plasters and mortars. Participants will examine what deterioration looks like in earthen structures, determine root causes of condition, and think through stabilization measures. Lastly, students will practice small-scale repairs in the field, such as replacing adobes and applying earth plaster.

## Tuition

\$750    General participant  
\$50    Student (at least half time in an accredited institution)





# Advanced Wood Window Repair

Frederick, MD October 28 - November 8

## Instructors

Mark Segro

*Exhibit Specialist  
Historic Preservation Training Center*

Trevor Thomas

*Supervisory Exhibit Specialist  
Historic Preservation Training Center*

Open to students who have mastered beginning wood window preservation skills like documentation, re-glazing, and simple dutchman repairs, participants in Advanced Wood Window Repair will learn the woodworking skills necessary to practice more advanced and intensive repairs for rails, stiles, and muntins. This is a two-week workshop. During the first week, students focus on the fundamentals of woodworking, including materials selection, safe stationary power tool use, safe hand tool use, fundamentals of millwork, layout, and basics of joinery. Students then apply these skills in the second week of the workshop, where they practice more complicated dutchman repairs, joinery repairs, and partial or full component replacement.

October 28 - November 1: Fundamentals of Woodworking  
November 4–8: Advanced Window Repair

## Tuition

\$750 General participant

\$50 Student (at least half time in an accredited institution)





# Beyond Hands-On Instructor Training

Grand Teton National Park  
Boston, MA

June 10–13  
October 7–10

## Instructors

**Katherine Wonson** *Lead Historic Preservation Training Manager  
Historic Preservation Training Center*

**Molly Baker** *Owner  
Toponexus*

Are you interested in passing on your craft and trade knowledge but haven't had the opportunity to hone your teaching skills? HPTC has partnered with Toponexus to develop a collateral-duty instructor training program based on the "Beyond Hands-On Model" used in BEST workshops. "Beyond Hands-On" takes the traditional "hands-on" skills training approach and integrates it with problem solving and appreciation for historical craft and historic resources, or, as short-hand: hands-on, heads-on, and hearts-on learning. During this interactive workshop, students will be challenged to expand their teaching capacity with new skills, knowledge, and inspiration.

No matter what trade, no matter what the "classroom" looks like, the Beyond Hands-On learning model is universal, digestible, and customizable. This workshop is open to trades instructors, supervisors, mentors, park leads and/or training coordinators. Students in Beyond Hands-On Instructor Training will take a closer look at their own teaching toolbox to reconsider what's working and what's not. Trainees will gain new insights and usable Beyond Hands-On tools to apply to their own practice, and in doing so, will be a part of the movement that takes historic trades training to the next level with this fresh approach.

## Tuition

\$600 General participant  
\$50 Student (at least half time in an accredited institution)





# Training Wheels



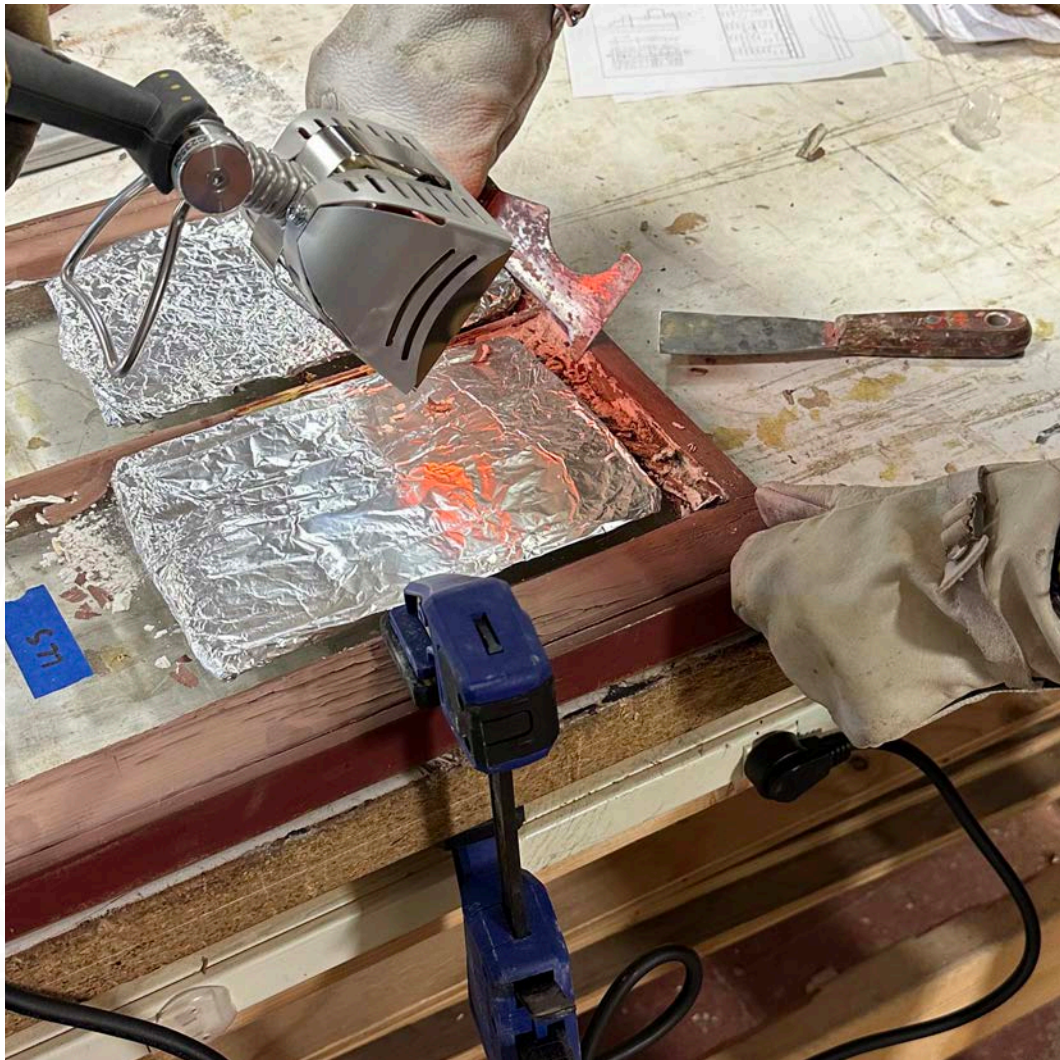
Do you need to train your project crew on a specific set of preservation skills for an upcoming project?

The Historic Preservation Training Center is partnering with The Campaign for Historic Trades to offer preservation trades skills training that is specific to an upcoming preservation project at a park or historic site. Under the guidance of The Campaign's preservation instructors, participants receive hands-on, project-based instruction that is catered specifically to the project needs. This instruction can range from tool use, technique, tool care, safety, material science, workflow considerations, and/or preservation approach. Once the project crew has shown competency in applying their newly learned skills (two to three weeks – project dependent), instructors leave the project site and are available remotely for follow up questions as needed.

Projects eligible for a Training Wheels experience have at least five employees who will be continuing to execute the project once the instructors leave. Training Wheels is not a vehicle through which to complete projects, rather, it is an opportunity to intensely train employees on the skills needed to complete current and future preservation projects. The project should have elements that are repetitive, require a specialized preservation trade to fill a "skills gap," and are predominantly cyclic in nature.

If interested, contact HPTC at [BEST\\_Workshops@nps.gov](mailto:BEST_Workshops@nps.gov) to see if the project is a good fit for Training Wheels. Our team will get you in contact with the Campaign for Historic Trades, who will then work with your staff to identify realistic training and project outcomes, provide an estimate, and execute the training. The park is responsible for all project materials and equipment and completing all compliance.







307-739-3571  
BEST\_Preservation@nps.gov