

WE COME HERE TO REMEMBER  
THOSE WHO WERE KILLED,  
THOSE WHO SURVIVED AND  
THOSE WHO CHANGED FOREVER.  
MAY ALL WHO LEAVE HERE KNOW THE  
IMPACT OF VIOLENCE. MAY THIS  
MEMORIAL OFFER COMFORT, STRENGTH,  
PEACE, HOPE AND SERENITY.

# VISIT THE MEMORIAL EXPERIENCE THE MUSEUM

The Outdoor Symbolic Memorial is a place of quiet reflection. The Memorial Museum is a place of amazing transformation. Each offers a unique insight into the events of April 19, 1995, but to truly experience this place of honor and hope, we strongly encourage you to visit both. In fact, the outdoor grounds will be more meaningful and memorable after experiencing the entire story of the bombing as presented in the Museum.

The Museum entrance is just north of the 9:03 Gate in the west end of the former Journal Record Building.



### Get our new app

Download the Memorial App to enhance your visit with tours and interactive content, search OKCNM in the App Store or Google Play.

Americans With Disabilities Act (ADA) compliant.

### Outdoor Interactives

Stop by one of three outdoor interactives to better understand the symbolic elements of the site located under Survivor Tree, the 9:01 Gate and near the entrance to the Museum.



### Murrah Plaza

Walk onto the original Murrah Plaza (located on 4th Street between Robinson & Harvey Ave.) and see a breathtaking view of the Memorial grounds.

### Group Information

Special pricing is available for school and leisure tour groups with advance reservations. For more group information, please call 405.235.3313, Monday through Friday, or log on to [OklahomaCityNationalMemorial.org](http://OklahomaCityNationalMemorial.org).



### Outdoor Symbolic Memorial

Open 24 hours a day, seven days a week  
There is no charge to tour the Memorial grounds.

### Memorial Museum

Open seven days a week. Ticket sales stop daily at 5 p.m. See Museum entrance for seasonal hours. Memorial Museum is closed Thanksgiving Day, Christmas Eve, Christmas Day and New Year's Day.

### Tickets

\$15 Adults, \$12 Seniors 62 +, \$12 Military with ID  
\$12 Students (Age 6 through college with ID)  
No charge ages 5 and under

Purchase your tickets online at [tickets.okcnm.org](http://tickets.okcnm.org)  
Group rates and programs available

### Location

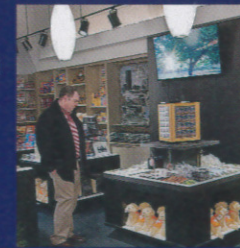
620 North Harvey Avenue  
Oklahoma City, Oklahoma 73102

Phone 405.235.3313  
Fax 405.235.3315  
Toll-free 1.888.542.HOPE (4673)



### Memorial Store

Don't forget to visit the Memorial Store on the lobby level for special gifts and keepsakes. Just outside the store, the Donor Recognition Gallery lists those who contributed to help build and sustain this nation's lasting tribute.



### Did you know?

The admission fee to the Museum helps pay for the operations and maintenance of the Oklahoma City National Memorial & Museum. All funds to operate and sustain the Memorial and Museum are raised through admission fees, Memorial Store sales, private fundraising, endowment earnings and the Oklahoma City Memorial Marathon.

The Oklahoma City National Memorial & Museum is owned and operated by the Oklahoma City National Memorial Foundation. The foundation does not receive any annual appropriations. The Memorial and Museum is an affiliate of the National Park System.

### Thank you for your support!

The Oklahoma City National Memorial & Museum is listed in the National Register of Historic Places.

Watch for our **NEW Learning Lab featuring STEM Educational Opportunities** coming in Fall 2015

# MEMORIAL & MUSEUM GUIDE

20<sup>th</sup> Anniversary

OKLAHOMA CITY  
NATIONAL MEMORIAL  
& MUSEUM



Check out the new exhibits in the Museum

[OklahomaCityNationalMemorial.org](http://OklahomaCityNationalMemorial.org)

# MEMORIAL MUSEUM

THE MEMORIAL MUSEUM IS AN INTERACTIVE LEARNING EXPERIENCE THAT TAKES YOU ON A CHRONOLOGICAL, SELF-GUIDED TOUR THROUGH THE STORY OF APRIL 19, 1995, AND THE DAYS, WEEKS AND YEARS THAT FOLLOWED THE BOMBING OF OKLAHOMA CITY'S ALFRED P. MURRAH FEDERAL BUILDING. THE STORY TRACKS THE REMARKABLE JOURNEY OF LOSS, RESILIENCE, JUSTICE AND HOPE.

## CHAPTER 1 – A DAY LIKE ANY OTHER

Experience a brief orientation video on *A Day Like Any Other* and begin to understand the Mission of the Memorial and Museum.



## CHAPTER 2 – HISTORY OF THE SITE

Discover the history of the neighborhood in and around the Murrah Building.

## CHAPTER 3A – A HEARING

Hear the official recording of an Oklahoma Water Resources Board meeting from April 19, 1995. The meeting, just across the street from the Murrah Building, starts at 9:00 a.m. A mere two minutes into the recording, you will hear the sound that changed our country forever.

## CHAPTER 3B – CONFUSION

Leave the confusion inside the Oklahoma Water Resources Board meeting to experience the chaos outside. Here, you'll see helicopter news footage of the ravaged building taken at 9:13 a.m. – the first images broadcast.

## CHAPTER 4A – CHAOS

Experience the first frantic minutes after the bombing through detailed artifact cases, murals and computer kiosks.



## CHAPTER 4B – SURVIVOR EXPERIENCES

See the chaos and the initial rescue response of the first hour-and-a-half after the bombing. A stirring video documents the scene and survivors tell their own stories. Interactive touch-screen computers provide more in-depth information.

## CHAPTER 5A – WORLD REACTION TO REPORTING TERRORISM

Step into a fast-paced media environment that shows news footage and special bulletins from around the globe about the bombing and hear from journalists who covered this story 24/7.

## CHAPTER 5B – RESCUE AND RECOVERY

Encounter the true face of rescue and recovery with incredible stories of trapped survivors, rescue workers, the medical community, construction volunteers and others. And amid the search for victims, something else is recovered — a key piece of evidence.

## CHAPTER 6 – WATCHING AND WAITING

Learn more about rescue and recovery operations, USAR teams, the Family Assistance Center and the Oklahoma Standard. Experience a national outpouring of care and concern through cards and letters. Finally, feel the impact of special ceremonies marking the end of rescue and recovery efforts.

## CHAPTER 7 – GALLERY OF HONOR

Honor the lives of the 168 who were killed. Here, in the Museum's most beautiful room, the families display personal photographs and artifacts of their loved ones. Interactive computers provide their personal stories.



## CHAPTER 8 – IMPACT AND HEALING

Hear oral histories from family members, survivors and rescue workers about the first years following the bombing. You will also learn about changes that happened in our community and country following the bombing that now impact us all, how family members and survivors led an effort to pass new Congressional legislation and how a community rallied to remember and to memorialize.

## CHAPTER 9 – INVESTIGATION, EVIDENCE AND JUSTICE

See key pieces of evidence on the trail of evidence used to piece together the case against the conspirators, including crime scene photos, the getaway car, parts of the rental truck, evidentiary boards from the trials and



accounts from investigators and justice team members who worked together to bring justice. You can follow the trail of evidence on interactives that allow you to see up close the pieces of evidence.

There is a section of the Journal Record Building left in its damaged state to show the impact of violence and the devastation. You will learn how it was more than just this city block damaged by the bomb.

## CHAPTER 10 – RESPONSIBILITY AND HOPE

As you turn the corner in the Museum you begin to understand the depth of the rebuilding that took place and the renaissance of Oklahoma City. From the Memorial Overlook you see the Memorial



grounds from a new perspective and a city changed forever by an ever-changing skyline that is part of the hope that people have found. But hope doesn't come without a sense of responsibility. Experience an interactive exhibit where you make choices and understand the impacting consequences.

# OUTDOOR SYMBOLIC MEMORIAL



THIS MEMORIAL HONORS THOSE WHO WERE KILLED, THOSE WHO SURVIVED AND THOSE WHO CHANGED FOREVER ON APRIL 19, 1995. IT ENCOMPASSES THE NOW-SACRED SOIL WHERE THE ALFRED P. MURRAH FEDERAL BUILDING ONCE STOOD, CAPTURING AND PRESERVING FOREVER THE PLACE AND EVENTS THAT CHANGED THE WORLD.

## THE GATES OF TIME

These monumental twin gates frame the moment of destruction – 9:02 a.m. – and mark the formal entrances to the Memorial. The East Gate represents 9:01 a.m. on April 19, and the innocence of the city before the attack. The West Gate represents 9:03 a.m., the moment we were changed forever, and the hope that came from the horror in the moments and days following the bombing.



## REFLECTING POOL

The pool occupies what was once N.W. Fifth Street. Here, a shallow depth of gently flowing water helps soothe wounds, with calming sounds providing a peaceful setting for quiet thoughts.

## FIELD OF EMPTY CHAIRS

Each of the 168 chairs symbolize a life lost, with smaller chairs representing the 19 children killed. Arranged in nine rows, one for each of the nine floors of the building, they are placed according to the floor on which those killed were working or visiting. Each bronze and stone chair rests on a glass base etched with the name of a victim. By day, the chairs seem to float above their translucent bases. By night, the glass bases illuminate as beacons of hope.



The field's perimeter matches the footprint of the former Murrah Building. It is lined by a granite path – granite that was salvaged from the Murrah Plaza.



## THE SURVIVOR TREE

The Survivor Tree, a 90+ year-old American Elm, bears witness to the violence of April 19 and now stands as a profound symbol of human resilience. The message to visitors reads: *The spirit of this city and this nation will not be defeated; our deeply rooted faith sustains us.*

## THE FENCE

The first Fence was installed to protect the site of the Murrah Building. Almost immediately, people began to leave tokens of love and hope on the Fence. Those items now total more than 80,000. Some are preserved in our Archives and many are used for education and outreach in a variety of projects. Today, more than 200 feet of the original Fence gives people the opportunity to leave tokens of remembrance and hope.

## SURVIVOR WALL

On the east end of the Memorial stand the only remaining walls from the Murrah Building. These walls remind us of those who survived the terrorist attack, many with serious injuries. Today, more than 600 names are inscribed on salvaged pieces of granite from the Murrah Building lobby.



## CHILDREN'S AREA

In the aftermath of the blast, countless expressions of encouragement were received from children. A wall of hand-painted tiles sent to Oklahoma City in 1995 by children illustrates that caring. In addition, a series of chalkboards creates an oversized display of these works where children can continue to share their feelings – an important component of the healing process.

## RESCUERS' ORCHARD

Like the people who rushed in to help, this arm of nut- and flower-bearing trees surrounds and protects the Survivor Tree. An inscription encircling the Survivor Tree facing the orchard reads: *To the courageous and caring who responded from near and far, we offer our eternal gratitude, as a thank you to the thousands of rescuers and volunteers who helped.*

