

Obed Wild & Scenic River Junior Ranger Handbook

National Park Service
U.S. Department of the Interior
www.nps.gov/obed



This belongs to:

To become a Junior Ranger, complete the following activities.

1. **Ages 5 - 6 years old** - Complete at least five activities in this booklet with Obediah the Owl in the corner. Obediah is named after a longhunter, Obediah Terrell, who named the Obed River after himself.

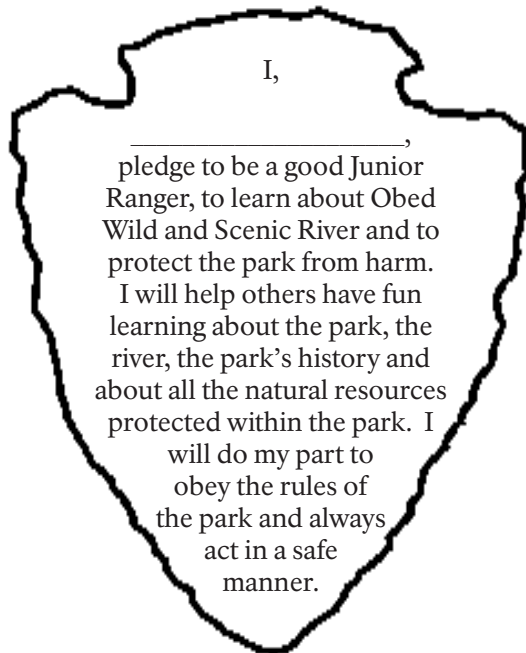
2. **Ages 7- 8 years old** - Complete at least seven activities in this booklet with Obediah the Owl in the corner.

3. **Ages 9 years old and up** - Complete all the activities in this booklet.

Come into the Obed Visitor Center. Have a ranger sign your book. You will receive your junior ranger completion award.

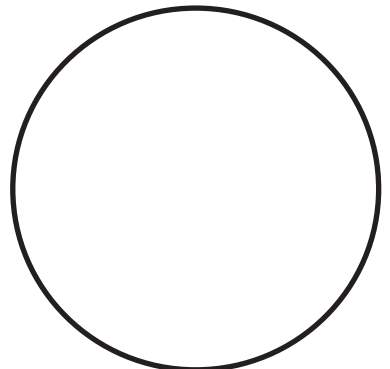


**Obediah
the Owl**



PARK RANGER SIGNATURE

Date your book with the Eastern
National Passport Stamp
at Obed Wild and Scenic Visitor Center.



1. _____
2. _____
3. _____
4. _____
5. _____
6. _____
7. _____
8. _____
9. _____
10. _____
11. _____
12. _____



Activity-Animal Tracks



The animal tracks are from animals common to the Obed Wild and Scenic River's stream banks. Can you identify them? Draw a line from the name of the animal to the animal photo and then to the correct animal track.



Black bear



Raccoon



Blue Heron



River Otter



Bobcat



Barred Owl



White tailed
Deer



Gray Fox



Fish Identification



Fishing is a popular river sport. But what kinds of fish do you think are caught in our national river? Below are just a few of the many types of fish you will find.

You may catch a largemouth bass in clear, deep sections of the river. They are known for their large mouth. The jawbone extends beyond the back of the eye.

Smallmouth bass are also found in clear, deep sections of the river. They can be identified by three to five dark lines radiating back from the eye.

Bluegills can be found in shallow, shady areas along the shoreline. A bluegill is a type of sunfish that has a small body and a small mouth.

Muskellunge live in large pools and often stay around woody debris. A muskellunge is a large fish that is easily identified by its long, large snout.

Catfish are also found in deep sections of a river. You can tell a catfish by its forked tail, whiskers and its lower jaw, which is shorter than its upper jaw.

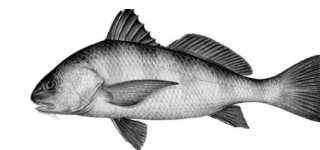
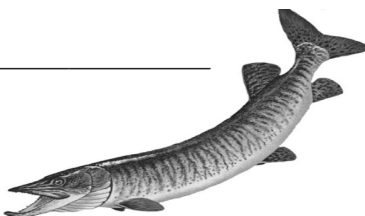
Drum fish can adapt to a variety of habitats. They are usually found in shallow water and can be identified by a drumming sound they make with their air bladder.

Now that you know a few of the fish in the Obed Wild and Scenic River streams, can you identify them from the drawings below? Write their names on the line next to the fish.



A. _____

B. _____



C. _____



D. _____



E. _____

F. _____



Obed Wild and Scenic River Word Search



E A A K P G N X P H R M Y Z S U C L I M B I N G S
 S T L J C L B S U D T S J H U M J A M H E L A Y C
 Z N Z S L G S M D I Z Y S Y H W K L K F Y W J N F
 E A U Z E I I J E M O R Y R I V E R N M W K G R X
 B P J W A G P L P O T T E R S F O R D V F L B I N
 U H I D R C E D B L W J C R Q K H G L F F V I A N
 P Y K O C A V H H N T U O B E D I A H E X P E D R
 F R X O R M Z N O E W L D Q A Y C U R G V D F K E
 M U Z B E P B R W M M G O B E D R I V E R P S G N
 U P A N E G D Q N O B C E H X E N R A F T O D Q C
 U B R R K R Y W F A R Q S J K A Y A K A Z I Z O B
 C B N X W O N I G H T S K Y P A R K L X R B A U P
 X Q U V B U V N C T V I W P L I L L Y B R I D G E
 D R D O S N Z Q G W Q K A I L H D C T Y S D O G K
 R O A B C D R O Y Q N Z A R G Z N T O I J K D X J
 E P M P L E R C Z P Z R K N P I E U T A U I Y J U
 Y A Z V I C O T B V T F I E H N J V W Y R A R L A
 B F B W L D Y Q D T U K T C R O C V A B A L C Y R
 D O Y D L K S C N Q I Y A A H H I F T M Z L C Y E
 T B C G Y Q V I W H H G B O S Y P T F W O E W P R
 J W T F B G O Z N Y D F V G D H E L M E T Y I I K
 C B C S L P V O V E R L O O K J O M S P P F N O T
 N X Z E U D Y H E G V T C I Y V N M B Y S O S E J
 U B O G F Z M C A N O E M J L L C I O O R R A N Q
 L X N Q F H D A D D Y S C R E E K F G R F D P R P

ALLEY FORD
BARNETT BRIDGE
CAMPGROUND
CANOE
CLEAR CREEK
CLIMBING
DADDYS CREEK
EMORY RIVER
HELMET
HIKING
JETT BRIDGE
KAYAK

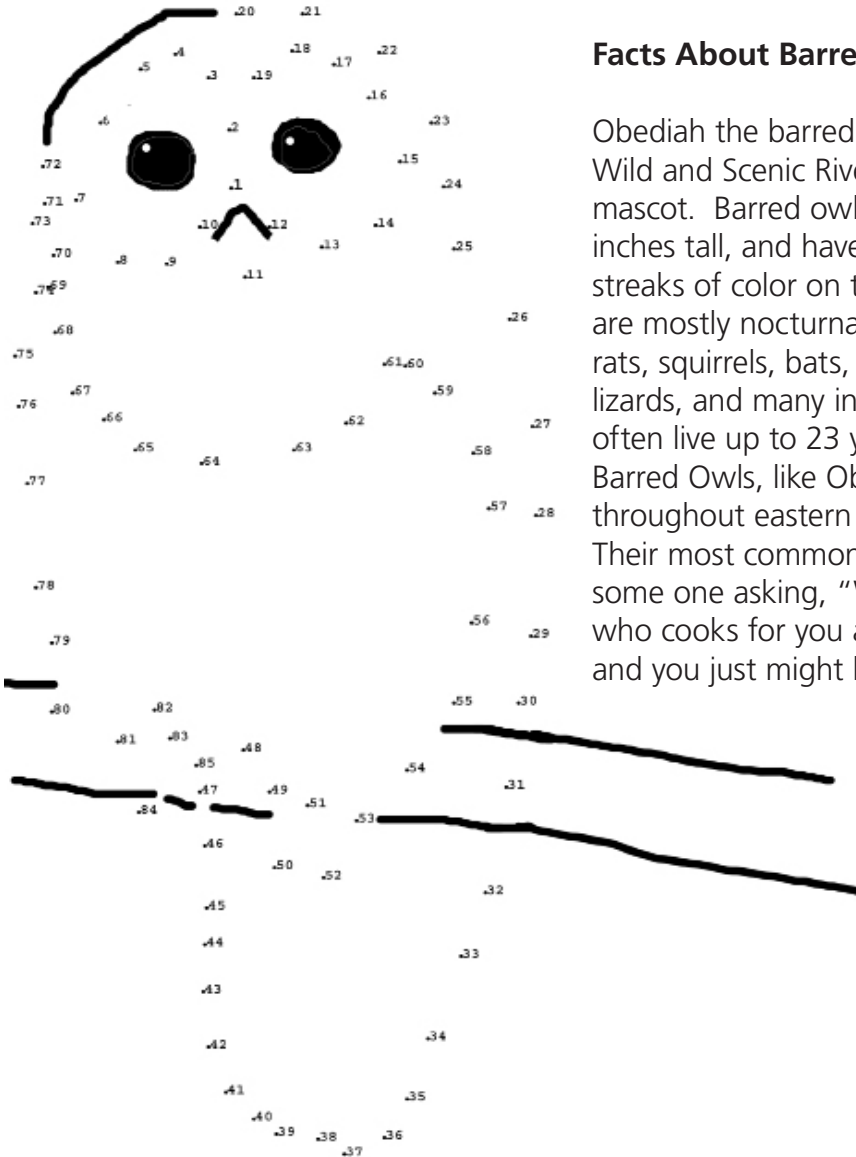
LILLY BLUFF
LILLY BRIDGE
NEMO
NIGHT SKY PARK
OBEDIAH
OBED RIVER
OVERLOOK
PFD
POINT TRAIL
POTTERS FORD
RAFT
RAPIDS

Connect the dots to see WHOOOO this is!



Facts About Barred Owls

Obediah the barred owl is Obed Wild and Scenic River's Junior Ranger mascot. Barred owls grow up to 25 inches tall, and have brown barred streaks of color on their feathers. Owls are mostly nocturnal and they eat mice, rats, squirrels, bats, small birds, frogs, lizards, and many insects. They can often live up to 23 years in captivity. Barred Owls, like Obediah, can be seen throughout eastern North America. Their most common call sounds like some one asking, "Who cooks for you, who cooks for you all"? Listen at night and you just might hear him!



Visit Lilly Bluff Overlook



Walk the short trail to Lilly Bluff Overlook and view the river scene.
Check the correct answer listed below each question.

1. What stream are you looking at from the overlook?

___ Obed River

___ Emory River

___ Clear Creek

___ Clinch River

2. What created the 400-foot canyon that you see from Lilly Bluff Overlook?

___ Ice

___ Volcanoes

___ Earthquakes

___ Water Erosion

3. What is the surrounding land that you are looking at from Lilly Bluff Overlook called?

___ Rocky Mountains

___ Smoky Mountains

___ Cumberland Plateau

___ Tennessee Valley

4. What is the type of rock that you see from Lilly Bluff Overlook?

___ Sandstone

___ Granite

___ Quartz

___ Limestone





Lilly Bluff Scavenger Hunt



Answer the following questions by looking at the wayside exhibits at the Lilly Bluff Overlook:

1.) Name the four different trails that are listed on the big Lilly Bluff Trails wayside exhibit.

- A.) _____
- B.) _____
- C.) _____
- D.) _____

2.) How many miles long is the Bridge Trail? _____

3.) In the Wild and Scenic wayside exhibit at the end of the trail, which of the following does not belong?

- a.) American Indians b.) Logging c.) Farming
- d.) Gristmill e.) Recreation

4.) On the Obed Watershed wayside exhibit, which animal is not depicted?

- a.) River Otter b.) Turtle c.) Dragonfly d.) Pig

5.) Obed's watershed is over _____ square miles in size.

6.) What comes in between Cliffs and Forested Slopes?

- a.) Upland Outcrop b.) Boulder Fields
- c.) Clear Creek d.) None of the Above

When you visit the Obed...



You may encounter many different situations in the park.

Circle the things you *should* do to obey park rules.

Use the list below for helpful hints.

Dispose of trash properly.

View wildlife from a distance.

Pick a flower.

Keep my dog on a leash.

Feed a bear.

Open fire with no one around.

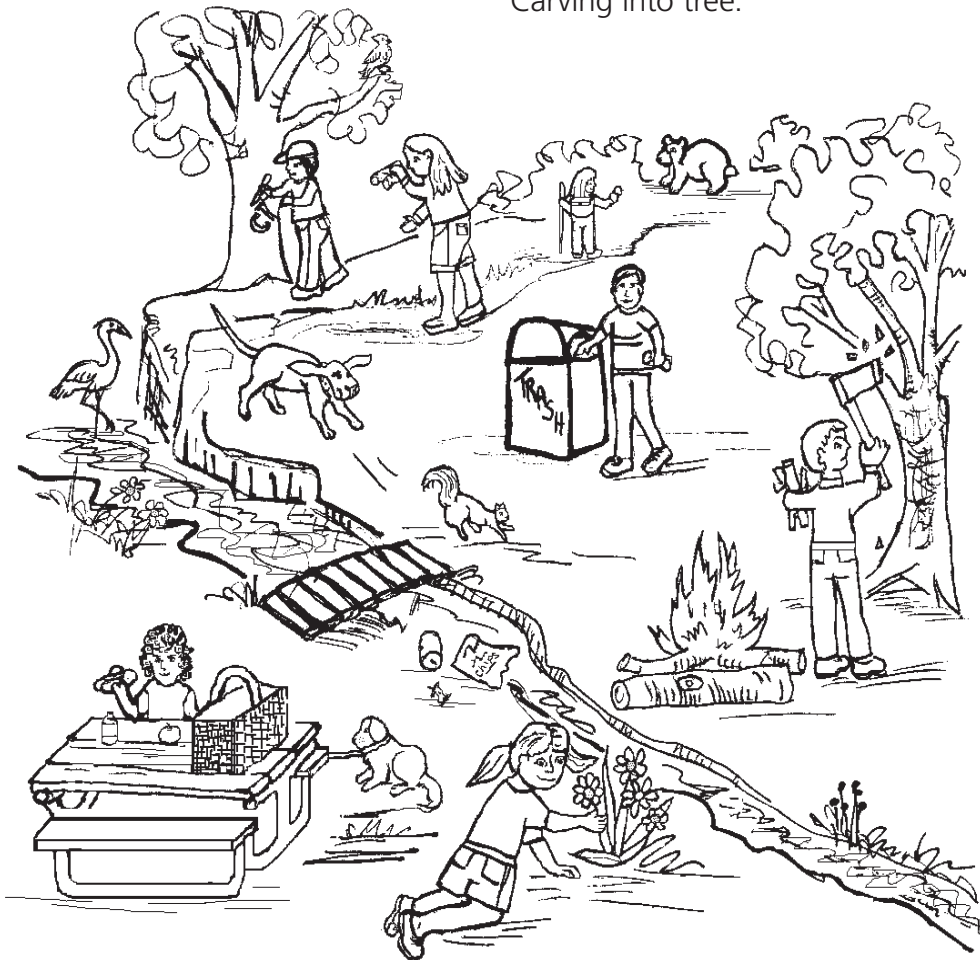
Chopping on a live tree.

Picnic at table.

Let my dog off lease to chase wildlife.

Leave trash along the stream.

Carving into tree.



Help Keep Obed Clean



It is important for us to try our best to keep Obed Wild and Scenic River clean and free of litter. We would like for the people who visit us to be able to enjoy the beautiful land and for our children and grandchildren to enjoy a healthy and beautiful environment also. Unfortunately, there are some people who leave their trash lying on the ground when they visit our park.

One of the easiest things to do to help your park is to pick up litter. It's safest to do this wearing gloves and using a pick up tool or a reacher. Put each piece of trash in a box or garbage bag, then recycle or throw away when you're done.

The recycle bins at Obed WSR are bright blue with labels for plastic, glass, and aluminum. Circle the items that can be recycled below:



Become a VOLUNTEER!

Discover a strong sense of self, positive values and understanding of your important role in caring for the environment, wildlife and our Earth's natural resources by volunteering your time. There are many ways to help care for your national parks, from one-time to reoccurring volunteer opportunities for youth, families, groups and individuals!

Sign up today by contacting the Volunteer Coordinator at (423) 346-6294 or by email at obri_information@nps.gov.



Safety First!



Obed Wild and Scenic River is a free flowing river. You can canoe, raft, fish or swim in the river, but there are certain things you must do to be safe. Here are some tips to make your trip a safe one. Use the words at the lower right to fill in the blanks in these statements.

- Carry a small backpack containing _____.
- Always swim or hike with a _____.
- Wear a _____ jacket when you are in a _____ or around rivers or ponds.
- Use an _____ repellant when hiking in the summer.
- Throw something that will _____ to someone that is in trouble. Never jump in to help them!
- Know how to dial _____ for help.
- Be careful not to touch _____ ivy.
- Watch for out for poisonous _____.

life
water
snakes
float
insect
poison
buddy
911
kayak



Picture This!

Take Only Pictures and Leave Only Footprints...

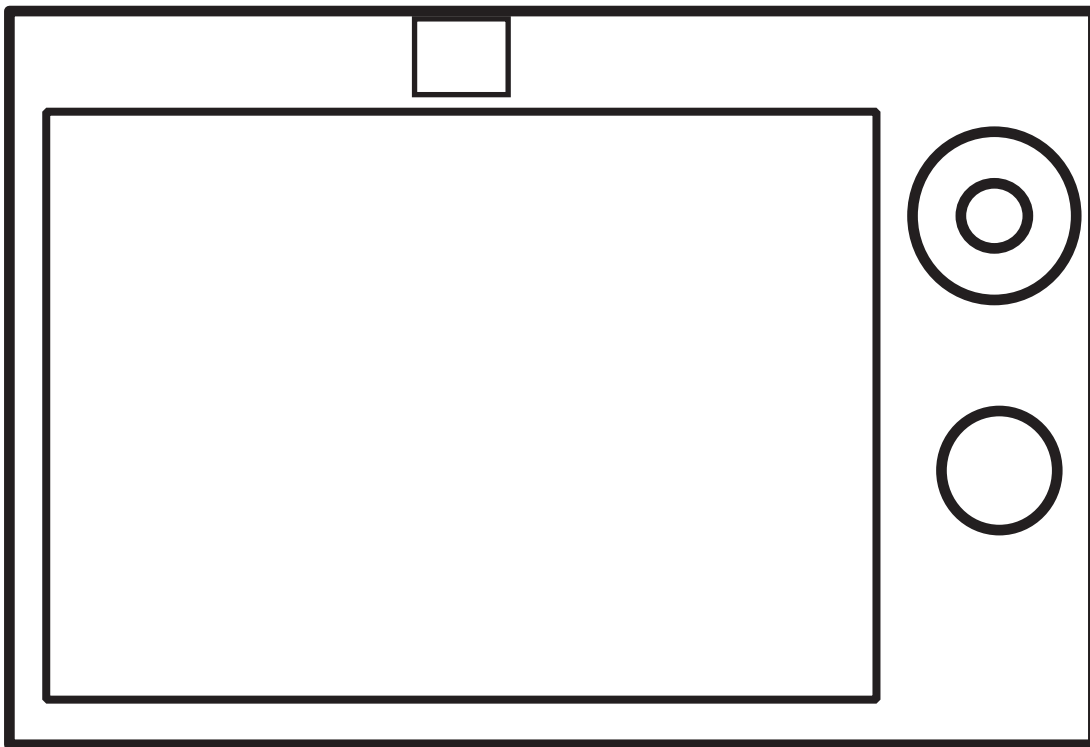


Draw a picture of the most interesting thing you saw while visiting the Obed Wild and Scenic River. It may have been a tree, bird, mammal, fish, person or a place.

Park visitors should never pick up or collect anything to take home with them. You can remember your visit by taking pictures of the things you see.

Help keep the park beautiful! Pick up trash at your campsite and along trails. Leave only your footprints behind.

Draw your picture in the camera viewer below of something that you saw at Obed Wild and Scenic River.



Obed's Rich History

Read the story below. Use the words at the bottom of the page to fill in the blanks. Each space represents one letter.

Obed Wild and Scenic River has a rich history. There has been human activity in this area for thousands of years. Prehistoric _____ left their mark visible with the various artifacts found along the Cumberland Plateau. Some of these may be seen in the park visitor center. Prehistoric people did not stay in this area, but used it for hunting and fishing.

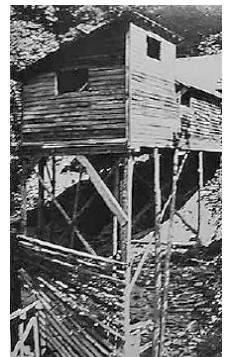
European people came in the 1700s. Some were called _____ because they hunted game with long rifles and explored the land for long periods of time. _____ Terrell was the first long hunter into this region. He named the Obed River after himself. Settlers began building _____ around the time of the American Revolution (1770 – 1780s).

During the past couple of centuries human activity has developed to include industries such as _____, _____, and improvements in transportation. Several sections of the Obed have foundations where grist and saw mills existed and often thrived. Pictured on this page are examples of the Howard _____ Mill and the Nemo _____ Mill. Unfortunately, both of these mills were destroyed in the great _____ of 1929.

The Obed became part of the National Park Service in 1976. Dozens of concerned local citizens asked _____ to preserve the land and river in its natural state for future generations to enjoy. Today, the Obed Wild and Scenic River (one of over 400 park service units) is a prime recreation spot for whitewater paddlers, rock climbers, _____, fishing, bird watching, and camping.

Words to use:

Congress	homesteads
mining	Obediah
Indians	logging
Grist	flood
long hunters	Lumber
hikers	



Left: Nemo Mill photo courtesy of Michael R. O' Neal.
Right: Howard Mill photo courtesy of Noah Howard.

Find it on the Obed Map

Directions: Answer the following questions by looking for answers on the Obed map.

1.) What is the name of the bridge that is in between Barnett Bridge and The Grunch?

- a.) Potter's Ford Bridge
- b.) Jett Bridge
- c.) Clear Creek Bridge
- d.) Nemo Bridge

2.) How many picnic table symbols do you see on the map?

- a.) One
- b.) Two
- c.) Three
- d.) Four

3.) Which of the following is a rapid that is NOT listed on the map?

- a.) Devil's Pitchfork
- b.) Canoe Hole
- c.) Wooten's Folly
- d.) Jack Rock Falls

4.) What is the name of the only campground on the map?

- a.) Jellystone
- b.) Frozen Head
- c.) Yogi Bear's Campground
- d.) Rock Creek

5.) What is the name of the junction just above Daddy's Creek?

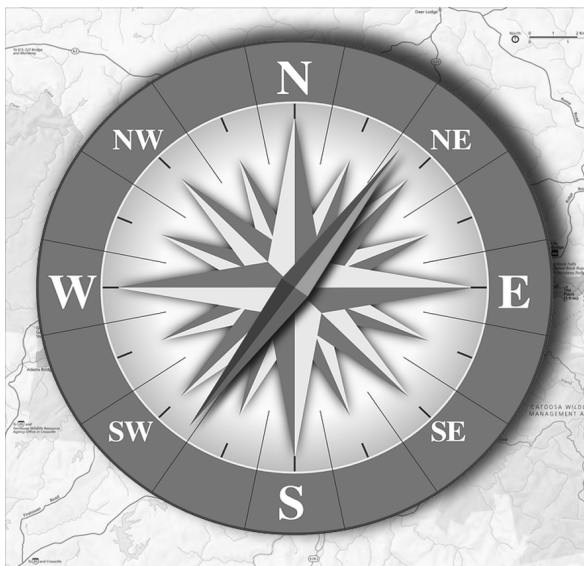
- a.) Obed Junction
- b.) Petticoat Junction
- c.) Conjunction Junction
- d.) None of the Above

6.) Catoosa Road will take you to which section of the park?

- a.) Devil's Breakfast Table
- b.) Lilly Bluff
- c.) Nemo
- d.) Adams Bridge

7.) What is the name of the rapid that is between the Obed Junction and Clear Creek Junction?

- a.) Camel Rock Rapid
- b.) Ohmigod!
- c.) The Grunch
- d.) Widow Maker





This certificate is proudly presented to

please print name

for completing the

Obed Wild & Scenic River Junior Ranger Activity Booklet

Dated this _____ day of _____

Park Ranger Signature