

SUPERINTENDENT'S MONTHLY REPORT

APRIL, 1931

UNITED STATES  
DEPARTMENT OF THE INTERIOR  
NATIONAL PARK SERVICE  
YOSEMITE NATIONAL PARK  
CALIFORNIA

OFFICE OF THE SUPERINTENDENT

May 4, 1931

The Director  
National Park Service  
Washington, D. C.

Dear Mr. Director:

I am submitting herewith report on activities in Yosemite National Park for the month of April, 1931:

000 - GENERAL

010

April was clear and warm. As a result travel for the month will show an increase of about 11% over April of last year. The early spring has advanced the touring season a month. The Winter Camp was closed April 1 and Camp #7 opened for the summer. All Ranger stations were opened early in the month, with the exception of Tioga Road stations and El Capitan.

The first real storm of the spring season began on April 23 and continued until April 28, leaving more than two inches of precipitation in the valley and about six to twelve inches of new snow over the high country of Yosemite. At the close of April snow and water conditions in Yosemite were about 50% normal. The Wawona Road to the Mariposa Grove of Big Trees was open all but the last week of April; an average of 25 cars a day made the trip to the Grove. The Big Oak Flat Road has not been officially opened due to the heavy rain at the end of the month.

020 - General weather conditions

Precipitation in the valley floor this winter season has been only 16.82 inches as compared with 24.16 inches for last year at this date (April 29). Snow conditions at Snow Flat on the Tioga Road were only 53% of last year and in many places the bare ground could be seen at Tuolumne Meadows where last year there was 18 inches of snow. All indications point toward a serious shortage of water and a bad year for fires as conditions are similar to those of 1924, a very dry season.

100 - ADMINISTRATION

110 - Status of Work

Office work is current. Major time has been devoted to the completion of the estimates; a new system of timekeeping inaugurated this month has necessitated a slight change in procedure. Personnel records of per-diem employees have been improved greatly.

120 - Park inspections by:

121 - Superintendent

The Superintendent has made regular inspection trips of all going operations around the park. A trip was made to San Francisco on special private lands mission for the Director.

122 - Special Field Representatives

Mr. Salmon, of the Bureau of Entomology and Mr. Benedict of the Sierra National Forest, were in the valley to go over insect control plans.

Messrs. Blossom and Wilt, of the Washington Office, arrived for an inspection of the Yosemite Park and Curry Company accounts, on April 23.

123 - National Park Service officers

Senior Park Naturalist Ansel F. Hall visited the Park April 26 to 30 to assist with the details of the Park educational program.

125 - Other governmental officers

Mr. H. B. Hommon arrived April 27 and remained until the afternoon of April 30, inspecting construction work on the new sewer plant and line and proposed construction at Mariposa Grove.

130 - Finance and Accounts

Following is a statement of the status of the various appropriations handled by the Park:

<u>Appropriation</u>	<u>Allotment</u>	<u>Expended &amp; Obligated</u>	<u>Balance</u>
40/1434, Yosemite National Park, 1930 - 1931	\$ 552,327.70	\$ 541,850.80x	\$ 10,476.90x
4X436, Roads and Trails, National Park Service	2,063,805.14	823,296.08x	1,240,509.06x
40/1406, Forest Protection and Fire Prevention	12,000.00	10,118.96x	1,881.04x

(x - Estimated figures)

#### 140 - Labor Situation

There is still an ample supply of high-class mechanics available for work. Many construction jobs are under way -- even more work under way than at the corresponding period last year.

#### 150 - Equipment and supplies

The following equipment was received during April:

Miscellaneous equipment for the plumbing shop; 1 potato peeler; 2 Underwood typewriters; 2 desk lamps; 3 cabinet bookcases; 1 aneroid barometer; 24 garbage cans; 12 incinerators.

#### 170 - Plans, maps, and surveys

Office work has consisted of revising Valley maps, computations for Cascades road fill, alignments for electric, sewer and water extensions, tracings for the Mariposa Grove water line and numerous small charts, designs and blueprinting. Numerous small survey tasks have been accomplished, among them being the staking out of the Ahwahnee parking area, location of the water and sewer lines for Indian Village, commencement of plane table maps of campground improvements, survey tasks at the new sewer plant and the preparation of a plane table map of the new sewer disposal plant layout.

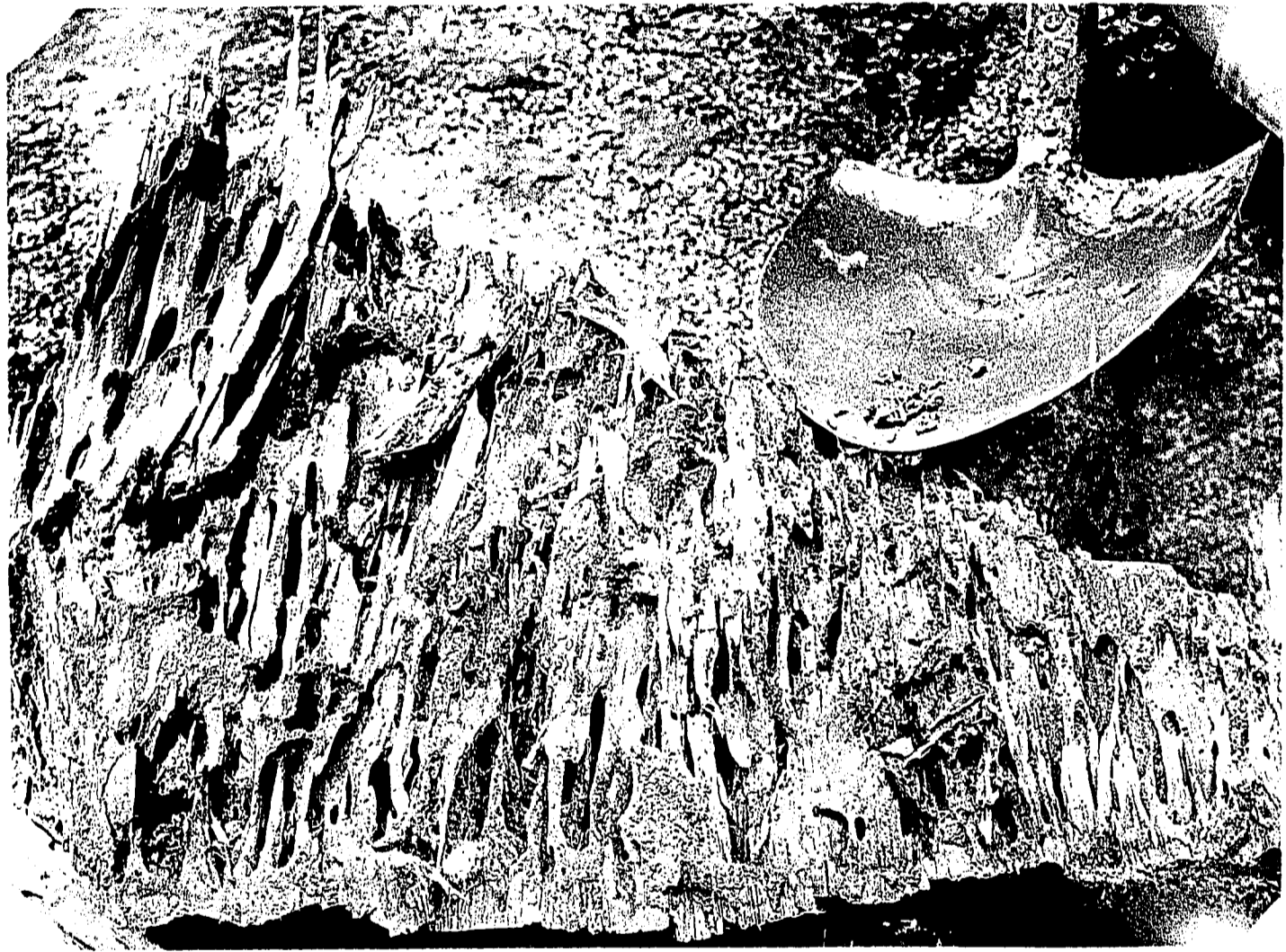
A resurvey was made of the preliminary line for the Mariposa Grove water supply, leaving about 1000 feet of line yet to be run. Charts and maps have been brought up to date for the Superintendent's reference folder. A number of plans and estimates are under way for future construction. The entire force has been occupied most of the time with supervision and facilitating going jobs.

#### 200 - MAINTENANCE, IMPROVEMENTS AND NEW CONSTRUCTION

##### 210 - Maintenance

Water System - The unprecedented warm weather has brought in a larger number of campers, making it necessary to open Camp 7 and turn on all Valley hydrants for sprinkling purposes. Most of the outlying water systems have been turned on, including Glacier Point.

Sewer System - Bills of lading have arrived for the new sewer cleaning apparatus and cleaning of the lines will soon commence. A sewer pump operator was employed April 1, who has also been assigned to daily inspection and cleaning of the water supply intake.



Termite infested stump removed from under Government Quarters in Old Village. Weakened foundation and stump were afterwards sprayed with arsenic-kerosene solution.

Buildings - Monthly maintenance items included: inspection of all buildings and preparation of a maintenance program; improvements at the Administration Building which embraced new panels for file drawers and the removal of the wire cage just outside the cashier's vault and many small repair jobs, most of them occupying less than one man day's time.

A serious condition was found in one of the two old residences in the Old Village, due to the investigation of Draftsman Trevor. Absolute identification of termites causing damage to the foundation was made by an entomological expert who had been working on forest insect control. The termite infested stump, directly under the front foundation of the building, was partially torn out so there would be no contact with the floor joists and the entire foundation sprayed with an arsenic solution.

Trails - The Glacier Point Trail and Eleven Mile Trail were opened on April 4. The Yosemite Falls Trail, the Sierra Point Trail, the Mist Trail, and all Valley bridle paths, were also cleared, making a total repair mileage of thirty-two.

Ranger-supervised trail crews are now clearing, repairing and maintaining the trails in each ranger district with about three trail men in each section of the park, putting the trails in shape for summer travel.

Roads - The worst portions of the Wawona Road are being gone over by the contractor and the road is now passable. The Big Oak Flat Road was opened with the aid of the new "Sno-Go" early in April. The Big Oak Flat Road was opened with indications of the road foundation in very good shape. The Hetch Hetchy Road was also repaired from the junction of the Tioga Road to Mather Station and from Mather Station to Hetch Hetchy the City of San Francisco is taking care of the maintenance. The Tioga Road is open as far as Aspen Valley Lodge. The Mariposa Grove roads have been used throughout the month, a large number of tourists entering. About April 20 work was commenced on opening the Glacier Point Road but has been postponed on account of storms. Due to the extensive oiling program last year, nearly all the outlying roads are in excellent shape compared to previous seasons.

Signs - All signs were placed a uniform height of 36" from the ground to the top of the upper lettering. A number of location improvements were made and traffic buttons were installed at the Camp Curry intersection and at the south end of Sentinel Bridge. At the Ahwahnee some glass buttons were arranged in a narrow form on a wood background and installed with very good effect. Elevation signs have been placed on the floor of the Valley and as soon as the Tioga Road is open, all of the outlying elevation signs will be placed. The aneroid barometer recently purchased is being used for this purpose.



Snow removal Big Oak Flat Road (by Snogo)

## 220 - IMPROVEMENTS

Buildings - A new floor has been placed on Chief Townsley's front porch; maintenance cabin at Mariposa Grove has been sealed; a porch has been built at Mr. Jenkins' residence; painting of the interior of the Administration Building was completed; Mr. Ewing's kitchen was painted, and floors and roof were treated at the Arch Rock station. The maintenance program in respect to buildings includes many more improvement items than usual and is creating a favorable reaction among the local residents.

Roads - Road improvements have hardly commenced as yet. The maintenance items have been previously mentioned. The principal item has been the commencement of repainting of traffic stripes. Those in the Happy Isles parking area and Mirror Lake parking area have been completed. Work is now under way at the Camp Curry parking area.

Trails - Improvement of the Nevada Falls Trail consisting of the installation of 245 feet of parapet wall has been completed.

## 230 - NEW CONSTRUCTION

New Sewage Plant and Line - The outfall main has been entirely laid, making a continuous line from pump plant #1 to the grit chamber. The relocation of the line below the moraine has been finished with the exception of some cleanup. Landscaping eradication of construction activities presents a very good appearance. Some excavation remains at a few scattered points, one rather long stretch in the vicinity of the old disposal beds. These are expected to be completely backfilled during the first week of May. A weir has been installed to measure the amount of infiltration. The largest quantity measured to date has been 42,000 gallons per day, which is well below the limits for the length of line installed.

Associate Engineer Burr has practically completed the grit chamber. He has also installed a temporary connection from pump house #1 to the new line and is preparing connections from the pump plant to the connection. All of the scattered pipe along the line has been collected and stored at the new plant.

Stripping at the disposal plant is completed, aggregates placed in stockpiles and the sludge bed excavated. The plans for the building over the laboratory are ready and work will soon start on that frame structure.

Cascades Area Improvement - This work has been completed. A total fill of 1276 yards was placed, 185 yards of this consisting of old road removal. Loam was hauled and spread over the new fill. The lune east of the bridge was oiled and compacted. The remaining road shoulders were also oiled for a width of two feet from the pavement and drains constructed. Log guard rails have been placed on each side of the approach

where the dangerous curve was eliminated. Improvements also included the placing of 1552 square feet of rock retaining wall protecting bridge approaches and creek banks.

Stoneman Siphon completed April 1. It was necessary to haul in fill material over the outlet of the siphon and cover the fill with leaves and needles. A test was made of the siphon on March 30 and an entirely satisfactory performance was observed. The siphon has been in operation since then and the old sewer line under Stoneman Bridge has been abandoned. The portion of Stoneman Meadow disturbed by construction has been spread with loam and seeded with grass.

Ahwahnee Parking Area - Construction started April 2 and continued until about April 20, at which time the approach changes and the west parking area which houses 101 cars had been completed. The new approach, which was lined with rock curbs obtained from Cascades, is solving traffic difficulties. Parking strips, 2" x 4", were installed in the parking area after it had been oiled and rolled. The new outlet road was paved with a light armor coat of crushed rock fines and fuel oil. Curb logs for the parking area were obtained during clearing for the El Capitan view, creosoted and placed on ground surface and backed by 6" x 6" creosoted posts 30" long sunk in the ground, the upper portion being beveled off at an angle of 45°. Loam was hauled and placed on the triangular approach enclosure. Work is now suspended until the Company commences excavation of the pool so that some expense might be saved in using excavated material in the remaining parking areas.

Bridle Paths - 2.14 miles were constructed, from near the central portion of Army Row along the base of the talus westward, back of the Winter Campground, to and along the Merced River to upper El Capitan Meadow. The location on the south side of the river has been established.

#### Outlying Trail Construction

The rock cut below Nevada Falls has been completed with the exception of the parapet wall. It is expected to finish the parapet during May. The trail is open to the public and Park Service pack trains are using the new and shorter trail for the delivery of supplies to the Nevada Falls camp.

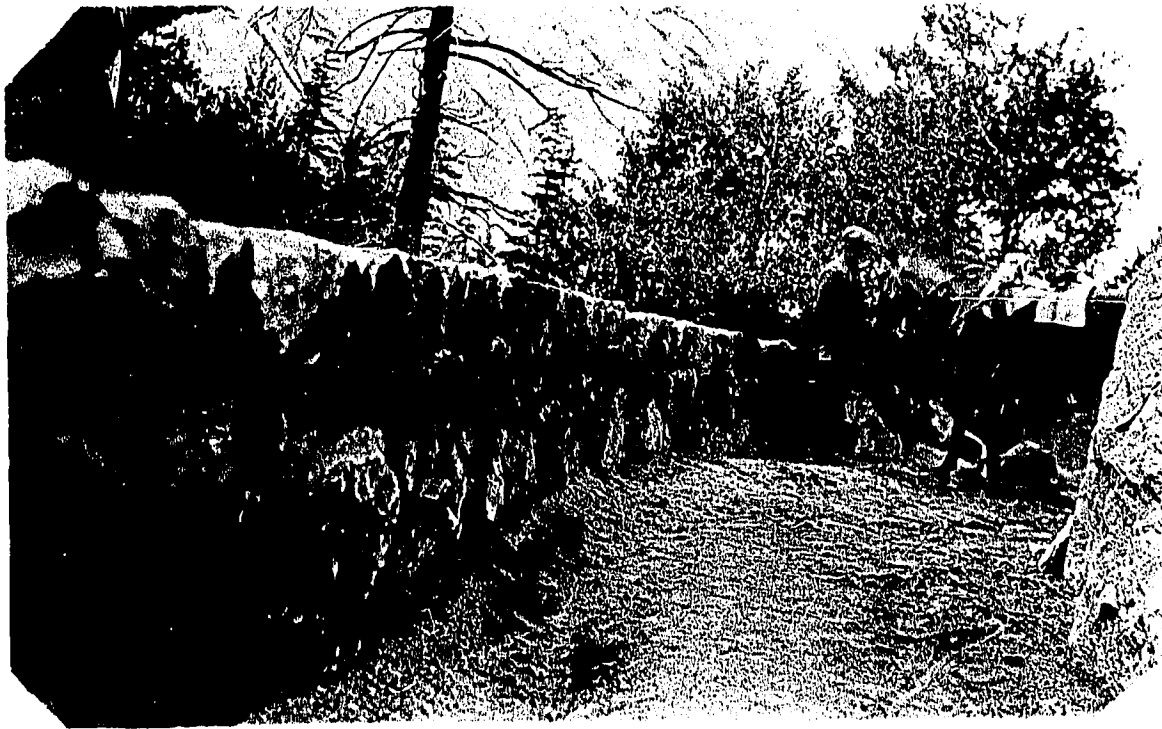
A trail construction camp was established for the Chilmealna Trail building near the old South Fork ranger cabin. Completed trail consists of 5700 feet and 500 feet of retaining wall.

#### Water System Extensions:

Work commenced on the trenching of the spring collection line April 3 and was completed on the 27th. 900 feet of the trench was through large boulder terrain and about 300 feet of it was in such close prox-



Completing rock cut on new trail near  
Nevada Falls.



Vernal Falls Trail parapet wall showing effective protection at place which was dangerous to passage of foot and horse travel at the same time.



Parapet wall on Vernal Falls Trail  
opposite settling tank.

imity to the fish hatchery buildings that extreme care was necessary in blasting. No work has been done at the collection basin other than determination by means of earthen bulwarks of the manner in which the spring flows.

Buildings - The garage for the hospital was staked out, earth work computed and excavation commenced April 29.

The two Glacier Point cabins were staked out and elevation corners obtained. Award of the contract will be made early in May.

Mariposa Grove Cabin - The exterior closet housing the gas cylinders was lined with logs. The entire building was stained on the exterior. The log rafters and roof sheathing were varnished on the interior in expectation of reflected light installation. Extensive plans are under way by Chief Forester Ansel Hall and Park Naturalist Harwell for the placing of exhibit panels and furniture.

Campground Development is proceeding rapidly. Two hundred tables are under construction at the carpenter shop. Log guard rails in the campgrounds developed last year are being stained. The new road location and log curb position has been flagged in Camp 11.

Indian Village - The new location has been decided definitely. The position will be about 500 feet west of the Winter Campground located on the north side of the Valley against the talus. Sewer and water locations have been staked.

Plans for quarters for the doctor, dentist and employees' residence are nearing completion.

Mariposa Grove Water System - The Mariposa Grove construction requires the establishment of a camp for sixty men at the Grove and will necessitate the erection of another camp for forty men, either in the vicinity of Star Mill or at Fish Camp. The new camp location will be approximately one-fourth of a mile southwest of the Grizzly Giant, out of the way of campers and out of sight. Clearing of the site for the tents, which will be in the form of a quadrangle and excavation for the drain and sump have also been finished. It is expected that this camp will be the model camp of the Park when completed. Mariposa Grove construction will bear the cost for the two camps, approximately \$2300. The mess building will be of a permanent character for thirty men and of temporary nature for an extra thirty men.

Road Oiling - The one-half mile distance from El Capitan checking station on the Big Oak Flat Road was oiled; work was stopped because it was deemed an undue expense with last year's improvements still in very good condition. The Yosemite Lodge parking area and adjacent roads have been oiled. The oiling program as now outlined is considerably curtailed, no work being contemplated on the Big Oak Flat or Tioga roads other than

that portion of the Big Oak Flat which will later be improved.

Merced River Revetment - Debris accumulated on the river banks was removed and logs blasted from the river channel from Pohone Bridge to Rocky Point. This also included removal of brush and dead limbs for a distance of 100 feet back of the river bank, presenting a decidedly improved appearance of that area. Trenches have been excavated through the gravel bar by Camp #6 near dragline location, diverting a stream the velocity of which will in a short time erode a new channel and prevent further erosion of the north bank in that vicinity.

Road Shoulders, Floor of Valley - New construction was commenced late in the month by the trenching of approximately one mile of narrow ditches to prevent tourists from driving into meadows or other areas. Trenches were also constructed adjacent to a portion of the oiled roads entering picnic areas.

Other new road construction work has been the establishment of a loop near the Big Pine and a loop at the end of the oiled road entering the old garbage disposal site.

A landscaped metallic telephone line was constructed along the trail from Happy Isles to Little Yosemite. This is the only construction affecting the electrical department this month.

#### 260 - Landscape work

The establishment of the Leavitt house in its new location was finished with completion of work by painters and carpenters and occupancy by Mr. Moen.

Moving of the old Taylor house has progressed favorably under Mr. Kottbauer's direction and the house is now on the site, being placed in the proper position. The garage was torn down and the area entirely vacated, plowed, seeded and otherwise landscaped. The position of the new site entailed considerable grading and excavation.

#### 300 - ACTIVITIES OF OTHER AGENCIES IN THE PARK

##### 310 - Public service contractors

The studios of Messrs. Best, Boyson and Foley were open daily throughout the month.

The Ahwahnee and Yosemite Lodge have been operated throughout the month by the Yosemite Park and Curry Company, with the overflow of visitors being cared for at the old Sentinel Hotel. Yosemite Lodge reports a total of 4,302 visitors this month compared with 5,689 last April; there were 1,208 guests at The Ahwahnee compared with 1,810 last April. There were sixteen guests registered at the Glacier Point Mountain house compared with 19 last April.

Degman's Bakery opened for summer business April 10. They have repainted the interior and have purchased new electric equipment. The old-time brick oven has been rebuilt.

520 - Cooperating governmental agencies

The status of the new construction work on the Wawona Road, under the supervision of the U. S. Bureau of Public Roads is as follows:

Camp Hoyle-Mariposa Grove Section, Wawona Road - 7.09 miles

2 $\frac{1}{2}$  miles rough graded; 2 miles opened up. No finishing work has been done. Equipment in use: One shovel; trucks; compressors. Thirty-seven men are employed.

Pollock Company, Contractors.

Clearing, 85%

Percent., 30%

Per. Apr. 5%

Per. Previous Months 0 (Winter Shut-Down)

Eleven-Mile section, Wawona Road - Hoyle Camp

Day labor under Bureau of Public Roads' direction; cleanup and oiling completed on April 15. Length 8.7 miles.

Cleanup and Oiling of the Wawona Road between Eleven-Mile and Turtleback Dome started April 15.

Equipment in use: 1 "60" Caterpillar, 1 5-ton truck and 1 truck hoist. One mile north of Chinquapin summit has been cleaned up. There are 30 men at work.

2A3 - Eleven-Mile--Grouse Creek section, Wawona Road - Length 6.5 mi.

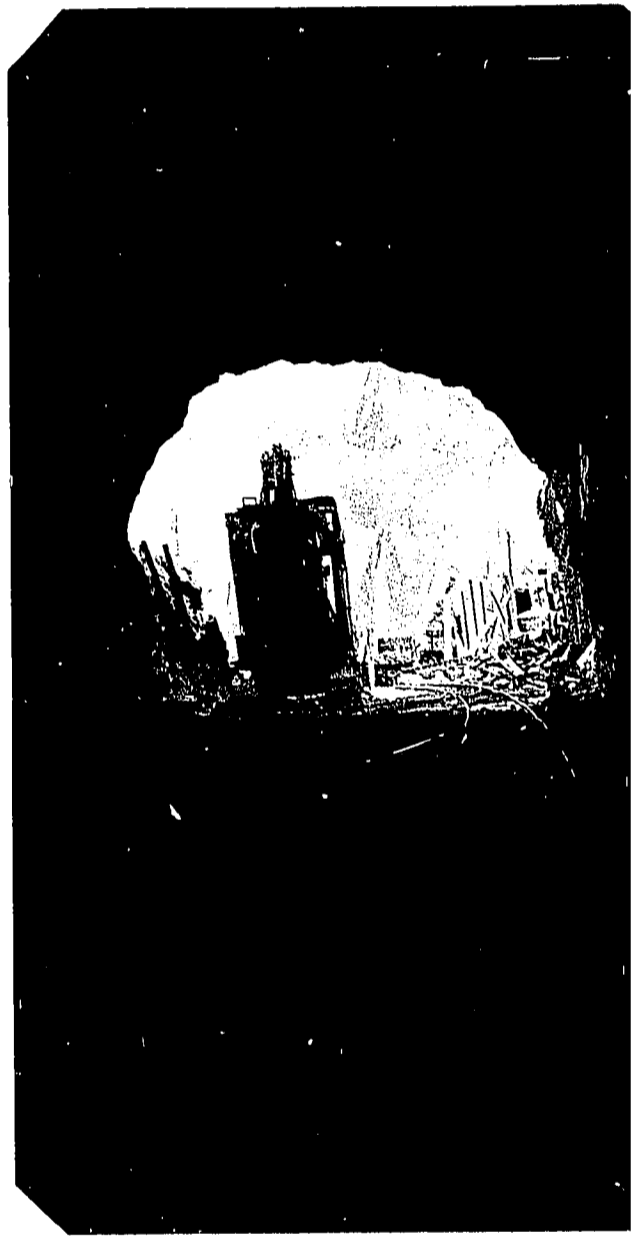
Welch and Murdoch, contractors; Equipment, 2 shovels, four trucks, one Caterpillar grading outfit. Have rough graded the entire project and are now clearing up and finishing. There are 40 men employed. Percentage to date, 94; Percentage during month, 8; Percentage prev. mo. 0.

2A4 - Grouse Creek--Turtleback Dome Section - Wawona Road - 2.2 mi.

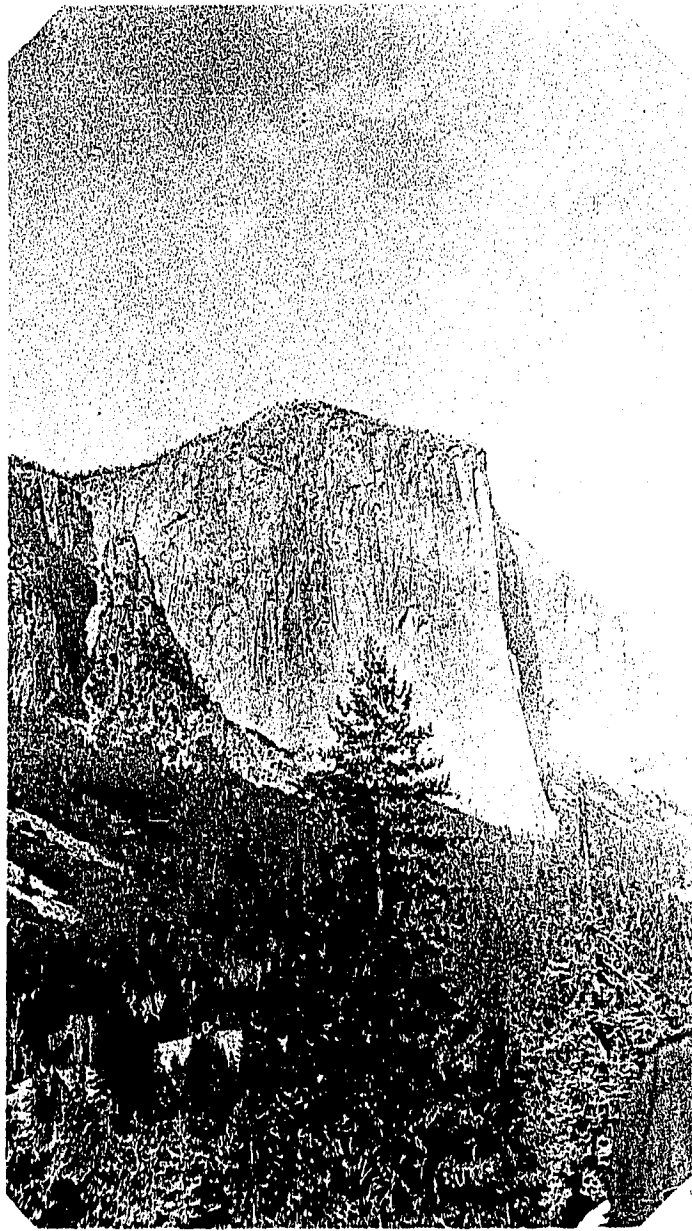
Contoules Construction Company, contractors; the project was completed and accepted as satisfactory on April 20, 1931. Percentage to date, 100; percentage during month, 22; percentage previous month, 0.

2A5 - Turtleback Dome--Valley Floor Section, Wawona Road - Length 3.7 mi.

A. C. Goerig, contractor; the equipment in use: 1 shovel and 4 trucks on grading work and 1 shovel, 2 battery locomotives and dump cars in the tunnel. One and one-quarter miles are rough graded and the tunnel



View from E. portal of tunnel - Ne  
Wawona Road



View of El Capitan from E. portal of  
tunnel - New Wawona Road

heading is in 690 feet. A subcontractor is paving concrete culvert extensions along the South Road, and another sub-contractor is placing rock wall around Turtleback Dome. There are 165 men working.

Mr. Tepper, representing Stuart Smith, is removing the rock-crushing equipment.

350 - Donations and Accessions of all kinds

There were no accessions this month.

400 - Flora, FAUNA AND NATURAL PHENOMENA

410 - Ranger, naturalist and guide service

Eight temporary rangers were hired during the latter part of March and the first half of April, due to the early opening up of the roads and the checking stations. The permanent force consisted of 16 men, and district rangers, composed of men who have had long experience in the ranger department, were placed for the summer season as follows: Ranger Adair, at Mariposa Grove; Ranger Reymann at Chinguapin; Ranger Irwin at Crane Flat and Ranger Danner at Mather station. Ranger Skelton will take charge of the Tuolumne Meadows district when the Tioga Road opens about the first of June.

Regular patrols were made over all the open roads by the district rangers. Practically all of the 49 ranger positions for the coming season have been filled from the 200 applications which were received. Most of the rangers selected are between 25 and 35 years of age and men of some qualifying experience.

Twenty-two auto caravans have been conducted during April, serving 849 people, an average of 38 plus per trip. The bear "show" has been very good, from two to nine bears being present each of the thirty nights of April, or a nightly average of 5 plus. The largest audience was contacted on April 25, when 450 people attended the "show".

Comparison of Lecture and Guide Service  
April, 1930 and April, 1931

<u>Lectures</u> <u>Station</u>	<u>April, 1930</u>	<u>April, 1931</u>
Yosemite Lodge	7 - 800	13 - 1,425
The Ahwahnee	1 - 75	8 - 690
Museum	5 - 125	19 - 666
Special	- -	10 - 408
Bear-Feeding Platform	- -	30 - 4,315
Outside of the Park	3 - 435	5 - 2,375
Totals	16 - 1,435	85 - 9,747

<u>Field Trips</u>	<u>April, 1930</u>	<u>April, 1931</u>
Auto Caravan	7 - 400	22 - 849
Special	<u>3 - 108</u>	<u>9 - 192</u>
Totals	15 - 508	31 - 1041

#### 420 - Museum Service

The Museum has been kept open daily from eight o'clock until five throughout the month. This included the noon hour. The plan of leaving the Library Reading Room open all day long, although not attended, has worked out very satisfactorily and has become Museum policy.

The plaster cast relief map installed last month as a trial in the foyer has proved very popular. It will be given a full tryout during the summer. Our visitors seem to get real satisfaction out of finding their own points of interest and planning their own trips on this model map.

An attractive flower show has been maintained all during the month on the back-porch of the Museum by Ranger-Naturalist Enid Michael.

#### 440 - Insect Control

Rangers Adair and Merrill were assigned to this work nearly all of March and the first of April, supervising the cutting of trees that were infested with the bark beetle, in the valley floor and along the mountain roads.

#### 460 - Birds

This year summer visitants are arriving days ahead of the average time for their appearance in the Valley. It seems reasonable to suppose that the weather may have had some influence on the movements of the birds as the last winter was exceptionally dry.

Many species of birds got off to an early start this year in their nest-building activities. Those species that were actually seen engaged in nest-building activities were: Band-tailed Pigeon, Belted Kingfisher, Hairy Woodpecker, White-headed Woodpecker, Red-shafted Flicker, California Woodpecker, Blue-fronted Jay, Brewer Blackbird, Evening Grosbeak, Sierra Junco, Sierra Creeper, Water Ouzel, Red-breasted Nuthatch, Mt. Chickadee, California Bushtit and Western Robin.

A pair of Pileated Woodpeckers was seen in Camp #7 April 30. This is the first springtime pair seen for several years.

#### 470 - Animals

Practically all the bears turning up at our nightly bear banquet at the feeding platforms have been in very good condition. Any one wanting to see a bear by the close of the month has easily been able to find one along the highway at the lower end of the Valley near the platforms at most any time of the day.

The first Golden-mantled Ground Squirrel of the season was reported as seen at Mariposa Grove by Ranger Satterwhite on April 8.

Hundreds of deer are now seen along the Wawona Road and they are fast moving into the higher elevations due to the early spring and the lack of snow below 7,000 feet. Rangers report an unusual number of coyotes in the high country this year.

#### 490 - Miscellaneous

Toward the end of April it is seemingly apparent that the later blooming flowers are to have a poor season below the Park boundary in the Merced canyon. Too long has been the unbroken stretch of fair weather. Showers may yet save the bulbous plants, but the outlook is not promising.

During the latter part of April the flowering Dogwood (*Cornus nuttallii*) has made a wonderful show on the floor of the Valley. By the last week of the month they reached the height of the season's bloom.

Boisterous winter winds have had their say on the floor of the Valley and have gone away. By the middle of the month oak and cottonwood were garbed in soft leafy newness and the oaks gaily festooned with myriad golden pollen tassels.

#### 500 - USE OF PARK FACILITIES BY THE PUBLIC

About 50 to 60 camps are to be found every day in Camp #7 with about 180 people, on the average, enjoying the early spring in Yosemite and using the new tables, fireplaces and modern conveniences in the camps. Completely equipped ranger stations, bulletin boards, camp registers and information headquarters are now being set up in each campground in preparation for the summer rush in June and July.

The road to the Grove was used a great deal by the visiting April crowds. The new trail, along the Merced River from Little Yosemite to Merced Lake, officially opened on April 22, provides a shorter and quicker access to the region.

The Housekeeping Camp is not as yet open.

#### 520 - General Weather Conditions

The water in the falls and in the rivers started to appear at their

large spring volume about three weeks earlier than usual. Snowfall in the valley this past winter has been only  $11\frac{1}{4}$  inches as compared with 72 inches for last year to this date.

#### 530 - Visitors

April 5 - J. P. Thompson, of the Federal Employees' Association.

" 8 - R. D. Currie, Associate Mining Engineer, U. S. Bureau of Mines, Pittsburgh, Pa.

" 9 - Mr. and Mrs. John Anderson, of Detroit. Mr. Anderson is lawyer for Henry Ford.

" 10 - Mr. Charles Dana Gibson and wife were taken on a special trip to Mariposa Grove by the Park Naturalist.

" 10 - Hon. James M. Fitzpatrick, member of Congress, New York.

" 10 - Horace M. McFarland, friend of the late Stephen T. Mather and Director Albright.

" 11 - Howard Ferris, Jr. of Yorktown, Virginia, wealthy eastern friend of National Parks.

" 13 - E. W. Runyon, of New York City, former director of the American Museum of Natural History.

" 14 - Hon. A. R. Robinson, member of Congress and Commander Eagle, U. S. N., accompanied by Mr. Robinson, were taken to the Mariposa Grove of Big Trees. Greatly impressed with the National Park Service and our Park.

" 15 - Charles Dana Gibson and wife were taken on a special trip to Mariposa Grove.

" 24 - Messrs. William French and Fry of the California State Industrial Accident Commission, were accompanied on a tour of the Valley by the Engineer and the Park Naturalist.

" 26 - Senior Park Naturalist Ansel F. Hall assisted the Park Naturalist with the details of the educational program.

#### 540 - Public Camps

The Winter Camp was closed the first of the month; Camp #7 was opened to the public for the summer months.

## 600 - PROTECTION

### 610 - Police Protection

April was a very quiet month, with no cases taken before the commissioner.

### 620 - Fire Protection

On April 12 a small fire burned over about 2 $\frac{1}{2}$  acres of brush and pine needles along the new Wawona Road near Grouse Creek. It was caused by brush burning operations, but was quickly put under control by rangers and men from the road crew. The fire situation was greatly relieved by the 2 inches of rain on April 23 to 28.

Ranger Wegner attended the Forest Service Fire Control meeting in Berkeley April 1 to 6. He has been placed in complete charge of all fire fighting work for the coming season.

### 650 - Signs

Mention has already been made under "210-Maintenance".

### 660 - Sanitation

Water samples have been satisfactory. One of the milk analyses showed too high a bacteria count. Most of the garbage cans have been repainted at a unit cost of .322 cents. A new contract was made with an outside contractor at a unit cost of 50¢ per ton for wet garbage hog feed.

Mosquito control has not been serious this month altho numerous fresh pools have needed oiling. The sanitation crew is being augmented slowly and high-class men are being employed.

## 900 - MISCELLANEOUS

Dr. Hartley G. Dewey, operating the W. B. Lewis Hospital, handled a total of 238 cases during the month. There were 666 office calls and 60 house calls; there were 16 minor and 3 major operations performed. No births or deaths occurred in the Park during April.

Mr. J. S. Reeder, Superintendent, Standard Stations, Inc. called and advised the Superintendent that this company is taking over the retail business of gasoline in Yosemite. Mr. Knowles will have charge of wholesale only. They are changing a number of their men and expressed a desire to cooperate with the Government in every way possible.

An inspection was made of the Contoules road contract April 20. A very good job of cleanup was done. Several pieces of tin and cable were left on the road, which they immediately removed. Clearance has been given this contractor on his work.

On May 1, the operation of the Government telegraph office was taken over by the Western Union Telegraph Company.

Church Services

Roman Catholic Mass was held each Sunday in the Old Village Chapel at 11:15 a.m.; Protestant services were also held in the Chapel at 10:00 a.m. Sunday School was held in the schoolhouse at 11:15 a.m.

Very respectfully,

AA

Superintendent

10-215

UNITED STATES  
DEPARTMENT OF THE INTERIOR  
National Park Service  
Washington

REPORT OF NON-APPOINTED PERSONNEL

(TEMPORARY)  
YOSEMITE NATIONAL PARK

Changes outside the District of Columbia for the month of April, 19 31

	Total at beginning of month	Additions	Separations	Net Gain or loss (a)	Total at end- ing of month 4/30/31
C.S.	77	13	4		86
P.D.	222	108	46		284
<b>Total</b>	<b>299</b>	<b>121</b>	<b>50</b>		<b>370</b>

(a) If loss, indicate by minus sign.

UNITED STATES  
DEPARTMENT OF THE INTERIOR  
NATIONAL PARK SERVICE

10-157  
(July, 1929)

TRAVEL REPORT

1931

..... Yosemite ..... National Park for the month of April .....

	This Month	This Travel Year To Date	This Month Last Year	Last Travel Year To Date	Increase for Travel Year	
					To May 1st. Number	Percent
<u>PRIVATE TRANSPORTATION:</u>						
Cars first entry, . . . . .	4112	16156	4660	17855	-1699	-9.51%
Cars reentry, . . . . .	3725	15355	1917	10243	5112	49.91%
Motorcycles, . . . . .	11	56	9	41	15	36.58%
Total motor vehicles, . . . . .	7848	31567	6586	28139	3428	12.18%
Persons entering via motor vehicles, . . . . .	22096	90699	19617	86936	3763	4.32%
Persons entering via other private transportation, . . . . .	110	200	16	57	143	250.0%
Total persons entering via private transportation, . . . . .	22206	90899	19633	86993	3906	4.49%
<u>OTHER TRANSPORTATION:</u>						
Persons entering via stages, . . . . .	707	2773	589	2652	121	4.56%
Persons entering via trains, . . . . .	146	783	523	2714	-1931	-71.14%
Persons entering otherwise, . . . . .						
Total other transportation, . . . . .	853	3556	1112	5366	-1810	-33.73%
GRAND TOTAL ALL VISITORS, . . . . .	23059	94455	20745	92359	2096	2.26%

Notes:	This Year	Last Year	Increase	
			Number	Percent
Increase for month of April; 2,314 people or 11%				

Automobiles in public camps during month, . . . . .  
Campers in public camps during month, . . . . .

UNITED STATES  
DEPARTMENT OF THE INTERIOR  
NATIONAL PARK SERVICE

STATUS OF AUTHORIZED PROJECTS

..... Yosemite ..... National Park for the Month of April, 1931 .....

Description of Projects	Percent Constructed To Date	Percent Constructed This Month	Percent Constructed Last Month	Probable Date Completion
415 Misc. Buildings	100	2	1	
415 Nat. Cabin, Mariposa Grove	87	2	0	June, 1931
483 Camp Ground Development	10	10	0	August, 1931
487 Picnic Grounds	85	15	0	June, 1931
488 Merced River Revetment	8	8	0	September, 1931
489 Water System, Mariposa Grove (Share of Camp Construction)	2	2	0	August, 1931
495 New Sewer System	90	3	2	June, 1931
496 Sewer System Extension	92	2	0	June, 1931
498 Camp Ground Development	99	3	0	May, 1931
499 Water System, Tuolumne Meadows (Although " " " " is 50% complete, the 1932 setup is under another number for completion)	99	0	0	July, 1931
501.29 Floor of Valley Cleanup	100	3	0	
501.30 Road Traffic Signs & Marks.	84	2	2	June, 1931
501.31 Cascade Area Road Improvement	98	38	60	May, 1931
501.32 Ahwahnee Parking Area	70	70	0	May, 1931
501.35 Stoneman Bridge Sewer Siphon	100	5	25	
501.36 Floor of Valley Road Shoulders	8	0	0	August, 1931
502.10 Mariposa Grove Park. & Landsc.	90	10	0	June, 1931
505.1 Bridle Paths	94	7	2	May, 1931
506.5 Merced Lake Trail (portion) (New account number set up for remaining construction)	100	0	0	
506.7 Rock Cut to Nevada Falls	95	15	0	June, 1931
506.8 Oiling Rim Trails (Closed out)				
506.14 Chilnualna Trail	25	25	0	July, 1931
506.16 Trail Telephone	60	60	0	June, 1931
506.18 Mountain Trails	20	0	0	August, 1931

Note: Jobs not listed have either not been started or have been reported as complete.

UNITED STATES  
DEPARTMENT OF THE INTERIOR  
NATIONAL PARK SERVICE

STATUS OF PERSONNEL

.....Yosemite..... National Park for the month of .....April 1931.....

	This Month	This Month Last Year
Number of employees beginning of month,	299	91
Number of additions, . . . . .	121	110
Total, . . . . .	420	201
Number of separations, . . . . .	50	8
Number of employees close of month, . . . . .	370	193
Number of promotions during month	2	0
Aggregate amount of annual leave taken, . . . . .	254 $\frac{1}{2}$	212
Aggregate amount of sick leave taken, . . . . .	21	16
Aggregate amount of leave without pay, . . . . .	1	0

10-160

DEPARTMENT OF THE INTERIOR

NATIONAL PARK SERVICE

REPORT OF PARK REVENUES

Yosemite National Park for the Month of April

	This Year	Last Year
Park revenue on hand beginning of month, . . . . .	\$ 261.59	
Received, . . . . .	15,062.97	
Total, . . . . .	15,324.56	
Remitted, . . . . .	13,483.38	
On hand close of month, . . . . .	\$ 1,841.18	
<hr/>		
Park revenues received this year to date, . . . . .	\$163,984.68	
Park revenues received last year to date, . . . . .	198,693.31	
Increase, Decrease, . . . . .	\$ 34,708.63	
Per cent of <del>increase</del> , Decrease, . . . . .	17.46	

10-161

UNITED STATES  
DEPARTMENT OF THE INTERIOR  
NATIONAL PARK SERVICE

YOSEMITE NATIONAL PARK  
REPORT OF SALES OF PUBLICATIONS  
April 1931

	Number	Value
<u>GOVERNMENT PUBLICATIONS:</u>		
On hand beginning of month, .....	5326	\$810.80
Received during month, .....	0	0
Total, .....	5326	810.80
Sold during month, .....	161	55.05
On hand at close of month, .....	5165	755.75

NON-GOVERNMENT PUBLICATIONS:

On hand beginning of month, .....	
Received during month, .....	
Total, .....	
Sold during month, .....	
On hand at close of month, .....	

Cash on hand beginning of month, .....	299.25
Sales during month, .....	55.05
Total, .....	354.30
Remitted during month, .....	0
Balance, .....	354.30

## DEPARTMENT OF THE INTERIOR

## NATIONAL PARK SERVICE

## REPORT OF TELEPHONE AND TELEGRAPH BUSINESS

Yosemite National Park for the Month of April, 1931

	This Month	This Month Last Year	Increase	Percent Increase
<b>LOCAL BUSINESS</b>				
Miles of circuit maintained . . . . .	227	227	0	0
No. of telephones connected . . . . .	415	413	2	0
No. of measured service calls . . . . .	271	184	87	47
No. of other local calls . . . . .	31270	30852	418	1
Total No. of local calls . . . . .	31541	31036	505	2
Peak load in calls per day . . . . .	1547	1592	45	- 3
<hr/>				
Receipts from measured service calls . . . . .	12.95	20.40	- 7.45	- 37
Receipts from coin boxes . . . . .	108.45	5.80	102.65	1769
Receipts from telephone rental . . . . .	13.50	8.00	5.50	
	134.90	34.20	100.70	294
<hr/>				
TOTAL RECEIPTS				
<hr/>				
<b>LONG DISTANCE BUSINESS</b>				
No. Outbound calls . . . . .	787	633	154	24
No. Inbound calls . . . . .	626	594	32	5
<hr/>				
TOTAL LONG DISTANCE CALLS				
	1413	1227	186	15
<hr/>				
Peak load in calls per day . . . . .	75	71	4	6
Receipts from Long Distance business . . . . .	395.64	343.56	52.08	15
<hr/>				
<b>TELEGRAPH BUSINESS</b>				
Messages via Western Union . . . . .	1204	1466	- 262	- 17
Messages via . . <b>P.T.&amp;T.Co.</b> . . . . .	85	29	56	193
<hr/>				
TOTAL MESSAGES				
	1289	1495	- 206	- 13
<hr/>				
Receipts from telegraph business . . . . .	282.87	371.66	- 88.79	- 24
No. of money transfer messages . . . . .	25	19	6	32
No. of money transfer receipts . . . . .	16.07	12.26	3.81	30
<hr/>				
TOTAL RECEIPTS TELEPHONE & TELEGRAPH DEPT-	829.48	761.68	67.80	9

UNITED STATES  
DEPARTMENT OF THE INTERIOR  
NATIONAL PARK SERVICE

\*ELECTRICITY GENERATED, SOLD, USED, ETC.

**Yosemite** National Park for the Month of **April, 1931**

	This Month	This Travel Year To Date	This Month Last Year	Last Travel Year To Date	Increase for Travel Year	
					Number	Percent
Current generated, . . . . .	1389050	6668070	1104540	6249000	419070	+ 7
Sold to park operators, . . . . .	425659	1804143	277107	1856620	52477	- 3
Sold to others, . . . . .	627000	2197741	560017	2011717	186024	+ 9
Furnished to other Governmental agencies, . . . . .	10064	121034	19036	123547	2513	- 1
Used by National Park Service, lost in transit, etc., . . . . .	326327	2545152	248380	2257116	288036	+13
Total current generated, . . . . .	<u>1389050</u>	<u>6668070</u>	<u>1104540</u>	<u>6249000</u>	<u>419070</u>	<u>+ 7</u>

Amount receivable from the sale of electricity, in Valley, 1931 . . . \$ 5,095.46  
1930 . . . . . 3,995.66

\* Indicated by K. W. H.

Sold to San Joaquin Light & Power Corp. 426,189 k.w.h. = \$1033.03

U. S. Department of Agriculture, Weather Bureau.

MONTHLY SUMMARY.

TEMPERATURE.

COOPERATIVE OBSERVERS' METEOROLOGICAL RECORD:

Month of April, 1931; Station, Yosemite; County, Mariposa  
 State, Cal; Latitude, 37; Longitude, 119; Time used on this form, 4 PM  
 Hour of Observation, 4 PM

DATE.	TEMPERATURE.				PRECIPITATION.						CHARACTER OF WIND DIRECTION.	CHARACTER OF RISE IN SUNSET.	* MISCELLANEOUS PHENOMENA.	
	MAX. MOM.	MIN. MOM.	RANGE.	* SET MAX.	TIME OF BEGINNING.	TIME OF ENDING.	AMOUNT.	SNOWFALL IN INCHES.	DEPTH OF SNOW ON GROUND AT OBSERVATION.	PREVAILING WIND DIRECTION.				
1	72	34										clear		
2	70	33										clear		
3	71	33										P. Cloudy		
4	72	34										P. Cloudy		
5	70	34										Cloudy		
6	72	35										clear		Warm spring day
7	74	33										clear		
8	75	27										clear		
9	77	36										clear		
10	76	31										clear		
11	70	32										clear		Spy overcast AM
12	67	37										Cloudy		
13	64	34										P. Cloudy		
14	66	29										P. Cloudy		
15	75	35										clear		
16	79	37										clear		
17	79	40										clear		
18	80	41										clear		
19	80	40										clear		
20	86	45										clear		
21	85	46										clear		
22	75	39										cloudy		clear AM
23	46	30										cloudy		cloudy PM
24	55	32										P. Cloudy		
25	64	32										P. Cloudy		
26	57	38										P. Cloudy		
27	61	39										P. Cloudy		
28	69	44										P. Cloudy		
29	72	53										P. Cloudy		
30	75	37										clear		Spy overcast
31														
SUM	2132	1055												
MEAN	71.02	35.2												

\* Reading of maximum thermometer immediately after setting.  
 † Including rain, hail, sleet, and melted snow.  
 ‡ Thunderstorms, hails, auroras, etc.

(IN TRIPLICATE.)

See cover for instructions.

8-323  
 COOPERATIVE STATION OFFICE

Post-Office Address,

Office of Chief Ranger  
 Yosemite National Park, Calif.

F. S. Yarnall, W. H. H.  
 Cooperative Observer.

Mean maximum, 71.07

Mean minimum, 35.2

Mean, 53.13

Maximum, 86; date, 30

Minimum, 27; date, 8-12

Greatest daily range, 48

Total, 2.57 inches.

Greatest in 24 hours, 1.32; date, 23

Total snowfall, 0 inches; on ground 15th, \_\_\_\_\_ inches;

at end of month, \_\_\_\_\_ inches.

NUMBER OF DAYS—

With .01 inch or more precipitation, 7

Clear, 16; partly cloudy, 10; cloudy, 4

DATES OF—

Killing frost, \_\_\_\_\_

Thunderstorms, \_\_\_\_\_

Hail, \_\_\_\_\_

Sleet, \_\_\_\_\_

Auroras, \_\_\_\_\_

REMARKS:

Total precipitation to May 1st.

This season 17.32

last " 24.16

Snowfall this season 11 1/2 inches

last " 72.8