

YOSEMITE NATIONAL PARK

CALIFORNIA

207-002.3

SUPERINTENDENT'S MONTHLY REPORT

December 1929

UNITED STATES
DEPARTMENT OF THE INTERIOR
NATIONAL PARK SERVICE
YOSEMITE NATIONAL PARK
CALIFORNIA

OFFICE OF THE SUPERINTENDENT

January 1, 1930

The Director
National Park Service
Washington, D. C.

Dear Mr. Director:

The following is a report of the activities in Yosemite National Park during the month of December, 1929.

000 - General

December has been unusually clear and warm. One week of rainy weather, December 9th to 16th added 3.4 inches of rain to the season's total precipitation. A good blanket of hard crusted snow covers the high Sierras above the 8,000 foot level; snow is found only in patches below that altitude.

Travel figures for the month showed a decided loss as compared with December of last year. This is undoubtedly due to the fact that no snow has fallen on the Valley floor during the entire month.

The roads to the Mariposa Grove and Hetch Hetchy have been open nearly all of December. The Tioga Road was closed on December 8th and all checking stations on mountain roads closed on that date.

100 - Administrative

110 - Status of Work

Office: Office work has been kept practically up to date despite the fact that all temporary employees have been separated from the service and two permanent vacancies - personnel clerk and clerk-stenographer - have not yet been filled.

Construction and Maintenance: With the completion of all going jobs on the 16th of December, all construction work was closed down for the winter.

The few permanent men remaining in the Maintenance Division have been engaged in necessary winter preparations, maintenance of water and sewer systems, general repairs, overhauling, etc..

120 - Park Inspections by:

121 - Superintendent

The Superintendent made customary inspections of all going jobs in the high country and on the floor of the Valley.

123 - National Park Service Officers

Superintendent Sam Woodring, accompanied by Mrs. Woodring, arrived in the Valley December 26th and departed December 28th.

Superintendent E. C. Solinsky of Crater Lake Nat'l Park and Special Representative F.J. Solinsky arrived in Yosemite December 31st in connection with timber and land exchanges. They departed the following day.

130 - Finance and Accounts

The following is a statement of the status of the various appropriations handled by the Park:

Appropriation	Allotment	Expended & Obligated	Unencumbered Balance
Nat'l Park Service 1929-30	\$ 365,476.78	\$ 343,736.60	\$21,740.18
Roads & Trails, Nat'l Park Serv.	1,825,967.68	1,754,827.03	71,140.65

140 - Labor Situation

A comparatively small amount of labor has been needed during the month due to curtailment of all but the most essential activities.

150 - Equipment and Supplies

No new equipment or supplies received during December.

160 - Status of Alienated Lands

Nothing new to report.

170 - Plans, Maps, and Surveys:

Associate Engineer A. E. Cowell made plane table surveys of the Mirror Lake and Happy Isles Parking areas and brought the 1 inch to 200 foot maps up to date by adding to them these and the Camp Curry Parking area layout as well as the winter camp ground.

A resurvey of the Degnan property was made by Mr. Hilton, permanent monuments were placed and the plat tracing prepared for approval. Establishment of the Yosemite Park and Curry Company property lines is necessary before their surveys can be started.

200 - Maintenance, Improvements, and New Construction

210 - Maintenance

All maintenance work was cut to the very minimum during December, all work being accomplished by the few permanent men remaining during the winter.

220 - Improvements

Roads and Trails

No work was done on roads or trails except to keep them free of slides and rocks.

Sanitation, Water and Sewer Dept.

The Valley water supply crisis was broken by the first rain of the season, December 7th. It was also necessary to place the Glacier Point water system in operation for a few days to insure an adequate supply for the winter months. The usual small repairs were made to the water and sewer system.

Carpenter Shop

Work has been cut to a minimum in this Department, only the most urgent repairs receiving attention.

Engineering Department:

The Engineering Department supervised the completion of the Superintendent's new residence, the Vernal Falls Bridge, and many other small jobs incidental to closing down operations for the winter.

Electrical Department:

All electrical equipment, including the wiring and service connections have been completed on the Superintendent's new residence; several new transformers were installed; the comfort station near the toboggan slide was equipped with heaters to prevent it from freezing; and various maintenance jobs were taken care of by this department. Lightning and wind caused an interruption in the electrical service twice during the month.

Machine Shop:

Overhauling of equipment was continued throughout December by the machinists. Two snow plows were put in readiness for the first delayed snowfall and one plow was made available for foot path clearance. It was also necessary for the mechanical department to remove the Pelton turbine from its foundation in the Power House and ship the scroll to San Francisco for repairing. This turbine was broken due to vibration or water hammer.

Sanitation Department

The usual repairs and maintenance were made to the water system; employees' residences were drained when they were absent on annual leave; due to shortage of help no work has been done in cleaning of sewer lines.

230 - New Construction

The new hospital was put into operation on December 21, when Dr. Hartley G. Dewey took over his new duties as medical officer of Yosemite Park.

The new superintendent's residence was completed and is now occupied.

Vernal Falls Bridge was completed on December 9th with the exception of the center guard rail and all men working on the structure laid off.

Wawona Road Clearing:

Three thousand feet on the third unit were cleared and five thousand feet of burning was completed on the fourth unit. The camp was dismantled on the 18th of December.

240 - Improvement of Approaches to the Park

The State construction work has been discontinued on approach roads to the Park; however, all of the roads are in exceptionally fine condition.

260 - Landscaping

The entrance road to the Superintendent's residence was considerably narrowed and made less conspicuous, adding greatly to the landscape appearance at that point.

Mr. John Wosky, Landscape Architect, returned to the San Francisco office on December 16.

300 - Activities of other agencies in the Park

310 - Public Service Contractors

Best's, Boyesen's, and Foley's photographic studios were open daily throughout the month.

The Yosemite Park and Curry Company have completed their new toboggan and ice rink. The rink is now in use and greatly enjoyed by enthusiastic skaters; the toboggan is not faring so well due to lack of snow.

The Company reports a 25% decrease in housecounts during December because of the fact that no snow has fallen.

320 - Cooperating Governmental Agencies

Reconstruction work on the Wawona Road being done under the Supervision of the Bureau of Public Roads was closed down this month and all employees of the B.P.R. moved to their San Francisco and Oakland headquarters.

400 - Flora, Fauna, and Natural Phenomena

410 - Ranger, Naturalist, and Guide Service:

All rangers reported back from annual leave by the first week of December. With the arrival of the first snow storm in the high country on December 8th all the fire patrol Fords and all checking rangers were brought in and the stations closed for the winter. Snow patrol cabins were stocked with food supplies and

blankets. Rangers have also assisted in overhauling of fire equipment and preparations for the winter sports at "Ash Can Alley". Fourteen permanent rangers and one temporary man were on duty throughout December.

Naturalist and Guide Service

Due to the absence of the Asst. Park Naturalist, Park Naturalist, Harwell, was on duty throughout December alone. Field Naturalist, Carl P. Russell, was at Yosemite December 1st to 16th; he devoted this time to research at the Museum on the early history of Yosemite.

Lectures have been arranged at Yosemite Lodge on Wednesday and Friday evenings. Many of the Park visitors show great enthusiasm in these interesting and educational lectures.

The Museum has been kept open daily from 8:00 a.m. to 5:00 p.m.

440 - Insect Control

No work done during December.

460 - Birds

A Pacific Loon was observed in the Merced River December 6th to 10th. This is the first record of this bird for Yosemite.

A Golden Eagle was seen soaring above the north wall of the canyon below El Capitan December 27th. One of these birds has been seen on several occasions above the Arch Rock Checking Station.

California Woodpeckers and Blue-fronted Jays are very common about the Valley floor.

470 - Animals

Bears have ceased their depredations and have peacefully gone into hibernation. While a very few have been seen about the Valley, they seem to all be on the strictest diet. Even tempting sweets were refused by these animals.

Although the weather for the month has been mild, the deer above the rim have moved down to lower and warmer ridges.

Coyotes have been rather numerous in the vicinity of Glacier Point and are frequently heard during the night.

A California Wildcat was struck and killed by an automobile in the vicinity of El Capitan December 22.

This animal enjoys the distinction of being the first "bob-cat" casualty on record in Yosemite National Park.

500 - Use of Park Facilities by the Public

Although travel to the Park has been very light during the month, those using the new winter camp ground have been very appreciative of the conveniences offered there.

The new ice rink at Camp Curry, which is in excellent condition now, due to cold weather and lack of snow, is being well patronized.

510 - Increase or Decrease in Travel

6,470 visitors entered Yosemite Park during December 1929 compared with 9,757 during December 1928 -- a loss of 3,287 people or 33.7%. This loss in travel is probably entirely due to lack of snowfall during the month. Every week has shown a loss in travel, the weekly percentage losses being 4%, 10%, 26% and 36%.

520 - General Weather Conditions

This is the only year, with the exceptions of 1910 and 1917 that no snow has fallen in the Valley up to the first of January. The snowfall to date last year was 17 inches; normal to date 24 inches. Minimum temperature during the month was 25 degrees, maximum 65 degrees. A total rainfall of 3.4 inches fell during the week, December 9th to 16th.

540 - Visitors

Mr. Kenneth Durant, Russian News Service representative was an interested visitor in Yosemite December 9th and 10th.

On December 1st Park Naturalists Edwin McKee of Grand Canyon accompanied by his mother, Dorr G. Yeager of Yellowstone accompanied by his wife, and Dr. George C. Ruhle of Glacier Park arrived for a three day visit. At the suggestion of Chief Naturalist Hall, they came from the Conference of Park Naturalists at Berkeley to study the Yosemite educational program.

Mr. Frederic Kennard, Associate Director of the Museum of Vertebrate Zoology at Harvard University was a visitor to Yosemite December 7th, 8th and 9th.

Field Naturalist Mr. Joseph Dixon arrived December 14th to study deer of the Valley floor.

550 - Public Camps

The new winter camp ground adequately cared for all tourists who wished to set up their own camps.

600 - Protection

610 - Police Protection

December was a very quiet month despite the holiday season. No arrests were made during the month.

620 - Fire Protection

On December 19th the oil pump back of Yosemite Lodge caught fire; it was quickly extinguished without serious damage.

630 - Accidents

None

640 - Destruction of Predatory Animals

State lion hunter, Mr. Jay Bruce, has been working near the Park lines in the vicinity of Crane Flat and Big Meadows. Altho he has found tracks, he has made no kills.

660 - Sanitation

Analyses of water samples taken during December have been entirely satisfactory. Milk samples were not taken.

900 - Miscellaneous

Church Services

Protestant church services were held each Sunday in the chapel. Catholic services which have for the past several weeks been held in the Government pavilion will not be conducted in the chapel each Sunday at nine o'clock.

Medical Service

Through the courtesy of the Commanding Officer of the Presidio, Major Mackie of the Letterman Hospital took over the Yosemite medical service for a short time in December. He was later relieved by Lieutenant Pruitt, also of Letterman hospital, who remained on duty until the arrival of Dr. Hartley G. Dewey, the new Park medical officer, December 19th. The old hospital was abandoned December 21st when all equipment was moved to the newly constructed hospital - a very modern and well equipped building of which we are justly proud.

A total of 187 office calls and 32 house calls were handled by the medical staff during December. There were 19 minor operations performed.

Dr. G. A. Hunt, who has been in charge of the Yosemite hospital during the past three years, left the Service on December 5.

In a further effort to keep the All-Year Road entirely free of rock slides, a light Ford delivery truck has been assigned to the Arch Rock checking station for the balance of the winter season. The rangers on duty at this station will thus be able to remove many rocks from the road which otherwise would have to be removed by men sent from headquarters.

For several weeks rumors have been prevalent that the Richfield Oil Company had leased the Cascade holdings (within the Park boundary) and intended to erect a service station on the site. These rumors were substantiated by the discovery of a survey party in that vicinity. The men were brought to headquarters and the Richfield officials in Merced notified that they would not be permitted to erect a service station within the Park. After a personal discussion of the situation with the Superintendent this Company has decided to withdraw their project in this vicinity.

Mr. A. T. Moen arrived at the end of the month to take over the duties of warehouseman by transfer from his Chief Clerkship at Crater Lake.

The Yosemite Park and Curry Company has suffered heavy financial losses through the lack of snow and consequent falling off of patronage; winter sports have received something of a setback in this entire region this year. We understand that at Lake Tahoe there were only twenty-three guests at Christmas time and that they have closed the hotel temporarily.

Finally, it has been a very busy and difficult month due, to some degree, to the absence of so many employees on leave.

Very respectfully,

EB

Superintendent

10-157
UNITED STATES
DEPARTMENT OF THE INTERIOR
NATIONAL PARK SERVICE

TRAVEL REPORT

YOSEMITE National Park for the Month of DECEMBER, 1928

	This Month	This Travel Year To Date	This Month Last Year	Last Travel Year To Date	Increase for Travel Year Oct. 1 to Dec. 31st.	
					Number	Per cent
<u>PRIVATE TRANSPORTATION:</u>						
Cars first entry.	969	4019	1451	3711	508	8.3 %
Cars reentry.	1108	5159	1332	4655	504	10.8 %
Motorcycles.	1	15	8	24	-9	-37.5%
Total motor vehicles.	2078	9193	2791	8390	803	9.6 %
Persons entering via motor vehicles.	6021	26163	9204	25341	822	3.2 %
Persons entering via other private transportation.	2	39	0	2	37	1850 %
Total persons entering via private transportation.	6023	26202	9204	25343	859	3.4 %
<u>OTHER TRANSPORTATION:</u>						
Persons entering via stages . . .	109	1294	252	1113	181	16.3 %
Persons entering via trains . . .	258	1153	301	913	240	26.3 %
Persons entering otherwise. . .						
Total other transportation. . .	447	2447	553	2026	421	20.7 %
GRAND TOTAL ALL VISITORS. . .	6470	28649	9757	27369	1330	4.7 %

Decrease in visitors for the month of December 33.7 % (3,287 people)

	This Year	Last Year	Increase	
			Number	Per cent

Automobiles in public camps during month
Campers in public camps during month

UNITED STATES
DEPARTMENT OF THE INTERIOR
NATIONAL PARK SERVICE

STATUS OF PERSONNEL

Yosemite National Park for the month of December, 1929

	This Month	This Month Last Year
Number of employees beginning of month	125	112
Number of additions	14	3
Total	139	115
Number of separations	46	13
Number of employees close of month	93	102
<hr/>		
Number of promotions during month	0	1
<hr/>		
Aggregate amount of annual leave taken	286 $\frac{1}{2}$	311-5/8
Aggregate amount of sick leave taken	26	19 $\frac{1}{2}$
Aggregate amount of leave without pay	31	16

10-160

DEPARTMENT OF THE INTERIOR

NATIONAL PARK SERVICE

REPORT OF PARK REVENUES

Yosemite National Park for the Month of December 1929

	This Year	Last Year
Park revenue on hand beginning of month,	-----	
Received,	3173.18	
Total,	\$3173.18	
Remitted,	3173.18	
On hand close of month,	=====	

Park revenues received this year to date, \$151499.36

Park revenues received last year to date, 153615.88

~~##### Increase~~ **Decrease** 2116.52

Per cent of ~~increase~~ **Decrease** 1.38%

10-161

UNITED STATES
DEPARTMENT OF THE INTERIOR
NATIONAL PARK SERVICE

REPORT OF SALES OF PUBLICATIONS

December 1929

	Number	Value
<u>GOVERNMENT PUBLICATIONS:</u>		
On hand beginning of month,	2185	\$ 307.25
Received during month,	335	30.00
Total,	2520	337.25
Sold during month,	437	39.50
On hand at close of month,	2083	297.75
<u>NON-GOVERNMENT PUBLICATIONS:</u>		
On hand beginning of month,		
Received during month,		
Total,		
Sold during month,		
On hand at close of month,		
Cash on hand beginning of month,		\$ 887.20
Sales during month,		39.50
Total,		926.70
Remitted during month,		---
Balance,		\$ 926.70

UNITED STATES
DEPARTMENT OF THE INTERIOR
NATIONAL PARK SERVICE

REPORT OF TELEPHONE AND TELEGRAPH BUSINESS

Yosemite

National Park for the Month of December 1929

	This Month	This Month Last Year	Increase	Percent Increase
--	---------------	----------------------------	----------	---------------------

LOCAL BUSINESS

Miles of circuit maintained,	200	179	+ 21	+ 11
No. of telephones connected,	413	222	+ 191	+ 86
No. of measured service calls,	269	213	+ 56	+ 26
No. of other local calls,	27259	30713	- 3454	- 11
Total No. of local calls,	27528	30926	- 3398	- 11
Peak load in calls per day,	1441	1853	- 412	- 22

Receipts from measured service calls,	\$17.90	\$ 11.05	+ \$ 6.85	+ 61
" " coin boxes,	3.20	1.60	+ 1.60	+ 100
" " telephone rental,	---	489.05	---	---
TOTAL RECEIPTS	\$21.10	\$501.70	- \$480.60	- 95

LONG DISTANCE BUSINESS

No. Outbound calls,	488	486	+ 2	+ 0
No. Inbound calls,	294	353	- 59	- 16
TOTAL LONG DISTANCE CALLS	782	839	- 57	- 8
Peak load in calls per day,	60	85	- 23	- 27
Receipts from Long Distance business,	\$213.36	\$229.32	- \$15.96	- 7

TELEGRAPH BUSINESS

Messages via Western Union,	1422	1528	- 106	- 7
Messages via	19	48	- 29	- 60
TOTAL MESSAGES	1441	1576	- 135	- 9
Receipts from telegraph business,	\$355.77	\$384.18	-\$28.39	-7
No. of money transfer messages,	17	20	- 3	-15
" " " " receipts,	\$9.88	12.47	- 2.59	-20
TOTAL RECEIPTS TELEPHONE & TELEGRAPH DEPTS-	\$600.11	\$ 1127.64	- \$527.53	-47

UNITED STATES
DEPARTMENT OF THE INTERIOR
NATIONAL PARK SERVICE

*ELECTRICITY GENERATED, SOLD, USED, ETC.

Yosemite National Park for the Month of December 1929.....

	This Month	This Travel Year To Date	This Month Last Year	Last Travel Year To Date	Increase for Travel Year	
					Number	Percent
Current generated,	121900	3073570	147615	2921530	+ 152040	+ 5
Sold to park operators, . . .	9105	876489	--	795394	+ 81095	+ 10
Sold to others,	2600	1282800	1400	1340600	- 57800	- 4
Furnished to other Governmental agencies,	18677	40147	16140	41089	- 942	- 2
Used by National Park Service, lost in transit, etc., . . .	91518	874134	156675	744447	+ 129687	+ 17
Total current generated, . .	121900	3073570	147615	2921530	+ 152040	+ 5

Amount receivable from the sale of electricity, \$ 97.88.....

* Indicated by K. W. H.

Purchased from S. J. L. & P. Corp. - 594782

U. S. Department of Agriculture, Weather Bureau.

MONTHLY SUMMARY.

TEMPERATURE.

COOPERATIVE OBSERVERS' METEOROLOGICAL RECORD:
Month of DECEMBER 1929, Station, YOSEMITE CALIF.
State, CALIF.; Latitude, 31; Longitude, 119
Hour of Observation, 4 P.M.
P.M. P.C.

DATE.	TEMPERATURE.				PRECIPITATION.						CHARACTER OF DAY OR NIGHT.	MISCELLANEOUS PHENOMENA.
	MAX. MIN.	RANGE.	* SET.	TIME OF BEGINNING OF ENDING.	TIME OF BEGINNING OF ENDING.	AMOUNT.	SNOWFALL, IN INCHES.	DEPTH OF SNOW ON GROUND AT TIME OF OBSERVATION.	PREVAILING WIND DIRECTION.	PREVAILING WIND VELOCITY.		
1	62	25									clear	
2	61	23									P. cloudy	
3	60	26									"	
4	65	35									clear	
5	64	26									"	
6	62	23									cloudy	
7	61	24									"	
8	61	23									"	
9	52	41					1.13				"	
10	47	41					1.15				"	
11	49	30					.05				"	
12	54	39					.25				clear	
13	54	39					.34				cloudy	
14	55	30									"	
15	53	31					.15				"	
16	52	35					.33				"	
17	53	40					trace				"	
18	56	34									"	
19	57	32									clear	
20	54	28									"	
21	52	27									"	
22	50	22									"	
23	50	24									"	
24	53	28									"	
25	57	25									"	
26	52	26									"	
27	56	25									"	
28	53	32									"	
29	54	29									"	
30	56	31									"	
31	54	30									"	
MEAN							3.4"	none	none			

* Reading of maximum thermometer immediately after setting.

† Including rain, hail, sleet, and melted snow.

‡ Thunderstorms, hail, auroras, etc.

(IN TRIPLICATE.)

See cover for instructions.

U.S. DEPARTMENT OF AGRICULTURE

Post-Office Address, YOSEMITE NATIONAL PARK, CALIF.

P. S. POWELL

Cooperative Observer, Chief, Yosemite National Park, California.

Mean maximum, 55.54

Mean minimum, 30.22

Mean, 42.88

Maximum, 65; date, 4th

Minimum, 23; date, 2, 6 th

Greatest daily range, 48

PRECIPITATION.

Total, 3.4 inches.

Greatest in 24 hours, 1.15; date, 10th

SNOW.

Total snowfall, none inches; on ground 15th, 0 inches;

at end of month, none inches.

NUMBER OF DAYS—

With .01 inch or more precipitation, 7

Clear, 18; partly cloudy, 2; cloudy, 1

DATES OF—

Killing frost, Dec. 15

Thunderstorms, Dec. 15th

Light, Dec. 15th

Hail, Moderate, Dec. 15th

Heavy, Dec. 15th

Sleet, Dec. 15th

Auroras, Dec. 15th

REMARKS:

Only two other years (1910 and 1917) were entirely free from snow fall up to Jan. 1st.

Temperatures for December 192

averaged 8 degrees warmer than

December 1928.

Form A

SUMMARY OF EDUCATIONAL ACTIVITIES

~~Yosemite National Park~~

Station or Park

Week
For month ending December 31, 19 29
~~SPRING~~

Place	Field Trips		Lectures		Museum	Publications Distributed		Total Persons Served	Park Visitors During Period
	No.	Attend.	No.	Att.	Att.	No.	Sales		
Yos. Lodge			7	300				300	
Rangers Club			2	120				120	
Special	5	18						18	
Museum			2	36	4000	192	61.15	4036	
Santa Monica Boy Scouts	2	46						46	
Auto Caravan	2	27						27	
Totals	9	91	11	456	4000	192	61.15	4547	6470

General Memoranda

Submitted December 31, 19 29

Signed: 

Park Naturalist
(Title)

UNITED STATES
DEPARTMENT OF THE INTERIOR
NATIONAL PARK SERVICE
YOSEMITE NATIONAL PARK
CALIFORNIA

OFFICE OF THE SUPERINTENDENT

December 19, 1929

Office Memorandum:

Receipt of Supplies from Warehouse

Effective from this date, insofar as practicable the warehouse will deliver all supplies directly to the job instead of having the employees call at the warehouse for the supplies.

Requisitions for supplies should be prepared in duplicate and left at the warehouse not later than 9 a.m. of the day on which delivery is wanted. The duplicate will be priced and returned to the department head for his information.

Ordinarily there is no excuse for emergency requisitions but if such need actually arises the order should be telephoned to the warehouse and delivery will be made at once.

It is desired to reduce the number of requisitions to the minimum. Therefore all employees are earnestly requested to anticipate their needs and to requisition a week's supply at one time. Small articles should be ordered in package lots whenever practicable, etc.

The cooperation of all concerned in reducing the warehouse expenses is respectfully requested.

C. G. Thomson
Superintendent

U.S. DEPARTMENT OF THE INTERIOR
NATIONAL PARK SERVICE
YOSEMITE NAT'L PARK, CALIFORNIA

From-

James V. Lloyd.

ASST. TO THE SUPT.

Yosemite, Dec. , --- The first of the winter visitors reaching here for the holidays, have expressed amazement at the major improvements in the winter sport facilities.

The new 60,000 square foot outdoor ice rink near Camp Curry comes first in visitor interest. This is the largest outdoor rink on the Pacific Coast and was opened with a colorful ceremony Christmas Day. All forms of ice sports can be enjoyed on this huge rink at the same time, due to the experienced planning of E. Des Baillets, winter sport director of the Yosemite Winter Club, who designed the great rink. It is divided into three smaller rinks, with a space for the fast and exciting game of ice hockey; a general rink three times larger than any of the indoor rinks in California, with an area in the center reserved for figure skating; and a rink set aside for the Scotch game of curling now being introduced into this state for the first time. During the California Speed Skating Championship races to be held here on January 24 and 25th; the whole rink will be turned into an 8-laps-to-the mile course. If found necessary, a similar plan will be followed during the Pacific Coast Intercollegiate winter games planned here for February 13, 14 and 15th., with the leading colleges of the Pacific Coast competing for the beautiful silver trophy recently sponsored by President Herbert Hoover, to encourage the development of winter sports in Yosemite National Park.

At the colonial entrance to the skating rink, our small attractive buildings of the Northern Scandinavian type, designed by E. T. Spencer, are found. These buildings serve as the equipment rental headquarters, for try-on rooms, where the visitors don their skates and in addition a large ~~check~~^{club} room for the convenience of the skaters, will be located close to the rink. The whole area is brilliantly lighted at night, so as to permit even the playing of match hockey games. The Yosemite Winter Club team composed of the best local skaters, is planning both day and night competitions with visiting hockey teams during the coming winter. Grand stands located on the north side of the rink seat 500 and will be used principally during the hockey games and on evenings when the attractive costume carnivals on ice are scheduled.

In place of the two track toboggan slide of last year, this season finds a four track toboggan illuminated with many colored lights for night use. With the installation of an improved escalator to convey the toboggan and passengers to the top, experts declare the local slide to be one of the best in the country. Close to the big toboggan is found Ash Can Alley - where one enjoys a slide on the top of an ash can lid. Last season more than 9,000 people in a single day, took their slide on Ash Can Alley, breaking the local sliding records for all times.

A half-mile ski-joring track has been laid out in Stoneman Meadow for ski-joring, and horses trained in this sport are now available in Yosemite, for future ski-joring races. A small ski hill has been selected and ski enthusiasts can enjoy ski coasting. Nearby a small sled course is to be maintained for the children. Sleigh riding is expected to be much more popular this year than last and the number of horse drawn sleighs and cutters have been doubled.

James B. Fritz, well known dog team driver of Truckee and his 35 Canadian and Malamute Newfoundland dogs will be available for visitors at all times. There will be two dog teams operating over a one mile course, in the winter sports area.

One of the most attractive sport events during the coming winter, will be the six day ski trips into the High Sierra region of Yosemite, under the guidance of a Swiss expert, Jules Fritsch. He will lead the ski-parties up the Tenaya Lake trail to the Snow Creek ski lodge on the first day; the second will include a jaunt across the snowfields to Tenaya Lake, where a second ski lodge will be found also providing sleeping accommodations, fuel and food. The third day will be made over the snow blanketed Tioga Road to Tuolumne Meadows. The party will retrace their steps on the fourth day.

A trained staff of winter sport experts are now available in Yosemite under the direction of E. Des Baillets. They are Gordon Hooley, former junior ski champion of Canada; Jules Fritsch, a ski expert from Switzerland, Ralph De Pfeiffer, a well known skating instructor from Switzerland and Douglas Duffy exhibition figure skater and hockey coach from Los Angeles.

UNITED STATES DEPARTMENT OF THE INTERIOR
NATIONAL PARK SERVICE
YOSEMITE NAT'L PARK? CALIFORNIA

From-

James V. Lloyd.

Asst. to the Supt.

YOSEMITE, Dec. , -- The announcement that the first outdoor speed skating meet held in California is scheduled here for January 25 and 26th; has created a great interest in the first amateur speed skating contests to be held in California under the auspices of the Amateur Skating Union of the United States. E. Des Baillets, Secretary of the recently organized California Skating Association said today:-

"All of the Eastern and Middle West skating associations are extremely enthusiastic over the first amateur speed skating meet. The Middle Atlantic Association, the governing body for the State of New York and New Jersey; and the Michigan Skating Association have already agreed to sponsor the sending of some of their best skaters. Among the entrants likely to be sent is Irving Jaffe of New York, world's record speed skating champion for one mile. The Michigan Skating Association according to word just received from the secretary of the organization, will send both men and women competitors. From Canada, the organizing committee is endeavoring to secure Charles I. Gorman, world record holder and Canadian champion for years."

The California Speed Skating Championship races will include 440 and 880 yard dashes, 1 mile, 2 mile and 5 mile races for seniors. Other events will be scheduled for juniors, ladies and back-waltz skating. Many skaters from San Francisco, Los Angeles and Seattle are expected to represent the Pacific Coast in the meet.

From-

James V. L. d.
Asst. to Sup. Intendant

U.S. DEPT. OF THE INTERIOR
NATIONAL PARK SERVICE
YOSEMITE NAT'L PARK, CALIFORNIA

YOSEMITE, Dec. , -- The son of a screen hero - he will soon face real dangers daily, while his illustrious Dad will be facing only the reel hazards of Hollywood! Such is Rinson, four month old son of the famed, canine movie star, Rin-Tin-Tin.

Lee Duncan, self described as "Owner and Friend of Rin-Tin-Tin", while on location here last summer with the popular movie dog, learned of the difficulty Superintendent C. G. Thomson of Yosemite National Park, was experiencing in controlling the 65 untamed bears living in Yosemite Valley. The bruins persisted in their disregard for "Keep Out" signs posted in the residential and camping areas of the Valley. A thousand complaints were filed during the summer, by the visitors who enjoyed feeding the bears during the day, but fail to appreciate their nightly visits. The National Park Service enlarged the bruins outdoor dining room, two miles west of the camping areas and served more table scraps - still the bear raids continued! Finally Duncan sought out Superintendent Thomson and offered to present the National Park Service with one of Rin-Tin-Tin's sons to educate the Yosemite bears.

"I believe the puppy Rinson," said Duncan, "will soon teach the bears to keep their place. If he takes to his training like Rin-Tin-Tin, the Valley bruins will all be devoting their entire time to eating and entertaining, in the neighborhood of the outdoor dining room. There'll be no more need to post keep out signs for the bears!"

Rinson arrived last week. His first encounter with a bear resulted in a hasty retreat to the lower end of the Valley on the part of the bear. Superintendent Thomson says Rinson is as cool under fire as Rin-Tin-Tin is in front of a movie camera, and twice as effective as his Dad, when bears form the supporting cast!

U.S. DEPARTMENT OF THE INTERIOR
NATIONAL PARK SERVICE
YOSEMITE NAT'L PARK, CALIFORNIA

From-
James V. Lloyd.
Asst. to the Supt.

YOSEMITE, Dec. , -- Strange as it may seem, when winter reigns on the south side of Yosemite Valley, a half-mile away on the north side, "summer" holds sway.

The south half of the Valley is hidden from the sun by Glacier Point, making it about ten degrees colder than the north side. This dual climate gives the visitors a choice of winter sports in the Camp Curry region or other forms of recreation in the Ahwahnee - New Village area.

Early in December after the sun has disappeared behind Glacier Point, the Merced River freezes and visitors enjoy ice skating on the south side while others in the northern area shed their warm wraps. During December, January and February, the entire south side is shaded from the sun, making conditions ideal for winter sports.

The "Dr. Jekyll and Mr. Hyde" climate of Yosemite Valley is a great benefit to the thousands of winter sport enthusiasts. Following a morning spent in the winter sport zone, they return to the north side to enjoy in the warm rays of Old Sol.

From-

James V. Lloyd.

Asst. to the Supt.

U.S. DEPARTMENT OF THE INTERIOR
NATIONAL PARK SERVICE
YOSEMITE NAT'L PARK, CAL.

YOSEMITE, Dec. , -- The Yosemite Museum is in receipt of a Thomas Hill painting of Nevada Falls from Stephen T. Mather, former director of the National Park Service. Hill was an early day Yosemite artist and his pictures are highly prized.

00-00

YOSEMITE, Dec. , -- The memory of "~~the fallen monarch~~" a fallen monarch of the Mariposa Grove of Big Trees is to be perpetuated. Supervisor Frank B. Ewing has removed several slabs from the toppled giant and brought them to the Valley where they will be made into tables and benches for the Yosemite Museum.

00-00

YOSEMITE, Dec. , -- The Yosemite Museum is to have a new pair of old shoes. Theodore J. Hoover, brother of President Herbert Hoover and Dean of Mining College at Stanford University has presented a pair of ox shoes used in the early days at Bodie.

00-00

YOSEMITE, Dec. , -- A beautiful specimen of rose quartz from Cold Mountain was contributed to the Yosemite Museum by William Colby, Secretary of the Sierra Club, during the past month, according to Park Naturalist Bert Harwell.

00-00

From-

James V. Lloyd.
Asst. to the Supt.

U.S. DEPARTMENT OF THE INTERIOR
NATIONAL PARK SERVICE
YOSEMITE NAT'L PARK, CALIF.

Yosemite, Dec. , -- Stephen T. Mather, former Director of the National Park Service, in a recent letter to Superintendent C. G. Thomson of Yosemite, said he had improved sufficiently from his recent illness to permit a trip from the Mather home estate at Darien, Conn., to his Chicago home for the Christmas period. Mather's letter also conveyed the cheering news that after the holidays he planned to come to California, his native state.

Yosemite, Dec. , -- Steps have recently been taken by Park Superintendent C. G. Thomson, to preserve two famous trees in Yosemite. One, the Giant Yellow Pine, on the south side of Yosemite Valley, was suffering from too much popularity. Motorists frequently drove their automobiles too close to the tree, so that the soil around its base, became closely packed. During the past month, the soil covering the tree's roots, was loosened and rich dirt added. The former road leading to the tree, was relocated as a further protection against injury to the root system from automobiles.

The second tree, the wind-blown Jeffery Pine on top of Sentinel Dome, near Glacier Point, had its exposed roots covered with humus and granite sand. Every effort will now be made to restrain visitors from climbing into and carving, the weather-beaten old tree. The Educational Department of the National Park Service, plans to maintain a register near the tree for visitors desiring to leave their names behind.

From-
James V. Lloyd.
ASST. TO THE SUPT.

U. S. DEPARTMENT OF THE INTERIOR
NATIONAL PARK SERVICE
YOSEMITE NAT'L PARK, CALIF.

Yosemite, Dec. , -- Superintendent C. G. Thomson today announced all automobile permits purchased while entering Yosemite National Park this month, would be classed as 1930 permits. This action, he explained, enabled motorists to enter Yosemite during the present month with either 1929 or 1930 license plates and secure an automobile permit good throughout 1930.

Yosemite, Dec. , -- Gray squirrels are returning to the park after an absence of five years. Park Naturalist Bert Harwell reports the friendly little gray fellows, as having been seen near El Capitan, at Cascades and along the Wawona Road. The gray squirrel population was wiped out by some strange malady, five years ago and the recent arrivals in the park, probably represent squirrels from lower elevations, who have worked up into Yosemite.

Yosemite, Dec. , -- The Tule elk herd in the paddock located on the floor of Yosemite Valley, now consists of twenty-one animals. The "sultan elk" or leader of the herd, exercises every care, in keeping the remaining eight bull elks, separated from the nine cows and three calves.

Yosemite, Dec. , -- Several California gray foxes were recently seen on the floor of Yosemite Valley. Ranger Gerald Mernin reported two of the foxes in the vicinity of Mirror Lake.

From-

James V. Lloyd.

Asst. to the Supt.

U.S. DEPT. OF THE INTERIOR
NATIONAL PARK SERVICE

Yosemite, Dec. , -- Santa Claus will again be an invited guest at the old fashioned English dinner party to be given at the Ahwahnee, under the direction of Ansel E. Adams, talented pianist of San Francisco. This will be the third successive time the Squire Bracebridge holiday party has been produced here, with the participants carefully following out the story, "Christmas", as first published by Washington Irving in 1819.

The members of Squire Bracebridge's party will be seated on a dias built at the west end of the spacious Ahwahnee dining hall. Early day English carols will be sung to entertain the Bracebridge family and their 400 invited guests at the dinner, as costumed servitors enter the great dining hall, bearing large trays of choice Christmas foods. At the conclusion of the dinner, the Bracebridge party adhering to early day customs, will lead their guests to the reception room where a series of Christmas entertainments will follow. Mrs. E. Des Baillets and Messrs. Don Tresidder and H. H. Hoss are members of the Bracebridge family.

Yosemite, Dec. , -- Superintendent C. G. Thomson has approved a joint survey of the park snowfields during the coming winter. The National Park Service rangers will cooperate with the State Water Division in securing snow data that is considered of major importance to all California interests. Rangers under Chief Ranger F. S. Townsley are now stocking the park outpost stations with supplies for winter use by snow measuring parties, skiing along the Merced and Tuolumne River watersheds.

From-

James V. Lloyd.

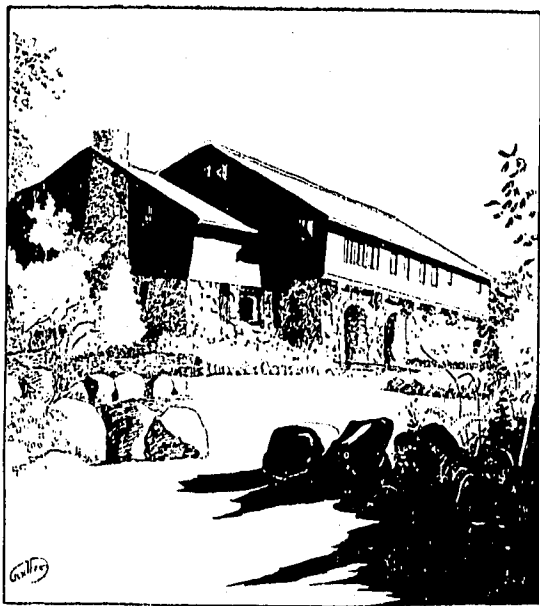
Asst. to the Supt.

U.S. DEPARTMENT OF THE INTERIOR
NATIONAL PARK SERVICE
YOSEMITE NATIONAL PARK

Yosemite, Dec. , -- J. F. MacKenzie, University of California; Arnold Eddy, University of Southern California; S. W. Cunningham, University of California at Los Angeles and E. Des Baillets, Winter Sports Director of the Yosemite Winter Club; have been named as a committee of four to govern the first Pacific Coast Intercollegiate Winter Sport Meet, to be held here on February 13 - 15th. inclusive; for the President Hoover Cup. Sketches have already been received from many jewelers throughout the country, offering their design for one of the most coveted trophies, to be awarded at intercollegiate meets next year.

Hockey, speed skating, ski races and other winter sport games will be on the program of the first Pacific Coast Intercollegiate Winter Sport Games. These events will be governed by the same rules as the Intercollegiate Winter Sports Union of the Eastern States. The University of California, University of Southern California and the University of California at Los Angeles, have already signed up for the coming meet, with negotiations now being carried on to have St. Mary's and Occidental Colleges likewise enter the competitions. Although all other colleges in the Pacific Coast Conference have been invited to participate, there is little chance of any colleges outside of California taking part in the meet this year. Oregon and Washington teams are without the services of an ice rink at this time, and Idaho and Montana will be unable to make the journey to California this year, according to word just received from these colleges.

YOSEMITE NATURE NOTES



The Yosemite Museum

Volume IX
JANUARY, 1930
Number 1

Department of the Interior
Ray Lyman Wilbur, Secretary
National Park Service
Horace M. Albright, Director