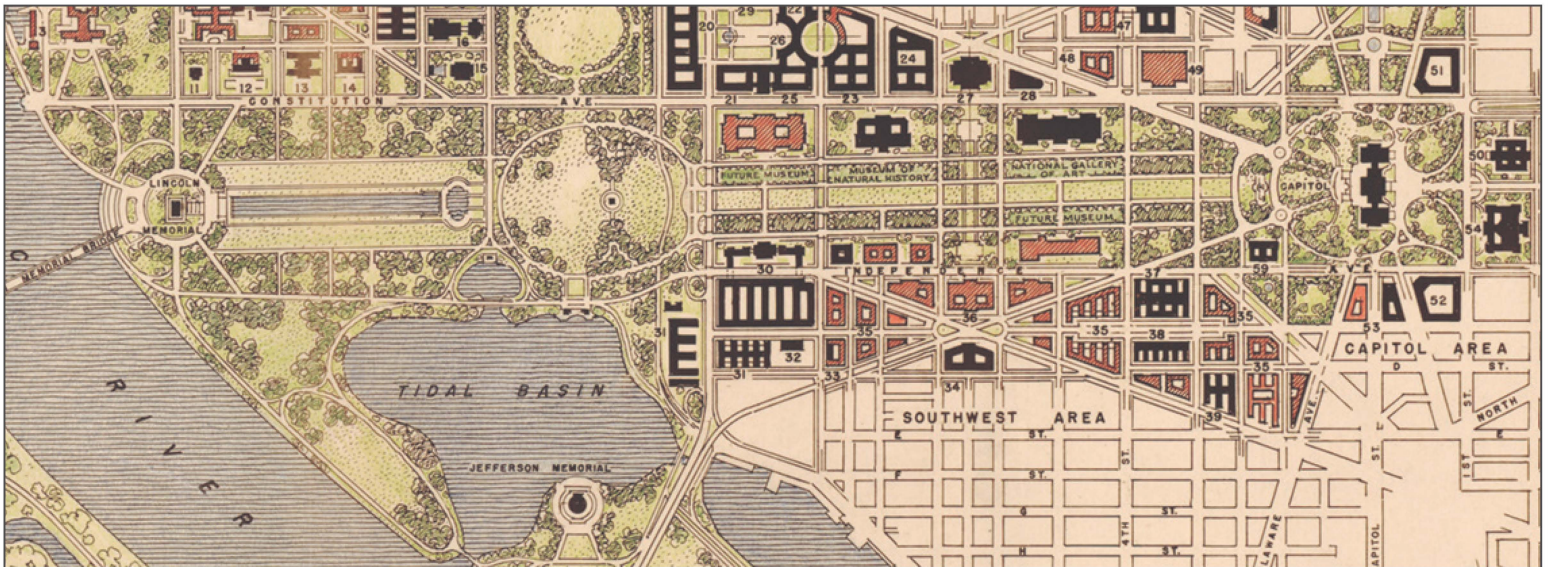


National Mall and Memorial Parks



Approved by:

A handwritten signature in black ink, appearing to read "John Die".

Superintendent, National Mall and Memorial Parks

Issued Date:

WASHINGTON MONUMENT GROUNDS AND SURROUNDING LANDSCAPES
NATIONAL MALL AND MEMORIAL PARKS
EVENT OPERATIONS GUIDE

1 PURPOSE OF THE EVENT OPERATIONS GUIDE FOR THE WASHINGTON MONUMENT AND SURROUNDING LANDSCAPES.....	3
1.1 Purpose and Need for Event Guidelines	3
1.2 Background: Washington Monument Grounds As A Highly Desired Special Event Location	4
1.3 Definition of the Washington Monument and Surrounding Landscapes	4
2 INTRODUCTION TO THE NPS REGULATORY PROCESS, AND PARK RESOURCE PROTECTION FOR THE WASHINGTON MONUMENT AND SURROUNDING LANDSCAPES.....	5
3 GENERAL OPERATIONS OVERVIEW: WASHINGTON MONUMENT AND SURROUNDING LANDSCAPES	7
3.1 Memorial Hours of Operation	7
3.2 Monument Interior Operation and Access	7
3.3 National Park Service Closures and Construction	8
3.4 National Park Service Interpretive Transportation Services Concessioners	8
3.5 Metro Accessibility	8
3.6 Parking	8
3.7 Pest Control.....	8
3.8 Food Service and Retail Kiosks	9
3.9 Restrooms	9
3.10 Smoking and Vaping	9
4 FEATURES AND AREAS OF THE WASHINGTON MONUMENT AND SURROUNDING LANDSCAPES	9
4.1 Washington Monument Plaza	9
4.2 Monument Lodge.....	10
4.3 Sylvan Theater.....	10
4.4 Survey Lodge	10
4.5 German American Friendship Garden.....	10
5 TURF AND LANDSCAPE.....	10
5.1 The Washington Monument Grounds.....	11
5.2 Turf area below the Circle of Flags.....	11
5.3 17 th Street Center Turf Area	11
5.4 Grassy Knoll between 14 th St NW and 15 th ST NW.....	11

6 ARTERIAL ROADS	12
6.1 <i>Constitution Avenue NW</i>	12
6.2 <i>Independence Avenue SW</i>	12
6.3 <i>15th Street NW</i>	12
6.4 <i>17th Street NW</i>	12
7 EVENT OPERATIONS OVERVIEW AND REQUIREMENTS	13
7.1 <i>Utilities</i>	13
7.3 <i>Lighting</i>	14
7.4 <i>Vibration Limitations</i>	14
7.6 FIREWORKS	15
Appendix A: Glossary of Terms	17
Appendix B: Map	19

1 PURPOSE OF THE EVENT OPERATIONS GUIDE FOR THE WASHINGTON MONUMENT AND SURROUNDING LANDSCAPES

This Event Operations Guide serves as a resource for planning and executing permitted activities at the Washington Monument, and surrounding landscapes. The Event Operations Guide provides information to protect public access and enjoyment of the site and its unique cultural and natural resources while outlining essential information on park regulations, logistical considerations, and available resources. These guidelines inform prospective permit applicants of the requirements needed to mitigate impacts to the Washington Monument and Surrounding Landscapes.

Event organizers are encouraged to review the guide thoroughly and to contact the National Mall and Memorial Parks Permits Office with any questions during the event planning process. Strong communication and coordination between NPS staff and permit applicants are essential for a successful activity, enabling the event to convey its intended messages while ensuring a safe experience for attendees.

1.1 Purpose and Need for Event Guidelines

National Mall and Memorial Parks (NAMA) is steward to the Washington Monument and surrounding landscapes and must minimize the impact of permitted activities on park resources and support public access and enjoyment of the park. The Event Operations Guide for the Washington Monument and surrounding landscapes balances the use of space for various activities, including special events and demonstrations, while supporting a positive visitor experience. The Event Operations Guide is intended to reduce undue impacts to the visitor experience including:

- Limiting or eliminating visitor access to the Washington Monument
- Damage to the turf, and historic trees
- Load in and load out of events impacting sidewalks, bike lanes and bus lanes

The guideline will clarify how the National Park Service intends manage activities at the Washington Monument and surrounding areas by:

- Identifying suitable locations for setup of stages, production compounds and other equipment
- Identifying acceptable weight loads for turf and hardscape areas
- Applying existing law and policy to best manage and protect the Washington Monument and surrounding areas
- Identifying required resource protection materials for hardscape and turf areas
- Managing safe load in and load out from 15th Street NW, 17th Street NW, Constitution Avenue and Independence Avenue

1.2 Background: Washington Monument Grounds As A Highly Desired Special Event Location

"First in War, First in Peace, and First in the hearts of his countrymen."

George Washington's military and political leadership were indispensable to the founding of the United States. As commander of the Continental Army, he rallied Americans from thirteen divergent states and outlasted Britain's superior military force. As the first president, Washington's superb leadership set the standard for each president that has succeeded him. The Washington Monument towers above the city that bears his name.

The Washington Monument, designed by Robert Mills and eventually completed by Thomas Casey and the U.S. Army Corps of Engineers, honors, and memorializes George Washington at the center of the nation's capital. The structure was completed in two phases of construction, one private (1848-1854) and one public (1876-1884). Built in the shape of an Egyptian obelisk, evoking the timelessness of ancient civilizations, the Washington Monument embodies the awe, respect, and gratitude the nation felt for its most essential Founding Father. When completed, the Washington Monument was the tallest building in the world at 555 feet, 5-1/8 inches.

The Washington Monument is one of the most visited places on the National Mall attracting nearly one million visitors annually. The grounds of the Washington Monument have borne witness to American history as Civil War soldiers encamped to protect the White House from 1861-1865, a rally point for the March on Washington for Jobs and Freedom in 1963, and the annual national celebration of the Fourth of July. The monument and its grounds are currently a desired location for different events ranging from First Amendment demonstrations, university graduation ceremonies, charity walks, and large-scale concerts.

As stewards of the Washington Monument and the surrounding grounds, the National Mall and Memorial Parks, the national park that manages the memorial, must minimize the impacts caused by permitted activities and ensure the public experience an atmosphere of reverence.

1.3 Definition of the Washington Monument and Surrounding Landscapes

The Washington Monument area is defined as Washington Monument Grounds:

- Southeast Quadrant
- Southwest Quadrant
- Northeast Quadrant
- Northwest Quadrant
- 17th Street Center Panel between westside and center sidewalks

Washington Monument within the Circle of Flags at the base of the Monument

- Washington Monument Grounds Grass Knoll between 14th to 15th bordered between

Jefferson Drive, NW and Madison Drive,

- Surrounding sidewalks
- Washington Monument Lodge Plaza
- German American Friendship Garden
- Raoul Wallenberg Rugby Fields
- Sylvan Theater and related turf

A permit applicant must request each location separately on a permit application. The Washington Monument and Grounds is 25 acres, and primarily consists of hardscape, turf and tree landscapes that is intersected by Constitution Ave NW, Independence Ave NW, 15th St NW, and 17th St NW.

2 INTRODUCTION TO THE NPS REGULATORY PROCESS, AND PARK RESOURCE PROTECTION FOR THE WASHINGTON MONUMENT AND SURROUNDING LANDSCAPES

The Washington Monument Grounds Events Operation Guideline provides guidance to be followed in conjunction with the conditions of permits, with the aim of safeguarding the historic site from overuse which may irreparably harm the monument surrounding hardscape and landscape areas. Adherence to the criteria set forth in the Events Operations Guide allows park visitors and resources to be protected and federal regulations to be met.

Pursuant to 36 Code of Federal Regulation 7.96(g) permitted use is granted on a first come/first serve basis, through an application process. Applications are accepted no more than one year in advance of the first day of setup of the proposed event and processed in order of receipt. Details regarding the permit process can be found in the Events Planning Guide for the National Capital Region (referred to in this document as the *National Mall and Memorial Parks Event Planning Guide (EPG)*).

The NPS reviews applications based upon regulatory criteria found at 36 CFR 7.96(g)(4)(vii)(A) - (D) and 36 C.F.R. 7.96(g)(5)(v)(A)-(E) and determines whether a permit may be issued. Among the criteria the NPS considers are:

- If the requested park area can accommodate the scale of the proposed activity.
- Availability of the requested park area, if not available an alternate site must be proposed.
- Evaluate the potential damage an activity may cause to park hardscapes, turf, furniture and landscapes.

In addition, 36 CFR 7.96(g)(5)(xii) provides that the NPS “may impose reasonable restrictions upon the use of temporary structures in the interest of protecting the park areas involved, traffic and public safety considerations, and other legitimate park value concerns.”

applications are accepted during the hours of 8:00 a.m. to 4:00 p.m., Monday through Friday, except for holidays.

In addition to specific regulations governing the National Capital Area, initial sections 36 CFR §1.6, (Permits) regulates “proper use, management, government, and protection of persons, property, natural and cultural resources within areas under the jurisdiction of the National Park Service.” Section 1.5 governs *Closures and Public Use Limits* and authorizes the Superintendent to issue permits, to authorize an otherwise prohibited or restricted activity, or to impose a public use limit.

Authorized activities include special events and demonstrations authorized through a permit process. The issued permit shall be consistent with applicable legislation, federal regulations and administrative policies. It will also be based upon a determination that public health and safety, environmental or scenic values, natural or cultural resources, scientific research, implementation of management responsibilities, proper allocation and use of facilities, or the avoidance of conflict among visitor use activities will not be adversely impacted.

Permittees must comply with NPS regulations and policies, the terms of the permit, and the following Event Operations Guide for the Washington Monument, and Surrounding Landscapes. Violating a term or condition of a permit issued is a violation of 36 CFR§1.6 and 36 CFR 7.96 (6), which may also result in the suspension or revocation of the permit by the Superintendent. In addition, if resource damage is a result of violation of permit conditions the permit holder may be responsible monetarily for any remediation of the resource.

Consistent with the NPS’s statutory mandate to protect parkland for the enjoyment of visitors while leaving it unimpaired for the enjoyment of future generations, the NPS regulations help protect park resources while managing assorted activities that may occur there. The terms “demonstrations” and “special events” are defined in the NPS regulations at 36 CFR 7.96(g)(1)(i)(ii). While demonstrations that involve 25 persons or fewer do not generally require a permit, all other demonstrations, as well as all special events, require that an application be submitted and a permit issued, per 36 CFR 7.96(g)(2)(3).

Special Events and Demonstrations are referred to as an activity or activities. All rules and regulations will pertain to both designations unless specifically stated.

In addition to the Events Operations Guide, permit applicants should reference the following regulations and policies, which govern activities at the National Mall and Memorial Parks to include the Washington Monument and Surrounding Landscapes:

- Code of Federal Regulation, specifically 36 CFR 7.96
- Significant Use Restrictions or Closures of Park Areas to Accommodate Special Events (NPS Policy Memorandum 16-02)
- National Mall and Memorial Parks Superintendent’s Compendium
- National Mall and Memorial Parks Event Planning Guide
- The National Mall and Memorial Parks Resource Guide for Turfgrass
- National Park Service, Management Policies, 2006
- The Secretary of the Interior’s Standard for the Treatment of Historic Properties
- National Capital Region (NCR) Outdoor Event and Tent Requirements, 2017
- National Park Service, Natural Resource Management Reference Manual #77; Procedural Manual 77-1, Procedural Manual 77-2
- NPS Director’s Order #53: Special Park Uses

3 GENERAL OPERATIONS OVERVIEW: WASHINGTON MONUMENT AND SURROUNDING LANDSCAPES

The National Mall and Memorial Parks, Division of Interpretation and Education Park Guides and Park Rangers staff the Washington Memorial Area to provide visitor services including scheduled interpretative talks and general information to the public. The United States Park Police staff the Washington Monument seven days a week, 24 hours a day.

3.1 Memorial Hours of Operation

The Washington Monument grounds are open 24 hours a day 7 days a week and on all holidays. Park Guides and Park Rangers are available at the Washington Monument from 9:00 a.m. to 5:00 p.m. The public often visits the exterior of the site before and after these times. Closing or obstructing the entrance to the Monument is strictly prohibited without prior, written approval from the NPS. There may be times when the Monument is closed to the public during event for security.

3.2 Monument Interior Operation and Access

Tickets are required to enter the Washington Monument. Reserve tickets online (reservation fee of \$1 per ticket applies) or get free, same-day tickets at the Washington Monument Lodge on 15th Street near the Washington Monument. Tickets are limited. The entrance is located on the east side of the monument inside the Circle of Flags. A clear path to the east entrance via the accessible routes must be maintained at all times.

3.2.1 Photography and Commercial Filming

A photography and commercial filming permit may be issued for the interior of the Washington Monument for the 500 ft observation level. Filming from the observation level may be is only

permitted outside normal operating hours of the Washington Monument. At no time is filming or photography allowed out the north window of the observation level of the Washington Monument.

3.3 National Park Service Closures and Construction

At different times, the Monument may be under construction. In these instances, special requirements, in addition to those cited in this document, may take effect. Differing conditions will be communicated to those applying for permits - or for those with approved permits through the issuance of a Record of Determination (ROD) and/or Public Notice.

3.4 National Park Service Interpretive Transportation Services Concessioners

The National Mall and Memorial Parks interpretive transportation services concessioners are important part of the park's daily operations. The buses provide a vital service to the public, bringing hundreds of visitors to and from the Washington Monument Area daily. Permitted activities cannot disrupt the respective transportation operations.

Transportation companies shall have full, unobstructed access to the Washington Monument Area throughout the entire activity. Depending on the size or magnitude of an event, the NPS may determine if disruption to the transportation concessioner operation is warranted.

3.5 Metro Accessibility

The closest Metro Station to the Washington Monument is the Smithsonian/National Mall Metro Station located at 12th Street SW and Jefferson Drive SW.

3.6 Parking

Metered public parking spaces are available to the north of the Washington Monument on Constitution Avenue NW and south of the monument on Independence Avenue SW. There are accessible parking spaces located on Homefront Drive, west of the monument.

3.7 Pest Control

To reduce pest attractants, the permit holder must ensure that food waste is quickly removed from the area and appropriately contained. NPS requests the utilization of rat proof trash cans for food waste only. Regular trash cans and dumpsters should be utilized for material/debris other than food. The area should be kept clean and free of food debris. Work or staff trailers should be secure so rodents cannot enter through HVAC/plumbing holes, under doors, cracks, panels, etc. Any fencing put up by the permit holder should be cleaned daily for any food debris/trash that can become trapped in the fencing. Permit holders are not allowed to utilize any pesticides without notification/approval from the NAMA Integrated Pest Management Coordinator. Pesticide use must follow NPS Resource Manual-77 and NPS Management Policies 2006.

3.8 Food Service and Retail Kiosks

Neither food nor drink (other than water) is permitted on any of the hard surfaces of the Washington Monument. Concessioner managed ice cream carts are available from March - September.

America's National Parks operates a bookstore in the Washington Monument Lodge on the east side of the Memorial on 15th St NW. The lodge operates Sunday-Saturday, from 8:00 am – 9:00 pm, May – October and from 8:00 am- 7:00 pm, October- May. The permitted activity cannot interfere with the operation of the retail kiosk. The retail kiosk shall be allowed to operate throughout a permitted activity. The permit holder is prohibited from blocking the kiosk. All permit infrastructure and equipment must setup at least 50 feet away from the retail kiosk.

3.9 Restrooms

The Washington Monument restrooms are located in the Washington Monument Lodge and behind the Sylvan Theater. Restrooms must remain open to the public during all stages of the proposed activity. The restrooms are not permitted as part of an activity. Applicants may provide portable restrooms to support the activity. However, if the magnitude of an activity is significant or for security reasons, the restrooms may be closed during the activity. This will be determined by the Permit Specialist and United States Park Police.

3.10 Smoking and Vaping

Smoking, as well as vaping, is not allowed on the interior of the Washington Monument Circle of Flags. This restriction applies to all members of the public, permit holder, production crew, contractors, and construction workers. A designated smoking area must be approved by the NPS and should be located within the production area, if applicable.

4 FEATURES AND AREAS OF THE WASHINGTON MONUMENT AND SURROUNDING LANDSCAPES

The Washington Monument and its associated landscape consists of several key components and features including the white marble obelisk itself, retaining and security walls, turf areas and trees, sidewalks and plazas paved in a variety of materials. Each feature is identified by a distinct name. These terms are clearly defined and photographically documented below. Permit holders should familiarize themselves with the site to better understand applicable restrictions and required protection in given locations.

4.1 Washington Monument Plaza

The area enclosed by the Circle of Flags is a restricted area. No permitted activities are allowed in this location.

4.2 Monument Lodge

The existing Monument Lodge is approximately 24' by 44' in footprint with a bay extension to the west. This historic facility was built in 1888 and was originally envisioned as a waiting room for Monument visitors. It was renovated in 2006 and currently houses concessions, ticket sales, staff restroom, men's restroom, and women's restroom. Use of the Washington Monument Grounds shall not disrupt nor interfere with operations of Monument Lodge.

4.3 Sylvan Theater

The Sylvan Theatre stage is located approximately 400 feet southeast of the Washington Monument. The open-air theater is set among groves of mature trees. The lawn seating area has the capacity to accommodate up to 4,000 people. The Theater was originally constructed in 1917. Use of the Sylvan Theater must be explicitly approved in the permit. Vehicular access to Sylvan Theater shall be along park sidewalks connecting to Independence Avenue SW.

4.4 Survey Lodge

The Survey Lodge, originally constructed to house the steam-generating plant for the Washington Monument elevator, is located approximately 750 feet southwest of the monument. The building acquired the name Survey Lodge after its use by survey crews of the National Park Service in the 1930s. In the 1970s, the Survey Lodge was converted to the headquarters for Mall Operations of National Park Service. Access to and operation of Survey Lodge shall not be disrupted by any permitted activity. The access road and parking at the Survey Lodge is reserved for park operational uses at all times.

4.5 German American Friendship Garden

The German American Friendship Garden was constructed in 1987-88 to commemorate the tercentennial of German American relations. The trees and gardens of the German American Friendship Garden shall be protected during all permitted activities. No structures may be erected nor installed on the hardscapes or turf of the Garden and no vehicles are allowed on the hardscapes. Vehicles cannot be driven through the German American Friendship Garden to access other parts of the Washington Monument Grounds.

5 TURF AND LANDSCAPE

The turf and landscape areas located in and around the Washington Monument Grounds are frequent public gathering places for various activities including sports, concerts, walks and other types of activities. The Monument and Surrounding Landscapes consist of many different types of turf and treed areas of various sizes and configurations. This includes the Northeast, Northwest, Southeast, and Southwest quadrants of the Washington Monument Grounds, the center turf area on 17th Street, and the turf area above the circular ha-ha wall. These terms are clearly defined and represented in the map below. Permit holder should familiarize themselves

with the site to better understand applicable restrictions and required protection in given locations.

To prevent adverse impacts associated with the event activities the located within Washington Monument area, the setup or staging of logistical equipment in this area must be consistent with the staging requirements found in the Turfgrass Operation Guide. Exceptions to this restriction may be made if consistent with the NPS regulations at 36 C.F.R. §§ 7.96(g)(4)(iii), (5)(iv) as determined by the NPS.

Lawn, trees, irrigation system, electric conduits, and water mains within the Monument Grounds shall be protected from adverse impacts associated with event activities. To prevent compaction of soil, some activities may require protective decking in accordance with the Turfgrass Operation Guide. The permit holder is liable for all damage done to the existing trees, and ground covers. Restricting activities to designated areas will protect the landscape and prevent additional cost to the permit holder.

Please see *The National Mall and Memorial Parks Event Use and Resource Guidelines for Turfgrass* for further guidelines, found at <https://www.nps.gov/nama/planyourvisit/permit-planning-resources.htm>

5.1 The Washington Monument Grounds

The grounds of the Washington Monument are made up of the five quadrants, Northeast, Northwest, Southeast, Southwest are rated Level 2 turf, however, the 17th Street Center Turf Panel is rated as Level 1 Turf as defined in *The National Mall and Memorial Parks Event Use and Resource Guidelines for Turfgrass*.

5.2 Turf area below the Circle of Flags

The turf area above the ha-ha wall and below the Circle of Flags is designated as Level 1 turf. For security purposes no structures are permitted above the wall. (*The National Mall and Memorial Parks Event Use and Resource Guidelines for Turfgrass*).

5.3 17th Street Center Turf Area

The turf panel is defined as the west side of the Circle of Flags bordered by the north and south sidewalks. It is designated as Level 1 turf protection. (*The National Mall and Memorial Parks Event Use and Resource Guidelines for Turfgrass*).

5.4 Grassy Knoll between 14th St NW and 15th ST NW

The knoll is bordered by 14th St NW on the east, 15th St NW on the west, Madison NW drive to the north and Jefferson Dr SW to the south. It is designated as Level 1 turf protection.

6 ARTERIAL ROADS

Site access for delivery and hauling of materials shall be from adjacent roadways as demonstrated by the permittee's site plan and approved by NPS. Access shall be along sidewalks and every effort must be made to avoid operating vehicles through tree groupings or near individual trees. Access to the Washington Monument grounds is limited to the handicap ramps at 17th Street and Constitution Avenue NW, 15th Street and Constitution Avenue NW, the two pedestrian crossings of 17th Street from the Washington Monument grounds to the World War II Memorial and the vehicular curb cut on 15th Street south of Constitution Avenue NW. No parking is allowed at the Washington Monument without prior, written approval from the NPS.

A plan of how the site will be approached and how traffic and the bike lane will be controlled is required for each proposed event. In this submittal, information documenting the path of vehicular traffic at the site (on 15th and 17th Streets NW as well as Constitution Ave NW and Independence Ave SW) during preparation for, during, and after a special event or demonstration, is required. Rules and regulations for District of Columbia streets also shall be observed. Signs directing vehicular and pedestrian traffic shall be furnished, with text and locations of signs indicated on the plan.

6.1 Constitution Avenue NW

Constitution Avenue NW is located north of the Washington Monument Grounds between 15th St NW and 17th St NW.

6.2 Independence Avenue SW

Independence Avenue SW is located to the south of the Washington Monument Grounds between 15th St NW and 17th St NW.

6.3 15th Street NW

15th Street NW is located to the east of the Washington Monument Grounds between Constitution Avenue NW and Independence Avenue SW; the street name changes from NW to SW when crossing between Madison and Jefferson Drives. There is a bike lane that runs along the west curb of the northbound lane.

6.4 17th Street NW

17th Street NW is located to the west of the Washington Monument Grounds between Constitution Avenue and Independence Avenue.

7 EVENT OPERATIONS OVERVIEW AND REQUIREMENTS

7.1 Utilities

The permit holder is responsible for avoiding any utility lines in the work area. If existing utilities are damaged in any way, the permit holder shall be held liable. Any staking beyond 18 inches requires a ground penetrating radar scan prior to the start of the activity. The report must be furnished to the NPS prior to the activity.

7.1.1 Environmental Safety

As per environmental laws in the District of Columbia, no hazardous material or water shall be disposed of in the storm sewer system.

7.1.2 Sanitary Sewers

No materials shall be disposed of in sanitary sewers including the emptying of temporary toilets.

7.1.3 Water

Water for non-potable use such as ballast tank filling is available west of the Sylvan Theater. Water from ballasts is not permitted to be dumped into storm water drains.

7.2 Power Supply

The permit applicant is responsible for providing their own temporary source of electrical power (generators), which should be quiet in nature and design. Electrical cables shall be laid on the ground and not suspended. They must be covered, well-marked, and not pose a tripping hazard or an obstruction to the disabled.

Protection from fuel leaks, oil leaks or loss of any fluid of any kind must also be provided. Any such leak must be confined and promptly cleaned up and disposed of in a legal and proper manner. If the spill containment system fails the permittee will be responsible for all mitigation measures to remove contaminated soil, ensure its proper disposal and rehabilitate the spill area to its condition prior to the event.

Power outlets are available at the Sylvan Theater Stage but are limited to 120 VAC/20 Amp rated equipment. Use of park provided power may be subject to cost recovery. The Facilities Management Division will provide current rates for power usage prior to the issuance of the permit. Power requirements in excess of what is available at the stage permittee may request to tie into Sylvan Theater power vault. All work required to provide the additional power will be performed by NPS personnel and all costs (including NPS personnel time) will be paid by the permittee.

7.3 Lighting

All lighting shall remain undisturbed. All existing lighting subject to potential damage by temporary structures or temporary lighting, shall be protected.

7.3.1 Temporary Lighting

All temporary lighting fixtures and lighting structures shall be of non-staining, non-rusting, materials. Tying or securing temporary lighting directly to any hard surfaces, metal fixtures, or vegetation, is strictly prohibited. Heat generated from temporary lighting shall not pose a risk to any works of art, the physical fabric of the memorial, hard surfaces, or vegetation.

Temporary lighting shall not be directed at the Washington Monument. Lighting effects that alter or detract from the permanent fixed lighting at the memorial is prohibited.

7.4 Vibration Limitations

Vibration produced by construction equipment and/or amplification (sound systems), within a certain distance from the Washington Monument, poses a danger to the Monument. The Monument can be damaged by large vibration amplitudes (how far a structure moves, measured in inches or meters), that can move the foundation and can cause cracking. To avoid damaging vibration, all construction equipment or sound systems must meet the following criteria:

7.4.1 Restrictions

Equipment and sound system vibration levels shall not exceed a designated frequency. Frequency is how many times a building moves back and forth each second, in cycles per second. Frequency is measured in Hertz (Hz), where one cycle per second equals one Hertz. Equipment and level of sound systems shall not exceed thirty (30) Hertz (Hz.) per second, as measured by the NPS at the base of the memorial.

7.4.2 Submittals Requirements

The permit applicant shall submit to NPS, written proof that all construction equipment and sound levels fall within the above parameters. In addition to the documentation on frequency (in Hertz), the submittal shall include the weight of the equipment, and if applicable, the type of engine (gasoline, diesel, or electric), and the rotations per minute (RPM) of the engine. In the event there is a question about a certain piece of equipment and the vibration it produces, the permit holder will be required to perform testing at their own expense until the NPS is satisfied that the requirements of this document are being met.

7.5 Trash Removal

The permit holder is responsible for all site clean-up during event set up, and after a special event:

7.5.1 Trash/Debris Pick-Up

All trash, recyclable materials and debris shall be cleared from the grounds and hard surfaces of the memorial immediately before, during and after the conclusion of the special event.

Separate receptacles for trash and recyclables shall be provided and removed from the site accordingly by the permit holder. Receptacles must be placed on hard, paved surfaces and must not overflow with trash or debris. Use of clear trash bags is required for all trash receptacles used for the event.

All park roads shall be cleaned using a street sweeper. Washing debris and other material into storm sewer catch basins is not acceptable. Because cultural resources are in this area, the permittee shall contact NPS immediately about substances affecting the Washington Monument hardscape; and shall only proceed with specialty cleanup and or repairs with NPS permission, using required methodologies and approved contractors. All site and specialty cleanup and or repairs shall be paid for by the permittee.

7.5.2 Inspection

The NPS will **inspect** the site after a special event (after all equipment has been removed) to assess the condition of the site. The permit holder is responsible for any additional site cleanup, as determined by and at no additional cost to the NPS.

7.5.3 Submittal Requirements

The permit applicant shall demonstrate, before a permit is issued, that arrangements for trash and recyclables pickup after a special event have been made. The amount of time anticipated for clean-up also shall be provided.

7.6 FIREWORKS

The Washington Monument attracts thousands of visitors a year to learn about George Washington or ascend to the 500ft level to experience views of the Nation's Capital. The grounds are heavily used for permitted activities and serve large crowds as the major cross axis of the National Mall. The National Park Service strikes a delicate balance to maintain public access and allow for various types of permitted activities. Permitting fireworks displays is incredibly challenging because of the limitations that need to be placed on public use for the lengthy preparation, launching, and clean up associated with the program as well as the potential risk to large numbers of people while the pyrotechnics are on site.

The launching of fireworks is allowed from the Washington Monument Grounds only in rare instances because of the significant disruption to visitors and the potential for damage to the Washington Monument and Sylvan Theatre. Fireworks may not be launched or located within the circle of flags, above the ha-ha wall or the concentric sidewalks. Staging cannot interfere

with operations of the Washington Monument, nor can it restrict public access to the grounds or the Monument for a significant period of time.

The recommended park area for fireworks is the Lincoln Memorial Reflecting Pool and West Potomac Park Recreational Fields. Permission to use a barge in the Potomac River must be acquired from the United States Coast Guard and applicable District of Columbia government agency. Additional approval by District of Columbia Fire is required.

7.6.1 Display Request Requirements

All request for firework or pyrotechnic displays must be made in writing and approved by the Superintendent. Firework display request should include at a minimum:

- Connection of firework display to activity.
- Detail plan showing all firework launch sites and fall out zones.
- Fireworks inventory list.
- Resource protection plan including cleanup of shell fragments.
- Safety Plan including weather contingency.
- Proof of Licenses, insurance and bonding of Firework Company.
- Certifications of all pyrotechnic technicians and assistants.

All firework (pyrotechnics) shall meet NFPA 1123, NFPA 1124, NFPA 1126, and be inspected and approved by the National Capital Region (NCR) Authority with Jurisdiction (AHJ). These standards can be found in the *National Capital Region (NCR) Outdoor Event and Tent Requirements*.

All pyrotechnic technicians and assistants shall meet the state or locality certification requirements, as approved by the NCA-AHJ.

Maximum Shell Size:

- 6" Shells

To protect the exposed aggregate walkways from the steel rack system the permittee must lay down a minimum of:

- $\frac{3}{4}$ " piece of plywood on top of the pallet
- $\frac{1}{2}$ " piece of plywood on top with an additional cross section of 2x6 lumber over it

The permittee shall be responsible for any cleaning required of the parkland including roadways resulting from falling ash and embers that stain the stylobate or other masonry of the Monument, Sylvan Theater or other park infrastructure.

APPENDIX A: GLOSSARY OF TERMS

All-Terrain Vehicles: All-terrain vehicles are small, multi-purpose vehicles with large, low-pressure tires, which can travel across many different types of ground surfaces. Vehicles of this kind produce low levels of vibration.

Allowable Live Load: Allowable live load is the movable weight that the structure of a certain area can safely accommodate. This would include the weight of equipment, vehicles, temporary structures, people, etc. Placing weight greater than the allowable load limit can compromise the structural integrity of the site, putting both the structure and public in danger. A load produced by the use and occupancy of the building or other structure that includes construction or environmental loads, such as wind load, snow load, rain load, earthquake and flood load.

Amplitude: When there is a significant source of external vibration, amplitude is how far a structure moves, measured in inches or meters.

Bollards: Bollards are vertical posts used to define space, direct or control access.

Diameter at Breast Height (DBH): This is a standard landscape term meaning the diameter of the trunk of a tree at the height of a person's chest.

Drip Zone: The area between the trunk of a tree and the vertical projection of the limits of tree's branches to the ground.

Frequency: When there is a significant source of external vibration, frequency is how many times a building moves back and forth each second, in cycles per second. It is measured in Hertz (Hz), where one cycle per second equals one Hz.

Ground Protection: Rigid interlocking NPS approved material specifically designed to transfer pedestrian and vehicular loads to turf without causing rutting, compaction, or other damage to the turf.

Hard Surfaces: Hard surfaces include those made out of stone (marble, granite, cobblestone, asphalt (surface of roadway), and concrete and concrete pavers (both smooth and with exposed aggregate). This includes hard surfaces of the Washington Monument, plazas, walls, benches, coping (top of walls), ramps, sidewalks, and roadways.

Hertz: A hertz is a unit of frequency of a periodic process equal to one cycle per second. We use this measurement to determine the amount of vibration a piece of equipment, vehicle, or sound system produces.

Irrigation System: This is an underground system of piping through which water is disbursed. It is used for the watering of surrounding trees, shrubs, and grass. Above ground sprinkler heads distribute this water to the vegetation.

Metal Staging Elements: Metal staging elements include any type of metal platform constructed for a special event. This includes stages, bleachers, podiums, sound towers, light towers, camera stands, structures for video screens, booths, concession stands, etc.

Mitigation: To mitigate is to lessen or improve a situation or condition. If damage is caused to the memorial or landscape, the permit holder is required to mitigate the condition by repairing, removing, or replacing the affected area at no cost to the government. The NPS shall regulate this process.

National Mall and Memorial Parks (NAMA): National Mall and Memorial Parks is a unit of the National Park Service, which manages 1,048.5 acres of land in downtown Washington, D.C. This area includes the National Mall with its major national monuments and cultural landscapes (Mall, Lincoln Memorial, Jefferson Memorial, Washington Monument, Korean War Memorial, Vietnam Veteran's Memorial, World War II Memorial, etc.).

National Park Service (NPS): The National Park Service is a federal bureau under the United States Department of Interior. It is responsible for 431 national parks, monuments, and historic sites in all 50 states, the District of Columbia, American Samoa, Guam, Puerto Rico, Saipan, and the American Virgin Islands.

Polystyrene: Polystyrene is a polymer of styrene or a rigid, Styrofoam-like material to be used at the memorial to protect hard surfaces (see the definition for Hard Surfaces).

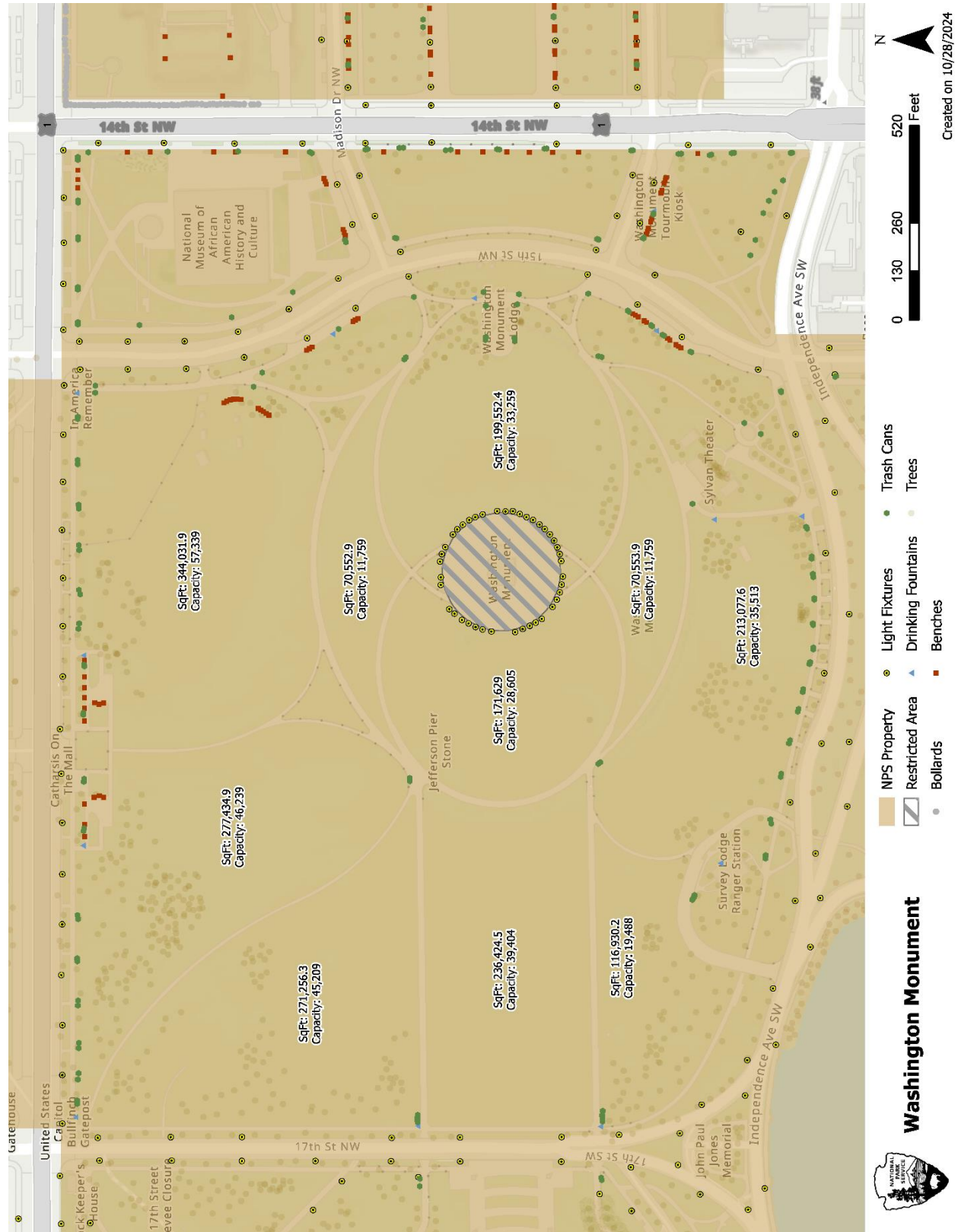
Submittal Requirements: These are the items which the permit applicant is required to submit to the National Park Service, for use of the memorial and the memorial grounds for a special event or demonstration. These items correspond to the guidelines in this document. If all of the submittal requirements are satisfactory to the NPS, a permit will be granted for use of the Washington Monument.

Temporary Protection: Temporary protection is the material used to cover or safeguard the hard surfaces (see definition of Hard Surfaces) and landscape of the Washington Monument.

Temporary Structures: Temporary structures include any structure constructed at the memorial solely for the purpose of a special event or demonstration. This includes stages, bleachers, podiums, sound towers, light towers, camera stands, structures for video screens, booths, concession stands, trailers, signs, portable toilets, etc., built of any material.

United States Park Police: United States Park Police (USPP) is the law enforcement branch of the National Park Service. Their area of responsibility includes the Washington Monument.

APPENDIX B: MAP



INTERNAL DOCUMENT CONTROLS – VERSION AND REVIEW TRACKERS

Version Control

The following table documents major revisions to this document.

Version	Review Date	Primary Point of Contact	Description of Changes
3.0	11/29/2024	Marisa Richardson	Update to guidance document

Document Review Tracker

The following table documents all reviewers for all versions. The current version is listed last.

Name	Bureau/Office	REVIEW TYPE	Version Reviewed	Review Date
		<ul style="list-style-type: none"> • Author • Reviewed with Comments • Review without Comments • Info Only 		
Yue Li	NAMA Chief of Professional Services	Reviewed with no comments	3.0	11/21/2024
Lori Swafford	NAMA Administrative Officer	Reviewed with comments	3.0	11/22/2024
Karl Gallo	NAMA Concessions Management Specialist	Reviewed with tracked changes and comments	3.0	11/22/2024
Chad Tinney	Supt’s office	Reviewed with no comments	3.0	11/27/24
Sophie Kelly	NAMA/Super Office	Reviewed with comments	3.0	11/22/2024
Mike Litterst	NAMA/Comms	Reviewed with comments	3.0	11/22/2024
Aly Baltrus	NAMA/I&E	Reviewed with comments	3.0	11/22/2024