



United States Department of the Interior

NATIONAL PARK SERVICE
Mount Rushmore National Memorial
Building 31, Suite 1
13000 Highway 244
Keystone, South Dakota 57751



10.D(MORU)

NOTICE TO THE PUBLIC July 2, 2025

Beginning on Thursday July 3, 2025, from 5:00 a.m. through 9:00 p.m. local time, the following National Park Service (NPS) areas will be closed or have public use limits imposed. Maps illustrating the closed or restricted park areas are attached.

The closure and public use limit are to provide for operational activities related to a dignitary visit. During the closure and public use limit, visitors may be held in place or asked to pass through a temporary screening location including through a magnetometer.

Pursuant to 36 C.F.R. § 1.5, the NPS is imposing a temporary closure of, and public use limit in, certain designated parklands at Mount Rushmore National Memorial. These closures and public use limits come at the request of the United States Secure Service (USSS) based on a security determination. Less restrictive measures will not suffice to provide for public safety.

Specifically, there will be closures and temporary use restrictions in place from 5:00 a.m. until 9:00 p.m. local time on July 3, 2025, in the following locations: Administrative Building Parking Lot, Grand View Terrace, the Avenue of Flags, the Park's Amphitheater, the Sculptor's Studio, three rows of parking spots on the top level of the northwest portion of the Washington and Lincoln Parking Facility structures, the "Nature Trail" that connects the parking structures to the Borglum View Terrace, the trail from Highway 244 to the Presidential Trail; the Presidential Trail to the Lakota, Nakota, and Dakota Heritage Village, and the wilderness areas adjacent to these trails and other areas depicted in red on the map. It is anticipated that these areas will remain temporarily closed or restricted until 9:00 p.m. local time July 3, 2025.

If the restrictions are not needed, they will be lifted as soon as practicable.

Visitors entering these areas will also be subject to a public use limitation and are prohibited from bringing the following items past the designated screening location:

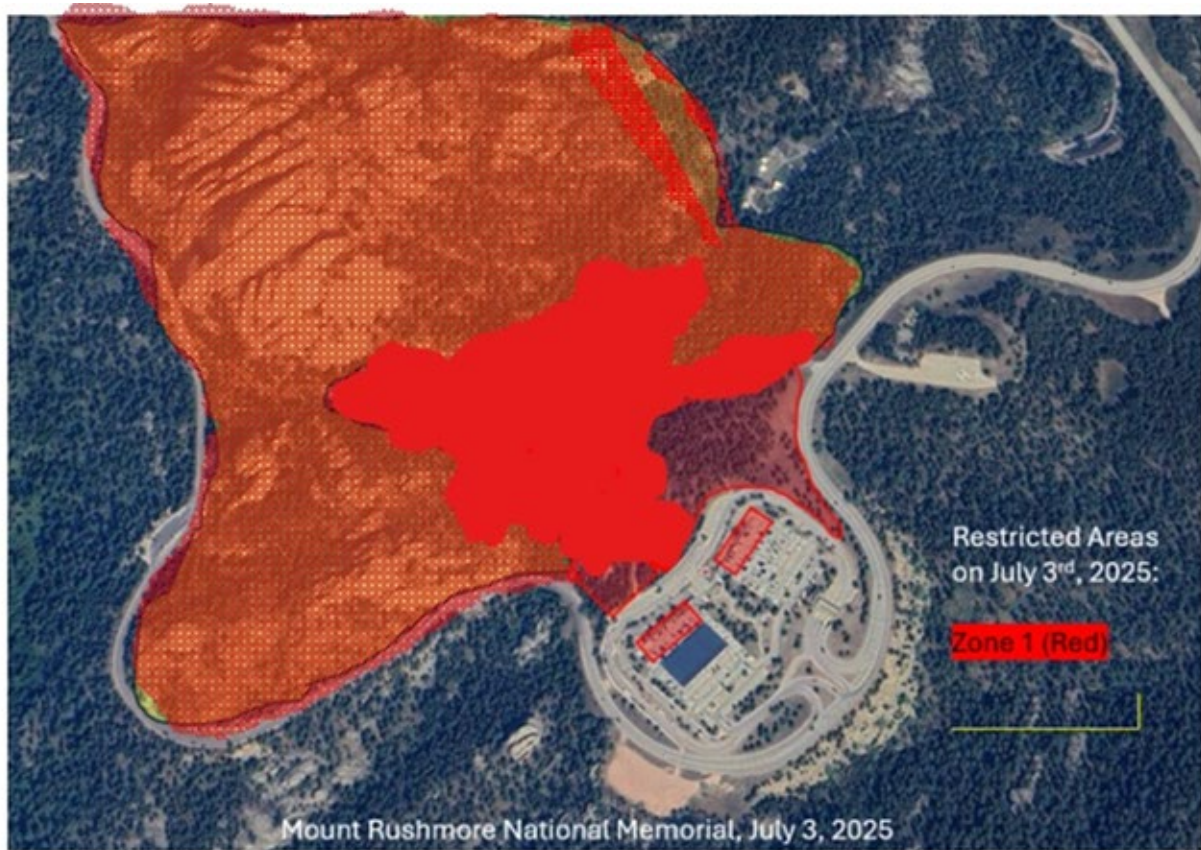
- Aerosols
- Ammunition
- Animals other than service/guide animals
- Backpacks, bags, and soft-sided coolers exceeding size restrictions (18" x 13" x 7")
- Bicycles
- Balloons
- Hard-sided coolers of any size
- Drones and other unmanned aircraft systems

- Explosives
- Firearms
- Flammable liquids
- Folding Chairs or Camp Chairs
- Glass, thermal or metal containers
- Knives
- Laser pointers
- Mace/Pepper spray
- Multitools (Leatherman, Gerber, etc.)
- Packages
- Range Finder
- Razors
- Recreational motorized mobility devices
- Selfie Sticks
- Signs exceeding size restrictions (20' x 3' x 1/4")
- Structures
- Supports for signs and placards
- Toy guns
- Tripods and monopods
- Umbrellas (umbrellas without metal tips will be permitted)
- Weapons of any kind
- Any other items determined to be potential safety hazards

The park's designated demonstration areas in accordance with 36 C.F.R. § 2.51 and §2.52 in the walkway and amphitheater may be temporarily unavailable, but other designated areas will remain accessible. For most of this closure, members of the public seeking to utilize designated First Amendment areas affected by this closure and public use limit may do so subject to security screening.

The National Park Service appreciates the Public's cooperation in this matter.

Peter S. Swisher
Acting Superintendent



Red shaded areas are subject to the temporary closure or public use restriction in this public notice.