

Mount Rainier

National Park Service
U.S. Department of the Interior

Mount Rainier National Park
Ashford, WA

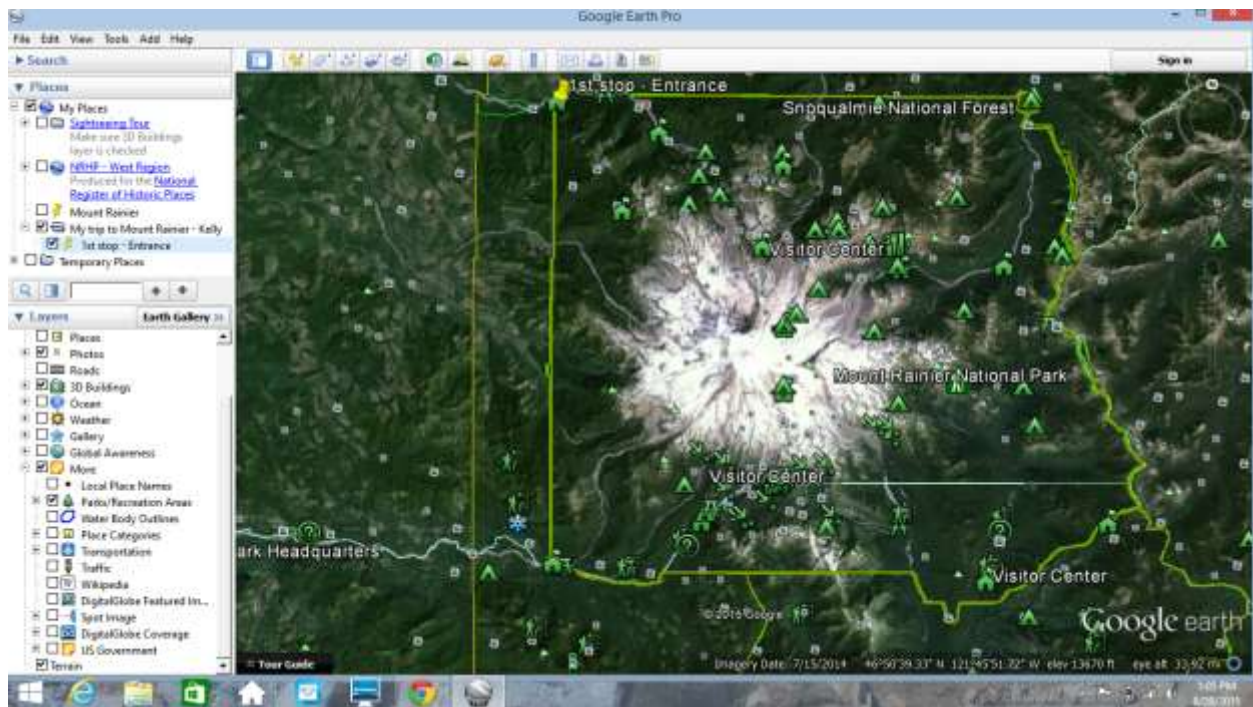


Objectives: Student will identify major areas around Mount Rainier and understand where Mount Rainier is. Students will create their own trip while exploring maps and digital images. Student will be able to interpret maps and local events to Mount Rainier.

Materials: Crayons, colored pencils, enough worksheets for each student, access to Google Earth.

Procedure:

1. Install Google Earth if not already downloaded. Try to download Google Earth Pro. As of January 20, 2015, Earth Pro licenses are now free (Go here for more information <https://support.google.com/earth/answer/176160?hl=en>). Students should have some familiarity with Google Earth first. If not, there's a good resources of tutorials found here (<https://support.google.com/earth/answer/176576?hl=en>)
2. Launch Google Earth and make sure only certain layers are selected: Borders and Labels, Places, Photos, More -> Parks and Recreation -> US National Parks, Layers -> Geographic Features -> Volcanos. It should look like this after.



3. Have the students explore around the park, look at the extend and location of the park boundary, surrounding Forest Service and do a quick survey of the state of Washington. After that, prompt the students with these questions.
 - a. Click on Mount Rainier and write one observation.
 - b. Find the closest volcano to Mount Rainier. Write its name. Has this mountain erupted in the past 100 years? What's the name of the range these volcanoes are from.
 - c. Explore West of that volcano and find the smoke column picture on the shore.
 - d. Name 3 big cities within 100 miles of Mount Rainier

EXPERIENCE YOUR AMERICA™

The National Park Service cares for special places saved by the American people so that all may experience our heritage.

- e. Zoom into the park. Find and take a flying tour of Mount Rainier. What landforms do you see?
 - i. Find a place you would build a house – write its coordinates
 - ii. Click on some pictures, find an activity you would do here
- f. How far is Mount Rainier from you?
 - i. Use the ruler function – Click on rainier, then the ruler, measure to your city using feet and miles

Extensions

- Use tilt and zoom feature to fly downstream, where do some of Mount Rainiers Glaciers empty out to?
- Plan your visit – Create a tour
 - **First make a folder in “My Places”, first add place mark for what entrance you’d start**
 - Then add place marks for each stop along the way and have the students print



EXPERIENCE YOUR AMERICA™

The National Park Service cares for special places saved by the American people so that all may experience our heritage.