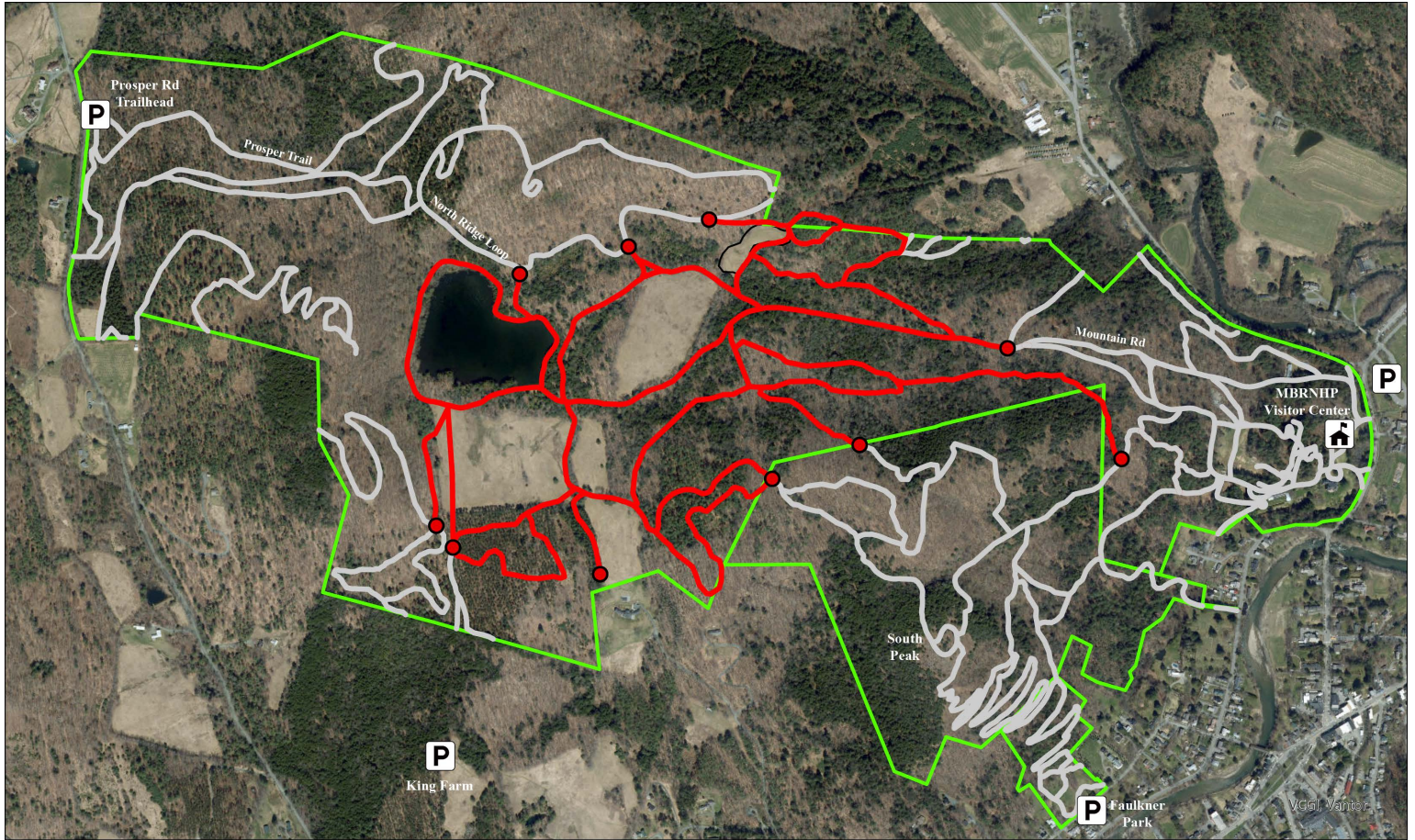


Temporary Trail Closure Map

Marsh-Billings-Rockefeller National Historical Park

Trail Closure Dates: June 30 - July 1, 2026

National Park Service
U.S. Department of the Interior



Carriage Roads and Trails

— Open

— Closed

▭ National Park Boundary

● Barriers - DO NOT CROSS

▭ Parking

0 0.38 0.75 1.5 Miles

Trail Closure Details

A significant portion of trails and carriage roads within the Marsh-Billings-Rockefeller National Historical Park boundary will be closed for habitation restoration beginning the afternoon of Tuesday, June 30.

These closures may continue through Wednesday, July 1, 2026. Please observe and obey all posted signs.