

One City, Many Cultures exhibition at the Mogan Cultural Center

Lowell National Historical Park
February 9, 2020

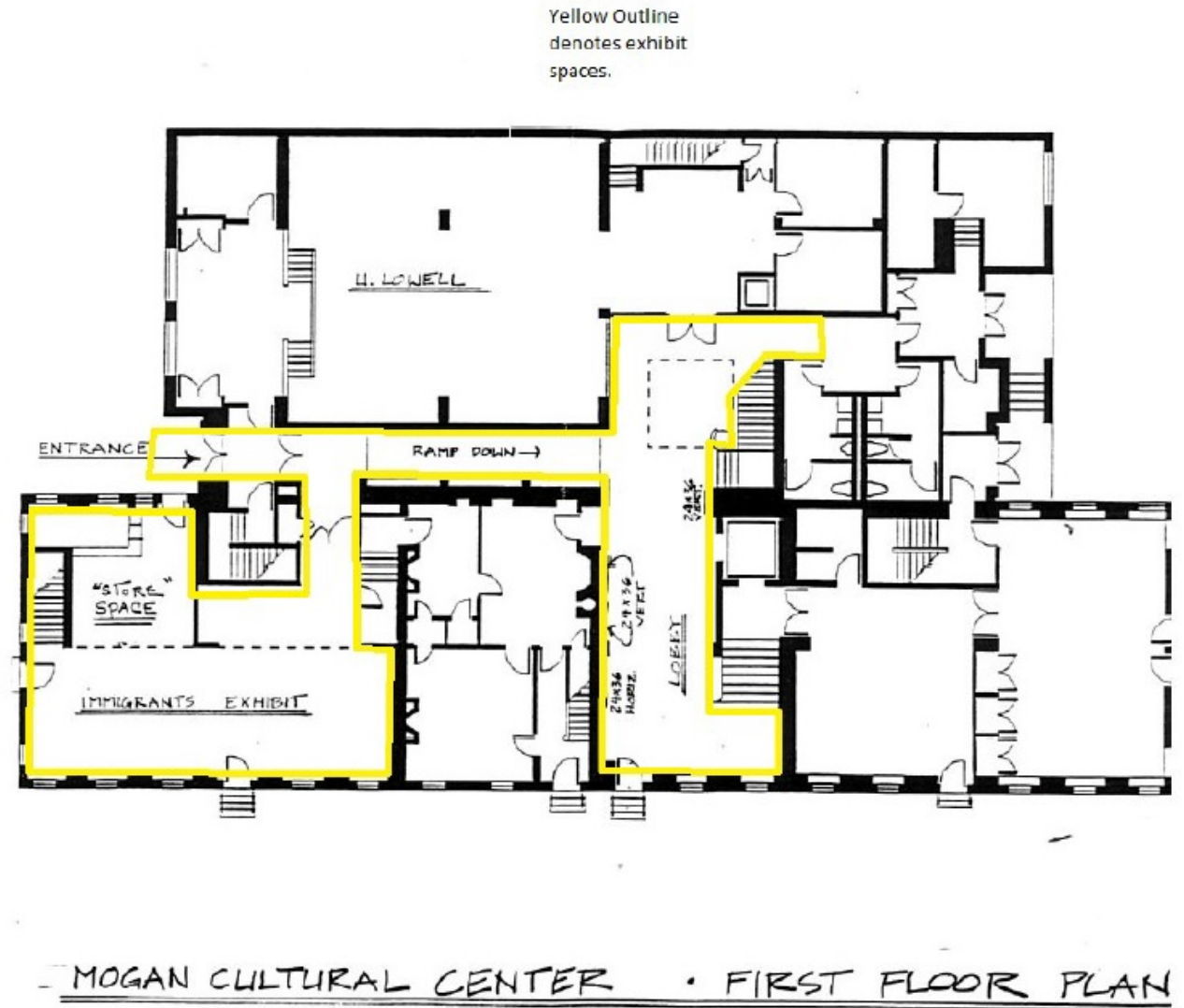


Space Available

~1700 Square feet Gallery Space

Additional design and refreshing of
common spaces

FRENCH STREET





Community-driven for its time

The Future Exhibit Will...

- Replace the existing and dated exhibition about immigrants, installed in 1988.
- Solicit community input in shaping the themes and direction of the exhibit.
- Tell the stories of diverse cultures and cultural changes that have found their place(s) in Lowell and give it its distinctive urban composition.
- Provide a safe and accessible visitor experience that is audience-centered and relevant to 21st-century visitors, including currently underserved audiences.
- Enable visitors to see themselves in and better understand others through the exhibit experience.
- Evaluate exhibit development and design at every stage.

“Lowell is a microcosm of the historical and contemporary shifting of cultural identities and tensions brought about by broader social changes such as industrialization, urbanization, and globalization.”



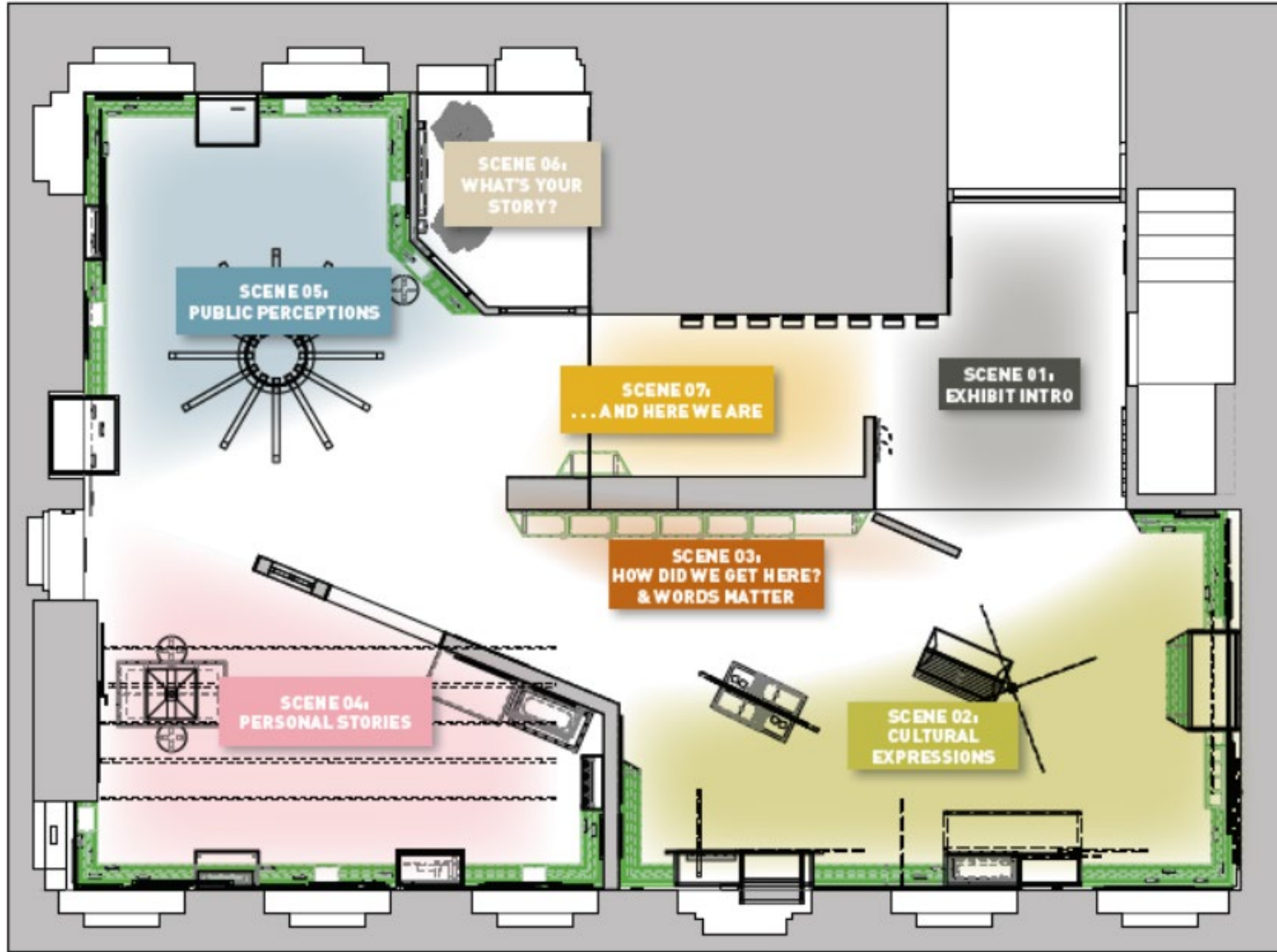
Key Audiences

Local Intergenerational Groups, Students and Teachers, and Heritage Tourists

Community Roundtable

A Community-Driven Process





Cultural Diversity is the Basis for a Vibrant Lowell and America

- Mobility and Transition
- Cultural Diversities and Commonalities
- Building Community

Project Schedule

Date and Phase	Tasks
Summer 2018: Funding Obtained	PMIS Project from 2015 awarded through rec fee funding
Fall 2018 – Fall 2019: Pre-Design	Project leads selected Community Roundtable Process Determined and Started Themes and Direction of Exhibit SOW for Planning and Design Contract
Fall 2019 – Spring 2021: Planning and Design	Planning and Design of Exhibit Ongoing programming WITH Community Reviewing Deliverables and Refining through
Summer 2021 – Fall 2022/23: Fabrication	Building Exhibit Building Project for accessibility Original Content Creation Continued programming WITH Community
Fall 2022/23	Exhibit opens!

Community engagement



Multiple Perspectives

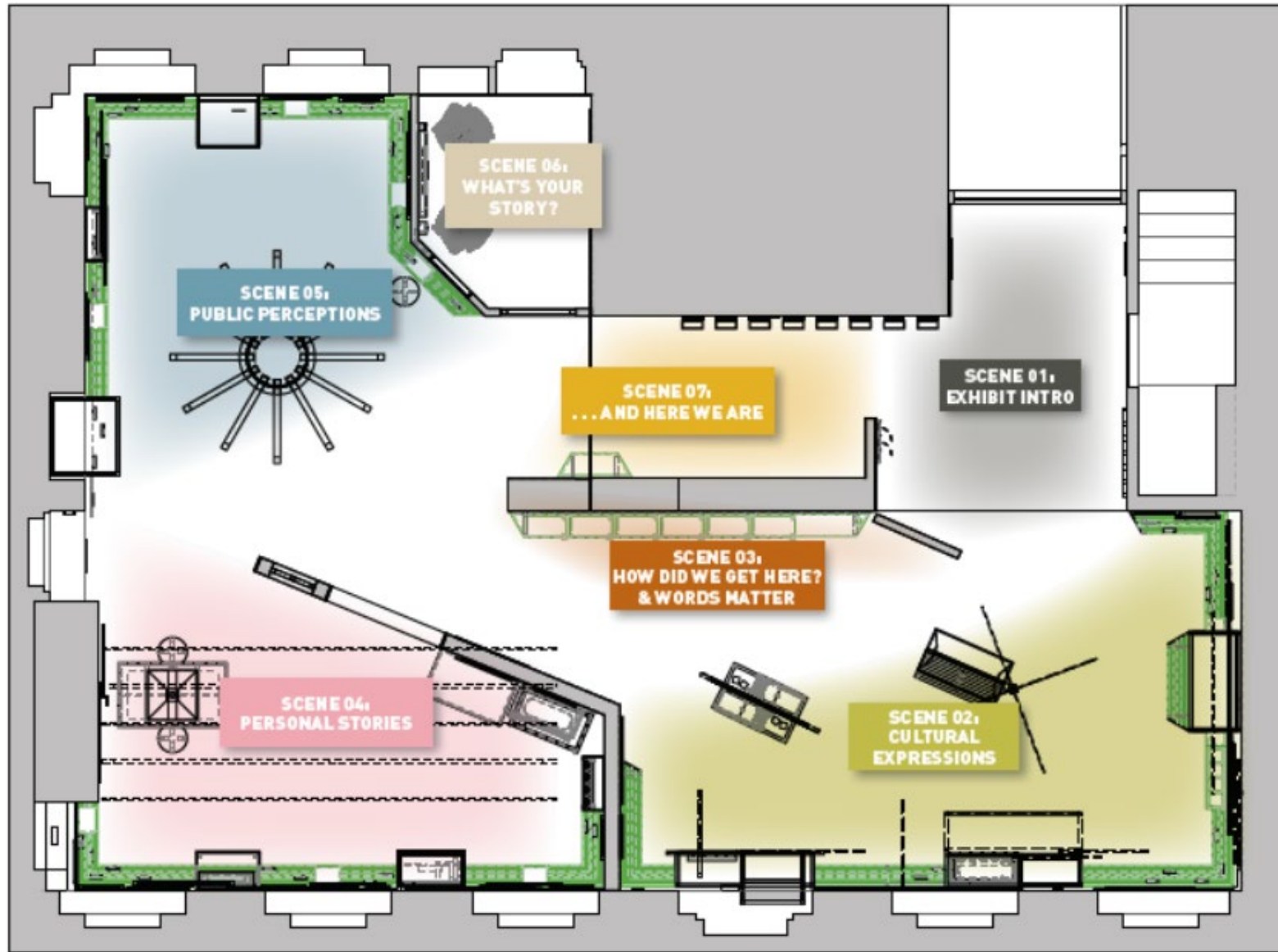


Personal Relevancy



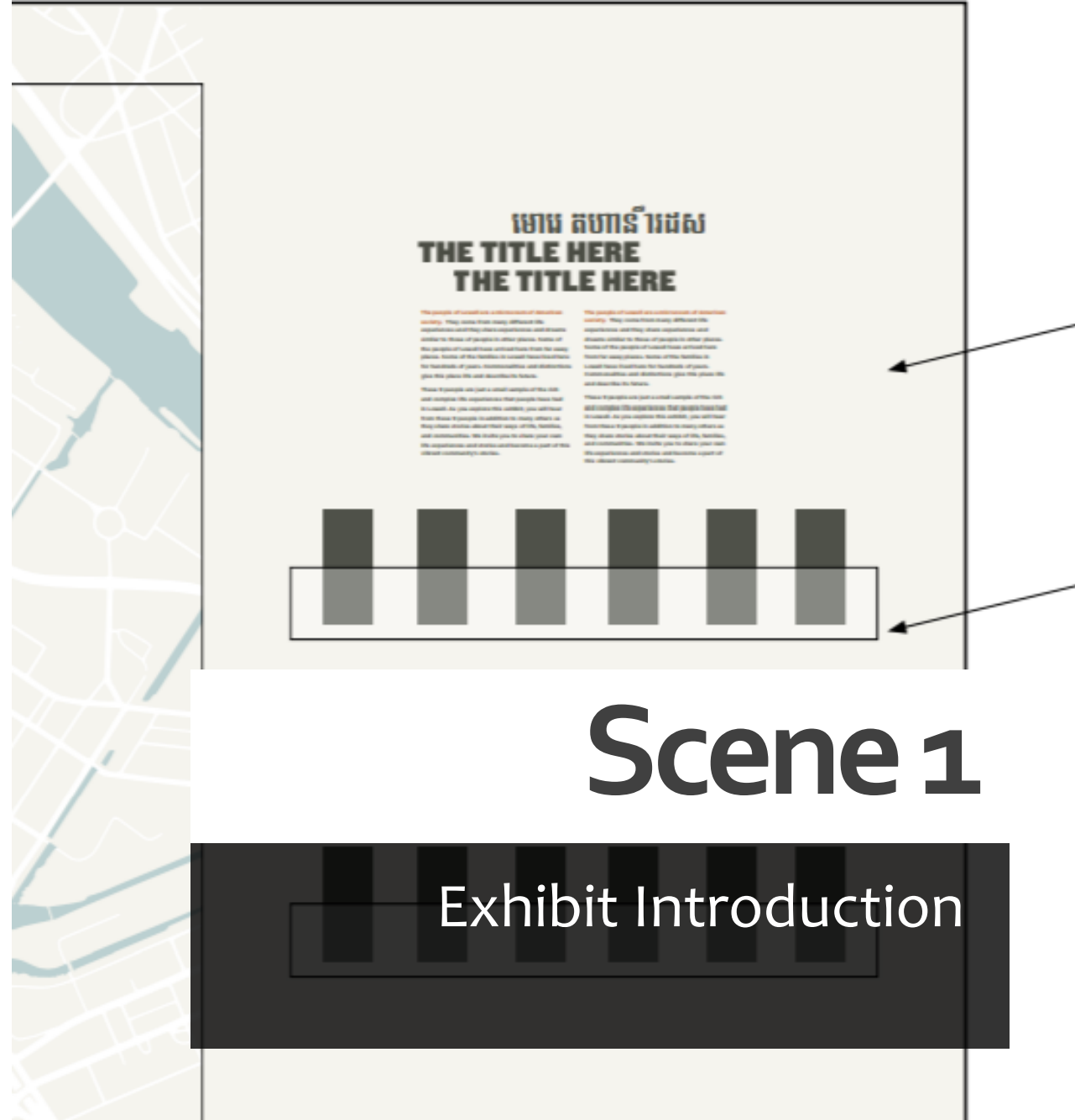
Our Planning and Design Contractors Fall 2019 Through
Spring 2021

Working with The Design Minds



What stories
should not
be missed?
Who can best tell
those stories?

(AMBIENT AUDIO WITH
OVERHEAD SPEAKERS)

WALLPAPER
GRAPHIC



Scene 2: Cultural Expressions

How do we express culture?

Adding Stories

DAR VUELTA PARA ESPAÑOL

“This beautifully crafted statue will serve as a reminder that, not only does the city still care about our people, but that it cares about history, the voice of our people, and the continuing education of the public **of the people that inhabited this land for centuries before it was the City of Lowell.**”

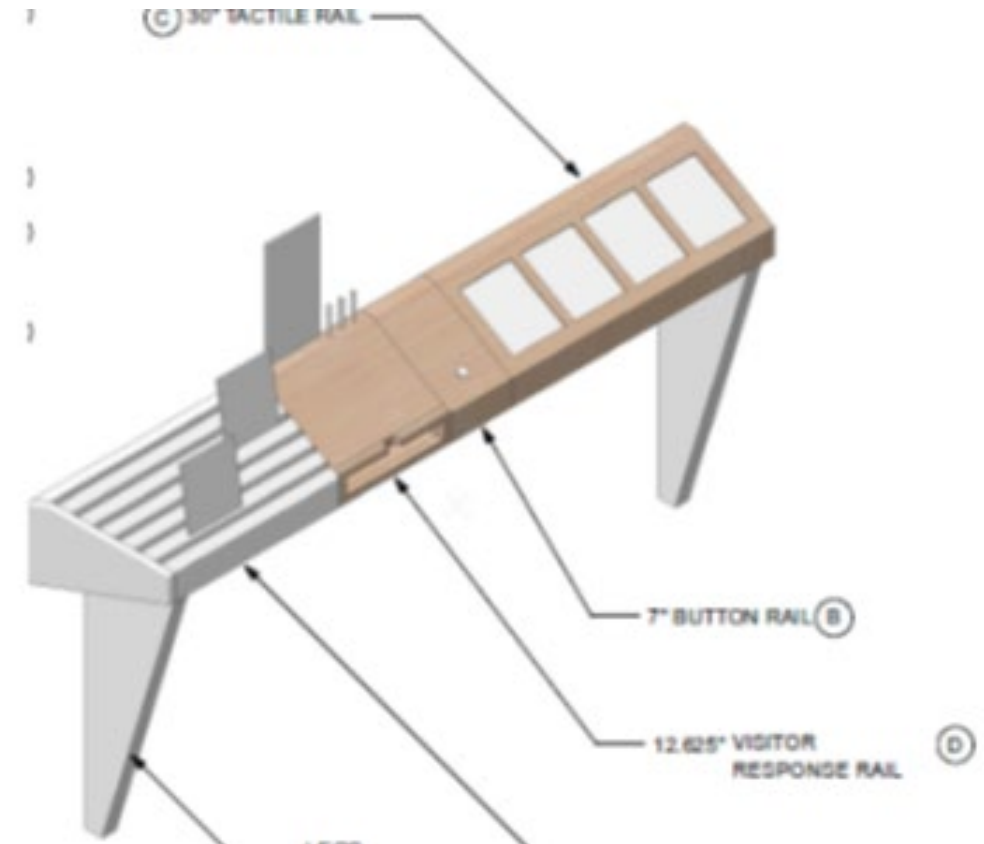
THOMAS EAGLE RISING LIBBY, 2018
Micmac Chief
Greater Lowell Indian Cultural Association

MY STORY Look around your community. Where do you see yourself reflected in the physical landscape? Public art and memorials can visually connect a group to a place. For the Greater Lowell Indian Cultural Association, the installation of this statue near the Pawtucket Falls would serve as a vital reminder of the area's Indigenous history.

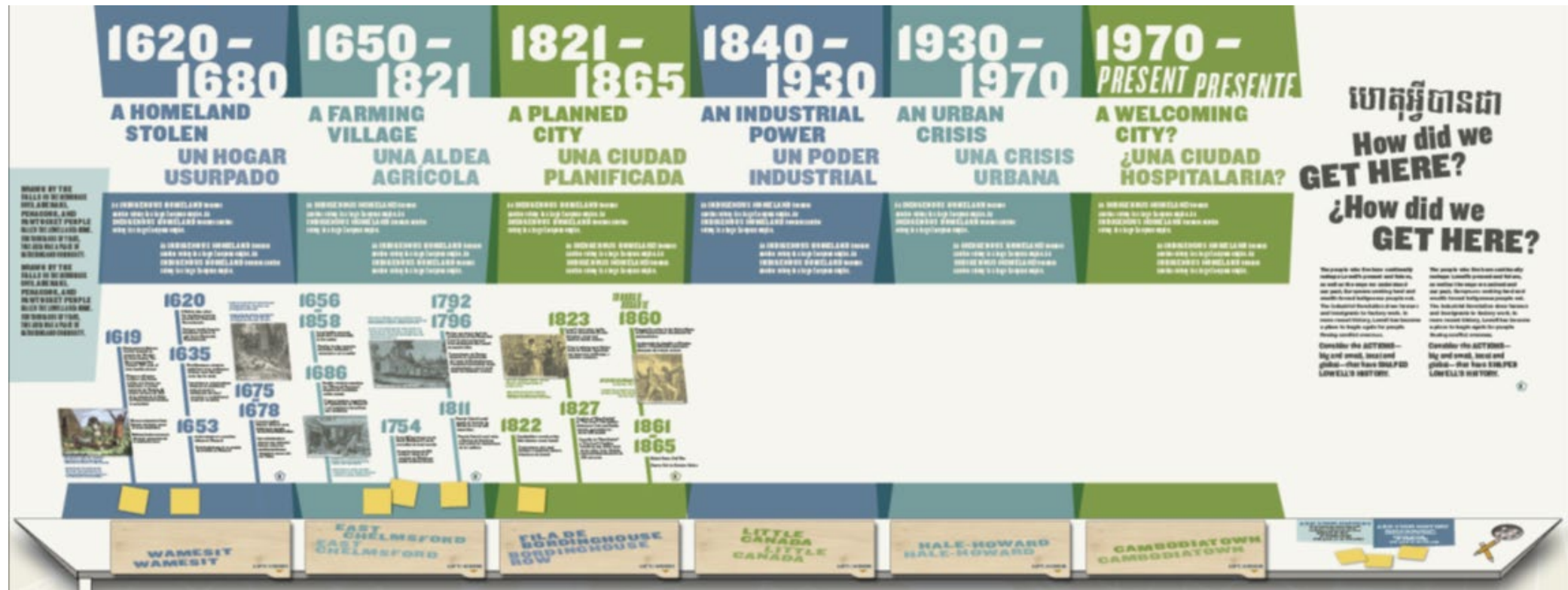
Photograph by xx

CULTURAL EXPRESSIONS / ART

X



Scene 3: Lowell Through Time



Scene 4: Personal Stories

What challenges do we encounter when arriving in a new place?

ដើរ មិនត្រឹមត្រូវ ត្រូវដើរតែឯង

Do we maintain our traditions?

¿Mantenemos nuestras tradiciones?

Who do you consider family? Family can be your kin, but it can also be the people that you choose to be closest to you. Some people feel a strong connection to one family. Some belong to many families. Some have no family, possibly not by choice.

However we define them, families shape us. Parents, friends, grandparents, siblings, and coworkers all help us form our identity. By telling us stories about the past they pass on traditions.

But most of us make some choices about our family. The identity, history, and traditions we embrace are different from those of our neighbors—or even other family members. We each have to choose what we want to take from our family, and what we want to share with the next generations.

Explore—and ask yourself:

Are TRADITIONS IMPORTANT to you?
Does YOUR FAMILY have any traditions?
How do YOU FEEL about them?
How do you BLEND YOUR TRADITIONS with new things?
What happens when we CHANGE or LOSE traditions?

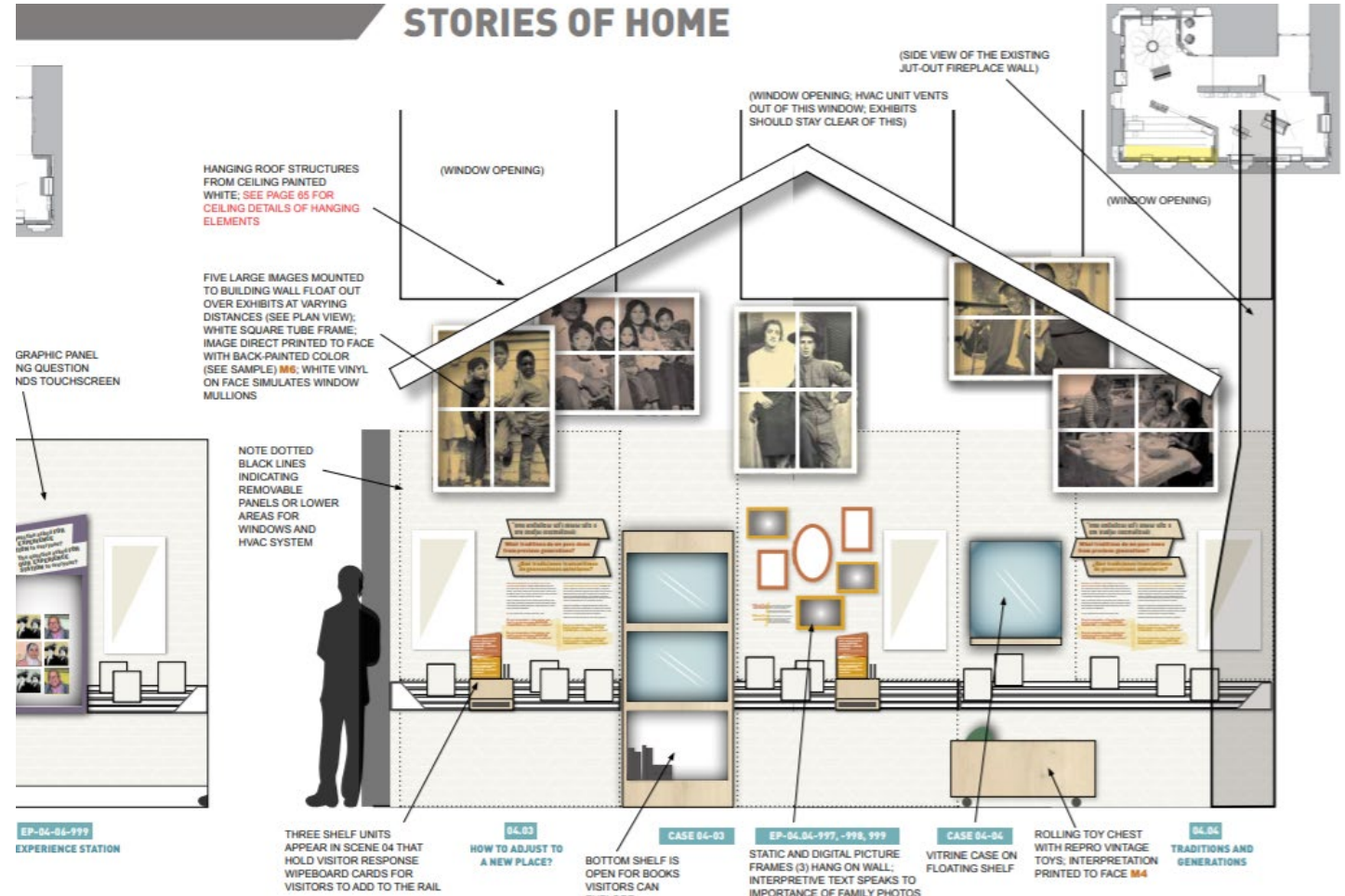
¿A quién consideras tu familia? Tu familia pueden ser tus parientes, pero también puede ser la gente que eliges tener cerca. Algunas personas sienten una conexión muy fuerte con una sola familia. Otras pertenecen a muchas familias. Algunos no tienen familia, aunque probablemente no por elección propia.

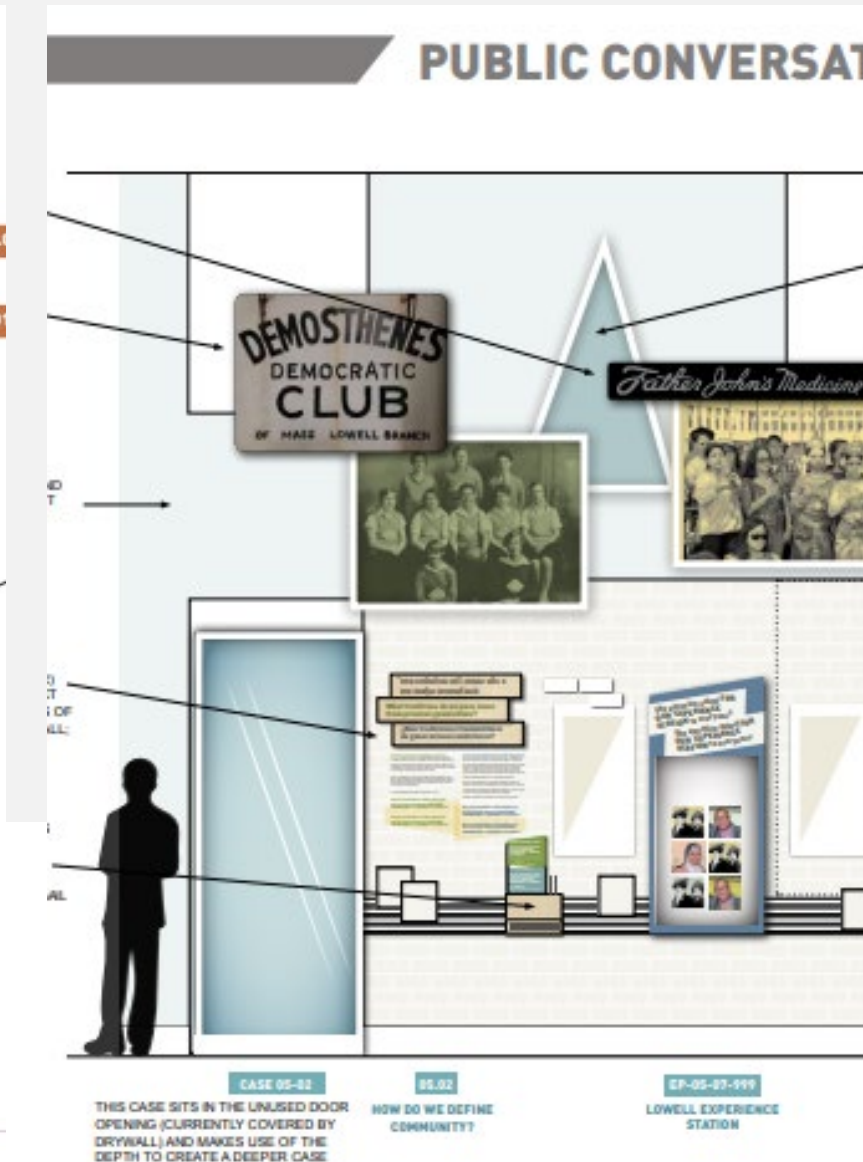
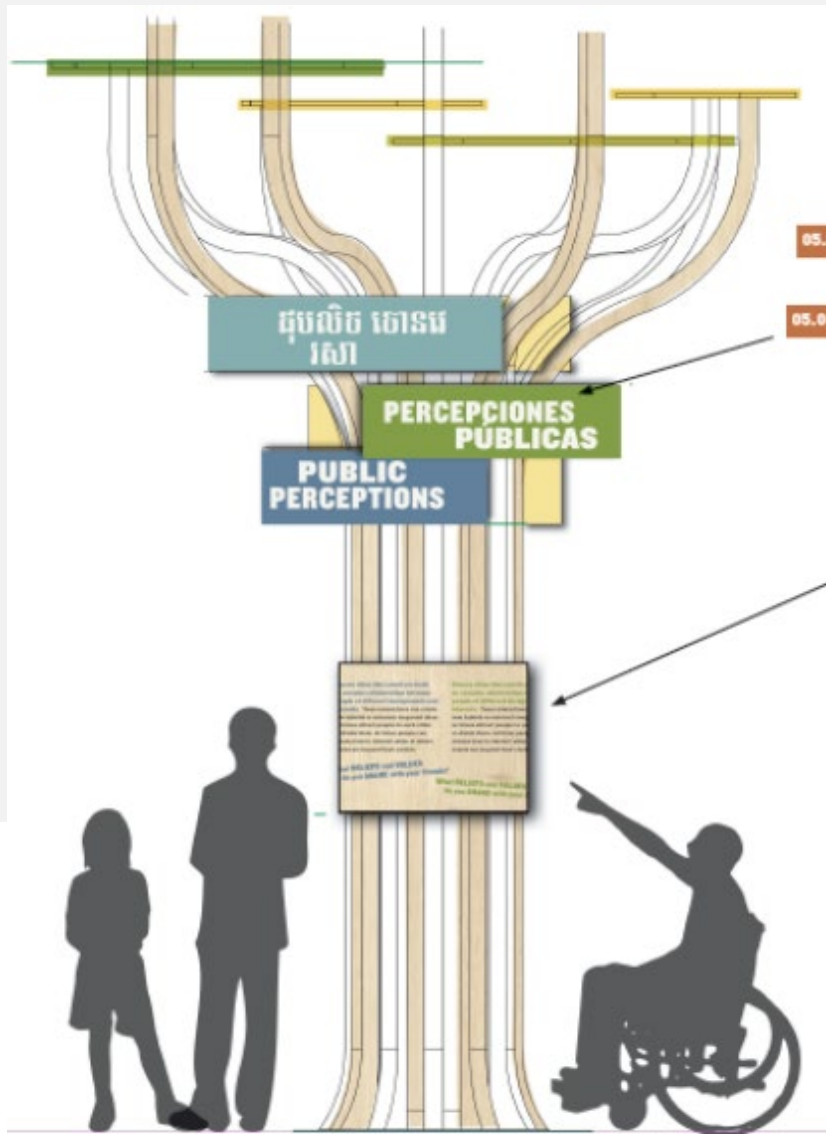
Sin importar cómo las definamos, las familias nos moldean. Nuestros padres, amigos, abuelos, hermanos y compañeros de trabajo nos ayudan a dar forma a nuestra identidad. Al contarnos historias del pasado, nos transmiten tradiciones.

Sin embargo, la mayoría de nosotros hacemos ciertas elecciones acerca de nuestra familia. La identidad, la historia y las tradiciones que adoptamos difieren de las de nuestros vecinos, o incluso, de las de otros miembros de nuestra familia. Cada uno de nosotros elige lo que quiere tomar de su familia y lo que quiere compartir con las siguientes generaciones.

Explora y pregúntate:

¿Las TRADICIONES SON IMPORTANTES para ti?
¿TU FAMILIA tiene tradiciones?
¿Qué PIENSAS sobre ellas?
¿Cómo COMBINAS TUS TRADICIONES con cosas nuevas?
¿Qué ocurre cuando CAMBIAMOS o PERDEMOS tradiciones?





Scene 5: Public Conversations

Where do we find community?

What challenges do communities face?

Scene 6: Storybooth

Sharing and Reflecting

SCENE 06

TELL YOUR STORY

GRAPHIC WALLPAPER ON
REMOVABLE PANEL TO ACCESS
WINDOW AND DOOR BEHIND

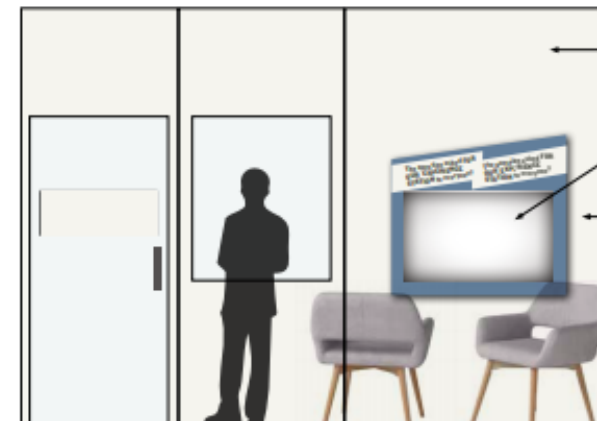


SL-01
STORYBOOTH
RECORDING AREA



GRAPHIC WALL OF FACES
MIRRORS GRAPHIC FROM
SCENE 01. THIS WILL BE WHAT
IS BEHIND VISITORS AS THEY
RECORD THEIR STORY

A MIRRORRED PANEL IS AT THE
CENTER OF THE FACES TO PUT
THE VISITOR INTO THE EXHIBIT



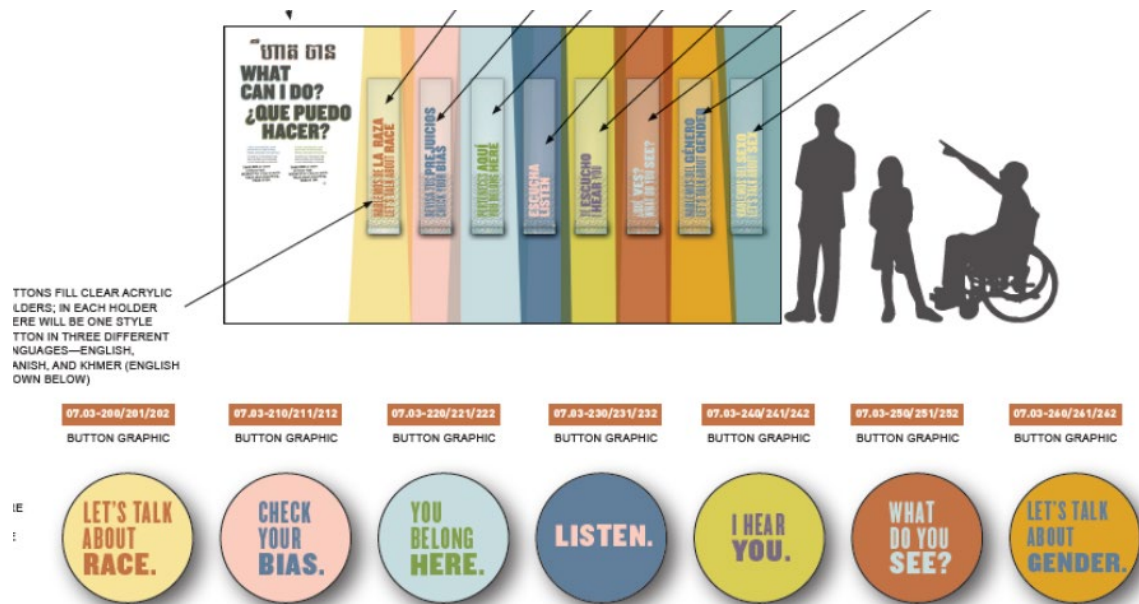
WALLS PAINTED

EP-SL-03-999
STORYBOOTH MONITOR

GRAPHIC MONITOR COVER
MATCHES THE SHAPE OF THE
'MY EXPERIENCE' STATIONS

TWO INEXPENSIVE
BUYOUT CHAIRS;
IMAGE FOR
REFERENCE ONLY

Scene 7: A Lively Community



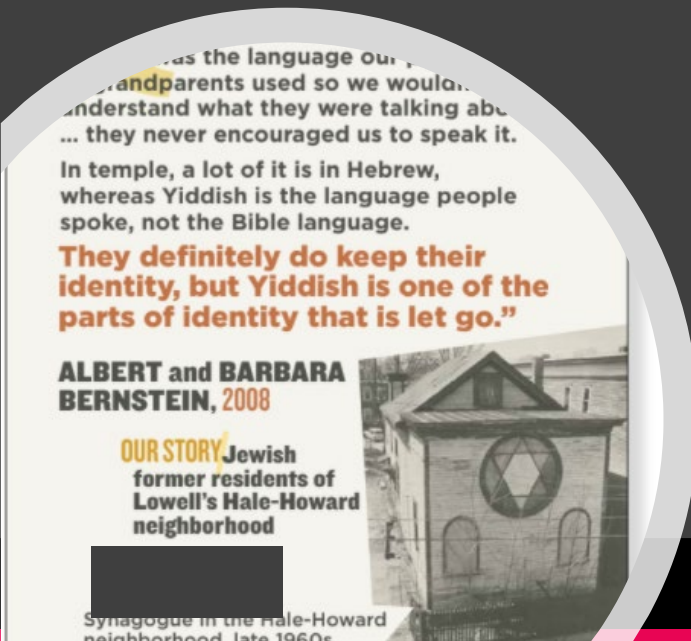
SAMPLE OF MAGNETIC
PIECES; SHOWN AT
FULL SIZE; SHAPES WILL
DIFFER





Please be involved!

- What stories do you have that should be told in this exhibition?
- Do you know of an object or image that ought to be shown in the exhibition?
- Musical instrument?
- Decorative tableware?
- Decorative arts or apparel?
- Please share the word about this project with your friends and neighbors!



Discussion

We want to tell the whole story of Lowell:

Objects, images, and stories using:

- Table settings, foods, feastware.
- Visual and decorative art.
- Mementos or keepsakes and their stories.
- What are we missing? Let us know!



Questions?

Emily Donovan – emily_donovan@nps.gov Project Manager
Bridget Peregrino – bridget_peregrino@nps.gov Project Manager
Kevin Coffee – kevin_coffee@nps.gov Chief of Interpretation and Education
Laurel Racine – laurel_racine@nps.gov Chief of Cultural Resources

(978) 970-5000

www.nps.gov/Lowell

@LowellNPS