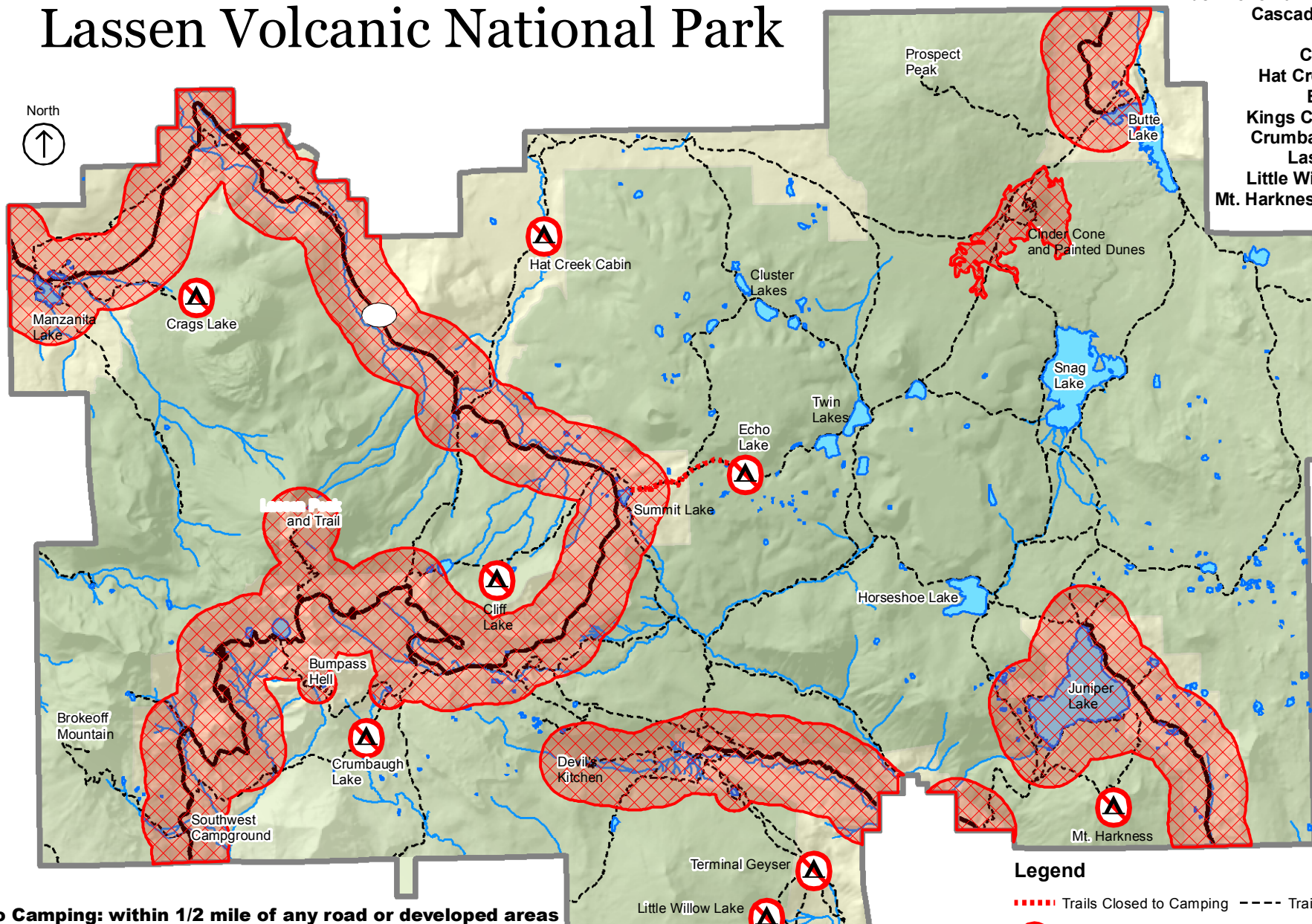


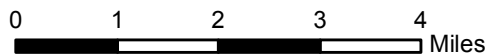
Backcountry Camping Restrictions Lassen Volcanic National Park

CLOSED TO CAMPING 1/4 MILE IN ALL DIRECTIONS:

- Kings Creek Meadow - Upper & Lower
- Trail from Summit Lake to Echo Lake
- Cinder Cone/Painted Dunes
- Cascade Springs
- Cliff Lake
- Crags Lake
- Hat Creek Cabin
- Echo Lake
- Kings Creek Falls
- Crumbaugh Lake
- Lassen Peak
- Little Willow Lake
- Mt. Harkness Summit



No Camping: within 1/2 mile of any road or developed areas
 within 100 feet of creeks and lakes
 within 1/4 mile of any hydrothermal features
Camping by stock groups is prohibited except at designated campgrounds.



Legend

- - - - Trails Closed to Camping
- Trails
- ▲ Areas Closed to Camping
- Roads
- Wilderness
- No Camping Zone