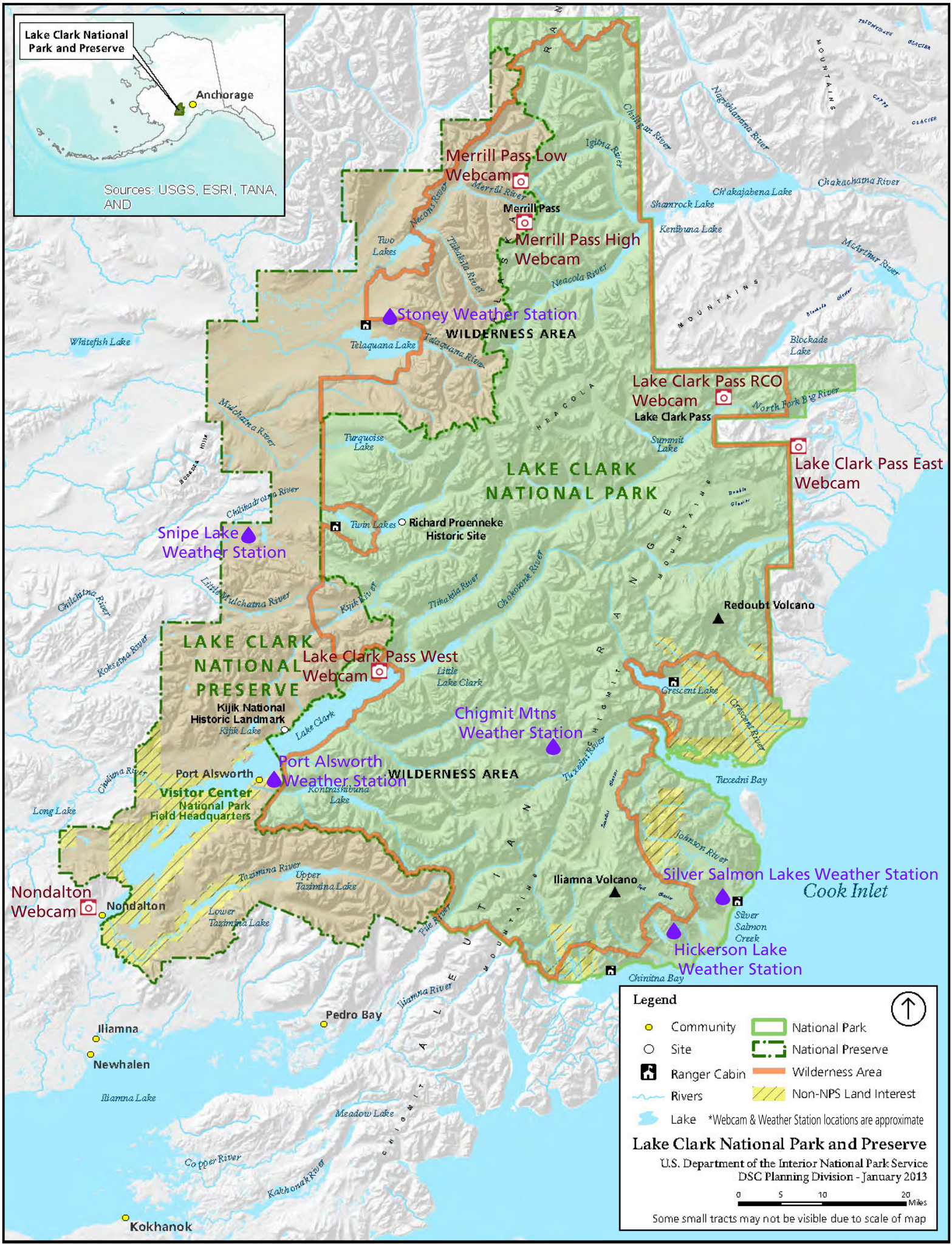


Lake Clark National Park and Preserve

Anchorage

Sources: USGS, ESRI, TANIA, AND



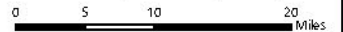
Legend

- Community
- Site
- 🏠 Ranger Cabin
- ~ Rivers
- ▭ Lake
- ▭ National Park
- ▭ National Preserve
- ▭ Wilderness Area
- ▭ Non-NPS Land Interest



Lake Clark National Park and Preserve

U.S. Department of the Interior National Park Service
DSC Planning Division - January 2013



Some small tracts may not be visible due to scale of map