



The Keweenaw Guide

The official newspaper of Keweenaw NHP and the Keweenaw Heritage Sites



NPS/Lynette Webber

Welcome

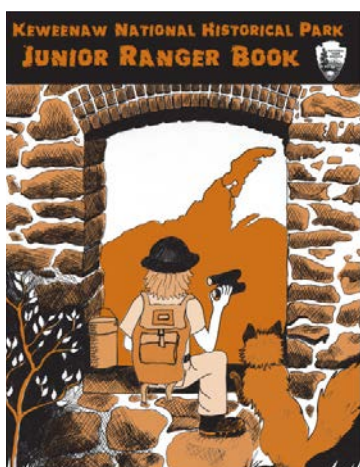
Welcome to Keweenaw National Historical Park (NHP) and the Keweenaw Peninsula of Michigan! Keweenaw NHP lies within the ancestral and current homelands of the Ojibwa people. Here, the stories of people and copper have been intertwined for more than 7,000 years. The story of copper began much earlier. Keweenaw copper deposits were formed by one of the oldest and largest lava flows known on Earth. American Indians mined, used, and traded copper across North America for thousands of years before immigrants from around the world came and formed one of the first industrial mining operations in the United States. Northern Michigan became home to dozens of different nationalities who have left their mark, creating a distinctive Keweenaw culture. Communities grew around the mine locations. Schools, churches, libraries and other company-provided amenities supported the workers, management, and their families. Technological advancements were made in the extraction and processing of the copper and, paired with the changing economic and social environment, sparked labor protests. As in most industrial communities, these communities first declined and then adapted as mining ceased, and continue to reinvent themselves today.

Keweenaw NHP was created by Congress as a partnership park. That means the National Park Service owns minimal facilities and works with partners in the community to preserve and tell the story of the entire peninsula. The Keweenaw Heritage Sites, local governments, community organizations, and the park's Advisory Commission all work together to create the national park experience.

From October 2022-2023 Keweenaw NHP is commemorating its 30th anniversary. We are taking this year to build stronger partnerships and plan for the next 30 years and beyond. We value milestones like these, not just to celebrate, but to connect with our partners, reflect on what our partnership has created, and see how far we have come. We believe that partnership between government and private enterprise can serve the greater good of both. The NPS, the Keweenaw Heritage Sites, community partners, local governments, and the Advisory Commission exemplify this. Together we protect this historic landscape and tell the story of Keweenaw copper.

We hope that you will experience and explore these stories and places for yourself. Journey to a time when Copper was King, experience the beauty and history of the Keweenaw, and make your own memories that will last a lifetime.

2023 Park Programs



Junior Ranger and Junior Ranger Explorer programs

Are you ready to begin your Junior Ranger adventure? Keweenaw NHP offers two different booklets full of activities designed to help you engage with the park. The Junior Ranger Explorer program is geared toward children 4-6 and the Junior Ranger Program is designed for ages 7 and older, but all ages can participate in either activity book. Free books are available at the Calumet Visitor Center or online at www.nps.gov/kewe/learn/kidsyouth/beajuniorranger.htm.

Turn in completed books to the visitor center where a ranger will swear you in, sign your certificate, and present you with your official sticker or badge. Completed books can also be mailed to:

Keweenaw NHP
Division of Interpretation
25970 Red Jacket Road
Calumet, MI 49913

Or email them to: kewe_information@nps.gov.

Ranger guided tours, programs and demonstrations in the Quincy and Calumet Units

Please visit the Calumet Visitor Center information desk, check the park's calendar of events at www.nps.gov/kewe/planyourvisit/calendar.htm or follow our social media pages to get the latest schedule of tours, programs, demonstrations, and events. Ranger programs last about 1 hour and cover approximately 1 mile. Water and sunscreen is recommended. In the event of inclement weather or staffing shortages, programs will be cancelled.



NPS/Lynette Webber

Places to Visit

4-7



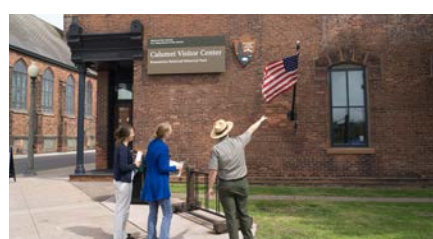
Featured Articles

2,3,7



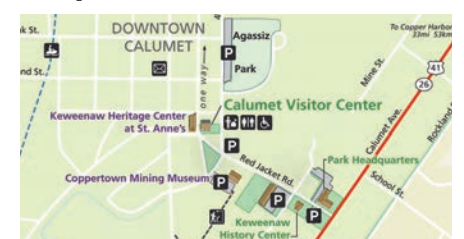
Essential Information

2



Maps

4-5,8





Keweenaw National Historical Park
25970 Red Jacket Road
Calumet, MI 49913

Park Headquarters:
906-337-3168

Calumet Visitor Center:
906-483-3176

Fax: 906-337-3169

Web: www.nps.gov/kewe  

Printing of The Keweenaw Guide courtesy of the Isle Royale and Keweenaw Parks Association.



The National Park Service cares for the special places saved by the American people so that all may experience our heritage.

Essential Information

CALUMET VISITOR CENTER



The Calumet Visitor Center is located in downtown Calumet at the corner of 5th Street and Red Jacket Road. It provides information on the many Heritage Sites to visit in the Keweenaw as well as 3 floors of exhibits, a park film, and an Isle Royale & Keweenaw Parks Association (IRKPA) bookstore that sells videos, posters, books, clothing, and more. Contact the Calumet Visitor Center at 906-483-3176.



NPS/Kathleen Harter



The NPS Mobile App has tools to explore more than 400 national parks nationwide. Find interactive maps, tours of park places, on-the-ground accessibility information, and much more to plan your national park adventures before and during your trip. Keweenaw NHP features include self-guided tours of both the Quincy and Calumet Units. The free app is currently available for iOS and Android devices.

Safety

Dial 9-1-1 in Emergencies. As most of the property within Park boundaries is privately owned, be prepared to give your location. You should report fires, accidents, or life-threatening emergencies. Some areas within the park or Heritage Sites are considered remote, possibly without cell phone service. You may have to find the nearest land line.

Visit Keweenaw provides information about lodging and food in the area. Contact them at 906-337-4579 or visit www.visitkeweenaw.com.

Pets

All park buildings are closed to dogs, cats, and other pets. Service animals, as defined by law, are allowed. Pet excrement must be immediately collected and disposed of in the nearest trash receptacle.

Accessibility

All Calumet Visitor Center exhibits and park headquarters are wheelchair accessible. A wheelchair is available for use during your visit. Many of the Keweenaw Heritage Sites also have facilities or services that are wheelchair accessible however not all sites are fully accessible at this time. Contact the site for specific information.

The Keweenaw History Center (Park Archives) is open to researchers and scholars by prior appointment. Please call 906-483-3032.

Weather

No matter the season, know the current weather forecast. Summer can bring thunderstorms, while winter snowstorms can make travel or exploration hazardous.

Passenger Carrying Buses

While bus parking is permitted in the small parking area next to the Calumet Visitor Center, it is strongly suggested that buses offload passengers and park elsewhere. Additional bus and visitor parking is available between Warehouse #1 and the History Center (park archives) on Red Jacket Road. Buses may not idle; engines must be shut down when the bus is not underway to prevent the accumulation of exhaust fumes in the visitor use area.

Connectivity

Some areas have limited or spotty cellular phone and data service. Please plan accordingly. The NPS Mobile App can be downloaded for offline use prior to arrival.

Recreational Opportunities

A variety of hiking trails, museums, heritage centers, lighthouses, guided or self-guided tours, geocaching opportunities, and more await. For a full list of opportunities visit www.nps.gov/kewe/planyourvisit/things2do.htm

The use of bicycles and ebikes is permitted on established routes on park-owned lands within the Quincy and Calumet Unit Boundaries. The use of bicycles and ebikes on established routes on non-federal property within the park boundary are governed by prevailing state, county, township or village laws and ordinances, and postings by private land owners. A bike rack is provided at the Visitor Center in Calumet.

Visit the historic Quincy Smelting Works

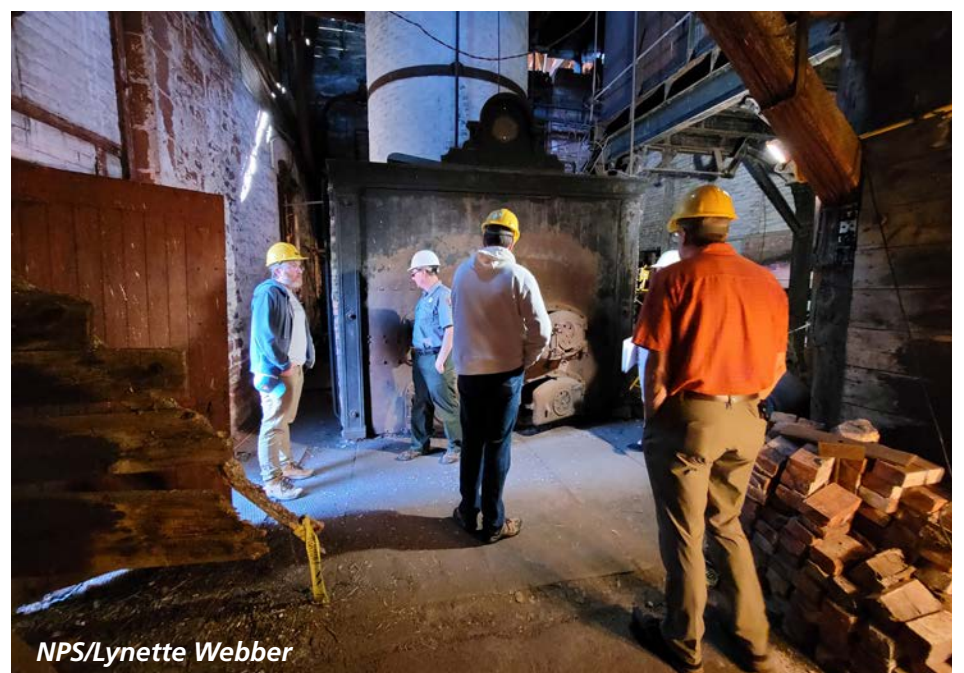
The Quincy Smelting Works, lying on the northern shore of Portage Lake, is the most complete set of buildings and technology representing historic copper smelting practices in the Keweenaw (and likely the world). First opened in 1898, the smelter operated for over 70 years, and its closure marked the end of the historic copper mining era.

Smelting had been an important part of the local industry for decades before Quincy decided to build its own facility, which enabled it to control all aspects of copper production from mining, milling, smelting, to finally shipping. Native copper, at this stage commonly called "mineral," was brought to local smelters by rail from stamp mills operating on the nearby shores of Torch Lake and Lake Superior. The mineral was loaded into several coal-fired furnaces on site where it was melted down via indirect heat. The molten copper was then poured into a variety of molds and given a water bath to set. Once cooled, the copper ingots and cakes were stacked alongside the dock where they awaited shipment to brass foundries, wire mills, and other industrial plants all over the United States.

The Keweenaw National Historical Park Advisory Commission purchased the smelter property in 2014 thanks to the help of community fundraising efforts. Since then, the Commission has been working with the National Park Service to stabilize, clean up, and ultimately transfer the property to Keweenaw NHP ownership so that together, the park and its partners can preserve and interpret this one-of-a-kind facility and share it safely with the public. Acquiring the smelter so it can be preserved and interpreted for future generations helps extend the park's mission by completing

the story of the three-step process of copper mining: extraction, processing (milling), and refinement (smelting).

The Advisory Commission invites you to visit and tour the one-of-a-kind historic Quincy Smelting Works this summer and be on the lookout for a Haunted Halloween tour at the smelter this fall. Tours are available through the Quincy Mine Hoist Association's website, <https://quincymine.com> or by phone at 906-482-3101.



NPS/Lynette Webber

Keweenaw NHP at 30 and the National Park Idea

In many ways 1992, when Keweenaw NHP was established, can seem like yesterday. But to put it in perspective, thirty years prior to that, John F. Kennedy was president, the Rolling Stones gave their first performance, and the first Nike shoe was created. It was almost that long ago too that the initial ideas for the park were first proposed.

In 1968, Universal Oil Products (UOP) announced the closure of the Calumet Division and the end of mining at the Calumet & Hecla Mining Company properties in the Keweenaw. The company proposed large-scale development of both recreational and heritage-based tourism in the Keweenaw as a way to bolster the local economy, based on the two great strengths of the area: its natural beauty, and rich cultural history.

UOP's plans for Coppertown USA were never fully realized, but the people of Calumet were inspired because they knew they lived in a truly special place. They sought to document the nationally significant history of the Keweenaw and convince Congress to designate the area a National Historical Park. In doing so, they hoped to preserve the Copper Country's cultural landscapes, towns, industrial sites, photographs, and records, and the stories they tell, while revitalizing the community.

It was a genuine grassroots effort, involving people from local government, non-profit organizations, volunteer groups already engaged in preserving and sharing local history, church congregations, local schools, and experts from Michigan Technological University. The community raised funds, through fish boils at the Calumet Colosseum and other events, so that they could send representatives to Washington, DC to lobby Congress and the National Park Service. On those trips, they presented petitions like the one pictured above, signed by thousands of local people advocating for a new National Park.

They were successful in bringing study committees to the area, as well as historians, the director of the National Park Service, and the Secretary of the Interior. Subsequently, two National Historic Landmark Districts were established in the Copper Country, building on work done in the area in the 1970s as part of documentation efforts by the Historic American Engineering Record and the Historic



Park nominations to go before board

MARYSUE DETTLOFF
Gazette writer

NEW ORLEANS — The National Park Service Advisory Board will meet Monday in New Orleans and among the agenda items is the national historic landmark nominations for the Calumet and Quincy areas.

According to National Park Service historian Laura Felier, the NPS board will consider if the areas ought to be designated national historic landmarks and if they meet the criteria set by the Department of Interior for national historic landmarks.

Felier added the advisory board's approval is only seen as a recommendation to Secretary of Interior Donald Hodel. If the board recommends the sites be designated national historic landmarks, the nominations will be sent to Hodel for final approval.

Felier said if the advisory board recommends the sites, it's realistic to expect Hodel to approve the sites before he leaves office in January.

The two sites are basically properties in which former mining company operations existed and the communities immediately surrounding them. On top of Quincy Hill near Hancock, the landmark nomination includes all the former Quincy Mining Co. buildings and ruins from the shaft-rockhouse on the hill, down to the former smelter operations. It extends to the Boston Road and includes some worker housing. In Calumet, the site includes all the former Calumet & Hecla Mining Co. properties in and around Calumet, the Calumet downtown district, the Bluestone neighborhood, and the abandoned St. Mary's Church (Italian) on Portland Street.

The same basic areas are being considered for national historic park status.

Felier declined to say she was optimistic the nominations would get approved, but she did say she expected no major problems since members of the advisory board have already reviewed information about the sites.

Under federal law, national historic landmark designation does not affect the right of private owners to take any action regarding their landmark property that they may otherwise take, according to information provided by the NPS.

"Landmark status is designed to foster appreciation for historic values through voluntary, rather than regulatory, means," according to the park service guidelines.

As a preservation incentive, the park service can provide property owners with information and assistance on a number of grants used for historic preservation as mandated by the federal government. Income-producing properties within landmark boundaries are also eligible for tax incentives for historic preservation and restoration. Currently, property owners are eligible for a 20 percent tax credit, according to park service guidelines.

NPS, Keweenaw NHP, Archives, *Daily Mining Gazette* October 21, 1988

American Building Survey. One Landmark District encompassed the Quincy Mine and Smelting Works, and the other included the Village of Calumet and nearby former Calumet and Hecla Mining Company properties. The two Districts were seen as complementary, one demonstrating the industrial and technological aspects of Copper Country history, and the other focusing on the social aspects of Copper Country history. Years of advocacy around the recognized national significance of the Keweenaw by the people of the Copper Country finally culminated in the establishment of Keweenaw NHP by an act of Congress signed into law by President George H. W. Bush on October 26, 1992.

Keweenaw NHP was the 357th unit of the National Park system at its establishment. Thirty years later, there are 424 National Parks; all of them preserve special places set aside by and for the enjoyment of the American people. Keweenaw National Historical Park came about in part because of the hard work and dedication of the people of one small community in rural America with a big nationally important story to share.

Support Your Public Lands

Isle Royale & Keweenaw Parks Association

The Isle Royale & Keweenaw Parks Association (IRKPA) is a non-profit bookstore, publisher, educator and supporter of Isle Royale National Park and Keweenaw National Historical Park. IRKPA's mission is to promote an understanding of, appreciation for, and enjoyment of these two parks. By educating the public about these parks, they help to protect and preserve them for future generations.

To accomplish their mission, IRKPA:

- Operates bookstores at each park as well as an online store.
- Publishes educational books, videos, and posters about the parks.
- Promotes a variety of free publications, such as the park newspapers and visitor guides.
- Offers a variety of adult workshops and research grants.
- Contributes financial support and services to its partner parks.

IRKPA's work is undertaken with generous contributions from members and donors, as well as income earned from bookstores sales and other sources. Consider becoming a member and learn more at www.irkpa.org.

Keweenaw National Historical Park Advisory Commission

The Keweenaw National Historical Park Advisory Commission was established along with the park by an Act of Congress on October 27, 1992. This commission and its members serve at the request of the Secretary of the Interior. The Advisory Commission provides leadership, education, and financial support for the protection, preservation, and interpretation of resources related to the story of copper mining on Michigan's Keweenaw Peninsula.

The goals of the Advisory Commission are to:

- Advise the National Park Service at Keweenaw NHP on park planning, preservation, interpretation and operational matters.
- Develop the Keweenaw Heritage Sites Program into a consortium of fully sustainable sites.
- Develop partnerships that provide visitors with a cohesive, accessible, and engaging national park experience along the entire length of the Keweenaw.
- Promote a historic preservation ethic and emphasize heritage awareness.
- Develop the Commission into a sustainable operating organization.

Learn more about how the Keweenaw National Historical Park Advisory Commission and Keweenaw National Historical Park work together at go.nps.gov/commission.

National Parks of Lake Superior Foundation

The National Parks of Lake Superior Foundation (NPLSF) is the philanthropic partner of the five national parks of Lake Superior. They inspire people to create meaningful connections with our parks by providing funding for programming, educational initiatives, and outreach efforts.

Work NPLSF does to support the parks is funded through grants and private donations. Learn more about NPLSF at www.nplsf.org.



NATIONAL PARKS OF
LAKE SUPERIOR
FOUNDATION



Places to Visit

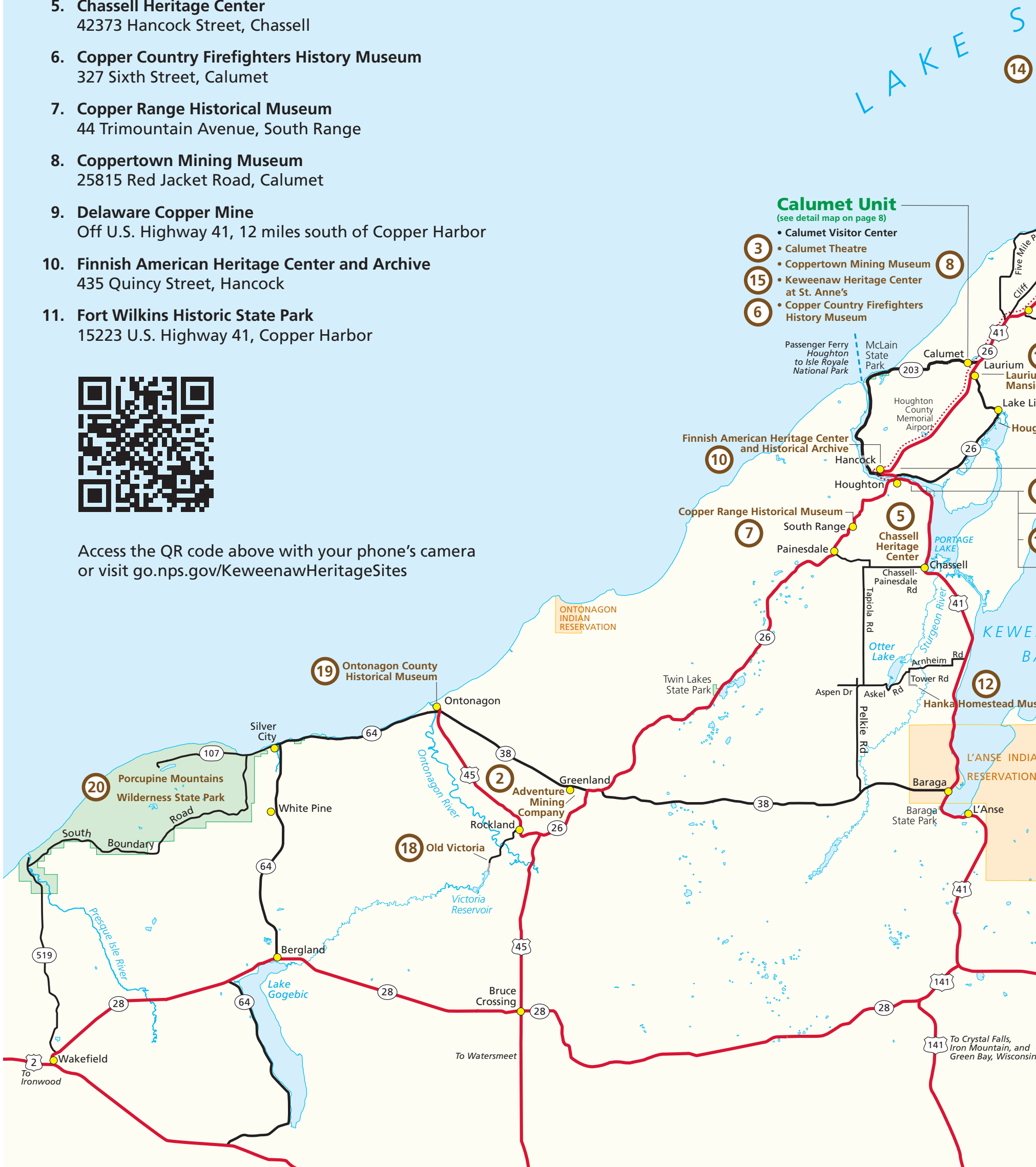


Ready to see more amazing places all connected by our collective copper story? Use this map to find locations of park heritage site partners. Scan the QR code or use the information on the following pages for contact information and additional details to plan your trip.

1. **A.E. Seaman Mineral Museum**
1404 E. Sharon Avenue, Houghton
2. **Adventure Mining Company**
200 Adventure Avenue, Greenland
3. **Calumet Theatre**
340 Sixth Street, Calumet
4. **Carnegie Museum**
105 Huron Street, Houghton
5. **Chassell Heritage Center**
42373 Hancock Street, Chassell
6. **Copper Country Firefighters History Museum**
327 Sixth Street, Calumet
7. **Copper Range Historical Museum**
44 Trimountain Avenue, South Range
8. **Coppertown Mining Museum**
25815 Red Jacket Road, Calumet
9. **Delaware Copper Mine**
Off U.S. Highway 41, 12 miles south of Copper Harbor
10. **Finnish American Heritage Center and Archive**
435 Quincy Street, Hancock
11. **Fort Wilkins Historic State Park**
15223 U.S. Highway 41, Copper Harbor

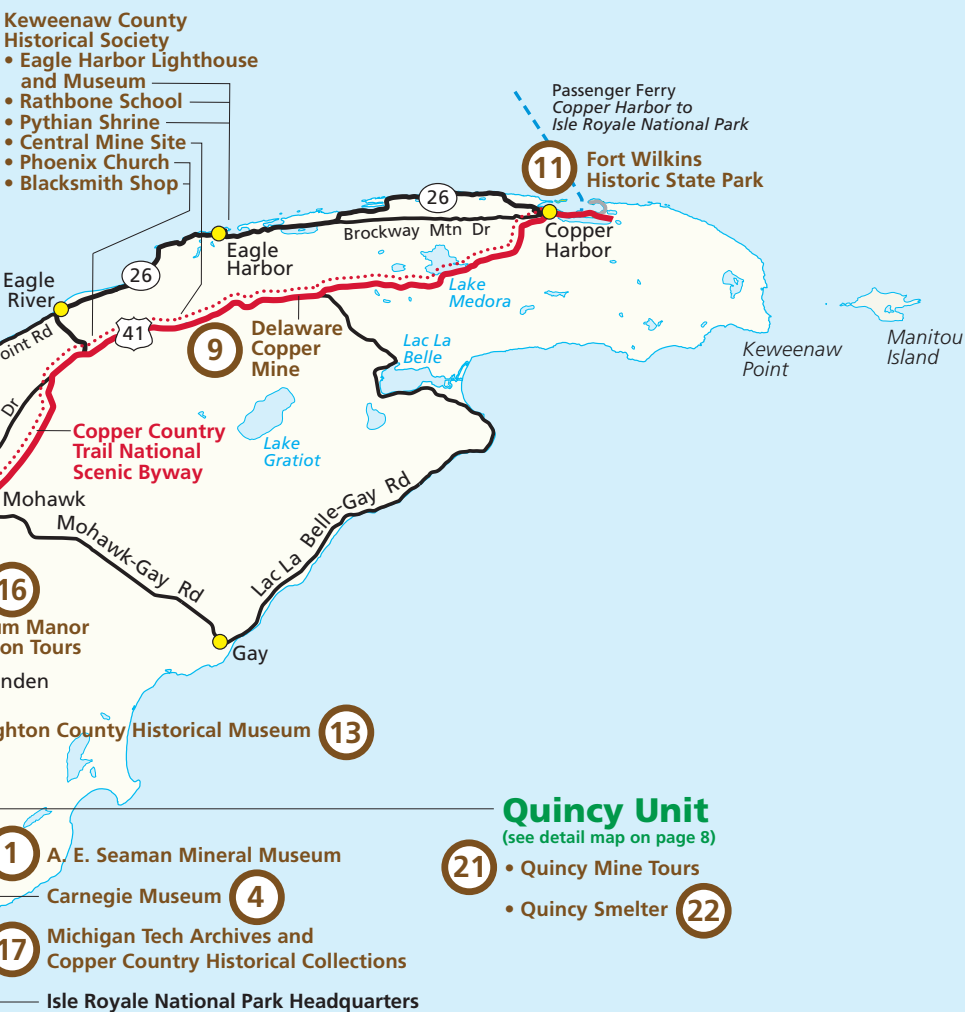


Access the QR code above with your phone's camera or visit go.nps.gov/KeweenawHeritageSites



The Keweenaw Heritage Sites are official partners of Keweenaw National Historical Park. Each site interprets and preserves an important aspect of the area's copper mining history and provides a unique visitor experience. Information about operations at each site were correct to the best of our knowledge at the time of printing this paper. For detailed Heritage Site information and current days and hours of operation, please contact the site directly.

U P E R I O R



Quincy Unit
(see detail map on page 8)

- 21 Quincy Mine Tours
- 22 Quincy Smelter



Places to Visit

A.E. Seaman Mineral Museum

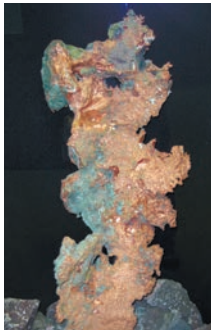
Visit the official Mineral Museum of Michigan to explore the beauty and splendor of minerals from the Michigan copper-mining district, the Great Lakes Region and around the world.

Fees: \$8 Adult, \$7 Senior (65+), \$4 Student (w/ college ID), \$3 Junior (Ages 9 – 17), Children 8 & under free.

Operating Hours: Monday through Saturday, 9 am - 5 pm.

Web: www.museum.mtu.edu 

Phone: 906-487-2572



Adventure Mining Company

Visit Adventure Mine and experience rappelling down a mine shaft, underground drilling and blasting workshops, or an easy guided walking tour. We accommodate all ages, skill levels, and interests. Our 90-minute guided tours and 3-hour rappel tours are offered daily. Online pre-booking is encouraged. Walk-ins welcome and offered as staffing allows.

Fees: Tours \$36 adults, \$16 children (6 to 12 years old), under 6 free. Contact for rates on other tour options.

Operating Hours: May 20 to mid-October, Monday - Saturday, 9 am - 6 pm; Sunday, 11 am - 6 pm (Closed Wednesdays after Labor Day).

Web: www.adventureminetours.com  

Phone: 906-883-3371



Calumet Theatre

Opened in 1900, this historic opera house offers a variety of theatrical, musical and community events year-round. Two hour guided tours available.

Fees: \$15 per person.

Operating Hours: Tours are Tuesday - Saturday at 1 pm.

Contact the box office or visit the website for shows and other event information.

Web: www.calumettheatre.com  

Phone: 906-337-2610



Carnegie Museum

The Carnegie Museum of Keweenaw shows rotating exhibits about the area's cultural and natural history. Founded in 2006, the museum is housed in the former Houghton public library building which was built in 1910.

Fees: free admission.

Operating Hours: Tuesday and Thursday, noon - 5 pm; Saturday, noon - 4 pm. July 5 - Labor Day: Tuesday through Friday, noon - 5 pm; Saturday, noon - 4 pm.

Web: www.carnegiekeweenaw.org  

Phone: 906-482-7140



Chassell Heritage Center

Exhibits follow Chassell's history from its establishment as a lumber mill community in 1888 to today. A collection of vintage clothing provides a glimpse into people's lives. Another collection documents the history of strawberry farming and the Chassell Strawberry Festival which will celebrate its 75th anniversary in 2023. New in 2023 is an historic interpretive trail on the site of the Sturgeon River Lumber Company and Worcester Lumber Company which is accessible from Centennial Park.

Fees: Donations appreciated.

Operating Hours: July 1- August 31: Tuesday, Thursday, & Saturday 1 - 4 pm; Thursday 4 - 8:30 pm, and special events.

Web: www.chassellhistory.org  **Phone:** 906-523-1155




Copper Country Firefighters History Museum

Built in 1898, the historic Red Jacket Fire Station features displays dedicated to the history of fire fighting in Michigan's Upper Peninsula. The historic fire trucks appeal to people of all ages.

Fees: \$3/adult, children free.

Operating Hours: Monday-Saturday, 1-4:30 pm, June 12-October 1.

Web: www.coppercountryfirefightershistorymuseum.com

Phone: 906-281-8822 



Copper Range Historical Museum

Artifact-rich displays depict people's lives and work experiences in the range towns of southern Houghton County during the copper mining era.

Fees: \$1 donation; kids under 12 free; members free.

Operating Hours: Noon - 3 pm; Tuesday - Friday in June & September; Monday - Friday in July & August.

Web: www.pasty.com/crhm 

Phone: 906-482-6125 (leave message) or 906-487-9412



Coppertown Mining Museum

Housed in the former Calumet and Hecla pattern shop, this museum features exhibits on the former copper mining giant's underground and surface operations.

Fees: \$4 for adults, \$2 for 6 to 15 years old, under 6 free. \$3 with a Golden Age passport.

Operating Hours: Mid-June to mid-October, 11 am - 5 pm, Monday - Saturday.

Web: www.uppermichigan.com/coppertown

Phone: 906-337-4354



Delaware Copper Mine

At Delaware Mine, visitors can take a self-guided tour of one of the oldest underground copper mines on the Keweenaw Peninsula.

Fees: \$11, ages 13 & up; \$7, ages 6 thru 12, 5 and under free.

Operating Hours: Daily, mid-May to mid-October.

Web: www.copperharbor.org/portfolio/delaware-mine/ 

Phone: 906-289-4688



Finnish American Heritage Center and Archive

Located on the campus of Finlandia University, the Finnish American Heritage Center houses the Finnish American Historical Archive, the Finnish American Folk School, the Martha Wiljanen Community Hall, the Finlandia University Art Gallery, and the offices of *The Finnish American Reporter*. Regular programming and exhibits highlight Finnish-American culture.

Fees: Free for exhibits, fees for classes and special events.

Operating Hours: Building open Monday - Friday, 9 am-4 pm; Archive research by appointment only.

Web: www.finlandia.edu/fahc/ 

Phone: 906-487-7549



Fort Wilkins Historic State Park

The U.S. Army built Fort Wilkins in 1844 to keep peace in Michigan's Copper Country. It now serves as an example of mid-19th century army life on the northern frontier.

The park also includes the Copper Harbor Lighthouse along with the 1848 light keeper's house and interpretive trails. The lighthouse is reached by boat through the summer season.

Fees: Michigan Recreation Passport required.

Operating Hours: Daily.

Web: www2.dnr.state.mi.us/parksandtrails/Details.aspx?id=419&type=SPRK

Phone: 906-289-4215



Hanka Homestead Museum

Herman Hanka homesteaded here with his family after he was injured in a copper mining accident. Volunteers, when available, provide guided tours of this 1920s-era Finnish Farm. A self-guided brochure is also available. Request prior notification for large groups for scheduling available guides.

Fees: Adults \$4, ages 13-17 \$1, 12 and under free.

Operating Hours: Memorial Day - Labor Day Tuesday, Thursday, Saturday, Sunday noon - 4 pm.

Web: www.hankahomesteadmuseum.org 

Phone: 906-334-2575



Houghton County Historical Museum

Explore this seven-building complex, which includes a museum containing artifacts and photographs spanning 100 years, a one-room schoolhouse, a log cabin, a railroad depot, a research center and an operating 1915 era steam locomotive.

Fees: donation.

Operating Hours: Daily, June - September, noon - 4 pm; October, call for schedule.

Web: www.houghtonhistory.org  

Phone: 906-296-4121



Keweenaw County Historical Society

The Historical Society maintains 11 sites in Keweenaw County. The Eagle Harbor Lighthouse Museum Complex includes the lighthouse, Maritime, Keweenaw History and Commercial Fishing Museums.

Other sites include Rathbone School, Eagle Harbor Lifesaving Station, Central Mine, Phoenix Church, Bammert Blacksmith Shop, Eagle River Museum, and the Historic School at Gay. The Keweenaw County Historical Society has eight sites. The Eagle Harbor Light Station includes the Eagle Harbor Lighthouse, Maritime Museum, Keweenaw History Museum and Commercial Fishing Museum.


Fees: Eagle Harbor Lighthouse Museum Complex \$8; children under 16 free. Other sites encourage donations.

Operating Hours: Eagle Harbor Lighthouse Museum Complex open Daily June 18 - October 8; June, September, October & Sundays, noon - 5 pm; July & August, 10 am - 5 pm. Other sites open daily are: Central, Eagle Harbor Lifesaving Station, Phoenix Church, Rathbone School, and Bammert Blacksmith Shop.

Eagle River Museum is open Wednesday, Friday and Saturday, noon - 4 pm.

Historic School at Gay is open Wednesday and Saturday, 1 - 4 pm.

Check website for updates and more info.

Web: www.keweenawhistory.org 




Keweenaw Heritage Center at St. Anne's

Located at the head of downtown Calumet's commercial district, the Keweenaw Heritage Center, formerly St. Anne's Church, is a pivotal structure of the Calumet Downtown National Historic Landmark District. Check for dates of performances on for concerts featuring the 1899 Barckhoff organ.

Fees: \$4 adults, 18 and under free with an adult.

Operating Hours: June 27, Monday - Friday, 1 - 4:30 pm.

Web: www.keweenawheritagecenter.org 

Phone: 906-337-2410



Ontonagon County Historical Society Museum

The museum features exhibits on area mining, logging, farming, marine, and social memorabilia. Tours are provided of the nearby lighthouse.

Fees: Lighthouse tours \$5 for adults and teens, Museum tours by donation.

Operating Hours: Open mid-May through mid-October.

Lighthouse tours 11 am - 3 pm, seven days per week.

Museum open 10 am - 4 pm, Tuesday - Saturday.

Web: www.ontonagonmuseum.org 



Phone: 906-884-6165



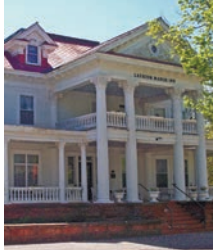
Laurium Manor Mansion Tours

Thomas Hoatson Jr., owner of the Calumet & Arizona Mining Company, built this 45-room, 13,000 sq. ft. home in 1908 using the finest and rarest building materials available. Self-guided tours. Lodging available year round.

Fees: \$15 adults, \$10 children 18 and under.

Web: www.laurium.info  

Phone: 906-337-2549



Porcupine Mountains Wilderness State Park

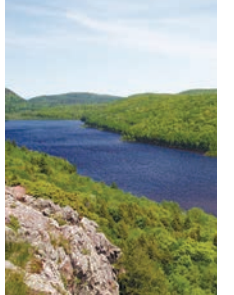
In addition to wild forests and lakeshore, Michigan's largest state park has numerous historical copper mining sites. The 59,020-acre park offers an array of summer and winter recreational pursuits and interpretive programs.

Fees: Michigan Recreation Passport required.

Operating Hours: Daily 8 am - 8 pm.

Web: www.michigandnr.com/ParksandTrails/Details.aspx?id=426&type=SPRK 

Phone: 906-885-5275



Michigan Tech Archives and Collections

The Michigan Tech Archives house a wide variety of print, graphic and manuscript resources. The department's holdings include collections from the Quincy Mining Company and Calumet & Hecla Mining Company, and resources on local and university history.

Fees: none.

Operating Hours: Open Monday - Thursday by appointment only, 1 - 5 pm.

Web: www.mtu.edu/library/archives   

Phone: 906-487-2505



Quincy Mine Tours

On a two-hour tour of the Quincy Mine, visitors take a guided walk through the hoist house, ride a cog-rail tram, and enter the mine to learn about mining life. Shorter, surface-only tours are also available.

Fees: Full tour \$35 adults, \$20 youth/student w/ ID, under 5 free.

Operating Hours: Friday, Saturday, Sunday and Daily starting Memorial Day, 8:30 am - 5 pm.

Web: www.quincymine.com 

Phone: 906-482-3101




Old Victoria

Four log cabins built at the Victoria Mine in 1899 served as homes to waves of copper miners and their families. They have been restored at their original remote mining location and give visitors a true feeling of the life faced by copper miners and their families. Guided tours will take you back in time for an hour.

Fees: Donations.

Operating Hours: June 15 to Labor Day, 11 am - 5 pm,

Wednesdays, Fridays, Saturdays, and Sundays.

Phone: 906-886-2617 



Quincy Smelter

Quincy Smelter (1898) is the oldest and most intact smelter from this time period in the world. Visitors can tour the works and learn about the final processes involved in moving copper ore to final product.

Fees: please call for tour fee.

Operating Hours: Beginning May 29, tours at 11 am, noon,

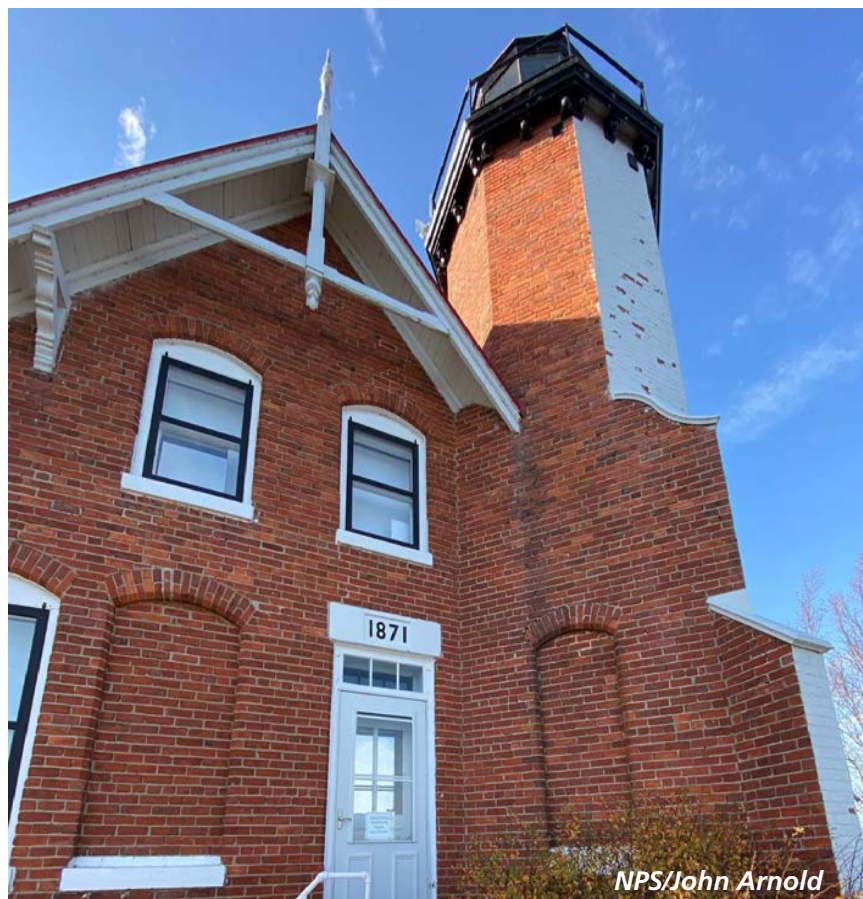
1 pm, 2 pm.

Web: quincymine.com/smelter-tour/ 

Phone: 906-482-3101



A Growing Community of Preservation



NPS/John Arnold

The Keweenaw Peninsula is known to many visitors today as an outdoor recreation wonderland, featuring miles of trails connecting lakeshores to clifftops through seemingly endless forests and wetlands. Despite the sense of wildness, this is a heavily modified cultural landscape that embodies thousands of years of human settlement and over a century of intensive industrial operations—a fascinating history that makes exploring the Peninsula all the more interesting. Most of today's recreation trails follow old railroad grades that tethered mines to mills to smelters and joined the residential and commercial communities that supported the industrial enterprise.

It also makes preserving and interpreting the story of copper on the Keweenaw Peninsula all the more challenging: its history is too rich, deep, and wide-ranging to be fully told by any one organization. Spanning from Fort Wilkins in the north to the Porcupine Mountains in the south, thousands of historic buildings and structures of Michigan's Copper Country are preserved and interpreted not

only by Keweenaw NHP at Calumet and Quincy, but also by our 21 formal Heritage Site partners, multiple townships and communities, and innumerable private property owners. As a partnership park, Keweenaw NHP fulfills an advisory (not regulatory) role in the preservation of these historic resources by providing technical assistance to property owners across the peninsula.

Keweenaw County Historical Society (KCHS) is one of the Keweenaw Heritage sites, a non-profit site responsible for numerous properties, including the Eagle Harbor Lighthouse complex. Keweenaw NHP staff worked with KCHS to determine the origin of wind-driven water intrusion into the lantern and tower at the lighthouse and provided assistance as they prepared a grant application for funding to hire an experienced contractor to execute the required repair work.

Further south along the peninsula, Calumet Township is another entity responsible for multiple historical buildings. After mining operations closed and the region began to feel the effects of population decline, forward-thinking officials with the Township acquired several redundant industrial buildings to prevent their demolition, either intentionally or by simple neglect. Keweenaw NHP has been helping the Township by providing funding for a seasonal youth crew to clear brush and vegetation from the perimeter of their many buildings, and to clean and repair the interior of historic buildings, such as the C&H Mine Captain's Office.

The Keweenaw Economic Development Alliance and Main Street Calumet, along with the Village of Calumet and the Houghton County Land Bank, have been instrumental in the preservation and rehabilitation of many historic commercial and multi-family residential buildings in the Village, including the Calumet Block at 104 5th St. This building was damaged by a recent devastating fire that destroyed three buildings. Keweenaw NHP staff worked with these local groups and the building owner, contractors, and the Michigan State Historic Preservation Office to stabilize the fire-damaged building and prepare it for rehabilitation.

The positive effect of historic preservation work extends beyond any one building or structure. Preserving or rehabilitating a historic lighthouse, office building, or commercial building is an active demonstration of and investment in the value of the past in our present, and calls attention to adjacent buildings, structures, and sites, most of which have not benefitted from such attention yet. Anyone interested in learning more about historic preservation in practice is invited to visit www.nps.gov/subjects/historicpreservation/index.

Visiting Calumet



Lynette Webber

Along the streets of Calumet, visitors can discover the interactions of many historical forces at play, including social, ethnic, commercial, and paternalistic practices. In Calumet, Keweenaw National Historical Park and its partners tell the stories of an immigrant and migrant mining community and its influences on the past and future.

At the center of the unit is the Calumet National Historic Landmark District, where places to visit include the Calumet Visitor Center, Keweenaw Heritage Center at St. Anne's, Coppertown USA Mining Museum, Copper Country Firefighters History Museum, Calumet Theatre, and the Italian Hall Memorial Park. The park headquarters and Keweenaw History Center (both formerly Calumet & Hecla Mining Company-owned buildings) are also located nearby. Visitors can take part in self-guided walking tours of the downtown or the industrial core, or accompany a National Park Service ranger on a guided tour. For tour information, please contact the park or visit our website.



Visiting Quincy



NPS/Nathan Miller

Exploring the Quincy Unit of Keweenaw National Historical Park rewards the adventurous visitor with above and below ground experiences. Designated a National Historic Landmark District in 1989, the National Park Service and Quincy Mine Hoist Association partner to offer a variety of experiences. Quincy Mine provides guided tours of the underground mine and hoist house, along with self-guided tours of the #2 shaft-rockhouse. Outside exploration of the site is free and open to the public.

Also contained within the Quincy Unit, near the Portage Lake lift bridge, is the Quincy Smelting Works. Although currently enclosed by fencing, everyone is welcome to explore the perimeter of the property. You may also explore inside the fence on guided tours led by the Quincy Mine Hoist Association. Many buildings remain on the site, making it a one-of-a-kind industrial complex. In recent years, some stabilization and preservation work has been accomplished with the hope that the site will be open to more visitors in the future.

