



# **Reporting Information for Commercial Air Tour Operations over National Park Units**

## **2013 ANNUAL REPORT**

*September 2, 2016*

## **About this version**

The 2013 report was initially released in April of 2014. This September 2016 version corrects errors found in the total number of air tours for Hawaii Volcanoes National Park. Tables and charts have been updated accordingly.

## **Acknowledgements**

The following individuals compiled and processed the data submitted by air tour operators, analyzed the data, and produced this report:

- Keith Lusk, Federal Aviation Administration
- Faviola Garcia, Federal Aviation Administration
- Vicki Ward, National Park Service
- Brent Lignell, National Park Service

## Table of Contents

1.0 Executive Summary.....	1
2.0 Introduction .....	2
3.0 Reporting Requirements.....	4
3.1 Introduction .....	4
3.2 Development of Reporting Requirements.....	4
3.3 Implementation of Reporting Requirements.....	7
4.0 Reporting Data for 2013 .....	8
4.1 Park Level Data - 2013 .....	8
5.0 Exempt Park List.....	15
Appendices.....	17
Appendix A. Air Tour Reporting Template .....	18
Appendix B. Maps of Units of the National Park System and NPS Regions.....	19
Appendix C. Exempt Parks List, December 19, 2012 (77 FR 75254) .....	21
Appendix D. Exempt Parks List, March 14, 2014 (79 FR 14569) .....	22

## Tables and Figures

Table 4-1.	Park Operations in 2013 (Alphabetical)
Table 4-2.	Park Operations in 2013 (Highest to Lowest Level of Operations)
Table 4-3.	Air Tour Activity by NPS Region
Table 4-4.	Number of Operators by Park
Table 4-5.	Aircraft Type
Figure 4-1.	High Activity Park Operations as Percent of Nationwide Total
Figure 4-2.	Quarterly Activity in 2013
Table 5-1.	Exempt Park States
Table 5-2.	National Park Units with 50 or Fewer Interim Operating Authority (IOA)

## **1.0 Executive Summary**

The Federal Aviation Administration (FAA) Modernization and Reform Act of 2012 contained a new amendment provision to the National Parks Air Tour Management Act (NPATMA) of 2000. The amendment provision required commercial air tour operators conducting air tours over national park units to begin reporting their activity to the FAA and the National Park Service (NPS).

During the latter part of 2012 FAA and NPS developed the new reporting requirements including the data that would be required to be submitted as well as the frequency of reports and the mechanism by which operators would report. These new reporting requirements came into effect for calendar year 2013.

This report provides some background information on the new reporting requirements and how they were implemented. It also provides a high level overview of some of the reporting data that the agencies received from the initial calendar year 2013 reports received from commercial air tour operators. This information includes data from air tour operators who submitted quarterly reports, as well as data from operators who submitted annual reports for exempt parks. Since some of the reporting information may be business sensitive, no operator specific data is disclosed.

With the submission of the 2013 reports, the agencies now have recent data about the extent of commercial air tour operations over national park units, including temporal information (date and time of day), aircraft type, and number of operations. This information will assist the agencies in implementing other requirements of NPATMA, including prioritizing efforts to develop voluntary agreements at national park units where appropriate.

As with any new requirement, the agencies as well as the air tour operators who are submitting the data are working through some issues associated with the reporting and data collection. These primarily involve the proper input and format of information received on the reporting template. The agencies will continue to review the individual operator reporting submittals to ensure we are receiving the requested data in a readily accessible and standardized format.

## 2.0 Introduction

The *Wendell H. Ford Aviation Investment and Reform Act for the 21<sup>st</sup> Century* (AIR-21) was signed into public law (P.L. 106-181, codified at 49 U.S.C. 40128) on April 5, 2000. Title VIII of this law, called the *National Parks Air Tour Management Act of 2000* (NPATMA) regulates commercial air tour operations over units of the national park system. NPATMA requires the FAA and NPS to develop Air Tour Management Plans (ATMPs) for units of the national park system where an operator has requested authority to provide commercial air tours. The objective stated in NPATMA for ATMPs is to develop acceptable and effective measures to mitigate or prevent significant adverse impacts, if any, of commercial air tour operations upon the natural and cultural resources, visitor experiences, and tribal lands.

Section 49 U.S.C §40128(c) had a grandfathering provision that applied to existing operators (those operators who had operated over a national park unit prior to enactment of NPATMA). It allowed the FAA to grant interim operating authority (IOA) to existing operators who applied for operating authority. The intent was to allow the operators to continue to conduct operations until such time as an ATMP was developed for the park. Essentially IOA was an annual limit on the number of flights an operator could conduct over a national park. The provision allowed FAA to provide an operator with an annual authorization for the greater of -

(i) the number of flights used by the operator to provide the commercial air tour operations over a national park within the 12-month period prior to the date of the enactment of this section; or

(ii) the average number of flights per 12-month period used by the operator to provide such operations within the 36-month period prior to such date of enactment, and, for seasonal operations, the number of flights so used during the season or seasons covered by that 12-month period.

NPATMA also required that the IOA granted under NPATMA to be published in the Federal Register for notice and the opportunity for comment. On June 23, 2005 (see 70 FR 36456-36463) the FAA published a Notice of Interim Operating Authority Granted to Commercial Air Tour Operators Over National Parks and Tribal Lands Within or Abutting National Parks. The list provided the IOA granted to each operator for each national park unit / abutting tribal lands. On October 7, 2005 (see 70 FR 58778-58784) the FAA published a supplemental notice. The supplemental notice republished the IOA alphabetically by park rather than operator.

These annual limits provided to operators in the form of their IOA were the only data available to the agencies in terms of comprehensive air tour activity levels at national parks, since the enactment of NPATMA.

The FAA Modernization and Reform Act of 2012 amended various provisions of NPATMA. Two of them related to reporting. One provision required air tour operators to now begin reporting information to FAA and NPS on their operations. Section 49 U.S.C §40128(d) reads:

*(d) Commercial Air Tour Operator Reports.—*

*(1) Report.— Each commercial air tour operator conducting a commercial air tour operation over a national park under interim operating authority granted under subsection (c) or in accordance with an air tour management plan or voluntary agreement under subsection (b) shall submit to the Administrator and the Director a report regarding the number of commercial air tour operations over each national park that are conducted by the operator and such other information as the Administrator and Director may request in order to facilitate administering the provisions of this section.*

- (2) *Report submission.*— Not later than 90 days after the date of enactment of the FAA Modernization and Reform Act of 2012, the Administrator and the Director shall jointly issue an initial request for reports under this subsection. The reports shall be submitted to the Administrator and the Director with a frequency and in a format prescribed by the Administrator and the Director.

Section 49 U.S.C §40128(a)(5) reads:

*EXEMPTION FOR NATIONAL PARKS WITH 50 OR FEWER FLIGHTS EACH YEAR.—*

- (A) *IN GENERAL.*—Notwithstanding paragraph (1), a national park that has 50 or fewer commercial air tour operations over the park each year shall be exempt from the requirements of this section, except as provided in subparagraph (B).

- (B) *WITHDRAWAL OF EXEMPTION.*—If the Director determines that an air tour management plan or voluntary agreement is necessary to protect park resources and values or park visitor use and enjoyment, the Director shall withdraw the exemption of a park under subparagraph (A).

- (C) *LIST OF PARKS.*—

- (i) *IN GENERAL.*—The Director and Administrator shall jointly publish a list each year of national parks that are covered by the exemption provided under this paragraph.

- (ii) *NOTIFICATION OF WITHDRAWAL OF EXEMPTION.*—

*The Director shall inform the Administrator, in writing, of each determination to withdraw an exemption under subparagraph (B).*

- (D) *ANNUAL REPORT.*—A commercial air tour operator conducting commercial air tour operations over a national park that is exempt from the requirements of this section shall submit to the Administrator and the Director a report each year that includes the number of commercial air tour operations the operator conducted during the preceding 1-year period over such park.

## 3.0 Reporting Requirements

### 3.1 Introduction

This section provides background on how the new amendment provision for reporting was developed and implemented. Section 49 U.S.C §40128(d) requires that each commercial air tour operator, whether they operate under an ATMP, a voluntary agreement, or IOA, submit a report to both the FAA and NPS on the number of commercial air tour operations over each park they operate at and “such other information” as the agencies request. This section also indicates that the reports shall be submitted “with a frequency and in a format” prescribed by the agencies.

### 3.2 Development of Reporting Requirements

Shortly after the FAA Modernization and Reform Act of 2012 was signed, the agencies began discussions on developing and implementing the new reporting amendment provision. The agencies utilized some previous input from the National Parks Overflights Advisory Group (NPOAG), an Aviation Rulemaking Committee (ARC) that provides guidance to the agencies on various issues related to implementation of NPATMA. At a 2007 NPOAG meeting in Scottsdale, AZ the agencies had received a list of the “data fields” that NPOAG members thought important to capture under any new reporting requirements. In addition, the FAA had experience in collecting air tour operator information at Grand Canyon National Park. Under 14 CFR Part 93, Section 93.325 required the air tour operators granted allocations at the park to file quarterly reports with the FAA and specified the content of those reports.

Concurrent with the development of the air tour reporting requirements in 2012, the FAA coordinated with the Office of Management and Budget (OMB) on the agencies proposed information collection activities in accordance with the Paperwork Reduction Act of 1995. A number of public comment periods were provided for the public to comment on the information collection of commercial air tour operator reports. The OMB control number for this data collection effort is 2120-0750. In December 2012, OMB approved these data collection activities for a 3 year period expiring December 31, 2015.

In January of 2013, the FAA and NPS distributed a guidance memo to air tour operators that provided information on the new reporting requirements, the data that were being requested, and how they were to submit the data and the frequency with which they were to submit reports. The FAA and NPS also provided a reporting template, basically an Excel spreadsheet, where operators could input their data.

The following provides some of the information contained in the guidance memo:

**WHO THIS REPORTING REQUIREMENT APPLIES TO:** NPATMA applies to any person who conducts a commercial air tour operation below 5,000 feet above ground level over a unit of the national park system, over tribal lands that are within or abutting a unit of the national park system, or any area within a ½ mile outside a unit of the national park system or less than one mile laterally from any geographic feature within the park (unless more than ½ mile outside the park boundary). On October 25, 2002, the FAA published the final rule (14 CFR Part 136) to fulfill the mandate of NPATMA. The FAA granted Interim Operating Authority (IOA) to those operators who had conducted air tours over national parks prior to the enactment of NPATMA (April 2000). You are receiving this notification and guidance because you hold IOA at one or more national park units that **fall under NPATMA\*** and are subject to these new reporting requirements. (\***Note:** Grand Canyon National Park and park units in Alaska do not fall under the provisions of NPATMA).

**QUARTERLY REPORTING REQUIREMENTS FOR AIR TOUR OPERATORS AT PARKS THAT ARE NOT EXEMPT:** In

accordance with statutory amendment, the FAA and NPS are requiring air tour operators conducting commercial air tours at parks that are not exempt from the requirements of NPATMA to begin collecting information on their air tour operations. The agencies are requiring such operators to submit reports of operations on a quarterly basis beginning with the quarter beginning January 1, 2013 and running through March 31, 2013. Quarterly reports are due to the FAA and NPS no later than 30 days after the close of each quarterly reporting period (first report will be due April 30, 2013). Commercial air tour operators must record air tour flight operations information for each subsequent quarter (April 1 – June 30, July 1 – September 30, October 1 – December 31) and report that information to FAA and NPS no later than 30 days after the close of that quarter.

For standardization and ease of data collection, an Excel spreadsheet reporting template has been developed in which air tour operators can electronically enter their information and data. This reporting template is to be used for those operators who are required to report on a quarterly basis and is available for download at the following websites:

[http://www.faa.gov/about/office\\_org/headquarters\\_offices/arc/programs/air\\_tour\\_management\\_plan/program\\_information/](http://www.faa.gov/about/office_org/headquarters_offices/arc/programs/air_tour_management_plan/program_information/)

<http://www.nature.nps.gov/sound/resources.cfm>

The Excel spreadsheet flight operations reporting template has open fields where operators will input the information and data required by FAA and NPS in accordance with the statute. (A copy of the reporting template is provided in Appendix A of this report). “Mouse-over” instructions provide further guidance and sample responses for some of the questions. (To see “mouse-over” text, place the cursor over cells with a red triangle in the upper right corner). At the top of the Excel spreadsheet template, the agencies are requiring the following general information about each operator: operator / company name; dba – doing-business-as (if applicable); FAA certificate designator; reporting period (respondents need to change the dates for each subsequent report); name of assigned FAA principal operations inspector (POI); name of operator’s assigned FAA Flight Standards District Office (FSDO); FSDO phone number; and the applicable National Park units over which the operator is conducting commercial air tours. As noted in the mouse-over guidance for the applicable National Park Service Units entry box, the respondent should click on the worksheet tab “Park Alpha Codes” in bottom left corner of spreadsheet to find the four letter code for the applicable park(s) they are reporting.

On the right hand side of the Excel spreadsheet template there are also two areas for the respondent to enter in the departure airport / helipad from which operations are conducted and to identify route information. You may create any appropriate Route Name you wish if your routes do not already have designators. You will create a route code for each different route you fly over a park that you will then enter into the Code column. The route Code will begin with the appropriate 4-character park unit designator from the list found in “Park Alpha Codes” tab at the bottom of the spreadsheet, followed by a hyphen. After the hyphen, add a short (4 to 6 character) code of your choosing that relates to the designated full route name that you entered in the column “Route Name”. For example, for a route over Lake Mead National Recreation area with the route name “Red Mountain West” you might create the following code: LAKE-RedMTW. Note that in this example your code would have to start with “LAKE-” which is the official 4-character NPS designator for Lake Meade, followed by a hyphen. The characters following the hyphen would define the route name. Again, you may use any route name and designator code you choose. However, the designator code must start with the official 4-character park designator and a hyphen, and you must continue to use that route Code consistently for that particular route.



In the lower left corner of the Excel spreadsheet template, the agencies are requiring the following specific information about each commercial air tour conducted for the reporting period: departure date; departure time; “N” number of aircraft; aircraft make / model / series; departure airport / helipad; and flight route (using the same Routes Flown Code discussed above).

No later than 30 days after the close of each quarter the operator must submit their report concurrently to both the FAA and NPS. Operators will submit the filled out Excel spreadsheet template via email to:

9-AWP-ATMP-Reports@faa.gov

and

NPS\_NRSS\_NRPC\_AirTourPlanning@nps.gov

Or they may be mailed via the U.S. Postal Service directly to:

Special Programs Staff  
Federal Aviation Administration  
P.O. Box 92007  
Los Angeles, California 90009-2007

and

Natural Sounds and Night Skies Division  
National Park Service  
1201 Oakridge Drive, Suite 100  
Fort Collins, CO 80525.

**ANNUAL REPORTING REQUIREMENTS FOR EXEMPT PARKS:** In accordance with statutory amendment, air tour operators conducting commercial air tours at parks that are exempt from NPATMA on the basis of having 50 or fewer annual commercial air tours are to report to both the FAA and NPS the annual number of operations for those parks in order for the agencies to affirm park exemptions each year. If you are flying over any of the parks listed on the attached table you only need to report the total number of commercial air tour flights that you conducted during the prior reporting year for each individual park over which you conducted those operations. For example, if you conducted operations over five of the parks listed in the table, you will submit five operational counts; one for each of the parks over which you conducted air tours during the prior reporting year.

Reports will be made annually, not quarterly. You will begin collecting your first year’s annual flight operations data January 1, 2013. That first reporting period will end at the close of the calendar year December 31, 2013 and your first report will be due no later than January 30, 2014. Operators must send an email reporting the number of annual operations flown over any exempt park(s) for the period January 1 – December 31 to the same email addresses listed above, or that information can be mailed to the FAA Special Programs Staff and the NPS Natural Sounds and Night Skies Division (mailing addresses listed above). Each subsequent year of reportable data collection will begin January 1 of each year, and each resulting subsequent annual report must be submitted to both the FAA and NPS no later than January 30 of the next year.

The FAA and NPS will annually publish a list of exempt parks in the Federal Register and post the list on the FAA and NPS websites listed under above. The list could change from year to year. Parks may be added to the exempt list based on the prior year’s number of annual operations. Parks may also be withdrawn from the exempt list if it

is found, through the reporting or other information, that operators have cumulatively exceeded the 50 annual commercial air tour operation threshold for the given park in a given year. Under the statute, exemptions may also be withdrawn by the NPS if determined necessary to protect park resources or park visitor use and enjoyment. In carrying out this responsibility, the NPS may request additional information from operators at specific parks to assist in determining whether that park should remain on the exempt park list. Parks that lose exempt status will return to IOA requirements until an air tour management plan or a voluntary agreement has been established.

The initial list of exempt parks is based on interim operating authority data available to the FAA and NPS. Additional parks may be added to the exempt list if the agencies find that 50 or fewer operations actually occurred during the preceding year.

### **3.3 Implementation of Reporting Requirements**

In January 2013, the guidance memo was sent from FAA's Air Transportation Division to all regional Flight Standards division managers indicating they needed to notify their appropriate field offices (Flight Standards District Offices) regarding implementation of Title 49 § 40128(d): Commercial Air Tour Reports. This memo was also posted on the FAA's ATMP website. As this was the first year for reporting, there was also a follow on notification after the 1<sup>st</sup> quarter (May) and periodic checks with various Flight Standards District Offices to ensure that word had reached the air tour operators required to report.

## 4.0 Reporting Data for 2013

This section provides information on data collected from the 2013 calendar year reporting. This includes all data submitted by air tour operators through quarterly or annual (for exempt parks) reports. The individual operator reports, the vast majority of which were submitted in the Excel spreadsheet template, were consolidated into one combined spreadsheet.

### 4.1 Park Level Data - 2013

Table 4-1 lists parks, in alphabetical order, where operators reported air tour operations and the number reported in 2013. Of the 80 parks in the list, there were a total of 48 national park units where at least one air tour is reported to have occurred. In terms of air tour activity, 80,558 air tours were reported over these parks in 2013. Appendix A shows a map representing the geographic distribution of parks over which operators reported tours during 2013.

Table 4-2 provides the same information sorted by air tour activity, from park units with the most flights to the least. As can be seen, the bulk of air tour operations were concentrated on a small number of parks where air tours are a popular activity. Approximately 95% of the air tour operations reported nationwide occurred at seven park units (see Figure 4-1). All seven of these parks had over 1,000 reported annual operations, three of them had over 10,000 operations during 2013. The largest parks, in order of activity, were National Parks of New York Harbor (NPNH - which includes Statue of Liberty National Monument and Governor's Island, and other park units), Hawaii Volcanoes National Park (HAVO), and Lake Mead National Recreation Area (LAKE). The other four "high" activity parks were Haleakala National Park (HALE), Glen Canyon National Recreation Area (GLCA), Rainbow Bridge National Monument (RABR), and Golden Gate National Recreation Area (GOGA).

Of the remaining 73 parks, 41 combined for just 4,125 annual operations reported by operators in 2013, and 32 parks reported zero operations. The activity distribution for the remaining parks was: 13 parks with 1 - 10 operations; 17 parks with 11 - 100 operations; and 11 parks with 101 - 1,000 operations. 59 parks reported 50 or fewer annual operations (including those that reported 0 operations), which is the cutoff limit for an exempt park. The current exempt park list has 33 parks; based on the 2013 reporting data, at least another 26 parks would be eligible for the exempt park list, subject to NPS review for potential withdrawal from exemption.

**Table 4-1. Park Operations in 2013<sup>a</sup> (Alphabetical)**

National Park Service Unit	NPS Region <sup>b</sup>	State	2013 / 1Q	2013 / 2Q	2013 / 3Q	2013 / 4Q	Park Total	Notes
Acadia National Park (ACAD)	NER	ME	0	4	6	6	16	
Arches National Park (ARCH)	IMR	UT	3	31	26	55	115	
Aztec Ruins National Monument (AZRU)	IMR	NM	6	13	16	10	45	
Badlands National Park (BADL)	MWR	SD	0	357	605	0	962	
Bandelier National Monument (BAND)	IMR	NM	20	31	66	6	123	
Big Bend National Park (BIBE)	IMR	TX	0	0	0	0	10	c
Big Cypress National Preserve (BICY)	SER	FL	66	17	0	21	104	
Biscayne National Park (BISC)	SER	FL	0	0	0	0	0	
Black Canyon Of The Gunnison National Park (BLCA)	IMR	CO					6	c
Bryce Canyon National Park (BRCA)	IMR	UT	7	115	160	103	385	
Canyon De Chelly National Monument (CACH)	IMR	AZ	7	16	20	17	60	
Canyonlands National Park (CANY)	IMR	UT	15	192	207	76	490	
Cape Hatteras National Seashore (CAHA)	SER	NC	0	61	114	0	175	
Capitol Reef National Park (CARE)	IMR	UT	4	5	7	1	17	
Capulin Volcano National Monument (CAVO)	IMR	NM					13	c
Carlsbad Caverns National Park (CAVE)	IMR	NM	0	0	0	0	0	c
Casa Grande Ruins National Monument (CAGR)	IMR	AZ	1	0	0	0	1	c
Cedar Breaks National Monument (CEBR)	IMR	UT	0	0	0	0	0	

National Park Service Unit	NPS Region <sup>b</sup>	State	2013 / 1Q	2013 / 2Q	2013 / 3Q	2013 / 4Q	Park Total	Notes
Chaco Culture National Historical Park (CHCU)	IMR	NM	8	19	23	18	68	
Colorado National Monument (COLM)	IMR	CO	1	2	3	2	8	
Coronado National Memorial (CORO)	IMR	AZ	0	0	0	0	0	c
Death Valley National Park (DEVA)	PWR	CA	0	0	0	0	0	
Devils Tower National Monument (DETO)	IMR	WY	0	0	0	0	0	c
Dinosaur National Monument (DINO)	IMR	CO,UT					2	c
Dry Tortugas National Park (DRTO)	SER	FL	0	0	0	0	0	
El Malpais National Monument (ELMA)	IMR	NM					15	c
El Morro National Monument (ELMO)	IMR	NM					8	c
Everglades National Park (EVER)	SER	FL	71	17	0	22	110	
Fort Bowie National Historic Site (FOBO)	IMR	AZ	0	0	0	0	0	c
Fort Davis National Historic Site (FODA)	IMR	TX	0	0	0	0	0	c
Fort Union National Monument (FOUN)	IMR	NM					16	c
Gila Cliff Dwellings National Monument (GICL)	IMR	NM					2	c
Glacier National Park (GLAC)	IMR	MT	1	131	136	4	272	
Glen Canyon National Recreation Area (GLCA)	IMR	AZ,UT	326	2279	1383	449	4437	
Golden Gate National Recreation Area (GOGA)	PWR	CA	242	485	719	474	1920	
Golden Spike National Historic Site (GOSP)	IMR	UT	0	0	0	0	0	
Grand Teton National Park (GRTE)	IMR	WY	0	0	0	0	0	
Great Sand Dunes National Park and Preserve (GRSA)	IMR	CO	0	0	0	0	0	c
Great Smoky Mountains National Park (GRSM)	SER	TN,NC	100	191	6	8	305	
Guadalupe Mountains National Park (GUMO)	IMR	TX	0	0	0	0	0	c
Haleakala National Park (HALE)	PWR	HI	1128	1042	1268	1193	4631	
Hawaii Volcanoes National Park (HAVO)	PWR	HI	4055	3812	4320	3223	15410	
Hohokam Pima National Monument (PIMA)	IMR	AZ	0	0	0	0	0	c
Hovenweep National Monument (HOVE)	IMR	UT	3	6	9	3	21	
Hubbell Trading Post National Historic Site (HUTR)	IMR	AZ	0	0	0	0	8	c
Kings Canyon National Park (SEKI)	PWR	CA	0	0	0	0	0	c
Lake Mead National Recreation Area (LAKE)	PWR	AZ,NV	3013	2961	3972	3272	13218	
Mesa Verde National Park (MEVE)	IMR	CO	5	11	14	10	40	
Mojave National Preserve (MOJA)	PWR	CA	0	0	0	0	0	c
Montezuma Castle National Monument (MOCA)	IMR	AZ	0	0	0	0	0	
Mount Rainier National Park (MORA)	PWR	WA	0	0	0	0	0	
Mount Rushmore National Memorial (MORU)	MWR	SD	1	2	6	0	9	
Muir Woods National Monument (MUWO)	PWR	CA	0	132	204	178	514	
National Parks of New York Harbor Management Unit (NPNH)	NER	NY,NJ	5568	9752	10008	9354	34682	
Natural Bridges National Monument (NABR)	IMR	UT	2	25	29	9	65	
Navajo National Monument (NAVA)	IMR	AZ	2	7	12	7	28	
North Cascades National Park (NOCA)	PWR	WA	0	0	0	0	0	
Olympic National Park (OLYM)	PWR	WA	1	10	13	5	29	
Organ Pipe Cactus National Monument (ORPI)	IMR	AZ	0	0	0	0	0	c
Pecos National Historical Park (PECO)	IMR	NM	0	0	0	0	18	c
Petrified Forest National Park (PEFO)	IMR	AZ	0	0	0	0	14	c
Petroglyph National Monument (PETR)	IMR	NM	0	0	0	0	18	c
Pipe Spring National Monument (PISP)	IMR	AZ	0	0	0	0	0	c
Point Reyes National Seashore (PORE)	PWR	CA	0	0	0	11	11	
Rainbow Bridge National Monument (RABR)	IMR	UT	94	1022	840	179	2135	
Rio Grande Wild and Scenic River National Wild And Scenic River (RIGR)	IMR	TX	0	0	0	0	0	c
Saguaro National Park (SAGU)	IMR	AZ	0	0	0	0	0	c
Salinas Pueblo Missions National Monument (SAPU)	IMR	NM	0	0	0	0	0	c
San Francisco Maritime National Historical Park (SAFR)	PWR	CA	0	0	0	0	0	
San Juan Island National Historical Park (SAJH)	PWR	WA	0	0	0	0	0	c
Sequoia National Park (SEKI)	PWR	CA	0	0	0	0	0	c
Sunset Crater Volcano National Monument (SUCR)	IMR	AZ	1	0	1	1	3	
Timpanogos Cave National Monument (TICA)	IMR	UT	0	0	0	0	0	
Tumacacori National Historical Park (TUMA)	IMR	AZ	0	0	0	0	0	c
Tuzigoot National Monument (TUZI)	IMR	AZ	0	0	0	0	0	

National Park Service Unit	NPS Region <sup>b</sup>	State	2013 / 1Q	2013 / 2Q	2013 / 3Q	2013 / 4Q	Park Total	Notes
Walnut Canyon National Monument (WACA)	IMR	AZ	0	0	0	0	0	c
Wupatki National Monument (WUPA)	IMR	AZ					7	c
Yellowstone National Park (YELL)	IMR	ID,MT,WY	0	0	5	1	6	
Yosemite National Park (YOSE)	PWR	CA	0	0	0	0	0	
Zion National Park (ZION)	IMR	UT	4	0	2	0	6	
<b>Total</b>			<b>14,755</b>	<b>22,748</b>	<b>24,200</b>	<b>18,718</b>	<b>80,558</b>	<b>d</b>

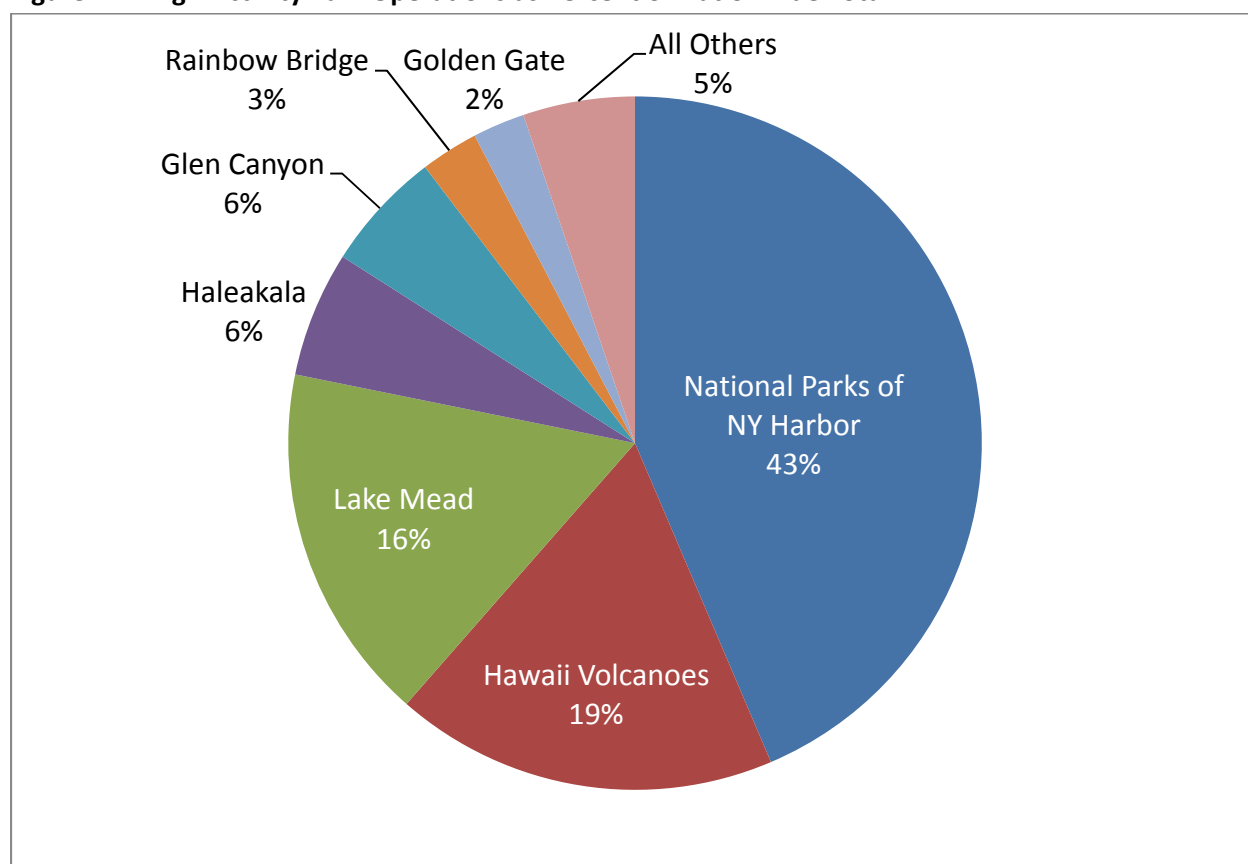
a. Data are subject to change pending receipt of additional reports.

b. IMR = Intermountain Region, MWR = Midwest Region, NER = Northeast Region, PWR = Pacific West Region, SER = Southeast Region.

c. Initially listed as an exempt park per IOA (50 or fewer annual operations), so operators only required to report total annual flights; thus there may not be quarterly data in the table.

d. Value in "Park Total" exceeds sum of quarterly flights due to operators who were only required to submit annual reports.

**Figure 4-1. High-Activity Park Operations as Percent of Nationwide Total**



**Table 4-2. Park Operations in 2013a (Highest to Lowest Level of Operations)**

National Park Service Unit	NPS Region <sup>b</sup>	State	2013 / 1Q	2013 / 2Q	2013 / 3Q	2013 / 4Q	Park Total	Notes
National Parks of New York Harbor Management Unit (NPNH)	NER	NY,NJ	5568	9752	10008	9354	34682	
Hawaii Volcanoes National Park (HAVO)	PWR	HI	4055	3812	4320	3223	15410	
Lake Mead National Recreation Area (LAKE)	PWR	AZ,NV	3013	2961	3972	3272	13218	
Haleakala National Park (HALE)	PWR	HI	1128	1042	1268	1193	4631	
Glen Canyon National Recreation Area (GLCA)	IMR	AZ,UT	326	2279	1383	449	4437	
Rainbow Bridge National Monument (RABR)	IMR	UT	94	1022	840	179	2135	
Golden Gate National Recreation Area (GOGA)	PWR	CA	242	485	719	474	1920	
Badlands National Park (BADL)	MWR	SD	0	357	605	0	962	
Muir Woods National Monument (MUWO)	PWR	CA	0	132	204	178	514	
Canyonlands National Park (CANY)	IMR	UT	15	192	207	76	490	
Bryce Canyon National Park (BRCA)	IMR	UT	7	115	160	103	385	
Great Smoky Mountains National Park (GRSM)	SER	TN,NC	100	191	6	8	305	
Glacier National Park (GLAC)	IMR	MT	1	131	136	4	272	
Cape Hatteras National Seashore (CAHA)	SER	NC	0	61	114	0	175	
Bandelier National Monument (BAND)	IMR	NM	20	31	66	6	123	
Arches National Park (ARCH)	IMR	UT	3	31	26	55	115	
Everglades National Park (EVER)	SER	FL	71	17	0	22	110	
Big Cypress National Preserve (BICY)	SER	FL	66	17	0	21	104	
Chaco Culture National Historical Park (CHCU)	IMR	NM	8	19	23	18	68	
Natural Bridges National Monument (NABR)	IMR	UT	2	25	29	9	65	
Canyon De Chelly National Monument (CACH)	IMR	AZ	7	16	20	17	60	
Aztec Ruins National Monument (AZRU)	IMR	NM	6	13	16	10	45	
Mesa Verde National Park (MEVE)	IMR	CO	5	11	14	10	40	
Olympic National Park (OLYM)	PWR	WA	1	10	13	5	29	
Navajo National Monument (NAVA)	IMR	AZ	2	7	12	7	28	
Hovenweep National Monument (HOVE)	IMR	UT	3	6	9	3	21	
Pecos National Historical Park (PECO)	IMR	NM	0	0	0	0	18	c
Petroglyph National Monument (PETR)	IMR	NM	0	0	0	0	18	c
Capitol Reef National Park (CARE)	IMR	UT	4	5	7	1	17	
Acadia National Park (ACAD)	NER	ME	0	4	6	6	16	
Fort Union National Monument (FOUN)	IMR	NM					16	c
El Malpais National Monument (ELMA)	IMR	NM					15	c
Petrified Forest National Park (PEFO)	IMR	AZ	0	0	0	0	14	c
Capulin Volcano National Monument (CAVO)	IMR	NM					13	c
Point Reyes National Seashore (PORE)	PWR	CA	0	0	0	11	11	
Big Bend National Park (BIBE)	IMR	TX	0	0	0	0	10	c
Mount Rushmore National Memorial (MORU)	MWR	SD	1	2	6	0	9	
Colorado National Monument (COLM)	IMR	CO	1	2	3	2	8	
El Morro National Monument (ELMO)	IMR	NM					8	c
Hubbell Trading Post National Historic Site (HUTR)	IMR	AZ	0	0	0	0	8	c
Wupatki National Monument (WUPA)	IMR	AZ					7	c
Black Canyon Of The Gunnison National Park (BLCA)	IMR	CO					6	c
Yellowstone National Park (YELL)	IMR	ID,MT, WY	0	0	5	1	6	
Zion National Park (ZION)	IMR	UT	4	0	2	0	6	
Sunset Crater Volcano National Monument (SUCR)	IMR	AZ	1	0	1	1	3	
Dinosaur National Monument (DINO)	IMR	CO,UT					2	c
Gila Cliff Dwellings National Monument (GICL)	IMR	NM					2	c
Casa Grande Ruins National Monument (CAGR)	IMR	AZ	1	0	0	0	1	c
Biscayne National Park (BISC)	SER	FL	0	0	0	0	0	
Carlsbad Caverns National Park (CAVE)	IMR	NM	0	0	0	0	0	c
Cedar Breaks National Monument (CEBR)	IMR	UT	0	0	0	0	0	
Coronado National Memorial (CORO)	IMR	AZ	0	0	0	0	0	c
Death Valley National Park (DEVA)	PWR	CA	0	0	0	0	0	
Devils Tower National Monument (DETO)	IMR	WY	0	0	0	0	0	c
Dry Tortugas National Park (DRTG)	SER	FL	0	0	0	0	0	
Fort Bowie National Historic Site (FOBO)	IMR	AZ	0	0	0	0	0	c
Fort Davis National Historic Site (FODA)	IMR	TX	0	0	0	0	0	c

National Park Service Unit	NPS Region <sup>b</sup>	State	2013 / 1Q	2013 / 2Q	2013 / 3Q	2013 / 4Q	Park Total	Notes
Golden Spike National Historic Site (GOSP)	IMR	UT	0	0	0	0	0	
Grand Teton National Park (GRTE)	IMR	WY	0	0	0	0	0	
Great Sand Dunes National Park and Preserve (GRSA)	IMR	CO	0	0	0	0	0	c
Guadalupe Mountains National Park (GUMO)	IMR	TX	0	0	0	0	0	c
Hohokam Pima National Monument (PIMA)	IMR	AZ	0	0	0	0	0	c
Kings Canyon National Park (SEKI)	PWR	CA	0	0	0	0	0	c
Mojave National Preserve (MOJA)	PWR	CA	0	0	0	0	0	c
Montezuma Castle National Monument (MOCA)	IMR	AZ	0	0	0	0	0	
Mount Rainier National Park (MORA)	PWR	WA	0	0	0	0	0	
North Cascades National Park (NOCA)	PWR	WA	0	0	0	0	0	
Organ Pipe Cactus National Monument (ORPI)	IMR	AZ	0	0	0	0	0	c
Pipe Spring National Monument (PISP)	IMR	AZ	0	0	0	0	0	c
Rio Grande Wild and Scenic River National Wild And Scenic River (RIGR)	IMR	TX	0	0	0	0	0	c
Saguaro National Park (SAGU)	IMR	AZ	0	0	0	0	0	c
Salinas Pueblo Missions National Monument (SAPU)	IMR	NM	0	0	0	0	0	c
San Francisco Maritime National Historical Park (SAFR)	PWR	CA	0	0	0	0	0	
San Juan Island National Historical Park (SAJH)	PWR	WA	0	0	0	0	0	c
Sequoia National Park (SEKI)	PWR	CA	0	0	0	0	0	c
Timpanogos Cave National Monument (TICA)	IMR	UT	0	0	0	0	0	
Tumacacori National Historical Park (TUMA)	IMR	AZ	0	0	0	0	0	c
Tuzigoot National Monument (TUZI)	IMR	AZ	0	0	0	0	0	
Walnut Canyon National Monument (WACA)	IMR	AZ	0	0	0	0	0	c
Yosemite National Park (YOSE)	PWR	CA	0	0	0	0	0	
<b>Total</b>			<b>14,755</b>	<b>22,748</b>	<b>24,200</b>	<b>18,718</b>	<b>80,558</b>	<b>d</b>

a. Data are subject to change pending receipt of additional reports.

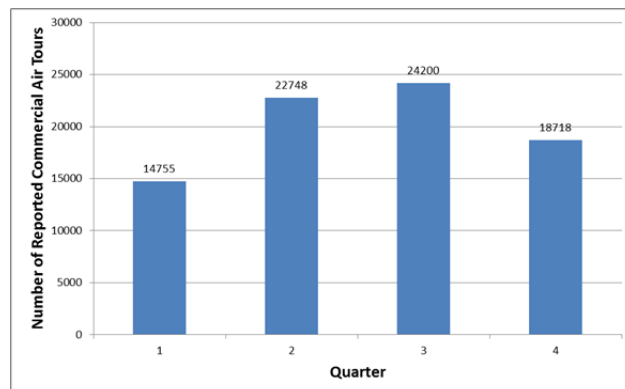
b. IMR = Intermountain Region, MWR = Midwest Region, NER = Northeast Region, PWR = Pacific West Region, SER = Southeast Region.

c. Initially listed as an exempt park per IOA (50 or fewer annual operations), so operators only required to report total annual flights; thus there may not be quarterly data in the table.

d. Value in "Park Total" exceeds sum of quarterly flights due to operators who were only required to submit annual reports.

Figure 4-2 shows the 2013 reporting data broken down by quarter. As one would expect the activity levels are higher during the warmer spring / summer seasons (2<sup>nd</sup> and 3<sup>rd</sup> quarters which run from April to June and July to September, respectively). The seasonality of the data, however, is maybe not as pronounced as one would expect. The percentage of operations conducted by quarter were: 1<sup>st</sup> – 18%; 2<sup>nd</sup> – 28%; 3<sup>rd</sup> – 30%; and 4<sup>th</sup> – 23%. The reason for this is that a lot of the larger activity parks were relatively busy year round.

**Figure 4-2. Quarterly Activity in 2013**



Demand for air tours at the higher activity parks such as National Parks of New York Harbor, Haleakala and Hawaii Volcanoes, Lake Mead, and Golden Gate does not drastically decline during the 1<sup>st</sup> and 4<sup>th</sup> quarters of the calendar year, most likely due to year round demand and / or good weather. Only Glen Canyon and Rainbow Bridge, among the higher activity parks, and lower activity parks like Cape Hatteras, Canyonlands, and Glacier had more pronounced seasonal activity (2<sup>nd</sup> and 3<sup>rd</sup> quarter focused), probably due to inclement weather / reduced demand.

Note that Tables 4-1 and 4-2 also display the NPS region in which each park unit is located. Table 4-3 displays the level of activity by NPS region, including percentage of total, and number of parks in each region for which at least one air tour was reported. While the Northeast Region and the Pacific West Region represent the greatest level of air tour activity, these operations are concentrated over only a few parks. In contrast, there is less activity in the Intermountain Region, but there are significantly more parks over which air tours occur. Appendix B provides a map of NPS regions.

**Table 4-3. Air Tour Activity by NPS Region**

NPS Region <sup>a</sup>	Air Tours	Percent of Total	No. of Parks
NER	34,698	43%	2
PWR	35,733	44%	7
IMR	8,462	11%	33
MWR	971	1%	2
SER	694	1%	4
Total	80,558		48

a. IMR = Intermountain Region, MWR = Midwest Region, NER = Northeast Region, PWR = Pacific West Region, SER = Southeast Region.

There was a large spread in the number of air tour operators who give tours at any given park unit. Based on the 2013 reporting information, the number of operators reporting at least one tour at a park unit ranged from one to seven. Table 4-4 provides data on the number of operators at the 48 parks that had tours in 2013 based on the reporting data.

**Table 4-4. Number of Operators by Park**

No. of Operators	Parks	Percentage
1	32	67%
2	4	8%
3	6	13%
4	1	2%
5	4	8%
7	1	2%

As can be seen, parks with only one operator reporting tours during 2013 were by far the most common. There were 32 parks with only one operator, or about 67% of the total 48 parks. In general, most of the parks with one operator were lower activity parks. All of the higher activity parks had multiple operators:

- National Parks of New York Harbor 3
- Hawaii Volcanoes 5
- Lake Mead 5
- Haleakala 4
- Glen Canyon 7
- Rainbow Bridge 3
- Golden Gate 2

Table 4-5 presents the various types of aircraft that were reported to have conducted operations over national park units in 2013. The various makes and models of both helicopter and fixed wing aircraft are listed. Helicopter



companies included models from Aerospatiale, Bell, Eurocopter, MDHI, and Robinson. Fixed wing companies included models from Cessna, De Havilland, Kodiak, and Maule.

**Table 4-5. Aircraft Type**

<b>HELICOPTERS</b>	<b>FIXED WING</b>
<b>AEROSPATIALE</b>	<b>CESSNA</b>
AS 350 BA	Cessna 172
AS 350 FX	Cessna 172L
AS-350	Cessna 182
AS-350 B3e	Cessna 182R
AS-350 FX	Cessna 206
AS-350-B2	Cessna 206E
AS-350-BA	Cessna 206F
AS-355	Cessna 206G
<b>BELL HELICOPTERS</b>	Cessna 207
BHT-206	Cessna 207A
BHT-206 B3	Cessna 210
BHT-206 BL3	Cessna 208
BHT-206 L1	Cessna T-207A
BHT-206 L3	Cessna 208B
BHT-207 L3	Cessna TU-206F
BHT-406 B3	<b>DE HAVILLAND</b>
BHT-406 L3	DHC-2
BHT-406N L3	DHC-6-300
BHT-407	<b>KODIAK</b>
<b>EUROCOPTER</b>	Kodiak
EC-130	Kodiak 100
EC-130-B4	Quest Kodiak 100
EC-130-T2	<b>MAULE</b>
<b>MD HELICOPTERS</b>	Maule M6
MDHI-369-D	
MDHI-369-E	
<b>ROBINSON HELICOPTERS</b>	
Robinson R-44	

## 5.0 Exempt Park List

As noted earlier, the new amendment provision, Section 49 U.S.C §40128(a)(5), exempted national parks with 50 or fewer flights each year from the provisions of NPATMA. If the NPS determines that an ATMP or voluntary agreement is necessary to protect park resources and values or park visitor use and enjoyment, they can withdraw the exemption. The provision required that the agencies publish an annual list of the parks that are covered by this exemption. The new provision required commercial air tour operators who conduct tours over exempt parks to report to provide the agencies with a report each year on the number of operations they conducted during the preceding year.

On December 19, 2012, the agencies published the first “exempt park list” in the Federal Register (see 77 FR 75254). Appendix C provides the 2012 exempt park list, as published in the Federal Register. As of that date, the new reporting requirements had not been initiated yet so no actual data were available to determine whether actual flights at any park unit were 50 or less annually. Therefore, the initial list was based on the IOA operational numbers only, since that was the only data available to the FAA and NPS on the number of air tour operations at parks. The agencies identified those parks where the combined (amongst all operators) IOA was 50 fewer. A total of 33 parks were identified as having a combined IOA of 50 or fewer and NPS did not withdraw the exemption for any of these parks.

All of the parks are located in western states. Table 5-1 lists the states with exempt parks:

**Table 5-1. Exempt Park States**

State	No. Exempt Parks
Arizona	12
California	3
Colorado	2
Colorado / Utah	1
New Mexico	9
Texas	4
Washington	1
Wyoming	1

As the reporting submittal period and data analysis for calendar year 2013 was still underway in early 2013, the exempt park list published on March 14, 2014 (79 FR 14569-14570)( Appendix D) was the same as the December 2012 list. Table 5-2 presents the 33 parks on the current exempt park list.

Based on a review of the 2013 reporting data, it appears that additional parks may be exempt as actual operations (not just those allowed under IOA) at these park units is 50 or fewer. The FAA and NPS have not finalized this list yet (and whether NPS would withdraw any potential exempt parks) for publication in the Federal Register. The agencies likely will finalize the list and publish a new exempt park list in the summer of 2014

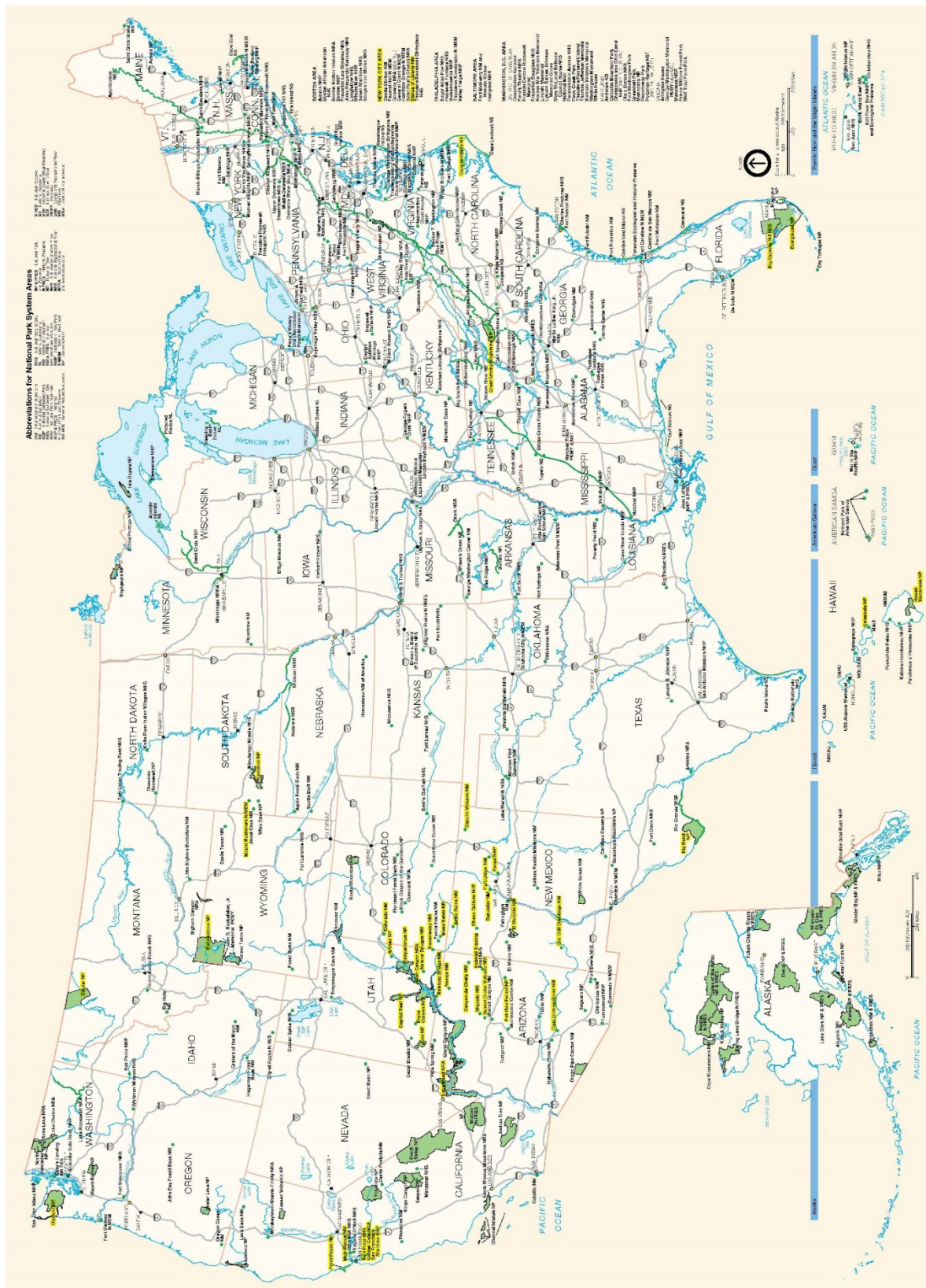
**Table 5-2. National Park Units with 50 or Fewer Interim Operating Authority (IOA)**

Big Bend National Park, TX
Black Canyon of the Gunnison National Park, CO
Capulin Volcano National Monument, NM
Carlsbad Caverns National Park, NM
Casa Grande Ruins National Monument, AZ
Coronado National Memorial, AZ
Devils Tower National Monument, WY
Dinosaur National Monument, UT/CO
El Malpais National Monument, NM
El Morro National Monument, NM
Fort Bowie National Historic Site, AZ
Fort Davis National Historic Site, TX
Fort Union National Monument, NM
Gila Cliff Dwellings National Monument, NM
Great Sand Dunes National Park and Preserve, CO
Guadalupe Mountains National Park, NM
Hohokam Pima National Monument, AZ
Hubbell Trading Post National Historic Site, AZ
Kings Canyon National Park, CA
Mojave National Preserve, CA
Organ Pipe Cactus National Monument, AZ
Pecos National Historical Park, NM
Petrified Forest National Park, AZ
Petroglyph National Monument, NM
Pipe Spring National Monument, AZ
Rio Grande Wild and Scenic River, TX
Saguaro National Park, AZ
Salinas Pueblo Missions National Monument, NM
San Juan Island National Historical Park, WA
Sequoia National Park, CA
Tumacacori National Historic Park, AZ
Walnut Canyon National Monument, AZ
Wupatki National Monument, AZ

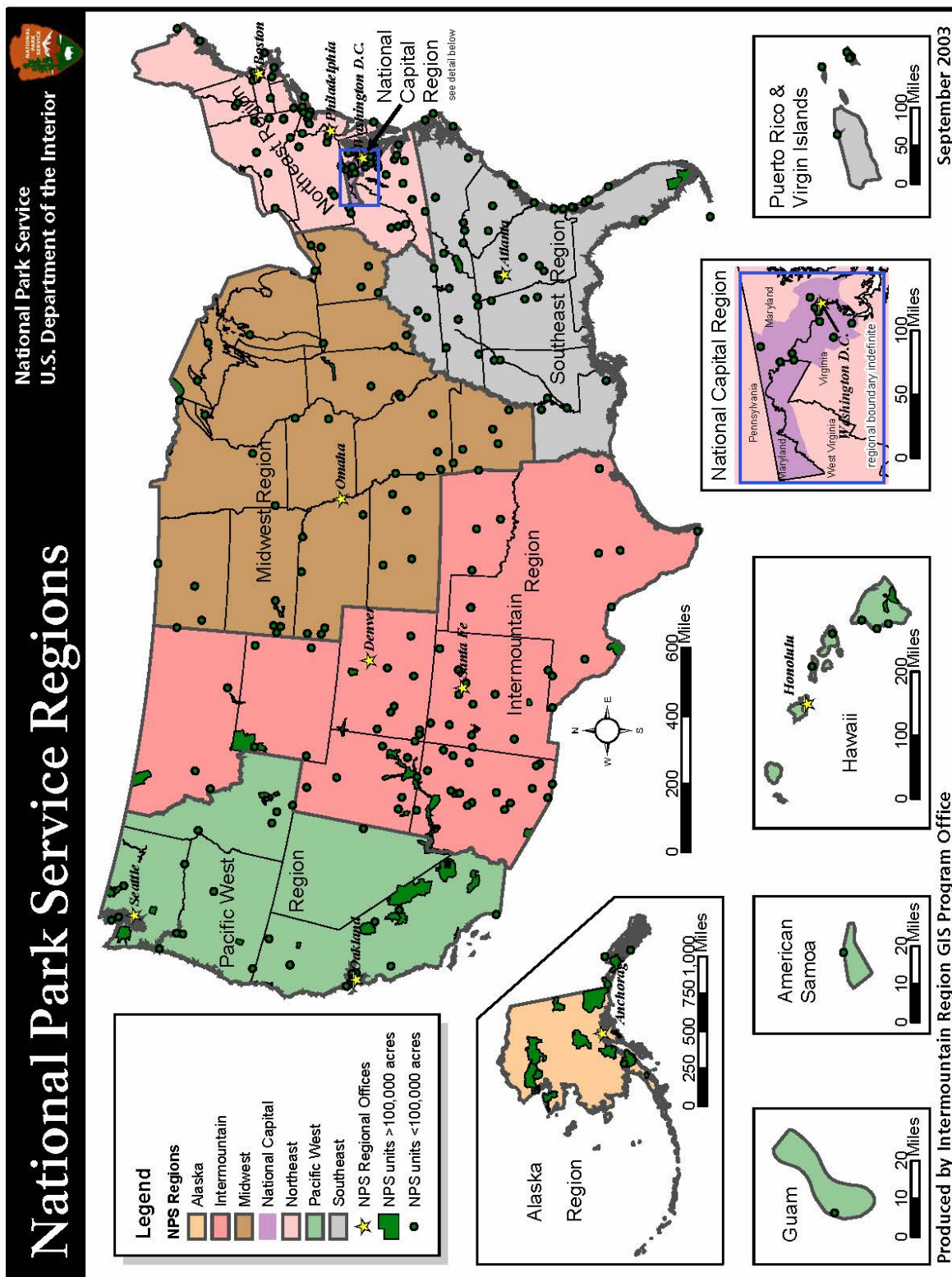
## **Appendices**



## Appendix B. Maps of Units of the National Park System and NPS Regions







## Appendix C. Exempt Parks List, December 19, 2012 (77 FR 75254)



75254

Federal Register / Vol. 77, No. 244 / Wednesday, December 19, 2012 / Notices

**FOR FURTHER INFORMATION CONTACT:** For further information, including a list of the exhibit objects, contact Paul W. Manning, Attorney-Adviser, Office of the Legal Adviser, U.S. Department of State (telephone: 202-632-6469). The mailing address is U.S. Department of State, SA-5, L/PD, Fifth Floor (Suite 5H03), Washington, DC 20522-0505.

Dated: December 10, 2012.

**J. Adam Erelli,**

*Principal Deputy Assistant Secretary, Bureau of Educational and Cultural Affairs, Department of State.*

[FR Doc. 2012-30541 Filed 12-18-12; 8:45 am]

**BILLING CODE 4710-05-P**

## DEPARTMENT OF TRANSPORTATION

### Federal Aviation Administration

## DEPARTMENT OF THE INTERIOR

### National Park Service

#### List of Units of the National Park System Exempt From the Provisions of the National Parks Air Tour Management Act

**AGENCIES:** Federal Aviation Administration, Transportation; National Park Service, Interior.

**ACTION:** List of Exempt Parks.

**SUMMARY:** The National Parks Air Tour Management Act (NPATMA) requires the Federal Aviation Administration (FAA) and National Park Service (NPS) to develop an air tour management plan for units of the national park system where an operator has requested authority to provide commercial air tours. The FAA Modernization and Reform Act of 2012 amended various provisions of NPATMA. One provision exempted national park units with 50 or fewer annual flights from the provisions of NPATMA and requires FAA and NPS to jointly publish a list of exempt parks. This notice includes an initial list of parks that are exempt from the provisions of the NPATMA.

**FOR FURTHER INFORMATION CONTACT:** Barry Brayer—Mailing address: Federal Aviation Administration, P.O. Box 92007, Los Angeles, California 90009-2007. Telephone: (310) 725-3800. Email address: [Barry.Brayer@faa.gov](mailto:Barry.Brayer@faa.gov). Vicki McCusker—Mailing address: Natural Sounds and Night Skies Division, National Park Service, 1201 Oakridge Drive, Suite 100-31, Fort Collins, CO 80525. Telephone: (970) 267-2117. Email address: [Vicki\\_McCusker@nps.gov](mailto:Vicki_McCusker@nps.gov).

**SUPPLEMENTARY INFORMATION:**

#### I. Authority for New Requirements

1. NPATMA (Pub. L. 106-181, codified at 49 U.S.C. 40128) requires the FAA and NPS to develop an air tour management plan for units of the national park system where an operator has requested authority to provide commercial air tours. The FAA Modernization and Reform Act of 2012 (2012 Act) amended various provisions of NPATMA.

2. This Federal Register Notice addresses the following 2012 Act amendment provisions:

- Exempt national park units that have 50 or fewer commercial air tour operations each year from the requirements of NPATMA.
- Authorize NPS to withdraw the exemption if necessary to protect resources and values or visitor use and enjoyment.
- Require FAA and NPS to publish a list each year of national parks covered by the exemption.

#### II. Initial List of Exempt Parks

1. This list is based on interim operating authority (IOA) data available to FAA and NPS. At these parks, the current combined IOA of all air tour operators is 50 operations or less annually. Exempt parks are as follows:

Big Bend National Park, TX  
Black Canyon of the Gunnison National Park, CO  
Capulin Volcano National Monument, NM  
Carlsbad Caverns National Park, NM  
Casa Grande Ruins National Monument, AZ  
Coronado National Memorial, AZ  
Devils Tower National Monument, WY  
Dinosaur National Monument, UT/CO  
El Malpais National Monument, NM  
El Morro National Monument, NM  
Fort Bowie National Historic Site, AZ  
Fort Davis National Historic Site, TX  
Fort Union National Monument, NM  
Gila Cliff Dwellings National Monument, NM  
Great Sand Dunes National Park and Preserve, CO  
Guadalupe Mountains National Park, NM  
Hohokam Pima National Monument, AZ  
Hubbell Trading Post National Historic Site, AZ  
Kings Canyon National Park, CA  
Mojave National Preserve, CA  
Organ Pipe Cactus National Monument, AZ  
Pecos National Historical Park, NM  
Petrified Forest National Park, AZ  
Petroglyph National Monument, NM  
Pipe Spring National Monument, AZ  
Rio Grande Wild and Scenic River, TX  
Saguaro National Park, AZ  
Salinas Pueblo Missions National Monument, NM  
San Juan Island National Historical Park, WA  
Sequoia National Park, CA  
Tumacacori National Historic Park, AZ  
Walnut Canyon National Monument, AZ  
Wupatki National Monument, AZ

2. The list of exempt parks published in this notice is based on IOA

operational numbers only, since this is the only data currently available to FAA and NPS on the number of air tour operations at parks. NPS is authorized to withdraw a park from the exempt list if NPS determines that an air tour management plan or a voluntary agreement is necessary to protect park resources and values or park visitor use and enjoyment. Pursuant to the 2012 Act, the NPS shall inform the FAA in writing of each determination to withdraw an exemption.

#### III. List of Exempt Parks for Future Years

The FAA and NPS will publish a list of exempt parks annually. The list could change from year to year since parks may be added to or removed from the exempt list based on the previous year's number of annual operations or if NPS withdraws an exempted park. In order to continue to be exempt, a park must have 50 or fewer annual commercial air tour operations in any given calendar year. At parks that lose exempt status, operators will return to IOA requirements until an air tour management plan or a voluntary agreement has been established.

Issued in Hawthorne, CA, on November 1, 2012.

**William C. Withycombe,**

*Regional Administrator, Western-Pacific Region, Federal Aviation Administration.*

Issued in Washington, DC, on November 8, 2012.

**Herbert C. Frost,**

*Associate Director, Natural Resource Stewardship and Science, National Park Service.*

[FR Doc. 2012-30561 Filed 12-18-12; 8:45 am]

**BILLING CODE 4910-13-P**

## DEPARTMENT OF TRANSPORTATION

### Federal Highway Administration

#### Notice of Final Federal Agency Action on Proposed Transportation Project in Illinois

**AGENCY:** Federal Highway Administration (FHWA), DOT.

**ACTION:** Notice of limitation on claims for judicial review of actions by FHWA and other Federal agencies.

**SUMMARY:** This notice announces actions taken by the FHWA and other Federal agencies that are final within the meaning of 23 U.S.C. 139(l)(1). The actions relate to a proposed highway and transit project within the Tier 2 Elgin O'Hare—West Bypass project corridor, which is located along the Elgin-O'Hare Expressway/Thorndale



## Appendix D. Exempt Parks List, March 14, 2014 (79 FR 14569)



Federal Register / Vol. 79, No. 50 / Friday, March 14, 2014 / Notices

14569

## DEPARTMENT OF TRANSPORTATION

## Office of the Secretary

**Notice of Applications for Certificates of Public Convenience and Necessity and Foreign Air Carrier Permits Filed Under Subpart B (Formerly Subpart Q) During the Week Ending February 15, 2014**

The following Applications for Certificates of Public Convenience and Necessity and Foreign Air Carrier Permits were filed under Subpart B (formerly Subpart Q) of the Department of Transportation's Procedural Regulations (See 14 CFR 301.201 et. seq.). The due date for Answers, Conforming Applications, or Motions to Modify Scope are set forth below for each application. Following the Answer period DOT may process the application by expedited procedures. Such procedures may consist of the adoption of a show-cause order, a tentative order, or in appropriate cases a final order without further proceedings.

*Docket Number:* DOT-OST-2014-0019.

*Date Filed:* February 10, 2014.

*Due Date for Answers, Conforming Applications, or Motion to Modify Scope:* March 3, 2014.

*Description:* Application of Azerbaijan Airlines requesting a foreign air carrier permit and exemption authority to engage in (1) scheduled air transportation of passengers, property and mail between any point or points in Azerbaijan, via intermediate points, and any point or points in the United States; and (2) charter air transportation of passengers, property and mail between any point or points in Azerbaijan and any point or points in the United States, as well as any point or points in the United States and any point or points in a third country or countries subject to pertinent national, bilateral and international rules and regulations.

*Docket Number:* DOT-OST-2014-0020.

*Date Filed:* February 10, 2014.

*Due Date for Answers, Conforming Applications, or Motion to Modify Scope:* March 3, 2014.

*Description:* Application of Gem Air LLC requesting authority to operate scheduled passenger service as a commuter air carrier between Salmon, ID and Boise, ID.

*Docket Number:* DOT-OST-2014-0021.

*Date Filed:* February 12, 2014.

*Due Date for Answers, Conforming Applications, or Motion to Modify Scope:* March 5, 2014.

*Description:* Application of North Cariboo Flying Service Ltd. requesting an amended foreign air carrier permit and an exemption to engage in on-demand large aircraft charter transportation of passengers and property between points(s) in Canada and point(s) in the United States, as well as other charters.

**Barbara J. Hairston,**  
Supervisory Dockets Officer, Docket Operations, Federal Register Liaison.  
[FR Doc. 2014-05618 Filed 3-13-14; 8:45 am]  
BILLING CODE 4910-9X-P

## DEPARTMENT OF TRANSPORTATION

## Federal Aviation Administration

## DEPARTMENT OF INTERIOR

## National Park Service

**List of Units of the National Park System Exempt From the Provisions of the National Parks Air Tour Management Act**

**AGENCY:** Federal Aviation Administration, Transportation; National Park Service, Interior.

**ACTION:** List of Exempt Parks.

**SUMMARY:** The National Parks Air Tour Management Act (NPATMA) requires the Federal Aviation Administration (FAA) and National Park Service (NPS) to develop an air tour management plan for units of the national park system where an operator has requested authority to provide commercial air tours. The FAA Modernization and Reform Act of 2012 amended various provisions of NPATMA. One provision exempted national park units with 50 or fewer annual flights from the provisions of NPATMA and requires FAA and NPS to jointly publish a list of exempt parks. By Federal Register notice (See 77 FR 75254, December 19, 2012), FAA and NPS published an initial list of exempt parks in 2012. This notice provides the annual updated list of parks that are exempt from the provisions of the NPATMA.

**FOR FURTHER INFORMATION CONTACT:**

Keith Lusk—Mailing address: Federal Aviation Administration, P.O. Box 92007, Los Angeles, California 90009-2007. Telephone: (310) 725-3808. Email address: [Keith.Lusk@faa.gov](mailto:Keith.Lusk@faa.gov). Vicki Ward—Mailing address: Natural Sounds and Night Skies Division, National Park Service, 1201 Oakridge Drive, Suite 100-31, Fort Collins, CO 80525. Telephone: (970) 267-2117. Email address: [Vicki\\_Ward@nps.gov](mailto:Vicki_Ward@nps.gov).

## SUPPLEMENTARY INFORMATION:

## I. Authority

1. NPATMA (Pub. L. 106-181, codified at 49 U.S.C. 40128) requires the FAA and NPS to develop an air tour management plan for units of the national park system where an operator has requested authority to provide commercial air tours. The FAA Modernization and Reform Act of 2012 (2012 Act) amended various provisions of NPATMA.

2. This Federal Register Notice addresses the following 2012 Act amendment provisions (which are codified at 49 U.S.C. 40128(a)(5)):

- a. Exempt national park units that have 50 or fewer commercial air tour operations each year from the requirements of NPATMA.
- b. Authorize NPS to withdraw the exemption if necessary to protect resources and values or visitor use and enjoyment.
- c. Require FAA and NPS to publish a list each year of national parks covered by the exemption.

## II. List of Exempt Parks

1. This list is based on interim operating authority (IOA) data available to FAA and NPS. At these parks, the current combined IOA of all air tour operators is 50 operations or fewer annually. Exempt parks are as follows:

Big Bend National Park, TX  
Black Canyon of the Gunnison National Park, CO  
Capulin Volcano National Monument, NM  
Carlsbad Caverns National Park, NM  
Casa Grande Ruins National Monument, AZ  
Coronado National Memorial, AZ  
Devils Tower National Monument, WY  
Dinosaur National Monument, UT/CO  
El Malpais National Monument, NM  
El Morro National Monument, NM  
Fort Bowie National Historic Site, AZ  
Fort Davis National Historic Site, TX  
Fort Union National Monument, NM  
Gila Cliff Dwellings National Monument, NM  
Great Sand Dunes National Park and Preserve, CO  
Guadalupe Mountains National Park, NM  
Hohokam Pima National Monument, AZ  
Hubbell Trading Post National Historic Site, AZ  
Kings Canyon National Park, CA  
Mojave National Preserve, CA  
Organ Pipe Cactus National Monument, AZ  
Pecos National Historical Park, NM  
Petrified Forest National Park, AZ  
Petroglyph National Monument, NM  
Pipe Spring National Monument, AZ