



Reporting Information for Commercial Air Tour Operations over National Park Units

2014 ANNUAL REPORT

March 29, 2017

Table of Contents

Background..... 3

Table 1. Reported Commercial Air Tours in 2014 (Highest to Lowest Number of Operations)..... 4

Table 2. Reported Commercial Air Tours in 2014 (Alphabetical by Park)..... 6

Table 3. Reported Commercial Air Tours in 2014 (High-Activity Parks)..... 8

Table 4. Reported Commercial Air Tours in 2014 (by Region)..... 9

Table 5. Reported Commercial Air Tours in 2013 and 2014 (by Quarter)..... 10

Table 6. Operators Conducting Tours in 2014..... 10

Background

The Federal Aviation Administration (FAA) Modernization and Reform Act of 2012 contained a new amendment provision to the National Parks Air Tour Management Act (NPATMA) of 2000. The amendment provision required commercial air tour operators conducting air tours over national park units to begin reporting their activity to the FAA and the National Park Service (NPS) starting in calendar year 2013.

This 2014 annual report provides a high level overview of some of the reporting data that the agencies received from the calendar year 2014 reports submitted by commercial air tour operators. Since some of the reporting information may be business sensitive, no operator-specific data is disclosed.

With the submission of the 2014 reports, the agencies now have recent data about the extent of commercial air tour operations over national park units, including temporal information (date and time of day), aircraft type, and number of operations. This information will assist the agencies in implementing other requirements of NPATMA, including prioritizing efforts to develop voluntary agreements at national park units where appropriate.

This 2014 annual report is an abridged version of the 2013 report in that it includes the air tour data, but does not include information on the legislative history, regulatory requirements, development of reporting requirements, or implementation of reporting requirements. For this background, as well as the 2013 data, refer to the 2013 annual report available at:

http://www.faa.gov/about/office_org/headquarters_offices/arc/programs/air_tour_management_plan/documents/FAA-NPS-2013-Report.pdf

About this version

This March 2017 version of the 2014 Annual Report incorporates a revised operator report submitted in October 2016 for third quarter 2014 activity at Hawaii Volcanoes National Park.

Table 1. Reported Commercial Air Tours in 2014^a (Highest to Lowest Number of Operations)

National Park Service Unit	Region ^b	State	Reported Commercial Air Tours ^c					Total ^d
			Jan-Mar	Apr-Jun	Jul-Sep	Oct-Dec		
National Parks of New York Harbor Management Unit (NPNH)	NER	NY,NJ	4,866	11,905	12,056	10,970	39,797	
Hawaii Volcanoes National Park (HAVO)	PWR	HI	3,342	3,415	4,053	3,617	14,427	
Lake Mead National Recreation Area (LAKE)	PWR	AZ,NV	3,045	2,753	3,768	2,594	12,160	
Haleakala National Park (HALE)	PWR	HI	1,187	1,289	1,341	1,115	4,932	
Glen Canyon National Recreation Area (GLCA)	IMR	AZ,UT	189	2,134	1,682	856	4,861	
Mount Rushmore National Memorial (MORU)	MWR	SD	4	945	2,617	82	3,648	
Rainbow Bridge National Monument (RABR)	IMR	UT	112	752	1,118	417	2,399	
Golden Gate National Recreation Area (GOGA)	PWR	CA	338	575	709	381	2,003	
Badlands National Park (BADL)	MWR	SD	-	424	893	-	1,317	
Glacier National Park (GLAC)	IMR	MT	-	104	637	7	748	
Great Smoky Mountains National Park (GRSM)	SER	TN,NC	109	206	309	4	628	
Muir Woods National Monument (MUWO)	PWR	CA	100	214	172	109	595	
Canyonlands National Park (CANY)	IMR	UT	25	177	205	69	476	
Bryce Canyon National Park (BRCA)	IMR	UT	10	132	227	71	440	
Cape Hatteras National Seashore (CAHA)	SER	NC	-	90	143	-	233	
Bandelier National Monument (BAND)	IMR	NM	22	44	32	27	125	
Everglades National Park (EVER)	SER	FL	66	26	-	-	92	
Big Cypress National Preserve (BICY)	SER	FL	63	23	-	-	86	
Natural Bridges National Monument (NABR)	IMR	UT	4	36	32	12	84	
Arches National Park (ARCH)	IMR	UT	4	18	45	16	83	
Chaco Culture National Historical Park (CHCU)	IMR	NM	11	22	20	19	72	
Canyon De Chelly National Monument (CACH)	IMR	AZ	11	19	16	17	63	
Aztec Ruins National Monument (AZRU)	IMR	NM	8	21	14	13	56	
Point Reyes National Seashore (PORE)	PWR	CA	11	18	12	13	54	
Big Bend National Park (BIBE)	IMR	TX	-	-	-	-	46	
Mesa Verde National Park (MEVE)	IMR	CO	5	16	13	10	44	
Navajo National Monument (NAVA)	IMR	AZ	4	13	9	10	36	
Olympic National Park (OLYM)	PWR	WA	3	4	17	4	28	
Hovenweep National Monument (HOVE)	IMR	UT	3	11	8	5	27	
Petrified Forest National Park (PEFO)	IMR	AZ	-	-	-	-	20	
Pecos National Historical Park (PECO)	IMR	NM	-	-	-	-	17	
Acadia National Park (ACAD)	NER	ME	2	-	13	-	15	
Capitol Reef National Park (CARE)	IMR	UT	1	5	6	3	15	
Fort Union National Monument (FOUN)	IMR	NM	-	-	-	-	14	
Hubbell Trading Post National Historic Site (HUTR)	IMR	AZ	-	-	-	-	14	
Wupatki National Monument (WUPA)	IMR	AZ	-	-	-	-	14	
El Malpais National Monument (ELMA)	IMR	NM	-	-	-	-	12	
El Morro National Monument (ELMO)	IMR	NM	-	-	-	-	12	
Petroglyph National Monument (PETR)	IMR	NM	-	-	-	-	12	
Zion National Park (ZION)	IMR	UT	-	3	3	3	9	
Colorado National Monument (COLM)	IMR	CO	1	2	3	2	8	
Capulin Volcano National Monument (CAVO)	IMR	NM	-	-	-	-	8	
Sunset Crater Volcano National Monument (SUCR)	IMR	AZ	-	2	2	2	6	
Yosemite National Park (YOSE)	PWR	CA	2	2	-	1	5	
Black Canyon Of The Gunnison National Park (BLCA)	IMR	CO	-	1	-	-	5	
Gila Cliff Dwellings National Monument (GICL)	IMR	NM	-	-	-	1	2	
Yellowstone National Park (YELL)	IMR	ID,MT,WY	-	-	1	-	1	
Dinosaur National Monument (DINO)	IMR	CO,UT	-	1	-	-	1	
Carlsbad Caverns National Park (CAVE)	IMR	NM	-	-	-	-	1	
Casa Grande Ruins National Monument (CAGR)	IMR	AZ	-	-	-	-	1	
Biscayne National Park (BISC)	SER	FL	-	-	-	-	-	
Cedar Breaks National Monument (CEBR)	IMR	UT	-	-	-	-	-	
Colonial National Historical Park (COLO)	NER	VA	-	-	-	-	-	
Coronado National Memorial (CORO)	IMR	AZ	-	-	-	-	-	
Death Valley National Park (DEVA)	PWR	CA	-	-	-	-	-	
Devils Tower National Monument (DETO)	IMR	WY	-	-	-	-	-	
Dry Tortugas National Park (DRTO)	SER	FL	-	-	-	-	-	
Fort Bowie National Historic Site (FOBO)	IMR	AZ	-	-	-	-	-	
Fort Davis National Historic Site (FODA)	IMR	TX	-	-	-	-	-	
Golden Spike National Historic Site (GOSP)	IMR	UT	-	-	-	-	-	
Grand Teton National Park (GRTE)	IMR	WY	-	-	-	-	-	
Great Sand Dunes National Park and Preserve (GRSA)	IMR	CO	-	-	-	-	-	
Guadalupe Mountains National Park (GUMO)	IMR	TX	-	-	-	-	-	
Hohokam Pima National Monument (PIMA)	IMR	AZ	-	-	-	-	-	
Lake Chelan National Recreation Area (LACH)	PWR	WA	-	-	-	-	-	
Lassen Volcanic National Park (LAVO)	PWR	CA	-	-	-	-	-	

National Park Service Unit	Region ^b	State	Reported Commercial Air Tours ^c				
			Jan-Mar	Apr-Jun	Jul-Sep	Oct-Dec	Total ^d
Mojave National Preserve (MOJA)	PWR	CA	-	-	-	-	-
Montezuma Castle National Monument (MOCA)	IMR	AZ	-	-	-	-	-
Mount Rainier National Park (MORA)	PWR	WA	-	-	-	-	-
North Cascades National Park (NOCA)	PWR	WA	-	-	-	-	-
Organ Pipe Cactus National Monument (ORPI)	IMR	AZ	-	-	-	-	-
Pipe Spring National Monument (PISP)	IMR	AZ	-	-	-	-	-
Rio Grande Wild and Scenic River (RIGR)	IMR	TX	-	-	-	-	-
Saguaro National Park (SAGU)	IMR	AZ	-	-	-	-	-
Salinas Pueblo Missions National Monument (SAPU)	IMR	NM	-	-	-	-	-
San Francisco Maritime National Historical Park (SAFR)	PWR	CA	-	-	-	-	e
San Juan Island National Historical Park (SAJH)	PWR	WA	-	-	-	-	-
Sequoia and Kings Canyon National Parks (SEKI)	PWR	CA	-	-	-	-	-
Timpanogos Cave National Monument (TICA)	IMR	UT	-	-	-	-	-
Tumacacori National Historical Park (TUMA)	IMR	AZ	-	-	-	-	-
Tuzigoot National Monument (TUZI)	IMR	AZ	-	-	-	-	-
Voyageurs National Park (VOYA)	MWR	MN	-	-	-	-	-
Walnut Canyon National Monument (WACA)	IMR	AZ	-	-	-	-	-
Yucca House National Monument (YUHO)	IMR	CO	-	-	-	-	-
Total^d			13,548	25,402	30,176	20,450	89,752

Notes:

- a. Data are subject to change pending receipt of additional reports.
- b. IMR = Intermountain Region, MWR = Midwest Region, NER = Northeast Region, PWR = Pacific West Region, SER = Southeast Region.
- c. This table lists parks where commercial air tours are authorized; a dash (-) indicates no reported tours.
- d. Totals may exceed sum of quarterly totals at parks where operators submitted annual reports.
- e. SAFR flights likely occurring in conjunction with GOGA. NPS and FAA working to clarify operator reporting requirements.

Table 2. Reported Commercial Air Tours in 2014^a (Alphabetical by Park)

National Park Service Unit	Region ^b	State	Reported Commercial Air Tours ^c				
			Jan-Mar	Apr-Jun	Jul-Sep	Oct-Dec	Total ^d
Acadia National Park (ACAD)	NER	ME	2	-	13	-	15
Arches National Park (ARCH)	IMR	UT	4	18	45	16	83
Aztec Ruins National Monument (AZRU)	IMR	NM	8	21	14	13	56
Badlands National Park (BADL)	MWR	SD	-	424	893	-	1,317
Bandelier National Monument (BAND)	IMR	NM	22	44	32	27	125
Big Bend National Park (BIBE)	IMR	TX	-	-	-	-	46
Big Cypress National Preserve (BICY)	SER	FL	63	23	-	-	86
Biscayne National Park (BISC)	SER	FL	-	-	-	-	-
Black Canyon Of The Gunnison National Park (BLCA)	IMR	CO	-	1	-	-	5
Bryce Canyon National Park (BRCA)	IMR	UT	10	132	227	71	440
Canyon De Chelly National Monument (CACH)	IMR	AZ	11	19	16	17	63
Canyonlands National Park (CANY)	IMR	UT	25	177	205	69	476
Cape Hatteras National Seashore (CAHA)	SER	NC	-	90	143	-	233
Capitol Reef National Park (CARE)	IMR	UT	1	5	6	3	15
Capulin Volcano National Monument (CAVO)	IMR	NM	-	-	-	-	8
Carlsbad Caverns National Park (CAVE)	IMR	NM	-	-	-	-	1
Casa Grande Ruins National Monument (CAGR)	IMR	AZ	-	-	-	-	1
Cedar Breaks National Monument (CEBR)	IMR	UT	-	-	-	-	-
Chaco Culture National Historical Park (CHCU)	IMR	NM	11	22	20	19	72
Colonial National Historical Park (COLO)	NER	VA	-	-	-	-	-
Colorado National Monument (COLM)	IMR	CO	1	2	3	2	8
Coronado National Memorial (CORO)	IMR	AZ	-	-	-	-	-
Death Valley National Park (DEVA)	PWR	CA	-	-	-	-	-
Devils Tower National Monument (DETO)	IMR	WY	-	-	-	-	-
Dinosaur National Monument (DINO)	IMR	CO,UT	-	1	-	-	1
Dry Tortugas National Park (DRTO)	SER	FL	-	-	-	-	-
El Malpais National Monument (ELMA)	IMR	NM	-	-	-	-	12
El Morro National Monument (ELMO)	IMR	NM	-	-	-	-	12
Everglades National Park (EVER)	SER	FL	66	26	-	-	92
Fort Bowie National Historic Site (FOBO)	IMR	AZ	-	-	-	-	-
Fort Davis National Historic Site (FODA)	IMR	TX	-	-	-	-	-
Fort Union National Monument (FOUN)	IMR	NM	-	-	-	-	14
Gila Cliff Dwellings National Monument (GICL)	IMR	NM	-	-	-	1	2
Glacier National Park (GLAC)	IMR	MT	-	104	637	7	748
Glen Canyon National Recreation Area (GLCA)	IMR	AZ,UT	189	2,134	1,682	856	4,861
Golden Gate National Recreation Area (GOGA)	PWR	CA	338	575	709	381	2,003
Golden Spike National Historic Site (GOSP)	IMR	UT	-	-	-	-	-
Grand Teton National Park (GRTE)	IMR	WY	-	-	-	-	-
Great Sand Dunes National Park and Preserve (GRSA)	IMR	CO	-	-	-	-	-
Great Smoky Mountains National Park (GRSM)	SER	TN,NC	109	206	309	4	628
Guadalupe Mountains National Park (GUMO)	IMR	TX	-	-	-	-	-
Haleakala National Park (HALE)	PWR	HI	1,187	1,289	1,341	1,115	4,932
Hawaii Volcanoes National Park (HAVO)	PWR	HI	3,342	3,415	4,053	3,617	14,427
Hohokam Pima National Monument (PIMA)	IMR	AZ	-	-	-	-	-
Hovenweep National Monument (HOVE)	IMR	UT	3	11	8	5	27
Hubbell Trading Post National Historic Site (HUTR)	IMR	AZ	-	-	-	-	14
Lake Chelan National Recreation Area (LACH)	PWR	WA	-	-	-	-	-
Lake Mead National Recreation Area (LAKE)	PWR	AZ,NV	3,045	2,753	3,768	2,594	12,160
Lassen Volcanic National Park (LAVO)	PWR	CA	-	-	-	-	-
Mesa Verde National Park (MEVE)	IMR	CO	5	16	13	10	44
Mojave National Preserve (MOJA)	PWR	CA	-	-	-	-	-
Montezuma Castle National Monument (MOCA)	IMR	AZ	-	-	-	-	-
Mount Rainier National Park (MORA)	PWR	WA	-	-	-	-	-
Mount Rushmore National Memorial (MORU)	MWR	SD	4	945	2,617	82	3,648
Muir Woods National Monument (MUWO)	PWR	CA	100	214	172	109	595
National Parks of New York Harbor Management Unit (NPNH)	NER	NY,NJ	4,866	11,905	12,056	10,970	39,797
Natural Bridges National Monument (NABR)	IMR	UT	4	36	32	12	84
Navajo National Monument (NAVA)	IMR	AZ	4	13	9	10	36
North Cascades National Park (NOCA)	PWR	WA	-	-	-	-	-
Olympic National Park (OLYM)	PWR	WA	3	4	17	4	28
Organ Pipe Cactus National Monument (ORPI)	IMR	AZ	-	-	-	-	-
Pecos National Historical Park (PECO)	IMR	NM	-	-	-	-	17
Petrified Forest National Park (PEFO)	IMR	AZ	-	-	-	-	20
Petroglyph National Monument (PETR)	IMR	NM	-	-	-	-	12
Pipe Spring National Monument (PISP)	IMR	AZ	-	-	-	-	-

National Park Service Unit	Region ^b	State	Reported Commercial Air Tours ^c				
			Jan-Mar	Apr-Jun	Jul-Sep	Oct-Dec	Total ^d
Point Reyes National Seashore (PORE)	PWR	CA	11	18	12	13	54
Rainbow Bridge National Monument (RABR)	IMR	UT	112	752	1,118	417	2,399
Rio Grande Wild and Scenic River (RIGR)	IMR	TX	-	-	-	-	-
Saguaro National Park (SAGU)	IMR	AZ	-	-	-	-	-
Salinas Pueblo Missions National Monument (SAPU)	IMR	NM	-	-	-	-	-
San Francisco Maritime National Historical Park (SAFR)	PWR	CA	-	-	-	-	e
San Juan Island National Historical Park (SAJH)	PWR	WA	-	-	-	-	-
Sequoia and Kings Canyon National Parks (SEKI)	PWR	CA	-	-	-	-	-
Sunset Crater Volcano National Monument (SUCR)	IMR	AZ	-	2	2	2	6
Timpanogos Cave National Monument (TICA)	IMR	UT	-	-	-	-	-
Tumacacori National Historical Park (TUMA)	IMR	AZ	-	-	-	-	-
Tuzigoot National Monument (TUZI)	IMR	AZ	-	-	-	-	-
Voyageurs National Park (VOYA)	MWR	MN	-	-	-	-	-
Walnut Canyon National Monument (WACA)	IMR	AZ	-	-	-	-	-
Wupatki National Monument (WUPA)	IMR	AZ	-	-	-	-	14
Yellowstone National Park (YELL)	IMR	ID,MT,WY	-	-	1	-	1
Yosemite National Park (YOSE)	PWR	CA	2	2	-	1	5
Yucca House National Monument (YUHO)	IMR	CO	-	-	-	-	-
Zion National Park (ZION)	IMR	UT	-	3	3	3	9
Total^d			13,548	25,402	30,176	20,450	89,752

Notes:

a. Data are subject to change pending receipt of additional reports.

b. IMR = Intermountain Region, MWR = Midwest Region, NER = Northeast Region, PWR = Pacific West Region, SER = Southeast Region.

c. This table lists parks where commercial air tours are authorized; a dash (-) indicates no reported tours.

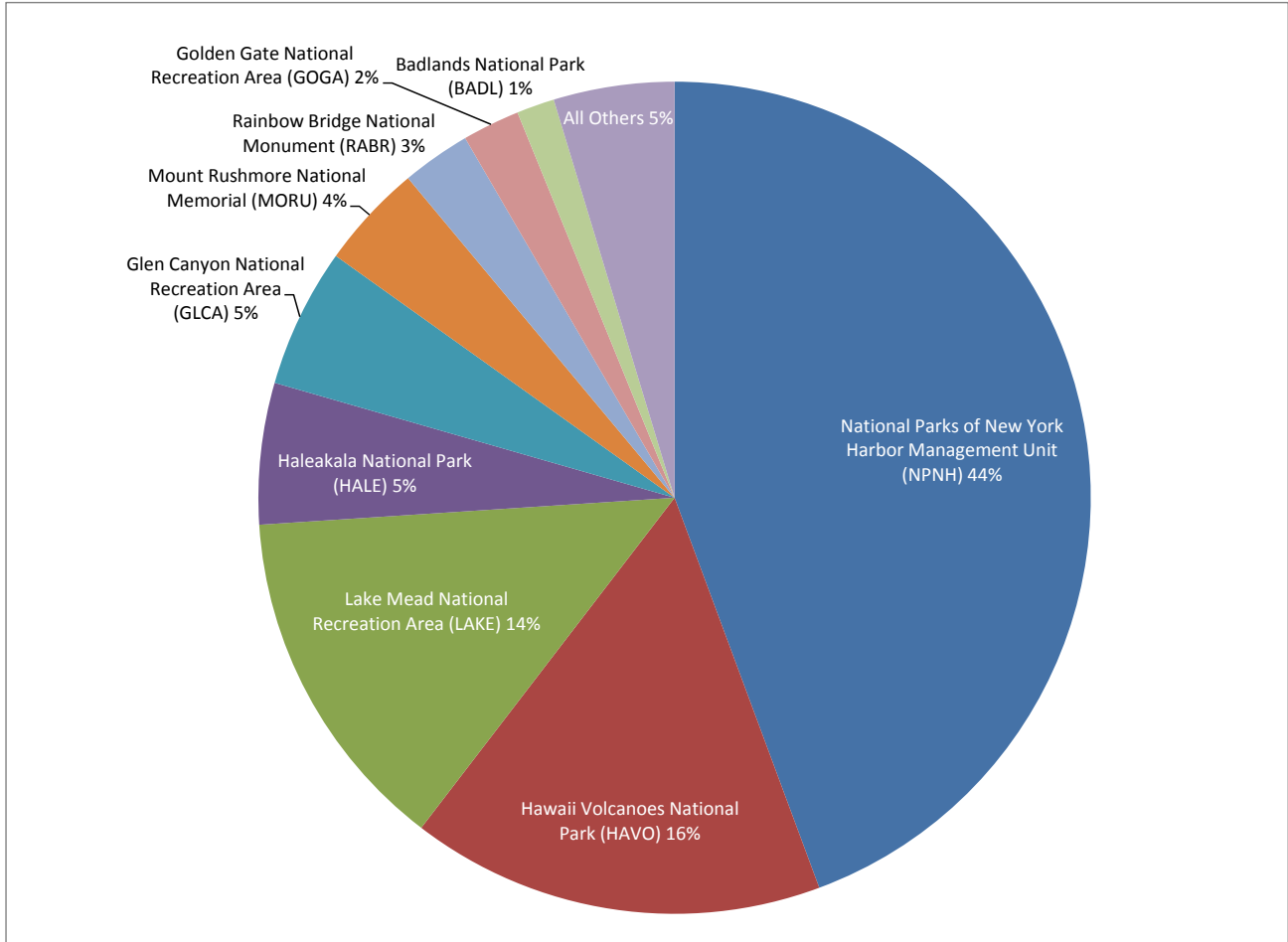
d. Totals may exceed sum of quarterly totals at parks where operators submitted annual reports.

e. SAFR flights likely occurring in conjunction with GOGA. NPS and FAA working to clarify operator reporting requirements.

Table/Figure 3. Reported Commercial Air Tours in 2014 (High-Activity Parks)

National Park Service Unit	Tours	Percent of Total	No. of Operators ^a
National Parks of New York Harbor Management Unit (NPNH)	39,797	44%	3
Hawaii Volcanoes National Park (HAVO)	14,427	16%	5
Lake Mead National Recreation Area (LAKE)	12,160	14%	5
Haleakala National Park (HALE)	4,932	5%	4
Glen Canyon National Recreation Area (GLCA)	4,861	5%	6
Mount Rushmore National Memorial (MORU)	3,648	4%	2
Rainbow Bridge National Monument (RABR)	2,399	3%	4
Golden Gate National Recreation Area (GOGA)	2,003	2%	2
Badlands National Park (BADL)	1,317	1%	1
All Others	4,208	5%	
Total	89,752		

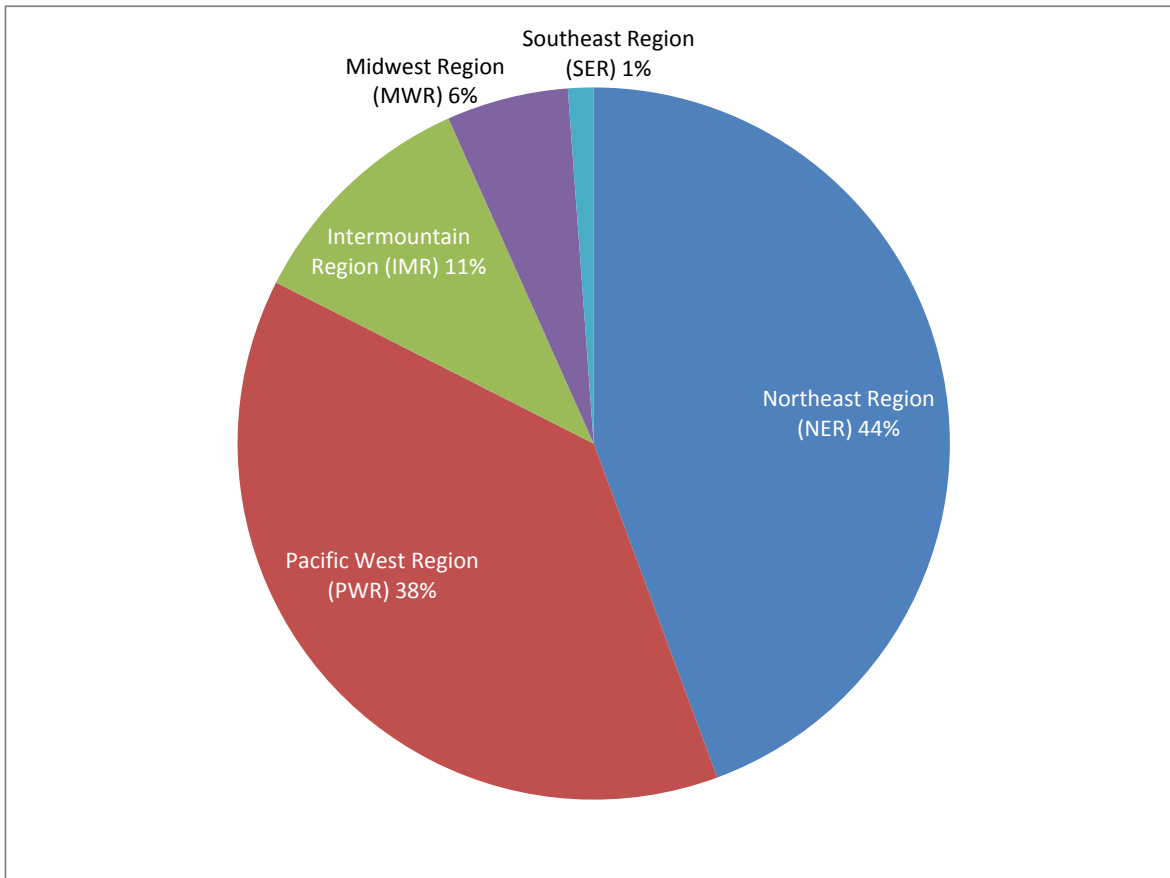
a. Who have reported at least one tour.



Table/Figure 4. Reported Commercial Air Tours in 2014 (by Region)

Region	Tours	Percent of Total	No. of Parks ^a
Northeast Region (NER)	39,812	44%	2
Pacific West Region (PWR)	34,204	38%	8
Intermountain Region (IMR)	9,732	11%	34
Midwest Region (MWR)	4,965	6%	2
Southeast Region (SER)	1,039	1%	4
Total	89,752		50

a. Where at least one tour has been reported



Table/Figure 5. Reported Commercial Air Tours in 2013 and 2014 (by Quarter)

Year	Tours by Quarter			
	Jan-Mar	Apr-Jun	Jul-Sep	Oct-Dec
2013	14,755	22,748	24,200	18,718
2014	13,548	25,402	30,176	20,450

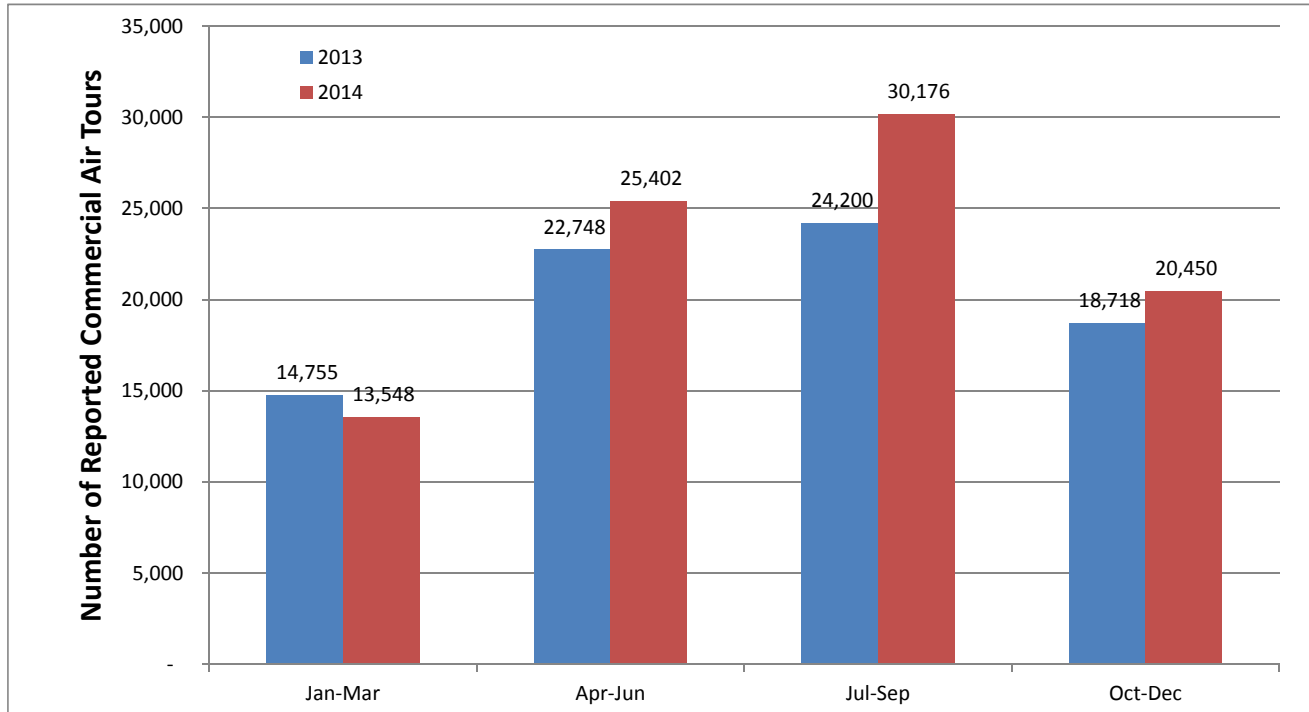


Table 6. Operators Conducting Tours in 2014

This table shows how many parks have the corresponding number of operators. For example, 70% of parks, where at least one flight has been reported, have only 1 active operator, 14% of the parks have 2 active operators, 2% have 3 operators, etc.

No. Oprs.	No. Parks	% of Parks
1	35	70%
2	7	14%
3	1	2%
4	4	8%
5	2	4%
6	1	2%