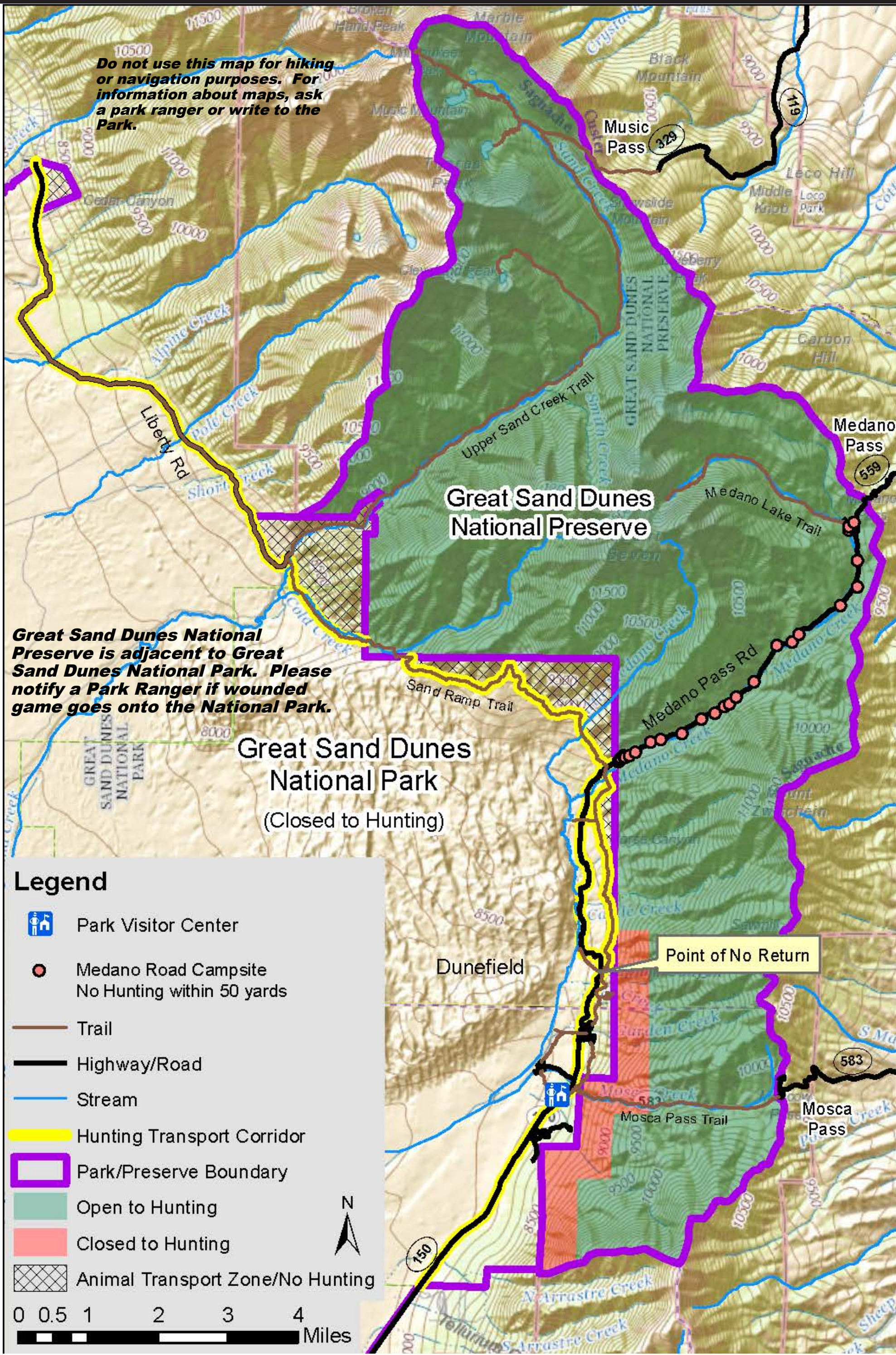




# Hunting Areas and Animal Transport Corridors



**Do not use this map for hiking or navigation purposes. For information about maps, ask a park ranger or write to the Park.**

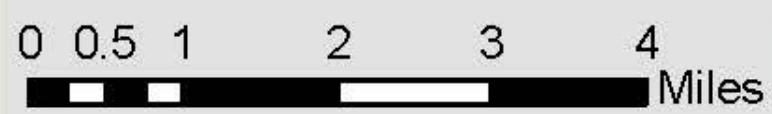
**Great Sand Dunes National Preserve is adjacent to Great Sand Dunes National Park. Please notify a Park Ranger if wounded game goes onto the National Park.**

**Great Sand Dunes National Park**  
(Closed to Hunting)

**Great Sand Dunes National Preserve**

## Legend

- Park Visitor Center
- Medano Road Campsite  
No Hunting within 50 yards
- Trail
- Highway/Road
- Stream
- Hunting Transport Corridor
- Park/Preserve Boundary
- Open to Hunting
- Closed to Hunting
- Animal Transport Zone/No Hunting





## Hunting Information and Regulations



Welcome to Great Sand Dunes National Preserve. Game species found here include turkey, mountain lion, bear, bighorn sheep, elk and mule deer. To help improve game harvest estimates and management of big game species, hunters should notify a National Park Service Ranger or Colorado District Wildlife Manager after taking one of these animals.

### General Information

The National Park Service wants all hunters to have a safe hunt. All hunters are required to have a Colorado State Hunting License with appropriate endorsements to match the game being hunted.

When using horses while hunting and camping, be aware of the Preserve's regulations on feed and corraling them. These can be found on the Park and Preserve's website.

Much of the Preserve is within the Sangre de Cristo Wilderness Area. As with any wilderness area, the use of game carts and any other mechanical device is prohibited.

It is the responsibility of the hunter to be aware of applicable federal regulations on federal lands.



### Seasons and Regulations

Hunting seasons for Great Sand Dunes National Preserve are outlined in the annual hunting brochures published by Colorado Parks and Wildlife. These are available directly from Colorado Parks and Wildlife as well as state hunting license retailers.

Colorado Parks and Wildlife's website:  
<http://cpw.state.co.us/>

Great Sand Dunes National Preserve enforces all Colorado State hunting laws in addition to Federal and specific Preserve Regulations.

Preserve Regulations can be found in the Superintendent's Compendium located on the Park and Preserve's website.

### Safety

**HUNTER ORANGE:** Hunters are **required** to wear 500 square inches of solid daylight fluorescent orange material on an outer garment while hunting deer, elk and bear with any firearm license. Daylight fluorescent orange headwear must be worn.

This includes all muzzleloader hunters. It also includes archery hunters who hunt during rifle season.

**WEATHER:** Sudden changes in weather are common. Hunters should be equipped for severe weather. Always check local forecasts prior to hunting.

**FIRES:** Fires are permitted only in established camping areas unless a burn ban is in effect. Fires should not be left unattended; they must be extinguished completely with water before leaving camp. No fires are permitted in the backcountry.

### Prohibited Activities

The following are PROHIBITED:

1. Poaching of out-of-season game. These incidents should be reported to a Park Ranger or a Colorado District Wildlife Manager immediately.
2. Baiting animals.
3. Use of artificial lighting (i.e. spotlighting) for hunting.
4. Hunting or releasing feral livestock within the boundaries of the park.
5. Permanent stands or blinds. Temporary blinds must have the hunter's name and telephone number on the blind, and the blind must be removed within 24 hours of hunt.
6. Discharge of a weapon other than legal taking of game, including target shooting or weapon sighting. Exemption: Primitive weapons may be discharged prior to transportation.
7. Hunting or shooting from or across a roadway.
8. Traveling off designated roadways.
9. Operating an ORV or ATV.
10. Camping for more than 14 days. However, between September 1st and November 30th, camping for hunting activities for up to thirty calendar days will be allowed if the equipment is identified with the hunter's name and telephone number.
11. Leaving a camp unattended for more than 24 hours.
12. Digging or leveling the ground for a camp area.
13. Firewood, such as pallets with nails/hardware, unless the hazards are removed before burning.



For further information about Great Sand Dunes National Preserve facilities, services and programs, write or call:

Superintendent  
Great Sand Dunes National Preserve  
11500 HWY 150  
Mosca, CO 81146

(719) 378-6300

<http://www.nps.gov/grsa>

In case of emergency, telephone 911.  
For non-emergencies, telephone  
Colorado State Patrol  
Dispatch at (719) 589-5807.

The employees and volunteers of Great Sand Dunes National Park and Preserve want you to have a **SAFE** and enjoyable hunting experience.