



**National Park Service  
U.S. Department of the Interior**



**Grant-Kohrs Ranch National Historic Site**  
266 Warren Lane, Deer Lodge, MT 59722  
406-846-2070 phone

**Superintendent's Compendium**  
of Designations, Closures, Permit Requirements and Other  
Restrictions Imposed Under Discretionary Authority

---

Approved  
Date: 6/5/2026

In accordance with regulations and the delegated authority provided in Title 36, Code of Federal Regulations ("36 CFR"), Chapter 1, Parts 1-7, authorized by Title 16 United States Code, Section 3, the following provisions apply to all lands and waters administered by the National Park Service, within the boundaries of Grant-Kohrs Ranch National Historical Site. Unless otherwise stated, these regulatory provisions apply in addition to the requirements contained in 36 CFR, Chapter 1, Parts 1-7.

*Written determinations, which explain the reasoning behind the Superintendent's use of discretionary authority, as required by Section 1.5(c), appear in this document identified by italicized print following the title Determination Statement.*

### **36 CFR §1.4 DEFINITIONS**

*Unmanned aircraft* means a device that is used or intended to be used in flight in the air without the possibility of direct human intervention from within or on the device and the associated operational elements and components that are required for the pilot or system operator in command to operate or control the device (such as cameras, sensors, communication links). This term includes all types of devices that meet this definition (e.g., model airplanes, quadcopters, drones) that are used for any purpose, including for recreation or commerce.

*Preservation Subzone* means the area of the park east of the Clark Fork River, surrounding the park's historic structures. See map on page 10 for more details.

*Special Use Zone* means areas of the park that are closed to the public access. See "Closures" on page 4 for more details.

*Grazing/Haying Subzone* means all areas within the park that are not part of the Preservation Subzone or Special Use Zone.

## **36 CFR §1.5 – VISITING HOURS, PUBLIC USE LIMITS, CLOSURES, AND AREA DESIGNATIONS FOR SPECIFIC USE OR ACTIVITIES**

**36 CFR 1.5 (a)(1) The following visiting hours and public use limits are established for all or for the listed portions of the park, and the following closures are established for all or a portion of the park to all public use or to a certain use or activity:**

### Visiting Hours:

- Public access is open to the Preservation Subzone (see map on page 10), the Visitor Center Parking Lot, the Visitor Center and walking trail, and the Nature Trail, unless otherwise posted:
  - Memorial Day to Labor Day from 9:00 am to 5:30 pm
  - Labor Day to Memorial Day 9:00 am to 4:30 pm
- Roads and trails West of the River in the Grazing/Haying Subzone are open to the public from dawn to dusk.
- Public access may be provided at designated times by ranger guided tour, special use permit, or upon specific authorization of the Superintendent.

*Determination Statement: Public hours are established in order to protect the natural and cultural resources from resource damage, theft, vandalism and inappropriate activities, in addition to protecting visitor safety since some of these areas can present hazardous conditions, which become extreme during seasonal variations of weather and daylight.*

### Public Use Limits:

- Motor vehicle access is limited to the Visitor Center parking area and the handicapped parking East of the Dairy Barn. See Parking map on page 12. Use of motor vehicles such as Segways and motorized scooters are prohibited in the National Historic Site.

*Determination Statement: Public use limits are established to protect resources and visitor safety. Use of motor vehicles such as Segways and motorized scooters within the historic site are considered inappropriate for the purposes for which the historic site was intended.*

*Restrictions may also help to reduce user conflicts and protect the historic scene.*

- Any visitor with a disability is permitted to use a motorized wheelchair, Segway, or motorized scooter throughout the historic site, including all structures, facilities, monument roads, sidewalks, trails and other surfaces where the general public is allowed access and when such devices are used for the sole purpose of mobility assistance. Use of any mobility assistive device, as outlined above, must also adhere to the following:
  - No person under 16 years of age may operate a motorized wheelchair, Segway or motorized scooter without direct adult supervision.
  - The person utilizing a Segway will be escorted by NPS staff to minimize the potential danger that operating such a device around livestock may elicit.
  - A person shall operate any mobility assistive device in a safe and responsible manner so as not to endanger one's self or any other historic site visitor.
  - A person riding any mobility assistive device shall have all the rights and duties applicable to a pedestrian under the same circumstances, except that the mobility assistive device operator must always yield to pedestrians.

- Any visitor requiring the use of a mobility assisted device should park at the Handicapped parking East of the Dairy Barn and is permitted to drive the device on the site's gravel administrative use roads, but is not permitted on the paved visitor center walking trail due to visitor safety concerns. See Parking map on page 12.

*Determination Statement: The Segway is a two-wheeled, gyroscopically stabilized, battery powered personal transportation device. While Segways, golf carts, and motorized scooters (or similar devices) are not “designed solely for” mobility-impaired persons and thus do not meet the definition of a motorized wheelchair in 36 CFR Section 1.4, some individuals with disabilities use these devices as their means of personal mobility, in lieu of more traditional devices like the wheelchair. In accordance with Management Policies, Section 8.2.4 and Director's Order 42, the NPS is committed to making all reasonable efforts to make its programs, facilities, and services accessible to people with disabilities. Allowing the use of motorized wheelchairs, Segways, golf carts, and motorized scooters by people with disabilities is part of this effort.*

- Service Animals, as defined under 28 CFR 36.104, are “any guide dog, signal dog, or other animal individually trained to do work or perform tasks for the benefit of an individual with a disability.” Animals that meet this definition are considered service animals regardless of whether they have been licensed or certified by a State or local government. The Superintendent may close an area to all service animals upon an individualized assessment and a written determination that allowance of any domestic animal would pose a direct threat to the health and safety of people, livestock or wildlife. Individual service animals may be prohibited from any area upon an individualized assessment that the animal's current behavior poses a direct threat to the health and safety of people or wildlife or when presence of the animal would result in a fundamental alteration to the nature of the historic site or public activities.

*Determination Statement: Service animals for persons with disabilities have traditionally been understood to be guide dogs for blind individuals and hearing assistance dogs for persons with hearing impairments. Because these animals provide service for persons with disabilities, they are not considered to be pets and, consequently, are not regulated as pets. Accordingly, they have been allowed to go into areas where pets are traditionally prohibited and are exempt from prohibitions on pets in NPS areas. In 1990, with the passage of the Americans with Disabilities Act (ADA), the Department of Justice (DOJ) expanded the concept of service animals to include those providing a service for individuals with other disabilities. 36 CFR 2.15 states “guide dogs for the blind” and “signal dogs for persons with hearing impairments” are exempt from prohibitions on pets. All service animals are exempt from prohibitions on pets and, when accompanying a person with a disability (as defined by Federal law and DOJ regulations), will be allowed wherever visitors or employees are allowed. In accordance with Management Policies, Section 8.2.4 and Director's Order 42, the NPS is committed to making all reasonable efforts to make its programs, facilities, and services accessible to people with disabilities. The NPS has set a goal of ensuring that all people, including persons with disabilities, have the highest level of accessibility that is reasonable to our programs, facilities, and services in conformance with applicable regulations and standards. Therefore the definition of service animals has been expanded to be consistent with the DOJ definition in order to allow all service animals accompanying persons with disabilities the same privileges currently provided to guide dogs and hearing assistance dogs. Historic Site managers determined that the use of service animals by persons with disabilities is generally safe and appropriate in all areas currently open to access by the general public.*

Closures:

- All park areas are closed on New Year's Day, Thanksgiving Day, and Christmas Day.
- Areas within the Special Use Zone are closed to the public. The Special Use Zone includes the city of Deer Lodge's wastewater treatment facility, the sewage lagoons, and the Burlington Northern/Montana Western railroad right-of-way.
- HS-01 The Ranch House is closed to the public except by escorted tour or by permit approved by the Superintendent.
- Building 9004 Museum Storage Facility is closed to the public except by escorted tour or by appointment with the park curator subject to staff availability.

*Determination Statement: It is necessary to establish these area closures and restrictions in order to protect the natural and cultural resources from resource damage, theft, vandalism and inappropriate activities. It is also necessary for visitor safety since some of these areas can present hazardous conditions, which become extreme during seasonal variations of weather and daylight, and construction activities.*

- Launching, landing, or operating an uncrewed or remotely piloted aircraft from or on lands and waters administered by the National Park Service within the boundaries of Grant-Kohrs Ranch National Historic Site is prohibited except as approved in writing by the Superintendent.

*Determination Statement: The use of unmanned aircraft may negatively impact public safety, natural or cultural resources and could conflict with visitor use activities.*

**36 CFR 1.5(a)(2) - Designate Areas for a specific use or activity or impose conditions or restrictions on a use or activity.**

- Filming, still photography, and audio recording activity may require a permit, consistent with 54 U.S.C. 100905.
- Filming, still photography, and audio recording activity that occurs in closed areas, requires exclusive use of a site or area, or involves a set or staging equipment other than handheld equipment (such as a tripod, monopod, and handheld lighting equipment) requires a permit, unless the activity is affiliated with an activity or event that has been allowed under a written authorization, such as a special use permit.
- Filming, still photography, and audio recording that involves more than eight individuals requires a permit, unless the NPS has specifically notified an individual or group that a permit is not required, or if the activity is affiliated with an activity or event that has been allowed under a written authorization, such as a special use permit.
- If a permit is required for the reasons stated above, or if the NPS otherwise determines and then notifies an individual or group that a permit is required for a filming, still photography, or audio recording activity, then engaging in that activity without a permit is prohibited. Violating a term or condition of a permit issued by the NPS for a filming, still photography, or audio recording activity is prohibited, and may result in the suspension or revocation of the permit, in addition to any penalties that may apply under 36 CFR 1.3.

*Federal law at 54 U.S.C. 100905 states that permits and fees are not required for filming, still photography, or audio recording in park areas if certain requirements are met. These requirements address various topics, including, but not limited to, group size, location,*

*equipment, potential impacts to resources and visitors, and the likelihood that the NPS will incur related administrative costs. If any of these requirements are not met, the law allows the Secretary of the Interior, acting through the NPS, to require a permit for the subject activity. Permit requirements are imposed by the Superintendent under discretionary authority provided by 36 CFR 1.5(a)(2), which allows the Superintendent to impose conditions or restrictions on a use or activity, consistent with applicable legislation, to implement management responsibilities. The general regulations for permits in 36 CFR 1.6 do not apply to permits issued for filming, still photography, and audio recording, which instead are governed by the statutory provisions in 54 U.S.C. 100905. The imposition of permit requirements, on a case-by-case basis, for filming, still photography, or audio recording does not require rulemaking under 36 CFR 1.5(b). Requiring a permit with reasonable terms and conditions in accordance with statutory requirements at 54 U.S.C. 100905 is not highly controversial, will not result in a significant alteration in the public use pattern of the System unit, will not adversely affect the System unit's natural, aesthetic, scenic or cultural values, or require a long-term or significant modification in the resource management objectives of the System unit, because the permit requirement is limited in time and scope to the specific activities authorized by the permit, which contain terms and conditions that protect the values, resources, and visitors of the System unit, and implements federal law.*

### **36 CFR §1.6(f) – ACTIVITIES THAT REQUIRE A PERMIT**

**(f) The following is a list of prohibited or restricted activities the Superintendent may authorize through a permit:**

- Some filming, still photography, and audio recording (depends upon the facts and circumstances; contact the park for more information). 36 CFR 1.5(a)(2) and 54 U.S.C. 100905.
- §1.5(d) The following activities related to Public Use Limits:
  - Demonstrations
  - Special Events
  - Weddings
  - Athletic Events
  - Driving horse-drawn wagon
  - First Amendment Activities
- §2.5(a) Specimen collection (Taking of plant, fish, wildlife, rocks or minerals)
- §2.37 Soliciting or demanding gifts, money goods or services (Pursuant to the terms and conditions of a permit issued under §2.50, §2.51 or §2.52)
- §2.60(b) Livestock use and agriculture
- §2.62 Memorialization:
  - (a) Erection of monuments (Requires approval from Regional Director)
  - (b) Scattering ashes from human cremation

- §5.1 Advertisements (Display, posting or distribution)
- §5.3 Engaging in or soliciting any business (Requires a permit, contract or other written agreement with the United States, or must be pursuant to special regulations).

## **GENERAL REGULATIONS**

### **36 CFR §2.1 – PRESERVATION OF NATURAL, CULTURAL AND ARCHEOLOGICAL RESOURCES**

**(c)(1), (c)(2) The following fruits, nuts, berries or unoccupied seashells may be gathered by hand for personal use or consumption, in accordance with the noted size, quantity, collection sites and/or use or consumption restrictions:**

- Apples: hand gathered for personal, non-commercial use and consumption in the park only
- Gooseberries: hand gathered for personal, non-commercial use and consumption in the park only
- Chokecherries: hand gathered for personal, non-commercial use and consumption in the park only

*Determination Statement: The park determined that collection of these items for personal use will not have a negative impact on natural resources. Allowing limited harvesting for human consumption is meant to assure fruits are also available for wildlife.*

### **36 CFR §2.10 – CAMPING AND FOOD STORAGE**

Camping is prohibited in the park.

*Determination Statement: The park does not have the infrastructure to support overnight stays and the lack of facilities would lead to resource damage if camping occurred.*

### **36 CFR §2.11 – PICNICKING**

Picnicking is permitted in all outdoor public areas on a first come, first serve basis. Picnicking is also permitted in the dairy barn (HS-9) and the stallion barn (HS-19). Visitors must clean up after themselves.

### **36 CFR 2.13 – FIRES**

**(a)(1) The lighting or maintaining of fires is generally prohibited, except as provided for in the following designated areas and/or receptacles, and under the conditions noted:**

#### Established Conditions for Fires:

- During authorized interpretive functions using fire containment appropriate to the function.
- The use of stoves, charcoal, or gas grills or other cooking devices by the public is prohibited.

- Groups may request use of stoves, grills, or fire through a special use permit. Fires must be monitored at all times.
- A fire may be ignited and maintained only by using fuel sources designed and commonly used for warmth or the preparation of food, such as charcoal briquettes or natural firewood. Lighting or maintaining a fire with other materials including, but not limited to, flammable liquids, garbage, fireworks, plastics, aerosol canisters, batteries, or other manufactured or synthetic materials, is prohibited.
- During periods of high fire danger, the Superintendent may close all or a portion of the park to the lighting and maintaining of fires.

*Determination Statement: This action is necessary for the maintenance of public health and safety, protection of environmental or scenic values, protection of natural or cultural resources, and the implementation of management responsibilities. Fires and ash disposal are regulated to protect human life, park structures and park resources. The park does not have the infrastructure for safe use and containment of fire, ash, or hot coals. Use of stoves, grills and cooking devices could put park resources at risk. Materials other than approved combustibles – especially fire accelerants and substances prone to wind transport or explosion – creates serious risks when used to light or maintain fires. These combustibles can ignite or spread wildfires that directly threaten people and valuable resources and assets. The burning of manufactured or synthetic materials can contribute to air pollution, contaminate soil and water, and be toxic to humans and the environment. Less restrictive measures, such as an education campaign informing visitors of the risks of using certain materials to light or maintain a fire, would not be commensurate with the substantial risks associated with those activities and could lead to adverse outcomes that might be prevented by establishing an enforceable condition.*

### **36 CFR §2.15 – PETS**

#### **(a)(1) Dogs, cats and other pets are prohibited in the following areas:**

- All park buildings.
- Trails and administrative roads in the Preservation Subzone (see maps on page 10 and page 14).

*Determination Statement: Pet behavior can interfere with the natural sounds of the park and can scare wildlife and ranch livestock. Note: Section 36 CFR §1.5 of this Compendium addresses service animals.*

#### **(a)(3) Pets may be left unattended in vehicles in the Visitor Center park area, under the conditions noted:**

- No barking, growling, or howling
- As long as they have proper ventilation and water and if weather conditions are not hazardous to the immediate welfare of the animal.

*Determination Statement: The park wants to ensure the safety and well-being of visitors and their pets.*

#### **(a)(5) Pet excrement must be disposed of in accordance with the following conditions:**

- Pet excrement must be immediately collected by the pet handler and disposed of in the nearest trash receptacle. If there is not a trash receptacle in the area, the excrement shall be removed from the site.

*Determination Statement: Cattle and horse excrement is easily recognizable and appropriate to*

*this operating ranch. Pet excrement has an undesirable smell and is unsightly.*

### **36 CFR §2.16 – HORSES and PACK ANIMALS**

**(a) The use of horses or pack animals is allowed on the following trails, routes or areas (see attached map titled “Horse Trails” on page 11):**

- Horses and pack animals should stay on designated roads and trails shared with park vehicles and visitors.
- Horses and pack animals must stay at least 100 feet away from all livestock.

*Determination Statement: We must ensure the welfare of the park livestock, prevent invasive plants and weeds from entering the ranch grounds, and ensure safety for all visitors.*

**(g) Other conditions concerning the use of horses or pack animals:**

- Riding is limited to speeds no faster than a trot.
- Horses and pack animals must proceed at a slow walk and yield when passing in the immediate vicinity of persons on foot.
- Riders must leave gates as they find them. If the gate is found closed, rider must close the gate after passing through.
- Cleaning of horse trailers on site is prohibited.
- All horses must arrive healthy, physically sound, and have a safe temperament.

*Determination Statement: We must ensure the welfare of the park livestock, prevent invasive plants and weeds from entering the ranch grounds, and ensure safety for all visitors.*

### **36 CFR §2.21 – SMOKING**

**(a) Smoking is only allowed in the following areas as long as individuals are 25 feet from buildings:**

- The Visitor Center parking lot.
- The Warren House parking lot.
- The parking area outside the Maintenance Shop.

*Determination Statement: Smoking is prohibited in all but the above areas to protect park resources, reduce the risk of fire, or prevent conflicts among visitor use activities.*

### **36 CFR §2.35 – ALCOHOLIC BEVERAGES and CONTROLLED SUBSTANCES**

**(a)(3)(i) The possession or consumption of alcoholic beverages is prohibited unless possession and or consumption is permitted in association with a special use permit approved by the Superintendent.**

*Determination Statement: The park is closed to alcohol consumption as this activity is incompatible with the historic nature of the park and its potential to negatively impact visitor experience.*

### **36 CFR §2.51 – DEMONSTRATIONS**

**(b) Demonstrations of 25 people or less are allowed within the park areas designated as available under paragraph (c)(2). However, there are exceptions and, even when not required, a permit is recommended or in order to ensure space will be available at a particular designated location. Demonstrations of more than 25 people are allowed at designated locations areas when the Superintendent has issued a permit for the activity.**

**(c)(2) The following locations are designated as available for demonstrations:**

- The south side of the Visitor Center parking lot is identified as the “Free Speech Designated Area.” A map showing the location is located on page 13 of this document.

### **36 CFR §2.52 – SALE OR DISTRIBUTION OF PRINTED MATTER**

**(c)(4) The following locations are designated as available for the sale and distribution of non-commercial printed matter when a permit has been issued by the Superintendent.**

- The south side of the Visitor Center parking lot is identified as the “Free Speech Designated Area.” A map showing the location is located on page 13 of this document.

### **36 CFR §2.62 – MEMORIALIZATION**

**(b) A permit is required for the scattering of ashes from cremated human remains, or in the following designated areas without a permit, in accordance with the following terms and conditions:**

- The remains to be scattered must have been cremated and pulverized.
- The scattering of remains by persons on the ground is to be performed at least 100 yards from any trail, road, developed facility, or body of water.

### **36 CFR §4.30 - BICYCLES**

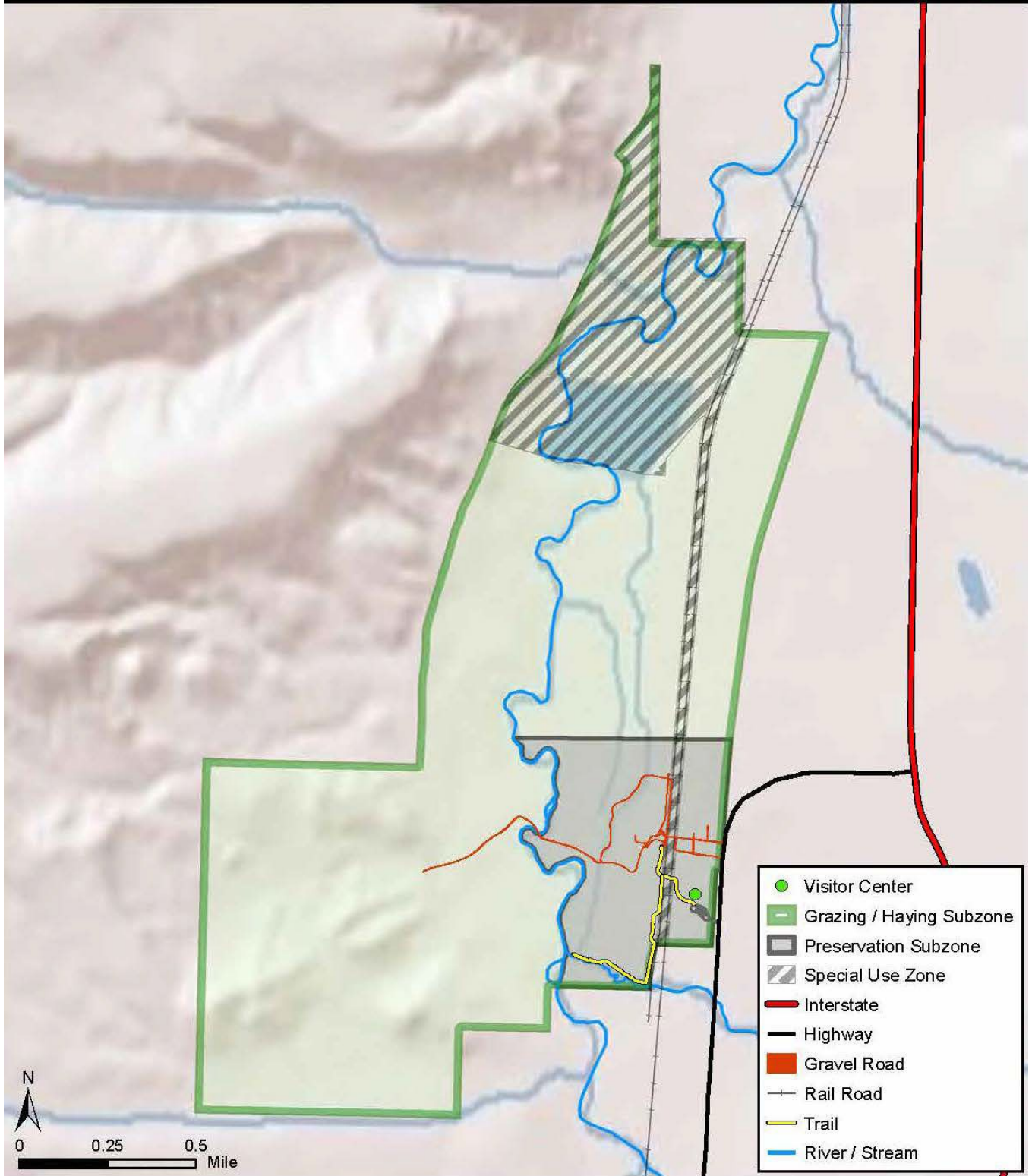
- Bicycle use is authorized for use on the West Side Road from the Washington Street Entrance to the park boundary at the Old Wood Hay Stacker. (see page 14)
- Bicycle use is prohibited on all other trails and administrative roads within the boundaries of the park.

*Determination Statement: On September 24th, 2021, the Superintendent designated West Side Road as open to bicycle use after making the written determination required by 36 CFR §4.30(b). Bicycles could conflict with visitor experience in the Preservation Subzone as well as livestock or equipment movement on administrative roads and trails. In order to manage user conflicts and provide for recreation with minimal impact, bicycle use is authorized on one administrative road which connects on the south to the City of Deer Lodge and on the north to Powell County’s Old Yellowstone Trail.*

# Grant-Kohrs Ranch National Historic Site

## Preservation Subzone

Intermountain Region  
National Park Service  
U.S. Department of the Interior



Produced by the Intermountain Region Geographic Resources Division  
Denver, Co

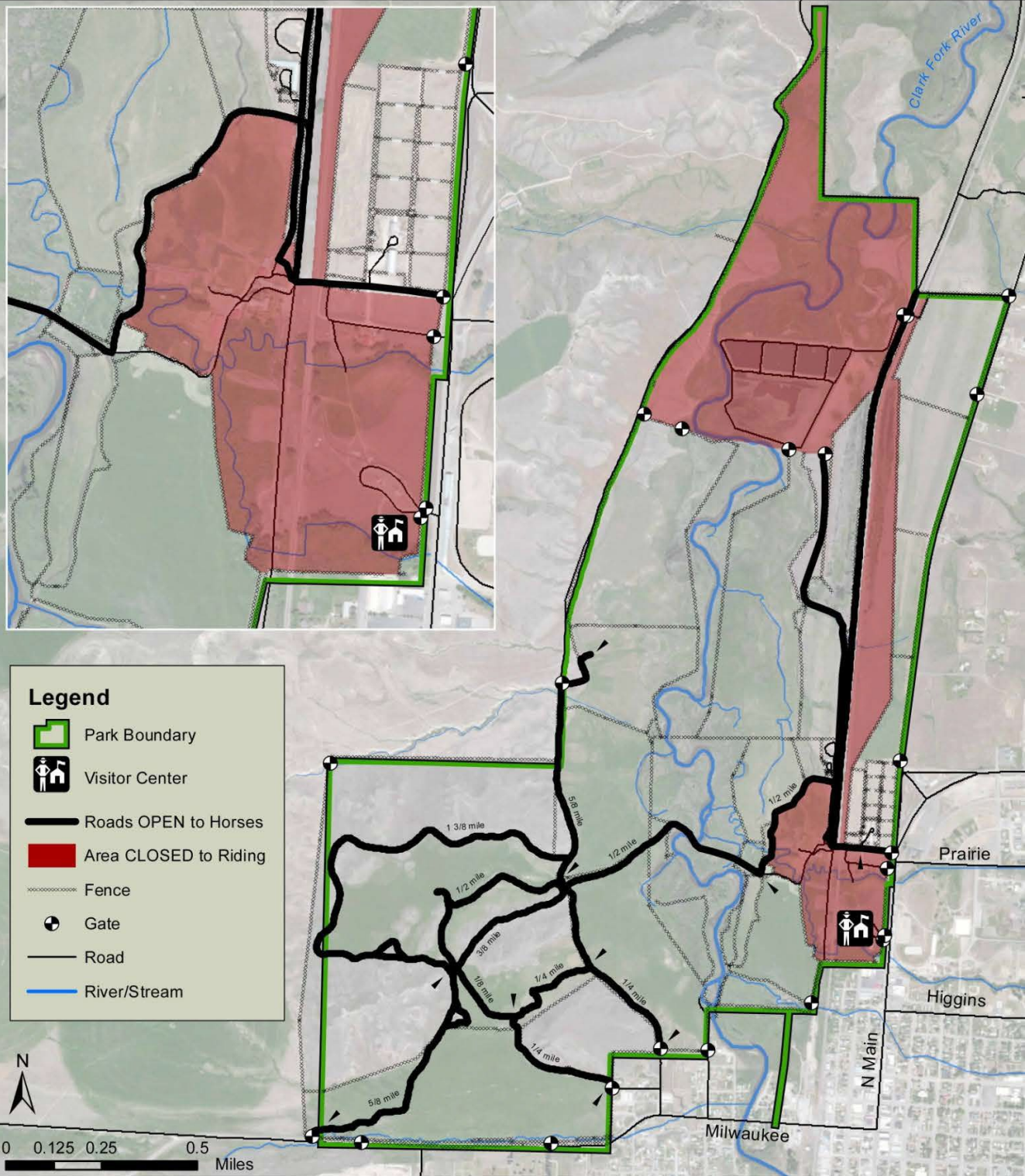
August 2014  
Data Sources: NPS Park Data

14\_04/ParkMap\_NoLabels

# Grant-Kohrs Ranch National Historic Site

## Horse Trails

Intermountain Region  
National Park Service  
U.S. Department of the Interior

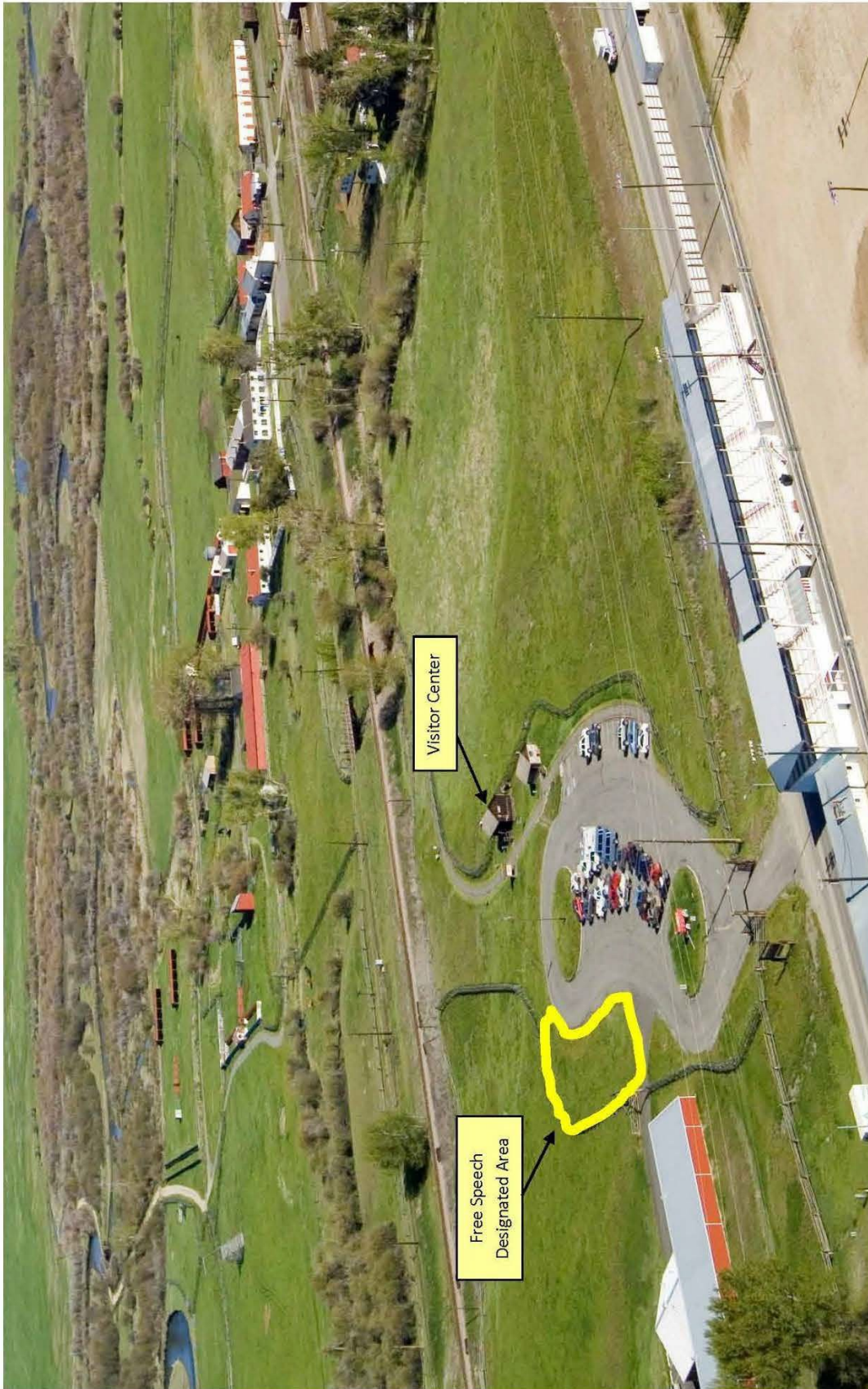


Produced by the Intermountain Region Geographic Resources Division  
Denver, Co

August 2014  
Data Sources: ESRI Basedata, NPS Park Data  
GRKO\_14\_05\_HorseTrailMapMXDs\FinalGRKO\_HorseMap.mxd



# Public Assemblies and Distribution of Printed Materials



Free Speech Designated Area is 0.14 acres or approximately 6,100 sq. feet.

# Park Trails

Totaling 10.5 miles

Grant-Kohrs Ranch National Historic Site  
Deer Lodge, Montana

National Park Service  
U.S. Department of the Interior



Limited Parking	Fence
<b>Maintained Trails</b>	West Side Road
Dogs on Leash	Clark Fork River
No Dogs	Railroad
<b>Non-Maintained Trails</b>	Park Boundary Fence
Seasonally Wet/Dogs on Leash	Gates

### Trail Courtesies

Welcome to Grant-Kohrs Ranch trail system. Before you enjoy your hike, please be aware of a few instructions.

Feel free to go through a closed gate, but leave any gate as you find it.

Bikes are allowed on West Side Road only, prohibited all other areas.

Railroad line is active, use caution when crossing.

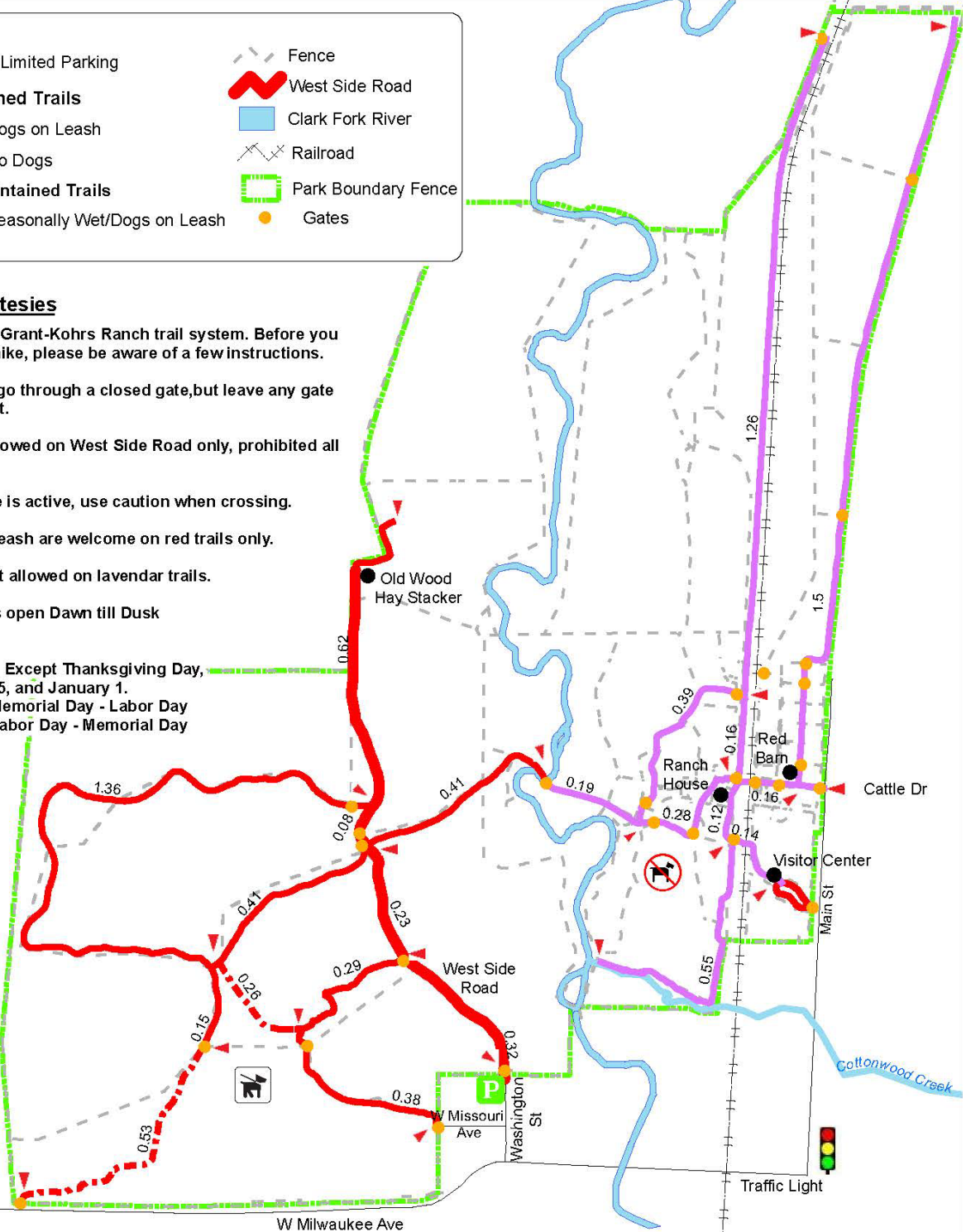
Dogs on a leash are welcome on red trails only.

Dogs are not allowed on lavender trails.

Hiking Trails open Dawn till Dusk

### Park Hours

Open Daily: Except Thanksgiving Day,  
December 25, and January 1.  
9:00 - 5:30 Memorial Day - Labor Day  
9:00 - 4:30 Labor Day - Memorial Day



September 2021  
Data Sources: ESRI Basedata, NPS Park Data  
Map Created by GRKO GIS  
P:\GIS\IMRP\Projects\Interpretation\2021 Trail Update\MXD\2021

