



United States Department of the Interior

NATIONAL PARK SERVICE
George Washington Memorial Parkway
700 George Washington Memorial Parkway
McLean, Virginia 22101

IN REPLY REFER TO:
10.B (Management)

Memorandum

To: Interested Party

From: George Washington Memorial Parkway Superintendent **CHRISTINE SMITH** Digitally signed by CHRISTINE SMITH
Date: 2024.10.24 13:15:41 -04'00'

Subject: Scattering Ashes at Great Falls Park, Virginia

This letter is in regard to scattering ashes or cremains within Great Falls Park, Virginia park boundaries. The conditions pertaining to this activity are outlined in Title 36, Code of Federal Regulations, Section 2.62 (b), which states: "The scattering of human ashes from cremation is prohibited, except pursuant to the terms and conditions of a permit, or in designated areas according to conditions which may be established by the Superintendent."

In Great Falls Park, Virginia, human ashes may be distributed in the undeveloped areas of the Old Carriage Road that are at a minimum, fifty feet from any developed location such as a road, towpath, hiking trail, building, parking lot, etc.

Ashes from cremated human remains must be scattered in a manner to disperse their identity. No teeth, bone fragments or remnants recognizable as human cremains shall be scattered. Ashes from cremated remains are prohibited in any area normally closed to the public and from being placed within fifty feet of the Potomac River, stream, or other natural body of water.

The use of drones to scatter ashes is prohibited along with the placement of any monument or marker recognizing the scattering of cremated human remains.

Please notify the Park Permits Office by phone, (703) 289-2513, or email, gwmp_sup@nps.gov, of your name and the date the activity will take place.

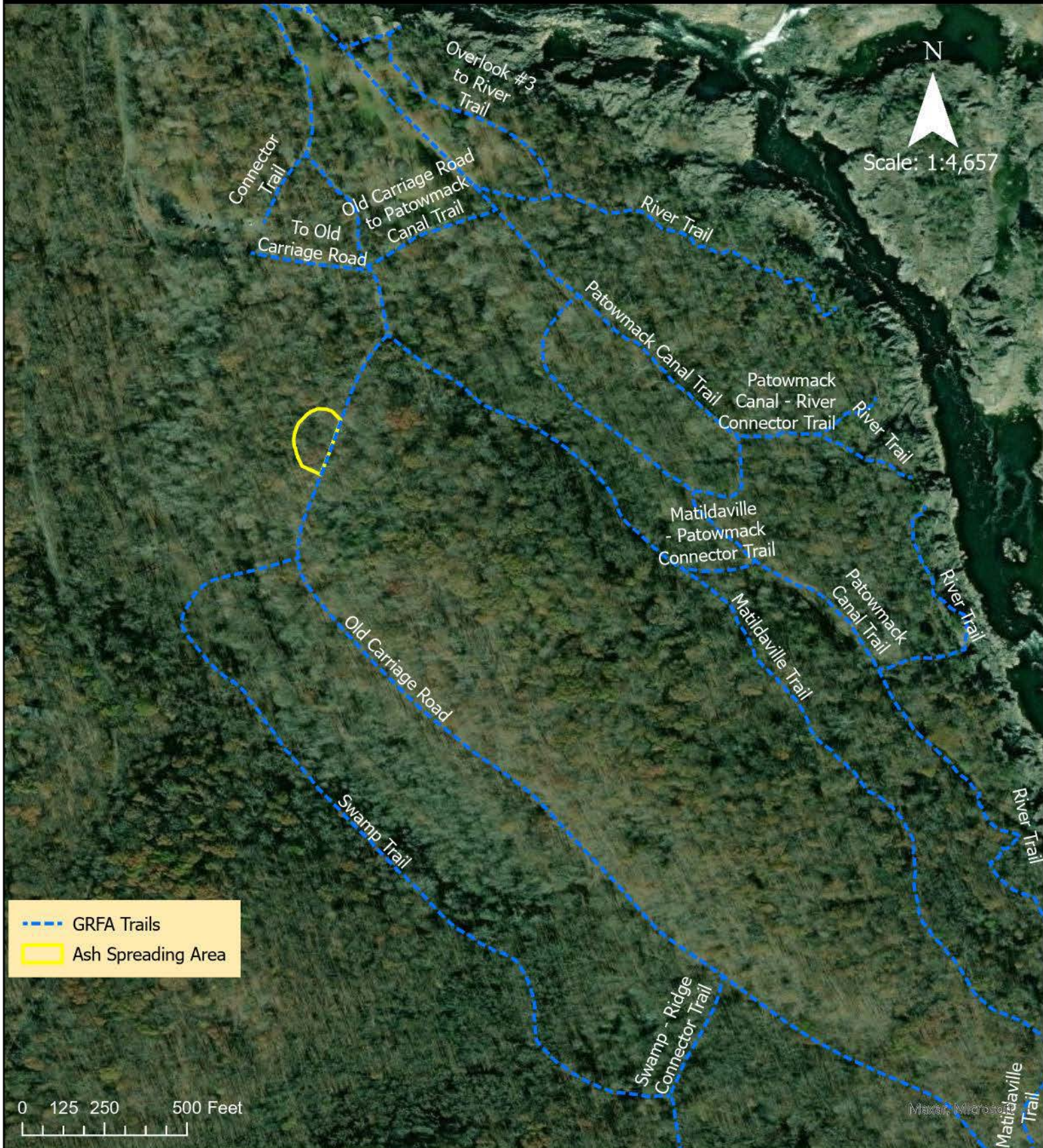
This letter serves as the permit required by the citation reference above. Instruction regarding location and notification will serve as the terms and conditions required by the citation. This letter or a copy thereof must be in the possession of at least one member of the party when human ashes are scattered in the park.

Date of call: _____

Permit Number: _____

George Washington Memorial Parkway Great Falls Ash Spreading Area Overview

U.S. Department of the Interior
National Park Service



--- GRFA Trails
Ash Spreading Area

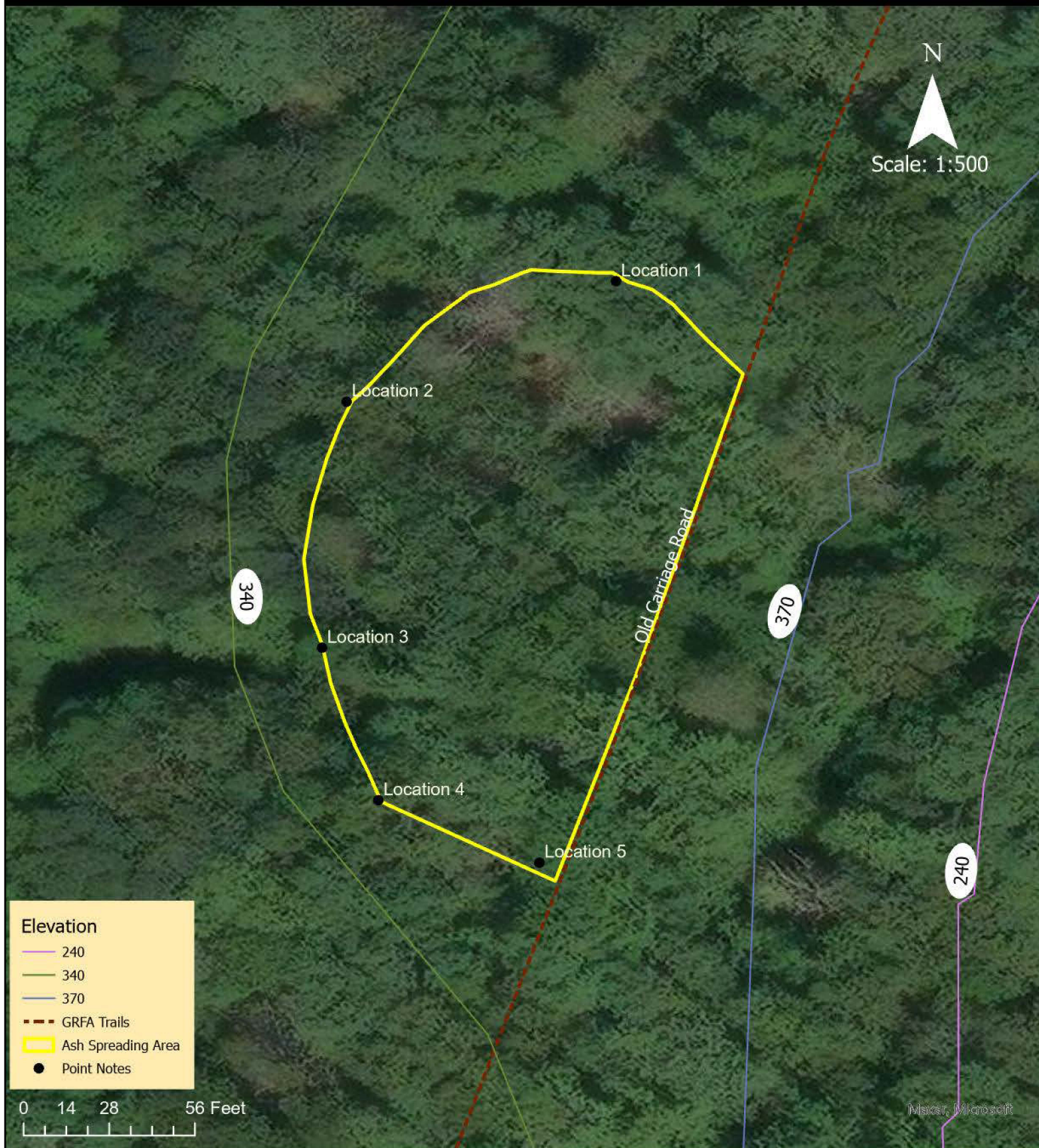
Path: C:
\\GIS\\Projects\\CompendiumMaps\\CompendiumMaps.aprx
Map: AshSpreading
Layout: Great Falls Ash Spreading Area Overview

Produced by George Washington Memorial Parkway
Christy McManus
The National Park Service does not assume responsibility
for information accuracy, precision, or completeness as
displayed on this map.

Map Projection Transvers Mercator
UTM Coordinate System, Zone 18N
Datum: WGS84
10/25/2024 7:48 AM

George Washington Memorial Parkway Great Falls Ash Spreading Area

U.S. Department of the Interior
National Park Service



Path: C:
\\GIS\\Projects\\CompendiumMaps\\CompendiumMaps.aprx
Map: AshSpreading
Layout: Great Falls Ash Spreading Area

Produced by George Washington Memorial Parkway
Christy McManus
The National Park Service does not assume responsibility
for information accuracy, precision, or completeness as
displayed on this map.

Map Projection Transvers Mercator
UTM Coordinate System, Zone 18N
Datum: WGS84
10/22/2024 10:33 AM