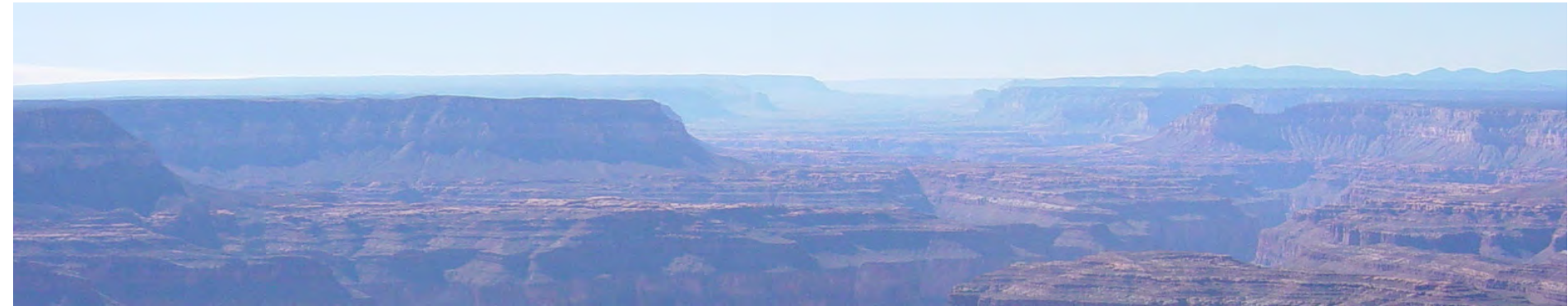


Grand Canyon Backcountry Information Center



2016 Statistics and 2000-2016 Summary

-by Steve Sullivan

Calendar Years 2000 to 2016 Backcountry Use Statistics

	2000	2001	2002	2003	2004	2005	2006	2007	2008	2009	2010	2011	2012	2013	2014	2015	2016
User-Nights	88499	91375	91657	91477	89880	89049	84272	86369	87551	91739	90058	92033	94278	88029	94057	98007	97141
Permits	11646	11837	12015	11943	11370	11067	11085	11011	11480	12087	11657	11775	12233	11269	12469	13288	13809
People	36675	37465	37575	37537	36513	35871	34817	35219	36539	38301	37425	37994	39075	36366	39267	41268	42316
Group-Nights	26544	27485	27595	27771	26583	26012	25613	25735	26162	27773	27034	27522	28138	26149	28359	30053	30294
Stock	54	52	42	93	63	46	35	7	32	42	65	54	29	25	32	75	90
CUA User-Nights	2356	2275	2655	2240	2478	2916	3120	3850	5722	6434	6658	7922	8545	8640	9467	9992	9825
CUA Permits	162	192	189	185	224	257	249	298	454	480	482	581	614	593	632	650	650
CUA People	874	919	912	845	1033	1174	1233	1500	2251	2376	2450	2940	3104	3144	3413	3533	3451
CUA Group_Nights	413	467	520	470	538	622	612	766	1151	1256	1240	1522	1632	1576	1705	1824	1810

Backcountry Permittees in 2016

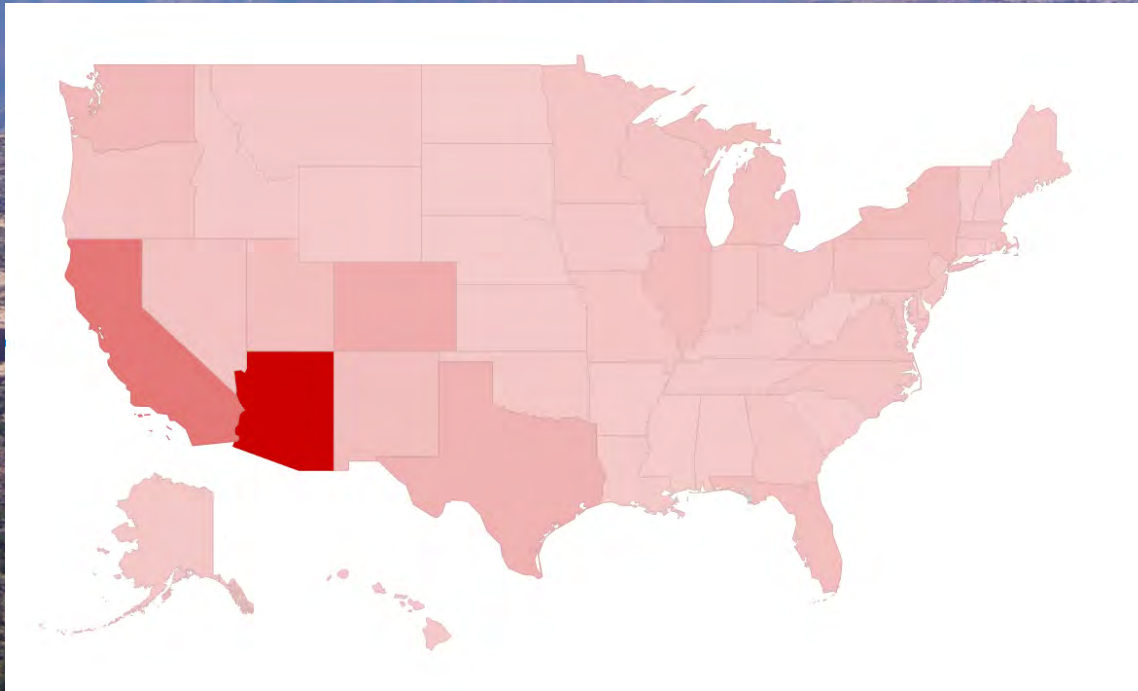
Country	Permits	People
USA	12229	38553
CANADA	471	1160
GERMANY	301	704
FRANCE	128	304
UNITED KINGDOM	111	315
SWITZERLAND	62	130
AUSTRALIA	56	120
BELGIUM	54	123
NETHERLANDS	50	102
SPAIN	37	87
CZECH REPUBLIC	36	73
ITALY	34	78
ISRAEL	25	51
DENMARK	24	68
POLAND	21	57
NEW ZEALAND	21	42
AUSTRIA	18	45
MEXICO	14	35
SWEDEN	11	26
FINLAND	8	20
JAPAN	8	15
RUSSIA	8	15
BRAZIL	7	16
CHINA	7	9
NORWAY	5	12
SLOVAKIA	5	13
PORTUGAL	5	9



Country	Permits	People
HUNGARY	4	10
SOUTH KOREA	4	15
ARGENTINA	4	6
IRELAND	3	8
GREECE	3	9
TAIWAN	3	3
URUGUAY	2	6
SINGAPORE	2	4
LITHUANIA	2	4
CHILE	2	3
COSTA RICA	2	9
LATVIA	2	4
SOUTH AFRICA	2	2
ROMANIA	1	1
COOK	1	4
BOLIVIA	1	7
UKRAINE	1	1
VIET NAM	1	1
BELARUS	1	2
GUADALUPE	1	2
KOREA	1	2
PANAMA	1	2
THAILAND	1	2
ESTONIA	1	2
ICELAND	1	4
LUXEMBOURG	1	4
SERBIA	1	1
TAHITI	1	2
GUATEMALA	1	4
PERU	1	4
TURKEY	1	6

USA Backcountry Permittees in 2016

State	permits	people
AZ	3797	13323
CA	1631	5267
CO	611	1822
TX	551	1742
UT	339	1235
WA	327	998
IL	295	835
NY	285	709
NM	253	859
OH	237	638
FL	225	610
MI	217	655
PA	214	606
OR	212	562
MA	212	554
MN	187	530
NV	184	575
VA	167	453
WI	166	488
NC	163	474
GA	136	377
TN	135	332
MO	134	413
NJ	126	355
MD	124	297
IN	119	367



state	permits	people
OK	97	293
IA	85	260
CT	77	228
ID	75	231
AK	70	164
KS	70	251
LA	68	187
MT	67	192
AL	55	169
KY	54	162
SC	53	145
WY	48	143
NH	47	156
AR	47	154
NE	43	126
VT	42	123
DC	38	102
ME	37	79
RI	19	64
HI	17	41
ND	15	47
SD	14	32
MS	14	41
WV	13	43
DE	10	27
PR	3	7
KT	2	5
VI	2	5

Backcountry Permittees by Origin

(based on 2016 Backcountry Permits)

All BC Permits

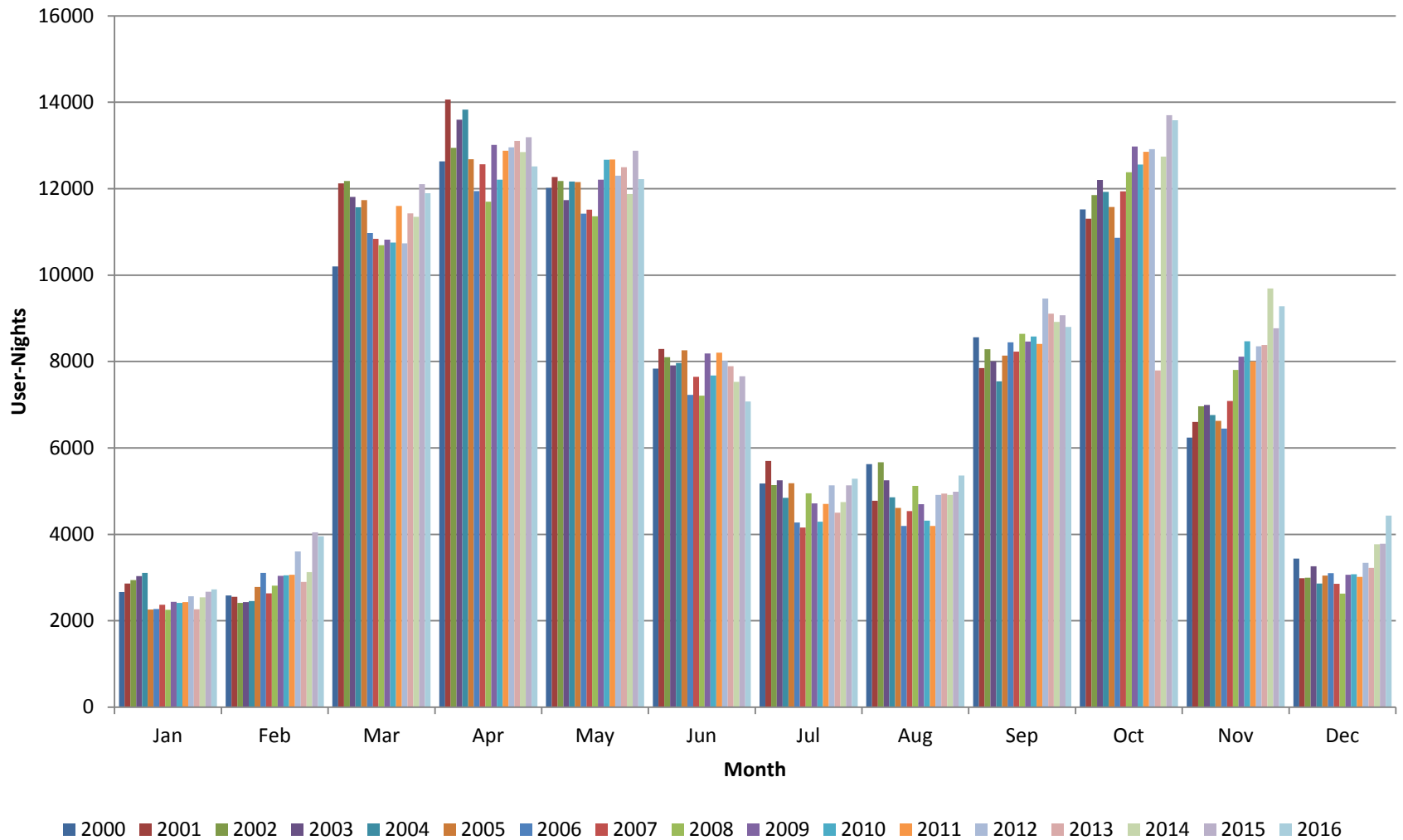
USA Nationality

Foreign Nationality



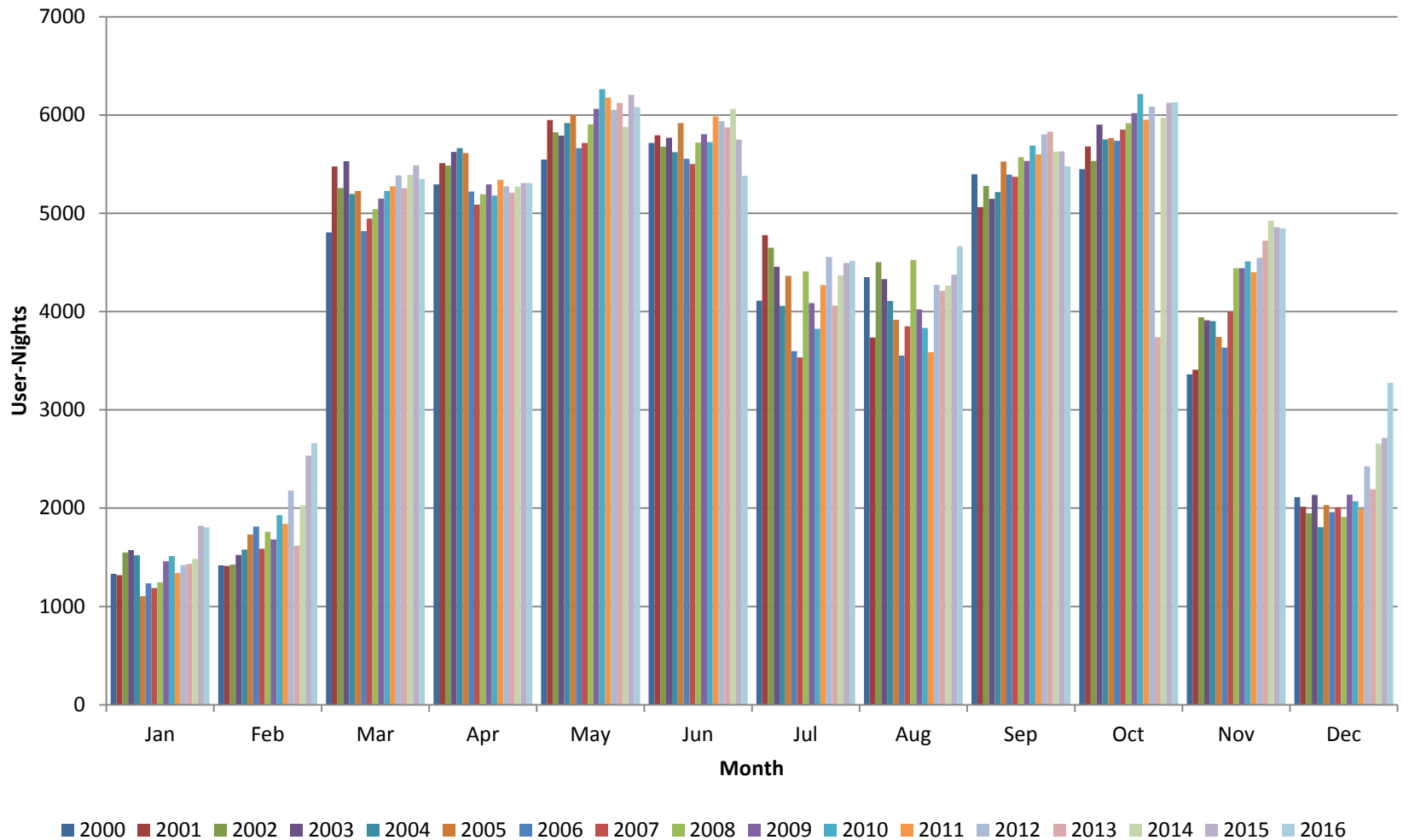
Backcountry Use Trends, 2000-2016

Corridor + Non-Corridor

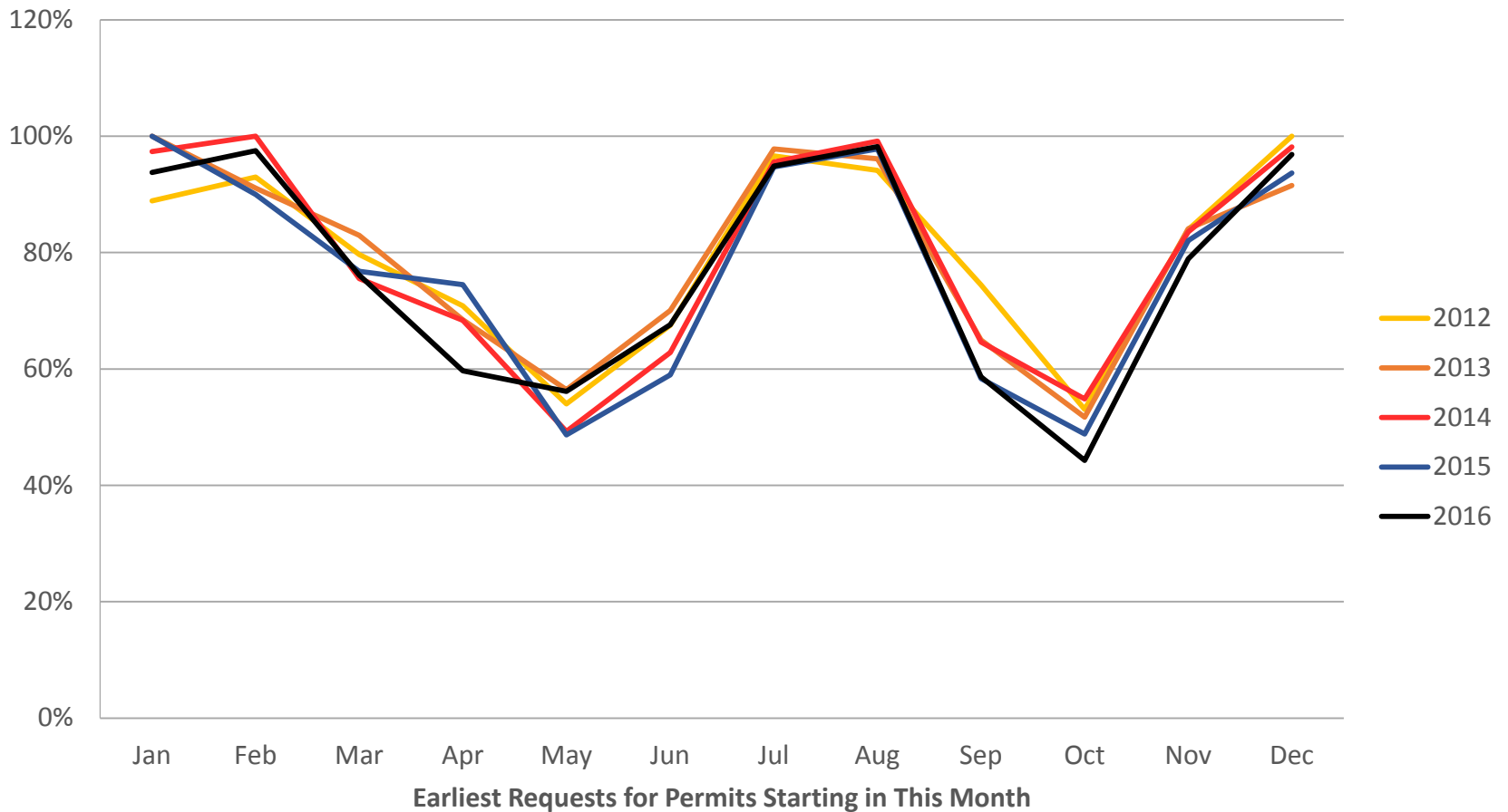


Backcountry Use Trends, 2000-2016

Corridor



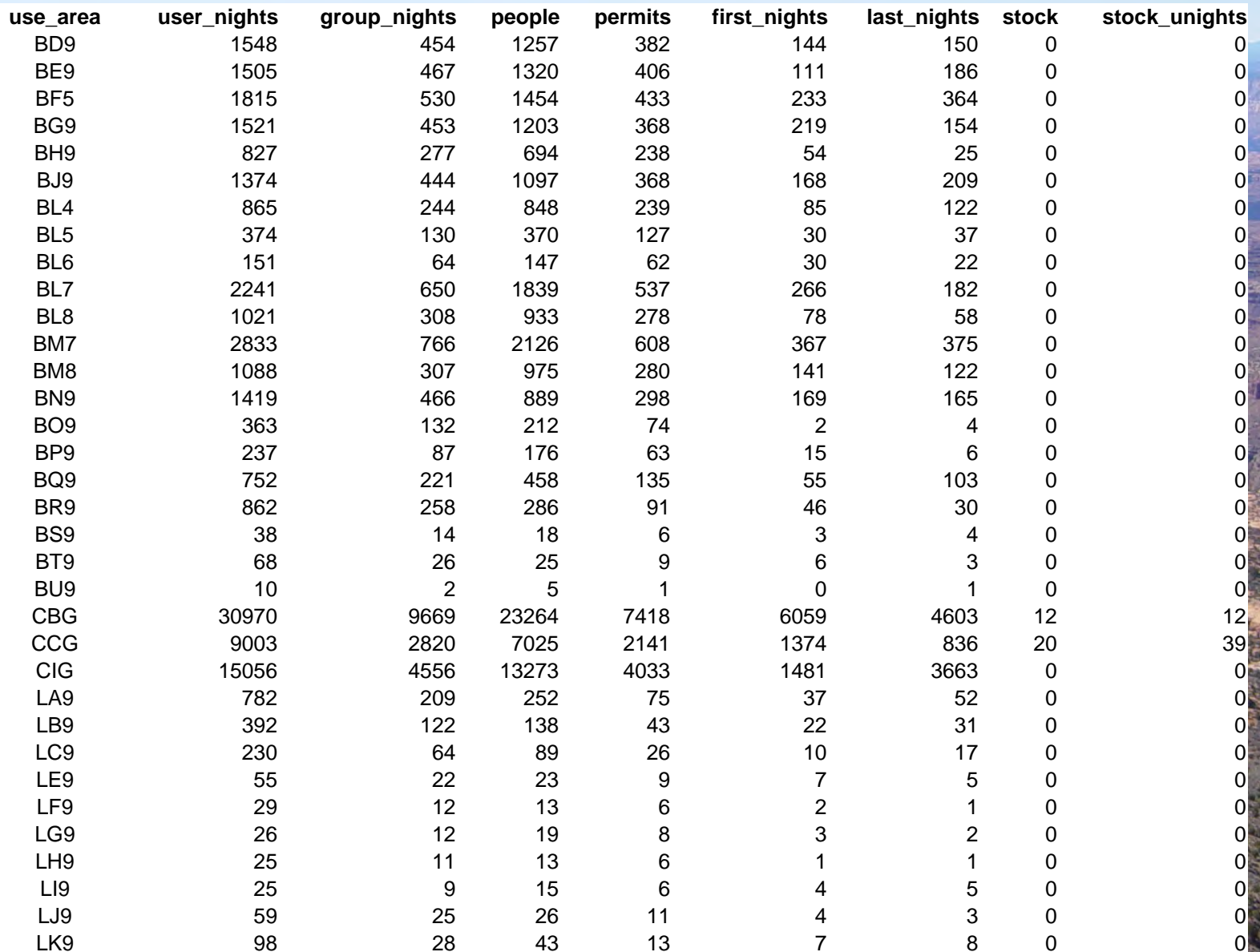
Success Rates for Backcountry Requests Submitted On Earliest Allowed Date



Use Area Details for 2016

The Grand Canyon backcountry is divided into use areas. Each use area has an overnight capacity based upon the size of the area, the number of suitable and available campsites, its ecological sensitivity, its management zoning, and its use history. Use areas range in size from several hundred acres to several thousand acres. (<https://www.nps.gov/grca/planyourvisit/campsite-information.htm>)

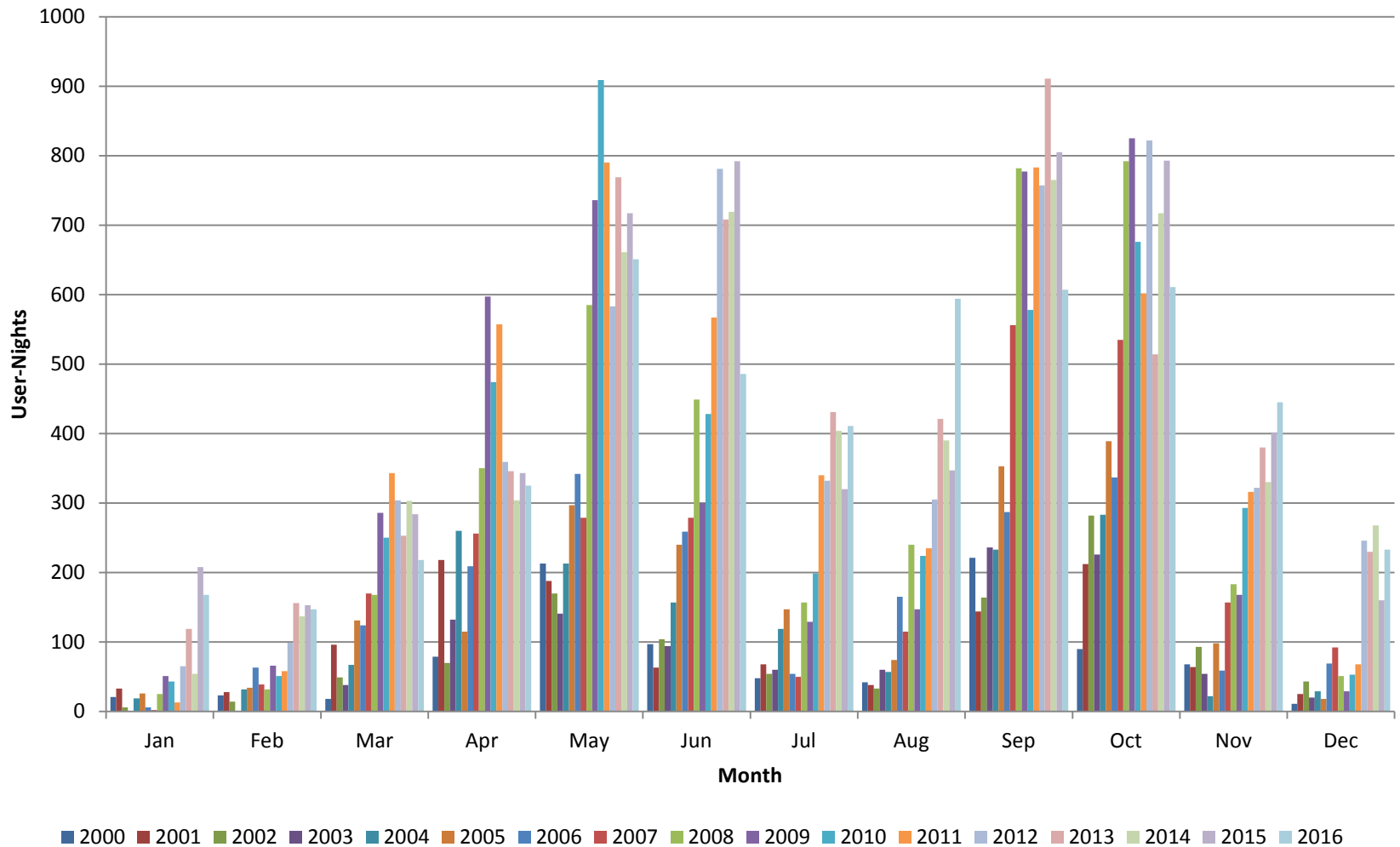
use_area	user_nights	group_nights	people	permits	first_nights	last_nights	stock	stock_nights
AA9	14	2	14	2	2	1	0	0
AB0	136	25	77	18	16	15	0	0
AB9	51	17	34	11	5	8	0	0
AC9	288	67	123	31	27	25	0	0
AD9	92	34	37	12	5	5	0	0
AE9	687	238	260	95	82	72	0	0
AF9	212	87	95	46	13	6	0	0
AG9	86	40	55	28	6	6	0	0
AH9	81	43	46	24	5	5	0	0
AJ9	63	35	46	25	8	9	0	0
AK9	1625	588	869	326	140	122	0	0
AL9	18	3	6	1	1	1	0	0
AM9	544	139	433	113	46	49	0	0
AN9	40	17	31	11	8	7	0	0
AP9	293	127	147	64	41	35	0	0
AQ9	126	70	57	28	8	9	0	0
AR9	282	80	91	32	12	17	0	0
AS9	525	164	181	62	29	34	0	0
AT9	110	43	71	27	15	17	0	0
AU9	127	62	55	23	5	6	0	0
AV9	146	44	89	29	11	5	0	0
AW7	938	250	770	205	91	34	0	0
AW8	510	115	486	110	4	0	0	0
AX7	925	256	781	214	33	47	0	0
AY9	1130	303	797	208	123	173	0	0
AZ9	128	43	81	30	5	9	0	0
BA9	978	357	569	210	83	50	0	0
BB9	1965	623	1419	449	378	212	0	0
BC9	1294	410	961	304	43	33	0	0



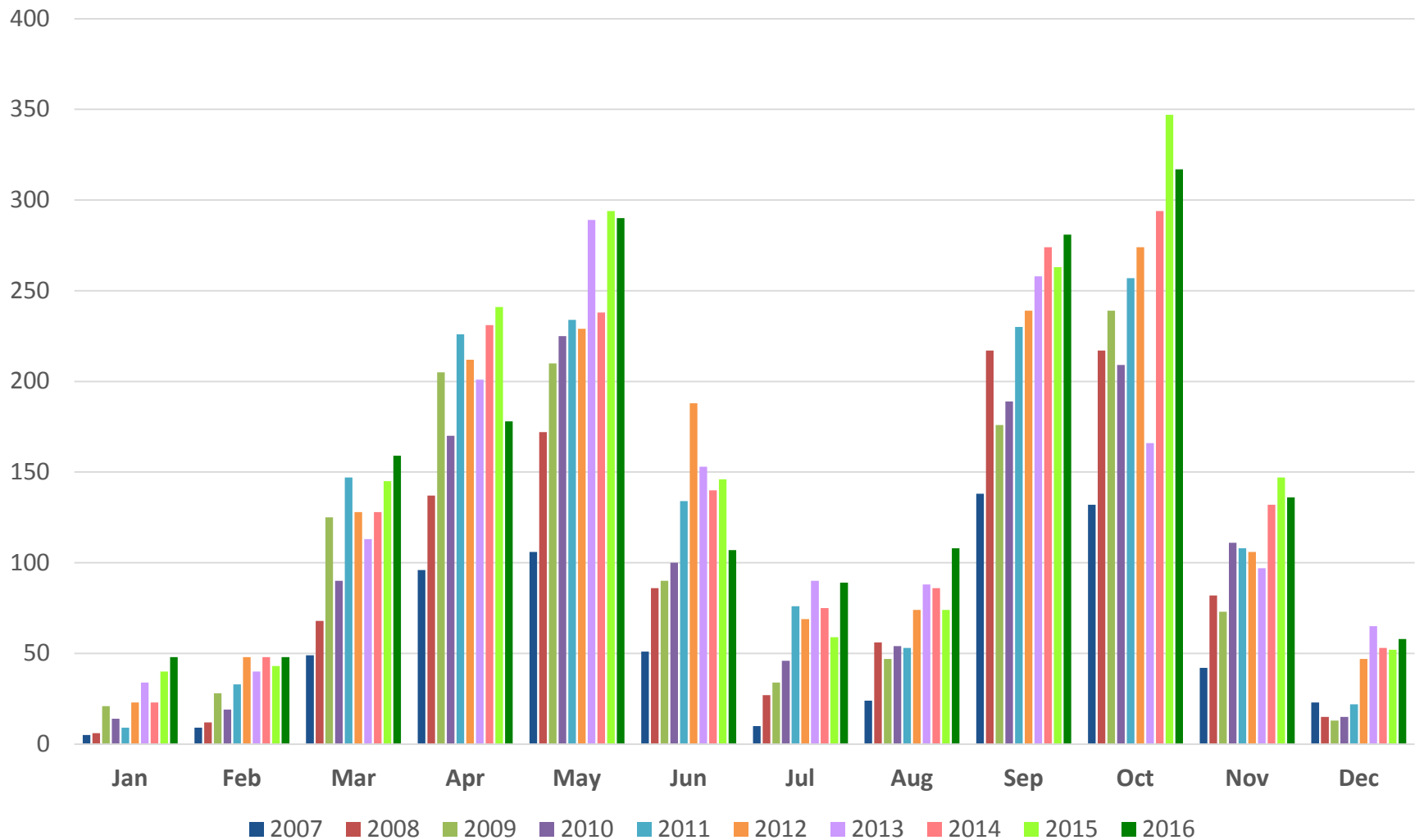
use_area	user_nights	group_nights	people	permits	first_nights	last_nights	stock	stock_unights
BD9	1548	454	1257	382	144	150	0	0
BE9	1505	467	1320	406	111	186	0	0
BF5	1815	530	1454	433	233	364	0	0
BG9	1521	453	1203	368	219	154	0	0
BH9	827	277	694	238	54	25	0	0
BJ9	1374	444	1097	368	168	209	0	0
BL4	865	244	848	239	85	122	0	0
BL5	374	130	370	127	30	37	0	0
BL6	151	64	147	62	30	22	0	0
BL7	2241	650	1839	537	266	182	0	0
BL8	1021	308	933	278	78	58	0	0
BM7	2833	766	2126	608	367	375	0	0
BM8	1088	307	975	280	141	122	0	0
BN9	1419	466	889	298	169	165	0	0
BO9	363	132	212	74	2	4	0	0
BP9	237	87	176	63	15	6	0	0
BQ9	752	221	458	135	55	103	0	0
BR9	862	258	286	91	46	30	0	0
BS9	38	14	18	6	3	4	0	0
BT9	68	26	25	9	6	3	0	0
BU9	10	2	5	1	0	1	0	0
CBG	30970	9669	23264	7418	6059	4603	12	12
CCG	9003	2820	7025	2141	1374	836	20	39
CIG	15056	4556	13273	4033	1481	3663	0	0
LA9	782	209	252	75	37	52	0	0
LB9	392	122	138	43	22	31	0	0
LC9	230	64	89	26	10	17	0	0
LE9	55	22	23	9	7	5	0	0
LF9	29	12	13	6	2	1	0	0
LG9	26	12	19	8	3	2	0	0
LH9	25	11	13	6	1	1	0	0
LI9	25	9	15	6	4	5	0	0
LJ9	59	25	26	11	4	3	0	0
LK9	98	28	43	13	7	8	0	0

use_area	user_nights	group_nights	people	permits	first_nights	last_nights	stock	stock_unights
LL9	14	6	12	5	1	4	0	0
NA0	35	15	29	13	8	10	0	0
NA1	238	95	211	88	76	70	0	0
NB9	15	7	15	7	4	5	0	0
NC9	33	17	31	15	9	8	0	0
NCG	208	104	172	83	34	34	0	0
ND9	27	18	23	14	7	10	0	0
NF9	253	112	220	102	92	87	0	0
NG9	37	13	17	8	6	6	0	0
NH1	599	232	465	186	160	165	0	0
NJ0	63	30	50	23	9	7	0	0
NJ1	155	55	77	30	25	26	0	0
NJ2	192	74	136	56	41	32	0	0
NK9	219	55	144	37	26	24	0	0
NL9	106	32	67	22	18	6	0	0
NM9	3	1	3	1	1	1	0	0
NN9	15	5	12	4	1	2	0	0
NRH	253	54	88	18	15	17	85	244
SA9	114	57	63	31	30	31	0	0
SB9	9	5	8	4	4	2	0	0
SC9	5	5	4	4	4	4	0	0
SE0	16	3	16	3	3	1	0	0
SE1	51	17	48	16	12	13	0	0
SE2	138	46	115	39	39	18	0	0
SE3	146	52	126	44	43	18	0	0
SF9	73	22	47	13	8	12	0	0
SG9	56	19	46	13	11	11	0	0
SH9	22	5	14	3	3	3	0	0
TCG	2755	929	1679	561	543	530	0	0
YUR	215	68	169	54	8	8	0	0
TOTAL:	97141	30294	73313	23033	13719	13726	117	295

Backcountry Commercial Use in Corridor, 2000-2016



Backcountry Commercial Use, 2007-2016 By Group-Night



Questions?

Steve Sullivan
Steve_Sullivan@nps.gov