



**Golden Gate National Recreation Area,  
Point Reyes National Seashore, and  
San Francisco Maritime National Historical Park  
Public Scoping Meeting**

**August 16, 2011**



---

## Meeting Agenda

---

1. Introduction and Purpose
2. National Parks Air Tour Management Act of 2000
3. Air Tour Management Act Process
4. Current Conditions at the Parks
5. Public Involvement Opportunities and How to Provide Comments
6. Questions and Answers



---

## Meeting Purpose

---

- ◆ To describe the Air Tour Management Plan (ATMP) development and environmental review process
- ◆ To provide an opportunity to the public to formally provide input on the range of actions, alternatives, and impacts to be considered in the ATMP planning and environmental analysis processes



---

## Meeting Structure

---

- ◆ ATMP Presentation
- ◆ How to provide your comments
- ◆ Open House
  - One-on-one discussion with FAA, NPS, and Volpe personnel
  - Additional information available (maps, brochures)



---

## Meeting Handouts

---

- ◆ Please remember to sign the attendance sheet
- ◆ Materials available near the entrance
  - Public comment cards
  - ATMP brochures



---

## National Parks Air Tour Management Act of 2000 (NPATMA)

---

- ◆ National Parks Air Tour Management Act of 2000
  - **Objective:** “to develop acceptable and effective measures to mitigate or prevent the significant adverse impacts, if any, of commercial air tour operations upon the natural and cultural resources, visitor experiences, and tribal lands.”
  - **Applies to:**
    - Air tours within ½ mile of park
    - Over tribal lands within or abutting park
    - 5000 feet altitude or less above ground level (AGL)
- ◆ An ATMP establishes conditions for the conduct of commercial air tours



---

## National Parks Air Tour Management Act of 2000 (NPATMA)

---

- ◆ Congress found that:
  - FAA has sole authority to control airspace over the United States and FAA has the authority to preserve, protect, and enhance the environment by minimizing, mitigating, or preventing the adverse effects of overflights on public and tribal lands.
  - NPS has the responsibility of conserving the scenery, natural and historic objects, and wildlife in national parks and of providing for the enjoyment of the national parks in ways that leave the national parks unimpaired for future generations.







---

## ATMP Program Nationwide

---

- **FAA and NPS are currently working on ATMPs for other parks:**
  - Mount Rushmore National Memorial
  - Badlands National Park
  - Hawaii Volcanoes National Park
  - Haleakala National Park
  - Death Valley National Park
  - Mount Rainier National Park
  - Petrified Forest National Park
  - Big Cypress National Preserve



---

## National Environmental Policy Act Compliance

---

- ♦ ATMP must comply with the National Environmental Policy Act (NEPA)
  - A combined Environmental Assessment (EA) will be prepared for both:
    - Golden National Recreation Area (GGNRA), and Point Reyes National Seashore (the Seashore). It will include Muir Woods National Historic Monument and Fort Point National Historic Site (both directly managed by GGNRA) as well as San Francisco Maritime National Historic Park (SF Maritime NHP) an independently managed national park unit adjacent to GGNRA.
- ♦ Agency Cooperation
  - FAA: Lead NEPA Agency; NPS: Cooperating NEPA Agency
  - FAA and NPS must sign the NEPA environmental document and record of decision for the ATMP
  - Tribe – If abutting tribal lands, tribe must be solicited as cooperating agency



---

## ATMP/NEPA Process – Planning and Environmental Analysis

---

- ◆ Scoping process
- ◆ Alternatives
- ◆ Section 106 of the National Historic Preservation Act and tribal matters
- ◆ Section 7 consultation with US Fish & Wildlife Service
- ◆ Environmental analysis
  - FAA Order 1050.1E
  - NPS DO#12
- ◆ Draft and Final NEPA document
- ◆ Decision



## ATMP Program: ATMP Process

*We are at this step*



### **Scoping**

- Public and agency input requested
- Issues identified

### **Alternatives Development**

- Alternatives identified for evaluation
- Public and agency input requested

### **Draft Environmental Assessment & Draft ATMP**

- Evaluates impacts to environmental and community resources
- Public and agency input requested

### **Final Environmental Assessment & Final ATMP**

- Preferred Alternative identified, including flight routes and operating parameters

### **Record of Decision**

- Documents Selected Alternative

### **FAA Rulemaking**

- Establishes enforceable rules
- Public and agency input requested



---

## ATMP Process

---

- ♦ ATMP is to define operating parameters for commercial air tours. The ATMP:
    - May prohibit commercial air tour operations in whole or in part
    - May establish conditions for the conduct of air tour operations including routes, altitudes, time-of-day restrictions, restrictions for particular events, maximum number of flights, etc.
    - Shall apply to all commercial air tour operations within ½ mile outside the boundary of a national park
    - Shall include incentives for adoption of quiet aircraft technology
    - Shall provide for the allocation of opportunities to conduct tours when the ATMP limits the number of operations
    - Shall justify and document the need for measures taken pursuant to the items above
-



## ATMP Program Process: Interim Operating Authority

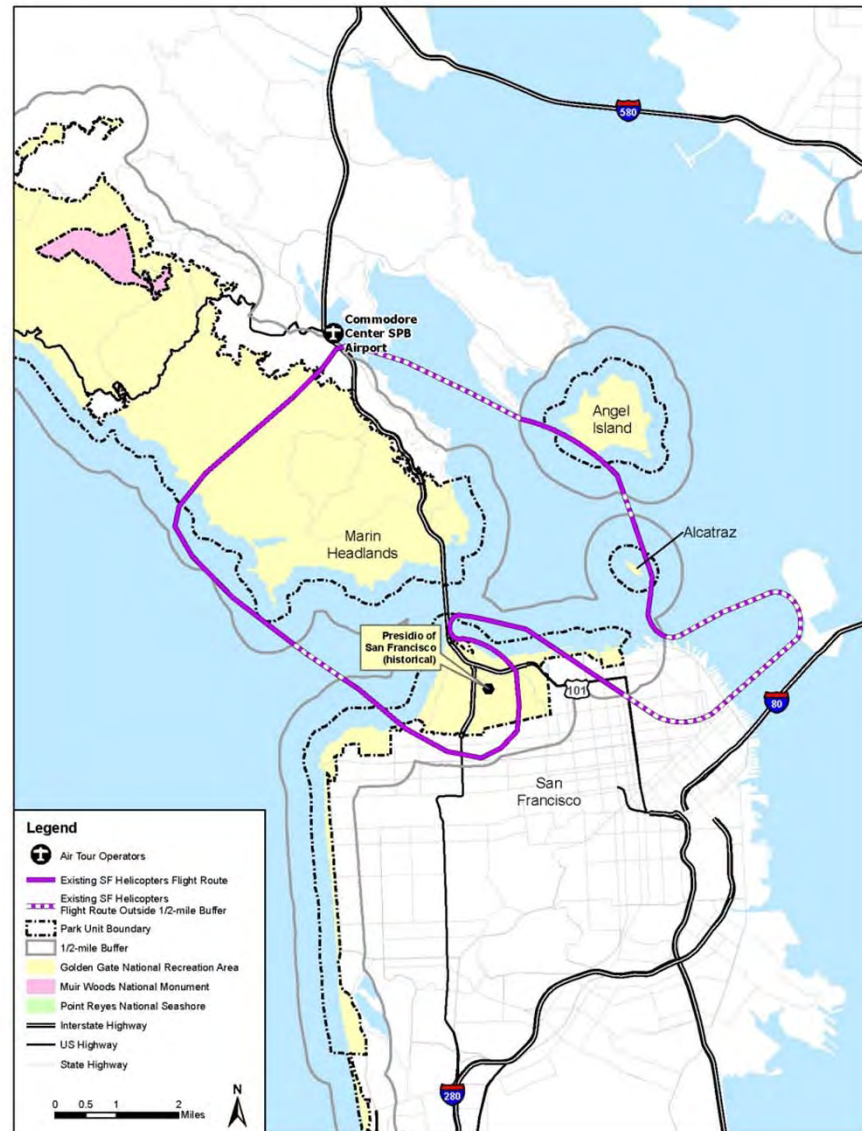
Interim Operating Authority at GGNRA, SF Maritime NHP, and the Seashore

Existing Operators with Interim Operating Authority	Flights per year under Interim Operating Authority		
	GGNRA	SF Maritime NHP	the Seashore
San Francisco Helicopter Tours	2,900	2,900	2,900
San Francisco Seaplane Tours	2,190	2,190	2,190



## Current Conditions at Golden Gate National Recreation Area

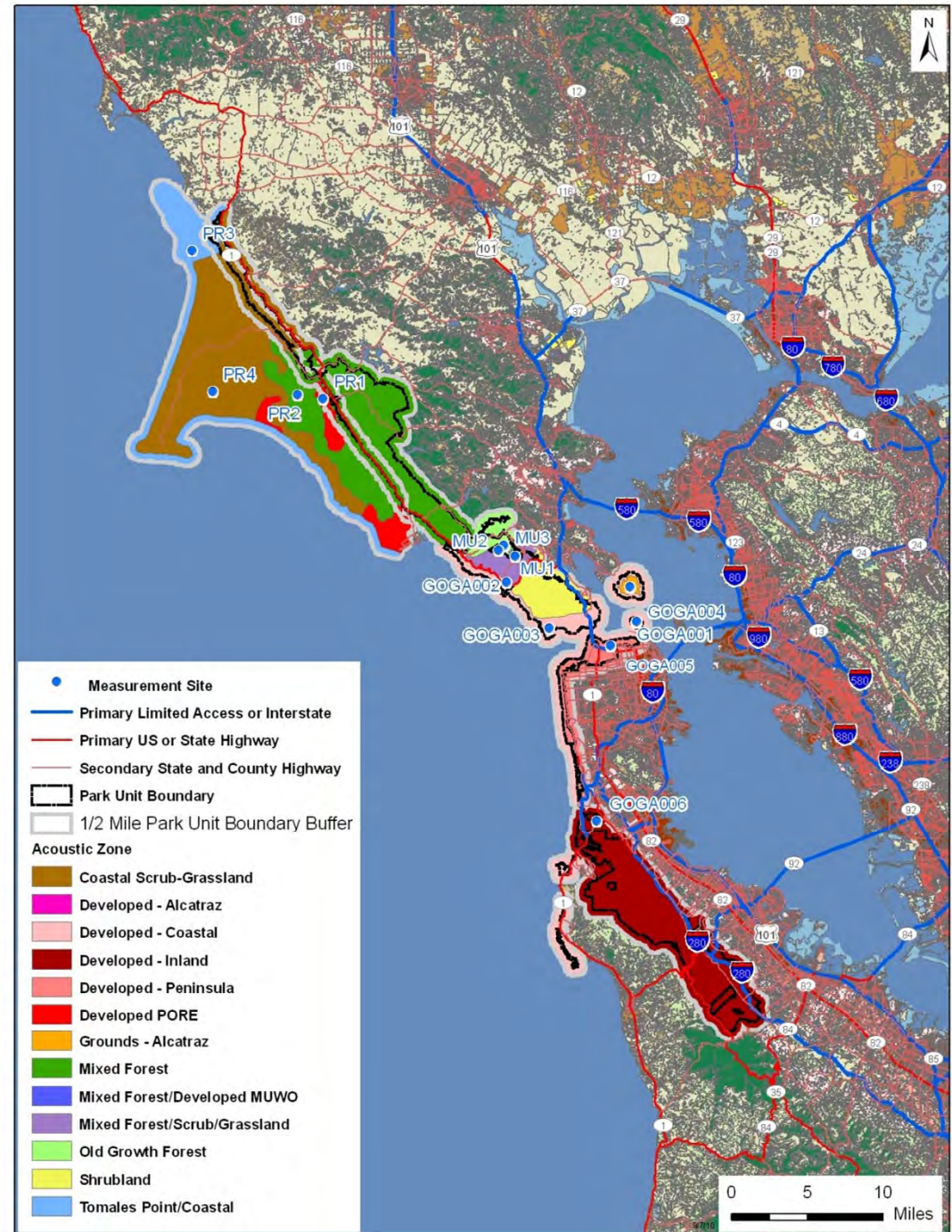
- ◆ 2 existing commercial air tour operators







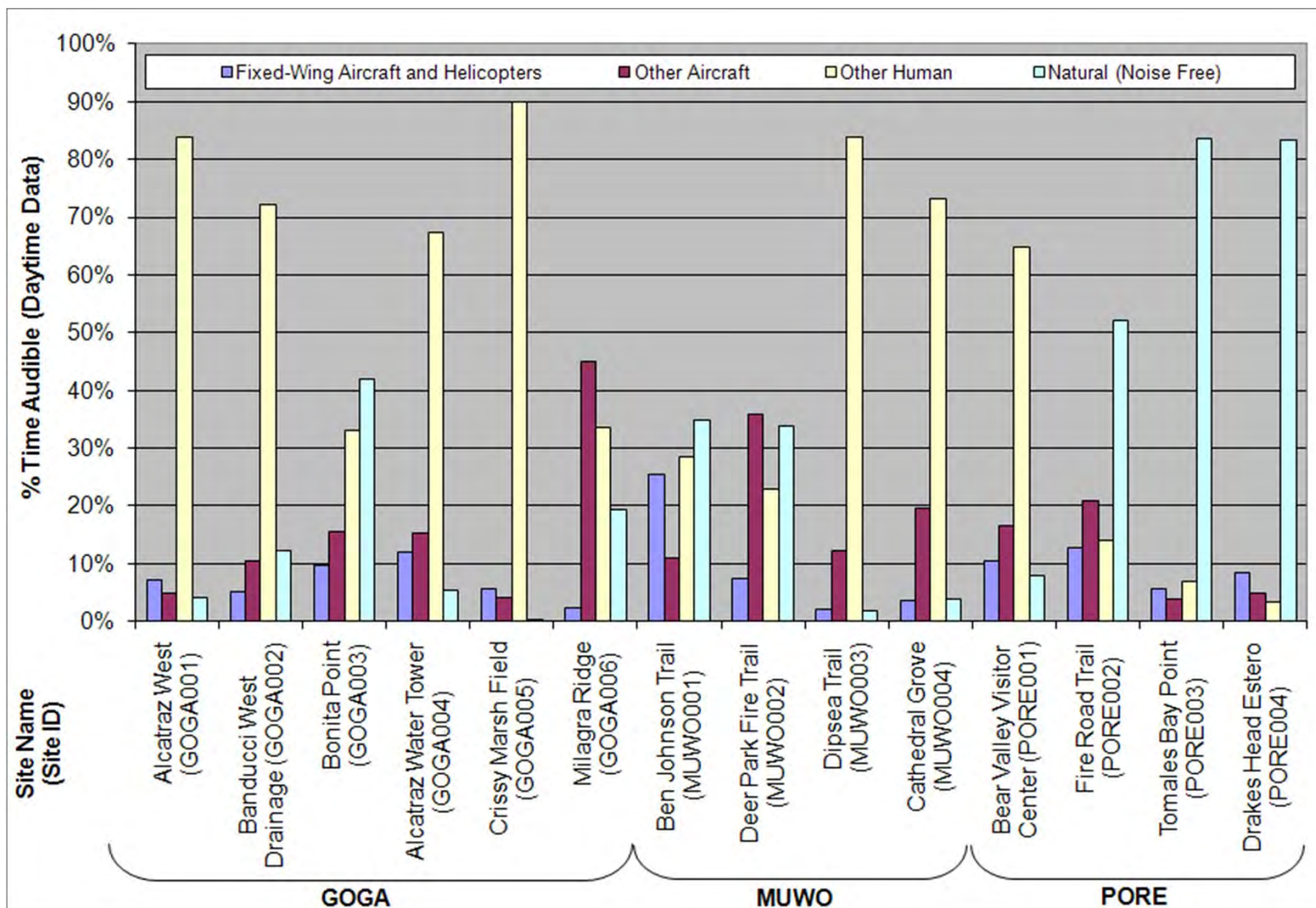
# **Soundscape Monitoring at Golden Gate National Recreation Area, Muir Woods National Monument, and Point Reyes National Seashore**





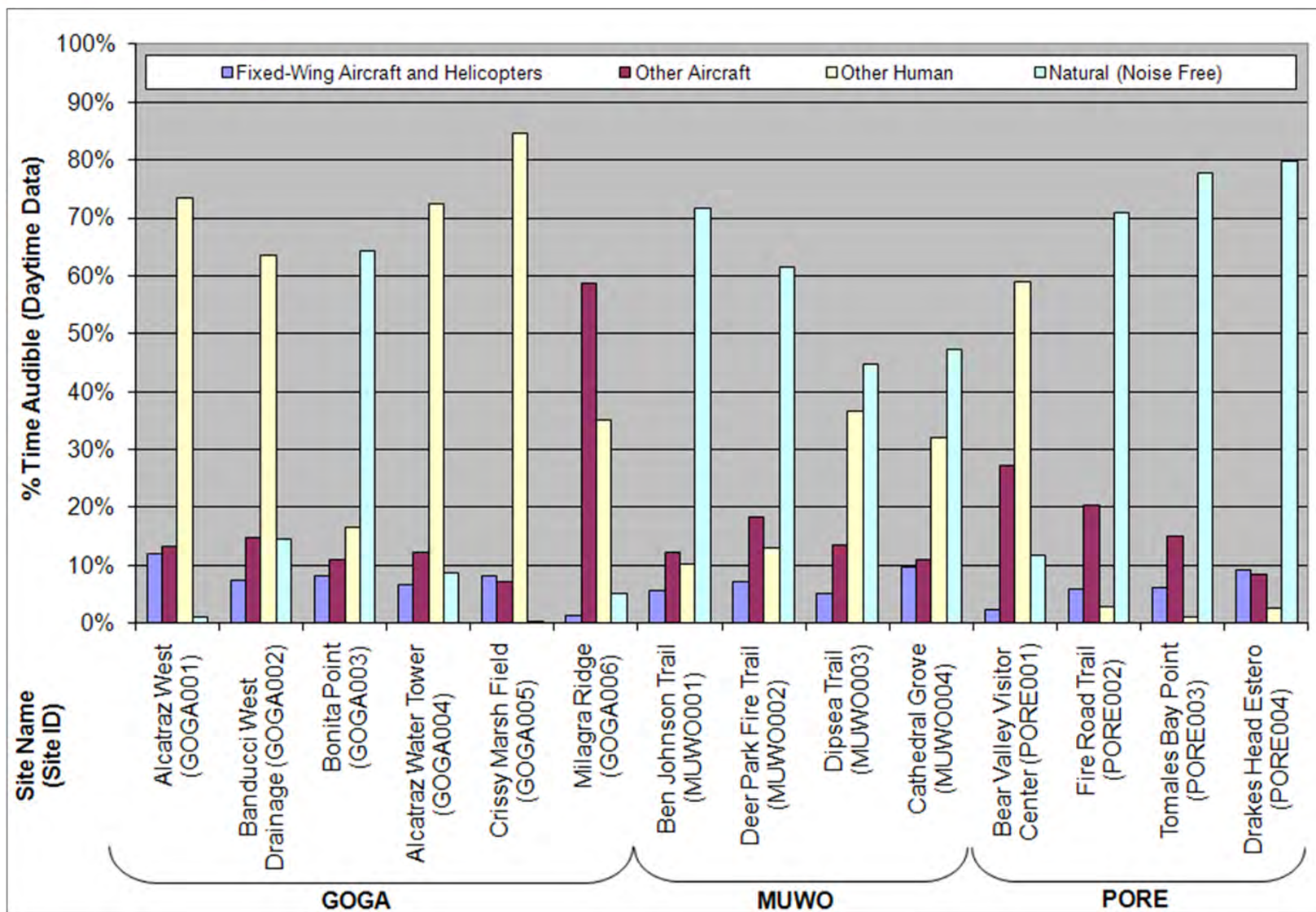


## Summer Audibility at Golden Gate, Muir Woods, and Point Reyes





## Winter Audibility at Golden Gate, Muir Woods, and Point Reyes





---

## Potential Impacts, as Identified by the FAA and NPS

---

- ◆ Noise impacts
- ◆ Impacts on visitor experience
- ◆ Impacts on cultural resources
- ◆ Impacts to wildlife
- ◆ Other important issues....?



---

## How to Provide Comments

---

Comments must be submitted by **September 28, 2011**

- Online:  
[http://parkplanning.nps.gov/BayArea\\_ATMP](http://parkplanning.nps.gov/BayArea_ATMP)
- Comment cards
- Mail: Keith Lusk, FAA  
P.O. Box 92007  
Los Angeles, CA 90009-2007

*\*\*Addresses provided on comment cards\*\**



---

## For More Information

---

- ♦ **A detailed scoping packet providing more information about the park units and ATMP process is available online at:**

[http://parkplanning.nps.gov/BayArea\\_ATMP](http://parkplanning.nps.gov/BayArea_ATMP)

Or

[www.faa.gov/about/office\\_org/headquarters\\_offices/arc/programs.air\\_tour\\_management\\_plan/](http://www.faa.gov/about/office_org/headquarters_offices/arc/programs.air_tour_management_plan/)

- ♦ For more information about the park units visit the NPS website at:

[www.nps.gov/goga](http://www.nps.gov/goga)

[www.nps.gov/safr](http://www.nps.gov/safr)

[www.nps.gov/pore](http://www.nps.gov/pore)

[www.nps.gov/muwo](http://www.nps.gov/muwo)