

# National Park Service



GMP Orientation Field Trip — Golden Gate National Recreation Area 2/28/05



# Park Sites



EXPERIENCE  
YOUR  
AMERICA

## San Mateo

- Phleger Estate
- San Francisco Watershed (Sawyer Camp & Fifield/Cahill)
- Rancho Corral de Tierra/ Devil's Slide
- Pedro Point
- Mori Point
- Milagra Ridge
- Sweeney Ridge / Cattle Hill

## San Francisco

- Fort Funston
- Ocean Beach
- Cliff House, Lands End & Sutro Park
- China Beach
- Presidio (including: Baker Beach, Fort Point & Crissy Field)
- Upper & Lower Fort Mason
- Alcatraz

## Marin County

- Fort Baker
- Marin Headlands
- Tennessee Valley
- Muir Beach
- Muir Beach Overlook & Slide Ranch
- Muir Woods
- Stinson Beach

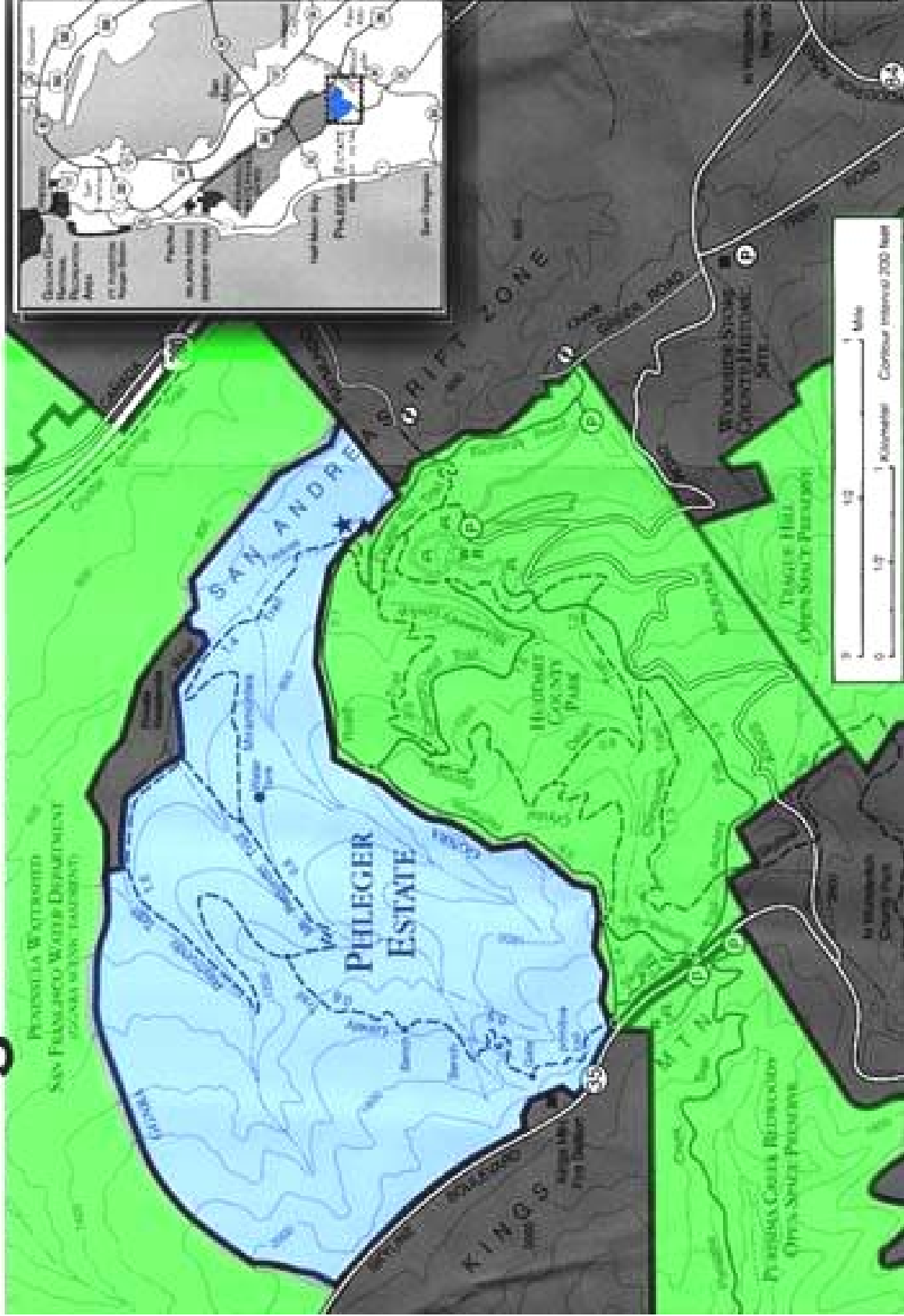
# San Mateo County



# Phleger Estate



## Phleger Estate Golden Gate Nat'l Recreation Area



Map Courtesy of SF Chronicle

# Phleger Estate



Parking at Huddart Park



Group use



Trailhead

# Phleger Estate



EXPERIENCE  
YOUR  
AMERICA

- Large site with dozens of trails and access through Huddart Park
- 50% Hikers/50% Equestrians
- Access management with San Mateo County
- Southernmost piece of 50 mile wildlife corridor
- Remnants of second-growth redwood forests, logging camps & mills that supplied San Francisco

Notes: \_\_\_\_\_  
\_\_\_\_\_  
\_\_\_\_\_  
\_\_\_\_\_  
\_\_\_\_\_

# SF Watershed: Sawyer Camp



Main entrance



Street parking

# SF Watershed



EXPERIENCE  
YOUR  
AMERICA

- Managed by SF Public Utilities Commission
- Two sites: Sawyer Camp Trail & Fifield/Cahill Ridge Trails
- Sawyer Camp
  - Highly established paved trail
  - Very high usage (runners, parent's with strollers, bicyclists)
  - Important part of bicycle corridor (bicycle Sundays on Canada Rd.)
  - Southern expansion hindered by frog habitat
- Fifield/Cahill docent-led only access
  - Home to some of the Bay Area's most intact native habitat, including old-growth Douglas Fir
  - Portola's Gate links to Sweeney Ridge and the monument commemorates the Bay Area discovery

Notes: \_\_\_\_\_

\_\_\_\_\_

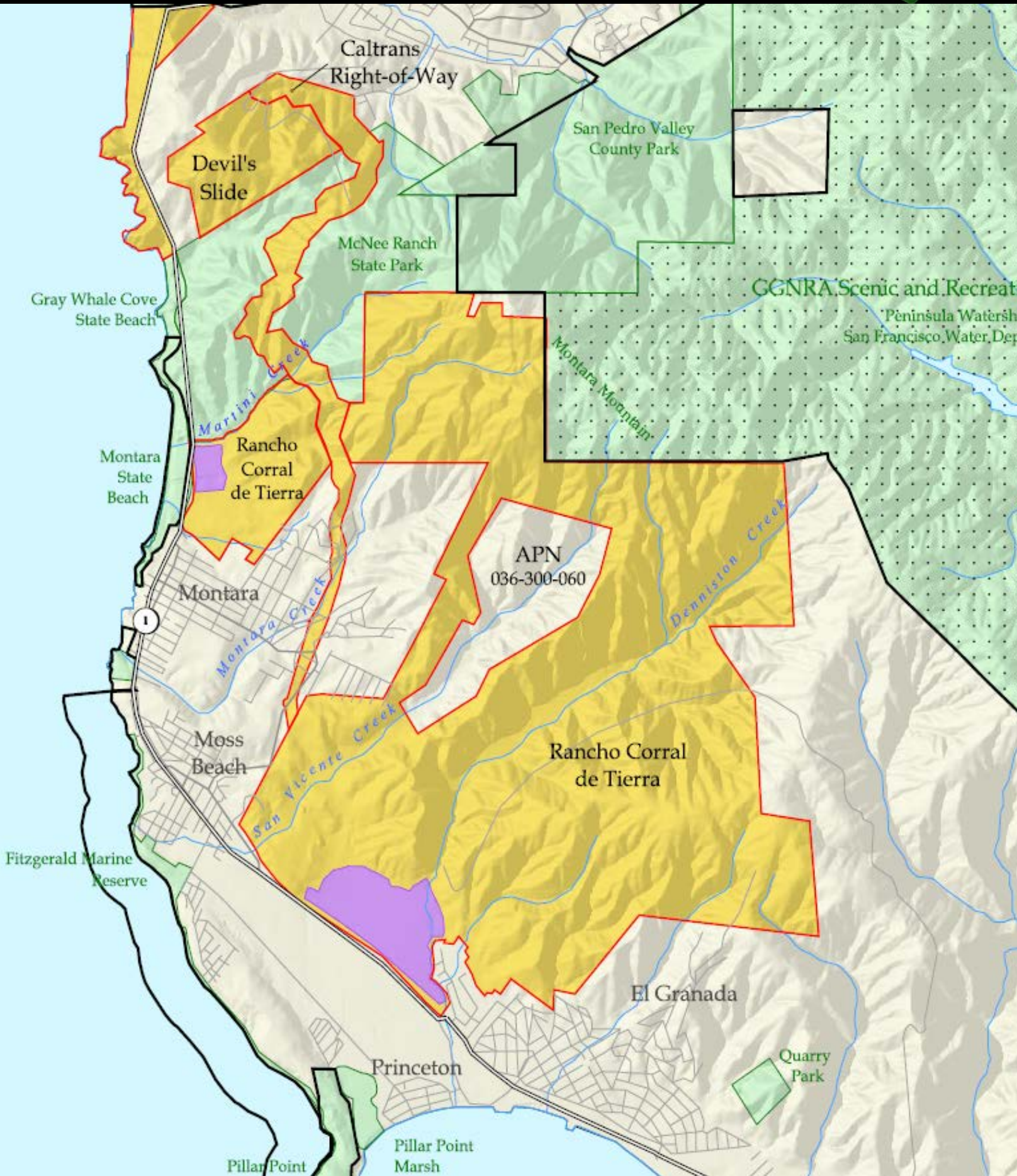
\_\_\_\_\_

\_\_\_\_\_

\_\_\_\_\_



# Rancho Corral de Tierra/ Devil's Slide



# Rancho Corral de Tierra/ Devil's Slide



Devil's Slide—southern beach portion



Devil's Slide—current road (to become path)

# Rancho Corral de Tierra/ Devil's Slide



EXPERIENCE  
YOUR  
AMERICA

- Devil's Slide: future site once tunnel is built abandoning section of HWY 1
- Rancho Corral de Tierra: non-contiguous lands currently administered by POST
- Corral has substantial illegal 4WD usage
- Both nascent park sites

Notes: \_\_\_\_\_  
\_\_\_\_\_  
\_\_\_\_\_  
\_\_\_\_\_

# Pedro Point



# Pedro Point



Aerial view with current access (behind Ace Hardware)



Current access – blocked



Aerial view looking south 13

# Pedro Point



EXPERIENCE  
YOUR  
AMERICA

- Adjacent to Devil's Slide with no formal entry
- Inappropriate use by local youth
- Nascent park site

Notes: \_\_\_\_\_

---

---

---

---

---

# Mori Point



# Mori Point



Aerial view



South entrance (at Moose Lodge)



View from north entrance



# Mori Point



EXPERIENCE  
YOUR  
AMERICA

- Well-established paths leading to beach
- Popular with local dog walkers & surfers
- Parking could become problematic
- Endangered species habitat: Garter Snake & Red Legged Frog
- Spanish-mined limestone quarry in 1700s to supply whitewash for Presidio buildings
- Wildflowers: Goldfields & Tiny Tips

Notes: \_\_\_\_\_

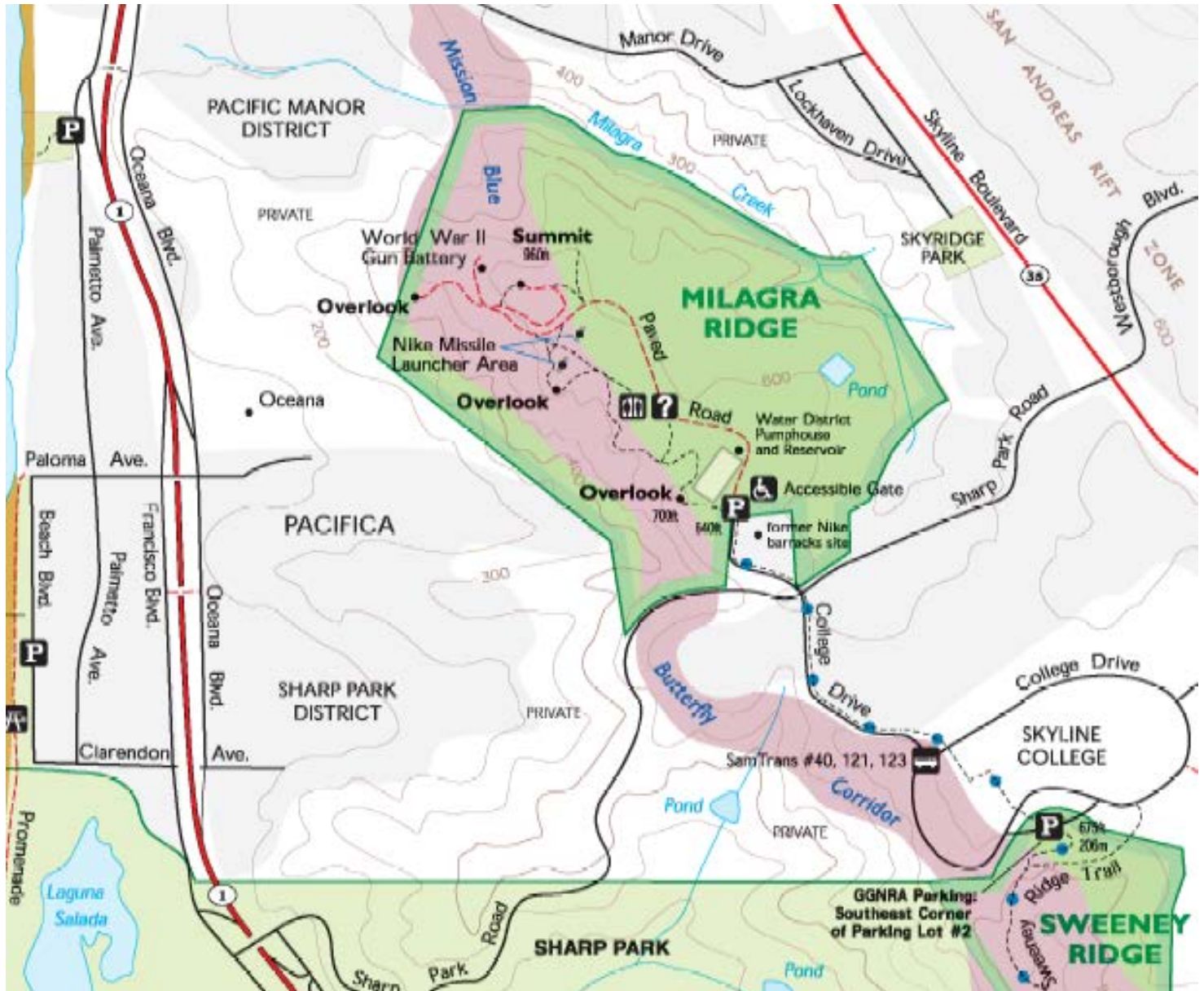
\_\_\_\_\_

\_\_\_\_\_

\_\_\_\_\_

\_\_\_\_\_

# Milagra Ridge



# Milagra Ridge



Trailhead



Parking



Trail



View

# Milagra Ridge



EXPERIENCE  
YOUR  
AMERICA

- Isolated hilltop site with excellent views
- Hikers & dog walkers
- Parking (6-8 spots) is ridiculous
- Endangered Mission Blue & San Bruno Elfin butterfly habitat
- Home to Harris hawks
- Nike missile site

Notes: \_\_\_\_\_

\_\_\_\_\_

\_\_\_\_\_

\_\_\_\_\_

\_\_\_\_\_

# Sweeney Ridge / Cattle Hill



# Sweeney Ridge / Cattle Hill



Parking & Trailhead:  
Sneath Lane



Northwest view



Parking & Trailhead:  
Shelldance Nursery



Parking & Trailhead: 22  
Skyline College

# Sweeney Ridge / Cattle Hill



EXPERIENCE  
YOUR  
AMERICA

- Multiple entries to ridge-top trails
- Hikers & dog walkers
- Needs signage and enhanced entryways (ex.: Sheldance Nursery to Mori Pt.)
- Historic views first seen by Gaspar de Portola

Notes: \_\_\_\_\_

\_\_\_\_\_

\_\_\_\_\_

\_\_\_\_\_

\_\_\_\_\_

# San Francisco County





# Fort Funston



# Fort Funston



Aerial view



Trail & view

# Fort Funston



EXPERIENCE  
YOUR  
AMERICA

- Cliff-top military installation
- Premier hang-gliding spot, surfers, beach goers
- Native plant nursery reintroduces beach strawberry, several perennial lupines, etc.
- Home of the peninsula's largest remaining sand dunefield
- Endangered Bank Swallow habitat

Notes: \_\_\_\_\_

---

---

---

---

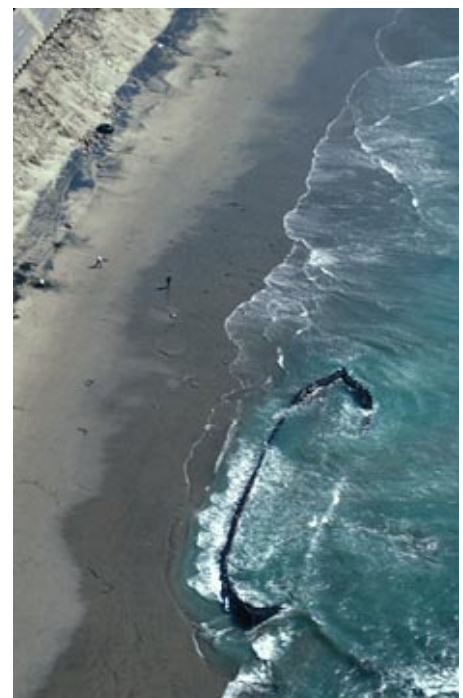
---

# Ocean Beach



Aerial view

Shipwrecked  
King Philip



# Ocean Beach



EXPERIENCE  
YOUR  
AMERICA

- Large stretch of sandy beach
- Surfers, beach goers, runners
- Campfires and trash are problematic
- At Ortega St., the ribs from the shipwrecked King Philip can be seen at low tide

Notes: \_\_\_\_\_

\_\_\_\_\_

\_\_\_\_\_

\_\_\_\_\_

\_\_\_\_\_

# Cliff House, Lands End & Sutro Park



View from Cliff House



Sutro Bath Ruins



Cliff House Aerial View

# Cliff House, Lands End & Sutro Park

EXPERIENCE  
YOUR  
AMERICA

- Lands End connects the Cliff House with the Palace of the Legion of Honor
- Lands End: habitat for Oystercatchers & Cormorants
- Cliff House photographs depict 3 metamorphoses: Casino, Palace, Restaurant
- Cliff Sutro Baths once housed:
  - 9 springboards
  - 7 toboggan slides
  - 3 trapezes
  - 30 swimming rings

Notes: \_\_\_\_\_

\_\_\_\_\_

\_\_\_\_\_

\_\_\_\_\_

\_\_\_\_\_

# China Beach





# China Beach



Aerial view



Picnic area

# China Beach



EXPERIENCE  
YOUR  
AMERICA

- Small beach with picnic area
- Deck of lifeguard tower popular with sunbathers
- Claims that Chinese fishermen anchored their junk boats in the cove and camped on the beach

Notes: \_\_\_\_\_

\_\_\_\_\_

\_\_\_\_\_

\_\_\_\_\_

\_\_\_\_\_

# Presidio (including: Baker Beach, Fort Point & Crissy Field)



Aerial view



Presidio Row

# Presidio (including: Baker Beach, Fort Point & Crissy Field)



# Presidio (including: Baker Beach, Fort Point & Crissy Field)



EXPERIENCE  
YOUR  
AMERICA

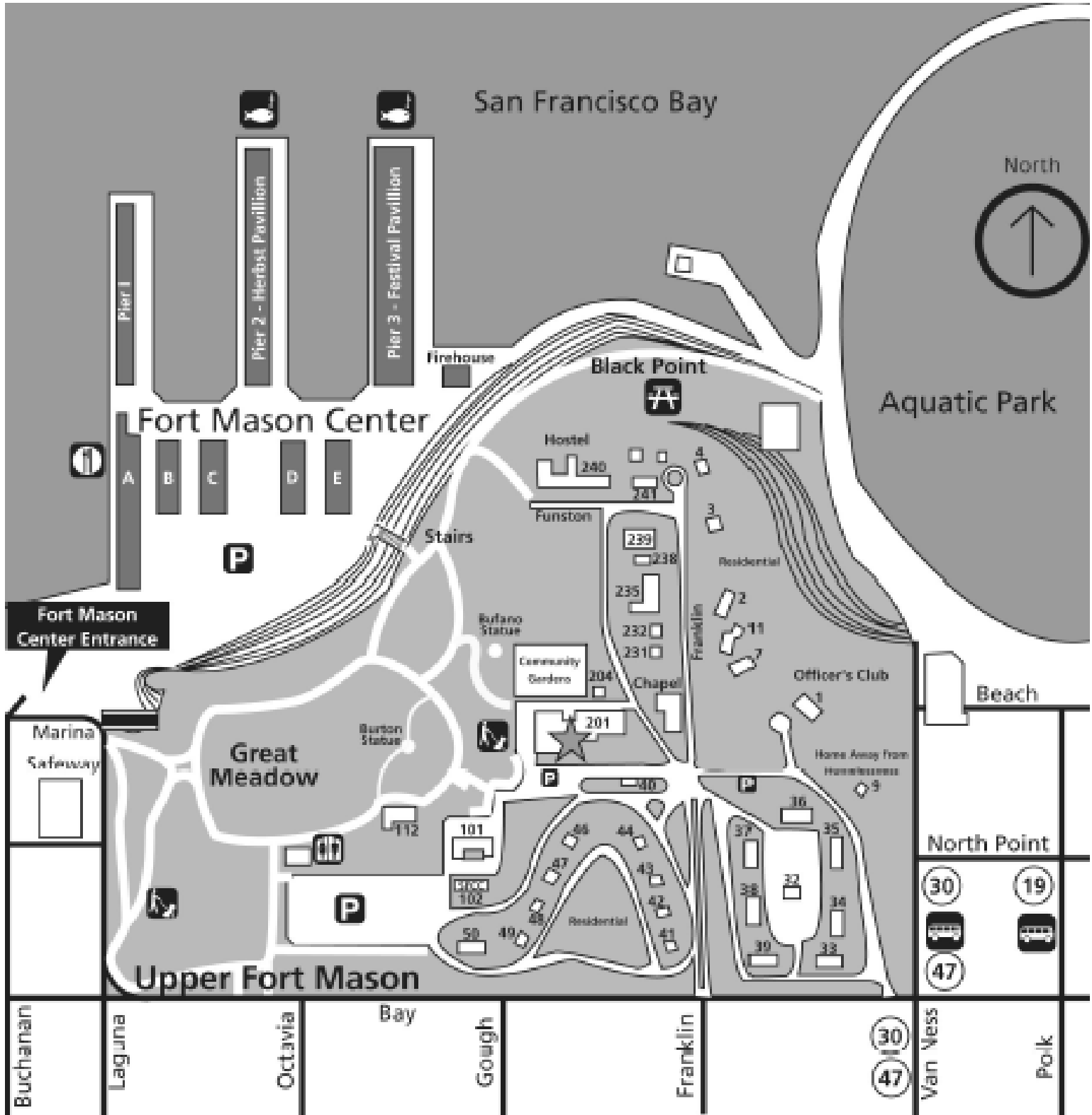
- Baker Beach
  - Houses Battery Chamberlain – a ‘disappearing’ cannon
  - Very popular in the summer (notice the amount of parking)
  - Ocean-front cliffs are home to Serpentine – the official CA state rock
  - Site of the only recorded shark attack in SF (1959)
- Fort Point
  - Civil War-era fortification at the foot of the Golden Gate Bridge
  - Bay access, a historic fort with exhibits, Visitor’s Center, bookstore & last leg of the Golden Gate Promenade trail
  - Amazing views, runner ‘turn-around’ point & spectators watching surfers
- Crissy Field
  - Large marsh that was home to the Ohlone Indians, Grand Prix Raceway, Coast Guard Station, Army Airfield
  - Now a premier recreation site for runners, kite-flyers, windsurfers & picnickers
- Presidio
  - Large historic military installation with numerous uses and attractions, including: trails, building clusters used as park administrative and commercial space (National Park Service, Presidio Trust, YMCA, Letterman Digital Arts Center, etc.), and tourist/recreational attractions (Visitor's Center/Officer's Club, bowling alley, etc.)

Notes: \_\_\_\_\_

\_\_\_\_\_

\_\_\_\_\_

# Upper & Lower Fort Mason



# Upper & Lower Fort Mason



Upper Fort Mason: NPS Headquarters



Path from Aquatic Park

# Upper & Lower Fort Mason



EXPERIENCE  
YOUR  
AMERICA

- Upper Fort Mason
  - large historic military installation now acts as the NPS headquarters
  - Small and large buildings that encompass the site include a hostel, public garden, chapel, housing, pedestrian/bike path, and large grassy field (meadow)
- Lower Fort Mason
  - Just below the park headquarters includes piers, docks, and structures from the historic military installation
  - Long pier-side buildings are used as: office space (retail and commercial), restaurants, and special events centers

Notes: \_\_\_\_\_

\_\_\_\_\_

\_\_\_\_\_

\_\_\_\_\_

\_\_\_\_\_



# Alcatraz



# Alcatraz



View from San Francisco



Visitors on tour

# Alcatraz



EXPERIENCE  
YOUR  
AMERICA

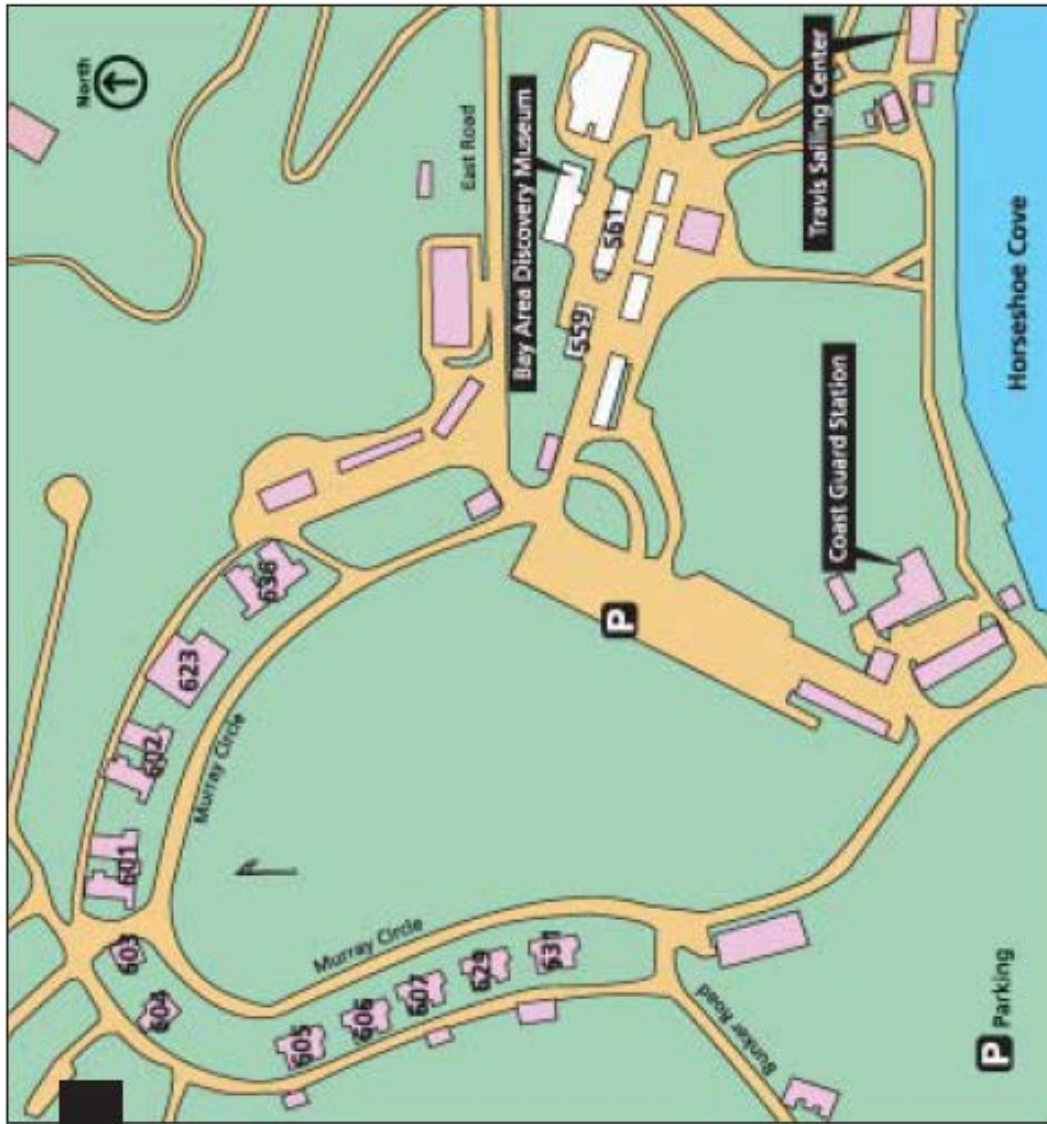
- Landmark historic island prison and military fortification
- One of the few fee sites of GGNRA
- Offers a unique prison-as-museum visitor experience
- Black-crowned Night Heron habitat
- Volunteers preserve gardens initiated by military & prison personnel
- One of the largest western gull nesting sites on the West Coast

Notes: \_\_\_\_\_  
\_\_\_\_\_  
\_\_\_\_\_  
\_\_\_\_\_  
\_\_\_\_\_

# Marin County



# Fort Baker



## Murray Circle Buildings

- 559 *Quartermaster and Subsistence storehouse (1902 - now BADM)*
- 561 *Wagon shed (1903 - now BADM)*
- 601 *Barracks (1903)*
- 602 *Barracks (1902 - now NPS)*
- 603 *Post Headquarters (1903)*
- 604 *Commanding officer's quarters (1903)*
- 605 *Duplex captains' quarters (1902)*
- 606 *Duplex lieutenants' quarters (1902)*
- 607 *Duplex captains' quarters (1903)*
- 623 *Gymnasium (1904)*
- 629 *Duplex lieutenants' quarters (1904)*
- 631 *Duplex captains' quarters (1904)*
- 636 *Barracks (1907)*

# Fort Baker



Historic military housing



Aerial view of Horseshoe Cove

# Fort Baker

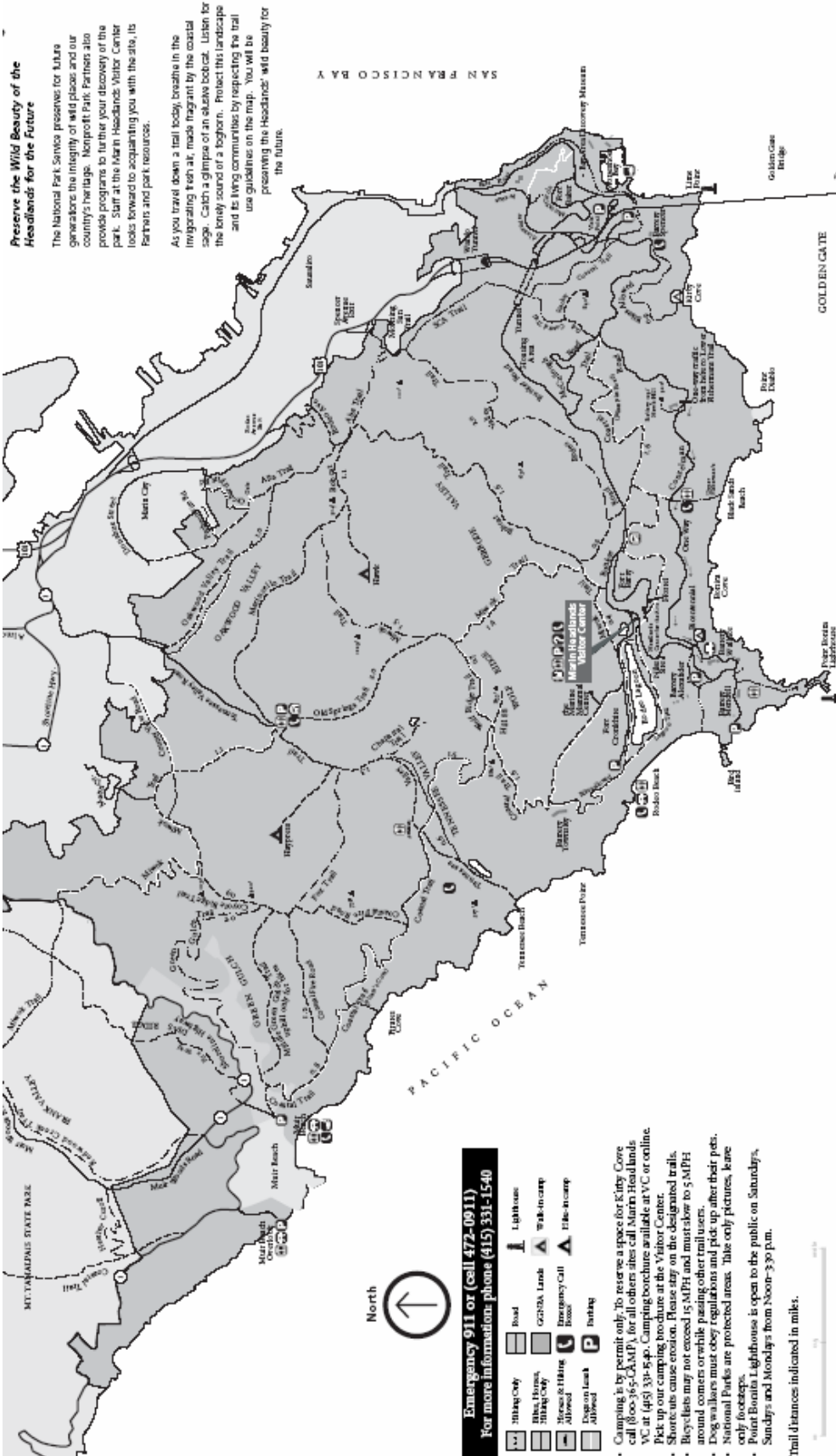


EXPERIENCE  
YOUR  
AMERICA

- Historic military installation with: Coast Guard station, Bay Area Discovery Museum, Travis Sailing Center, and bay access
- Officer's housing to be converted into a conference center
- Fishing pier popular for catching Perch, Flounder & Smelt

Notes: \_\_\_\_\_  
\_\_\_\_\_  
\_\_\_\_\_  
\_\_\_\_\_  
\_\_\_\_\_

# Marin Headlands



## Preserve the Wild Beauty of the Headlands for the Future

The National Park Service preserves for future generations the integrity of wild places and our country's heritage. Marin Headlands Park also provides programs to turner your discovery of the park. Start at the Marin Headlands Visitor Center looking forward to acquainting you with the site, its features and park resources.

As you travel down a trail today, breathe in the invigorating fresh air, made fragrant by the coastal sage. Catch a glimpse of an elusive bobcat. Listen for the lonely sound of a toghorn. Protect this landscape and its living communities by respecting the trail and its living communities by respecting the trail use guidelines on the map. You will be preserving the Headlands' wild beauty for the future.



# Marin Headlands



Aerial view



Fort Cronkite & Rodeo Beach

# Marin Headlands



EXPERIENCE  
YOUR  
AMERICA

- Large site with multiple uses and entities, including: miles of trails, historic military fortifications, NPS housing, NPS administrative offices, a youth hostel, the YMCA, the Marine Mammal Center, a NPS Visitor Center, various non-profit offices, overlooks, campsites, and beach access
- 20,000 raptors migrate through the headlands during the 5 month annual migration season
- Pillow Basalt & Chert outcrops visible in sea cliffs and road cuts (especially at Kirby Cove)
- Two overlapping floral provinces offer abundant wildflower species

Notes: \_\_\_\_\_

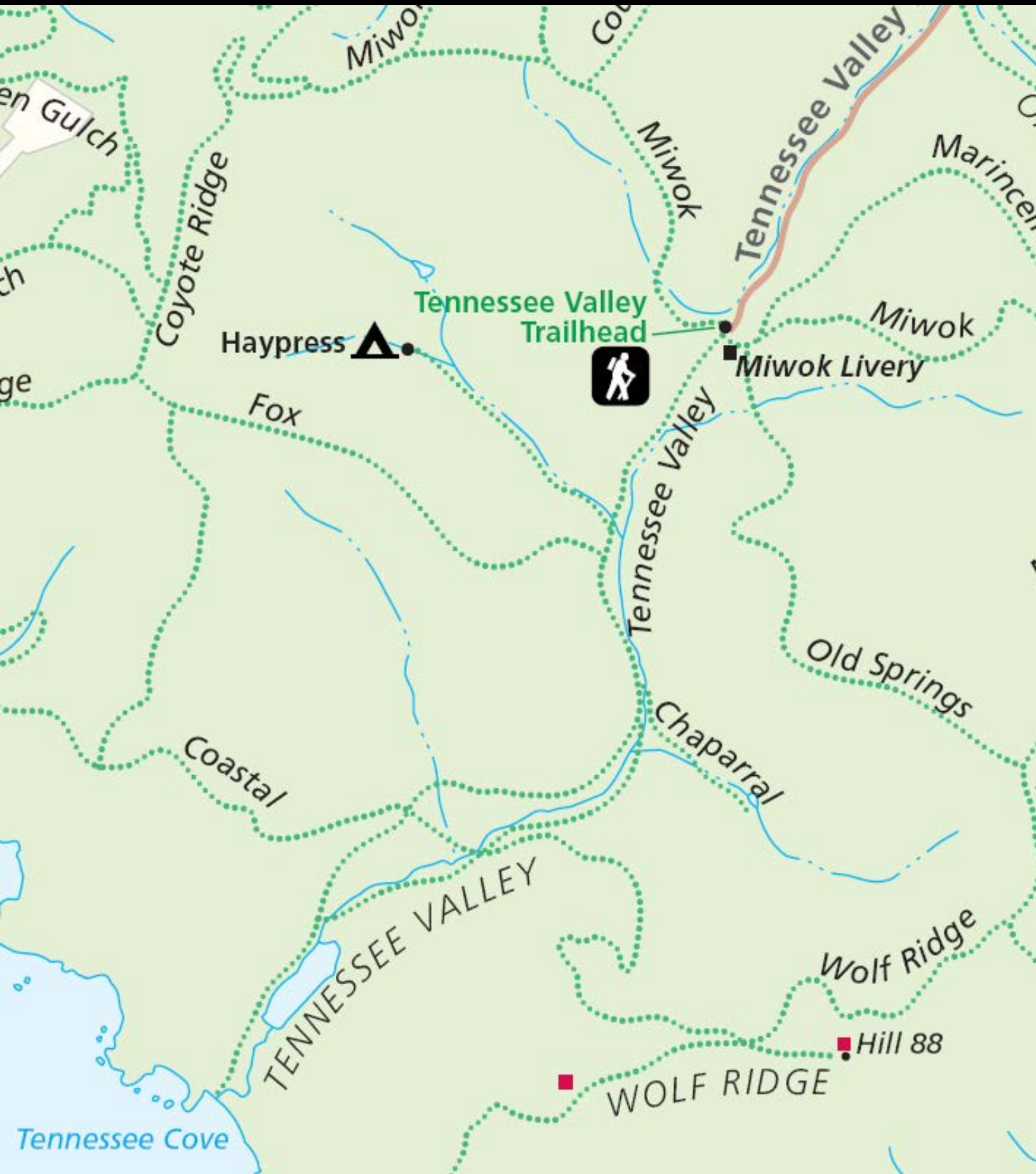
\_\_\_\_\_

\_\_\_\_\_

\_\_\_\_\_

\_\_\_\_\_

# Tennessee Valley



# Tennessee Valley



Aerial view

Trailhead



# Tennessee Valley

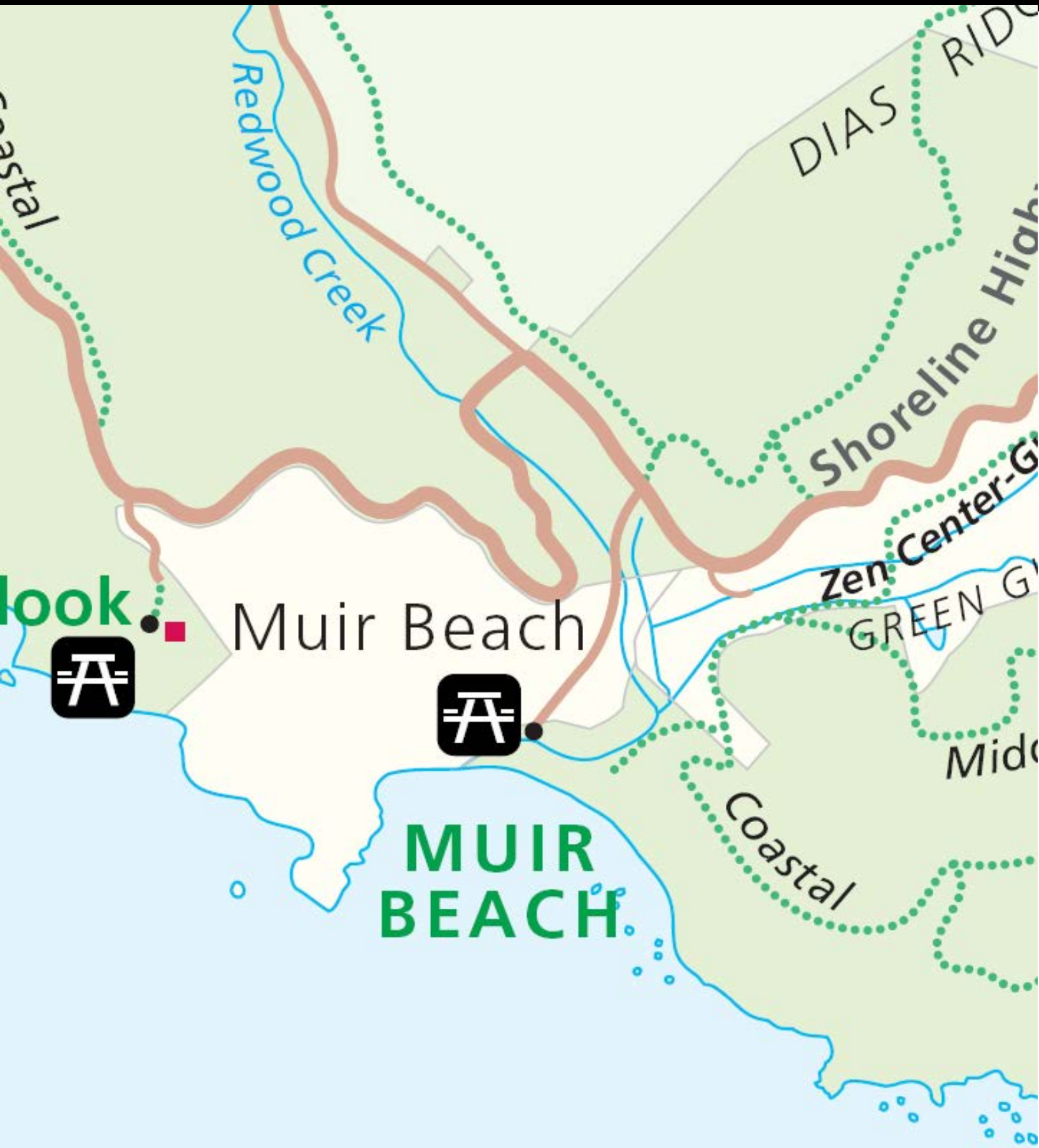


EXPERIENCE  
YOUR  
AMERICA

- Wide well-groomed trails lead to this site's popular small beach cove
- Named after the shipwrecked SS Tennessee: currently submerged off the black sand beach
- Historically known as 'Elk Valley', a big-game hunting site for elk, bear, deer & coyote

Notes: \_\_\_\_\_  
\_\_\_\_\_  
\_\_\_\_\_  
\_\_\_\_\_  
\_\_\_\_\_

# Muir Beach



# Muir Beach



Aerial view



Redwood Creek heading toward the ocean

# Muir Beach



EXPERIENCE  
YOUR  
AMERICA

- Small cove and beach popular for picnickers & whale watchers
- Unformalized parking can be problematic
- Terminus of Redwood Creek & Salmon spawning site
- Entry road subject to flooding

Notes: \_\_\_\_\_

\_\_\_\_\_

\_\_\_\_\_

\_\_\_\_\_

\_\_\_\_\_



# Muir Beach Overlook & Slide Ranch



# Muir Beach Overlook & Slide Ranch



Slide Ranch aerial view



View from Muir Beach Overlook

# Muir Beach Overlook & Slide Ranch



EXPERIENCE  
YOUR  
AMERICA

- Muir Beach Overlook
  - Gives a panoramic view of Muir Beach and the entire coastline; acts as a rest stop for those traveling along HWY 1
- Slide Ranch
  - Non-profit organization leases and manages the site
  - Slide Ranch provides an educational experience that promotes sustainable agriculture and resource awareness

Notes: \_\_\_\_\_

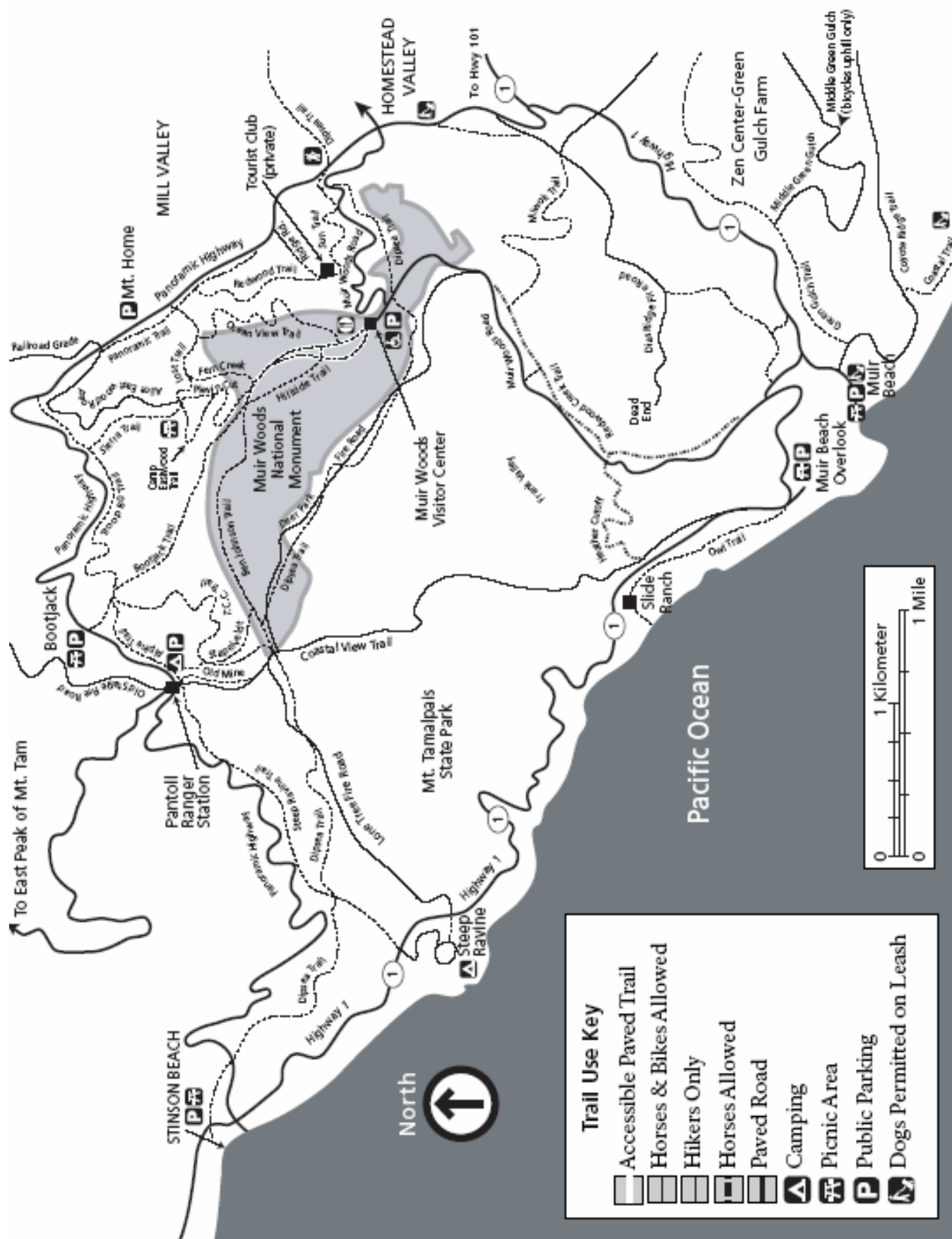
\_\_\_\_\_

\_\_\_\_\_

\_\_\_\_\_

\_\_\_\_\_

# Muir Woods



# Muir Woods



Visitors & boardwalk



Fallen Redwood

# Muir Woods



EXPERIENCE  
YOUR  
AMERICA

- Landmark monument of the redwood forest
- One of the few fee sites of the GGNRA
- Major tourist destination: 1.5 million annual visitors
- Most Redwoods are 400-800 years old (tallest = 250 feet)
- Redwood Creek meanders through the site & footbridges allow visitors to watch Water Striders, dragonflies, salmon & Steelhead

Notes: \_\_\_\_\_

\_\_\_\_\_

\_\_\_\_\_

\_\_\_\_\_

\_\_\_\_\_

# Stinson Beach & Camino del Canyon



Aerial view



Abandoned building removal

# Stinson Beach



EXPERIENCE  
YOUR  
AMERICA

- Highly visited site includes 3 miles of sandy beach, picnicking areas, a lifeguard station and snack bar (both in operation during the summer only)

Notes: \_\_\_\_\_

\_\_\_\_\_

\_\_\_\_\_

\_\_\_\_\_

\_\_\_\_\_