

# ORV: Orange Cliffs Area

Glen Canyon NRA and Rainbow Bridge NM  
National Park Service  
U.S. Department of the Interior



 Unpaved Designated Road


Open to Conventional Vehicles,  
OHVs, and Street-Legal ATVs

 Unpaved Orange Cliffs (OC) Designated Road

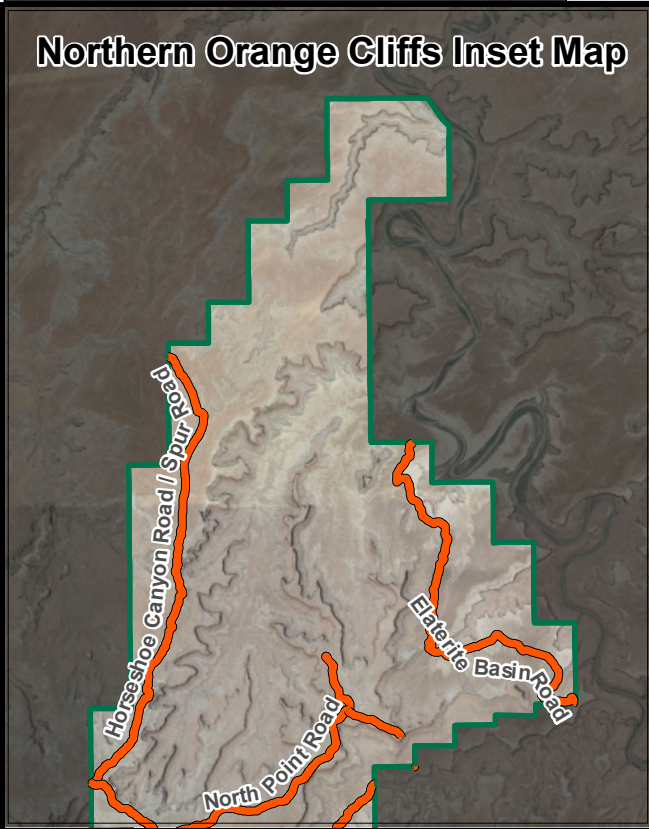
Open to Conventional Vehicles ONLY

*\*A permit system for vehicles to operate in designated areas is in development.*

 Orange Cliffs Management Boundary

 Glen Canyon NRA Boundary

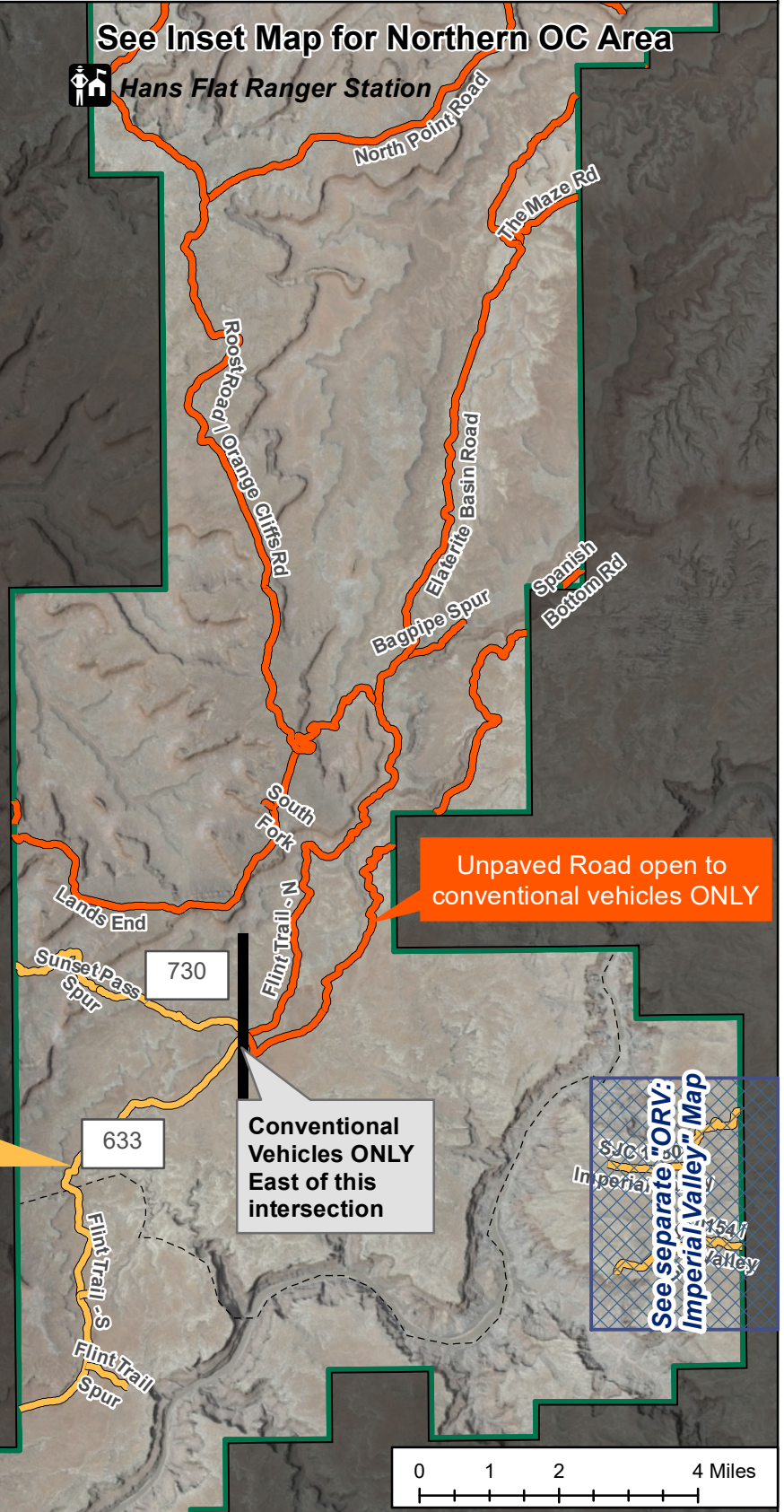
## Northern Orange Cliffs Inset Map



## See Inset Map for Northern OC Area



Hans Flat Ranger Station



Conventional motor vehicles, street-legal ATVs and OHVs authorized for use on approximately 8 miles of roads within the Orange Cliffs Unit (Route 633 proceeding north to Route 730 and proceeding west to the park boundary).

**Conventional Vehicles ONLY**  
East of this intersection

See separate "ORV: Imperial Valley" Map

**DISCLAIMER: THIS IS SUBJECT TO REVISION. CHECK GLCA.GOV WEBSITE FOR UPDATES. For planning purposes only. Not for navigational use.**

