


# ORV: East Gypsum Canyon Area

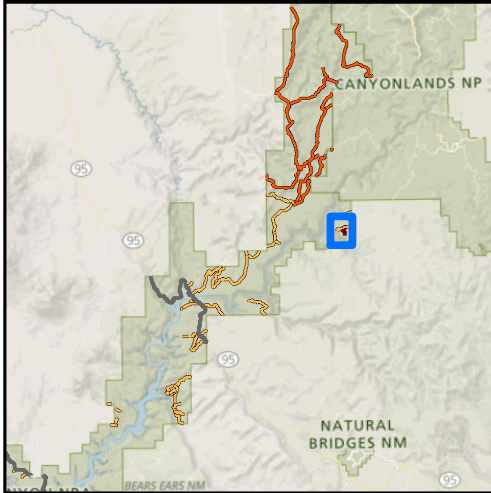
Glen Canyon NRA and Rainbow Bridge NM  
National Park Service  
U.S. Department of the Interior



 **Unpaved Designated Road**  
Open to Conventional Vehicles,  
OHVs, and Street-Legal ATVs

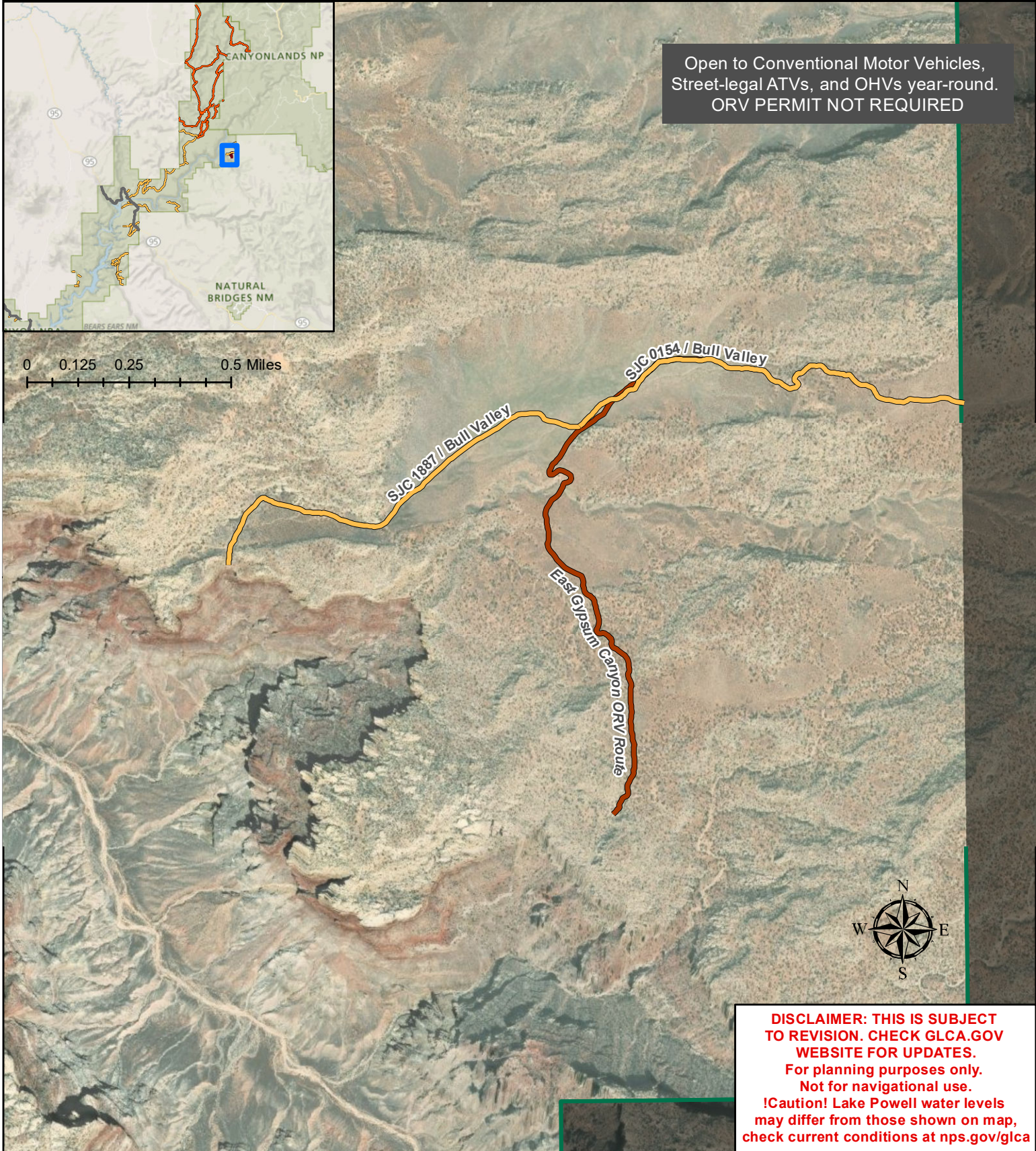
 **Designated ORV Routes**  
Open to Conventional Vehicles,  
OHVs, and Street-Legal ATVs

 Glen Canyon NRA Boundary



Open to Conventional Motor Vehicles,  
Street-legal ATVs, and OHVs year-round.  
ORV PERMIT NOT REQUIRED

0 0.125 0.25 0.5 Miles



**DISCLAIMER: THIS IS SUBJECT TO REVISION. CHECK [GLCA.GOV](http://GLCA.GOV) WEBSITE FOR UPDATES.**  
For planning purposes only.  
Not for navigational use.  
**!Caution! Lake Powell water levels may differ from those shown on map, check current conditions at [nps.gov/glca](http://nps.gov/glca)**