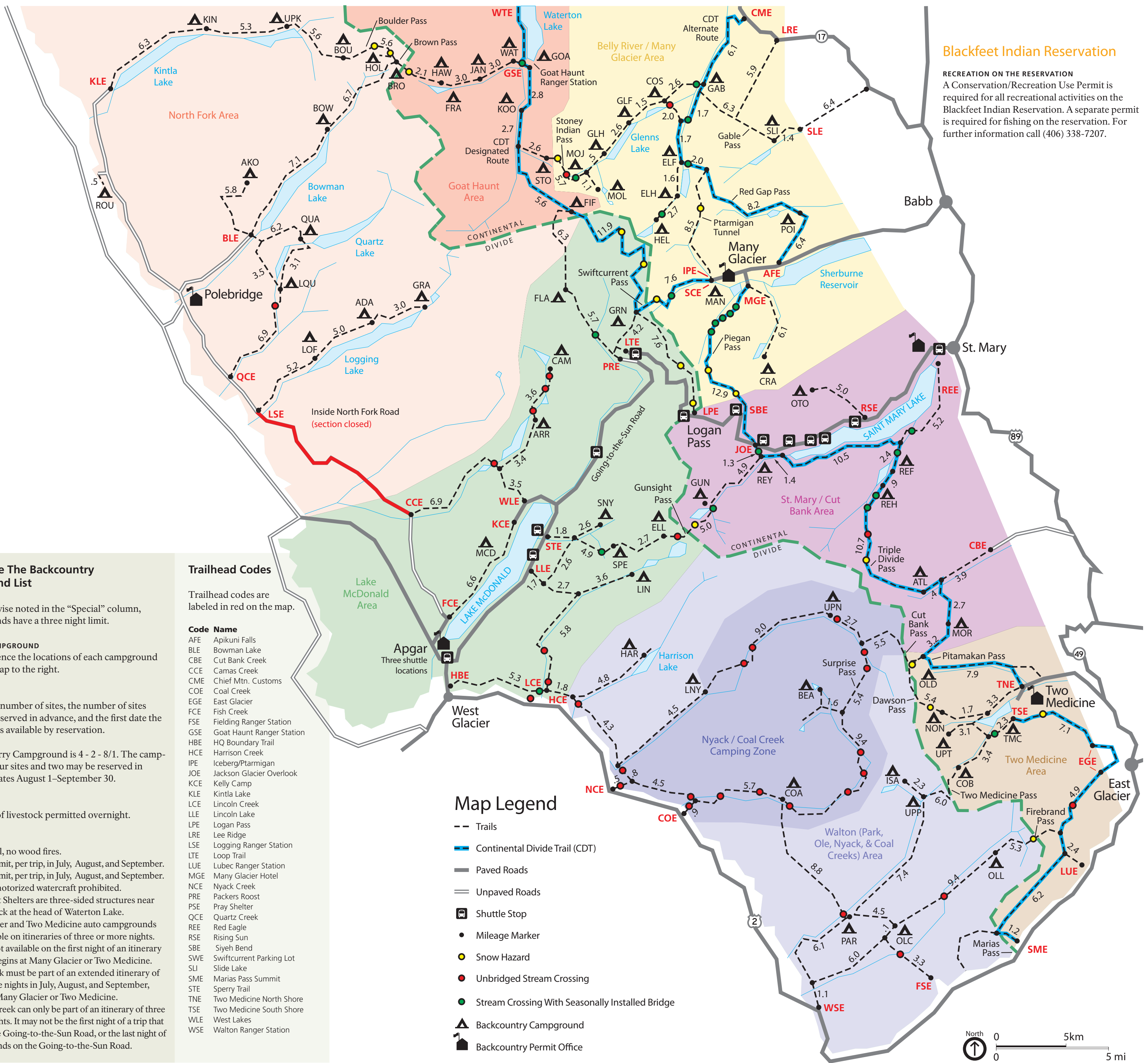


Backcountry Map



Blackfoot Indian Reservation

RECREATION ON THE RESERVATION
A Conservation/Recreation Use Permit is required for all recreational activities on the Blackfoot Indian Reservation. A separate permit is required for fishing on the reservation. For further information call (406) 338-7207.

Backcountry Campground List

| Code | Campground | Info | Stock | Special |
|------|---------------------|--------------|-------|---------|
| ADA | Adair | 4 - 2 - 6/15 | 8 | |
| AKO | Akokala Lake | 3 - 2 - 6/15 | 0 | ◆ |
| ARR | Arrow Lake | 2 - 1 - 6/15 | 8 | ◆ |
| ATL | Atlantic Creek | 4 - 2 - 6/15 | 8 | ◆ |
| BEA | Beaver Woman Lake | 2 - 2 - 7/15 | 10 | ◆ |
| BOU | Boulder Pass | 3 - 2 - 8/1 | 0 | ◆ |
| BOW | Bowman Lake HD | 6 - 3 - 6/15 | 8 | ◆ |
| BRO | Brown Pass | 3 - 2 - 7/15 | 0 | ◆ |
| CAM | Camas Lake | 2 - 1 - 7/15 | 0 | ◆ |
| COA | Coal Creek | 2 - 2 - 7/15 | 10 | ◆ |
| COB | Cobalt Lake | 2 - 2 - 8/1 | 0 | ◆ ① |
| COS | Cosley Lake | 4 - 2 - 6/15 | 8 | ◆ |
| CRA | Cracker Lake | 3 - 2 - 6/15 | 0 | ◆ |
| ELF | Elizabeth Lake FT | 5 - 3 - 6/15 | 8 | ◆ ① |
| ELH | Elizabeth Lake HD | 4 - 2 - 6/15 | 8 | ◆ ② |
| ELL | Lake Ellen Wilson | 4 - 2 - 8/1 | 8 | ◆ ① |
| FIF | Fifty Mountain | 5 - 3 - 8/1 | 8 | ◆ |
| FLA | Flattop | 3 - 2 - 7/15 | 8 | ◆ |
| FRA | Lake Francis | 2 - 1 - 6/15 | 0 | ◆ ① |
| GAB | Gable Creek | 4 - 2 - 6/15 | 8 | ◆ |
| GLF | Glenns Lake FT | 4 - 2 - 6/15 | 8 | ◆ |
| GLH | Glenns Lake HD | 3 - 2 - 6/15 | 0 | ◆ |
| GOA | Goat Haunt Shelters | 7 - 4 - 6/15 | 0 | ◆ * |
| GRA | Grace Lake | 3 - 2 - 7/1 | 0 | ◆ |
| GRN | Granite Park | 4 - 2 - 7/15 | 0 | ◆ ① * |
| GUN | Gunsight Lake | 6 - 3 - 7/15 | 8 | ◆ |
| HAR | Harrison Lake | 3 - 2 - 6/15 | 8 | ◆ |
| HAW | Hawksbill | 2 - 2 - 6/15 | 0 | ◆ |
| HEL | Helen Lake | 2 - 1 - 7/1 | 0 | ◆ |
| HOL | Hole in the Wall | 5 - 3 - 8/1 | 0 | ◆ ① |
| ISA | Lake Isabel | 2 - 1 - 7/1 | 0 | ◆ |
| JAN | Lake Janet | 2 - 1 - 6/15 | 8 | ◆ |
| KIN | Kintla Lake HD | 6 - 3 - 6/15 | 8 | ◆ |
| KOO | Kootenai Lake | 4 - 2 - 6/15 | 8 | ◆ |
| LIN | Lincoln Lake | 3 - 2 - 9/1 | 8 | ◆ |
| LNJ | Lower Nyack | 3 - 2 - 7/15 | 10 | ◆ |
| LOF | Logging Lake FT | 3 - 2 - 6/15 | 0 | ◆ |
| LQU | Lower Quartz Lake | 4 - 2 - 6/15 | 8 | ◆ |
| MAN | Many Glacier CG | 4 - 2 - 6/15 | 0 | ◆ ① * |
| MCD | McDonald Lake | 2 - 1 - 6/15 | 0 | ◆ |
| MOJ | Mokowanis Junction | 5 - 3 - 6/15 | 8 | ◆ |
| MOL | Mokowanis Lake | 2 - 1 - 7/1 | 0 | ◆ |
| MOR | Morning Star Lake | 3 - 2 - 7/15 | 0 | ◆ |
| NON | No Name Lake | 3 - 2 - 7/15 | 0 | ◆ ① |
| OLD | Oldman Lake | 4 - 2 - 7/15 | 8 | ◆ ① |
| OLC | Ole Creek | 3 - 2 - 6/15 | 8 | ◆ |
| OLL | Ole Lake | 2 - 2 - 6/15 | 8 | ◆ |
| OTO | Otokomi Lake | 3 - 2 - 7/15 | 0 | ◆ |
| PAR | Park Creek | 3 - 2 - 6/15 | 8 | ◆ |
| POI | Poia Lake | 4 - 2 - 7/1 | 8 | ◆ |
| QUA | Quartz Lake | 3 - 2 - 6/15 | 0 | ◆ |
| REF | Red Eagle Lake FT | 4 - 2 - 6/15 | 0 | ◆ |
| REH | Red Eagle Lake HD | 4 - 2 - 6/15 | 8 | ◆ |
| REY | Reynolds Creek | 3 - 2 - 6/15 | 8 | ◆ ① * |
| ROU | Round Prairie | 3 - 2 - 7/1 | 0 | ◆ |
| SLI | Slide Lake | 3 - 2 - 6/15 | 8 | ◆ |
| SNY | Snyder Lake | 3 - 2 - 8/1 | 8 | ◆ |
| SPE | Sperry | 4 - 2 - 8/1 | 0 | ◆ ① |
| STO | Stoney Indian Lake | 3 - 2 - 8/1 | 0 | ◆ ① |
| TMC | Two Medicine CG | 4 - 2 - 6/15 | 0 | ◆ ① * |
| UPK | Upper Kintla Lake | 4 - 2 - 6/15 | 8 | ◆ |
| UPN | Upper Nyack | 2 - 2 - 7/15 | 10 | ◆ |
| UPP | Upper Park Creek | 3 - 2 - 6/15 | 8 | ◆ |
| UPT | Upper Two Med. Lake | 4 - 2 - 7/15 | 0 | ◆ ① |
| WAT | Waterton River | 5 - 3 - 6/15 | 8 | ◆ |

How To Use The Backcountry Campground List

Unless otherwise noted in the "Special" column, all campgrounds have a three night limit.

CODE AND CAMPGROUND
Used to reference the locations of each campground on the park map to the right.

INFO
Lists the total number of sites, the number of sites that may be reserved in advance, and the first date the campground is available by reservation.

Example: Sperry Campground is 4 - 2 - 8/1. The campground has four sites and two may be reserved in advance for dates August 1-September 30.

STOCK
The number of livestock permitted overnight.

SPECIAL

- ◆ Limited fuel, no wood fires.
- ① One night limit, per trip, in July, August, and September.
- ② Two night limit, per trip, in July, August, and September.
- Access by motorized watercraft prohibited.
- * Goat Haunt Shelters are three-sided structures near the boat dock at the head of Waterton Lake.
- * Many Glacier and Two Medicine auto campgrounds are reservable on itineraries of three or more nights. They are not available on the first night of an itinerary if the trip begins at Many Glacier or Two Medicine.
- * Granite Park must be part of an extended itinerary of two or more nights in July, August, and September, excluding Many Glacier or Two Medicine.
- * Reynolds Creek can only be part of an itinerary of three or more nights. It may not be the first night of a trip that starts on the Going-to-the-Sun Road, or the last night of a trip that ends on the Going-to-the-Sun Road.

Trailhead Codes

Trailhead codes are labeled in red on the map.

| Code | Name |
|------|---------------------------|
| AFE | Apikuni Falls |
| BLE | Bowman Lake |
| CBE | Cut Bank Creek |
| CCE | Camas Creek |
| CME | Chief Mtn. Customs |
| COE | Coal Creek |
| ECE | East Glacier |
| FCE | Fish Creek |
| FSE | Fielding Ranger Station |
| GSE | Goat Haunt Ranger Station |
| HBE | HQ Boundary Trail |
| HCE | Harrison Creek |
| IPE | Iceberg/Ptarmigan |
| JOE | Jackson Glacier Overlook |
| KCE | Kelly Camp |
| KLE | Kintla Lake |
| LCE | Lincoln Creek |
| LLE | Lincoln Lake |
| LPE | Logan Pass |
| LRE | Lee Ridge |
| LSE | Logging Ranger Station |
| LTE | Loop Trail |
| LUE | Lubec Ranger Station |
| MGE | Many Glacier Hotel |
| NCE | Nyack Creek |
| PRE | Packers Roost |
| PSE | Pray Shelter |
| QCE | Quartz Creek |
| REE | Red Eagle |
| RSE | Rising Sun |
| SBE | Siyeh Bend |
| SWE | Swiftcurrent Parking Lot |
| SLI | Slide Lake |
| SME | Marias Pass Summit |
| STE | Sperry Trail |
| TNE | Two Medicine North Shore |
| TSE | Two Medicine South Shore |
| WLE | West Lakes |
| WSE | Walton Ranger Station |

Map Legend

- Trails
- Continental Divide Trail (CDT)
- Paved Roads
- Unpaved Roads
- 🚌 Shuttle Stop
- Mileage Marker
- Snow Hazard
- Unbridged Stream Crossing
- Stream Crossing With Seasonally Installed Bridge
- ▲ Backcountry Campground
- 🏠 Backcountry Permit Office

