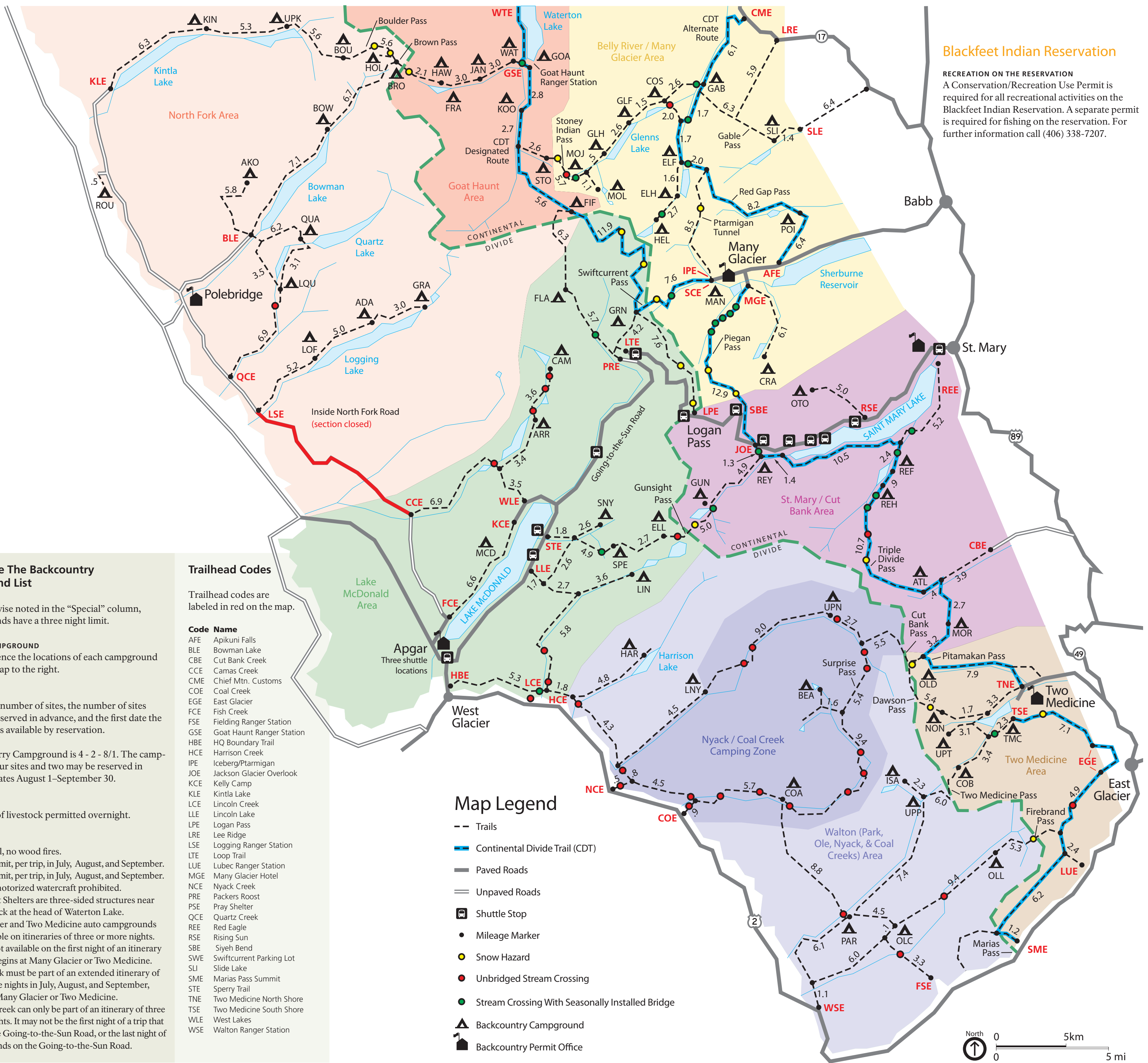


Backcountry Map



Blackfoot Indian Reservation

RECREATION ON THE RESERVATION
A Conservation/Recreation Use Permit is required for all recreational activities on the Blackfoot Indian Reservation. A separate permit is required for fishing on the reservation. For further information call (406) 338-7207.

Backcountry Campground List

Code	Campground	Info	Stock	Special
ADA	Adair	4 - 2 - 6/15	8	
AKO	Akokala Lake	3 - 2 - 6/15	0	◆
ARR	Arrow Lake	2 - 1 - 6/15	8	◆
ATL	Atlantic Creek	4 - 2 - 6/15	8	◆
BEA	Beaver Woman Lake	2 - 2 - 7/15	10	◆
BOU	Boulder Pass	3 - 2 - 8/1	0	◆
BOW	Bowman Lake HD	6 - 3 - 6/15	8	◆
BRO	Brown Pass	3 - 2 - 7/15	0	◆
CAM	Camas Lake	2 - 1 - 7/15	0	◆
COA	Coal Creek	2 - 2 - 7/15	10	◆
COB	Cobalt Lake	2 - 2 - 8/1	0	◆ ①
COS	Cosley Lake	4 - 2 - 6/15	8	◆
CRA	Cracker Lake	3 - 2 - 6/15	0	◆
ELF	Elizabeth Lake FT	5 - 3 - 6/15	8	◆ ①
ELH	Elizabeth Lake HD	4 - 2 - 6/15	8	◆ ②
ELL	Lake Ellen Wilson	4 - 2 - 8/1	8	◆ ①
FIF	Fifty Mountain	5 - 3 - 8/1	8	◆
FLA	Flattop	3 - 2 - 7/15	8	◆
FRA	Lake Francis	2 - 1 - 6/15	0	◆ ①
GAB	Gable Creek	4 - 2 - 6/15	8	◆
GLF	Glenns Lake FT	4 - 2 - 6/15	8	◆
GLH	Glenns Lake HD	3 - 2 - 6/15	0	◆
GOA	Goat Haunt Shelters	7 - 4 - 6/15	0	◆ *
GRA	Grace Lake	3 - 2 - 7/1	0	◆
GRN	Granite Park	4 - 2 - 7/15	0	◆ ① *
GUN	Gunsight Lake	6 - 3 - 7/15	8	◆
HAR	Harrison Lake	3 - 2 - 6/15	8	◆
HAW	Hawksbill	2 - 2 - 6/15	0	◆
HEL	Helen Lake	2 - 1 - 7/1	0	◆
HOL	Hole in the Wall	5 - 3 - 8/1	0	◆ ①
ISA	Lake Isabel	2 - 1 - 7/1	0	◆
JAN	Lake Janet	2 - 1 - 6/15	8	◆
KIN	Kintla Lake HD	6 - 3 - 6/15	8	◆
KOO	Kootenai Lake	4 - 2 - 6/15	8	◆
LIN	Lincoln Lake	3 - 2 - 9/1	8	◆
LNK	Lincoln Lake	3 - 2 - 9/1	8	◆
LNJ	Lower Nyack	3 - 2 - 7/15	10	◆
LOF	Logging Lake FT	3 - 2 - 6/15	0	◆
LQU	Lower Quartz Lake	4 - 2 - 6/15	8	◆
MAN	Many Glacier CG	4 - 2 - 6/15	0	◆ ① *
MCD	McDonald Lake	2 - 1 - 6/15	0	◆
MOJ	Mokowanis Junction	5 - 3 - 6/15	8	◆
MOL	Mokowanis Lake	2 - 1 - 7/1	0	◆
MOR	Morning Star Lake	3 - 2 - 7/15	0	◆
NON	No Name Lake	3 - 2 - 7/15	0	◆ ①
OLD	Oldman Lake	4 - 2 - 7/15	8	◆ ①
OLC	Ole Creek	3 - 2 - 6/15	8	◆
OLL	Ole Lake	2 - 2 - 6/15	8	◆
OTO	Otokomi Lake	3 - 2 - 7/15	0	◆
PAR	Park Creek	3 - 2 - 6/15	8	◆
POI	Poia Lake	4 - 2 - 7/1	8	◆
QUA	Quartz Lake	3 - 2 - 6/15	0	◆
REF	Red Eagle Lake FT	4 - 2 - 6/15	0	◆
REH	Red Eagle Lake HD	4 - 2 - 6/15	8	◆
REY	Reynolds Creek	3 - 2 - 6/15	8	◆ ① *
ROU	Round Prairie	3 - 2 - 7/1	0	◆
SLI	Slide Lake	3 - 2 - 6/15	8	◆
SNY	Snyder Lake	3 - 2 - 8/1	8	◆
SPE	Sperry	4 - 2 - 8/1	0	◆ ①
STO	Stoney Indian Lake	3 - 2 - 8/1	0	◆ ①
TMC	Two Medicine CG	4 - 2 - 6/15	0	◆ ① *
UPK	Upper Kintla Lake	4 - 2 - 6/15	8	◆
UPN	Upper Nyack	2 - 2 - 7/15	10	◆
UPP	Upper Park Creek	3 - 2 - 6/15	8	◆
UPT	Upper Two Med. Lake	4 - 2 - 7/15	0	◆ ①
WAT	Waterton River	5 - 3 - 6/15	8	◆

How To Use The Backcountry Campground List

Unless otherwise noted in the "Special" column, all campgrounds have a three night limit.

CODE AND CAMPGROUND
Used to reference the locations of each campground on the park map to the right.

INFO
Lists the total number of sites, the number of sites that may be reserved in advance, and the first date the campground is available by reservation.

Example: Sperry Campground is 4 - 2 - 8/1. The campground has four sites and two may be reserved in advance for dates August 1-September 30.

STOCK
The number of livestock permitted overnight.

SPECIAL

- ◆ Limited fuel, no wood fires.
- ① One night limit, per trip, in July, August, and September.
- ② Two night limit, per trip, in July, August, and September.
- Access by motorized watercraft prohibited.
- * Goat Haunt Shelters are three-sided structures near the boat dock at the head of Waterton Lake.
- * Many Glacier and Two Medicine auto campgrounds are reservable on itineraries of three or more nights. They are not available on the first night of an itinerary if the trip begins at Many Glacier or Two Medicine.
- * Granite Park must be part of an extended itinerary of two or more nights in July, August, and September, excluding Many Glacier or Two Medicine.
- * Reynolds Creek can only be part of an itinerary of three or more nights. It may not be the first night of a trip that starts on the Going-to-the-Sun Road, or the last night of a trip that ends on the Going-to-the-Sun Road.

Trailhead Codes

Trailhead codes are labeled in red on the map.

Code	Name
AFE	Apikuni Falls
BLE	Bowman Lake
CBE	Cut Bank Creek
CCE	Camas Creek
CME	Chief Mtn. Customs
COE	Coal Creek
ECE	East Glacier
FCE	Fish Creek
FSE	Fielding Ranger Station
GSE	Goat Haunt Ranger Station
HBE	HQ Boundary Trail
HCE	Harrison Creek
IPE	Iceberg/Ptarmigan
JOE	Jackson Glacier Overlook
KCE	Kelly Camp
KLE	Kintla Lake
LCE	Lincoln Creek
LLE	Lincoln Lake
LPE	Logan Pass
LRE	Lee Ridge
LSE	Logging Ranger Station
LTE	Loop Trail
LUE	Lubec Ranger Station
MGE	Many Glacier Hotel
NCE	Nyack Creek
PRE	Packers Roost
PSE	Pray Shelter
QCE	Quartz Creek
REE	Red Eagle
RSE	Rising Sun
SBE	Siyeh Bend
SWE	Swiftcurrent Parking Lot
SLI	Slide Lake
SME	Marias Pass Summit
STE	Sperry Trail
TNE	Two Medicine North Shore
TSE	Two Medicine South Shore
WLE	West Lakes
WSE	Walton Ranger Station

Map Legend

- Trails
- Continental Divide Trail (CDT)
- Paved Roads
- Unpaved Roads
- 🚌 Shuttle Stop
- Mileage Marker
- Snow Hazard
- Unbridged Stream Crossing
- Stream Crossing With Seasonally Installed Bridge
- ▲ Backcountry Campground
- 🏠 Backcountry Permit Office

