

# Planning Your Trip

## Backcountry Campground List

Code	Campground	Info	Stock	Special
ADA	Adair	4 - 2 - 6/15	8	
AKO	Akokala Lake	3 - 2 - 6/15	0	◆
ARR	Arrow Lake	2 - 1 - 6/15	8	◆
ATL	Atlantic Creek	4 - 2 - 6/15	8	◆
BEA	Beaver Woman Lake	3 - 2 - 7/15	10	
BOU	Boulder Pass	3 - 2 - 8/1	0	◆
BOW	Bowman Lake HD	6 - 3 - 6/15	8	
BRO	Brown Pass	3 - 2 - 7/15	0	◆
CAM	Camas Lake	2 - 1 - 7/15	0	◆
COA	Coal Creek	2 - 2 - 7/15	10	
COB	Cobalt Lake	2 - 2 - 8/1	0	◆
COS	Cosley Lake	4 - 2 - 6/15	8	
CRA	Cracker Lake	3 - 2 - 6/15	0	◆
ELF	Elizabeth Lake FT	5 - 3 - 6/15	8	◆
ELH	Elizabeth Lake HD	4 - 2 - 6/15	8	◆
ELL	Lake Ellen Wilson	4 - 2 - 8/1	8	◆
FIF	Fifty Mountain	5 - 3 - 8/1	8	◆
FLA	Flattop	3 - 2 - 7/15	8	◆
FRA	Lake Francis	2 - 1 - 6/15	0	◆
GAB	Gable Creek	4 - 2 - 6/15	8	◆
GLF	Glenns Lake FT	4 - 2 - 6/15	8	◆
GLH	Glenns Lake HD	3 - 2 - 6/15	0	◆
GOA	Goat Haunt Shelters	7 - 4 - 6/15	0	*
GRA	Grace Lake	3 - 2 - 7/1	0	◆
GRN	Granite Park	4 - 2 - 7/15	0	◆
GUN	Gunsight Lake	6 - 3 - 7/15	8	◆
HAR	Harrison Lake	3 - 2 - 6/15	8	◆
HAW	Hawksbill	2 - 2 - 6/15	0	◆
HEL	Helen Lake	2 - 1 - 7/1	0	◆
HOL	Hole in the Wall	5 - 3 - 8/1	0	◆
ISA	Lake Isabel	2 - 1 - 7/1	0	◆
JAN	Lake Janet	2 - 1 - 6/15	8	◆
KIN	Kintla Lake HD	6 - 3 - 6/15	8	◆
KOO	Kootenai Lake	4 - 2 - 6/15	8	◆
LIN	Lincoln Lake	Closed for the Season		◆
LNJ	Lower Nyack	3 - 2 - 7/15	10	◆
LOF	Logging Lake FT	3 - 2 - 6/15	0	◆
LQU	Lower Quartz Lake	4 - 2 - 6/15	8	◆
MAN	Many Glacier CG	4 - 2 - 6/15	0	◆
MCD	McDonald Lake	2 - 1 - 6/15	0	◆
MOJ	Mokowanis Junction	5 - 3 - 6/15	8	◆
MOL	Mokowanis Lake	2 - 1 - 7/1	0	◆
MOR	Morning Star Lake	3 - 2 - 7/15	0	◆
NON	No Name Lake	3 - 2 - 7/15	0	◆
OLD	Oldman Lake	4 - 2 - 7/15	8	◆
OLC	Ole Creek	3 - 2 - 6/15	8	◆
OLL	Ole Lake	2 - 2 - 6/15	8	◆
OTO	Otokomi Lake	3 - 2 - 7/15	0	◆
PAR	Park Creek	3 - 2 - 6/15	8	◆
POI	Poia Lake	4 - 2 - 7/1	8	◆
QUA	Quartz Lake	3 - 2 - 6/15	0	◆
REF	Red Eagle Lake FT	4 - 2 - 6/15	0	◆
REH	Red Eagle Lake HD	4 - 2 - 6/15	8	◆
REY	Reynolds Creek	3 - 2 - 6/15	8	◆
ROU	Round Prairie	3 - 2 - 7/1	0	◆
SLI	Slide Lake	3 - 2 - 6/15	8	◆
SNY	Snyder Lake	3 - 2 - 6/15	8	◆
SPE	Sperry	4 - 2 - 8/1	0	◆
STO	Stoney Indian Lake	3 - 2 - 8/1	0	◆
TMC	Two Medicine CG	4 - 2 - 6/15	0	◆
UPK	Upper Kintla Lake	4 - 2 - 6/15	8	◆
UPN	Upper Nyack	3 - 2 - 7/15	10	◆
UPP	Upper Park Creek	3 - 2 - 6/15	8	◆
UPT	Upper Two Med. Lake	4 - 2 - 7/15	0	◆
WAT	Waterton River	5 - 3 - 6/15	8	◆

## Special Conditions

Unless otherwise noted in the "Special" column, all campgrounds have a three night limit.

### CODE AND CAMPGROUND

Used to reference the locations of each campground on the park map to the right.

### INFO

Lists the total number of sites, the number of sites that may be reserved in advance, and the first date the campground is available by reservation.

Example: Sperry Campground is 4 - 2 - 8/1. The campground has four sites and two may be reserved in advance for dates August 1–September 30.

### STOCK

The number of livestock permitted overnight.

### SPECIAL

- ◆ Limited fuel, no wood fires.
- ① One night limit, per trip, in July, August, and September.
- ② Two night limit, per trip, in July, August, and September.
- Access by motorized watercraft prohibited.
- \* Goat Haunt Shelters are three-sided structures near the boat dock at the head of Waterton Lake.
- \* Many Glacier and Two Medicine auto campgrounds are reservable on itineraries of three or more nights. They are not available on the first night of an itinerary if the trip begins at Many Glacier or Two Medicine. Both campgrounds are one night only per trip.
- \* Granite Park must be part of an extended itinerary of two or more nights in July, August, and September, excluding Many Glacier or Two Medicine.
- \* Reynolds Creek can only be part of an itinerary of three or more nights. It may not be the first night of a trip that starts on the Going-to-the-Sun Road, or the last night of a trip that ends on the Going-to-the-Sun Road.

## Special Trip Planning Considerations

### ENTERING AT GOAT HAUNT

Southbound travel from Waterton Townsite (Canada) to the Goat Haunt Ranger Station (USA) requires an official government issued photo identification card for U.S. or Canadian citizens or permanent residents. All others must carry a valid passport. Visitors seeking to travel beyond the Goat Haunt Ranger Station into the United States must present documents that are Western Hemisphere Travel Initiative compliant. For information visit: [GetYouHome.gov](http://GetYouHome.gov)

Northbound travel from Goat Haunt Ranger Station (USA) into Waterton Townsite (Canada) mandates contact with the Canadian Chief Mountain Port of Entry upon arrival at Waterton Townsite. Information on contacting the Port of Entry is available at the Waterton Lakes Visitor Centre or the Waterton Station of the Royal Canadian Mounted Police.

The Goat Haunt Port of Entry will operate from 11 am to 5 pm from June through late October. No entry into the United States past the Goat Haunt Ranger Station will be authorized outside of these hours.

### NYACK/COAL CREEK CAMPING ZONE

This area offers opportunities for solitude and higher levels of challenge and risk. In addition to designated sites, undesignated camping is permitted although it still requires a permit. Advance reservations are not allowed for undesignated camping.

### TRANSPORTATION OPTIONS

A free park shuttle runs along the Going-to-the-Sun Road from early July to Labor Day.

There are no commercial shuttle or taxi services available in the North Fork area (Polebridge, Bowman/Kintla Lakes) of the park.

Xanterra Parks & Resorts operates a fee-based trail-head shuttle from Many Glacier to the St. Mary Visitor Center. For information visit: [GlacierNationalPark-Lodges.com](http://GlacierNationalPark-Lodges.com)

Glacier Park Inc. may operate a fee-based shuttle, to locations outside the park, on the east side in the summer. For more information visit: [GlacierParkInc.com](http://GlacierParkInc.com)

### CONTINENTAL DIVIDE TRAIL

A 110-mile segment of The Continental Divide National Scenic Trail (CDT) runs through Glacier. Early and late season alternate routes are marked in blue on the map. CDT through-hikers (Mexico to Canada), who plan on entering Glacier at Marias Pass, should call the backcountry office at (406) 888-7857 prior to starting their trip, to obtain a backcountry permit.

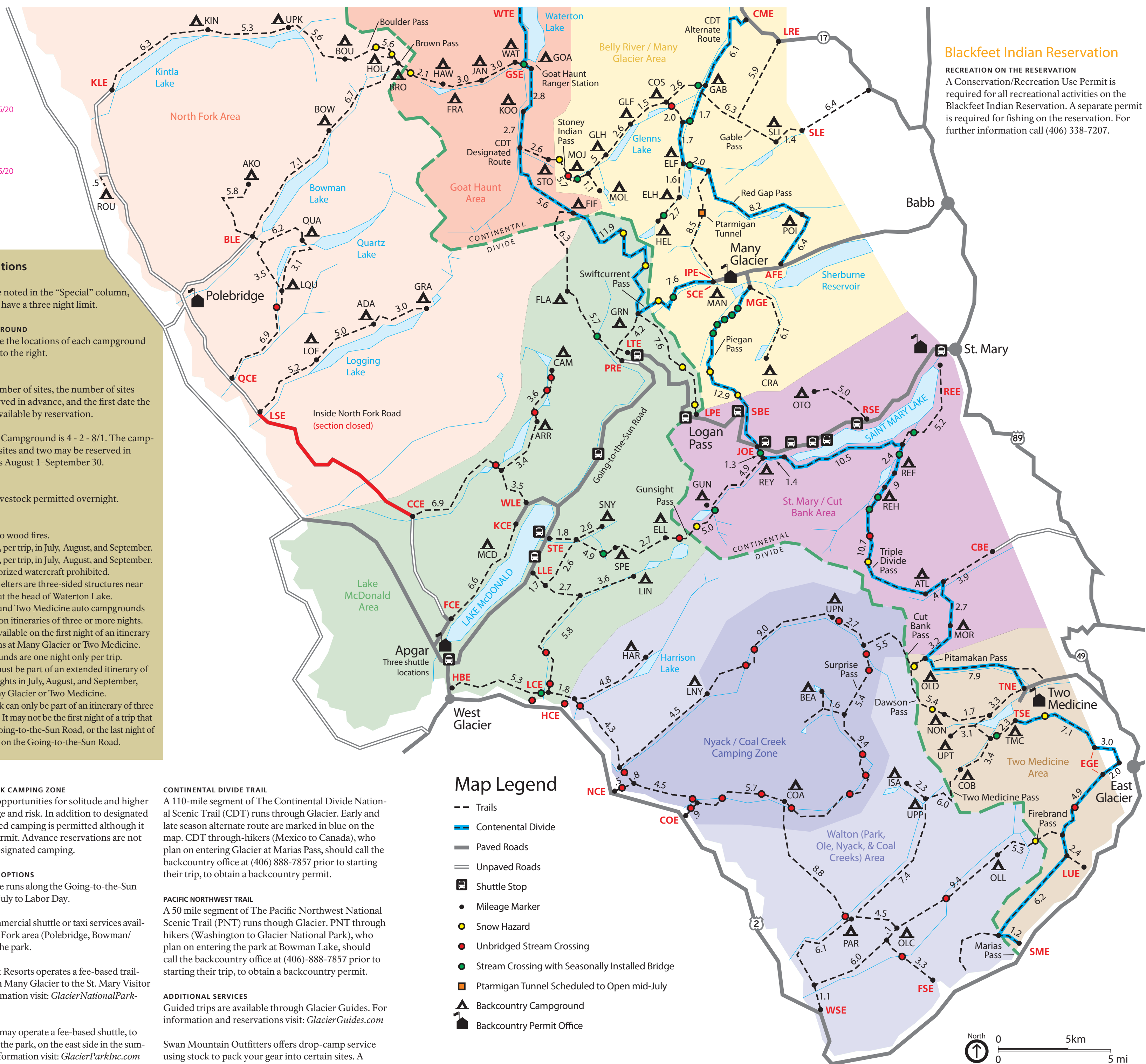
### PACIFIC NORTHWEST TRAIL

A 50 mile segment of The Pacific Northwest National Scenic Trail (PNT) runs through Glacier. PNT through hikers (Washington to Glacier National Park), who plan on entering the park at Bowman Lake, should call the backcountry office at (406)-888-7857 prior to starting their trip, to obtain a backcountry permit.

### ADDITIONAL SERVICES

Guided trips are available through Glacier Guides. For information and reservations visit: [GlacierGuides.com](http://GlacierGuides.com)

Swan Mountain Outfitters offers drop-camp service using stock to pack your gear into certain sites. A backcountry permit is required. For information and reservations visit: [SwanMountainOutfitters.com/glacier](http://SwanMountainOutfitters.com/glacier)



## Blackfoot Indian Reservation

**RECREATION ON THE RESERVATION**  
A Conservation/Recreation Use Permit is required for all recreational activities on the Blackfoot Indian Reservation. A separate permit is required for fishing on the reservation. For further information call (406) 338-7207.

## Map Legend

- Trails
- Continental Divide
- Paved Roads
- Unpaved Roads
- 🚌 Shuttle Stop
- Mileage Marker
- Snow Hazard
- Unbridged Stream Crossing
- Stream Crossing with Seasonally Installed Bridge
- 🏠 Ptarmigan Tunnel Scheduled to Open mid-July
- 🏠 Backcountry Campground
- 🏠 Backcountry Permit Office