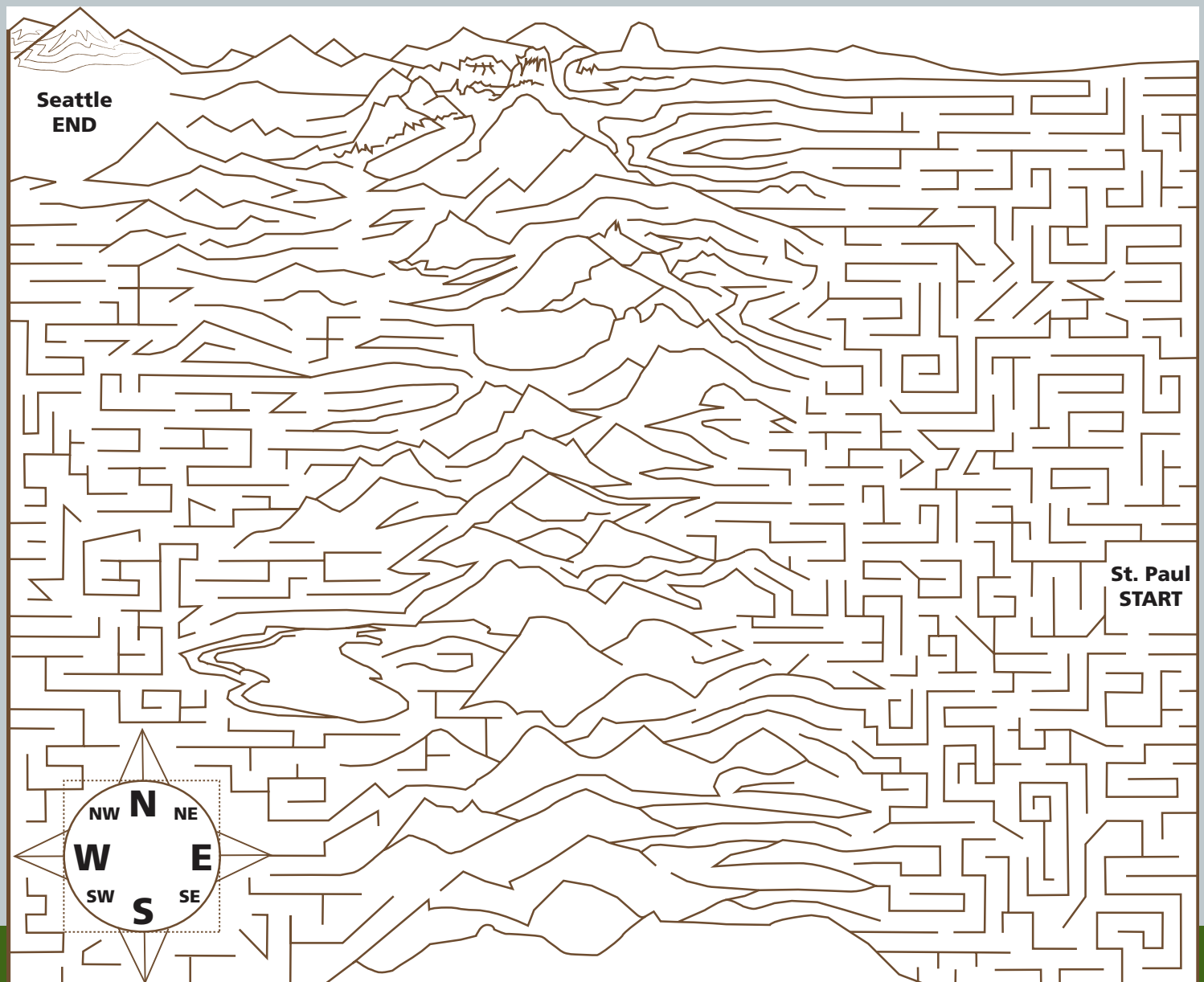
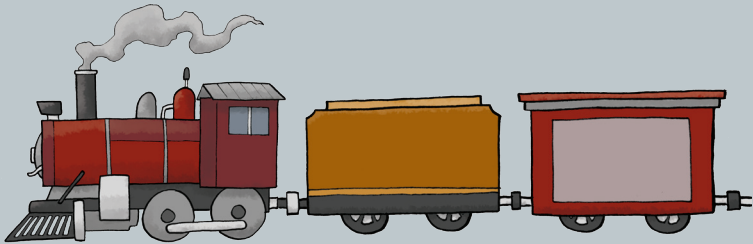


See America First

The Great Northern Railway changed the lives of many forever. The railroad used the saying "See America First" to convince the wealthy to spend their vacations exploring the American West instead of traveling to Europe. After Glacier National Park was

established, the railroad company built hotels, chalets, and trails so that visitors could explore the park. Some of these historic buildings are still used today. For newcomers wanting easy access to the West, the railroad was an improvement that allowed many of them to stay here. For the native peoples already living here, the railroad meant more changes to the lifestyle their grandparents had followed.



Directions:

Find your way from east to west in the maze above.

There is only one pass for the railroad to travel through the mountains so choose wisely!