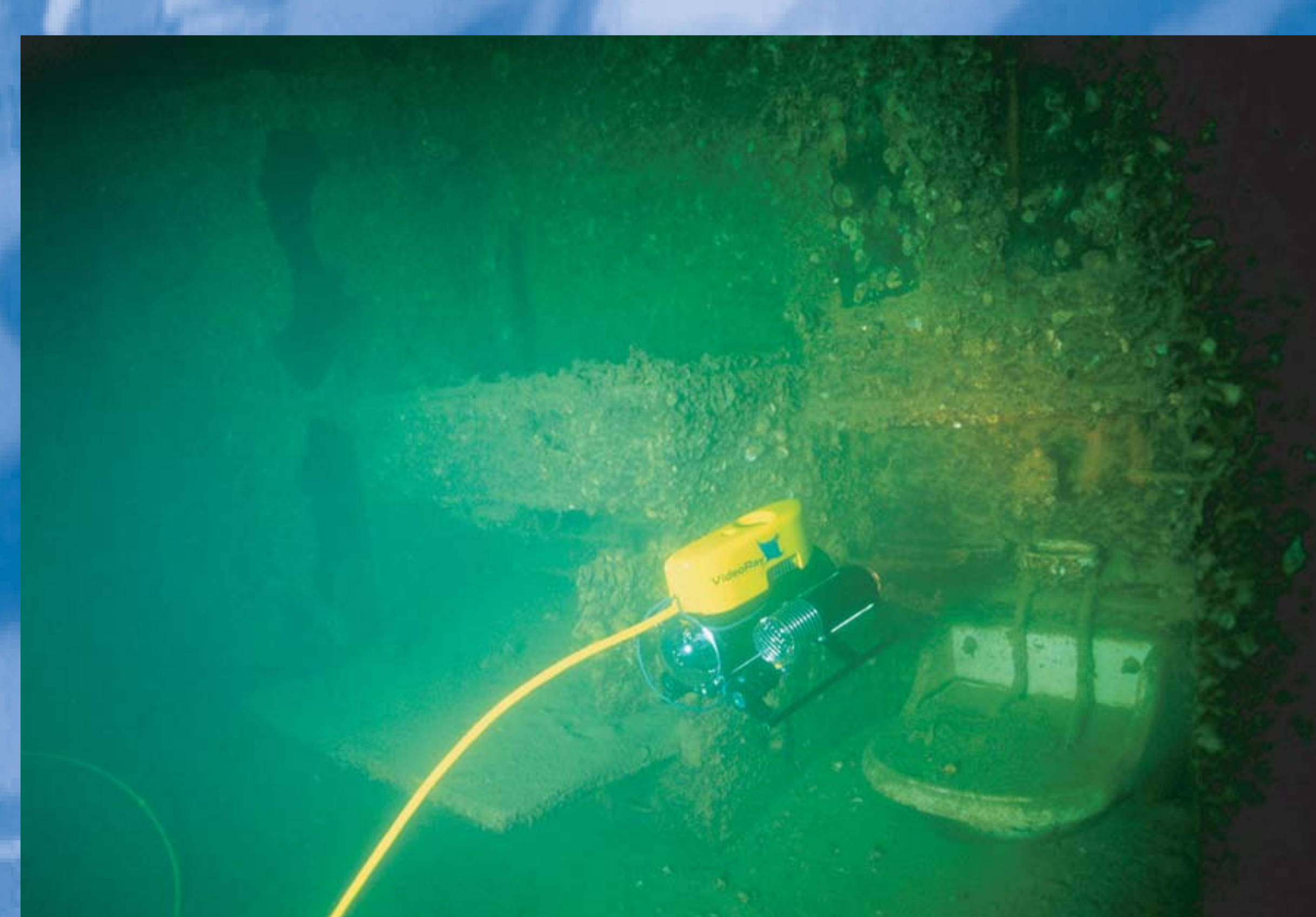
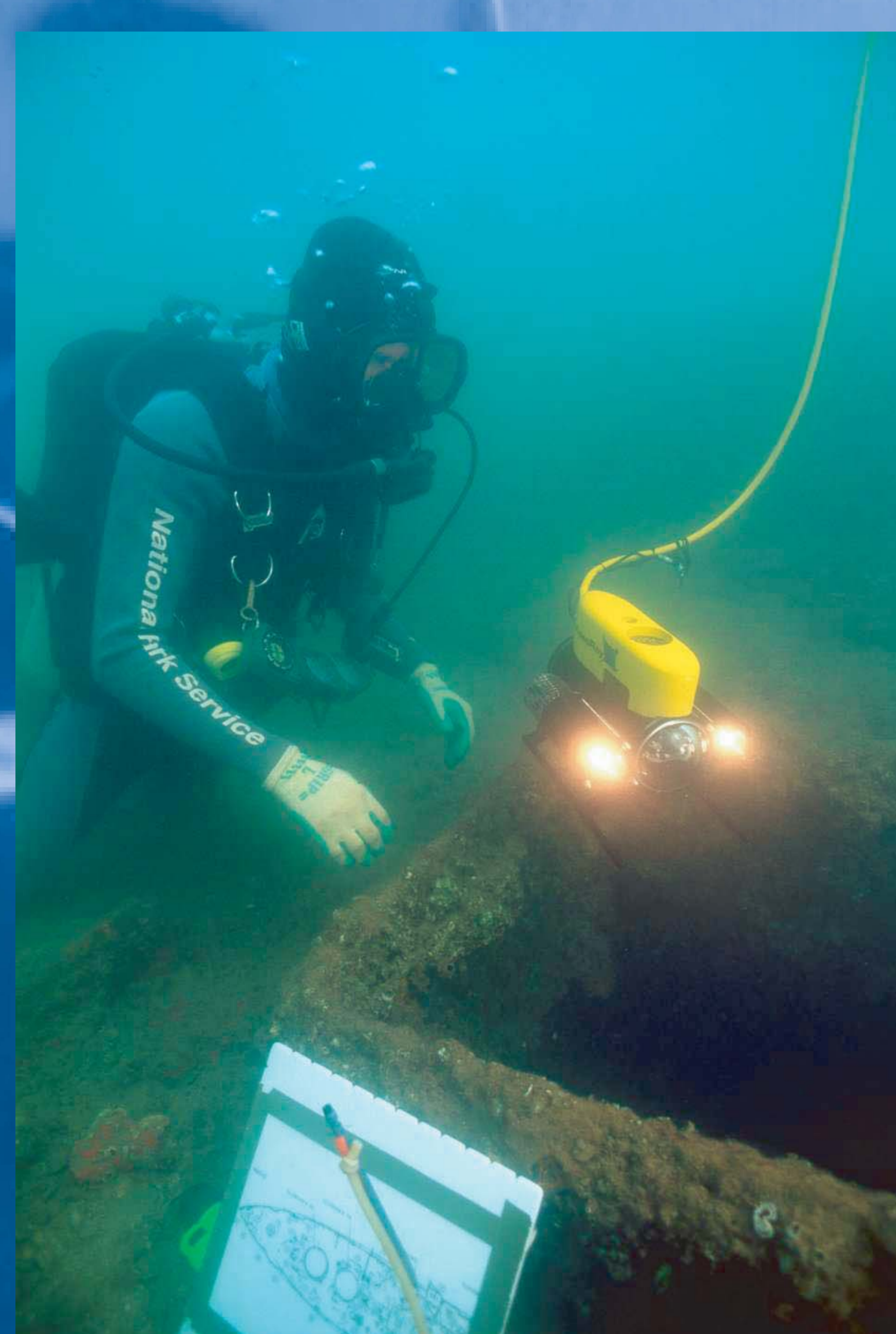




# USS Arizona: Mapping in 2003



During the 2003 dive, the team used a Videoray remotely operated vehicle (ROV) that was able to photograph conditions and carry scientific instruments inside the ship by slipping through small portholes and hatches. This information is being added to the GIS for archeological and structural assessment purposes.



*Photos clockwise from left: NPS diver with ROV, ROV inside Arizona, bullets in USS Arizona. (NPS Photo by Brett Seymour)*

The 2003 dives confirmed that no movement had occurred in the structure of the ship since 2001. This supports other data that indicate the *Arizona* corrosion is at a very slow rate.