



USS Arizona: Mapping in 2001



In the 2001 *USS Arizona* mapping project, NPS joined forces with the U.S. Army's 29th Engineer Battalion Survey Platoon to survey the battleship. Using Trimble 4000SSE receivers, the divers located 35 points on the wreck for use in rectifying the 1980s sketch map.

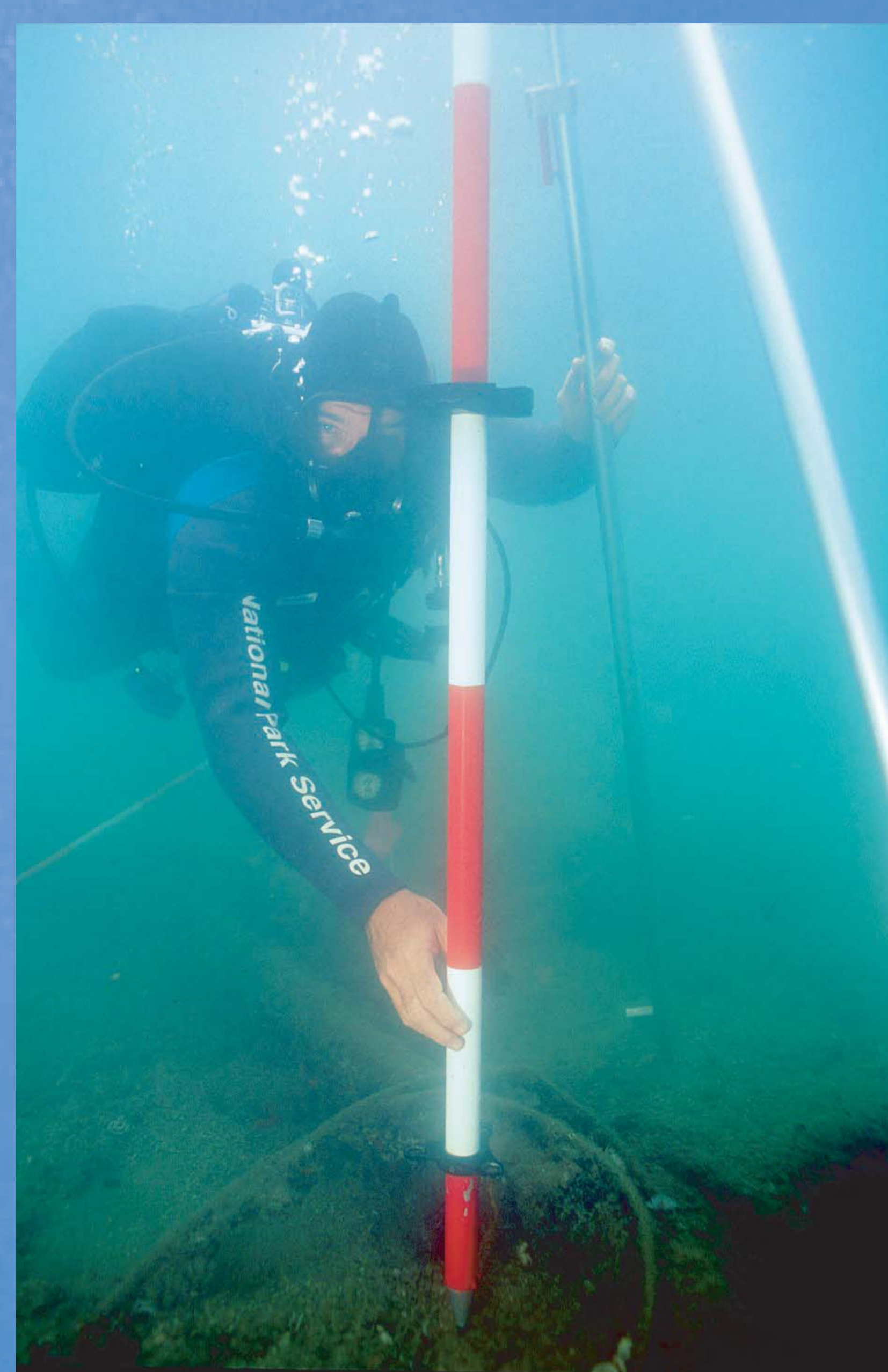
The divers also established and marked eight "super-points" that would serve as the base line for measuring movement of the ship.



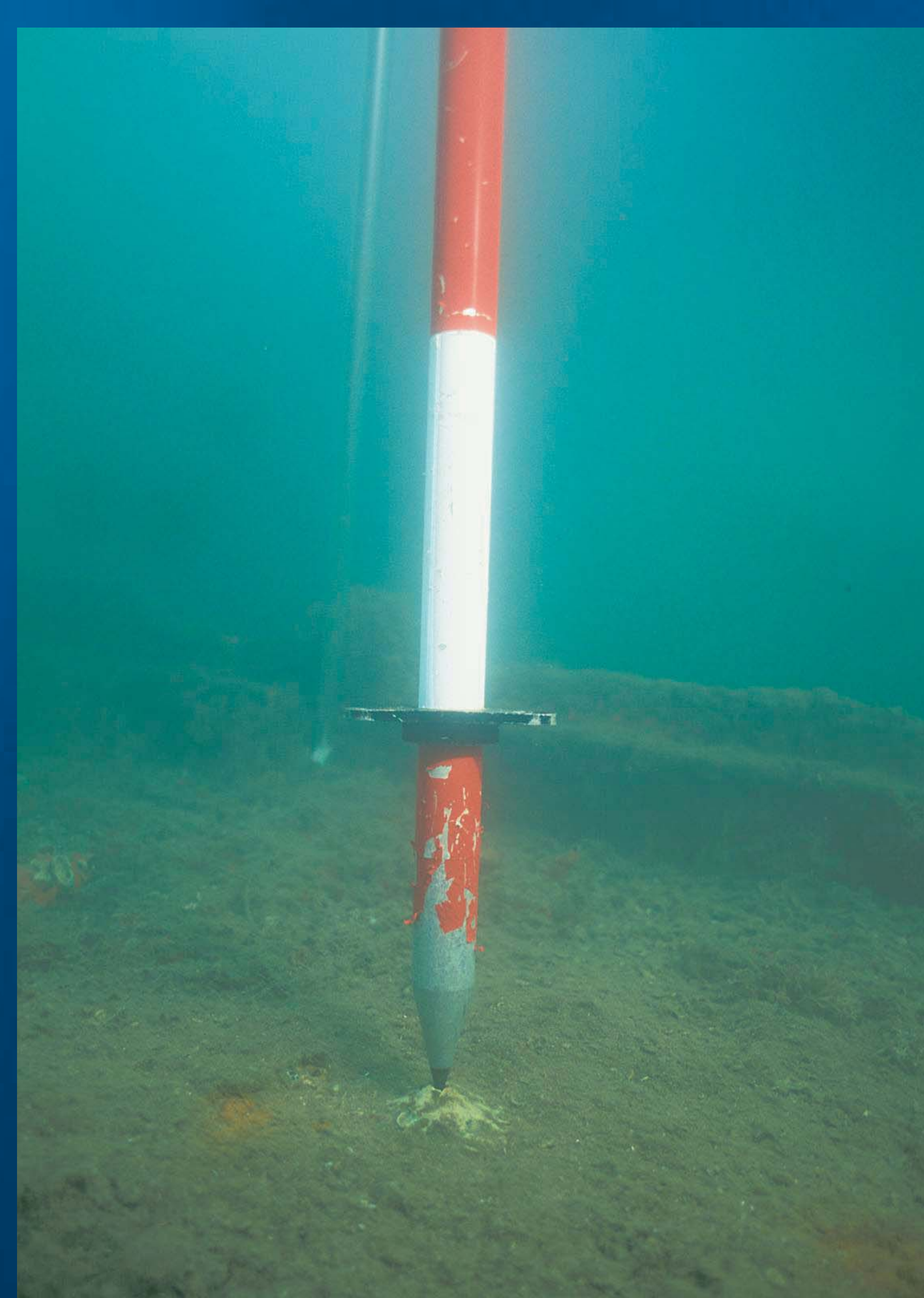
The Army's 29th Engineer Battalion Survey Platoon provides GPS support to NPS divers during the 2001 survey operations. (NPS Photos by Tim Smith)



For the 2001 project, the team put the GPS base station at a survey monument on land near the memorial's visitors' center. Two basic types of points were surveyed using post-process kinematic GPS techniques.



NPS diver setting up underwater tripod. (NPS Photo by Brett Seymour)



Tripod on survey point. (NPS Photo by Brett Seymour)

Kinematic points were taken on prominent features of the 1980s map. "Super-points" were taken on positions forward, aft and along the port and starboard hull sides so that future hull movement could be monitored.